

PREPARED BY:	JTM	CHECKED BY:	J. HURLEY
DRAWN BY:	JCM KMK	DATE:	8/8/2019
CONTRACT NO:		SCALE:	1" = 50'
DRAWING NO:		SHEET NO. 1	OF 1 SHEETS

## PARCELS A, B, C, AND D LDDA

SAN FRANCISCO PORT COMMISSION  
 PORT OF SAN FRANCISCO  
 DEPARTMENT OF ENGINEERING

APPROVED BY: \_\_\_\_\_  
 SAN FRANCISCO PORT COMMISSION  
 DATE: \_\_\_\_\_

CHIEF HARBOR ENGINEER

### LDDA - Exhibit A-2

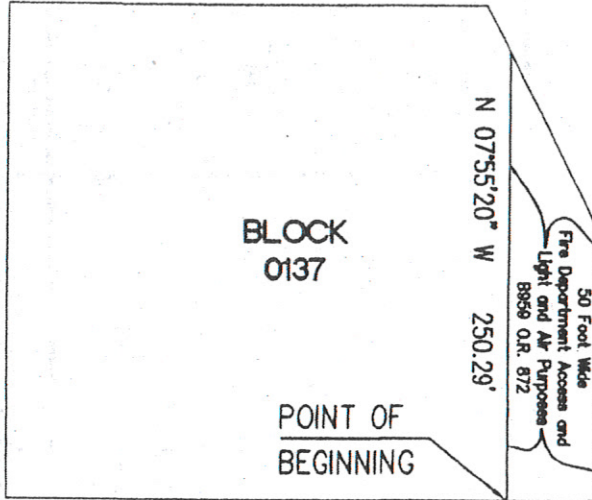
INITIALS: PORT: \_\_\_\_\_ TENANT: \_\_\_\_\_ DATE: \_\_\_\_\_

F:\MSCDWG\181117

GREEN STREET  
(68.75' WIDE)



SCALE: 1" = 100'



BLOCK 0138

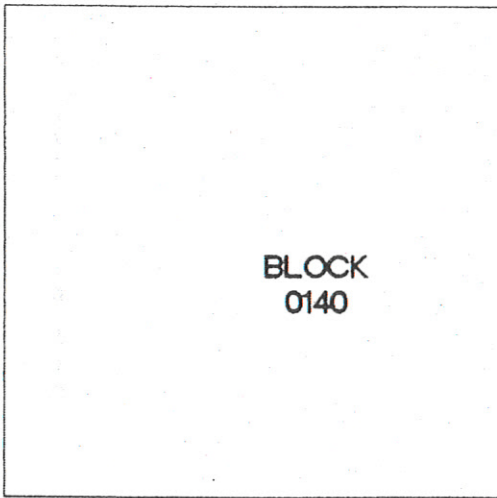
LOT LINES TO BE REMOVED

VALLEJO STREET  
(68.75' WIDE)

S 82°04'40" W 44.31'

THE EMBARCADERO  
(WIDTH VARIES)

S 34°03'52" E 602.36'



BLOCK 0139

S 82°04'40" W 47.04'

R=236.63'  
L=161.97'  
D=39°13'03"

BROADWAY  
(WIDTH VARIES)

**KCA ENGINEERS, INC.**

CONSULTING ENGINEERS • SURVEYORS • PLANNERS

318 BRANNAN ST. • SAN FRANCISCO, CA 94107 • (415) 546-7111 • FAX: (415) 546-9472

LOT LINE ADJUSTMENT  
ASSESSOR'S BLOCKS 0139 & 0138  
SAN FRANCISCO CALIFORNIA

DATE:  
07.19.16

1 OF 1