

Office of the Assessor-Recorder Fiscal Year 2025 and 2026 Proposed Budget

SF Board of Supervisors Budget and Appropriations Committee
June 12, 2024



Joaquín Torres
San Francisco Assessor-Recorder



Our Mission

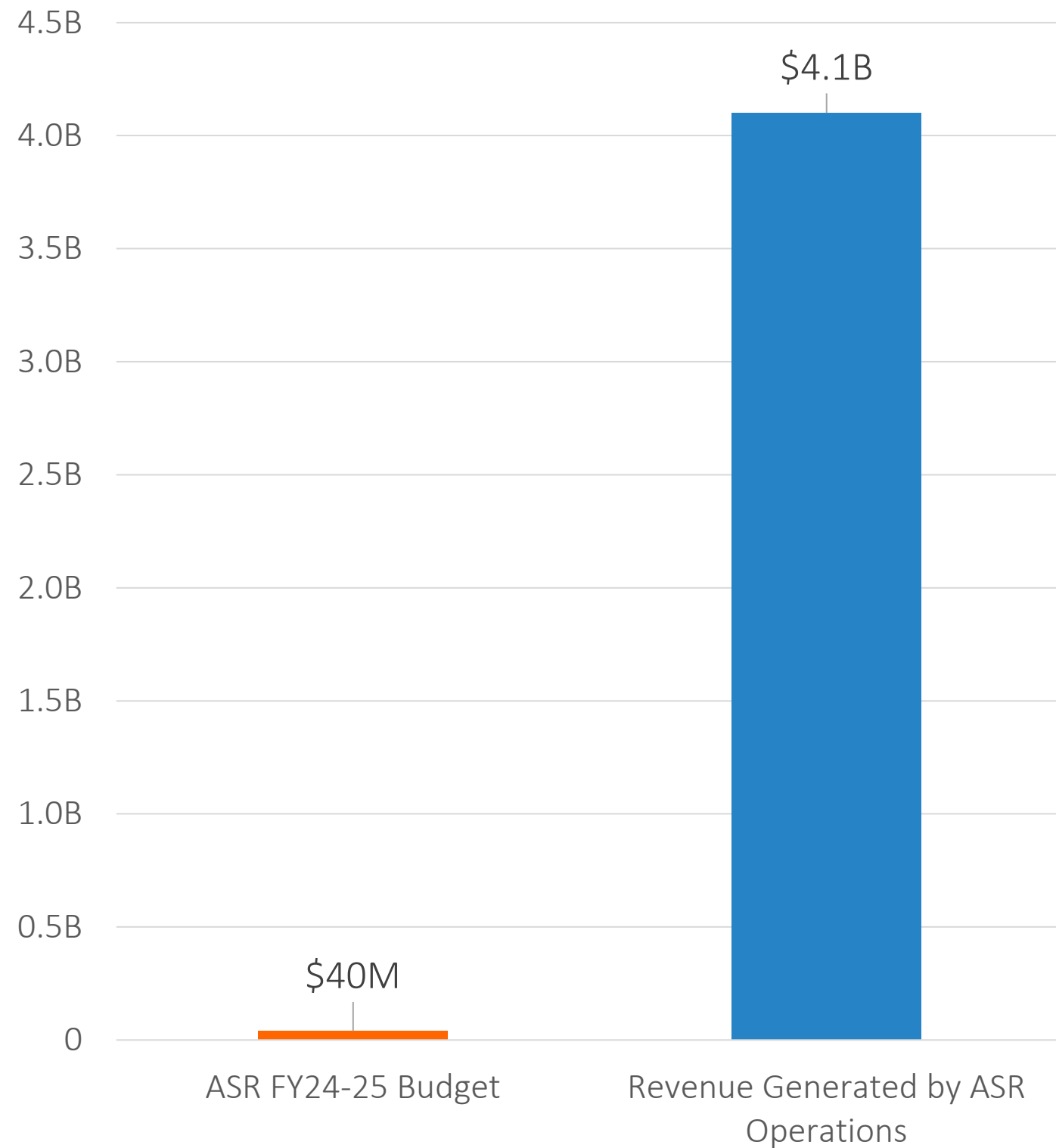
sfassessor.org

Our Mission is to fairly and accurately identify and assess all taxable property in San Francisco, and record, secure, and provide access to property, marriage and other records.





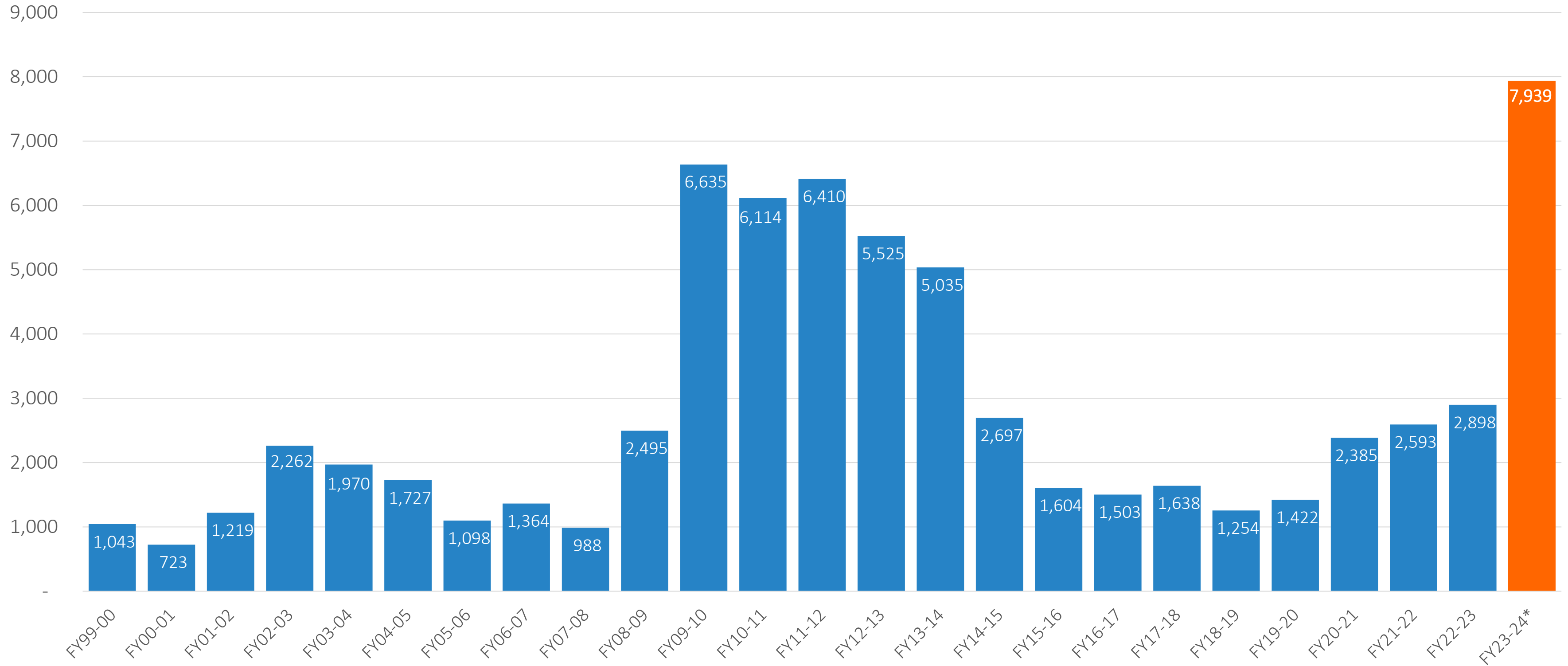
Delivering value with our budget



- \$40M Total Expenditure Budget
- \$4.1B in revenue of which \$2.6B is available to the General Fund, generated by a \$345B assessment roll (after exemptions)



Secured Assessment Appeals Filed

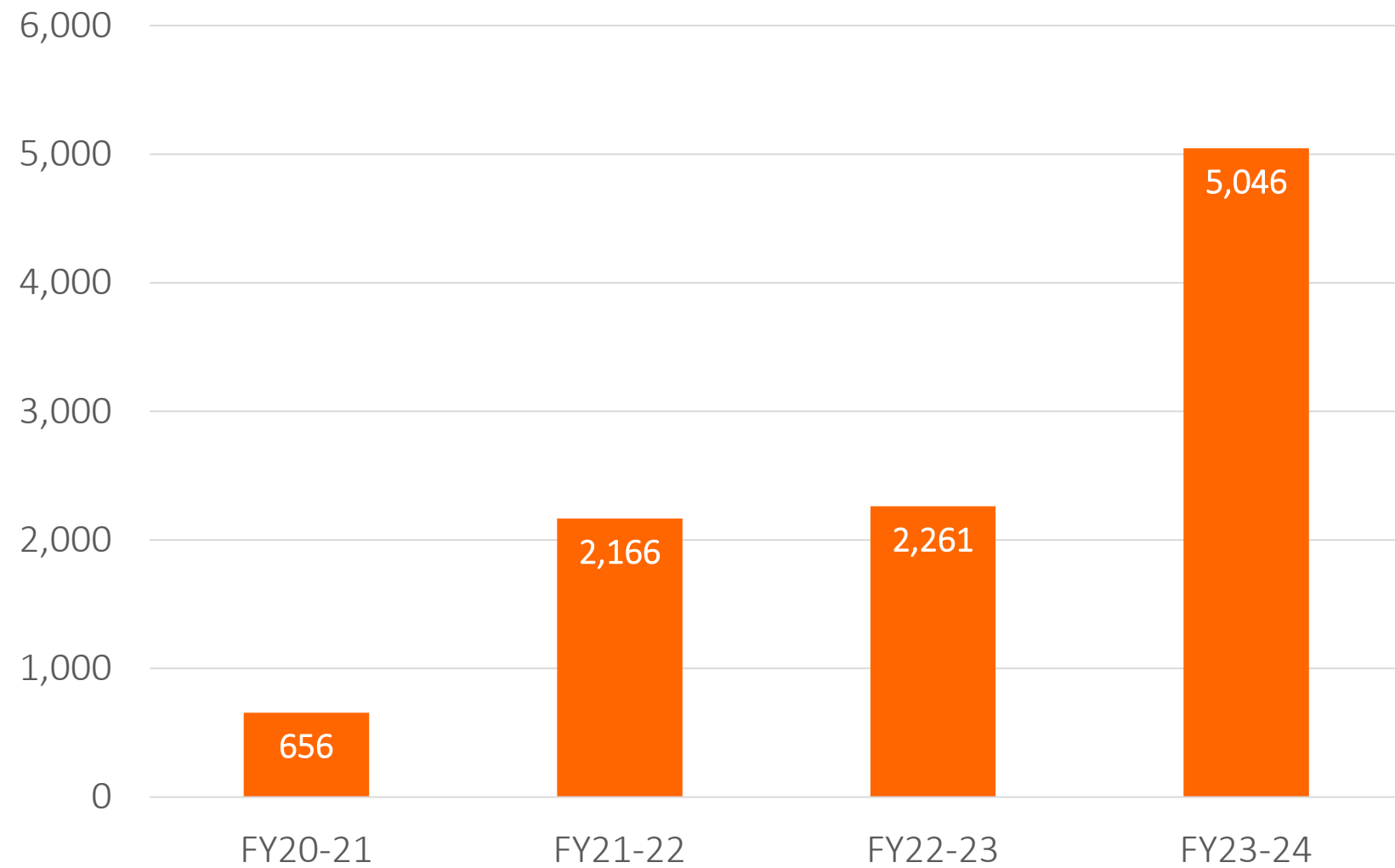


*FY23-24 Data as of 3/31/2024, AAB FY23-24 activity Report

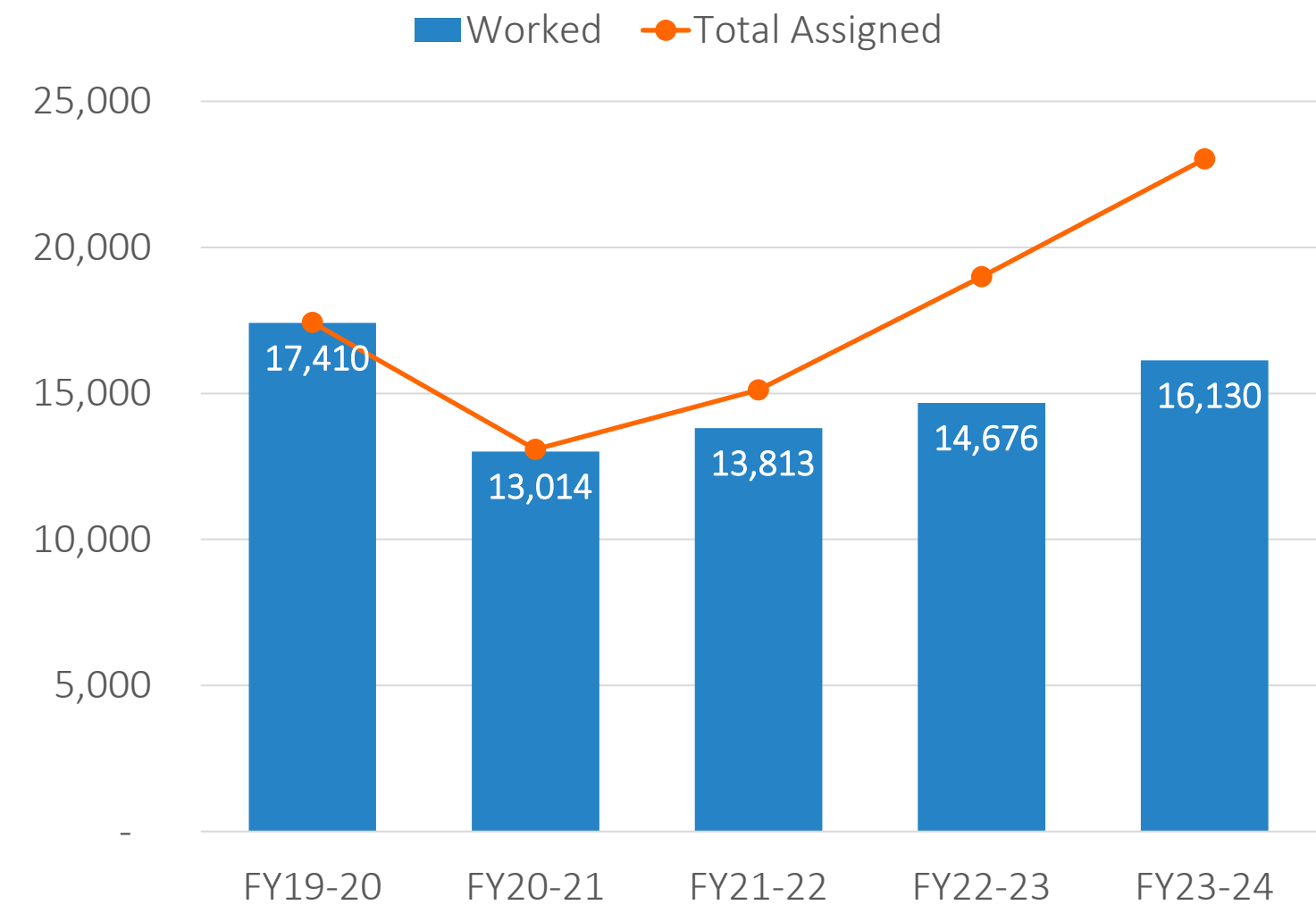


Performance

AAB Hearings Scheduled



Assessment Workload: Assigned vs Worked



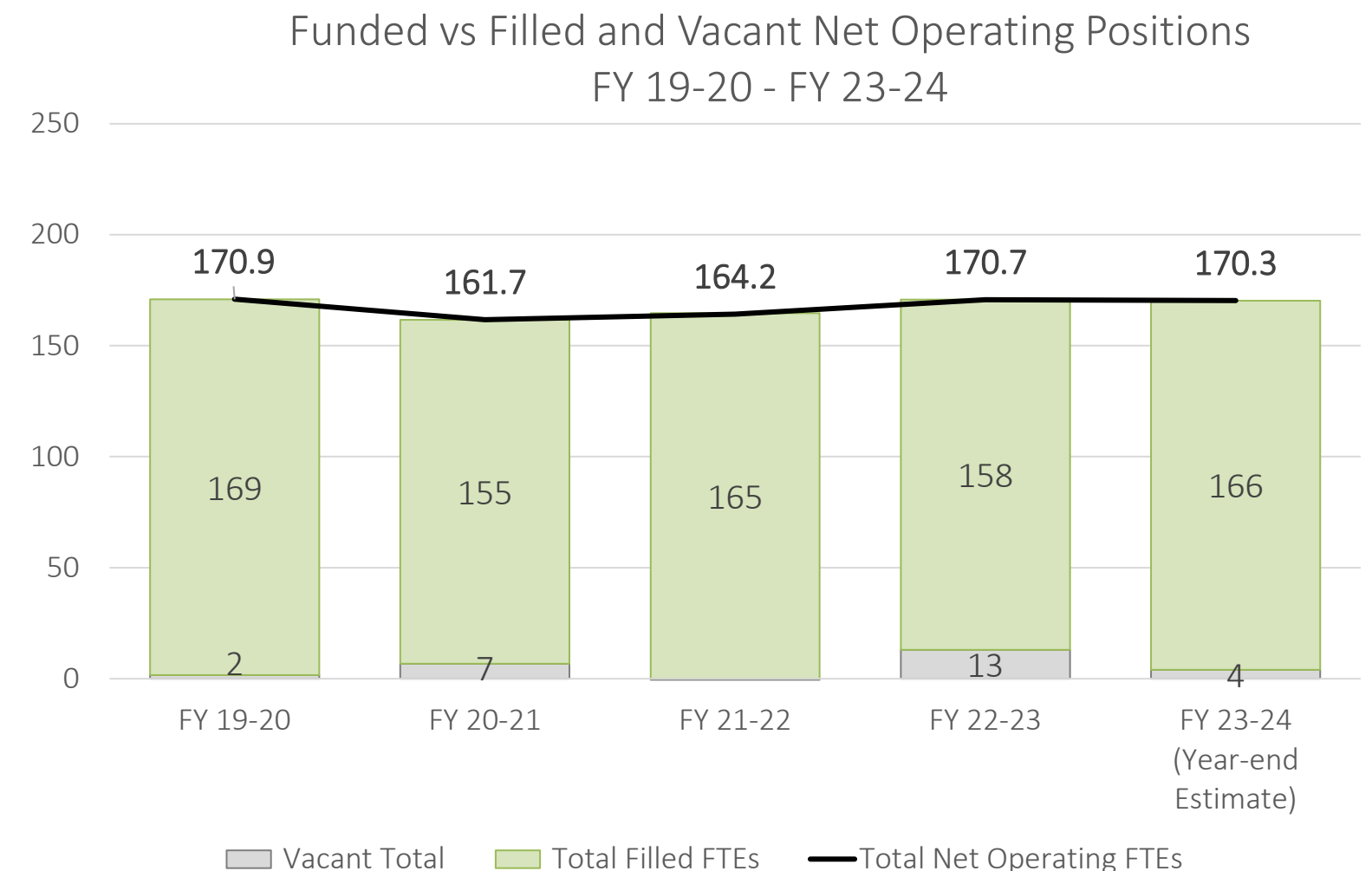
*FY23-24 Data as of 6/3/2024



FY23-24 Staffing

- 170.27 funded operating positions and 5 current vacancies (3% vacancy rate)
 - 1 of the 5 positions will be filled this month
 - 4 projected vacancies at year-end
- 19 new hires, 13 internal promotions, 9 temporary to permanent conversions

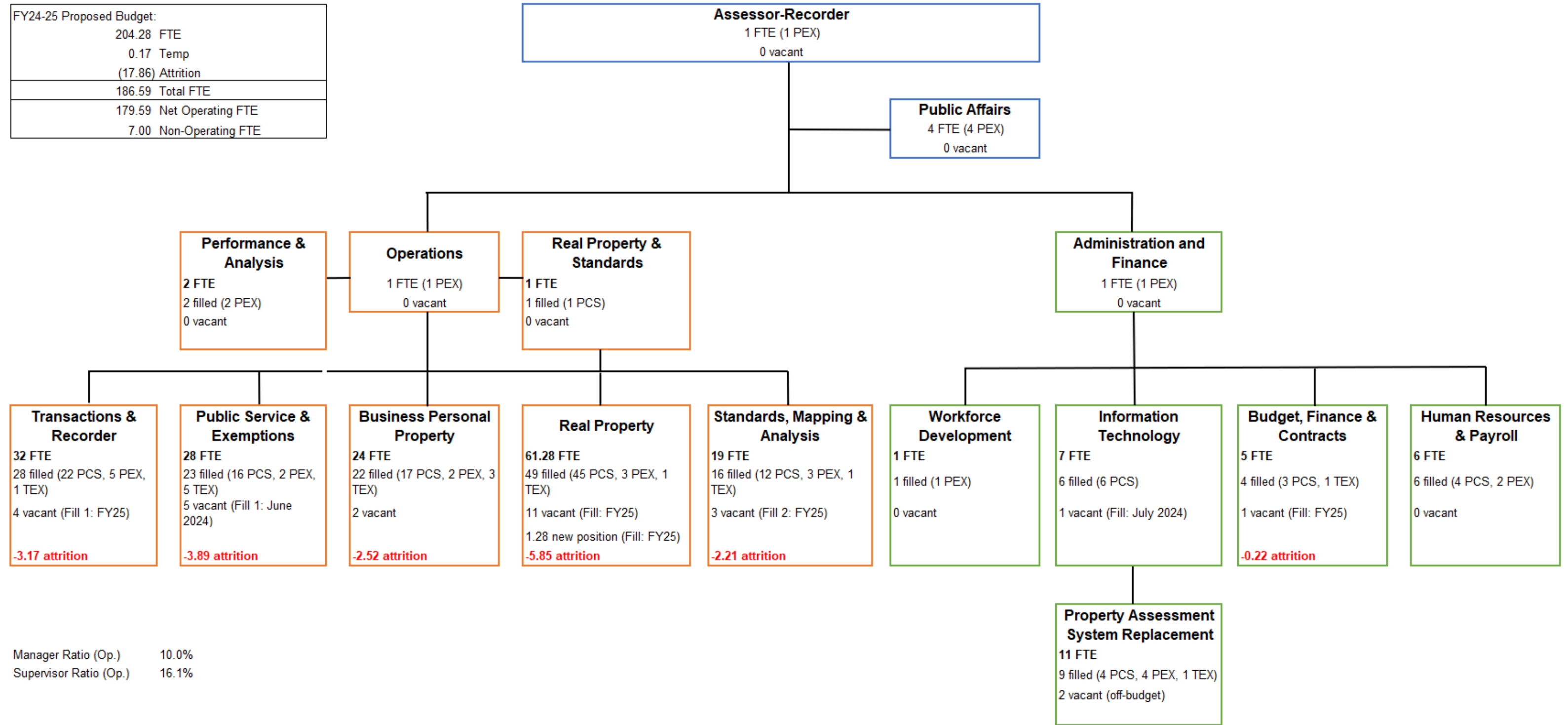
	FY 19-20	FY 20-21	FY 21-22	FY 22-23	FY 23-24 (Year-end Estimate)
Total Operating FTE	190.7	187.6	187.6	189.3	192.7
Attrition Savings	(19.8)	(26.0)	(23.5)	(18.6)	(22.4)
Total Net Operating FTE	170.9	161.7	164.2	170.7	170.3
Total Filled Operating FTE	169.3	155.0	164.7	157.7	166.3
Vacant Total	1.6	6.7	(0.5)	13.0	4.0





FY24-25 Proposed Budget Organizational Chart

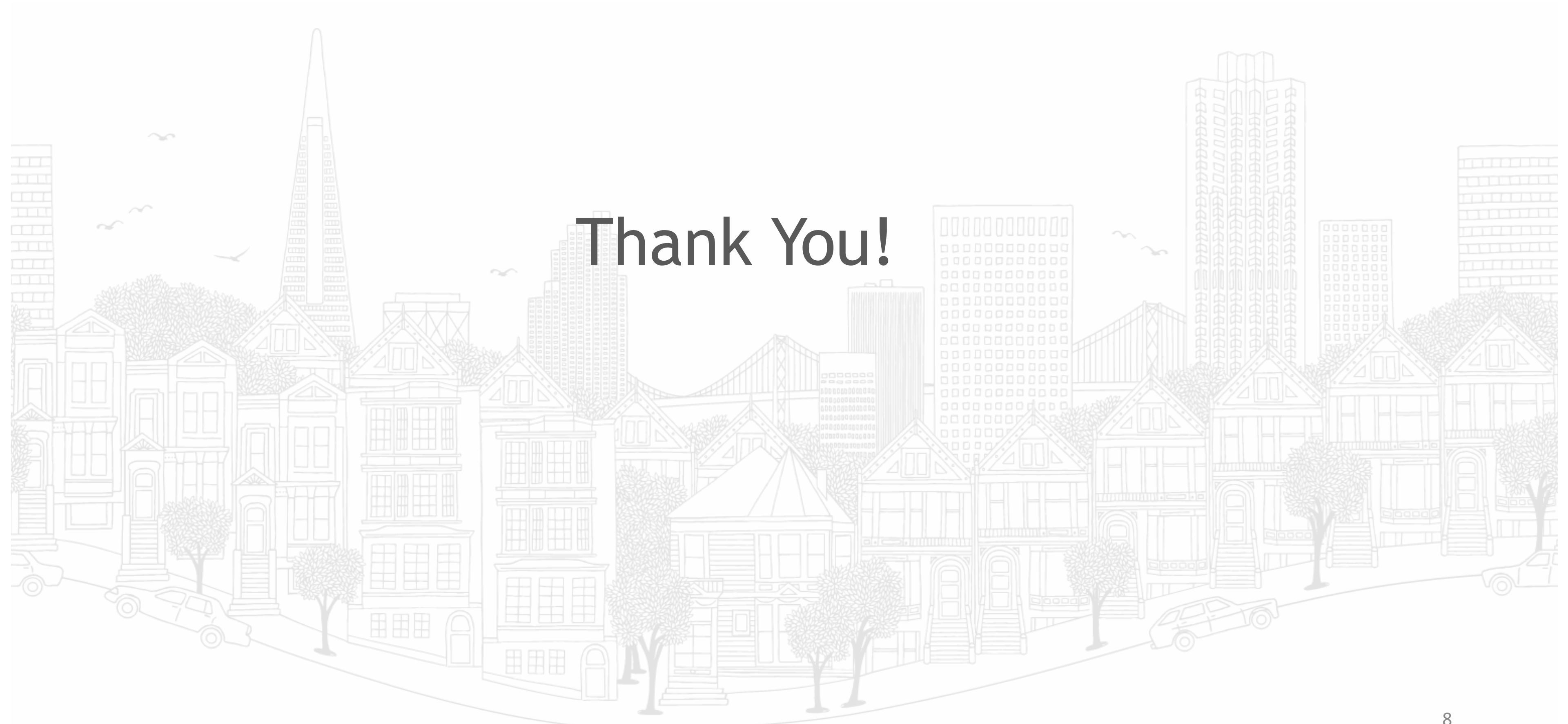
FY24-25 Proposed Budget:	
204.28	FTE
0.17	Temp
(17.86)	Attrition
186.59	Total FTE
179.59	Net Operating FTE
7.00	Non-Operating FTE



Manager Ratio (Op.) 10.0%
Supervisor Ratio (Op.) 16.1%

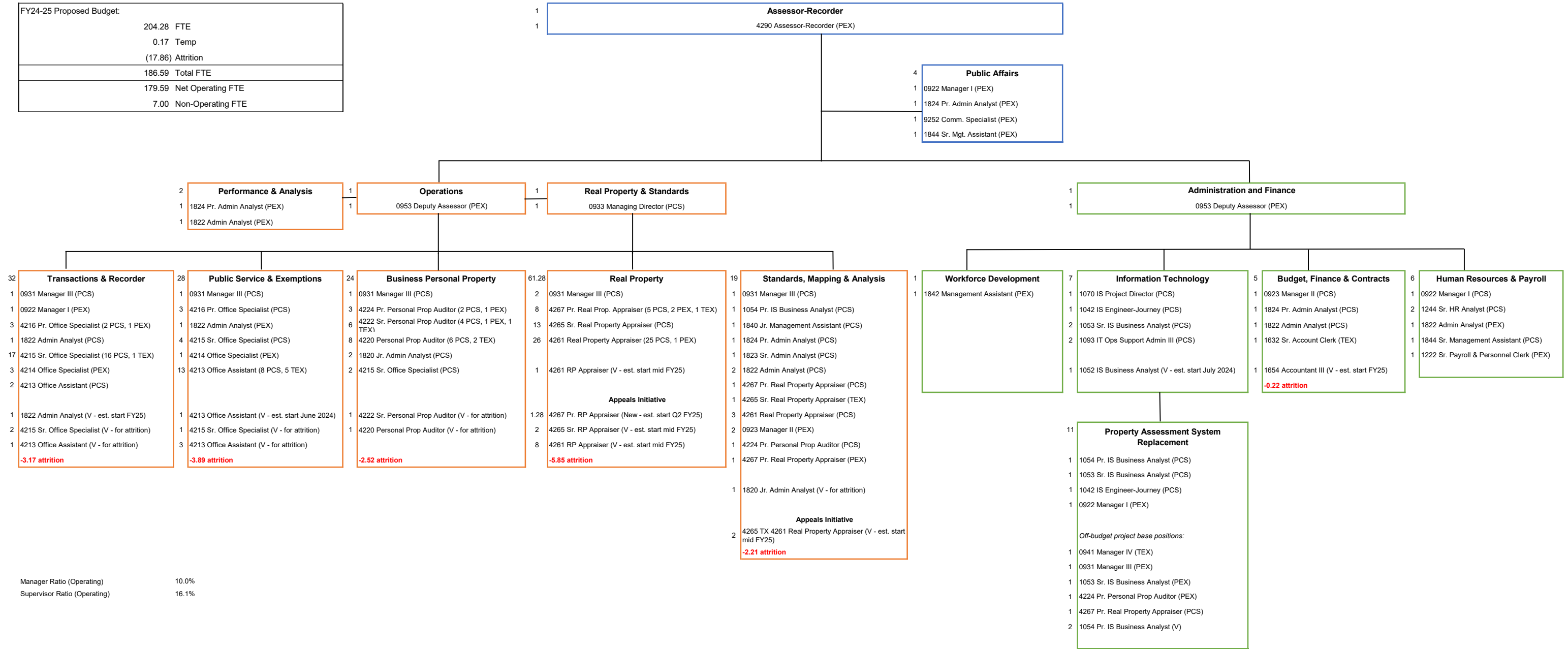
- Note:
- This org chart includes proposed FY24-25 budgeted positions, vacancies, position types, and the number of FTE that must be held vacant for attrition savings.
 - This org chart includes non-operating positions in our property assessment system replacement project.
 - PCS = Permanent Civil Service, PEX = Permanent Exempt, TEX = Temporary Exempt

Thank You!



ASSESSOR - RECORDER FY 24-25 PROPOSED ORGANIZATIONAL CHART

FY24-25 Proposed Budget:	
204.28	FTE
0.17	Temp
(17.86)	Attrition
186.59	Total FTE
179.59	Net Operating FTE
7.00	Non-Operating FTE



Manager Ratio (Operating) 10.0%
 Supervisor Ratio (Operating) 16.1%

- Note:
- This org chart includes proposed FY24-25 budgeted positions, vacancies, position types, and the number of FTE that must be held vacant for attrition savings.
 - This org chart includes non-operating positions in our property assessment system replacement project.
 - PCS = Permanent Civil Service, PEX = Permanent Exempt, TEX = Temporary Exempt