



San Francisco Sheriff's Department

FY 14-15 and FY 15-16 Budget Preview



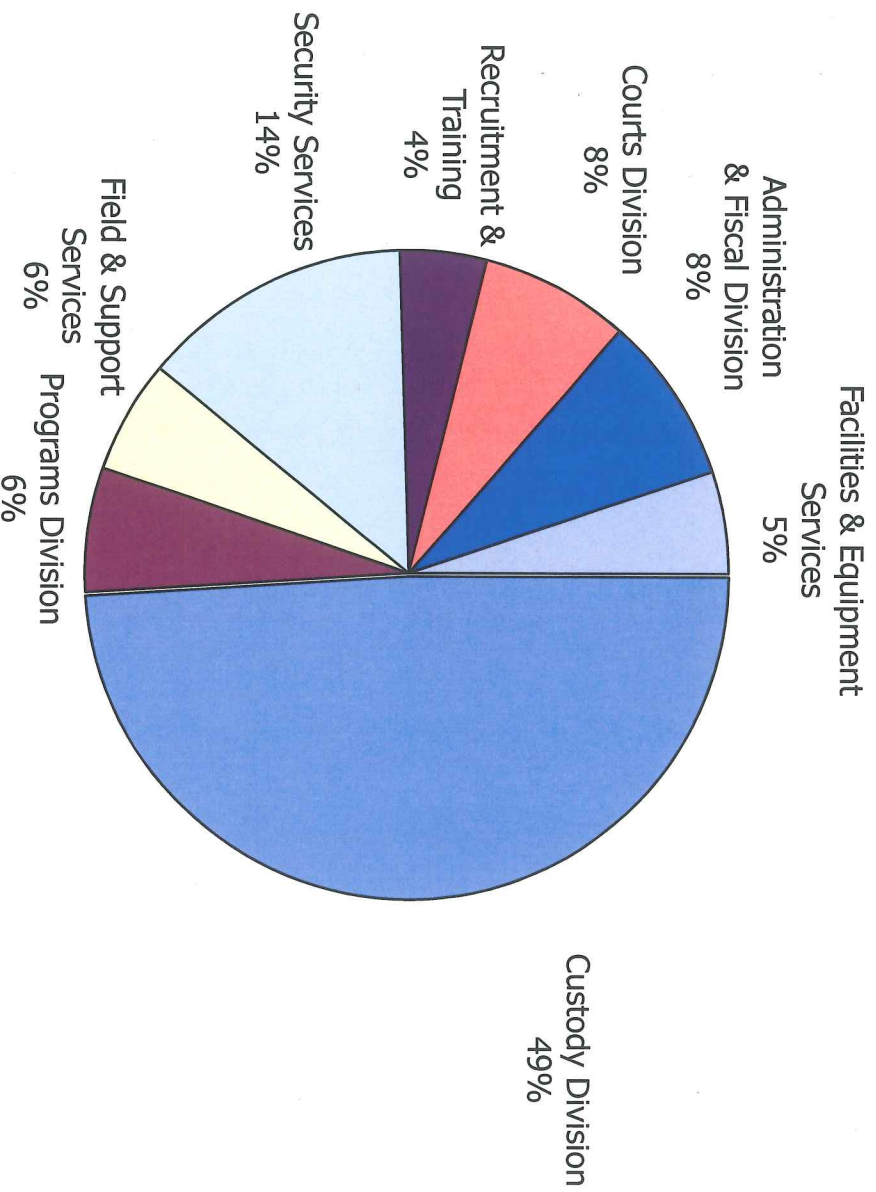
File # 140332
Received in Committee
4/23/12



San Francisco Sheriff's Department
Budget Preview



Full Service Law Enforcement Agency

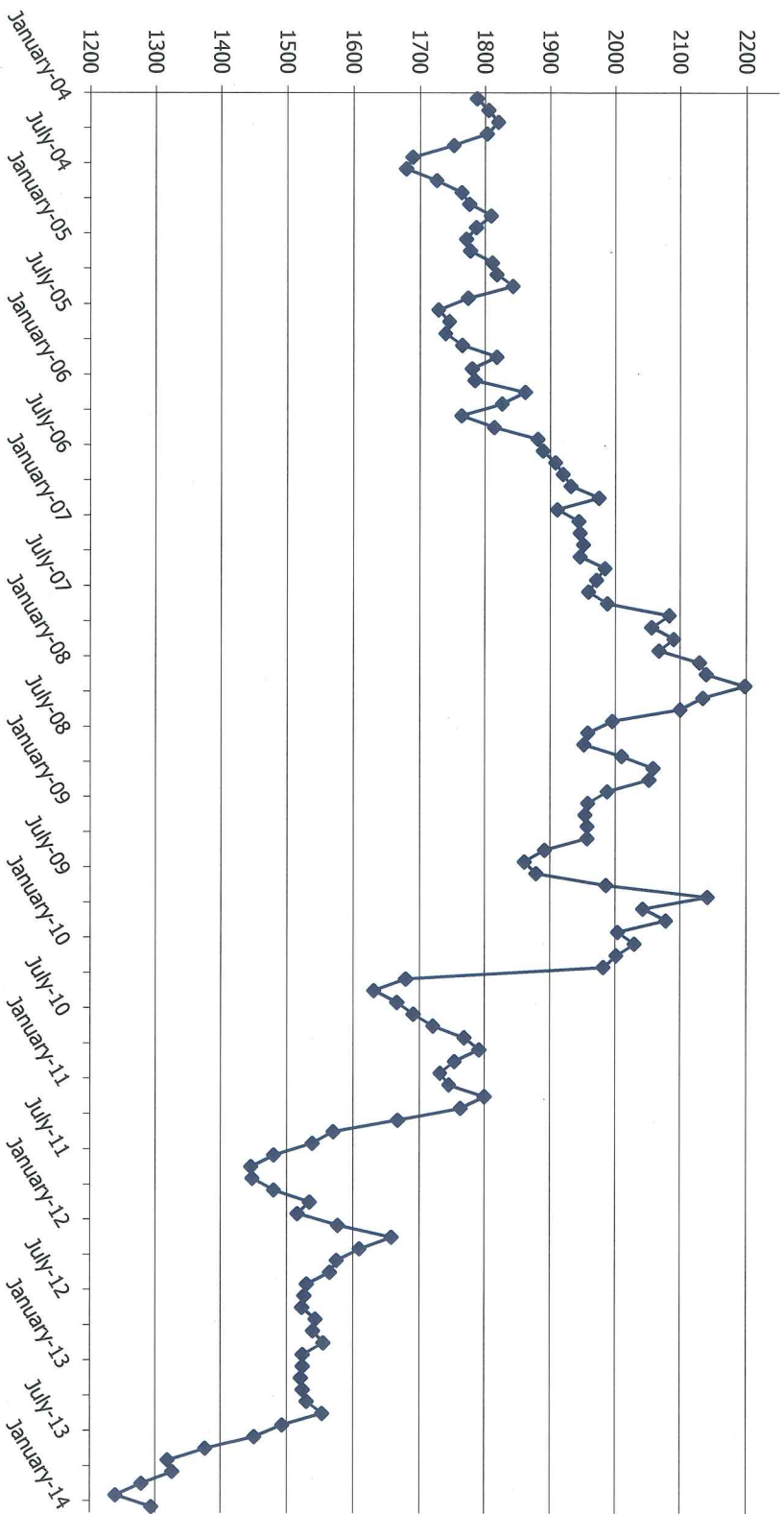




San Francisco Sheriff's Department
Budget Preview



Jail Population





San Francisco Sheriff's Department
Budget Preview



Consolidation of CJ#3 - November 2013

Benefits

- Discontinue use of housing incompatible with programming
- Remove staff and inmates from seismically unsafe building, reducing maintenance costs
- Reallocate 58 FTE, reducing overtime
- Create Central Records Unit, facilitating civilianization
- Prepare for HOJ replacement project

	Staff Allocation
Facility	Staff
CJ#1	5
CJ#2	11
CJ#4	5
CJ#5	9
Records	22
IPU	2
Courts	4
Total	58



San Francisco Sheriff's Department
Budget Preview



Department Achievements

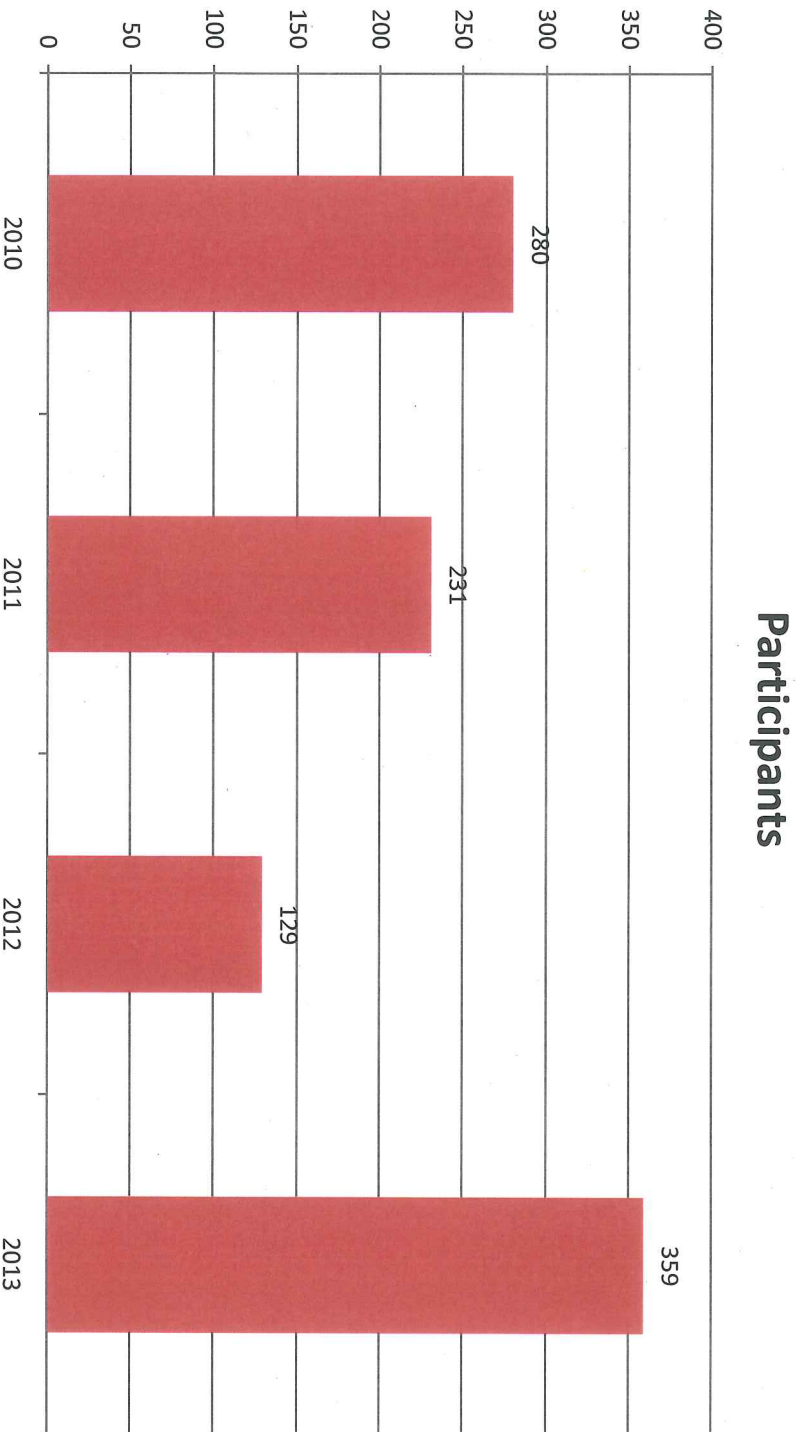
- **Measuring Performance**
 - 17% recidivism for participants who complete RSVP, ROADS, or SISTERS
 - 52% recidivism for participants who complete their EM or SWAP sentence
 - 65% recidivism for prisoners released in 1994 ¹
- **Implementing Affordable Care Act**
 - Ordinance 45-14 designates SFSD as the entity to help county jail inmates apply for health insurance
 - 400 incarcerated or recently released individuals assisted in FY13-14
- **Piloting Innovative Programs**
 - City College
 - Horticulture
 - Bike Repair
 - Red Dipper
- **Increasing Visitation**
- **Finalizing Re-Entry Pod**
 - First prisoners to arrive April 2014

1. Recidivism of Prisoners Released in 30 States in 2005: Patterns from 2005 to 2010, NCJ 244205, BIS web, April 2014.



Electronic Monitoring

Proposed criteria expansion * Increased participants 178%





San Francisco Sheriff's Department
Budget Preview



Department Initiatives

- **Vocational School: Construction Trades Training**
 - In-custody and Post-custody training
 - Removal of barriers to employment, i.e. union dues
 - Community partnership
 - Employment referrals
- **WRC Cafe**
 - Post-custody training
 - Living Wage employment
 - Community partnership



Clinical Eviction Assistance

Zip Code	Eviction Assistance	Percent
94134	166	108%
94124	148	97%
94115	51	33%
94107	42	27%
All Other Zip Codes	111	73%
Total	153	100%

- 79% of evictions that require assistance occur in four zip codes
- HSA, DPH, MOH do not provide clinical crisis management
- Many incidents require crisis management



San Francisco Sheriff's Department
Budget Preview



Law Enforcement

- **DEM Dispatch**
 - DEM discontinued 911 support
 - UCSF audit found communications at SFGH were significant contributor to Lynn Spaulding tragedy
- **Station Transfer Unit**
 - Efficient use of resources
 - 10 FTE FY 14-15
 - 10 FTE in FY15-16
- **Civilianizing Central Records**
- **Field Officer Training**
 - POST mandated
 - FTO waiver no longer relevant



San Francisco Sheriff's Department
Budget Preview



Staffing

- **Keeping pace with retirement**
 - FY 13-14 Academy Class – 20 FTE
 - FY 13-14 retirements to date– 17 FTE
- **Backfilling staff on long-term disability leave**
 - 25 FTE on long-term disability, unlikely to return
 - Long-term leaves result in over-dependence on overtime