

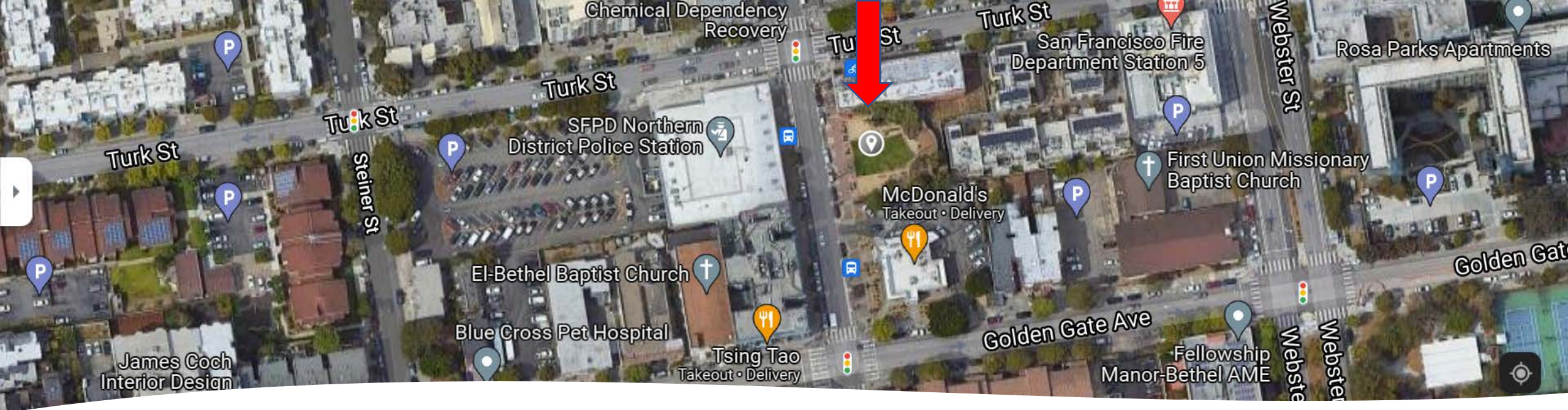
# FILMORE TURK MINI PARK



Budget and Finance Committee, September 22, 2021  
Accept In-Kind Grant - TS Studio Landscape Architects -  
Fillmore Turk Park Renovation Project - \$200,000







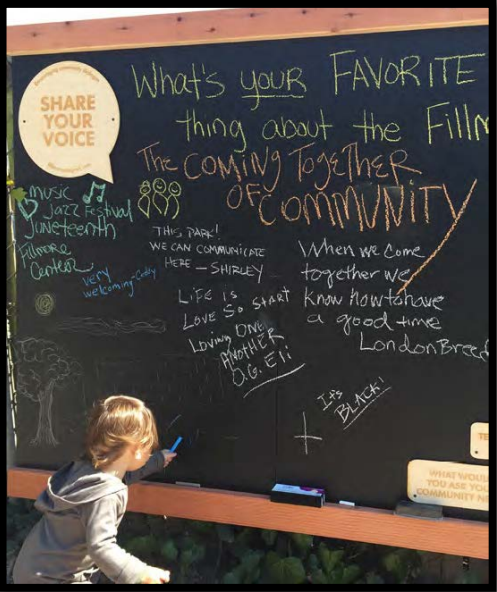
Located in the Western Addition neighborhood, on Fillmore Street between Turk Street and Golden Gate Avenue, this 10,000 square foot park is nestled by a three-story landmark brick building (north), three-story private housing (east), and a one-story restaurant parking lot (south).

A small oval stage sits at the end of the central lawn area that is surrounded by benches and game tables, which encourages neighborhood event gathering, sitting, and picnicking.

Community partners: New Community Leadership Foundation, San Francisco Beautiful, and TS Studio Landscape Architects

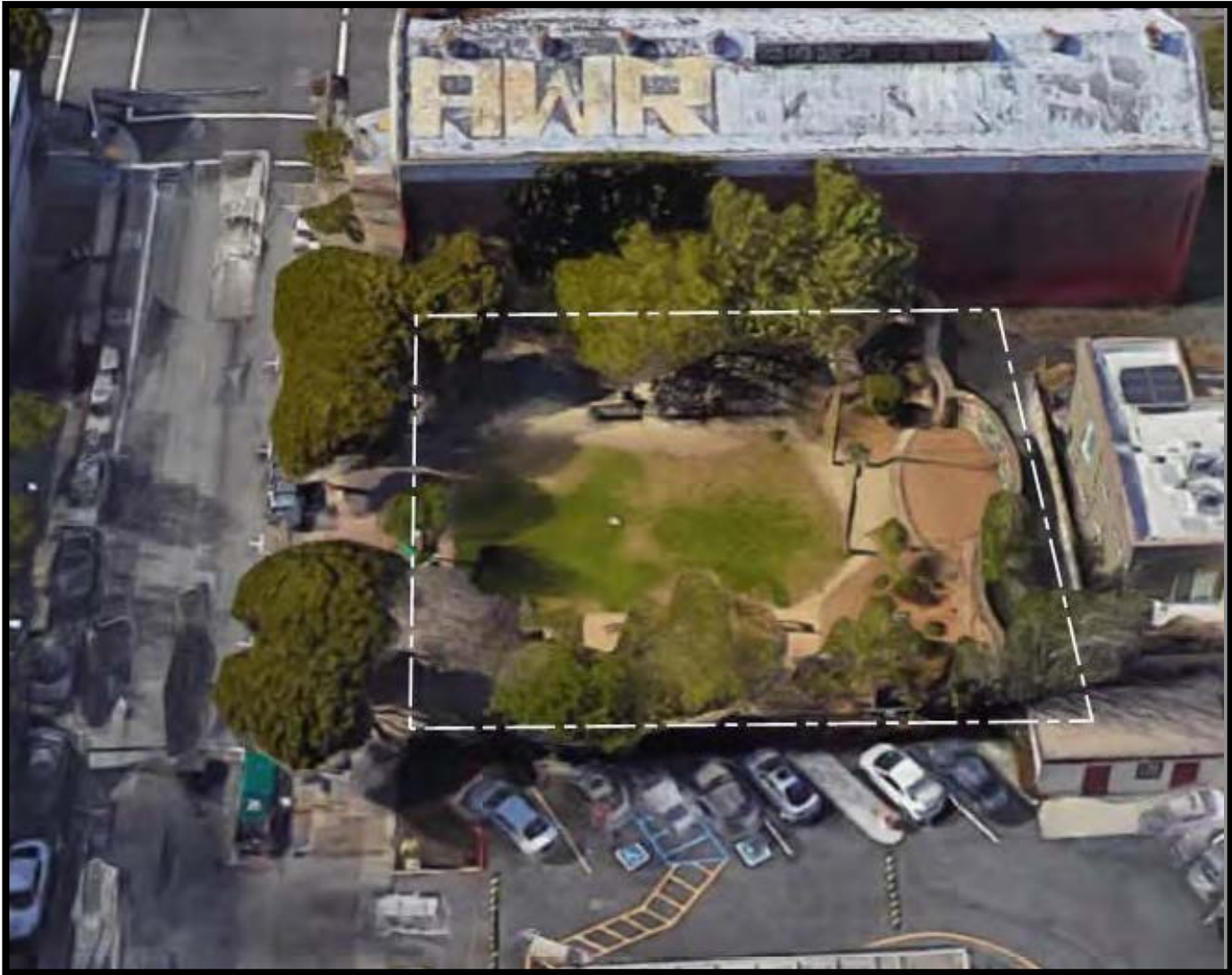


TS Studio facilitated community engagement and consensus building through a series of extensive on-site and neighborhood outreach events. With support from SF Beautiful and TS Studio, New Community Leadership Foundation was awarded a Community Opportunity Fund grant (COF), a program of the 2012 Clean and Safe Neighborhood Parks Bond.





The existing lawn, often muddy and inconsistent, keeps park users from gathering informally. The existing landscaping does not provide a sense of peace and relaxation.





TS Studio has offered pro-bono design services to revitalize the park with new landscaping, drainage, and seating within the park.





# FILMORE TURK MINI PARK

THANK YOU - New Community Leadership Foundation,  
San Francisco Beautiful, and TS Studio Landscape  
Architects!

FOR PROJECT INFORMATION:

<https://sfrecpark.org/612/Fillmore-Turk-Mini-Park>

