



# BART Secure Bicycle Parking in San Francisco

SFBOS Transportation & Land Use Committee

12.5.22

Heath Maddox, Manager of Bicycle Access



# BART Bike Parking

## Bike Racks

- Most of SF's 364 rack spaces are inside stations
- Many are inside the paid area
- At all SF stations but Powell & Montgomery

## Bike Lockers

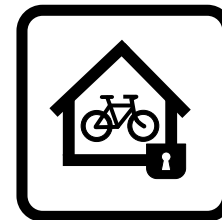
- Keyed lockers: 12 spaces at Glen Park
- eLockers: 12 spaces at Glen Park & 12 at Balboa

## Bike Stations

- Districtwide: 6 self-park; 3 valet
- SF: 2 self-park, total of 246 spaces
  - Embarcadero: 106 spaces, opened 2003, recently modernized
  - Civic Center: 140 space, opened 2015, recently modernized & expanded

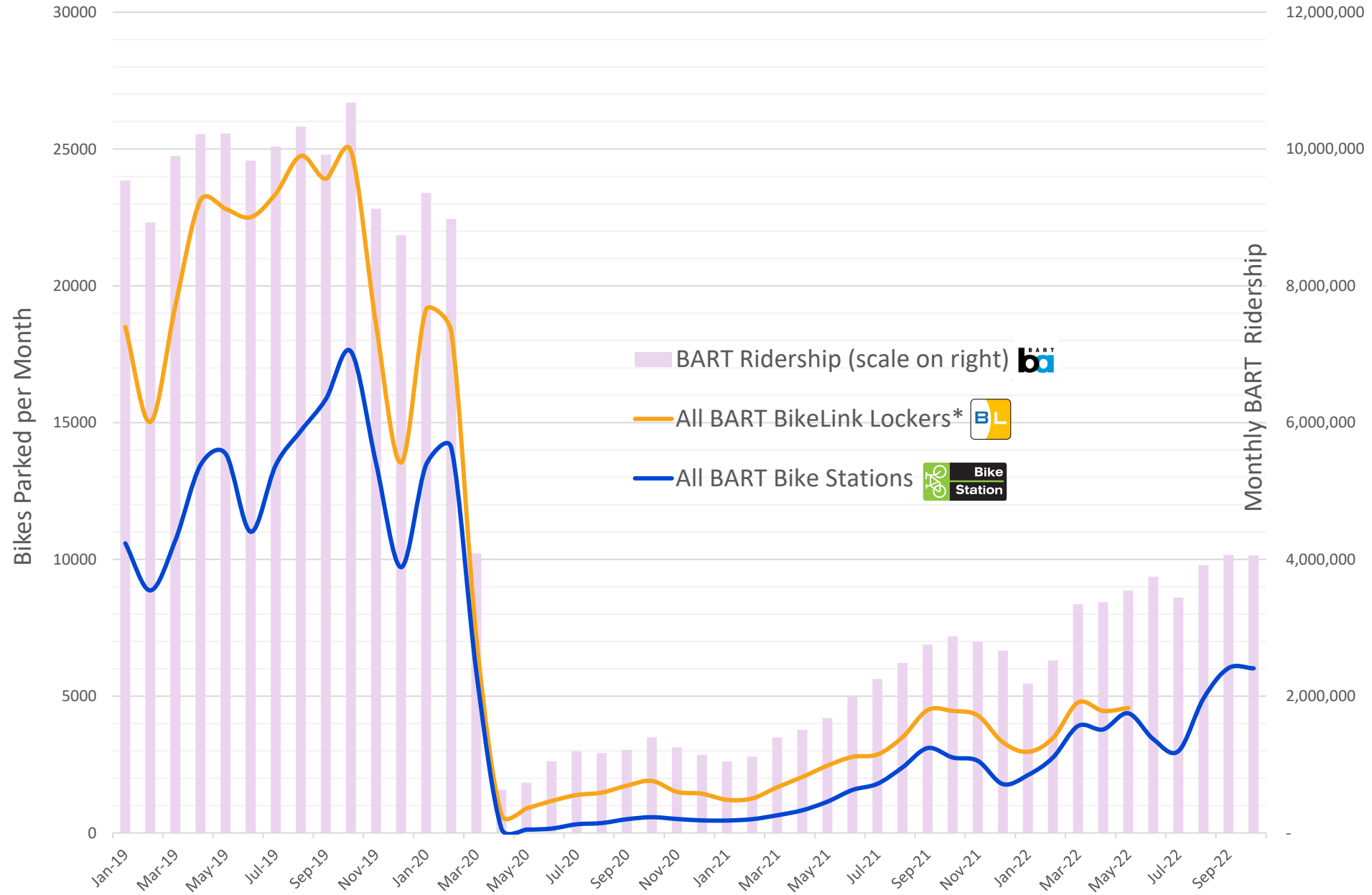
## Bikekeep

- 16th St: 20 spaces
- 24th St: 20 spaces



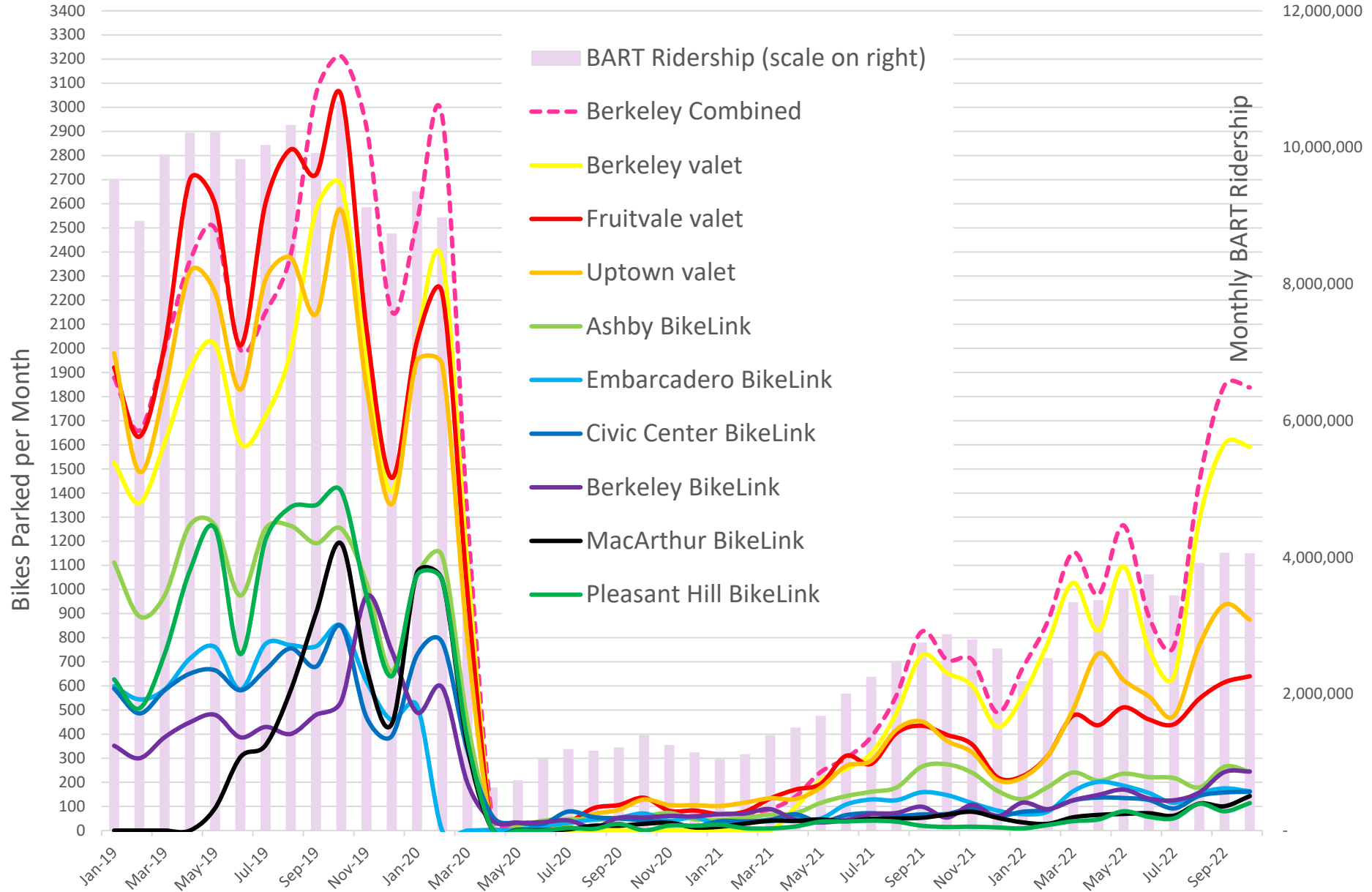


# Monthly Rentals at all eLockers and BART Bike Stations vs. BART Ridership Jan 2019-Oct 2022



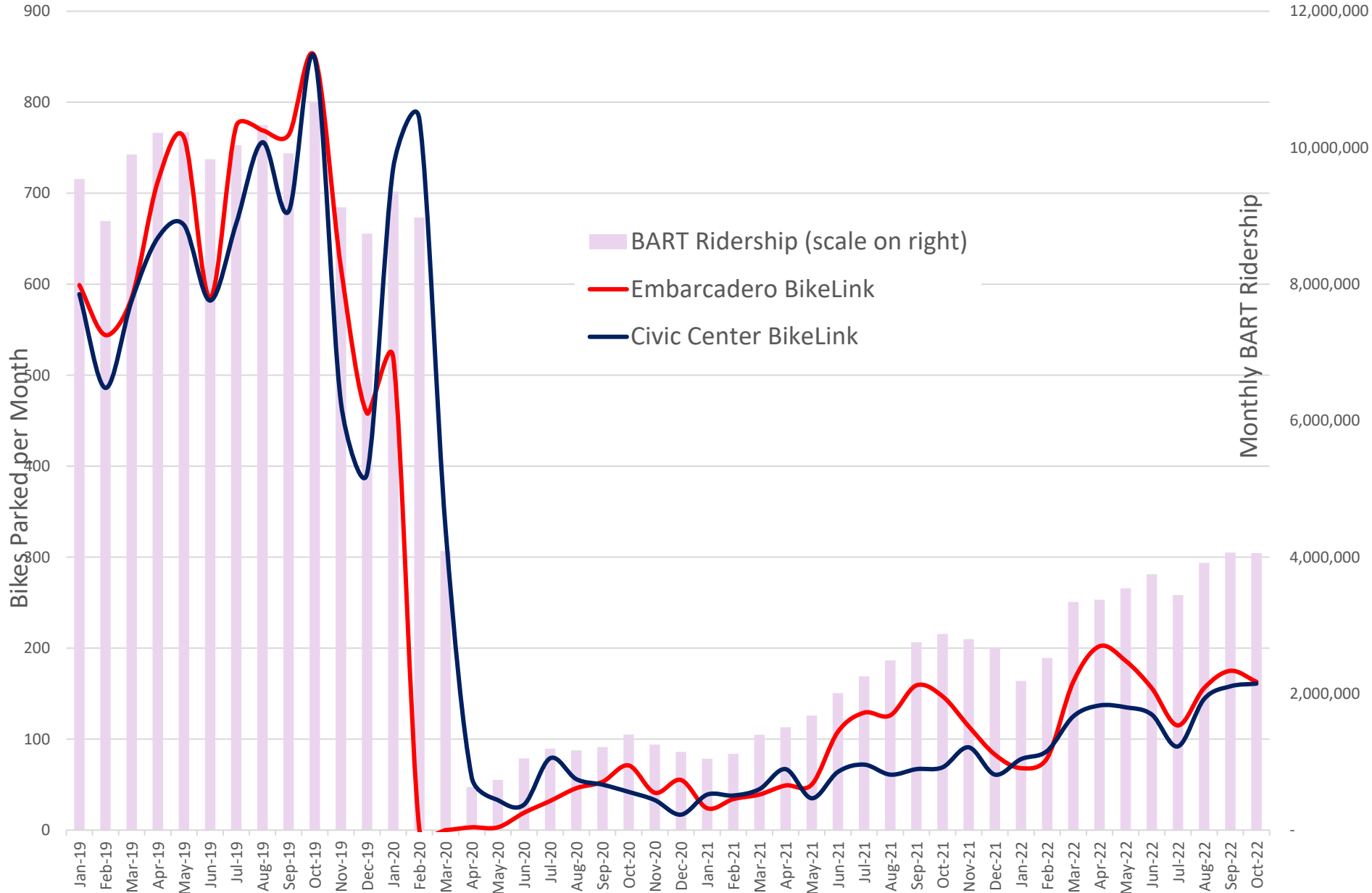


# Monthly Volumes at BART Bike Stations & BART Ridership Jan 2019-Oct 2022



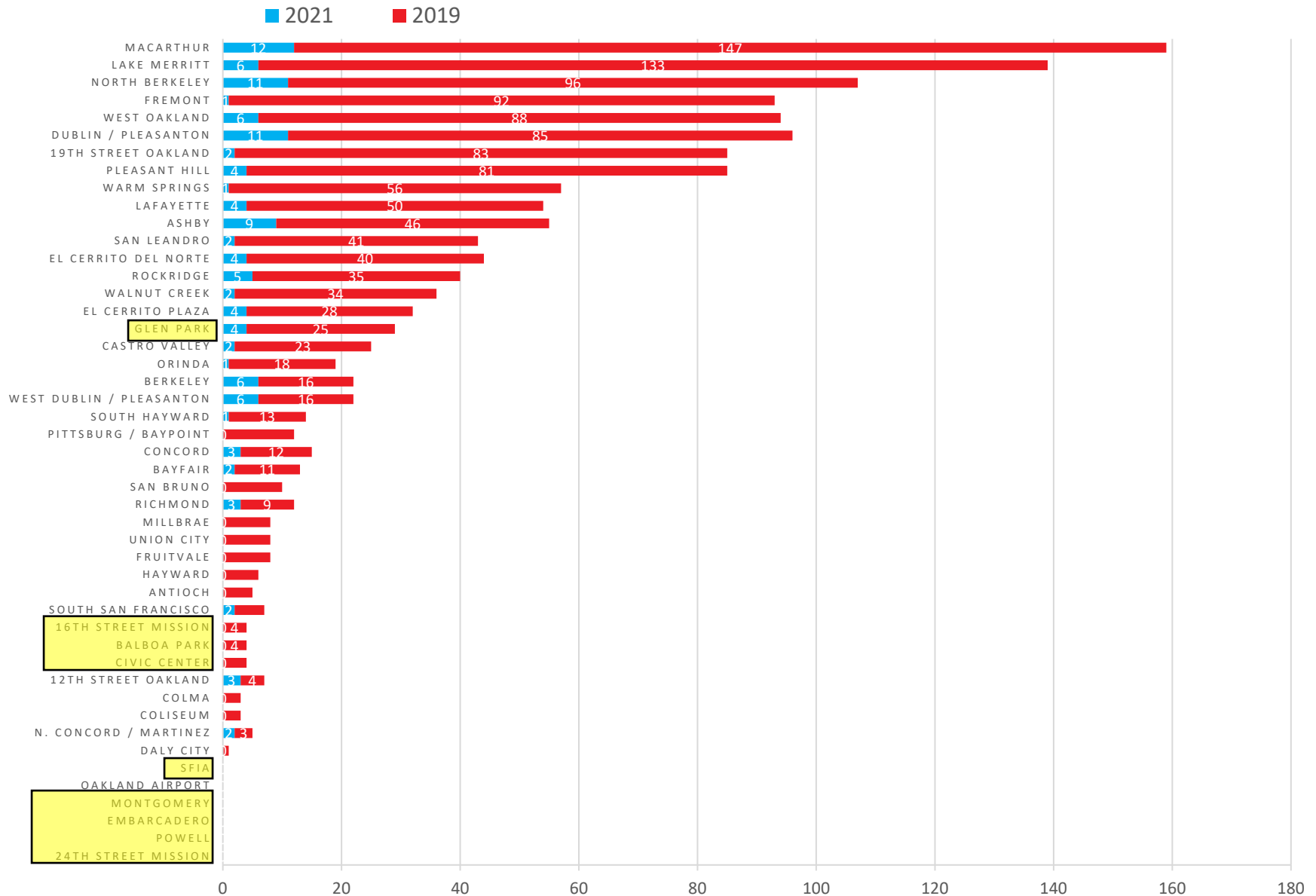


# Monthly Volumes at SF BART Bike Stations & BART Ridership Jan 2019-Oct 2022



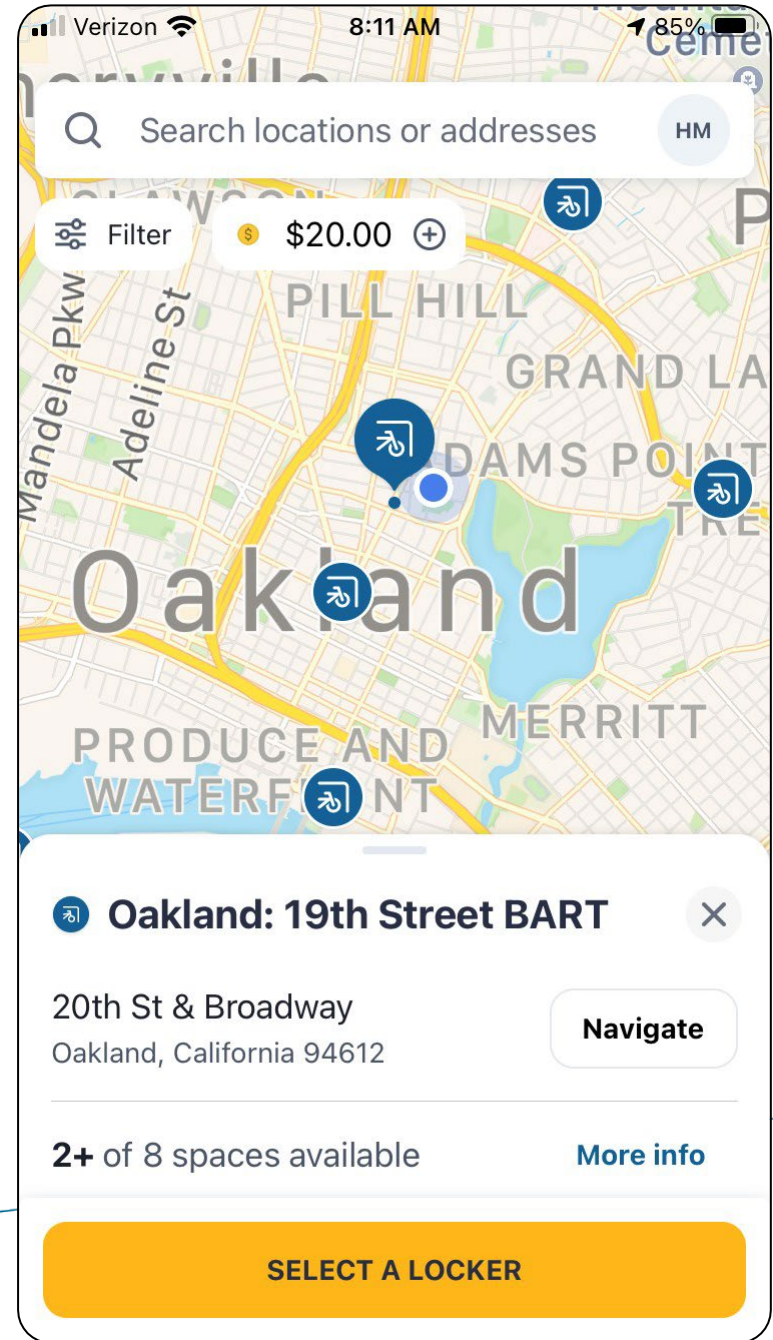
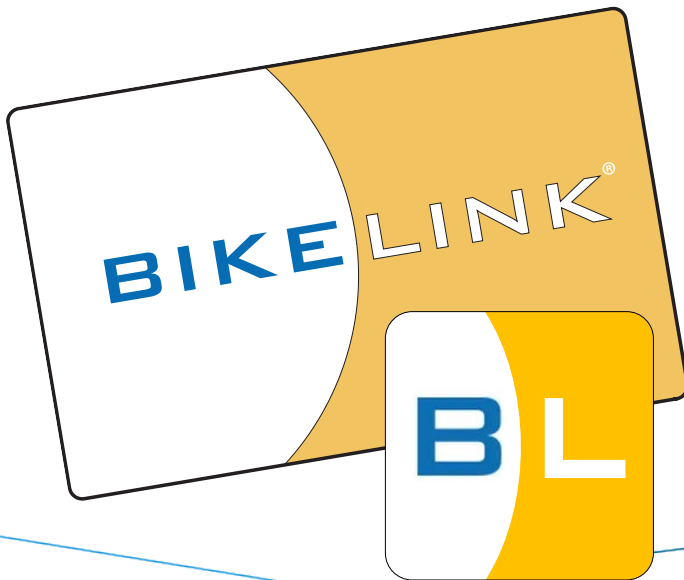


# ANNUAL BART BIKE PARKING SURVEY OCCUPANCY COUNT, ALL RACKS AT STATIONS 2021 VS. 2019



# Payment Methods

- Keyed lockers: cash, check or credit
- BikeLink lockers & Bike Station
  - \$.05 per hour
  - BikeLink Card
  - BikeLink mobile app
- Racks & Bikeep: free
  - Bikeep Racks employ “Clipper-as-key”



# BikeLink-Clipper Integration

- Partial Clipper Integration: “Clipper-as-key”
  - Piloted by BART in 2017
  - Available at 84 non-BART locations (700 spaces) Bay Area-wide
  - Analogous to BayWheels or Bikekeep integration
- Clipper 2 (C2) going live in 2022-2023
  - Account-based
  - Able to interface with “third Party mobility services”
  - All parties interested in integration
  - Security-related technical challenges need to be worked through
  - Two methods:
    - Clipper-as-key — requires networking lockers
    - Mobile Wallet — possible without networking eLockers for the BikeLink mobile app and for C2 cards only if MTC/Cubic grant eLock read-write access



## FREE High-Security Bike Parking

### 1 REGISTER CLIPPER CARD



ONLINE WITH BIKEHUB:  
[basic.bikehub.com](http://basic.bikehub.com)

7

### 2 CHOOSE A RACK & PARK



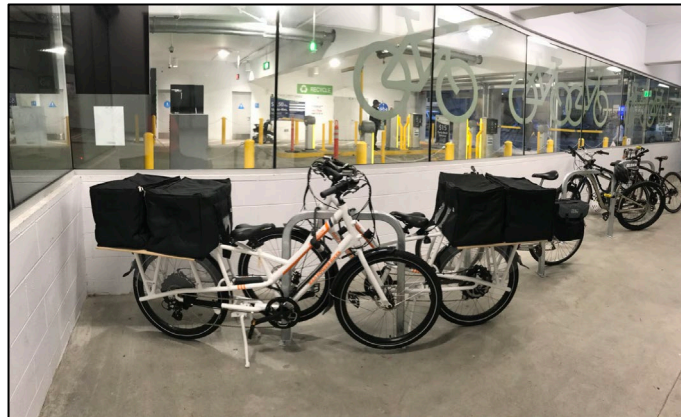
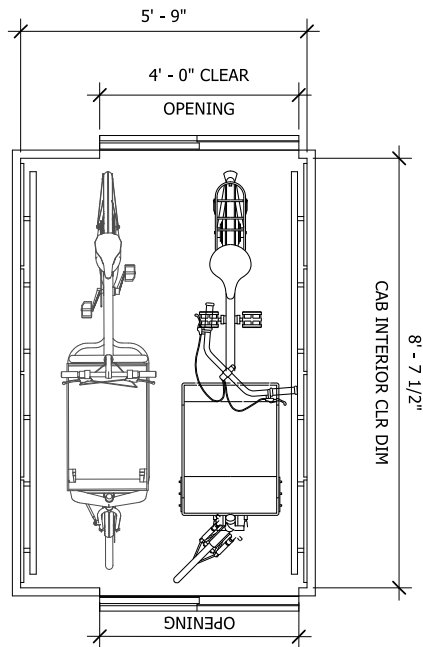
### 3 TAP CARD TO LOCK





# Accommodating Cargo & Family Bikes

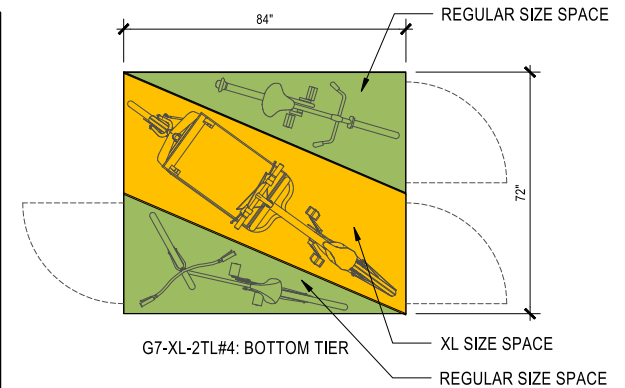
- Bike Stations
- Elevators
- New locker trial



**Bikes on BART**  
BART Elevator Dimensions

As more of our riders utilize bikes on BART, and larger cargo bikes in particular, we have created this guide to assist in navigating BART elevators. The elevator dimensions included are intended as a guide. As individual bikes and elevators may vary, please use your best judgment in utilizing system elevators.

For more information about Bikes on BART, visit [bart.gov/bikes](http://bart.gov/bikes).



 **CARGO, OVERSIZE & ADAPTIVE BIKES ONLY** 



# Thank you!

