




Community Hub Initiative for Youth

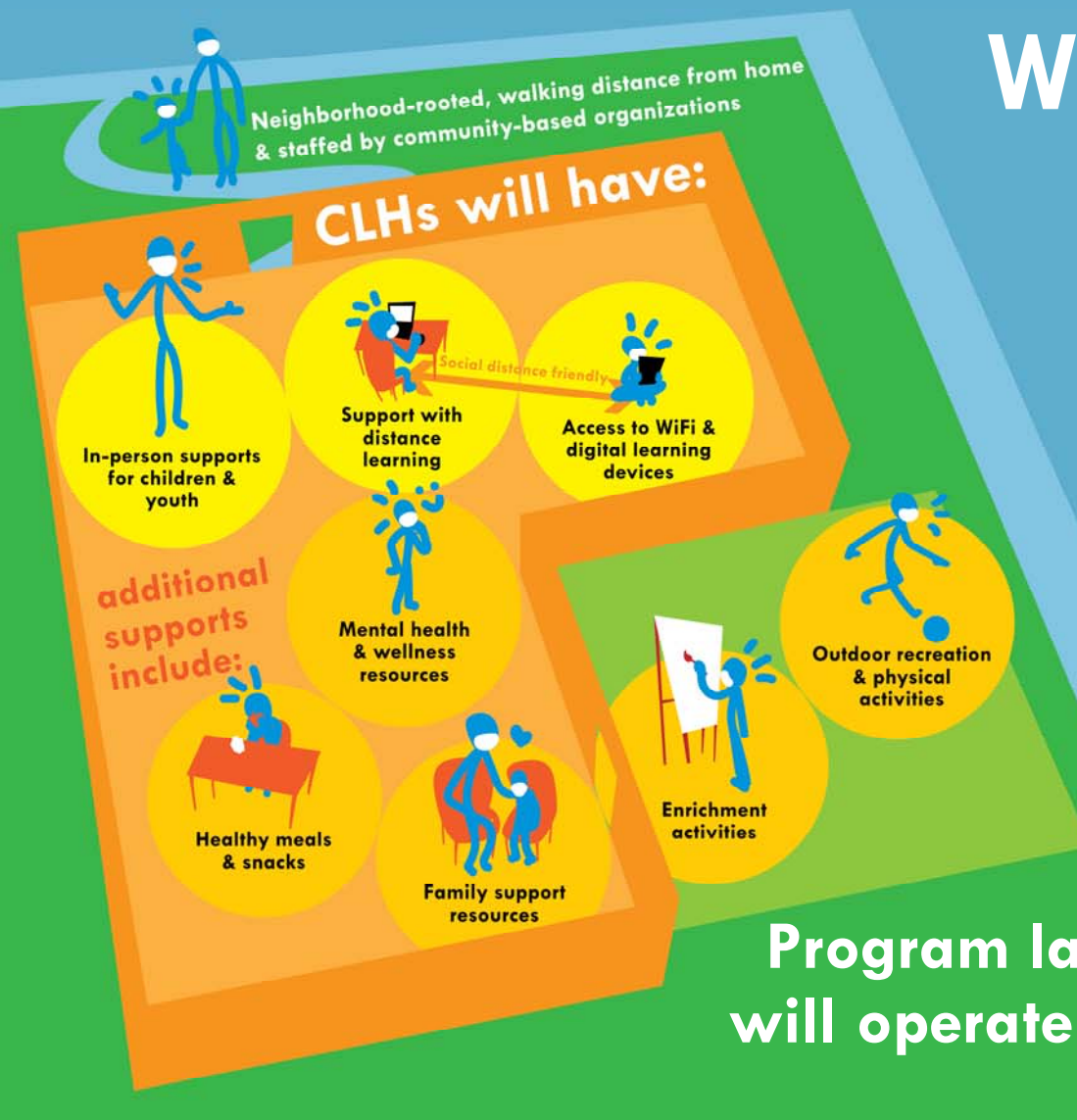
Joint City, School District, and City College Select Committee (9/25/2020)



“It will take a village to address the wide range of learning needs for our City’s children and youth during the COVID-19 pandemic, and the Community Hubs will provide a much-needed resource for our most vulnerable students.”

—Mayor London N. Breed

What are Community Hubs for youth?



- ✓ Neighborhood-based
- ✓ In-person supports for distance learning
- ✓ Build social-emotional wellbeing
- ✓ Staffed with youth development professionals

Program launched on September 14th. Hubs will operate Monday-Friday 8:30am-5:30pm

We're fighting increasing disparities for our most marginalized students:



Residents of HOPE SF, public housing, & SROs



Homeless youth



Foster youth



Low-income households



English Language Learners

Hubs are designed to keep students & staff safe from COVID-19



All staff will have access to surveillance testing



Masks worn at all times besides mealtimes



6 feet of distance between all participants & staff



Everyone will be screened for COVID-19 symptoms before they enter the Hub



Consistent, small cohorts of 14 kids & 2 staff with no mixing between groups



Regular cleaning, handwashing, & sanitizing

We're connecting to these high-need communities with 3 phases of **focused outreach**

Phase I
Grades K-6

Phase II
Grades K-12

Phase III
Continued expansion of K-12

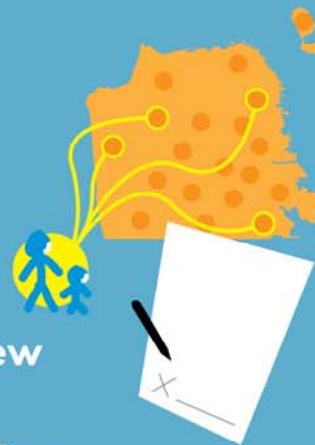
1 Community-based organizations will outreach to **eligible families**



2 Parents/guardians will complete a Community Hub application



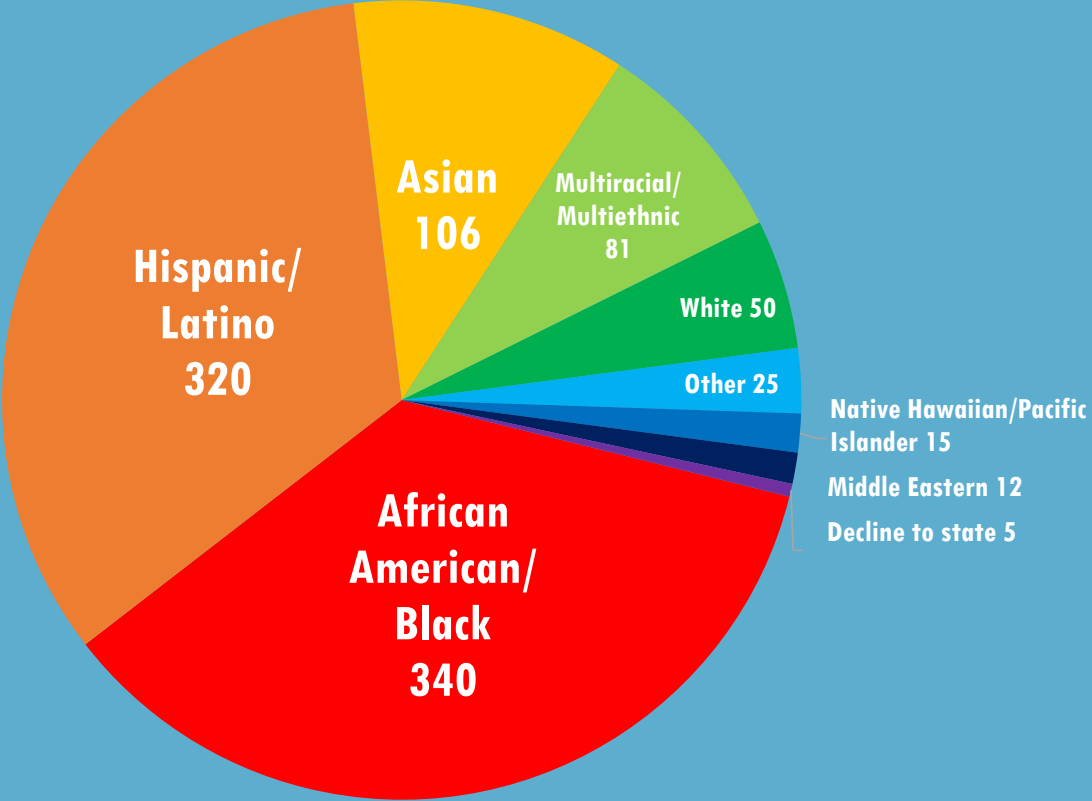
3 DCYF will review applications & prioritize based on **additional criteria**



4 If eligible & space is available, an acceptance notification will be sent that must be signed and returned

Enrollment Status Update (9/23/20)

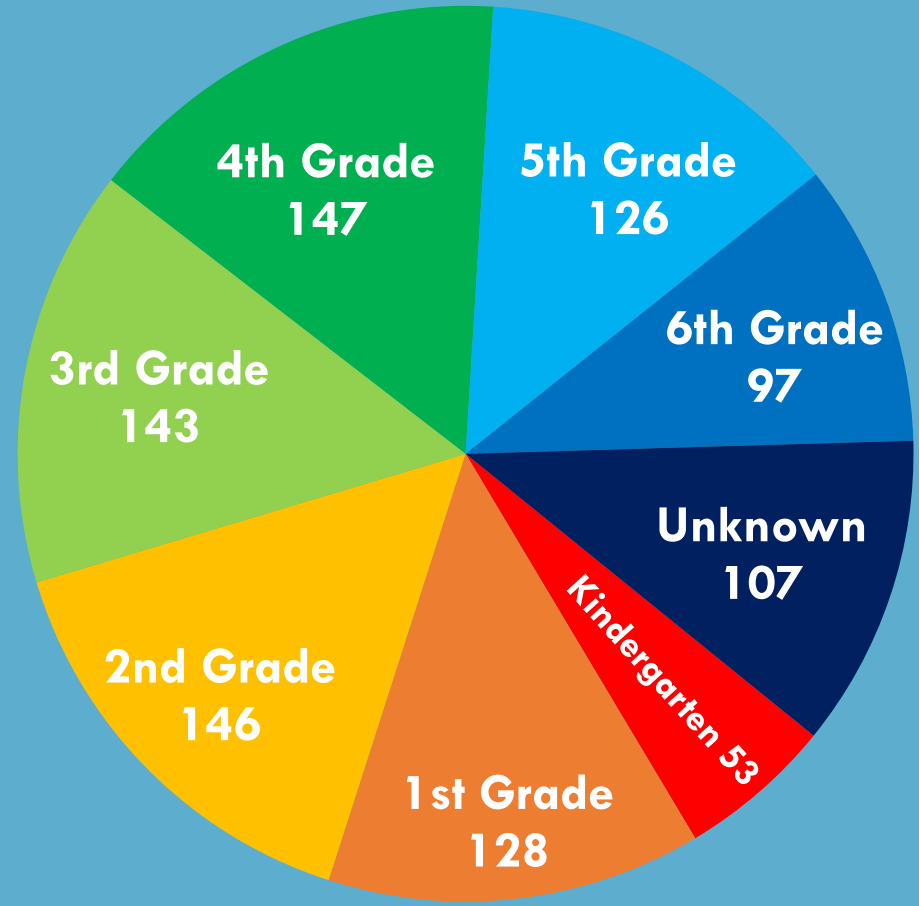
Race/Ethnicity	Total Youth	Percentage
African American/Black	340	36%
Asian	106	11%
Hispanic/Latino	320	34%
Middle Eastern	12	1%
Native Hawaiian/ Pacific Islander	15	2%
White	50	5%
Multiracial/Multiethnic	81	8%
Other	25	3%
Decline to state	5	1%



SM/1
SM/2
SM/3
C/2
D/1
SM/4
D/2
SM/5
D/3

Enrollment Status Update (9/23/20)

Grade Level	Total Youth	Percentage
Kindergarten	53	6%
1st Grade	128	14%
2nd Grade	146	15%
3rd Grade	143	15%
4th Grade	147	16%
5th Grade	126	13%
6th Grade	97	10%
Unknown	107	11%

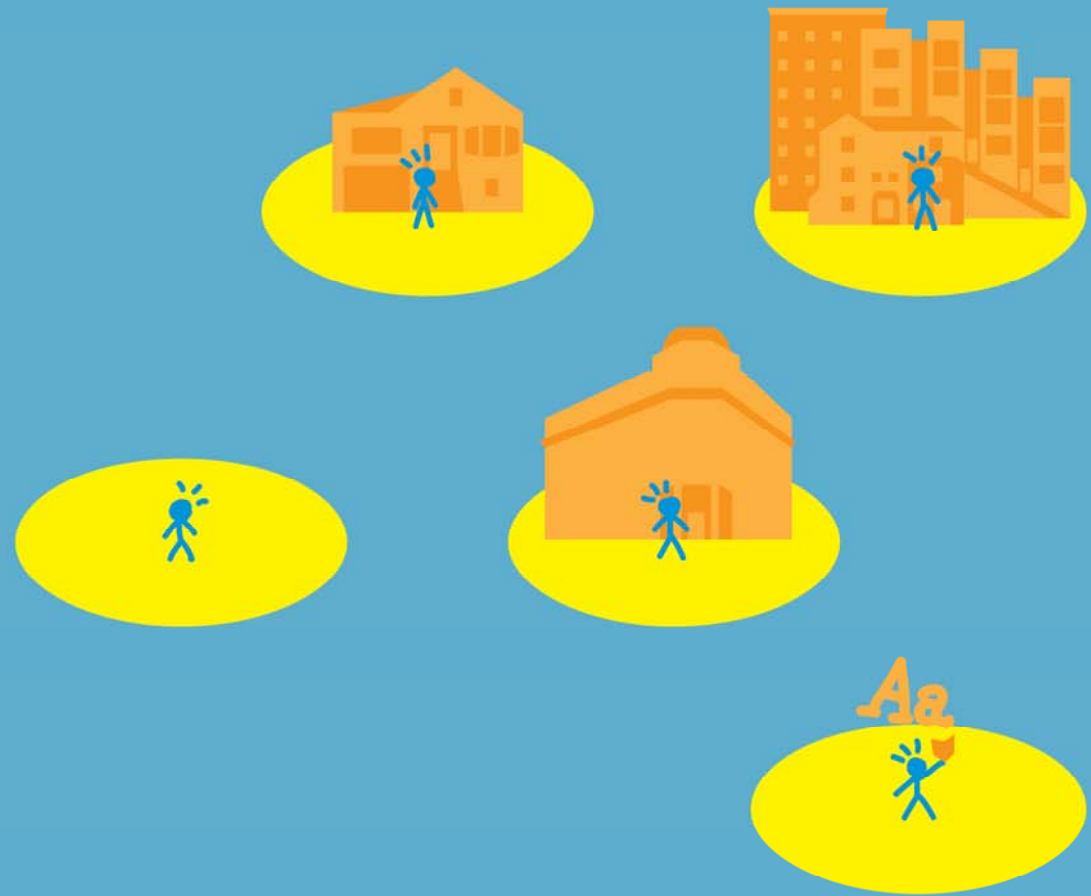


Slide 8

- SM(1)** Woah. We can not show 7th to 12th grade data. Can we just hide this? [@Duffy, Sarah (CHF)] [@Abrazaldo, Walter (CHF)] [@Sapinoso, Ryan (CHF)] [@Kimzey, Colin (CHF)] [@Caminong, Dori (CHF)]
Su, Maria (CHF), 9/24/2020
- SM(2)** Maybe call it "Unknown" or "other"? It's not a large number anyways.
Su, Maria (CHF), 9/24/2020
- SM(3)** Also, Sup Ronen did ask....of the people we invite what was the "denial" rate?
Su, Maria (CHF), 9/24/2020
- C(2)** [@Su, Maria (CHF)] Got it. We will adjust the deck.
Caminong, Dori (CHF), 9/24/2020
- D(1)** [@Su, Maria (CHF)] the 7-12 graders are BGC (as I think you are aware...)
Duffy, Sarah (CHF), 9/24/2020
- SM(4)** Yes but I do not want to highlight it here.
Su, Maria (CHF), 9/24/2020
- D(2)** [@Su, Maria (CHF)] we can report those #s when we get to phase 2.
Duffy, Sarah (CHF), 9/24/2020
- SM(5)** yes.
Su, Maria (CHF), 9/24/2020
- D(3)** [@Su, Maria (CHF)] For denial rate: the percent of applications submitted but not placed is 2.7% (27/981). These applications were not accepted because the code used was not one of the valid outreach codes that DCYF provided to the organizations conducting outreach.
Duffy, Sarah (CHF), 9/24/2020

Enrollment Status Update (9/23/20)

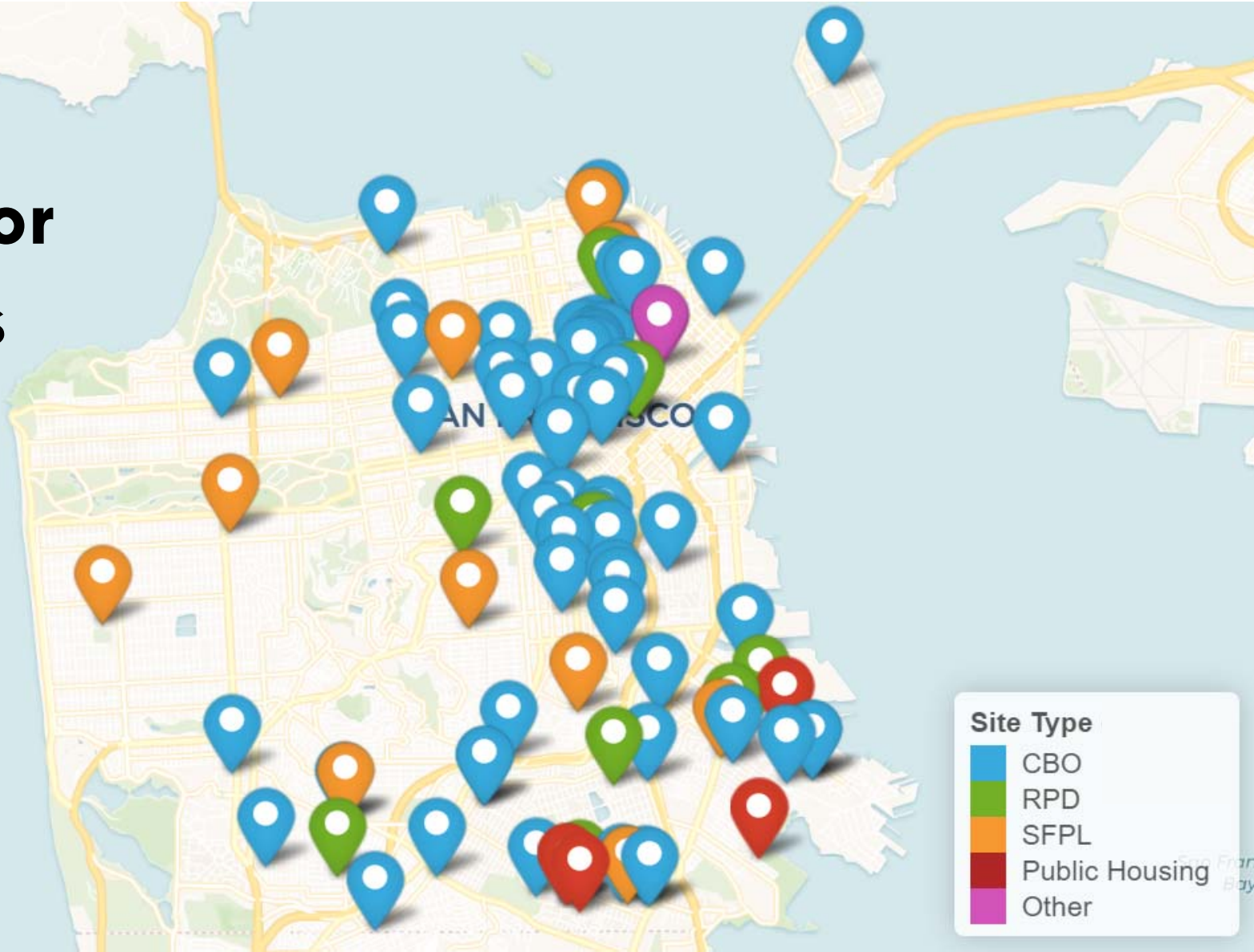
Priority Population	Total Youth	Percentage
Homeless youth	65	5%
Youth in Public Housing	269	19%
Youth in SROs	28	2%
Youth with language support needs	153	11%
Arabic	7	0.5%
Chinese	35	2%
Russian	1	0%
Spanish	108	8%
Vietnamese	2	0%



Phase 1 Hubs Status (9/23/20)

Supervisor District	Sites	Capacity	Enrolled	Slots available
District 1	2	52	7	45
District 2	1	12	6	6
District 3	3	89	85	4
District 5	7	179	88	91
District 6	11	280	199	81
District 7	2	56	22	34
District 8	4	111	79	33
District 9	8	198	130	68
District 10	13	312	220	92
District 11	4	138	105	33
Grand Total	55	1427	941	487

Hub Sites for ALL Phases (9/23/20)



Making San Francisco



a great place to grow up

