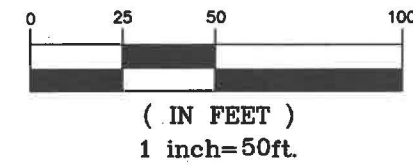


GRAPHIC SCALE

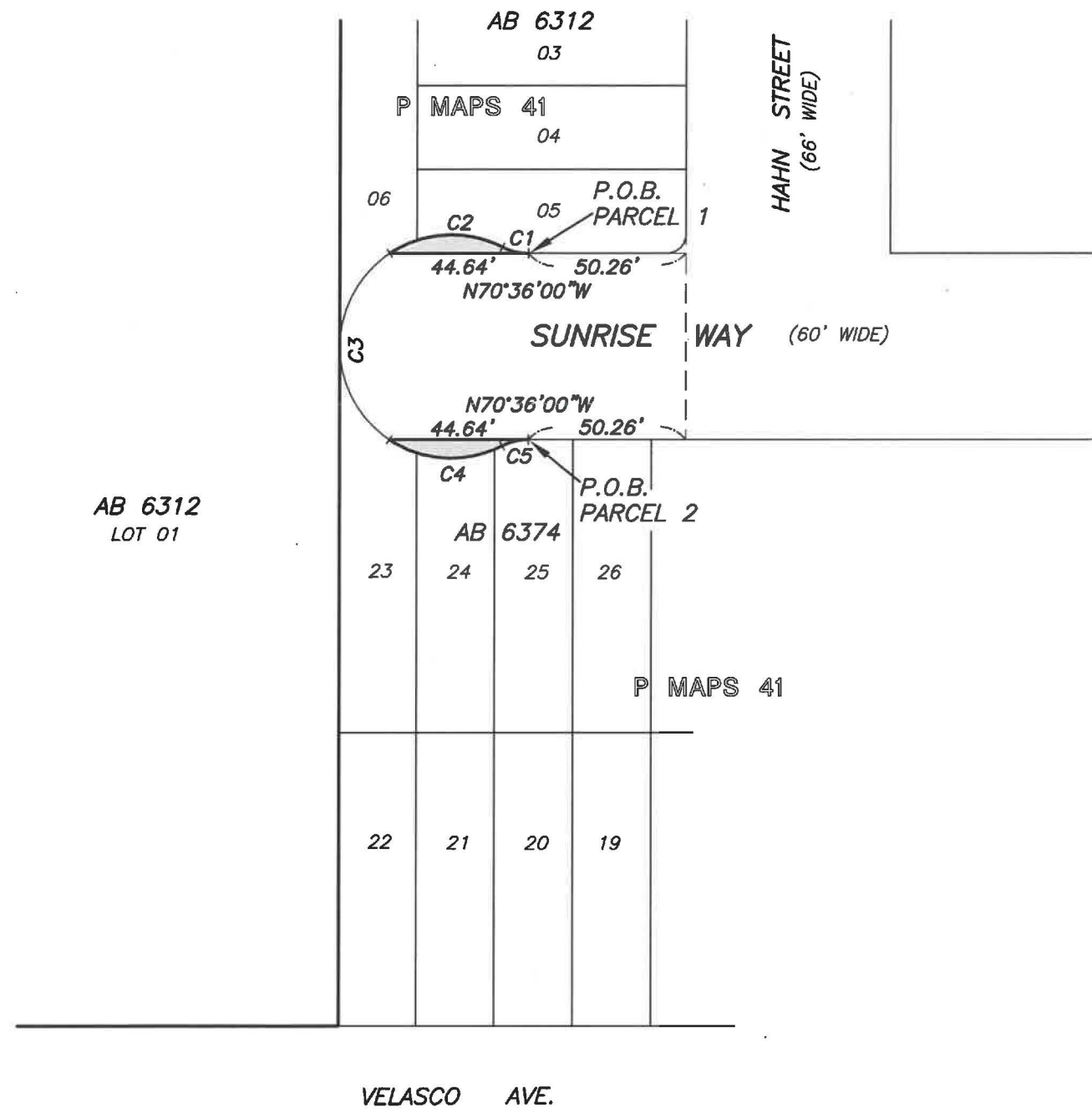


LEGEND

- PORTIONS OF CITY STREETS BEING VACATED
- AB 6312, LOT 05 ASSESSOR'S BLOCK & LOT

CURVE TABLE

CURB	RADIUS	LENGTH	DELTA
C1	18.00'	8.57'	27°15'58"
C2	36.00'	38.22'	60°49'25"
C3	36.00'	70.93'	112°53'07"
C4	36.00'	38.22'	60°49'25"
C5	18.00'	8.57'	27°15'58"



AB 6312
LOT 01



APPROVED:

Bruce R. Storrs

BRUCE R. STORRS
CITY & COUNTY SURVEYOR

8/27/2018

DATE

CITY AND COUNTY OF SAN FRANCISCO PUBLIC WORKS
SUBDIVISION AND MAPPING

STREET VACATION OF A PORTION OF SUNRISE WAY, WEST OF HAHN STREET

FILE: SUR 2018-004

SHEET 1 OF 1

SCALE: 1:50

REVISION