

# Central Waterfront Area Plan

## Add a Section 9 to the Central Waterfront Area Plan titled “Public Realm Implementation”:

### *PUBLIC REALM IMPLEMENTATION.*

*The Planning Department, in partnership with San Francisco Public Works, the San Francisco Municipal Transportation Agency, the Port of San Francisco, and the Recreation and Parks Department, led a robust public process from September 2015 to November 2017 engaging numerous community stakeholders to develop the Central Waterfront – Dogpatch Public Realm Plan. The Public Realm Plan developed specific recommendations for implementing Built Form, Transportation, Streets, and Open Space Objectives and Policies of the Central Waterfront Area Plan. The 2018 Central Waterfront – Dogpatch Public Realm Plan serves as the guiding framework for the investment of complete streets, parks and open spaces within the Central Waterfront – Dogpatch Public Realm Plan Area. This Public Realm Plan, which may be amended from time to time at the discretion of the Planning Commission, is incorporated herein by reference.*

*Objective 9.1 DESIGN AND IMPLEMENT COMPLETE STREETS AND OPEN SPACE IMPROVEMENTS CONSISTENT WITH THE CENTRAL WATERFRONT – DOGPATCH PUBLIC REALM PLAN.*

*Policy 9.1.1 Encourage new development in the Central Waterfront – Dogpatch Public Realm plan area to implement complete streets improvements recommended in the 2018 Central Waterfront – Dogpatch Public Realm Plan, pending necessary review and approvals of the pertinent City agencies.*

*Policy 9.1.2 The City shall seek to implement the 2018 Central Waterfront – Dogpatch Public Realm Plan to the maximum extent feasible, both through its oversight and permitting of privately sponsored street improvements, as well as City-sponsored improvements.*



**CITY PLANNING COMMISSION  
INITIATION HEARING | 28 JUNE 2018**

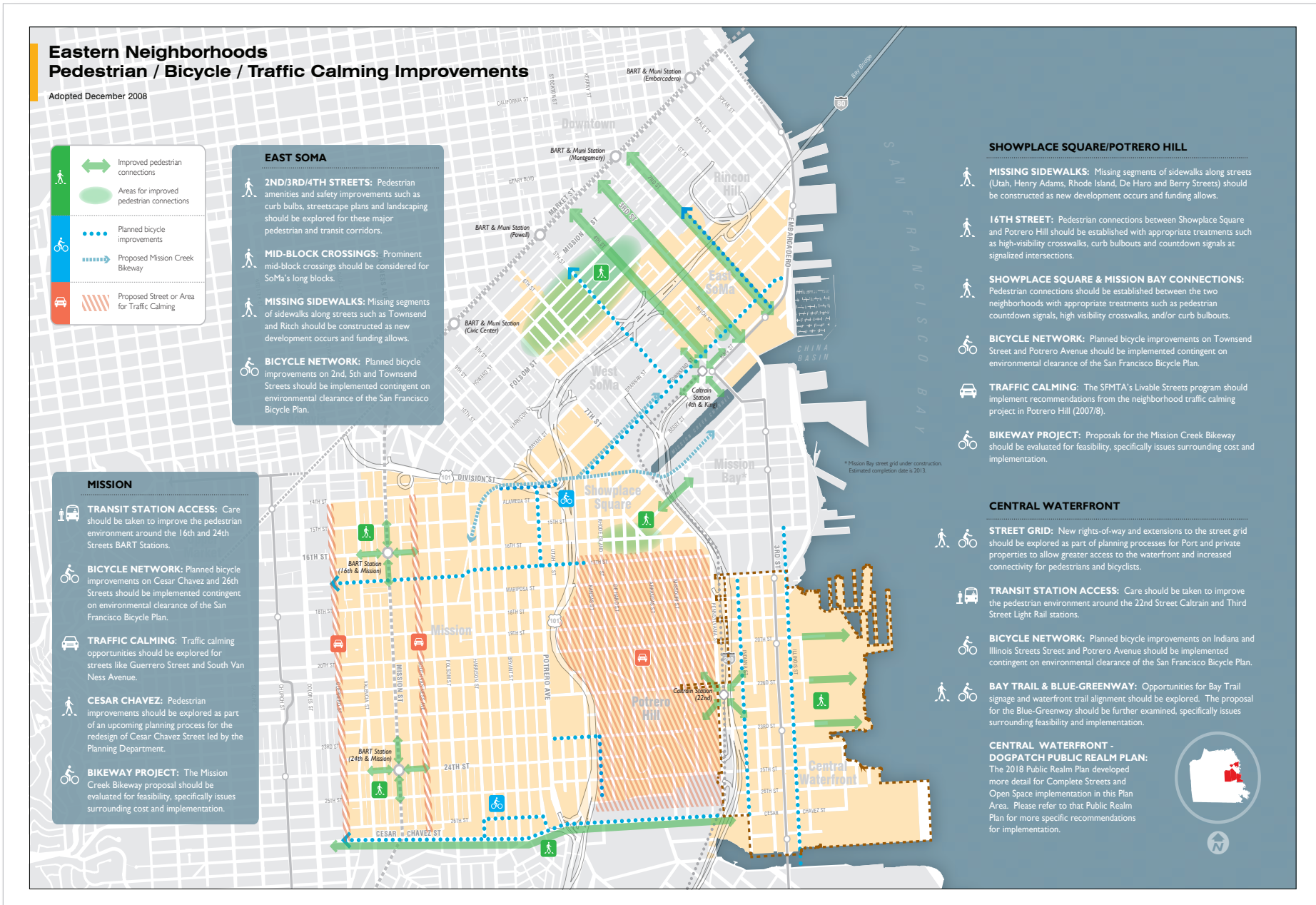


**San Francisco  
Planning**



# Central Waterfront Area Plan

## MAP 4. Pedestrian / Bicycle / Traffic Calming Improvements



### amendments



**CENTRAL WATERFRONT - DOGPATCH PUBLIC REALM PLAN:**  
The 2018 Public Realm Plan developed more detail for Complete Streets and Open Space implementation in this Plan Area. Please refer to that Public Realm Plan for more specific recommendations for implementation.



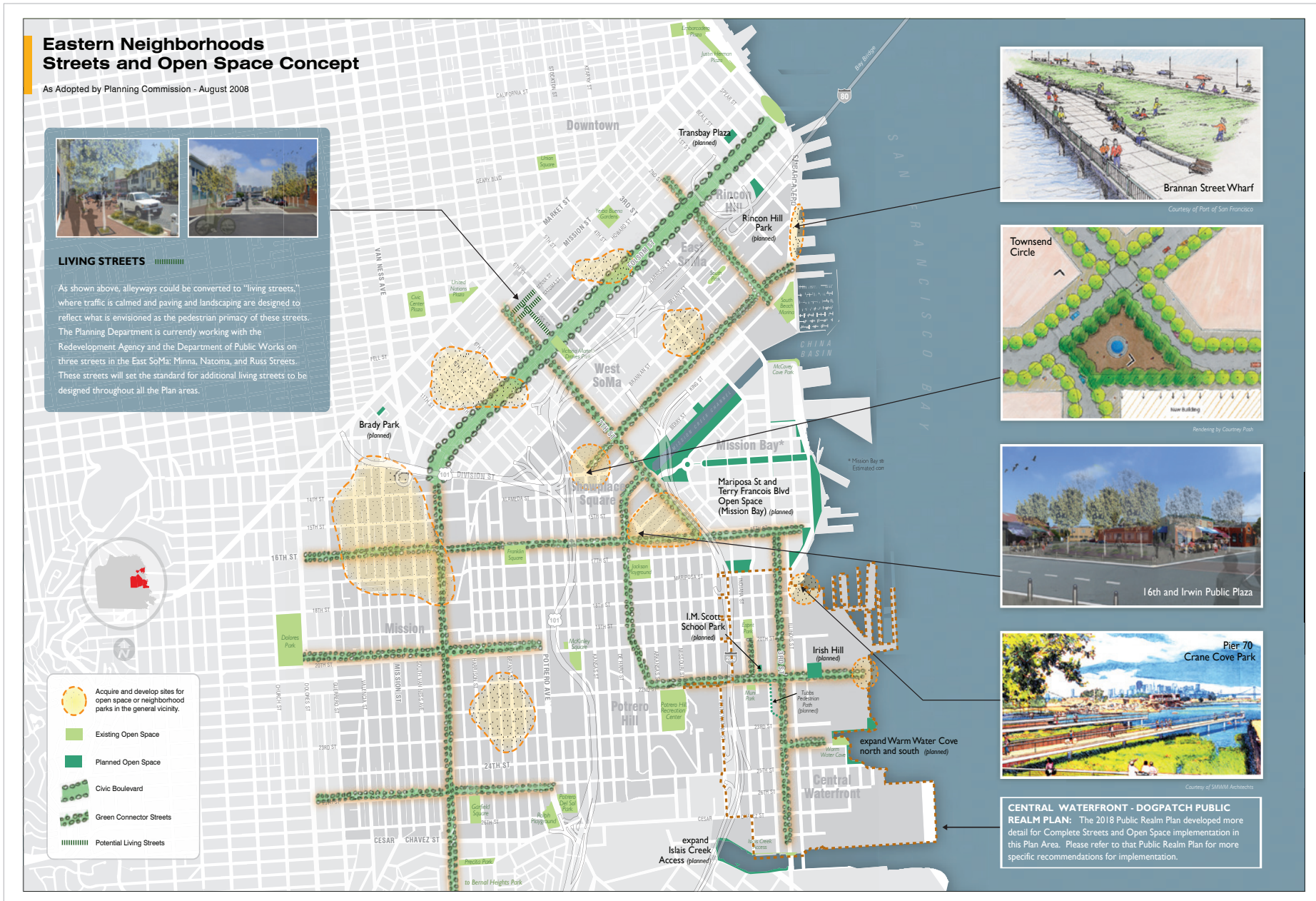
**CITY PLANNING COMMISSION**  
**INITIATION HEARING | 28 JUNE 2018**





# Central Waterfront Area Plan

## MAP 5. Streets and Open Space Concept

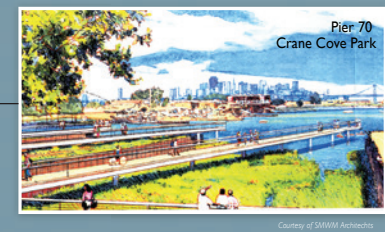
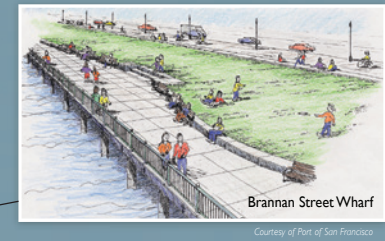


### amendments



Courtesy of SMWM Architects

**CENTRAL WATERFRONT - DOGPATCH PUBLIC REALM PLAN:** The 2018 Public Realm Plan developed more detail for Complete Streets and Open Space implementation in this Plan Area. Please refer to that Public Realm Plan for more specific recommendations for implementation.



**CENTRAL WATERFRONT - DOGPATCH PUBLIC REALM PLAN:** The 2018 Public Realm Plan developed more detail for Complete Streets and Open Space implementation in this Plan Area. Please refer to that Public Realm Plan for more specific recommendations for implementation.



CITY PLANNING COMMISSION  
INITIATION HEARING | 28 JUNE 2018



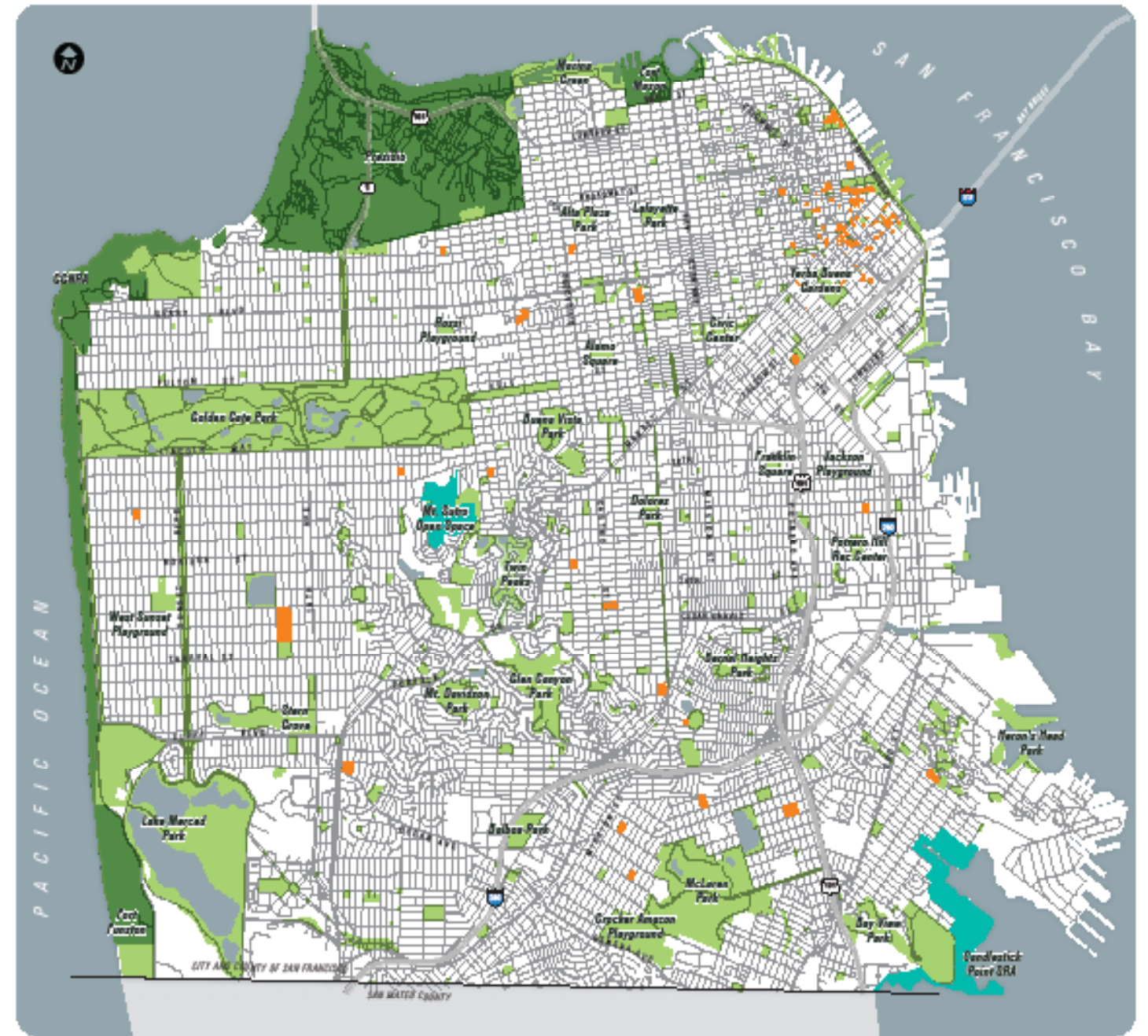


# Recreation & Open Space Element

## MAP 1. Existing Open Space

- add the public realm plan boundary
- add footnote:

*The map is to be used for reference purposes only. For parcel specific details, please refer to adopted area plans. The 2018 Central Waterfront – Dogpatch Public Realm Plan conducted an updated inventory of parks and open spaces within a quarter mile of the Central Waterfront Plan Area.*



### Existing Open Space

- SFPUC Land in San Francisco City Limits: 3,433 acres**
- State-Owned Land: 255 acres**  
Candlestick, Mount Sutro
- Federal-Owned Land:**  
Ocean Beach, Fort Funston, Fort Mason, Lands End, Sutro Heights, China Beach: 142 acres  
Presidio: 1000 acres
- Other: 580 acres**  
Campuses, pilot program schoolyards, SFPUC lands, SFFRA parks, SF Port parks, linear open spaces such as boulevards and parkways, and privately owned, publicly accessible open spaces in the Downtown.



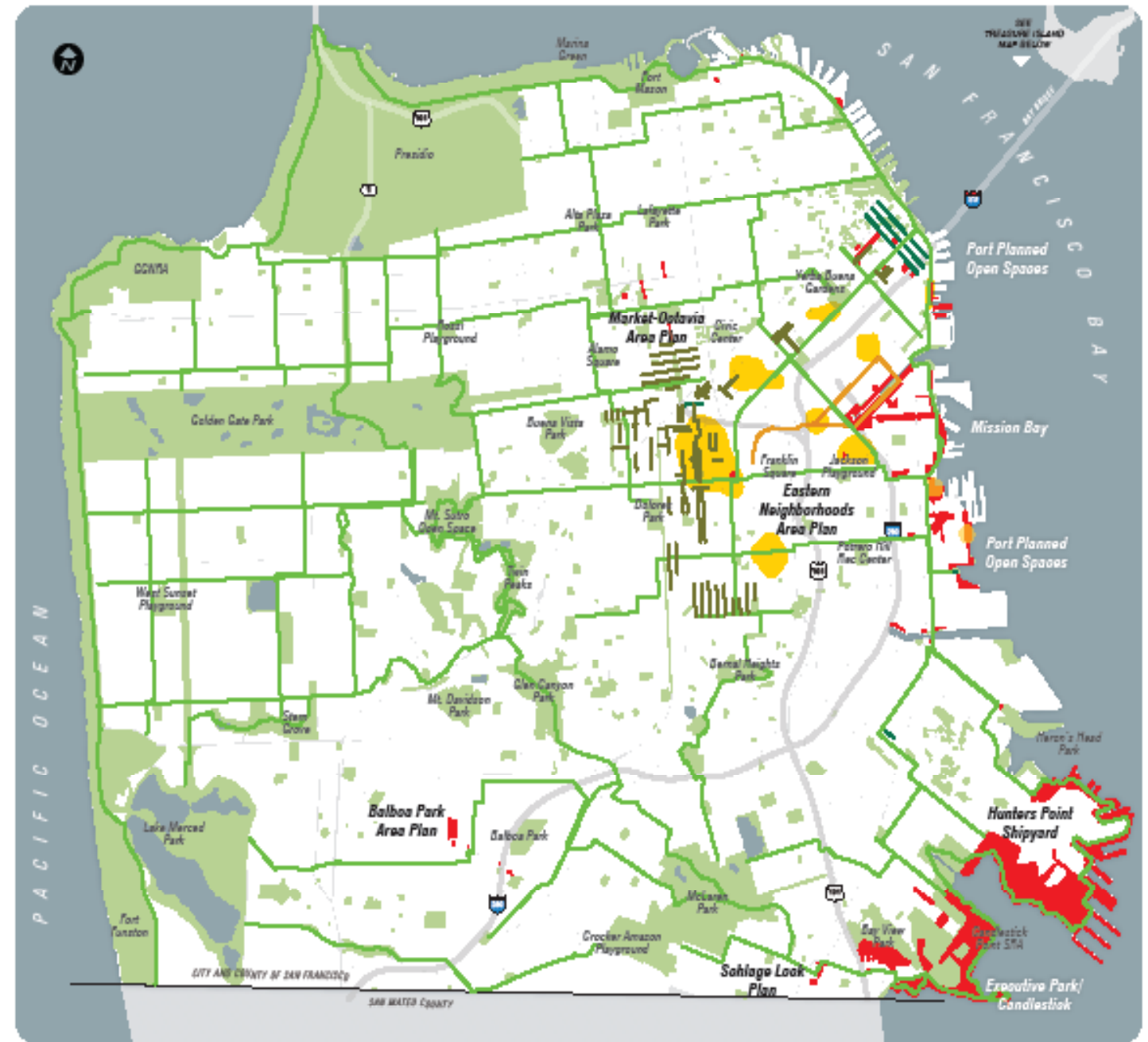


# Recreation & Open Space Element

## MAP 3. Existing and Proposed Open Space

- add the public realm plan boundary
- add footnote:

*The map is to be used for reference purposes only. For parcel specific details, please refer to adopted area plans. The 2018 Central Waterfront – Dogpatch Public Realm Plan conducted an updated inventory of parks and open spaces within a quarter mile of the Central Waterfront Plan Area.*



### Existing and Proposed Open Space

- |  |  |
|--|--|
|  Potential Living Alleys    |  Proposed Open Space  |
|  Potential Living Streets   |  Existing Open Space  |
|  Proposed Green Connections |  Acquire and develop sites for open space (Balboa Neighborhood Area Plan) |
|  Off-Street Multi-Use Paths |  |



MAP 03



CITY PLANNING COMMISSION  
INITIATION HEARING | 28 JUNE 2018



## Urban Design Element

# MAP 2: Plan for Street Landscaping and Lighting

- add the public realm plan boundary
- add footnote:

### CENTRAL WATERFRONT -DOGPATCH

### PUBLIC REALM PLAN: The 2018 Public Realm

### Plan developed concept designs for Complete

### Streets and Open Spaces in this Public Realm

### Plan Area. Please refer to that Public Realm

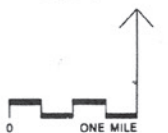
### Plan for more specific recommendations for

### implementation.



PLAN FOR STREET LANDSCAPING AND LIGHTING

Map 2



#### MAP APPROVED BY THE BOARD OF SUPERVISORS

The notation below in italics represents a recent amendment to the General Plan that has been approved by the Board of Supervisors after this map was originally adopted. The change will be added to the map during the next map update.

- Delete the shaded areas within the Mission Bay area and add a boundary around the Mission Bay area with a line that leads to a reference that states "See Mission Bay North and Mission Bay South Redevelopment Plans."
- Add a boundary area around the Hunters Point Shipyard area with a line that leads to a reference that states "See Hunters Point Redevelopment Plan and Hunters Point Shipyard Area Plan."
- Add a boundary area around Candlestick Point with a line that leads to a reference that states "See Candlestick Point SubArea Plan and Bayview Hunters Point Redevelopment Plan."



CITY PLANNING COMMISSION

INITIATION HEARING | 28 JUNE 2018



# Transportation Element:

## Map 11: Citywide Pedestrian Network

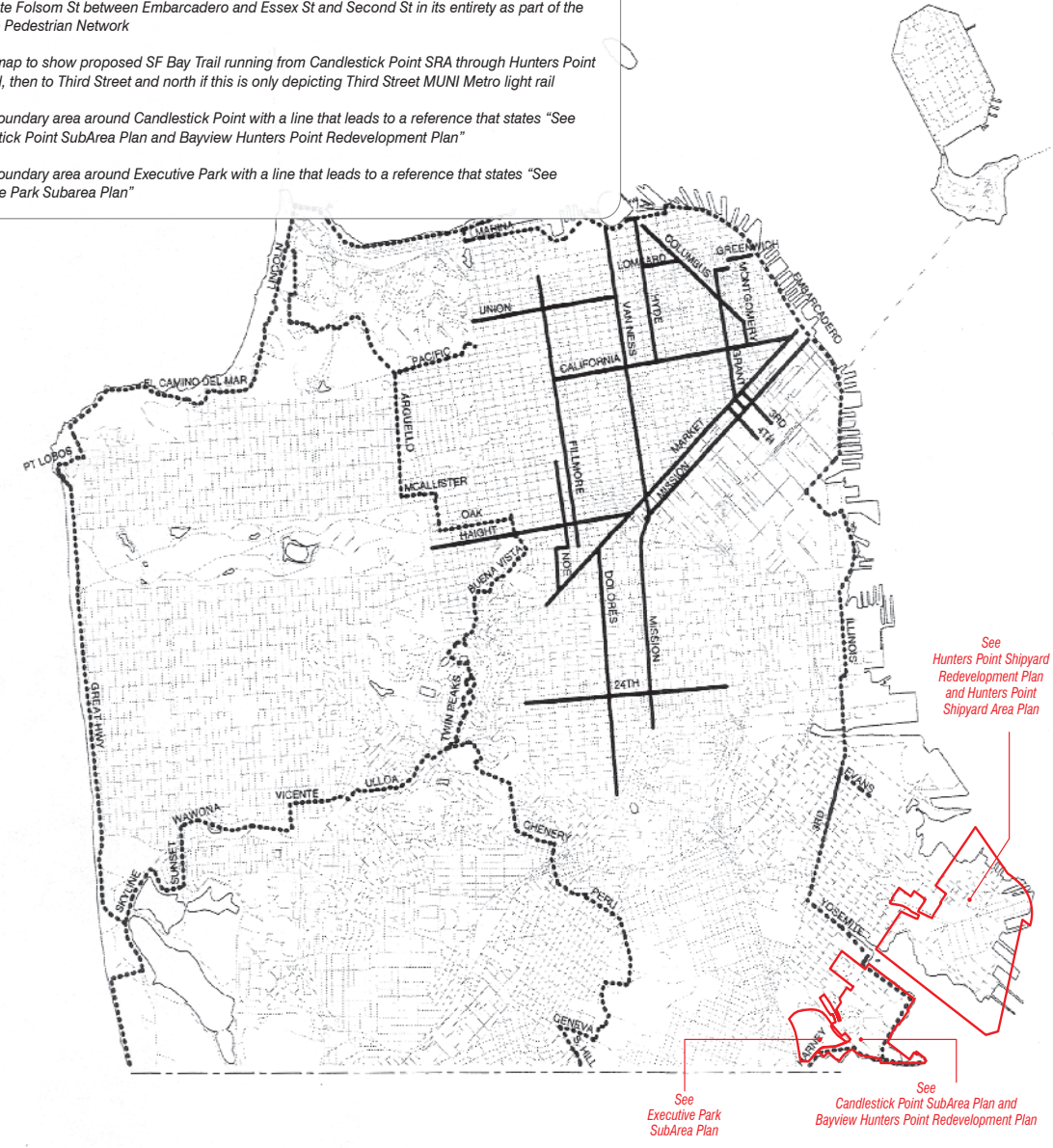
- add the public realm plan boundary
- add footnote:

CENTRAL WATERFRONT - DOGPATCH  
PUBLIC REALM PLAN: The 2018 Public Realm  
Plan developed concept designs for Complete  
Streets and Open Spaces in this Public Realm  
Plan Area. Please refer to that Public Realm  
Plan for more specific recommendations for  
implementation.

**MAP APPROVED BY THE BOARD OF SUPERVISORS**

The notation below in italics represents a recent amendment to the General Plan that has been approved by the Board of Supervisors after this map was originally adopted. The change will be added to the map during the next map update.

- Add a boundary area around the Hunters Point Shipyard area with a line that leads to a reference that states "See Hunters Point Redevelopment Plan and Hunters Point Shipyard Area Plan"
- Designate Folsom St between Embarcadero and Essex St and Second St in its entirety as part of the Citywide Pedestrian Network
- Revise map to show proposed SF Bay Trail running from Candlestick Point SRA through Hunters Point Shipyard, then to Third Street and north if this is only depicting Third Street MUNI Metro light rail
- Add a boundary area around Candlestick Point with a line that leads to a reference that states "See Candlestick Point SubArea Plan and Bayview Hunters Point Redevelopment Plan"
- Add a boundary area around Executive Park with a line that leads to a reference that states "See Executive Park Subarea Plan"



**CITYWIDE PEDESTRIAN NETWORK**

- Citywide Pedestrian Network Street
- ..... Bay, Ridge and Coast Trail

**Map 11**



# Transportation Element:

## Map 12: Neighborhood Pedestrian Streets

- add the public realm plan boundary
- add footnote:

CENTRAL WATERFRONT - DOGPATCH  
PUBLIC REALM PLAN: The 2018 Public Realm Plan developed concept designs for Complete Streets and Open Spaces in this Public Realm Plan Area. Please refer to that Public Realm Plan for more specific recommendations for implementation.

**MAP APPROVED BY THE BOARD OF SUPERVISORS**

The notation below in italics represents a recent amendment to the General Plan that has been approved by the Board of Supervisors after this map was originally adopted. The change will be added to the map during the next map update.

- Amend the area for Mission Bay to reflect the street grid and pedestrian network of the Mission Bay North and Mission Bay South Redevelopment Plans and Design for Development documents. Add the boundary of the Mission Bay area with a line to text that states "See Mission Bay North and Mission Bay South Redevelopment Plans"
- Add a boundary area around the Hunters Point Shipyard area with a line that leads to a reference that states "See Hunters Point Redevelopment Plan and Hunters Point Shipyard Area Plan"
- Designate Folsom Street Between Embarcadero and Essex Street as a "Neighborhood Commercial Street"
- Designate Beale, Main, and Spear Streets as "Neighborhood Network Connection Streets" between Market and Folsom
- Add a boundary area around Candlestick Point with a line that leads to a reference that states "See Candlestick Point SubArea Plan and Bayview Hunters Point Redevelopment Plan"
- Add a boundary area around Executive Park with a line that leads to a reference that states "See Executive Park Subarea Plan"



**NEIGHBORHOOD PEDESTRIAN STREETS**

**Map 12**

- Neighborhood Commercial Street
- Neighborhood Network Connection Street

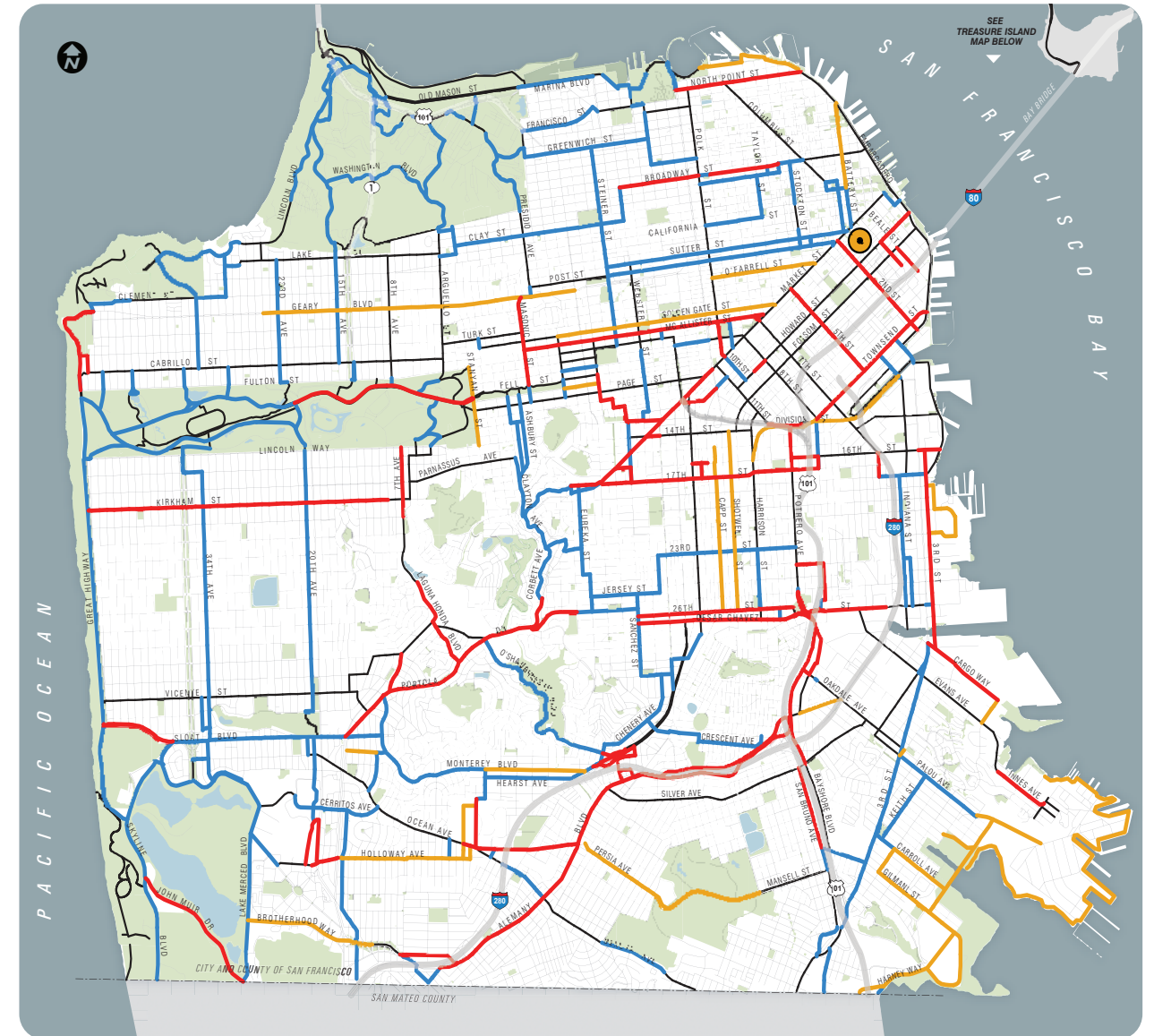




# Transportation Element: Map 13: Recommended Near-Term & Long-Term Improvements

- add the public realm plan boundary
- add footnote:

CENTRAL WATERFRONT - DOGPATCH  
PUBLIC REALM PLAN: The 2018 Public Realm Plan developed concept designs for Complete Streets and Open Spaces in this Public Realm Plan Area. Please refer to that Public Realm Plan for more specific recommendations for implementation.



**Recommended Near-Term and Long-Term Improvements to the Bicycle Route Network**

0 Miles 1  
**MAP 13**

- Near-Term Bicycle Improvement Projects
- Long-Term Bicycle Improvement Projects
- Minor Improvements to Bicycle Route Network
- Existing Bicycle Route Network
- Long-Term Transbay Transit Center Connection

