

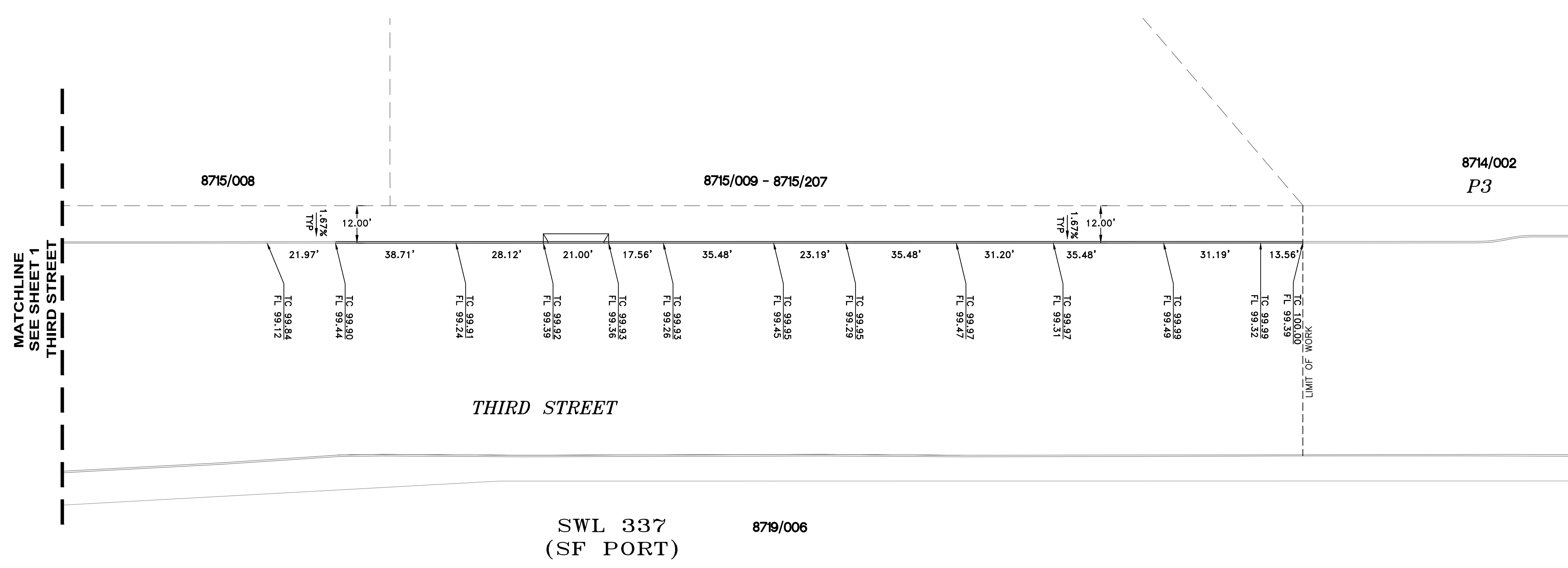
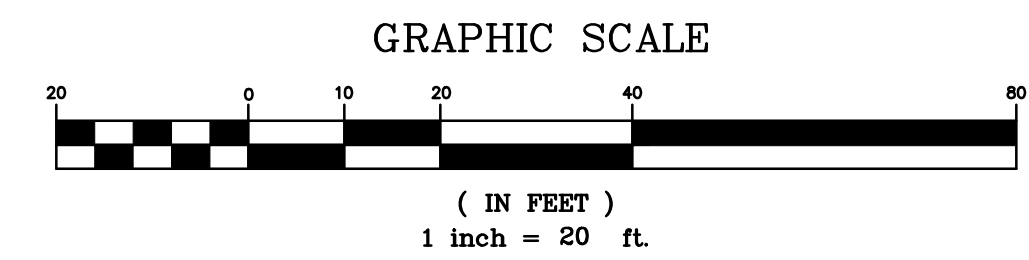
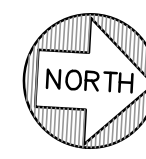
CITY AND COUNTY OF SAN FRANCISCO
 DEPARTMENT OF PUBLIC WORKS
 BUREAU OF STREET USE
 AND MAPPING

PROPOSED OFFICIAL GRADES AND
 AND OFFICIAL SIDEWALKS ALONG
 CHANNEL STREET AND THIRD STREET

SCALE: 1"=20'

SHEET 1 OF 2 SHEETS

| | | | | | | | |
|-----|------|---------------------------------|----|-----------|-------|----------|--|
| | | DRAWN: | | APPROVED: | | FILE: | |
| NO. | DATE | DESCRIPTION TABLE OF CHANGES | BY | CHECKED: | DATE: | Q20-1109 | |



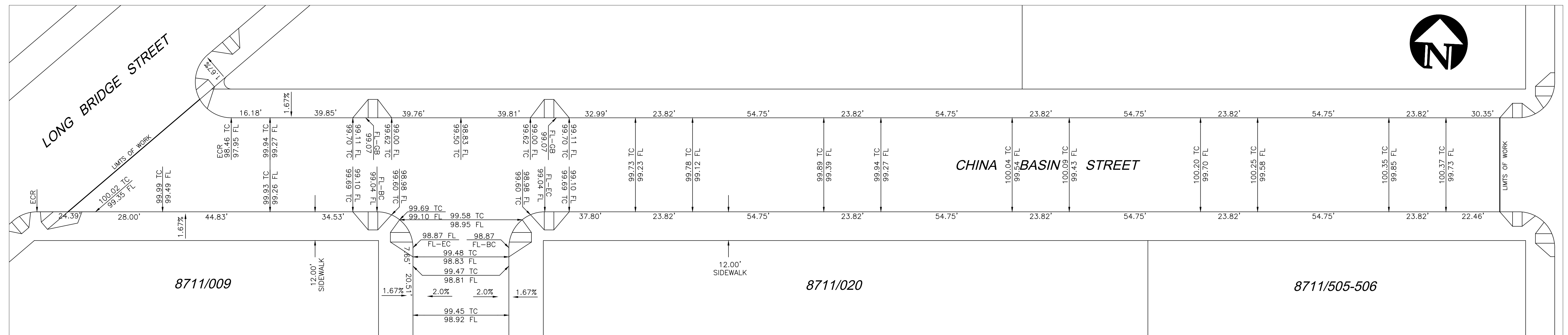
CITY AND COUNTY OF SAN FRANCISCO
DEPARTMENT OF PUBLIC WORKS
BUREAU OF STREET USE
AND MAPPING

PROPOSED OFFICIAL GRADES AND
OFFICIAL SIDEWALKS ALONG
CHANNEL STREET AND THIRD STREET

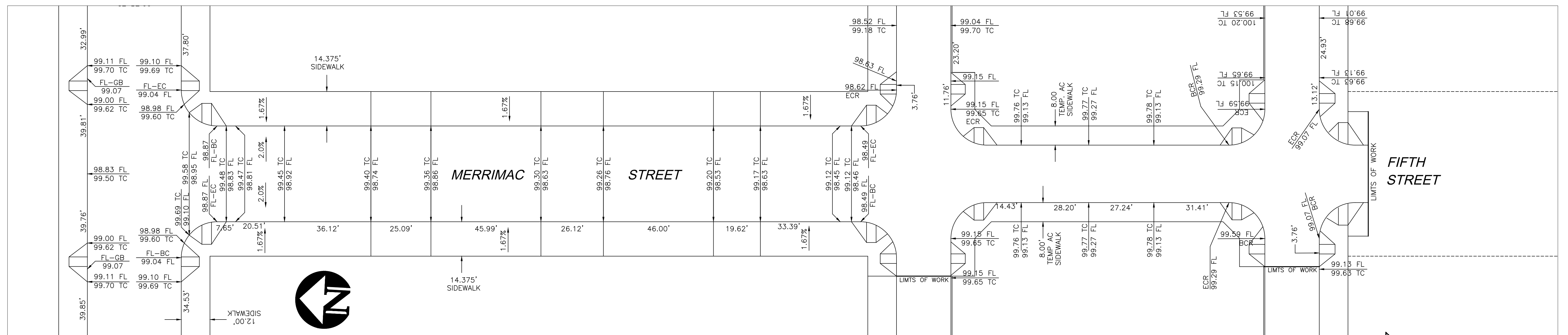
SCALE: 1"=20'

SHEET 2 OF 2 SHEETS

| | | | | | | | |
|-----|------|---------------------------------|----|-----------|-------|----------|--|
| | | DRAWN: | | APPROVED: | | FILE: | |
| NO. | DATE | DESCRIPTION TABLE OF CHANGES | BY | CHECKED: | DATE: | Q20-1109 | |

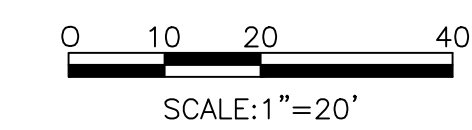


SEE SHEET 2



LEGEND

- BC BEGIN CURVE
- EC END CURVE
- FL FLOWLINE
- MC MIDCURVE
- TC TOP OF CURB
- ECR END CURB RETURN
- BCR BEGIN CURB RETURN
- GB GRADE BREAK



CITY AND COUNTY OF SAN FRANCISCO
DEPARTMENT OF PUBLIC WORKS
BUREAU OF STREET USE
AND MAPPING

PROPOSED OFFICIAL GRADES AND
OFFICIAL SIDEWALKS ALONG CHINA BASIN STREET,
MERRIMAC STREET, MISSION BAY BOULEVARD NORTH
AND MISSION BAY BOULEVARD SOUTH

SCALE: 1"=20'

SHEET 1 OF 2 SHEETS

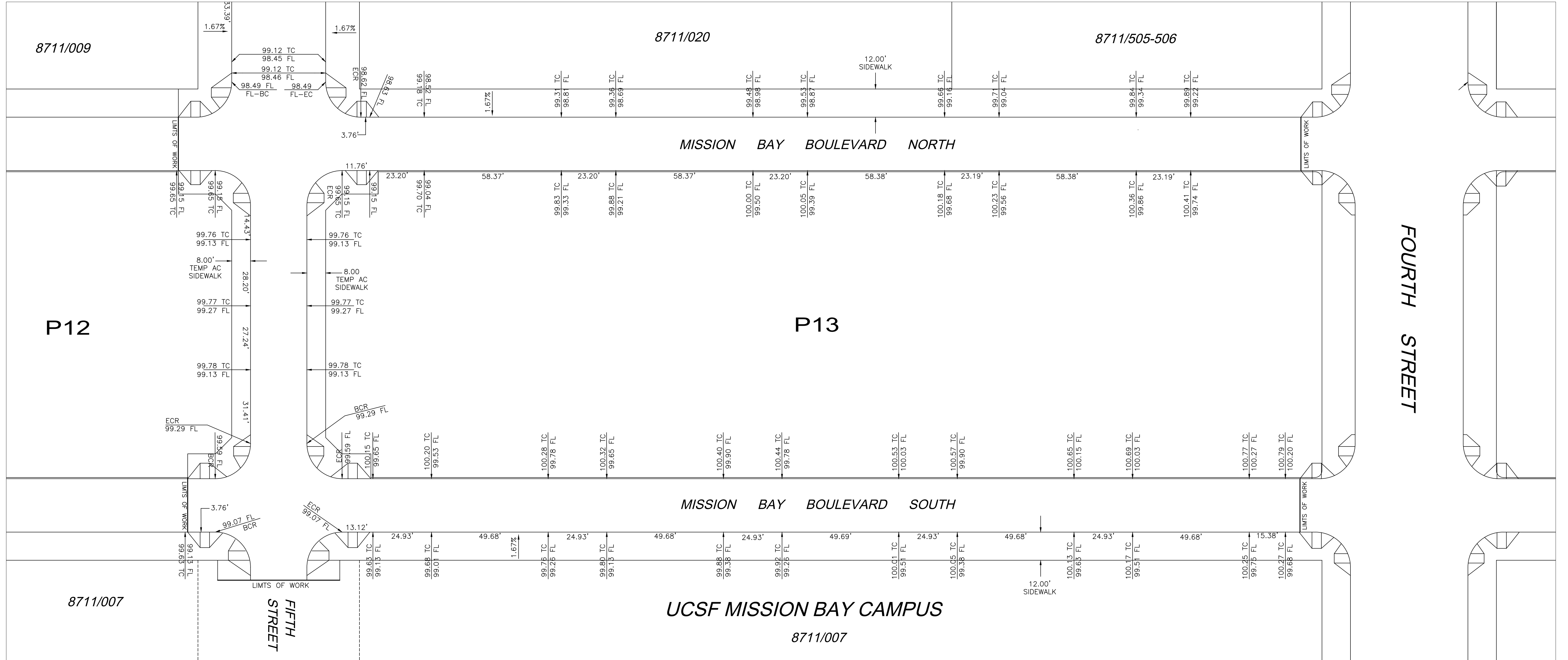
| NO. | DATE | DESCRIPTION TABLE OF CHANGES | BY | CHECKED: |
|-----|------|---------------------------------|----|----------|
| | | | | |

DRAWN:
APPROVED:
DATE:

APPROVED:
DATE:

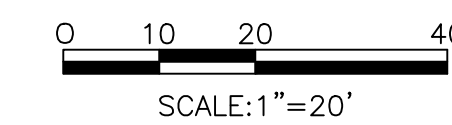
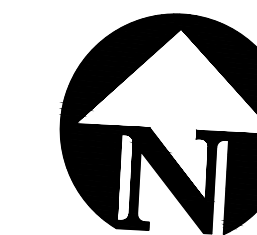
FILE:
Q-20-1110

SEE SHEET 1



LEGEND

- BC BEGIN CURVE
- EC END CURVE
- FL FLOWLINE
- MC MIDCURVE
- TC TOP OF CURB
- ECR END CURB RETURN
- BCR BEGIN CURB RETURN
- GB GRADE BREAK



CITY AND COUNTY OF SAN FRANCISCO
DEPARTMENT OF PUBLIC WORKS
BUREAU OF STREET USE
AND MAPPING

PROPOSED OFFICIAL GRADES AND
OFFICIAL SIDEWALKS ALONG CHINA BASIN STREET,
MERRIMAC STREET, MISSION BAY BOULEVARD NORTH
AND MISSION BAY BOULEVARD SOUTH

SCALE: 1"=20'

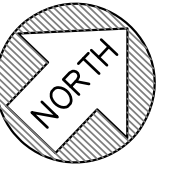
SHEET 2 OF 2 SHEETS

| NO. | DATE | DESCRIPTION TABLE OF CHANGES | BY | CHECKED: |
|-----|------|---------------------------------|----|----------|
| | | | | |

DRAWN:
BY

APPROVED:
DATE:

FILE:
Q-20-1110

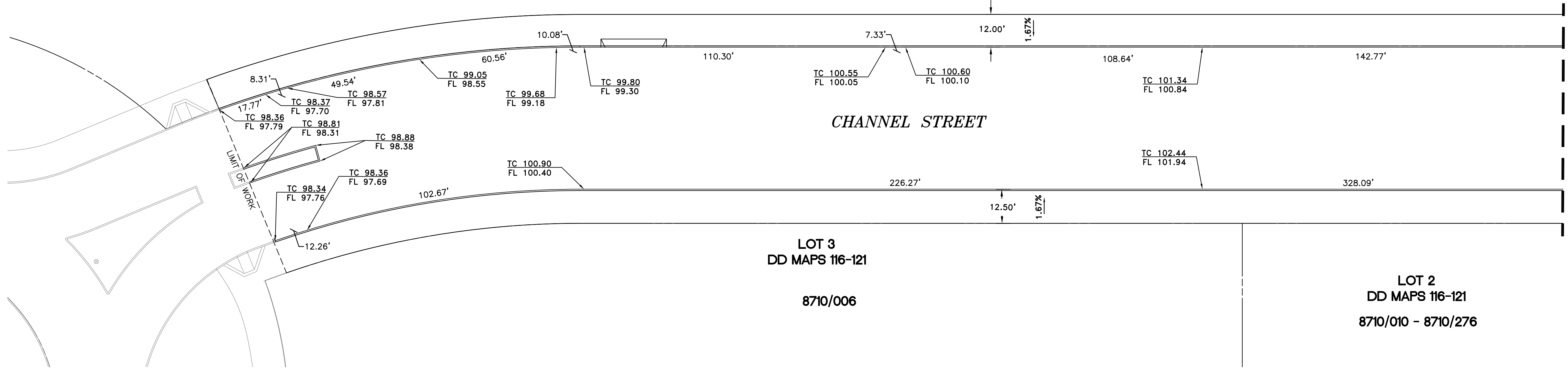


GRAPHIC SCALE



(IN FEET)
1 inch = 20 ft.

8710/002 P2
PORTION OF STATE TRUST PARCEL 2
DOCUMENT No. 99-G622160



MATCH LINE
SEE SHEET 2
CHANNEL STREET

LOT 3
DD MAPS 116-121
8710/006

LOT 2
DD MAPS 116-121
8710/010 - 8710/276

CITY AND COUNTY OF SAN FRANCISCO
DEPARTMENT OF PUBLIC WORKS
BUREAU OF STREET USE
AND MAPPING

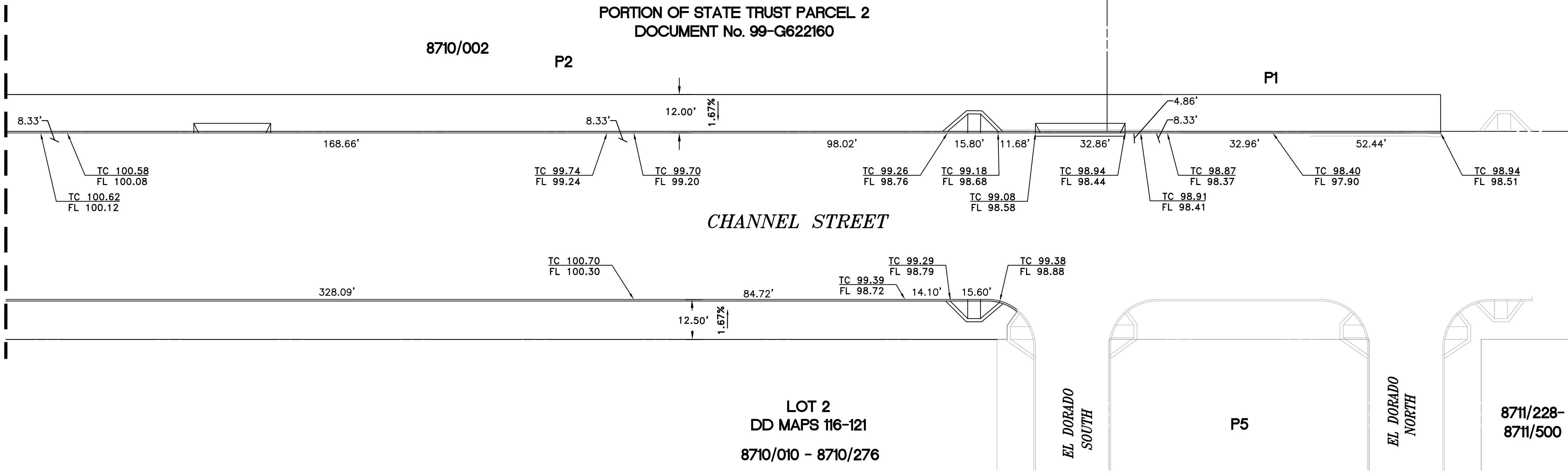
PROPOSED OFFICIAL GRADES AND
AND OFFICIAL SIDEWALKS ALONG
CHANNEL STREET, LONG BRIDGE STREET,
MISSION BAY BOULEVARD NORTH, AND
MISSION BAY BOULEVARD SOUTH

SCALE: 1"=20'

SHEET 1 OF 5 SHEETS

| | | | | | | | |
|-----|------|---------------------------------|----|-----------|-------|----------|--|
| | | DRAWN: | | APPROVED: | | FILE: | |
| NO. | DATE | DESCRIPTION TABLE OF CHANGES | BY | CHECKED: | DATE: | Q20-1111 | |

MATCHLINE
SEE SHEET 1
CHANNEL STREET



GRAPHIC SCALE



(IN FEET)
1 inch = 20 ft.

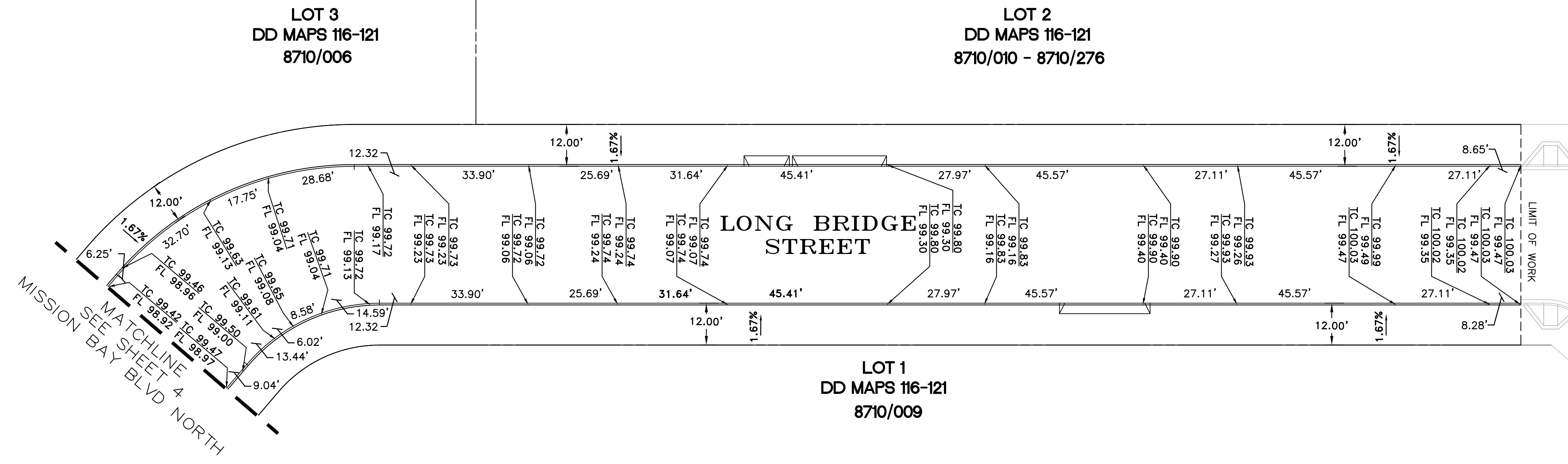
CITY AND COUNTY OF SAN FRANCISCO
DEPARTMENT OF PUBLIC WORKS
BUREAU OF STREET USE
AND MAPPING

PROPOSED OFFICIAL GRADES AND
AND OFFICIAL SIDEWALKS ALONG
CHANNEL STREET, LONG BRIDGE STREET,
MISSION BAY BOULEVARD NORTH, AND
MISSION BAY BOULEVARD SOUTH

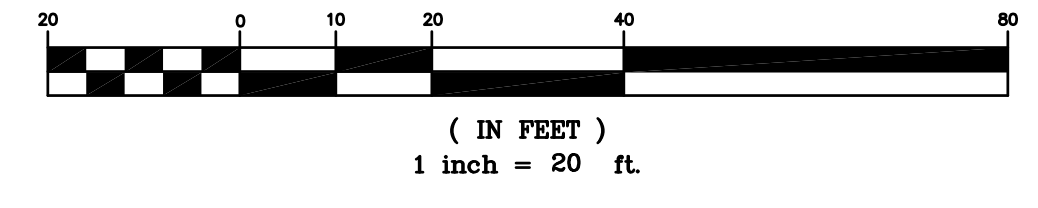
SCALE: 1"=20'

SHEET 2 OF 5 SHEETS

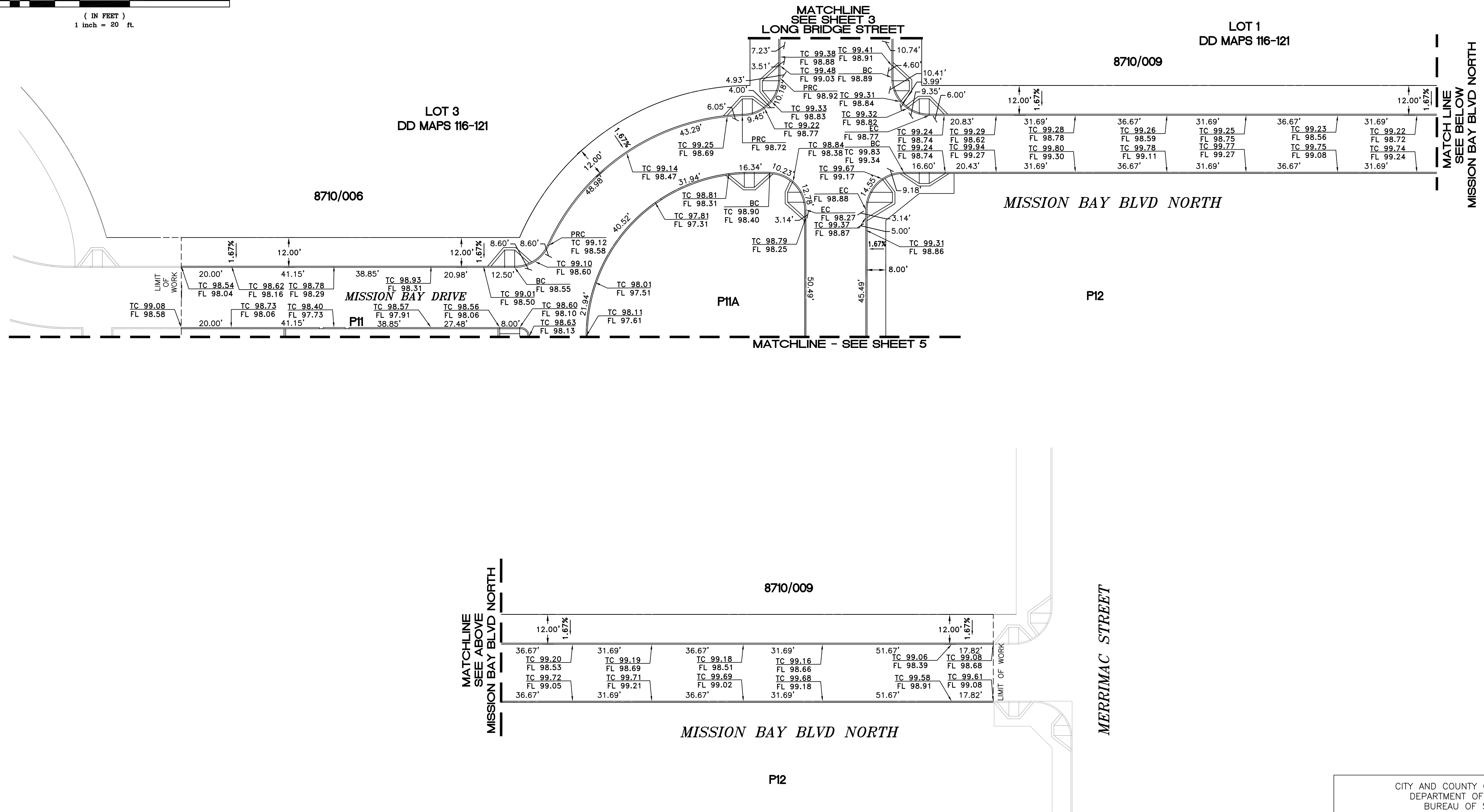
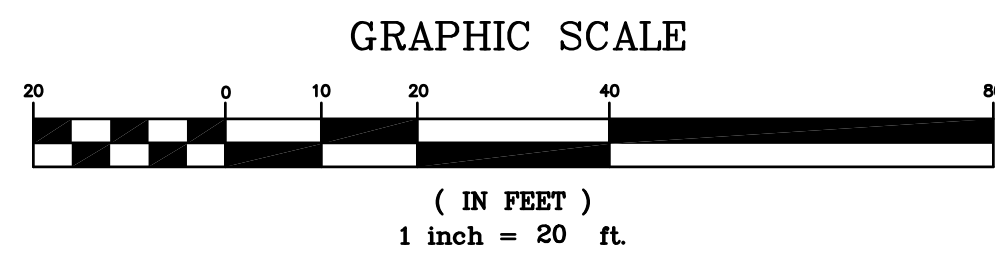
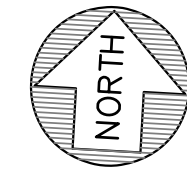
| | | | | | | | |
|-----|------|---------------------------------|----|-----------|-------|----------|--|
| | | DRAWN: | | APPROVED: | | FILE: | |
| NO. | DATE | DESCRIPTION TABLE OF CHANGES | BY | CHECKED: | DATE: | Q20-1111 | |



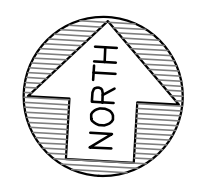
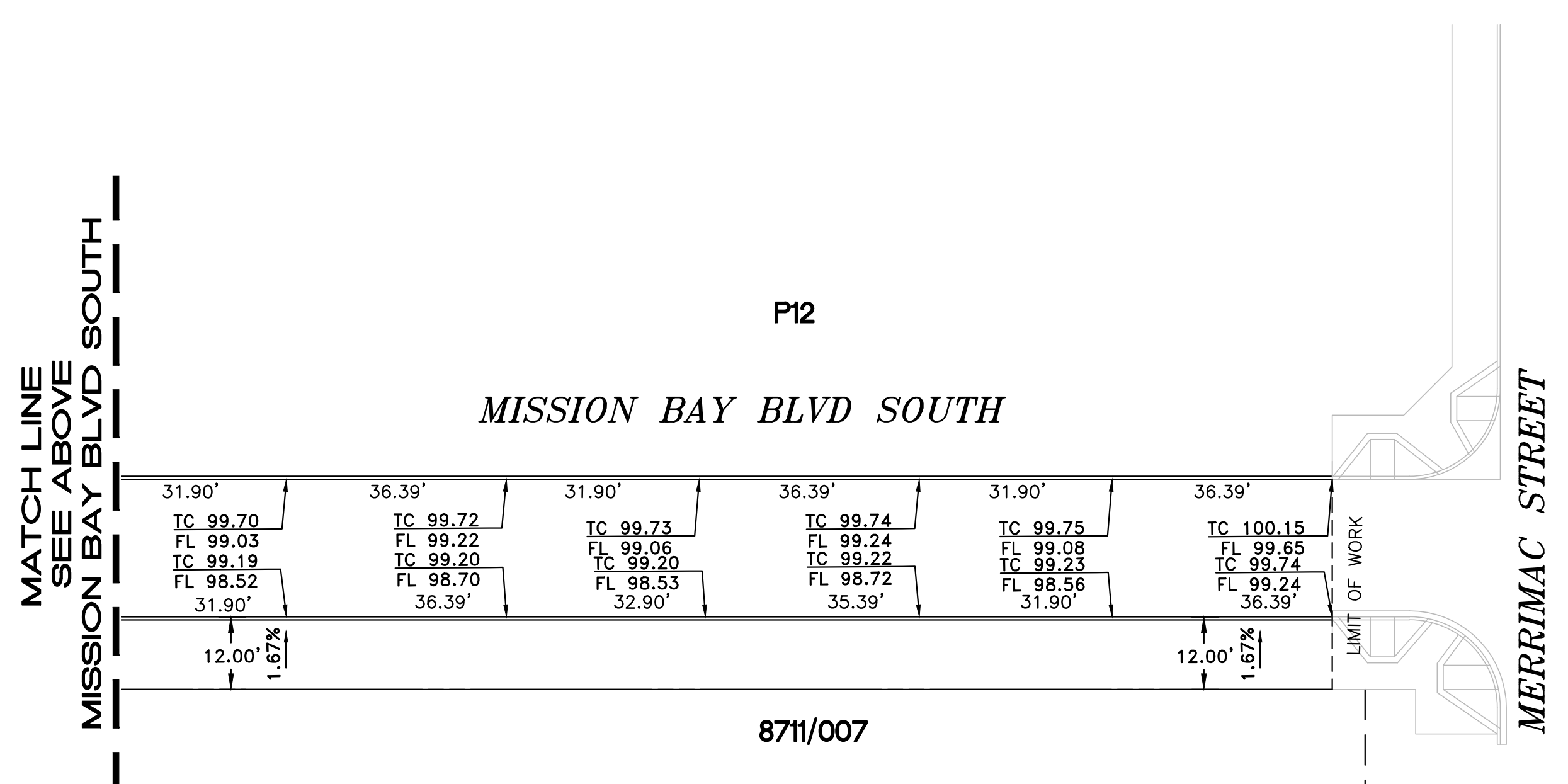
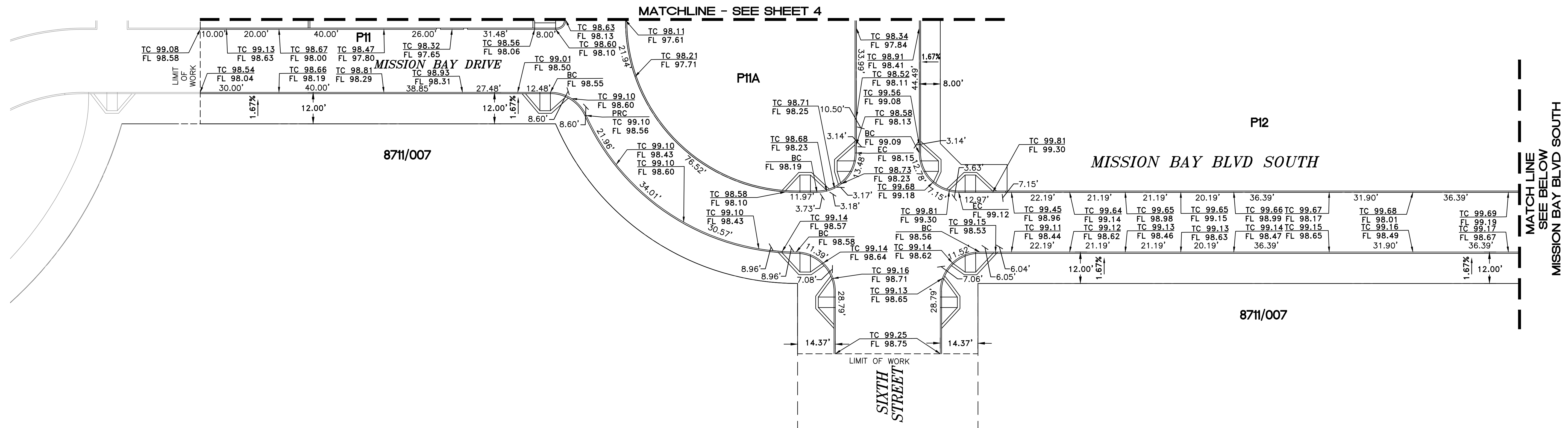
GRAPHIC SCALE



| | | |
|--|--------|---------------------|
| CITY AND COUNTY OF SAN FRANCISCO DEPARTMENT OF PUBLIC WORKS BUREAU OF STREET USE AND MAPPING | | |
| PROPOSED OFFICIAL GRADES AND AND OFFICIAL SIDEWALKS ALONG CHANNEL STREET, LONG BRIDGE STREET, MISSION BAY BOULEVARD NORTH, AND MISSION BAY BOULEVARD SOUTH | | |
| SCALE: 1"=20' | | SHEET 3 OF 5 SHEETS |
| | DRAWN: | APPROVED: |
| NO. | DATE | DATE: |
| DESCRIPTION TABLE OF CHANGES | | BY CHECKED: |
| | | FILE: Q20-1111 |



| | | | |
|--|------|---------------------------------|-------------------|
| CITY AND COUNTY OF SAN FRANCISCO DEPARTMENT OF PUBLIC WORKS BUREAU OF STREET USE AND MAPPING | | | |
| PROPOSED OFFICIAL GRADES AND AND OFFICIAL SIDEWALKS ALONG CHANNEL STREET, LONG BRIDGE STREET, MISSION BAY BOULEVARD NORTH, AND MISSION BAY BOULEVARD SOUTH | | | |
| SCALE: 1"=20' | | SHEET 4 OF 5 SHEETS | |
| NO. | DATE | DESCRIPTION TABLE OF CHANGES | BY |
| | | | |
| DRAWN: | | APPROVED: | |
| CHECKED: | | DATE: | |
| | | | FILE: Q20-1111 |



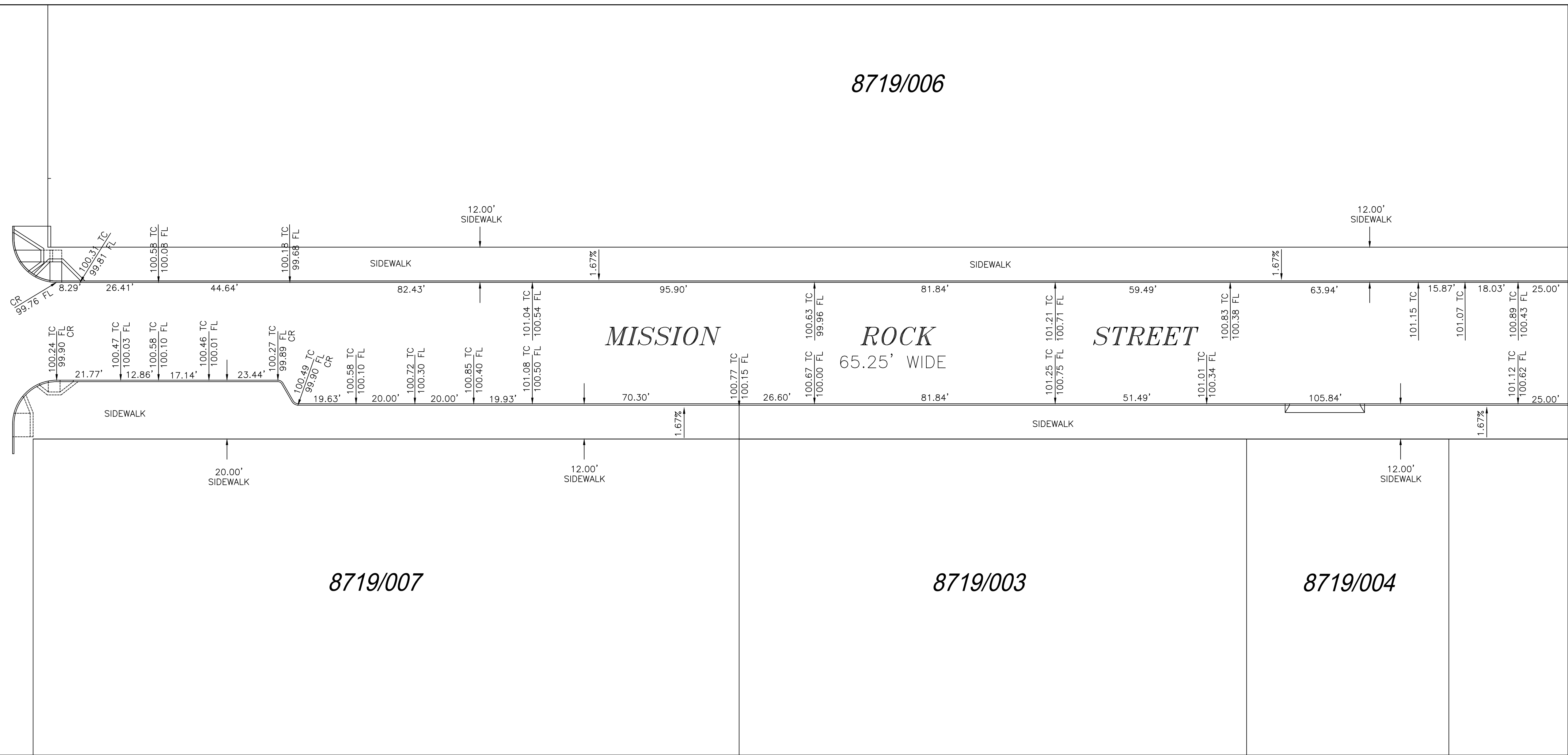
GRAPHIC SCALE



(IN FEET)
1 inch = 20 ft.

| | | | |
|--|------|---------------------------------|-------------------|
| CITY AND COUNTY OF SAN FRANCISCO DEPARTMENT OF PUBLIC WORKS BUREAU OF STREET USE AND MAPPING | | | |
| PROPOSED OFFICIAL GRADES AND AND OFFICIAL SIDEWALKS ALONG CHANNEL STREET, LONG BRIDGE STREET, MISSION BAY BOULEVARD NORTH, AND MISSION BAY BOULEVARD SOUTH | | | |
| SCALE: 1"=20' | | SHEET 5 OF 5 SHEETS | |
| NO. | DATE | DESCRIPTION TABLE OF CHANGES | BY |
| | | | |
| DRAWN: | | APPROVED: | |
| CHECKED: | | DATE: | |
| | | | FILE: Q20-1111 |

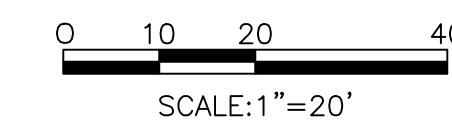
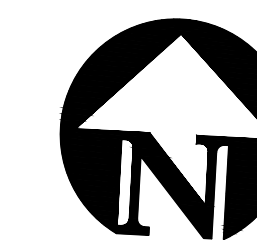
THIRD STREET
WIDTH VARIES



SEE SHEET 2

LEGEND

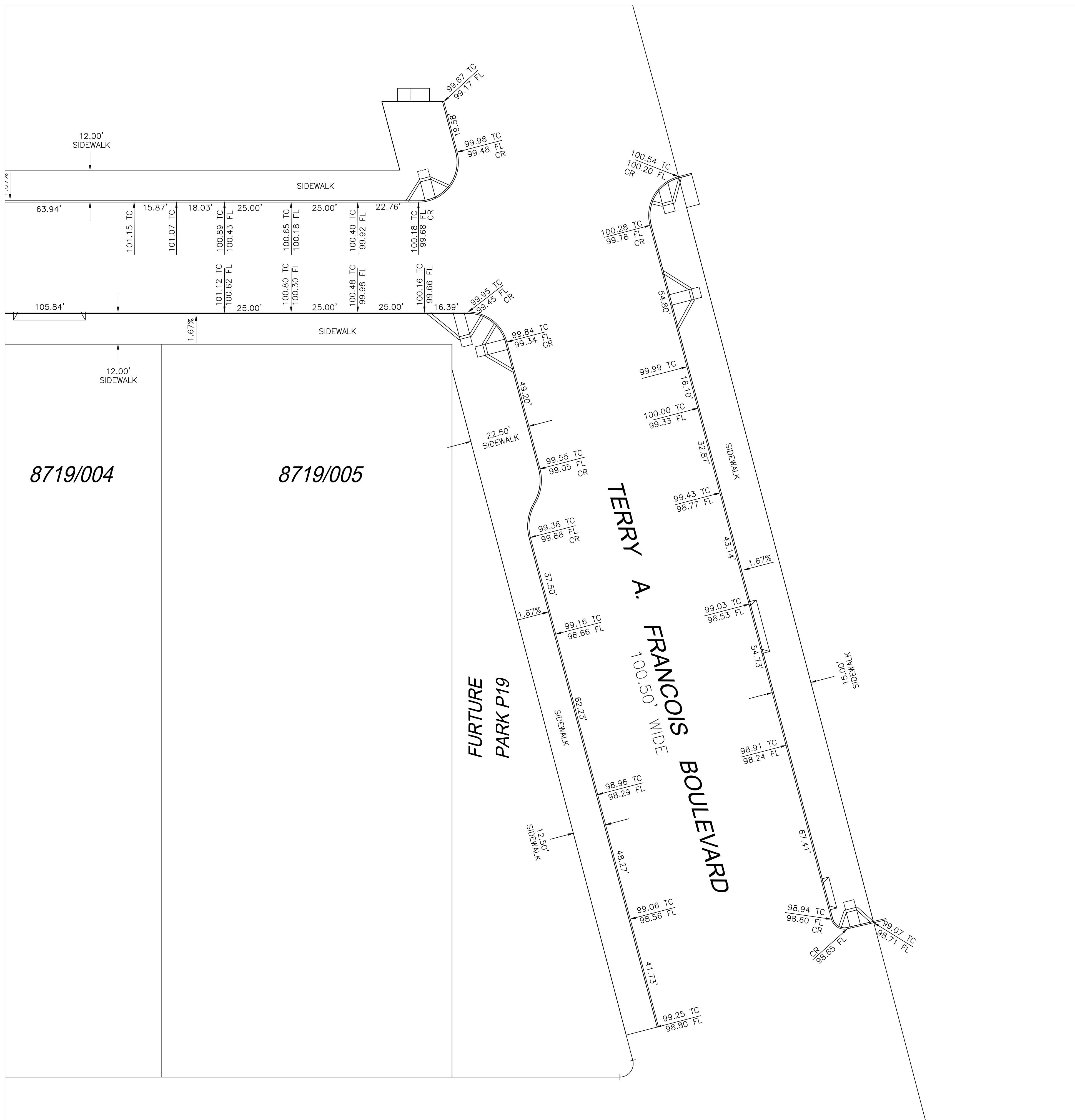
TC TOP OF CURB
FL FLOWLINE
CR CURB RETURN



| | |
|--|---------------------|
| CITY AND COUNTY OF SAN FRANCISCO DEPARTMENT OF PUBLIC WORKS BUREAU OF STREET USE AND MAPPING | |
| PROPOSED OFFICIAL GRADES AND OFFICIAL SIDEWALKS ALONG MISSION ROCK STREET AND TERRY FRANCOIS BOULEVARD | |
| SCALE: 1"=20' | SHEET 1 OF 2 SHEETS |
| DRAWN: BY | APPROVED: DATE: |
| NO. DATE DESCRIPTION TABLE OF CHANGES | FILE: Q-20-1113 |

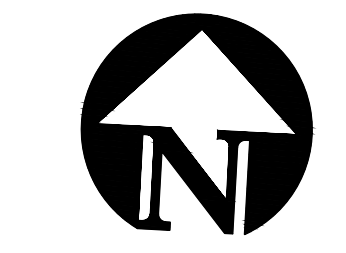
| | | | | |
|-----|------|---------------------------------|----|----------|
| NO. | DATE | DESCRIPTION TABLE OF CHANGES | BY | CHECKED: |
|-----|------|---------------------------------|----|----------|

SEE SHEET 1



LEGEND

- TC TOP OF CURB
- FL FLOWLINE
- CR CURB RETURN



CITY AND COUNTY OF SAN FRANCISCO
 DEPARTMENT OF PUBLIC WORKS
 BUREAU OF STREET USE
 AND MAPPING

PROPOSED OFFICIAL GRADES AND
 OFFICIAL SIDEWALKS ALONG MISSION ROCK STREET
 AND TERRY FRANCOIS BOULEVARD

SCALE: 1"=20'

SHEET 2 OF 2 SHEETS

| NO. | DATE | DESCRIPTION TABLE OF CHANGES | BY | CHECKED: |
|-----|------|---------------------------------|----|----------|
| | | | | |

DRAWN:
 CHECKED:

APPROVED:
 DATE:

FILE:
 Q-20-1113

THIRD STREET

SIXTEENTH STREET

MARIPOSA STREET

UCSF CHILDREN'S HOSPITAL

AB 3992

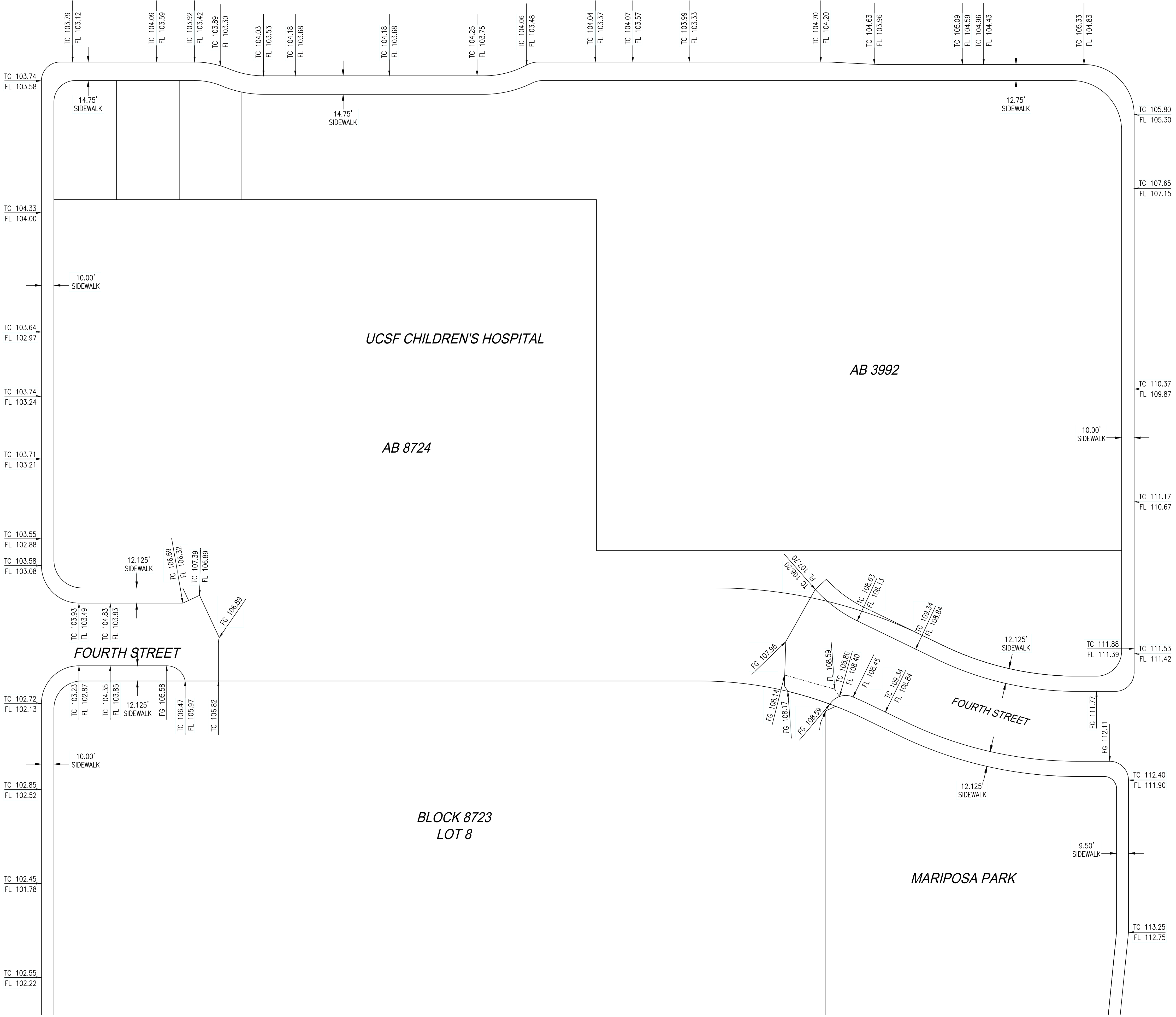
AB 8724

FOURTH STREET

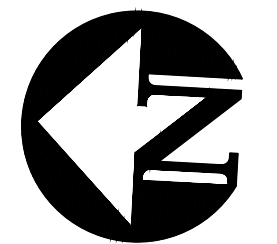
FOURTH STREET

BLOCK 8723
LOT 8

MARIPOSA PARK



SEE SHEET 1



0 20 40 80
SCALE: 1"=40'

CITY AND COUNTY OF SAN FRANCISCO
DEPARTMENT OF PUBLIC WORKS
BUREAU OF STREET USE AND MAPPING

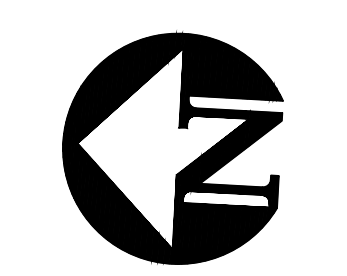
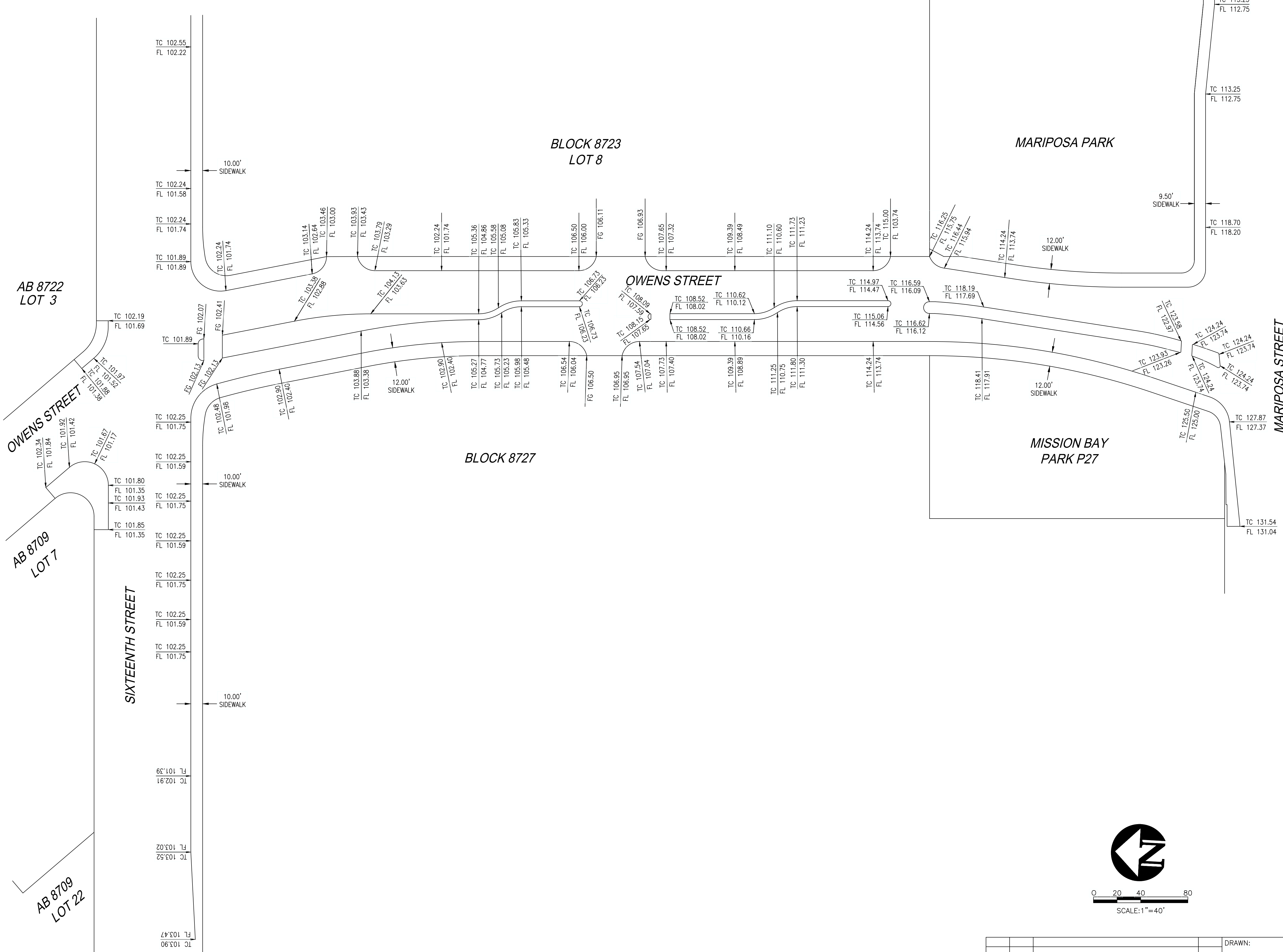
MAP
SHOWING THE OFFICIAL SIDEWALK WIDTHS
CURB ELEVATIONS ALONG THIRD STREET,
FOURTH STREET, SIXTEENTH STREET,
OWENS STREET AND MARIPOSA STREET

SCALE: 1"=40'

SHEET 2 OF 2 SHEETS

| | | | | | | | | | | | | | |
|-----|--|------|--|---------------------------------|--|----|--|--------------------|--|--------------------|--|--------------------|--|
| NO. | | DATE | | DESCRIPTION TABLE OF CHANGES | | BY | | DRAWN: CHECKED: | | APPROVED: DATE: | | FILE: Q-20-1112 | |
|-----|--|------|--|---------------------------------|--|----|--|--------------------|--|--------------------|--|--------------------|--|

SEE SHEET 2



0 20 40 80
SCALE: 1"=40'

CITY AND COUNTY OF SAN FRANCISCO
DEPARTMENT OF PUBLIC WORKS
BUREAU OF STREET USE AND MAPPING

MAP
SHOWING THE OFFICIAL SIDEWALK WIDTHS
CURB ELEVATIONS ALONG THIRD STREET,
FOURTH STREET, SIXTEENTH STREET,
OWENS STREET AND MARIPOSA STREET

SCALE: 1"=40' SHEET 1 OF 2 SHEETS

| | | | | | |
|--------|------|---------------------------------|----------|-----------|--|
| DRAWN: | | APPROVED: | | FILE: | |
| BY | | DATE: | | Q-20-1112 | |
| NO. | DATE | DESCRIPTION TABLE OF CHANGES | CHECKED: | | |

THIRD STREET

SIXTEENTH STREET

MARIPOSA STREET

UCSF CHILDREN'S HOSPITAL

AB 3992

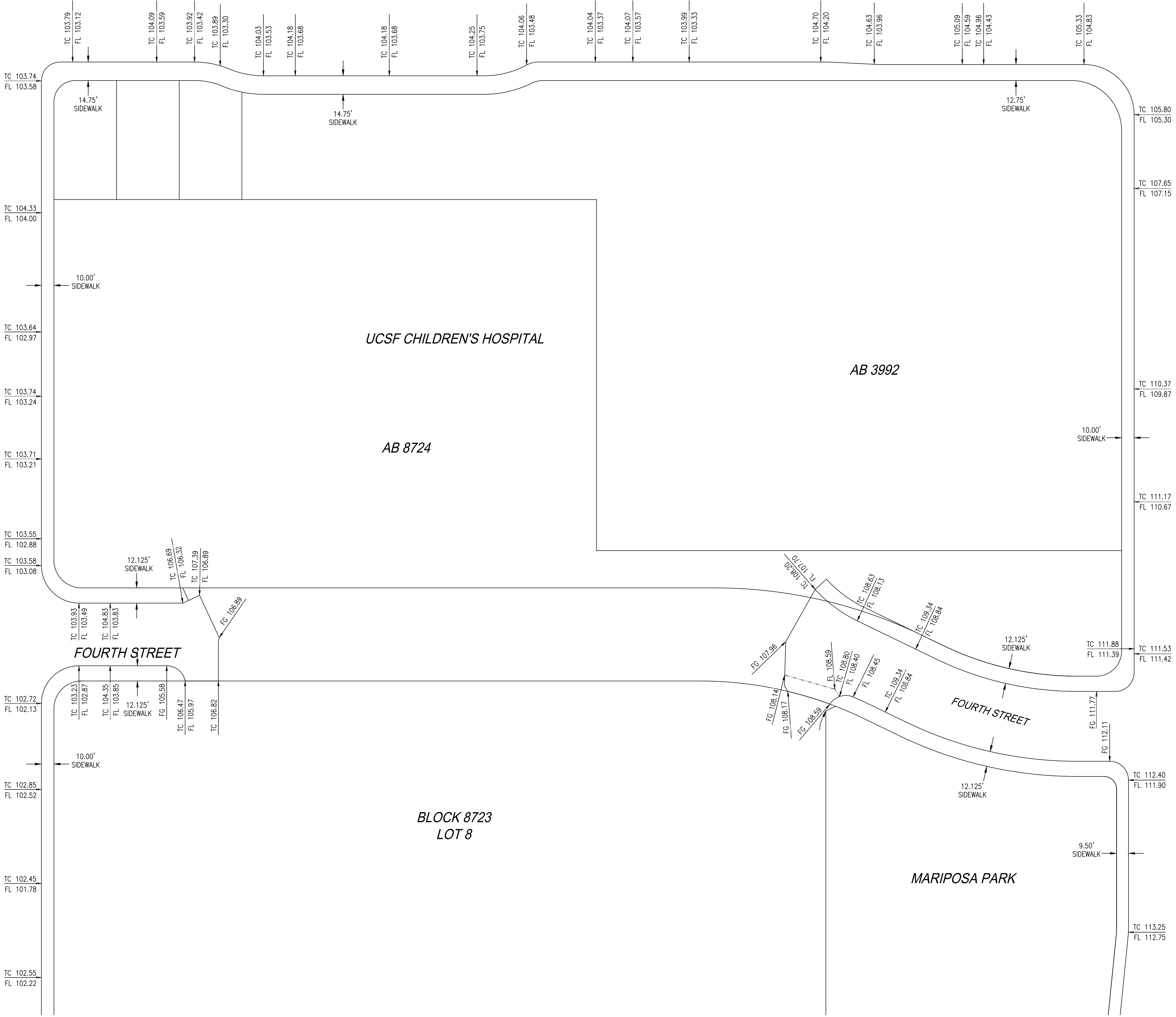
AB 8724

FOURTH STREET

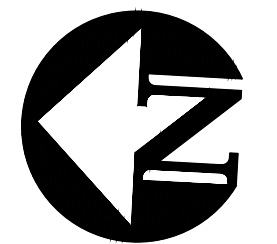
FOURTH STREET

BLOCK 8723
LOT 8

MARIPOSA PARK



SEE SHEET 1



0 20 40 80
SCALE: 1"=40'

CITY AND COUNTY OF SAN FRANCISCO
DEPARTMENT OF PUBLIC WORKS
BUREAU OF STREET USE AND MAPPING

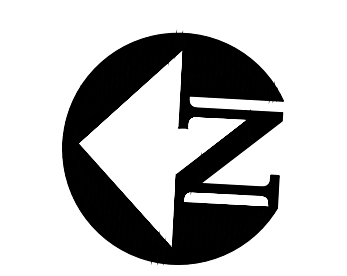
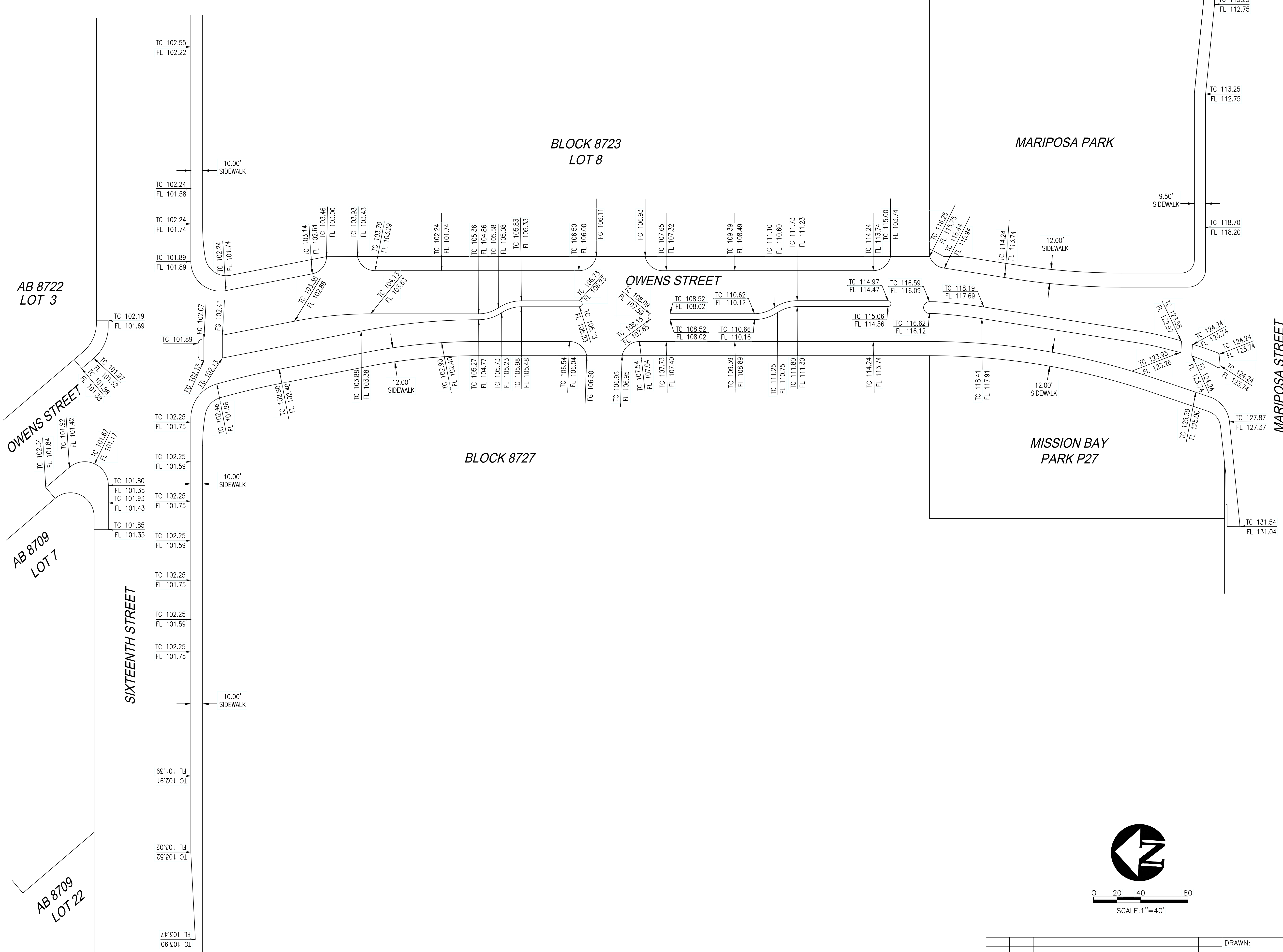
MAP
SHOWING THE OFFICIAL SIDEWALK WIDTHS
CURB ELEVATIONS ALONG THIRD STREET,
FOURTH STREET, SIXTEENTH STREET,
OWENS STREET AND MARIPOSA STREET

SCALE: 1"=40'

SHEET 2 OF 2 SHEETS

| | | | | | | | | | | | | | |
|-----|--|------|--|---------------------------------|--|----|--|--------------------|--|--------------------|--|--------------------|--|
| NO. | | DATE | | DESCRIPTION TABLE OF CHANGES | | BY | | DRAWN: CHECKED: | | APPROVED: DATE: | | FILE: Q-20-1112 | |
|-----|--|------|--|---------------------------------|--|----|--|--------------------|--|--------------------|--|--------------------|--|

SEE SHEET 2



0 20 40 80
SCALE: 1"=40'

CITY AND COUNTY OF SAN FRANCISCO
DEPARTMENT OF PUBLIC WORKS
BUREAU OF STREET USE AND MAPPING

MAP
SHOWING THE OFFICIAL SIDEWALK WIDTHS
CURB ELEVATIONS ALONG THIRD STREET,
FOURTH STREET, SIXTEENTH STREET,
OWENS STREET AND MARIPOSA STREET

SCALE: 1"=40' SHEET 1 OF 2 SHEETS

| | | | | | |
|--------|------|---------------------------------|--|-----------|--|
| DRAWN: | | APPROVED: | | FILE: | |
| BY | | CHECKED: | | DATE: | |
| NO. | DATE | DESCRIPTION TABLE OF CHANGES | | Q-20-1112 | |