

# MTC+ABAG PRIORITY CONSERVATION AREAS

PROPOSED UPDATES 2025



**San Francisco**  
**Planning**

**Jeremy Shaw**  
Principal Planner  
San Francisco Planning

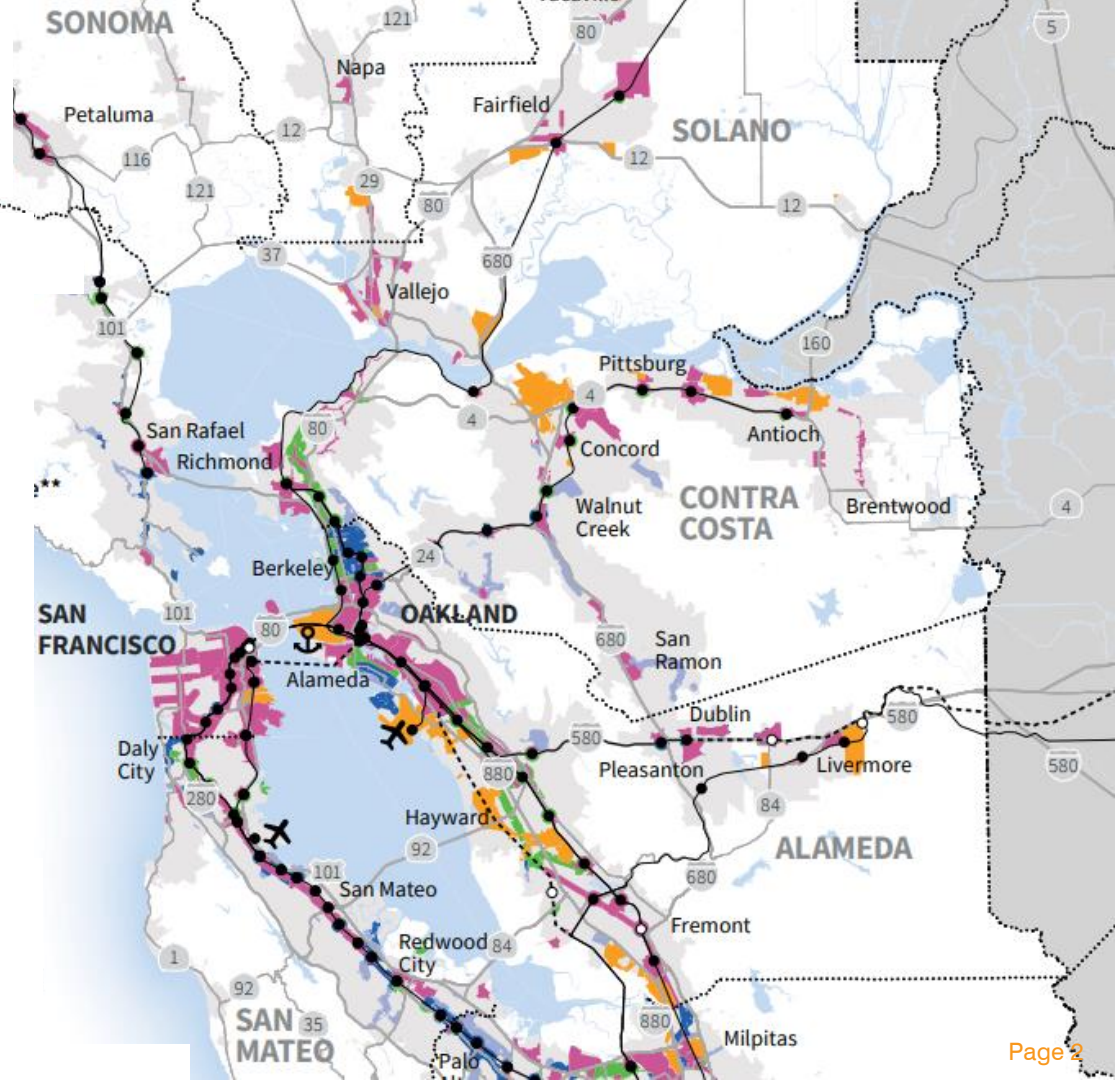
**David H. Garcia**  
Senior Planner  
San Francisco Planning

[www.sfplanning.org](http://www.sfplanning.org)



# PLAN BAY AREA FRAMEWORK

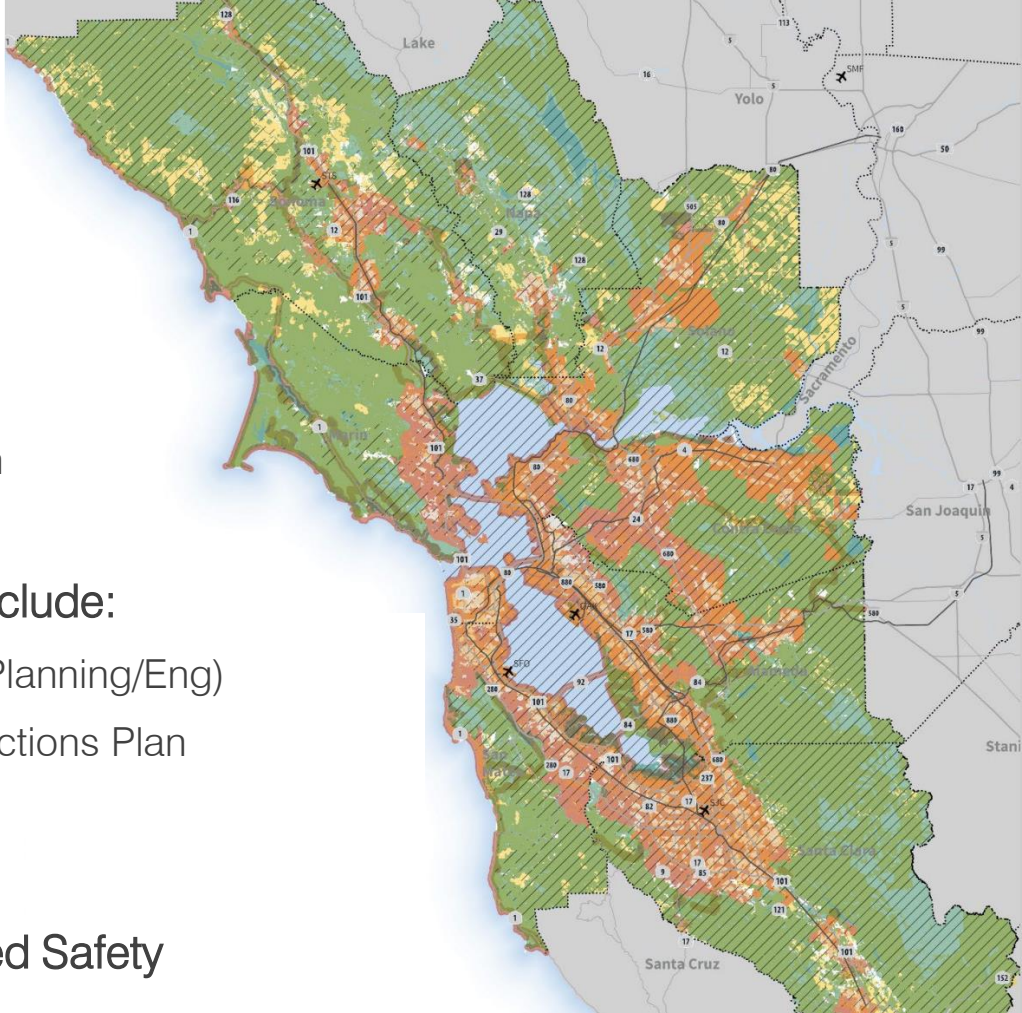
- Priority Conservation Areas (PCAs) started in 2007 along with Priority Development Areas (PDAs)
- Are nominated locally
- Eligible for PCA Grants
- Does not change land use or status, development controls





# PCA HISTORY IN SAN FRANCISCO

- 2018 – Grantees include:
  - Crane Cove Park Access
  - 900 Innes Park Planning
  - Twin Peaks Connectivity Conceptual Plan
- 2020 – PCAs Updated, SF Grantees include:
  - Yerba Buena Island Multi-Use Pathway (Planning/Eng)
  - McLaren Park and Neighborhood Connections Plan
  - Twin Peaks Trail Improvement
- 2025 – Grant for Visitacion Ave Bike/Ped Safety



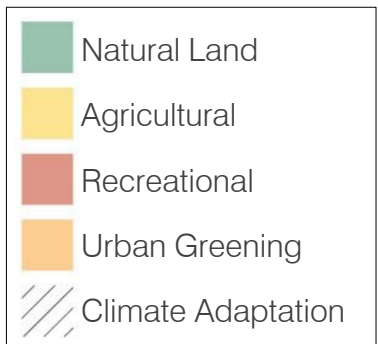
# PCA PROGRAM REFRESH (2024)

- Now more data-supported and structured
- Elevated equity, biodiversity & resilience
- Added *enhancement*, not only protection
- Added Climate adaptation as 5<sup>th</sup> type



# PCA TYPES & ELIGIBILITY

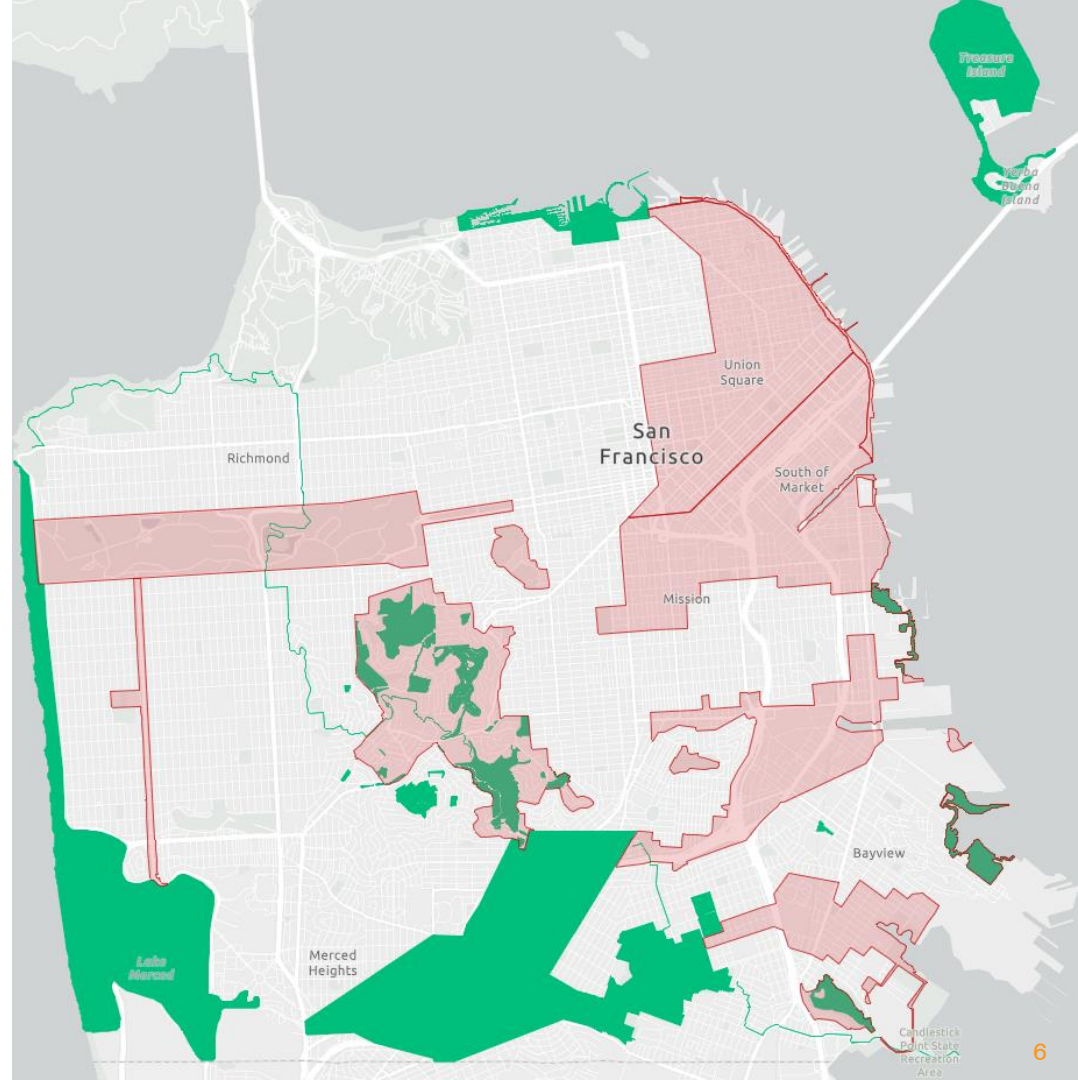
- 5 Types



- MTC/ABAG reviews nominations for eligibility
- PCA nominations are meant to prioritize limited funding

# PRIORITY CONSERVATION AREAS

- Existing
- Proposed







**THANK YOU**



**San Francisco  
Planning**

**Jeremy Shaw**  
Principal Planner  
San Francisco Planning  
[Jeremy.shaw@sfgov.org](mailto:Jeremy.shaw@sfgov.org)

**David H. Garcia**  
Senior Planner  
San Francisco Planning  
[David.h.Garcia@sfgov.org](mailto:David.h.Garcia@sfgov.org)

[www.sfplanning.org](http://www.sfplanning.org)