

**From:** [Ramona Rideout](#)  
**To:** [Board of Supervisors \(BOS\)](#); [PrestonStaff \(BOS\)](#)  
**Subject:** Comments re Webster SAFEWAY Closure (Objection)  
**Date:** Tuesday, January 23, 2024 12:50:22 PM  
**Attachments:** [Safeway Closing 3.2023 Sunny Commentsdocx.docx](#)

---

This message is from outside the City email system. Do not open links or attachments from untrusted sources.

To Whom It May Concern;

Attached please find the comments of my neighbor regarding the pending closure of the Safeway on Webster. She's a terrific, clear and concise writer, so I hope someone will read them at today's meeting.

Thank you,  
Ramona Rideout

*"An ounce of data is worth a thousand pounds of opinion."*

## Safeway Closing

Susan Roos  
66 Cleary Court #1301

I join with my neighbors in urging the San Francisco Board of Supervisors to prevent the closure of the Webster Safeway.

If the Webster Safeway store closes, it will have a negative impact on the Western Addition neighborhood and on thousands of residents of this area.

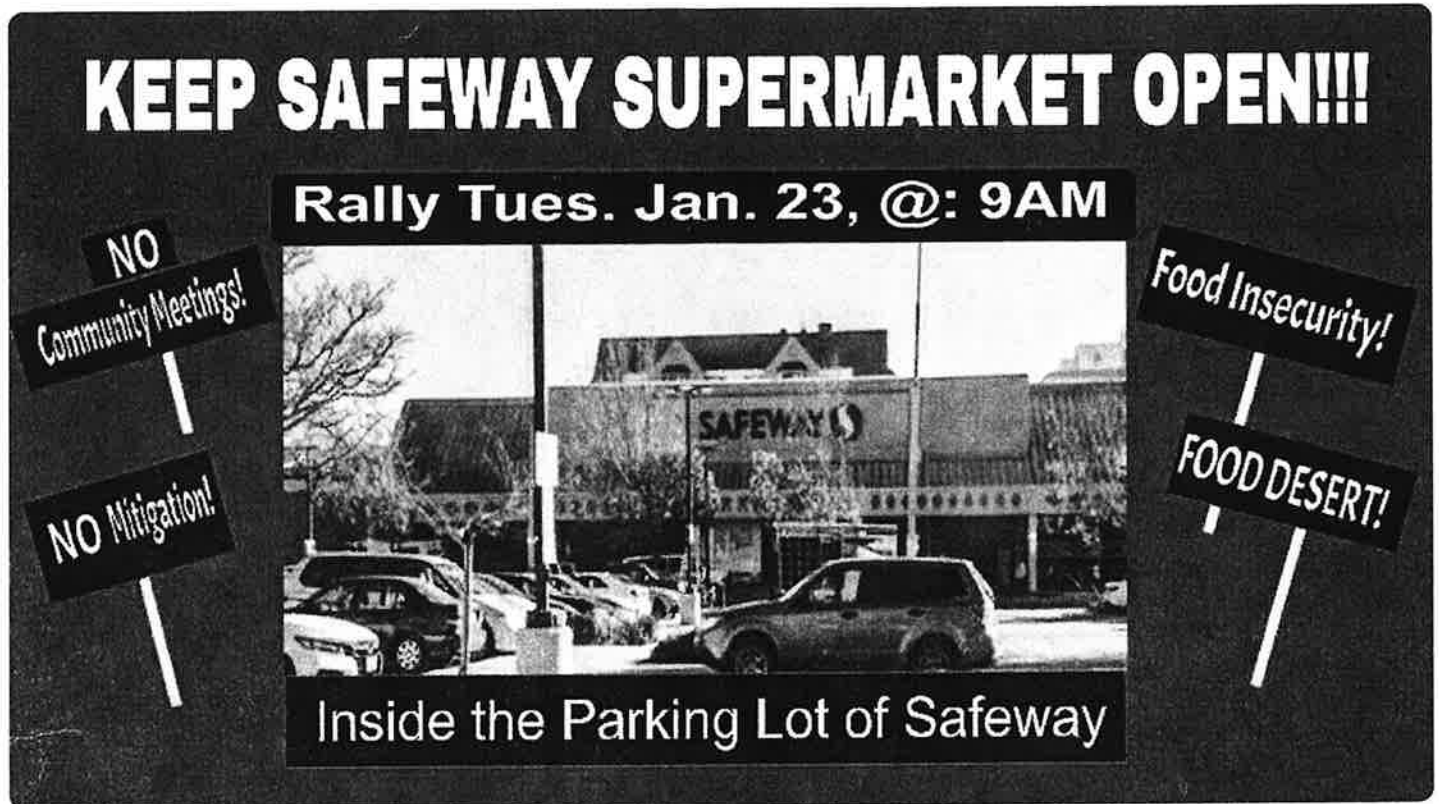
Many people, perhaps most, who are served by Safeway cannot afford to shop at Whole Foods or Trader Joe's. Many cannot drive to stores outside the neighborhood.

Safeway is a full-service grocery store with departments such as Organic Produce, Butcher, Bakery, and Pharmacy. Safeway carries a range of product choices, from generic to brand names to gourmet. So it serves customers from a wide range of economic levels.

Safeway is open early for customers who have jobs and other commitments during the day. It serves a diverse population of residents.

Safeway is the anchor for the other shops in the Webster Center. If Safeway closes, it will affect the other businesses and probably cause a number of other closures, leaving vacant stores and the problems that situation can bring.

Again, I urge the San Francisco Board of Supervisors to prevent the closure of the Webster Safeway.



# KEEP SAFEWAY SUPERMARKET AT 1335 WEBSTER STREET IN SAN FRANCISCO OPEN!!!

Started  
Petition to


January 8, 2024  
Align Real Estate and [2 others](#)

**295**

Signatures

**500**

Next Goal

 Support now

Sign this petition

## Why this petition matters





Started by Daniel Landry.

**CALL THE SAN FRANCISCO BOARD OF SUPERVISORS TO SUPPORT THE FOLLOWING RESOLUTION ON TUESDAY, JANUARY 23, 2024:**

**By Tel.:** (415) 554-5184 **or By E-mail:** Board.of.Supervisors@sfgov.org

RESOLUTION FILE NO. 240027:

**[Urging Safeway to Reserve Plan to Close Safeway Store in the Fillmore in March 2024] - Sponsored by: Supervisors Preston, Walton, Safai, Peskin, Chan**

A resolution urging Safeway incorporated to Reserve Plan to close the Safeway on 1335 Webster Street in March 2024:

**WHEREAS**, On January 4, 2024, Safeway Incorporated announced that the Safeway at 1335 Webster Street in San Francisco's Fillmore district would shutter "in or around early March" and that the 3.68-acre property would be sold to Align Real Estate; and

**WHEREAS**, The announcement of an abrupt closure of this grocery store has been met with outrage, fear, and questions from community members who rely on this store; and

**WHEREAS**, The subject site was part of the Redevelopment Area where Black and Japanese families were forced to move from the area, homes were demolished, businesses closed, and people displaced, as part of the highly damaging "urban renewal" redevelopment program in the Fillmore; and

**WHEREAS**, A defining characteristic of the redevelopment era was decisions forced on communities without their input, facilitated by claims that the communities were "blighted", and with promises that developers and real estate speculation which displaced thousands would somehow benefit communities, and

**WHEREAS**, Prior to the Safeway being built in 1983, the historic Booker T. Washington Hotel was there until it was torn down in 1968 without community support, just two years after the San Francisco Redevelopment Agency purchased the hotel with plans to use it as a temporary relocation center for displaced residents; and

**WHEREAS**, Safeway consists of a grocery store, pharmacy, and bank, and these services at this

 Support now

Sign this petition



---

**WHEREAS**, The Safeway on Webster Street is the only full-service grocery store in the Fillmore, and residents of the neighborhood will have no nearby grocery options, potentially for years, and

**WHEREAS**, The Safeway is located on robust transit lines and many San Franciscans in surrounding neighborhoods travel to this grocery store by bus, car, bike, or on foot, to get basic necessities,

**WHEREAS**, Safeway has not held a single community meeting with Fillmore neighborhood residents regarding closure plans, mitigations, or planning for alternative grocery services in the event of closure;

**WHEREAS**, The pending closure of the Safeway will create food insecurity and a food desert in the heart of the Western Addition; and

**WHEREAS**, Food insecurity increases the risk of multiple chronic conditions, including diabetes, heart disease, and hypertension; and exacerbates existing physical and mental health conditions, can impair child development; and

**WHEREAS**, Construction on any new development at 1335 Webster Street would not be for a significant period of time, raising questions about why the grocery store should not continue to operate for the benefit of the community until construction begins.

**WHEREAS**, Safeway has stated that they have no immediate plans to be a part of the future development, and the developer, Align Real Estate, has no public commitment to a future grocery store on this site; and

**RESOLVED**, The Board of Supervisors urges Safeway Incorporated to reverse their plans to close the Safeway on 1335 Webster Street in March, 2024 and to work with the Western Addition community, city leaders, and Align Real Estate (or any other buyer to keep Safeway open until development begins, and to explore the inclusion of a grocery store in any future development.

**FURTHER RESOLVED**, The Board of Supervisors urges Align Real Estate (or any other buyer) on this site, to work with the City and County of San Francisco and the Western Addition community to keep Safeway open until development begins, and to explore the inclusion of a





limited to the Office of Economic Workforce Development, the Mayor's Office of Housing and Community Development, the Planning Department, the Human Rights Commission, the Department of Health, the Human Services Agency, and Department of Disability and Aging Services to work with Safeway, Align Real Estate (or any other buyer), and the community to ensure that the grocery store does not abruptly close, and to explore community benefits including a new grocery store as part of any development as this site in the heart of the Fillmore; and

**FURTHER RESOLVED**, That the Board of Supervisors hereby directs the clerk of the Board to send a copy of this Resolution to the Office of Economic Development, the Mayor's Office of Housing and Community Development, the Planning Department, the Human Rights Commission, the Department of Public Health, the Human Services Agency, and the Department of Disability and Aging Services, Safeway Northern California Headquarters, and Align Real Estate.


**WHEREAS**, Sign the petition to support our efforts to appeal to Safeway to **STOP or DELAY** the CLOSURE of the SAFEWAY SUPERMARKET at 1335 Webster Street in San Francisco's Fillmore Western Addition District 5.



'Moving all the Blacks out!': SF community outraged over plan to close Wester...



This video below summarizes why communities in America are becoming grocery food deserts:

 Support now



## Why Grocery Stores Are Avoiding Black Neighborhoods



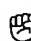
***The Board of Supervisors will be voting on a resolution next Tuesday, January 23, 2024, the meeting starts at 2:00 PM. This resolution will be seeking support from the BOSs to DEMAND Safeway MEET with the COMMUNITY and the City officials regarding this matter.***

You can also call or write Safeway headquarters to voice your opposition:

**Safeway Headquarters:** 5918 Stoneridge Mall Rd. Pleasanton, CA      TELEPHONE: 1.925-467-3000 / 1.877.723.3929 Vivek Sankaran President      & Chief Exec. Officer

**Align Real Estate:** 255 California Street San Francisco, CA 94111 1.415.872.9005

Thank you for your signature.

 Support now



Name	City	State	Postal Code	Country	Signed On
Daniel Lanc	San Francis	CA		US	1/8/2024
Sheila Robi	San Francis	CA	94112	US	1/9/2024
Shawn You	Concord	CA	94520	US	1/9/2024
Bayush Am	San Francis	CA	94112	US	1/9/2024
Shaka Jack	San Francis	CA	94102	US	1/9/2024
Shannon Br	San Francis	CA	94110	US	1/9/2024
halima pet	San Francis	CA		US	1/9/2024
Dewanda B	San Francis	CA	94115	US	1/9/2024
Johann Sco	San Leandr	CA	94577	US	1/9/2024
Alem Ambz	San Francis	CA	94125	US	1/9/2024
Leontine C	San Francis	CA	94123	US	1/9/2024
Damon Por	Oakland	CA	94610	US	1/9/2024
Monique H	San Francis	CA	94112	US	1/9/2024
senait abra	san francis	CA	94134	US	1/9/2024
Angaw Aml	Hampton	VA	23669	US	1/9/2024
hana negas	San Francis	CA	94112	US	1/9/2024
Barbara He	El Sobrante	CA	94803	US	1/9/2024
Lynnette W	San Francis	CA	94117	US	1/9/2024
Virginia Mz	San Francis	CA	94132	US	1/9/2024
tami Bryan	San Francis	CA	94115	US	1/9/2024
Zenebe Am	San Francis	CA	94115	US	1/9/2024
Silas Robin	Concord	CA	94520	US	1/9/2024
Kevin Fulle	San Jose	CA	95134	US	1/9/2024
Tyiesha Jor	Sacramenti	CA	94204	US	1/9/2024
Arlene Dru	San Francis	CA	94109	US	1/9/2024
Marquis M	San Francis	CA	94112	US	1/9/2024
jess valenti	san francis	CA	94115	US	1/9/2024
Rashida Sr	Sacramenti	CA	95821	US	1/9/2024
Maryanne	Cicero		60804	US	1/9/2024
Loren smitl	San Francis	CA	94112	US	1/9/2024
carvv c		5192	21720	US	1/9/2024
Tonya Jone	Magnolia	TX	77355	US	1/9/2024
Jon Inwooc	Brooklyn	NY	11226	US	1/9/2024
jill angelich	charlotte		28204	US	1/9/2024
Cleopatra T	Hayward	CA	94541	US	1/9/2024
Carla Holso	San Francis	CA	94115	US	1/9/2024
Juanella Fa	San Francis	CA	94114	US	1/9/2024
Lisa King	San Francis	CA	94134	US	1/9/2024
Jon Gausm	San Francis	CA	94117	US	1/9/2024
Lauryn Wo	San Francis	CA	94158	US	1/9/2024
Ericka Scot	San Francis	CA	94115	US	1/9/2024
Douglass H	San Francis	CA	94134	US	1/9/2024
martina rol	San Francis	CA	94115	US	1/9/2024
Gerald Will	Richmond	CA	94801	US	1/9/2024
Linda Silver	Fresno	CA	93727	US	1/9/2024
Billy Brook	Phoenix		85003	US	1/9/2024

Shannon L	Oakland	CA	94611	US	1/9/2024
Adriana Lig	San Francis	CA	94115	US	1/9/2024
Thorn Stov	Bethlehem		18918	US	1/9/2024
Monique E	Oakland	CA	94619	US	1/9/2024
Hugo Solis	Austin		78744	US	1/9/2024
Beverly Rol	San Leandr	CA	94578	US	1/9/2024
Derrius Mc	Plain City		43064	US	1/9/2024
Joshua Cur	Peterborough	PE7		US	1/9/2024
Alana Prezi	Swedesboro		8085	US	1/9/2024
KIMBERLY	San Francis	CA	94102	US	#####
Carneil Hicl	San Francis	CA	94115	US	#####
Lois A Jack	South San I	CA	94080	US	#####
Anthony B	San Francis	CA	94112	US	#####
Hugh Greg	San Francis	CA	94158	US	#####
Clara Youn	Oakland	CA	94609	US	#####
Althea Antr	San Francis	CA	94112	US	#####
LAUREN PII	San Francis	CA	94117	US	#####
Jameel Pat	San Francis	CA	94112	US	#####
Renee Cob	San Francis	CA	94110	US	#####
Sheila Mitr	Berkeley	CA	92105	US	#####
Gloria Berr	Daly City	CA	94015	US	#####
Cedrick Car	San Francis	CA	94102	US	#####
Aaron Farn	Warren		71671	US	#####
Larry Marti	San Francis	CA	94103	US	#####
LaTonia Gri	San Francis	CA	94115	US	#####
Brian Mitct	Oakland	CA	94610	US	#####
Katrina Day	Suffolk		23434	US	#####
Majeid Cra	San Francis	CA	94115	US	#####
Tonya SAH	San Leandr	CA	94577	US	#####
Mattie Sco	Oakland	CA	94606	US	#####
Amanda M	Summerville		29483	US	#####
Tomasita N	San Francis	CA	94122	US	#####
Sam Cleme	Greenville		29601	US	#####
Sammie J	San Francis	CA	94121	US	#####
Sonya Smit	San Francis	CA	94103	US	#####
Adam Kalul	Burleson	TX	76028	US	#####
Marcia Pet	San Francis	CA	94115	US	#####
Sadie Giddi	Gainesville		32601	US	#####
Quanie Har	San Francis	CA	94109	US	#####
Vanessa Ja	San Francis	CA	94132	US	#####
Dolores Pi	San Bruno	CA	94066	US	#####
Regina Aya	Antioch	CA	94531	US	#####
Nautia Ellis	Charlotte		28207	US	#####
Elizabeth L	Tustin		92780	US	#####
Maritza M	Atlanta	GA	30301	US	#####
Erica Reed	Vallejo	CA	94591	US	#####
Shamim Hc	San Francis	CA	94109	US	#####



Sharmin Hc San Francis CA	94109 US	#####
Alicia Sand San Francis CA	94110 US	#####
Colleen Mt San Francis CA	94115 US	#####
Jennifer Ke Caliente	89008 US	#####
Daniel Burr Cypress	77433 US	#####
Kevin Zou Philadelphia	19120 US	#####
Christi Hod San Francis CA	94115 US	#####
Deborah Ci Sacramento	95823 US	#####
Shadow Se Houston	77018 US	#####
Helen Wolc San Francis CA	94115 US	#####
LAURA DIA Detroit	19808 US	#####
Almaz NB Oakland CA	94621 US	#####
Tirrell Muh Antioch CA	94513 US	#####
Adhanet Hc San Francis CA	94112 US	#####
Nigusse Ha Daly City CA	94015 US	#####
Annette M San Francis CA	94110 US	#####
Sertsu Y San Francis CA	94115 US	#####
Seret Dirar San Francis CA	94102 US	#####
Taddesse F Walnut Cre CA	94595 US	#####
Abeba Ged Toronto	M5A Canada	#####
Michael Ge Walnut Cre CA	94595 US	#####
Bana Dirar San Francis CA	94102 US	#####
Dr Beverly Griffin PhD	US	#####
Saleh Diab Independence	64057 US	#####
Semhar Ar Alexandria VA	22301 US	#####
Bob Gorrin San Francis CA	94131 US	#####
Richard Hyl San Francis CA	94115 US	#####
Senait Tecl San Francis CA	94102 US	#####
La Ronda S San Francis CA	94112 US	#####
Winta Zera Oakland CA	94605 US	#####
Maraki Kas San Francis CA	94142 US	#####
Yared Gebr Dublin CA	94568 US	#####
Samuel Gel Oakland CA	94610 US	#####
susan witk san francisc CA	94121 US	#####
Springer Hc San Francis CA	94117 US	#####
Patricia Ke San Francis CA	94115 US	#####
Ashley Mcl Sacramento CA	95833 US	#####
Madeline N Kennett Square	19348 US	#####
James Rice Acworth GA	30101 US	#####
Ann Lembe San Francis CA	94134 US	#####
Vanessa Fit San Bruno CA	94066 US	#####
Quincy coll San Francis CA	94115 US	#####
Amanuel H California CA	94102 US	#####
Will Purifo South San ICA	94080 US	#####
Debbie E Felton	19943 US	#####
Ruth Gebr SaFresno CA	94110 US	#####
Amanda Ba Parker	80134 US	#####

Damian Ne San Francis CA	94114 US	#####
Eli B San Carlos	94070 US	#####
Tyrone Ma Redwood C CA	94063 US	#####
Neeta Choi San Francis CA	94112 US	#####
Harvey Veli Gary	75663 US	#####
Aisha Math San Francis CA	94102 US	#####
Ashley mor Hayward CA	94541 US	#####
Samantha I San Francis CA	94123 US	#####
Christophe San Francis CA	94134 US	#####
Doom Slayr Los Angeles	90034 US	#####
Wendy Frig San Francis CA	94122 US	#####
Erika Rikhir Clermont	34711 US	#####
Martha Ket San Francis CA	94124 US	#####
Nancy Kellc Syosset	11791 US	#####
Rutha Dem San Francis CA	94124 US	#####
Sala M San Francis CA	94115 US	#####
Nadira Johi Antioch CA	94509 US	#####
Salimah Riv Oakland CA	94611 US	#####
Joseph Hov San Francis CA	94112 US	#####
Kelly Nieva San Francis CA	94117 US	#####
Yt Stunts San Francis CA	94115 US	#####
Miriam Na San Francis CA	94112 US	#####
Saba Mina San Francis CA	94117 US	#####
Atalya Harr San Francis CA	94117 US	#####
Destiney Pr San Francis CA	94132 US	#####
Attica Bow San Francis CA	94117 US	#####
Royanna Se San Francis CA	94102 US	#####
Yeshitla De San Francis CA	94102 US	#####
Ashley M San Francis CA	94118 US	#####
Mariah Ma Stockton CA	95206 US	#####
Mikayla Sh San Francis CA	94112 US	#####
Kyrelle Cag Daly City CA	94015 US	#####
Tamia Fua San Francis CA	94110 US	#####
Lyons Lam Oakland CA	94601 US	#####
China West San Francis CA	94124 US	#####
Malleah Sn San Francis CA	94132 US	#####
JOVAN THC Oakland CA	94603 US	#####
yolanda be Las Vegas NV	89101 US	#####
Skyy H San Francis CA	94102 US	#####
Rico Fields South San I CA	94080 US	#####
Ryan O'Ma Detroit	48228 US	#####
La'Jaya Smi San Francis CA	94115 US	#####
Jalen Joine San Francis CA	94134 US	#####
Destiny Nis San Francis CA	94134 US	#####
Andrew Floyd	US	#####
Kimberly A Antioch	94531 US	#####
bernardo N San Antonio	78214 US	#####

Lakeisha Le Santa Clara CA	95054 US	#####
Jahdeia Lov San Francis CA	94112 US	#####
Nisha Powe San Francis CA	94115 US	#####
Fatima Wil Concord CA	94520 US	#####
Keith Keith Antioch CA	94531 US	#####
Shannon W San Francis CA	94115 US	#####
Kelly Ander San Francis CA	94115 US	#####
Angela Will Concord CA	94520 US	#####
Mercedes t San Francis CA	94133 US	#####
Ray Washir San Francis CA	94142 US	#####
Alex Lopez Spring	77389 US	#####
kadayjha g San Francis CA	94103 US	#####
Manuel Mz San Francis CA	94115 US	#####
Jack MacDr Worcester	1609 US	#####
Samantha t San Francis CA	94112 US	#####
Gwendolyr Fontana CA	92335 US	#####
Renee Nich San Francis CA	94115 US	#####
Zenobia Sh Columbus	31904 US	#####
S W San Francis CA	94109 US	#####
Latoya Bari San Francis CA	94102 US	#####
cheyenne c Richmond CA	94805 US	#####
Toni Beffor South San I CA	94080 US	#####
Taylor McF San Francis CA	94115 US	#####
Alexandria San Francis CA	94123 US	#####
William He San Francis CA	94115 US	#####
Damien Mc Walnut Cre CA	94598 US	#####
Shack Love San Francis CA	94110 US	#####
Regina Har Memphis TN	38115 US	#####
Jola Brown Sacramento CA	95821 US	#####
Tory Sprag New York NY	10017 US	#####
Chari King Antioch CA	94509 US	#####
Yolanda Joi San Francis CA	94121 US	#####
Jacob Bosh Glenview IL	60025 US	#####
Danneice L Oakland CA	94601 US	#####
Shirley Parl San Francis CA	94132 US	#####
Renita Mas San Francis CA	94121 US	#####
luis Bustillc los angeles	90019 US	#####
Tyra Allen San Francis CA	94115 US	#####
Marquitta t Concord CA	94520 US	#####
Lastarr Rus South San I CA	94080 US	#####
Priscilla Ev Chattanooga	37406 US	#####
Shaun Micl Stafford	22554 US	#####
Aaliyah Ev San Francis CA	94142 US	#####
kaaron war San Francis CA	94124 US	#####
Sheryll McI San Jose CA	95126 US	#####
Aleina Cha Portland	97225 US	#####
Gwendolyr San Francis CA	94122 US	#####

Neely W.	US	#####
joe ward San Francis CA	94115 US	#####
Scott Simoi San Francis CA	94115 US	#####
Debra Bran Richmond	94806 US	#####
Teresa Jor Brentwood CA	94513 US	#####
Henry Jone Lewisville	75067 US	#####
Ella Mills Shavano Park	78231 US	#####
Addison Dc Dallas	75287 US	#####
Crystal Vill: San Antonio	78207 US	#####
Gerardo Te Norcross	30071 US	#####
Myles Kent Murrieta	92562 US	#####
Daronda B: El Cerrito CA	94530 US	#####
Wadhah Sa Sterling Heights	48312 US	#####
Deleana M Bend	97703 US	#####
bennett foss	US	#####
Lilia Inigue: Worcester	1609 US	#####
Naomi Laz: Cambridge	21613 US	#####
Jordan Jon: Decatur	30033 US	#####
Kennetta B Chicago	60637 US	#####
Graham W: Nashville	37211 US	#####
Doris Ande Windsor	95492 US	#####
Andre Barn Anaheim CA	92804 US	#####
James Moc Washington DC	20009 US	#####
Timothy RC San Francis CA	94112 US	#####
Derek Reag San Francis CA	94112 US	#####
BJ Harris San Francis CA	94115 US	#####
Diane Love Las Vegas NV	89104 US	#####
Christine D San Francis CA	94112 US	#####
Hilary Marl San Francis CA	94115 US	#####
Aisha Guill: San Francis CA	94115 US	#####
giovanni ric Somerville	2143 US	#####
Felicia Pitre San Francis CA	94109 US	#####
MILTON BC Fremont CA	94536 US	#####
Rosie Ghos Kent	98030 US	#####
benjamin fi Ponchatoula	70454 US	#####
Maleiya W: Kennesaw	30144 US	#####
Samuel Mc Sacramento CA	94204 US	#####
HOLLY OW San Francis CA	94133 US	#####
Marc Tapia S.F. CA	94133 US	#####
S H San Francis CA	94033 US	#####
Sierra Mati San Francis CA	94117 US	#####
Adrian Will Oakland CA	94611 US	#####
Derick Sess Pittsburg CA	94565 US	#####
Cheryl Tho: Sunnyvale CA	94089 US	#####
Rebecca Hi San Francis CA	94110 US	#####
Stefan Golc San Francis CA	94110 US	#####
Emilio Vele Washington	20068 US	#####

Frank Castl San Francis CA	94115 US	#####
Connie Dav Salt Lake City	84106 US	#####
Leah Meas San Francisco	94109 US	#####
Lamar Yate San Francis CA	94115 US	#####
Keith Madc San Francis CA	94142 US	#####
JAWANA A San Francis CA	94102 US	#####
Gayle Hart San Francis CA	94112 US	#####
Brejea Colt Oakland CA	94621 US	#####
Marlowe A San Francis CA	94112 US	#####
AJ Jackson San Francis CA	94115 US	#####



**From:** [lgpetty](#)  
**To:** [Board of Supervisors \(BOS\)](#)  
**Subject:** Support Item 35 # 240047 Agenda 1-23-24 Fillmore Safeway Keep It Open & Work with Community  
**Date:** Monday, January 22, 2024 3:43:14 PM

---

This message is from outside the City email system. Do not open links or attachments from untrusted sources.

Dear Supervisors,

The Fillmore Safeway store is 2 blocks from my home in a low income LIHTC senior housing development with 172+ other seniors.

Most of us rely on Safeway for our groceries, especially low-priced staples and produce, banking at the Wells Fargo branch inside, and getting medicines from the Safeway pharmacy.

To lose all this would be a disastrous hardship for us and all of the Western Addition and Japantown residents.

This area has the largest concentration of seniors in the city. It will be cruel and inhumane to all of us for Safeway to abandon the area and turn it into a food desert. (For a long and unpredictable number of years.)

The suddenness of the Safeway decision and short timetable come as a shock, but not a surprise. It has been apparent for some years that Safeway's heart was not into serving this neighborhood. Safeway has not been adequately staffing the store for proper stocking, customer service, or for loss prevention, and they were not maintaining the parking lot.

These add up to longterm disrespect for customers and the neighborhood.

We have many questions, particularly about the affordability of the proposed "housing." We do not need market rate units with a handful of BMRs. At very least, we need 100 per cent affordable rental housing.

Also, this development proposal for 13 story buildings would further urbanize an already highly urbanized area. Note that still more high rises are in the works for nearby Plaza East and Freedom West.

Is the whole of the Western Addition to be an airless sunless landscape of massive apartment buildings so high-priced that essential workers, families, and seniors can't afford to live in the area and are pushed out?

Meanwhile the Safeway property construction process would be almost endless with no guarantee that anything would ever get built, especially anything that benefits the community.

What are we to do while we're waiting for a not-guaranteed, vague possibility of a (likely boutique) replacement supermarket? Are we to live and die on chips and soda from a corner store?

And what of the surrounding buildings housing small businesses and the dialysis facility? They have the same owner. What is their fate?

Please urge Safeway to stay until construction actually starts, and return afterward. Urge this giant corporation to meet and work with the community.

And yourselves ask hard questions of the owner/developers about the specifics and financing of their plans and urge their commitment to act responsibly toward, and with, all of us neighbors.

Thank you,  
Lorraine Petty  
Senior  
Fillmore resident  
Voter



**From:** [Harry Breaux](#)  
**To:** [Board of Supervisors \(BOS\)](#)  
**Subject:** Please save Safeway  
**Date:** Monday, January 22, 2024 4:17:07 PM

---

This message is from outside the City email system. Do not open links or attachments from untrusted sources.

Dear Supervisors,

I live at 1280 Laguna Street @ Ellis.

It's a 12-story, 130+ unit senior building and we will be devastated and have a difficult time replacing the function of the Fillmore/Webster Safeway. There is no reasonable replacement within walking distance.

Since most shoppers of this store do not use cars, the parking lot is large enough to be reduced and accommodate whatever building is needed for additional housing.

The area holds many low income housing units and all would be negatively impacted by this change.

The developers should not be allowed to destroy this Safeway and inflict such a difficulty on such a vulnerable population for such a short-sighted and financially motivated justification. They should be compelled with whatever ability you hold to provide plans for a project that also incorporates this store.

I feel it is your obligation to protect the citizens of this area over those of the interests of the economically propelled real estate concerns.

Thank you for your consideration of my comments.

Harry Breaux  
1280 Laguna Street Apt #7F  
San Francisco, CA 94115-4276  
(415) 819-7550  
hbreaux94114@icloud.com

**From:** [Judith Beck](#)  
**To:** [Board of Supervisors \(BOS\)](#); [Mayors Staff \(MYR\)](#); [Breed, Mayor London \(MYR\)](#); [st-francis-square@googlegroups.com](mailto:st-francis-square@googlegroups.com); [Board of Directors St. Francis Square](#)  
**Subject:** Safeway Closing  
**Date:** Monday, January 22, 2024 11:48:14 PM

---

This message is from outside the City email system. Do not open links or attachments from untrusted sources.

I am writing about the announced closing of the Safeway 2 blocks from my house, on Webster St. To be truthful, I rarely shop at Safeway, though I did get half my Covid shots there and I occasionally make a purchase. Even so, I am as riled up about the prospective closing, and the lack of process, as the rest of my neighbors. I recognize the role of this store in our neighborhood and the disrespect shown by its sudden, uncommunicative exit.

I'm sure Safeway is making a killing from selling its lot to a big real estate developer. It is making a killing in other ways, too, dealing a severe blow to the primary nexus of our community and jeopardizing the bodily and mental health of families and elderly or disabled residents who depend on it.

The O'Farrell/Fillmore intersection is the heart of our Fillmore neighborhood. Fillmore Plaza is used both for official programs that benefit our community and as a small enterprise social gathering spot. The Farmers' Market takes place across the street. Fillmore Center Plaza and the Fillmore and O'Farrell roadways themselves host festivals, observances, and celebrations. The small local shops flanking the Safeway lot and opening out onto Fillmore are a spillover draw from Safeway shopping trips. Safeway closing would adversely affect all of that, especially if the proposed housing would completely close off O'Farrell St. as a pedestrian corridor between Webster and Fillmore. (The curbs and cars of the parking lot already impede foot traffic and the lot entirely blocks vehicular through passage.)

Safeway is the sole full, basic grocery option for certain Fillmore residents – the not-rich, senior, disabled people trying against odds to continue living independently in this increasingly unaffordable place, the longtime working residents pressed for time by today's demands for overwork just to hang on. Mollie Stone, while near, is esoteric and unaffordable for most of us. Lucky is a long way off, and so is the Safeway on Church and Market. Trader Joe's, slated for 555 Fulton, is not a basic grocery store; it carries unusual items but lacks other, ordinary ones. Ending Safeway removes a convenient, walkable food source. For some of these neighbors, a trip to Safeway means even more: a little exercise, a respite from isolation at home, a chance to run into neighbors, and a ritual or routine that helps stave off dementia or depression. In these ways, Safeway, here for so long and centrally sited, acts as community glue.

We also worry about the housing that will come. 5 or 6 storeys, spread across the lot could work fine, interspersed with landscaping (think Friendship Court or St. Francis Square). As proposed, at 13 storeys, it is yet one more out-of-scale eyesore imposed on our much-abused, much-ignored district. We fear that it will be out of reach financially for current or displaced community members – one more hit of gentrification. We also picture it being both visually monolithic, ugly, and inhospitable, like many of the surrounding Redevelopment structures, and closed off to outside foot traffic. We are afraid that these buildings will not be good, open neighbors, that they will serve to shut down the vibrant hub that is the Fillmore/O'Farrell juncture, that their high prices will further inflate the neighborhood economy, driving out even more longtime residents in a place whose African American population has already been decimated from 60% to 10% by Redevelopment.

Our final complaint is about the manner in which this transfer is taking place – with zero consultation with or consideration for the community. One more time, in our Fillmore/Japantown/Western Addition home, as with Japanese camp imprisonment and all the phases of Redevelopment, decisions that massively affect us are being made for us, about us, without us, by those in higher places with money and power. We were not informed of the sale until it was a done deal. Even now, if you go into Safeway, you will find not a single word about the closing or the land sale. To pick up and leave, without a word of community engagement, is a slap in the face of our infamously beleaguered district of San Francisco.

Jane Jacobs was a brilliant and assiduous New York City citizen-expert on community public safety. She did her work in reaction against Redevelopment, a program which originated in her city and was being unleashed on neighborhoods there, including her own. Fillmore/Western Addition is the poster child for the ruthlessness and failure of Redevelopment, as imported from New York to San Francisco. We are still suffering the destructive aftermath of that trauma, so Jacobs' observations are highly pertinent here. She found that a crucial factor in neighborhood vitality and safety is 24-hour highly mixed use of a zone – mixed purposes, mixed ages, mixed kinds of people – exactly what the Webster/Fillmore/O'Farrell intersection provides. Shutting the all-night store will change that area from one of safety to one of danger, from whenever Safeway leaves till whenever the next occupant arrives, and if that occupant excludes 24-hour open access and use, ever thereafter.

## NEWS FLASH

I worked on this letter the better part of yesterday, and today we got the news that Safeway is postponing its departure till next January. That is a relief and I'm sure we have the public hue and cry, along with advocacy from the supervisors (especially District 5's Dean Preston), neighborhood organizers, and the mayor to thank. I am glad of this respite and only admonish that the parties involved – Safeway, Alliance, and our politicians – use it constructively to listen to our community and heed our concerns. Do not override us. We

know how to keep our home safe and thriving. We don't want to be trod underfoot again.

Sincerely,

Judy Beck

**From:** [Conny Ford VP](#)  
**To:** [Conny Ford](#)  
**Cc:** [Board of Supervisors \(BOS\)](#); [Mayors Staff \(MYR\)](#); [Breed, Mayor London \(MYR\)](#); [st-francis-google\\_group](#)  
**Subject:** Re: Safeway Closing  
**Date:** Tuesday, January 23, 2024 5:23:18 AM

---

This message is from outside the City email system. Do not open links or attachments from untrusted sources.

Thank you Judith - this is well written and right on point. Now, we, within our community and around our community, must continue to demand respect and our right to remain. Hopefully, we see each at the rally in front of Safeway this morning at 9. Conny

On Jan 22, 2024, at 11:47 PM, Judith Beck <[judy.beck@juno.com](mailto:judy.beck@juno.com)> wrote:

I am writing about the announced closing of the Safeway 2 blocks from my house, on Webster St. To be truthful, I rarely shop at Safeway, though I did get half my Covid shots there and I occasionally make a purchase. Even so, I am as riled up about the prospective closing, and the lack of process, as the rest of my neighbors. I recognize the role of this store in our neighborhood and the disrespect shown by its sudden, uncommunicative exit.

I'm sure Safeway is making a killing from selling its lot to a big real estate developer. It is making a killing in other ways, too, dealing a severe blow to the primary nexus of our community and jeopardizing the bodily and mental health of families and elderly or disabled residents who depend on it.

The O'Farrell/Fillmore intersection is the heart of our Fillmore neighborhood. Fillmore Plaza is used both for official programs that benefit our community and as a small enterprise social gathering spot. The Farmers' Market takes place across the street. Fillmore Center Plaza and the Fillmore and O'Farrell roadways themselves host festivals, observances, and celebrations. The small local shops flanking the Safeway lot and opening out onto Fillmore are a spillover. Connyer draw from Safeway shopping trips. Safeway closing would adversely affect all of that, especially if the proposed housing would completely close off O'Farrell St. as a pedestrian corridor between Webster and Fillmore. (The curbs and cars of the parking lot already impede foot traffic and the lot entirely blocks vehicular through passage.)

Safeway is the sole full, basic grocery option for certain Fillmore residents – the not-rich, senior, disabled people trying against odds to

continue living independently in this increasingly unaffordable place, the longtime working residents pressed for time by today's demands for overwork just to hang on. Mollie Stone, while near, is esoteric and unaffordable for most of us. Lucky is a long way off, and so is the Safeway on Church and Market. Trader Joe's, slated for 555 Fulton, is not a basic grocery store; it carries unusual items but lacks other, ordinary ones. Ending Safeway removes a convenient, walkable food source. For some of these neighbors, a trip to Safeway means even more: a little exercise, a respite from isolation at home, a chance to run into neighbors, and a ritual or routine that helps stave off dementia or depression. In these ways, Safeway, here for so long and centrally sited, acts as community glue.

We also worry about the housing that will come. 5 or 6 storeys, spread across the lot could work fine, interspersed with landscaping (think Friendship Court or St. Francis Square). As proposed, at 13 storeys, it is yet one more out-of-scale eyesore imposed on our much-abused, much-ignored district. We fear that it will be out of reach financially for current or displaced community members – one more hit of gentrification. We also picture it being both visually monolithic, ugly, and inhospitable, like many of the surrounding Redevelopment structures, and closed off to outside foot traffic. We are afraid that these buildings will not be good, open neighbors, that they will serve to shut down the vibrant hub that is the Fillmore/O'Farrell juncture, that their high prices will further inflate the neighborhood economy, driving out even more longtime residents in a place whose African American population has already been decimated from 60% to 10% by Redevelopment.

Our final complaint is about the manner in which this transfer is taking place – with zero consultation with or consideration for the community. One more time, in our Fillmore/Japantown/Western Addition home, as with Japanese camp imprisonment and all the phases of Redevelopment, decisions that massively affect us are being made for us, about us, without us, by those in higher places with money and power. We were not informed of the sale until it was a done deal. Even now, if you go into Safeway, you will find not a single word about the closing or the land sale. To pick up and leave, without a word of community engagement, is a slap in the face of our infamously beleaguered district of San Francisco.

Jane Jacobs was a brilliant and assiduous New York City citizen-expert on community public safety. She did her work in reaction against Redevelopment, a program which originated in her city and was being unleashed on neighborhoods there, including her own. Fillmore/Western Addition is the poster child for the ruthlessness and failure of Redevelopment, as imported from New York to San Francisco. We are still suffering the destructive aftermath of that trauma, so Jacobs' observations are highly pertinent here. She found that a crucial factor in neighborhood vitality and safety is 24-hour

highly mixed use of a zone – mixed purposes, mixed ages, mixed kinds of people – exactly what the Webster/Fillmore/O'Farrell intersection provides. Shutting the all-night store will change that area from one of safety to one of danger, from whenever Safeway leaves till whenever the next occupant arrives, and if that occupant excludes 24-hour open access and use, ever thereafter.

## NEWS FLASH

I worked on this letter the better part of yesterday, and today we got the news that Safeway is postponing its departure till next January. That is a relief and I'm sure we have the public hue and cry, along with advocacy from the supervisors (especially District 5's Dean Preston), neighborhood organizers, and the mayor to thank. I am glad of this respite and only admonish that the parties involved – Safeway, Alliance, and our politicians – use it constructively to listen to our community and heed our concerns. Do not override us. We know how to keep our home safe and thriving. We don't want to be trod underfoot again.

Sincerely,

Judy Beck

--

To unsubscribe from this group and stop receiving emails from it, send an email to [board+unsubscribe@sfsquare.org](mailto:board+unsubscribe@sfsquare.org).

**From:** [Holly Owen](#)  
**To:** [Board of Supervisors \(BOS\)](#)  
**Subject:** WEBSTER ST.SAFEWAY  
**Date:** Tuesday, January 23, 2024 9:07:05 AM

---

This message is from outside the City email system. Do not open links or attachments from untrusted sources.

TOTHE Board, i had gone to the SAFEWAY in the Marina for years,then while in the FILLMORE found the One which is to be torn down for housing.Before learning of this I realized the whole group of employees were so much nicer and kept thinking that,plus not all the self centered /privelaged buyers;which are in my neighborhood.SO,I WENT BACK THIS PAST WEEKEND,I bought somethings,but when got home realied I was charged too much,so went back;GOD kept me from getting wet,so knew I was blessed,then as I came out,heard the petition,so looked it up and am writing.PLEASE keep this SAFEWAY OPEN,THEY ARE THE BEST ONE,I'VE BEEN TO,plus housing can be built somewhere else,don't tear down this store,the neighborhood needs a grocery less intimidating and cheaper than MOLLE STONE or WHOLEFOODS;both where entitled folks are prominent,there are regular/poorer folks that need a grocery they feel welcome;including myself.THANK YOU! SINCERELY,HOLLY OWEN



**From:** [Stephen Torres](#)  
**To:** [Board of Supervisors \(BOS\)](#)  
**Cc:** [Safai, Ahsha \(BOS\)](#); [ChanStaff \(BOS\)](#); [Preston, Dean \(BOS\)](#); [Peskin, Aaron \(BOS\)](#); [Waltonstaff \(BOS\)](#)  
**Subject:** Support of File No. 240027 Resolution Urging Safeway Inc. to Reverse Decision to close store at 1335 Webster Street  
**Date:** Tuesday, January 23, 2024 11:56:14 AM

---

This message is from outside the City email system. Do not open links or attachments from untrusted sources.

Stephen Torres  
3158 Mission Street, Apartment No. 3  
San Francisco, California 94110

January 23, 2024

The Board of Supervisors of the City & County of San Francisco  
Legislative Chamber, Room 250  
City Hall  
1 Dr. Carlton B. Goodlett Place  
San Francisco, California 94102

Dear President Peskin and Members of the San Francisco Board of Supervisors,

I am writing to you in support of Supervisor Dean Preston's resolution (File No. 240027) urging Safeway Incorporated and all associated holding companies to reverse their decision to close their store located at 1335 Webster Street.

With the recent streamlining of development at the state and municipal level, it is all the more incumbent upon all of us to advocate and do everything within our power to ensure that our most vulnerable communities do not become food deserts as a result of the closure of supermarkets, grocers, and other markets due to the expected increase of real estate speculation and transactions.

The people of the Western Addition have already suffered greatly at the expense of unfettered development and speculation and these communities are endangered of complete disappearance. The risk of losing a major fresh food source for these communities should be met with the action and concern reflecting the crisis that it is.

Please adopt this resolution swiftly on behalf of the communities of the Fillmore, Japantown, Western Addition, and all of San Francisco so that a clear message be sent to Safeway and its parent companies, present and future, that if they are to do business in our city, they must center and include the communities they purport to serve.

Sincerely,

Stephen Torres