



February 26, 2021

Ms. Angela Calvillo
Clerk of the Board
Board of Supervisors
1 Dr. Carlton B. Goodlett Place, Room 244
San Francisco, CA 94102

Subject: 2021 Annual Joint Fundraising Drive

Dear Ms. Calvillo,

Enclosed you will find the following items in order to qualify for the City/County of San Francisco Annual Joint Fundraising Drive:

- Most recent Audited financial statement
- Current agency membership lists for the 2021 campaign year
- Copy of the 501(c)3 IRS determination letter

If you should require any further information, please do not hesitate to contact me.

Sincerely,

Krystie Scull
Relationship Manager

Enclosures

PUBLIC DISCLOSURE COPY

Form **990**
(Rev. January 2020)
Department of the Treasury
Internal Revenue Service

Return of Organization Exempt From Income Tax
Under section 501(c), 527, or 4947(a)(1) of the Internal Revenue Code (except private foundations)

2019
Open to Public Inspection

Do not enter social security numbers on this form as it may be made public.
Go to www.irs.gov/Form990 for instructions and the latest information.

A For the 2019 calendar year, or tax year beginning **JUL 1, 2019** and ending **JUN 30, 2020**

B Check if applicable: <input type="checkbox"/> Address change <input checked="" type="checkbox"/> Name change <input type="checkbox"/> Initial return <input type="checkbox"/> Final return/terminated <input type="checkbox"/> Amended return <input type="checkbox"/> Application pending	C Name of organization CHC: CREATING HEALTHIER COMMUNITIES		D Employer identification number 13-6167225
	Doing business as		E Telephone number (703)528-1007
	Number and street (or P.O. box if mail is not delivered to street address)	Room/suite	G Gross receipts \$ 22,565,593.
	1199 N. FAIRFAX STREET, SUITE 600 ALEXANDRIA, VA 22314		H(a) Is this a group return for subordinates? <input type="checkbox"/> Yes <input checked="" type="checkbox"/> No H(b) Are all subordinates included? <input type="checkbox"/> Yes <input type="checkbox"/> No If "No," attach a list. (see instructions)
F Name and address of principal officer: THOMAS G. BOGNANNO SAME AS C ABOVE		H(c) Group exemption number ▶	
I Tax-exempt status: <input checked="" type="checkbox"/> 501(c)(3) <input type="checkbox"/> 501(c) () (insert no.) <input type="checkbox"/> 4947(a)(1) or <input type="checkbox"/> 527			
J Website: WWW.HEALTHCHARITIES.ORG			
K Form of organization: <input checked="" type="checkbox"/> Corporation <input type="checkbox"/> Trust <input type="checkbox"/> Association <input type="checkbox"/> Other ▶			L Year of formation: 1957
M State of legal domicile: DC			

Part I Summary		Prior Year	Current Year
1 Briefly describe the organization's mission or most significant activities: SEE SCHEDULE O			
2 Check this box <input type="checkbox"/> if the organization discontinued its operations or disposed of more than 25% of its net assets.			
3 Number of voting members of the governing body (Part VI, line 1a)	3		24
4 Number of independent voting members of the governing body (Part VI, line 1b)	4		24
5 Total number of individuals employed in calendar year 2019 (Part V, line 2a)	5		52
6 Total number of volunteers (estimate if necessary)	6		24
7a Total unrelated business revenue from Part VIII, column (C), line 12	7a		0.
7b Net unrelated business taxable income from Form 990-T, line 39	7b		0.
8 Contributions and grants (Part VIII, line 1h)		21,322,342.	21,768,194.
9 Program service revenue (Part VIII, line 2g)		1,153,295.	725,664.
10 Investment income (Part VIII, column (A), lines 3, 4, and 7d)		72,040.	69,634.
11 Other revenue (Part VIII, column (A), lines 5, 6d, 8c, 9c, 10c, and 11e)		15,636.	0.
12 Total revenue - add lines 8 through 11 (must equal Part VIII, column (A), line 12)		22,563,313.	22,563,492.
13 Grants and similar amounts paid (Part IX, column (A), lines 1-3)		15,624,113.	15,466,094.
14 Benefits paid to or for members (Part IX, column (A), line 4)		0.	0.
15 Salaries, other compensation, employee benefits (Part IX, column (A), lines 5-10)		4,041,926.	4,167,514.
16a Professional fundraising fees (Part IX, column (A), line 11e)		0.	0.
b Total fundraising expenses (Part IX, column (D), line 25) ▶ 312,882.			
17 Other expenses (Part IX, column (A), lines 11a-11d, 11f-24e)		1,854,436.	1,976,070.
18 Total expenses. Add lines 13-17 (must equal Part IX, column (A), line 25)		21,520,475.	21,609,678.
19 Revenue less expenses. Subtract line 18 from line 12		1,042,838.	953,814.
20 Total assets (Part X, line 16)		26,124,414.	22,475,123.
21 Total liabilities (Part X, line 26)		17,629,127.	13,026,642.
22 Net assets or fund balances. Subtract line 21 from line 20		8,495,287.	9,448,481.

Part II Signature Block

Under penalties of perjury, I declare that I have examined this return, including accompanying schedules and statements, and to the best of my knowledge and belief, it is true, correct, and complete. Declaration of preparer (other than officer) is based on all information of which preparer has any knowledge.

Sign Here	Signature of officer <i>Thomas G. Bognanno</i>	Date 1/29/2021
	THOMAS G. BOGNANNO, PRESIDENT AND CEO Type or print name and title	
Paid Preparer Use Only	Print/Type preparer's name RAYMOND BARBAGALLO	Preparer's signature <i>Raymond Barbagallo</i>
	Firm's name ▶ CHERRY BEKAERT, LLP.	Date 2021.01.15 14:41:41 -05'00'
	Firm's address ▶ 6116 EXECUTIVE BLVD, SUITE 600 ROCKVILLE, MD 20852	Check if self-employed <input type="checkbox"/> PTIN P00173692
		Firm's EIN ▶ 56-0574444
		Phone no. 301-589-9000

May the IRS discuss this return with the preparer shown above? (see instructions) Yes No

Part III Statement of Program Service Accomplishments

Check if Schedule O contains a response or note to any line in this Part III [X]

1 Briefly describe the organization's mission: SEE SCHEDULE O

2 Did the organization undertake any significant program services during the year which were not listed on the prior Form 990 or 990-EZ? [] Yes [X] No

3 Did the organization cease conducting, or make significant changes in how it conducts, any program services? [] Yes [X] No

4 Describe the organization's program service accomplishments for each of its three largest program services, as measured by expenses. Section 501(c)(3) and 501(c)(4) organizations are required to report the amount of grants and allocations to others, the total expenses, and revenue, if any, for each program service reported.

4a (Code:) (Expenses \$ 20,531,322. including grants of \$ 15,466,094.) (Revenue \$ 725,664.) THE ORGANIZATION DISTRIBUTES FUNDS FROM COMBINED FEDERAL AND PRIVATE SECTOR CAMPAIGNS TO MEMBER HEALTH AGENCIES. PROGRAM SERVICE EXPENSES REFLECT THESE DISBURSEMENTS AND THE EXPENSES DIRECTLY RELATED TO MAKING THESE DISTRIBUTIONS.

4b (Code:) (Expenses \$ including grants of \$) (Revenue \$)

4c (Code:) (Expenses \$ including grants of \$) (Revenue \$)

4d Other program services (Describe on Schedule O.) (Expenses \$ including grants of \$) (Revenue \$)

4e Total program service expenses 20,531,322.

Part IV Checklist of Required Schedules

		Yes	No
1	Is the organization described in section 501(c)(3) or 4947(a)(1) (other than a private foundation)? <i>If "Yes," complete Schedule A</i>	X	
2	Is the organization required to complete <i>Schedule B, Schedule of Contributors</i> ?	X	
3	Did the organization engage in direct or indirect political campaign activities on behalf of or in opposition to candidates for public office? <i>If "Yes," complete Schedule C, Part I</i>		X
4	Section 501(c)(3) organizations. Did the organization engage in lobbying activities, or have a section 501(h) election in effect during the tax year? <i>If "Yes," complete Schedule C, Part II</i>		X
5	Is the organization a section 501(c)(4), 501(c)(5), or 501(c)(6) organization that receives membership dues, assessments, or similar amounts as defined in Revenue Procedure 98-19? <i>If "Yes," complete Schedule C, Part III</i>		X
6	Did the organization maintain any donor advised funds or any similar funds or accounts for which donors have the right to provide advice on the distribution or investment of amounts in such funds or accounts? <i>If "Yes," complete Schedule D, Part I</i>		X
7	Did the organization receive or hold a conservation easement, including easements to preserve open space, the environment, historic land areas, or historic structures? <i>If "Yes," complete Schedule D, Part II</i>		X
8	Did the organization maintain collections of works of art, historical treasures, or other similar assets? <i>If "Yes," complete Schedule D, Part III</i>		X
9	Did the organization report an amount in Part X, line 21, for escrow or custodial account liability, serve as a custodian for amounts not listed in Part X; or provide credit counseling, debt management, credit repair, or debt negotiation services? <i>If "Yes," complete Schedule D, Part IV</i>		X
10	Did the organization, directly or through a related organization, hold assets in donor-restricted endowments or in quasi endowments? <i>If "Yes," complete Schedule D, Part V</i>		X
11	If the organization's answer to any of the following questions is "Yes," then complete Schedule D, Parts VI, VII, VIII, IX, or X as applicable.		
11a	Did the organization report an amount for land, buildings, and equipment in Part X, line 10? <i>If "Yes," complete Schedule D, Part VI</i>	X	
11b	Did the organization report an amount for investments - other securities in Part X, line 12, that is 5% or more of its total assets reported in Part X, line 16? <i>If "Yes," complete Schedule D, Part VII</i>		X
11c	Did the organization report an amount for investments - program related in Part X, line 13, that is 5% or more of its total assets reported in Part X, line 16? <i>If "Yes," complete Schedule D, Part VIII</i>		X
11d	Did the organization report an amount for other assets in Part X, line 15, that is 5% or more of its total assets reported in Part X, line 16? <i>If "Yes," complete Schedule D, Part IX</i>		X
11e	Did the organization report an amount for other liabilities in Part X, line 25? <i>If "Yes," complete Schedule D, Part X</i>		X
11f	Did the organization's separate or consolidated financial statements for the tax year include a footnote that addresses the organization's liability for uncertain tax positions under FIN 48 (ASC 740)? <i>If "Yes," complete Schedule D, Part X</i>	X	
12a	Did the organization obtain separate, independent audited financial statements for the tax year? <i>If "Yes," complete Schedule D, Parts XI and XII</i>		X
12b	Was the organization included in consolidated, independent audited financial statements for the tax year? <i>If "Yes," and if the organization answered "No" to line 12a, then completing Schedule D, Parts XI and XII is optional</i>	X	
13	Is the organization a school described in section 170(b)(1)(A)(ii)? <i>If "Yes," complete Schedule E</i>		X
14a	Did the organization maintain an office, employees, or agents outside of the United States?		X
14b	Did the organization have aggregate revenues or expenses of more than \$10,000 from grantmaking, fundraising, business, investment, and program service activities outside the United States, or aggregate foreign investments valued at \$100,000 or more? <i>If "Yes," complete Schedule F, Parts I and IV</i>		X
15	Did the organization report on Part IX, column (A), line 3, more than \$5,000 of grants or other assistance to or for any foreign organization? <i>If "Yes," complete Schedule F, Parts II and IV</i>		X
16	Did the organization report on Part IX, column (A), line 3, more than \$5,000 of aggregate grants or other assistance to or for foreign individuals? <i>If "Yes," complete Schedule F, Parts III and IV</i>		X
17	Did the organization report a total of more than \$15,000 of expenses for professional fundraising services on Part IX, column (A), lines 6 and 11e? <i>If "Yes," complete Schedule G, Part I</i>		X
18	Did the organization report more than \$15,000 total of fundraising event gross income and contributions on Part VIII, lines 1c and 8a? <i>If "Yes," complete Schedule G, Part II</i>		X
19	Did the organization report more than \$15,000 of gross income from gaming activities on Part VIII, line 9a? <i>If "Yes," complete Schedule G, Part III</i>		X
20a	Did the organization operate one or more hospital facilities? <i>If "Yes," complete Schedule H</i>		X
20b	If "Yes" to line 20a, did the organization attach a copy of its audited financial statements to this return?		
21	Did the organization report more than \$5,000 of grants or other assistance to any domestic organization or domestic government on Part IX, column (A), line 1? <i>If "Yes," complete Schedule I, Parts I and II</i>	X	

Part IV Checklist of Required Schedules (continued)

Table with 3 columns: Question ID, Question Text, and Yes/No columns. Rows include questions 22 through 38 regarding grants, compensation, tax-exempt bonds, and controlled entities.

Part V Statements Regarding Other IRS Filings and Tax Compliance

Check if Schedule O contains a response or note to any line in this Part V

Table with 3 columns: Question ID, Question Text, and Yes/No columns. Rows include questions 1a, 1b, and 1c regarding Form 1096, Forms W-2G, and backup withholding rules.

Part V Statements Regarding Other IRS Filings and Tax Compliance (continued)

		Yes	No
2a	Enter the number of employees reported on Form W-3, Transmittal of Wage and Tax Statements, filed for the calendar year ending with or within the year covered by this return 52		
b	If at least one is reported on line 2a, did the organization file all required federal employment tax returns? <i>Note: If the sum of lines 1a and 2a is greater than 250, you may be required to e-file (see instructions)</i>	X	
3a	Did the organization have unrelated business gross income of \$1,000 or more during the year?		X
b	If "Yes," has it filed a Form 990-T for this year? <i>If "No" to line 3b, provide an explanation on Schedule O</i>		
4a	At any time during the calendar year, did the organization have an interest in, or a signature or other authority over, a financial account in a foreign country (such as a bank account, securities account, or other financial account)?		X
b	If "Yes," enter the name of the foreign country ▶ See instructions for filing requirements for FinCEN Form 114, Report of Foreign Bank and Financial Accounts (FBAR).		
5a	Was the organization a party to a prohibited tax shelter transaction at any time during the tax year?		X
b	Did any taxable party notify the organization that it was or is a party to a prohibited tax shelter transaction?		X
c	If "Yes" to line 5a or 5b, did the organization file Form 8886-T?		
6a	Does the organization have annual gross receipts that are normally greater than \$100,000, and did the organization solicit any contributions that were not tax deductible as charitable contributions?		X
b	If "Yes," did the organization include with every solicitation an express statement that such contributions or gifts were not tax deductible?		
7 Organizations that may receive deductible contributions under section 170(c).			
a	Did the organization receive a payment in excess of \$75 made partly as a contribution and partly for goods and services provided to the payor?		X
b	If "Yes," did the organization notify the donor of the value of the goods or services provided?		
c	Did the organization sell, exchange, or otherwise dispose of tangible personal property for which it was required to file Form 8282?		X
d	If "Yes," indicate the number of Forms 8282 filed during the year 7d		
e	Did the organization receive any funds, directly or indirectly, to pay premiums on a personal benefit contract?		X
f	Did the organization, during the year, pay premiums, directly or indirectly, on a personal benefit contract?		X
g	If the organization received a contribution of qualified intellectual property, did the organization file Form 8899 as required?		
h	If the organization received a contribution of cars, boats, airplanes, or other vehicles, did the organization file a Form 1098-C?		
8	Sponsoring organizations maintaining donor advised funds. Did a donor advised fund maintained by the sponsoring organization have excess business holdings at any time during the year?		
9	Sponsoring organizations maintaining donor advised funds.		
a	Did the sponsoring organization make any taxable distributions under section 4966?		
b	Did the sponsoring organization make a distribution to a donor, donor advisor, or related person?		
10	Section 501(c)(7) organizations. Enter:		
a	Initiation fees and capital contributions included on Part VIII, line 12 10a		
b	Gross receipts, included on Form 990, Part VIII, line 12, for public use of club facilities 10b		
11	Section 501(c)(12) organizations. Enter:		
a	Gross income from members or shareholders 11a		
b	Gross income from other sources (Do not net amounts due or paid to other sources against amounts due or received from them.) 11b		
12a	Section 4947(a)(1) non-exempt charitable trusts. Is the organization filing Form 990 in lieu of Form 1041?		
b	If "Yes," enter the amount of tax-exempt interest received or accrued during the year 12b		
13	Section 501(c)(29) qualified nonprofit health insurance issuers.		
a	Is the organization licensed to issue qualified health plans in more than one state? <i>Note: See the instructions for additional information the organization must report on Schedule O.</i>		
b	Enter the amount of reserves the organization is required to maintain by the states in which the organization is licensed to issue qualified health plans 13b		
c	Enter the amount of reserves on hand 13c		
14a	Did the organization receive any payments for indoor tanning services during the tax year?		X
b	If "Yes," has it filed a Form 720 to report these payments? <i>If "No," provide an explanation on Schedule O</i>		
15	Is the organization subject to the section 4960 tax on payment(s) of more than \$1,000,000 in remuneration or excess parachute payment(s) during the year? <i>If "Yes," see instructions and file Form 4720, Schedule N.</i>		X
16	Is the organization an educational institution subject to the section 4968 excise tax on net investment income? <i>If "Yes," complete Form 4720, Schedule O.</i>		X

Part VI Governance, Management, and Disclosure For each "Yes" response to lines 2 through 7b below, and for a "No" response to line 8a, 8b, or 10b below, describe the circumstances, processes, or changes on Schedule O. See instructions.

Check if Schedule O contains a response or note to any line in this Part VI [X]

Section A. Governing Body and Management

Table with 3 columns: Question, Yes, No. Rows include: 1a Enter the number of voting members of the governing body at the end of the tax year; 2 Did any officer, director, trustee, or key employee have a family relationship or a business relationship with any other officer, director, trustee, or key employee?; 3 Did the organization delegate control over management duties customarily performed by or under the direct supervision of officers, directors, trustees, or key employees to a management company or other person?; 4 Did the organization make any significant changes to its governing documents since the prior Form 990 was filed?; 5 Did the organization become aware during the year of a significant diversion of the organization's assets?; 6 Did the organization have members or stockholders?; 7a Did the organization have members, stockholders, or other persons who had the power to elect or appoint one or more members of the governing body?; 7b Are any governance decisions of the organization reserved to (or subject to approval by) members, stockholders, or persons other than the governing body?; 8 Did the organization contemporaneously document the meetings held or written actions undertaken during the year by the following: a The governing body? b Each committee with authority to act on behalf of the governing body?; 9 Is there any officer, director, trustee, or key employee listed in Part VII, Section A, who cannot be reached at the organization's mailing address? If "Yes," provide the names and addresses on Schedule O.

Section B. Policies (This Section B requests information about policies not required by the Internal Revenue Code.)

Table with 3 columns: Question, Yes, No. Rows include: 10a Did the organization have local chapters, branches, or affiliates?; 10b If "Yes," did the organization have written policies and procedures governing the activities of such chapters, affiliates, and branches to ensure their operations are consistent with the organization's exempt purposes?; 11a Has the organization provided a complete copy of this Form 990 to all members of its governing body before filing the form?; 11b Describe in Schedule O the process, if any, used by the organization to review this Form 990.; 12a Did the organization have a written conflict of interest policy? If "No," go to line 13; 12b Were officers, directors, or trustees, and key employees required to disclose annually interests that could give rise to conflicts?; 12c Did the organization regularly and consistently monitor and enforce compliance with the policy? If "Yes," describe in Schedule O how this was done; 13 Did the organization have a written whistleblower policy?; 14 Did the organization have a written document retention and destruction policy?; 15 Did the process for determining compensation of the following persons include a review and approval by independent persons, comparability data, and contemporaneous substantiation of the deliberation and decision?; 15a The organization's CEO, Executive Director, or top management official; 15b Other officers or key employees of the organization; 16a Did the organization invest in, contribute assets to, or participate in a joint venture or similar arrangement with a taxable entity during the year?; 16b If "Yes," did the organization follow a written policy or procedure requiring the organization to evaluate its participation in joint venture arrangements under applicable federal tax law, and take steps to safeguard the organization's exempt status with respect to such arrangements?

Section C. Disclosure

- 17 List the states with which a copy of this Form 990 is required to be filed AL, AR, CA, CT, FL, GA, HI, IL, KS, KY, MD, MA
18 Section 6104 requires an organization to make its Forms 1023 (1024 or 1024-A, if applicable), 990, and 990-T (Section 501(c)(3)s only) available for public inspection. Indicate how you made these available. Check all that apply.
[X] Own website [X] Another's website [X] Upon request [] Other (explain on Schedule O)
19 Describe on Schedule O whether (and if so, how) the organization made its governing documents, conflict of interest policy, and financial statements available to the public during the tax year.
20 State the name, address, and telephone number of the person who possesses the organization's books and records
MOLLY GRAVHOLT - 703-528-1007
1199 N. FAIRFAX STREET, SUITE 600, ALEXANDRIA, VA 22314

Part VII Compensation of Officers, Directors, Trustees, Key Employees, Highest Compensated Employees, and Independent Contractors

Check if Schedule O contains a response or note to any line in this Part VII

Section A. Officers, Directors, Trustees, Key Employees, and Highest Compensated Employees

1a Complete this table for all persons required to be listed. Report compensation for the calendar year ending with or within the organization's tax year.

- List all of the organization's **current** officers, directors, trustees (whether individuals or organizations), regardless of amount of compensation. Enter -0- in columns (D), (E), and (F) if no compensation was paid.
 - List all of the organization's **current** key employees, if any. See instructions for definition of "key employee."
 - List the organization's five **current** highest compensated employees (other than an officer, director, trustee, or key employee) who received reportable compensation (Box 5 of Form W-2 and/or Box 7 of Form 1099-MISC) of more than \$100,000 from the organization and any related organizations.
 - List all of the organization's **former** officers, key employees, and highest compensated employees who received more than \$100,000 of reportable compensation from the organization and any related organizations.
 - List all of the organization's **former directors or trustees** that received, in the capacity as a former director or trustee of the organization, more than \$10,000 of reportable compensation from the organization and any related organizations.
- See instructions for the order in which to list the persons above.

Check this box if neither the organization nor any related organization compensated any current officer, director, or trustee.

(A) Name and title	(B) Average hours per week (list any hours for related organizations below line)	(C) Position (do not check more than one box, unless person is both an officer and a director/trustee)						(D) Reportable compensation from the organization (W-2/1099-MISC)	(E) Reportable compensation from related organizations (W-2/1099-MISC)	(F) Estimated amount of other compensation from the organization and related organizations
		Individual trustee or director	Institutional trustee	Officer	Key employee	Highest compensated employee	Former			
(1) CYNTHIA ROLFE CHAIR	2.00	X		X				0.	0.	0.
(2) KEVIN CLAYTON VICE CHAIR	2.00	X		X				0.	0.	0.
(3) LINDA G. BLOUNT VICE CHAIR	2.00	X		X				0.	0.	0.
(4) ADAM ROTHSCHILD SECRETARY	2.00	X		X				0.	0.	0.
(5) DR. CHARU RAHEJA TREASURER	2.00	X		X				0.	0.	0.
(6) ABU M. ARIF DIRECTOR	2.00	X						0.	0.	0.
(7) WALT CHESLEY DIRECTOR	2.00	X						0.	0.	0.
(8) ALEX CUNNINGHAM DIRECTOR	2.00	X						0.	0.	0.
(9) ANGIE DAHL DIRECTOR	2.00	X						0.	0.	0.
(10) PETER DUDLEY DIRECTOR	2.00	X						0.	0.	0.
(11) ERIN GOLLHOFER DIRECTOR	2.00	X						0.	0.	0.
(12) XIAOTENG HUANG DIRECTOR	2.00	X						0.	0.	0.
(13) ERIC T. JONES DIRECTOR	2.00	X						0.	0.	0.
(14) DR. STEPHEN KEITH, MD DIRECTOR	2.00	X						0.	0.	0.
(15) DR. SANDRA B. NICHOLS, MD DIRECTOR	2.00	X						0.	0.	0.
(16) JILLIAN NIESLEY DIRECTOR	2.00	X						0.	0.	0.
(17) CHARLEEDA REDMAN DIRECTOR	2.00	X						0.	0.	0.

Part VII Section A. Officers, Directors, Trustees, Key Employees, and Highest Compensated Employees *(continued)*

(A) Name and title	(B) Average hours per week (list any hours for related organizations below line)	(C) Position (do not check more than one box, unless person is both an officer and a director/trustee)						(D) Reportable compensation from the organization (W-2/1099-MISC)	(E) Reportable compensation from related organizations (W-2/1099-MISC)	(F) Estimated amount of other compensation from the organization and related organizations
		Individual trustee or director	Institutional trustee	Officer	Key employee	Highest compensated employee	Former			
(18) TIFFANY REEVES DIRECTOR	2.00	X						0.	0.	0.
(19) ROMANA ROLNIAK DIRECTOR	2.00	X						0.	0.	0.
(20) BETH RUSERT DIRECTOR	2.00	X						0.	0.	0.
(21) KAREN SPRUILL DIRECTOR	2.00	X						0.	0.	0.
(22) JOHN M. STANOCH DIRECTOR	2.00	X						0.	0.	0.
(23) TELEANGE THOMAS DIRECTOR	2.00	X						0.	0.	0.
(24) WAMWARI WAICHUNGO DIRECTOR	2.00	X						0.	0.	0.
(25) THOMAS BOGNANNO PRESIDENT & CEO	40.00	X		X				324,608.	0.	28,651.
(26) MOLLY GRAVHOLT COO & CFO	40.00			X				233,300.	0.	14,885.
1b Subtotal								557,908.	0.	43,536.
c Total from continuation sheets to Part VII, Section A								339,416.	0.	27,797.
d Total (add lines 1b and 1c)								897,324.	0.	71,333.

2 Total number of individuals (including but not limited to those listed above) who received more than \$100,000 of reportable compensation from the organization **4**

	Yes	No
3 Did the organization list any former officer, director, trustee, key employee, or highest compensated employee on line 1a? <i>If "Yes," complete Schedule J for such individual</i>		X
4 For any individual listed on line 1a, is the sum of reportable compensation and other compensation from the organization and related organizations greater than \$150,000? <i>If "Yes," complete Schedule J for such individual</i>	X	
5 Did any person listed on line 1a receive or accrue compensation from any unrelated organization or individual for services rendered to the organization? <i>If "Yes," complete Schedule J for such person</i>		X

Section B. Independent Contractors

1 Complete this table for your five highest compensated independent contractors that received more than \$100,000 of compensation from the organization. Report compensation for the calendar year ending with or within the organization's tax year.

(A) Name and business address	(B) Description of services	(C) Compensation
SPARKS PERSONNEL SERVICES, INC. P.O. BOX 37256, BALTIMORE, MD 21297	TEMPORARY STAFFING	209,422.
BRBS WORLD, LLC. 11851 SPIRAL PASS, CINCINNATE, OH 45249	CONSULTING	115,084.
RED RIVER - CWPS P.O. BOX 786622, PHILADELPHIA, PA 19178	COMPUTER MAINTENANCE	112,806.

2 Total number of independent contractors (including but not limited to those listed above) who received more than \$100,000 of compensation from the organization **3**

SEE PART VII, SECTION A CONTINUATION SHEETS

Part VII Section A. Officers, Directors, Trustees, Key Employees, and Highest Compensated Employees *(continued)*

(A) Name and title	(B) Average hours per week (list any hours for related organizations below line)	(C) Position (check all that apply)						(D) Reportable compensation from the organization (W-2/1099-MISC)	(E) Reportable compensation from related organizations (W-2/1099-MISC)	(F) Estimated amount of other compensation from the organization and related organizations
		Individual trustee or director	Institutional trustee	Officer	Key employee	Highest compensated employee	Former			
(27) SHELLEY HAYES CHIEF DEVELOPMENT OFFICER	40.00					X		161,308.	0.	16,565.
(28) AMANDA PONZAR CHIEF COMMUNICATIONS OFFICER	40.00					X		178,108.	0.	11,232.
Total to Part VII, Section A, line 1c								339,416.		27,797.

Part VIII Statement of Revenue

Check if Schedule O contains a response or note to any line in this Part VIII

		(A) Total revenue	(B) Related or exempt function revenue	(C) Unrelated business revenue	(D) Revenue excluded from tax under sections 512 - 514	
Contributions, Gifts, Grants and Other Similar Amounts	1 a Federated campaigns	21,356,817.				
	1 b Membership dues					
	1 c Fundraising events					
	1 d Related organizations					
	1 e Government grants (contributions)					
	1 f All other contributions, gifts, grants, and similar amounts not included above	411,377.				
	1 g Noncash contributions included in lines 1a-1f					
	1 g \$					
	h Total. Add lines 1a-1f	21,768,194.				
Program Service Revenue	2 a APPLICATION FEES	561000	453,919.	453,919.		
	b MANAGEMENT FEES	561000	249,845.	249,845.		
	c GENERAL PROMOTIONS	561000	21,900.	21,900.		
	d					
	e					
	f All other program service revenue					
	g Total. Add lines 2a-2f		725,664.			
Other Revenue	3 Investment income (including dividends, interest, and other similar amounts)		71,735.		71,735.	
	4 Income from investment of tax-exempt bond proceeds					
	5 Royalties					
	6 a Gross rents	(i) Real				
		(ii) Personal				
		6 a				
	b Less: rental expenses	6b				
	c Rental income or (loss)	6c				
	d Net rental income or (loss)					
	7 a Gross amount from sales of assets other than inventory	(i) Securities				
		(ii) Other				
		7 a				
	b Less: cost or other basis and sales expenses	7b		2,101.		
	c Gain or (loss)	7c		<2,101.>		
	d Net gain or (loss)			<2,101.>		<2,101.>
8 a Gross income from fundraising events (not including \$ of contributions reported on line 1c). See Part IV, line 18	8a					
b Less: direct expenses	8b					
c Net income or (loss) from fundraising events						
9 a Gross income from gaming activities. See Part IV, line 19	9a					
b Less: direct expenses	9b					
c Net income or (loss) from gaming activities						
10 a Gross sales of inventory, less returns and allowances	10a					
	b Less: cost of goods sold	10b				
	c Net income or (loss) from sales of inventory					
Miscellaneous Revenue	11 a	Business Code				
	b					
	c					
	d All other revenue					
	e Total. Add lines 11a-11d					
12 Total revenue. See instructions		22,563,492.	725,664.	0.	69,634.	

Part IX Statement of Functional Expenses

Section 501(c)(3) and 501(c)(4) organizations must complete all columns. All other organizations must complete column (A).

Check if Schedule O contains a response or note to any line in this Part IX

Do not include amounts reported on lines 6b, 7b, 8b, 9b, and 10b of Part VIII.	(A) Total expenses	(B) Program service expenses	(C) Management and general expenses	(D) Fundraising expenses
1 Grants and other assistance to domestic organizations and domestic governments. See Part IV, line 21 ...	15,466,094.	15,466,094.		
2 Grants and other assistance to domestic individuals. See Part IV, line 22				
3 Grants and other assistance to foreign organizations, foreign governments, and foreign individuals. See Part IV, lines 15 and 16				
4 Benefits paid to or for members				
5 Compensation of current officers, directors, trustees, and key employees	618,610.	508,852.	72,473.	37,285.
6 Compensation not included above to disqualified persons (as defined under section 4958(f)(1)) and persons described in section 4958(c)(3)(B)				
7 Other salaries and wages	2,848,715.	2,343,278.	333,740.	171,697.
8 Pension plan accruals and contributions (include section 401(k) and 403(b) employer contributions)	185,060.	152,225.	21,681.	11,154.
9 Other employee benefits	267,551.	220,080.	31,345.	16,126.
10 Payroll taxes	247,578.	203,652.	29,004.	14,922.
11 Fees for services (nonemployees):				
a Management				
b Legal	104,696.	88,992.	15,704.	
c Accounting	112,273.	95,432.	16,841.	
d Lobbying				
e Professional fundraising services. See Part IV, line 17				
f Investment management fees	9,198.		9,198.	
g Other. (If line 11g amount exceeds 10% of line 25, column (A) amount, list line 11g expenses on Sch. O.)	515,603.	438,263.	77,340.	
12 Advertising and promotion	98,166.	80,496.	11,780.	5,890.
13 Office expenses	421,302.	361,703.	39,644.	19,955.
14 Information technology				
15 Royalties				
16 Occupancy	286,742.	227,984.	47,237.	11,521.
17 Travel	111,579.	91,782.	13,073.	6,724.
18 Payments of travel or entertainment expenses for any federal, state, or local public officials				
19 Conferences, conventions, and meetings	24,378.	12,189.	12,189.	
20 Interest				
21 Payments to affiliates				
22 Depreciation, depletion, and amortization	23,326.	19,187.	2,733.	1,406.
23 Insurance	51,128.	42,056.	5,990.	3,082.
24 Other expenses. Itemize expenses not covered above (List miscellaneous expenses on line 24e. If line 24e amount exceeds 10% of line 25, column (A) amount, list line 24e expenses on Schedule O.)				
a DUES AND FEES	204,056.	167,851.	23,906.	12,299.
b TRAINING	13,623.	11,206.	1,596.	821.
c				
d				
e All other expenses				
25 Total functional expenses. Add lines 1 through 24e	21,609,678.	20,531,322.	765,474.	312,882.
26 Joint costs. Complete this line only if the organization reported in column (B) joint costs from a combined educational campaign and fundraising solicitation.				

Check here if following SOP 98-2 (ASC 958-720)

Part X Balance Sheet

Check if Schedule O contains a response or note to any line in this Part X

		(A) Beginning of year		(B) End of year
Assets	1 Cash - non-interest-bearing		1	
	2 Savings and temporary cash investments	10,412,473.	2	8,949,099.
	3 Pledges and grants receivable, net	13,324,461.	3	10,476,576.
	4 Accounts receivable, net	226,008.	4	597,247.
	5 Loans and other receivables from any current or former officer, director, trustee, key employee, creator or founder, substantial contributor, or 35% controlled entity or family member of any of these persons		5	
	6 Loans and other receivables from other disqualified persons (as defined under section 4958(f)(1)), and persons described in section 4958(c)(3)(B)		6	
	7 Notes and loans receivable, net		7	
	8 Inventories for sale or use		8	
	9 Prepaid expenses and deferred charges	71,080.	9	99,044.
	10a Land, buildings, and equipment: cost or other basis. Complete Part VI of Schedule D	10a 112,977.		
	b Less: accumulated depreciation	10b 76,355.	38,729.	10c 36,622.
	11 Investments - publicly traded securities	1,996,183.	11	2,058,100.
	12 Investments - other securities. See Part IV, line 11		12	
	13 Investments - program-related. See Part IV, line 11		13	
	14 Intangible assets		14	
	15 Other assets. See Part IV, line 11	55,480.	15	258,435.
16 Total assets. Add lines 1 through 15 (must equal line 33)	26,124,414.	16	22,475,123.	
Liabilities	17 Accounts payable and accrued expenses	2,805,933.	17	2,281,282.
	18 Grants payable	14,787,475.	18	10,745,360.
	19 Deferred revenue		19	
	20 Tax-exempt bond liabilities		20	
	21 Escrow or custodial account liability. Complete Part IV of Schedule D		21	
	22 Loans and other payables to any current or former officer, director, trustee, key employee, creator or founder, substantial contributor, or 35% controlled entity or family member of any of these persons		22	
	23 Secured mortgages and notes payable to unrelated third parties		23	
	24 Unsecured notes and loans payable to unrelated third parties		24	
	25 Other liabilities (including federal income tax, payables to related third parties, and other liabilities not included on lines 17-24). Complete Part X of Schedule D	35,719.	25	0.
	26 Total liabilities. Add lines 17 through 25	17,629,127.	26	13,026,642.
Net Assets or Fund Balances	Organizations that follow FASB ASC 958, check here <input checked="" type="checkbox"/> and complete lines 27, 28, 32, and 33.			
	27 Net assets without donor restrictions	8,495,287.	27	9,448,481.
	28 Net assets with donor restrictions		28	
	Organizations that do not follow FASB ASC 958, check here <input type="checkbox"/> and complete lines 29 through 33.			
	29 Capital stock or trust principal, or current funds		29	
	30 Paid-in or capital surplus, or land, building, or equipment fund		30	
	31 Retained earnings, endowment, accumulated income, or other funds		31	
32 Total net assets or fund balances	8,495,287.	32	9,448,481.	
33 Total liabilities and net assets/fund balances	26,124,414.	33	22,475,123.	

Part XI Reconciliation of Net Assets

Check if Schedule O contains a response or note to any line in this Part XI

1	Total revenue (must equal Part VIII, column (A), line 12)	1	22,563,492.
2	Total expenses (must equal Part IX, column (A), line 25)	2	21,609,678.
3	Revenue less expenses. Subtract line 2 from line 1	3	953,814.
4	Net assets or fund balances at beginning of year (must equal Part X, line 32, column (A))	4	8,495,287.
5	Net unrealized gains (losses) on investments	5	<620.>
6	Donated services and use of facilities	6	
7	Investment expenses	7	
8	Prior period adjustments	8	
9	Other changes in net assets or fund balances (explain on Schedule O)	9	0.
10	Net assets or fund balances at end of year. Combine lines 3 through 9 (must equal Part X, line 32, column (B))	10	9,448,481.

Part XII Financial Statements and Reporting

Check if Schedule O contains a response or note to any line in this Part XII

		Yes	No
1	Accounting method used to prepare the Form 990: <input type="checkbox"/> Cash <input checked="" type="checkbox"/> Accrual <input type="checkbox"/> Other		
If the organization changed its method of accounting from a prior year or checked "Other," explain in Schedule O.			
2a	Were the organization's financial statements compiled or reviewed by an independent accountant?		X
If "Yes," check a box below to indicate whether the financial statements for the year were compiled or reviewed on a separate basis, consolidated basis, or both:			
<input type="checkbox"/> Separate basis <input type="checkbox"/> Consolidated basis <input type="checkbox"/> Both consolidated and separate basis			
b	Were the organization's financial statements audited by an independent accountant?	X	
If "Yes," check a box below to indicate whether the financial statements for the year were audited on a separate basis, consolidated basis, or both:			
<input type="checkbox"/> Separate basis <input checked="" type="checkbox"/> Consolidated basis <input type="checkbox"/> Both consolidated and separate basis			
c	If "Yes" to line 2a or 2b, does the organization have a committee that assumes responsibility for oversight of the audit, review, or compilation of its financial statements and selection of an independent accountant?	X	
If the organization changed either its oversight process or selection process during the tax year, explain on Schedule O.			
3a	As a result of a federal award, was the organization required to undergo an audit or audits as set forth in the Single Audit Act and OMB Circular A-133?		X
b	If "Yes," did the organization undergo the required audit or audits? If the organization did not undergo the required audit or audits, explain why on Schedule O and describe any steps taken to undergo such audits		

SCHEDULE A
(Form 990 or 990-EZ)

Department of the Treasury
Internal Revenue Service

Public Charity Status and Public Support
Complete if the organization is a section 501(c)(3) organization or a section 4947(a)(1) nonexempt charitable trust.
▶ Attach to Form 990 or Form 990-EZ.
▶ Go to www.irs.gov/Form990 for instructions and the latest information.

OMB No. 1545-0047

2019

Open to Public Inspection

Name of the organization

CHC: CREATING HEALTHIER COMMUNITIES

Employer identification number

13-6167225

Part I Reason for Public Charity Status (All organizations must complete this part.) See instructions.

The organization is not a private foundation because it is: (For lines 1 through 12, check only one box.)

- 1 A church, convention of churches, or association of churches described in **section 170(b)(1)(A)(i)**.
- 2 A school described in **section 170(b)(1)(A)(ii)**. (Attach Schedule E (Form 990 or 990-EZ).)
- 3 A hospital or a cooperative hospital service organization described in **section 170(b)(1)(A)(iii)**.
- 4 A medical research organization operated in conjunction with a hospital described in **section 170(b)(1)(A)(iii)**. Enter the hospital's name, city, and state: _____
- 5 An organization operated for the benefit of a college or university owned or operated by a governmental unit described in **section 170(b)(1)(A)(iv)**. (Complete Part II.)
- 6 A federal, state, or local government or governmental unit described in **section 170(b)(1)(A)(v)**.
- 7 An organization that normally receives a substantial part of its support from a governmental unit or from the general public described in **section 170(b)(1)(A)(vi)**. (Complete Part II.)
- 8 A community trust described in **section 170(b)(1)(A)(vi)**. (Complete Part II.)
- 9 An agricultural research organization described in **section 170(b)(1)(A)(ix)** operated in conjunction with a land-grant college or university or a non-land-grant college of agriculture (see instructions). Enter the name, city, and state of the college or university: _____
- 10 An organization that normally receives: (1) more than 33 1/3% of its support from contributions, membership fees, and gross receipts from activities related to its exempt functions - subject to certain exceptions, and (2) no more than 33 1/3% of its support from gross investment income and unrelated business taxable income (less section 511 tax) from businesses acquired by the organization after June 30, 1975. See **section 509(a)(2)**. (Complete Part III.)
- 11 An organization organized and operated exclusively to test for public safety. See **section 509(a)(4)**.
- 12 An organization organized and operated exclusively for the benefit of, to perform the functions of, or to carry out the purposes of one or more publicly supported organizations described in **section 509(a)(1)** or **section 509(a)(2)**. See **section 509(a)(3)**. Check the box in lines 12a through 12d that describes the type of supporting organization and complete lines 12e, 12f, and 12g.
 - a **Type I.** A supporting organization operated, supervised, or controlled by its supported organization(s), typically by giving the supported organization(s) the power to regularly appoint or elect a majority of the directors or trustees of the supporting organization. **You must complete Part IV, Sections A and B.**
 - b **Type II.** A supporting organization supervised or controlled in connection with its supported organization(s), by having control or management of the supporting organization vested in the same persons that control or manage the supported organization(s). **You must complete Part IV, Sections A and C.**
 - c **Type III functionally integrated.** A supporting organization operated in connection with, and functionally integrated with, its supported organization(s) (see instructions). **You must complete Part IV, Sections A, D, and E.**
 - d **Type III non-functionally integrated.** A supporting organization operated in connection with its supported organization(s) that is not functionally integrated. The organization generally must satisfy a distribution requirement and an attentiveness requirement (see instructions). **You must complete Part IV, Sections A and D, and Part V.**
 - e Check this box if the organization received a written determination from the IRS that it is a Type I, Type II, Type III functionally integrated, or Type III non-functionally integrated supporting organization.
- f Enter the number of supported organizations _____

g Provide the following information about the supported organization(s).

(i) Name of supported organization	(ii) EIN	(iii) Type of organization (described on lines 1-10 above (see instructions))	(iv) Is the organization listed in your governing document?		(v) Amount of monetary support (see instructions)	(vi) Amount of other support (see instructions)
			Yes	No		
Total						

Part II Support Schedule for Organizations Described in Sections 170(b)(1)(A)(iv) and 170(b)(1)(A)(vi)

(Complete only if you checked the box on line 5, 7, or 8 of Part I or if the organization failed to qualify under Part III. If the organization fails to qualify under the tests listed below, please complete Part III.)

Section A. Public Support

Calendar year (or fiscal year beginning in) ▶	(a) 2015	(b) 2016	(c) 2017	(d) 2018	(e) 2019	(f) Total
1 Gifts, grants, contributions, and membership fees received. (Do not include any "unusual grants.")	35,497,186.	33,135,957.	27,020,688.	21,322,342.	21,768,194.	138,744,367.
2 Tax revenues levied for the organization's benefit and either paid to or expended on its behalf						
3 The value of services or facilities furnished by a governmental unit to the organization without charge						
4 Total. Add lines 1 through 3	35,497,186.	33,135,957.	27,020,688.	21,322,342.	21,768,194.	138,744,367.
5 The portion of total contributions by each person (other than a governmental unit or publicly supported organization) included on line 1 that exceeds 2% of the amount shown on line 11, column (f)						
6 Public support. Subtract line 5 from line 4.						138,744,367.

Section B. Total Support

Calendar year (or fiscal year beginning in) ▶	(a) 2015	(b) 2016	(c) 2017	(d) 2018	(e) 2019	(f) Total
7 Amounts from line 4	35,497,186.	33,135,957.	27,020,688.	21,322,342.	21,768,194.	138,744,367.
8 Gross income from interest, dividends, payments received on securities loans, rents, royalties, and income from similar sources	58,658.	77,122.	88,612.	74,501.	71,735.	370,628.
9 Net income from unrelated business activities, whether or not the business is regularly carried on						
10 Other income. Do not include gain or loss from the sale of capital assets (Explain in Part VI.)						
11 Total support. Add lines 7 through 10						139,114,995.

12 Gross receipts from related activities, etc. (see instructions) **12** 4,741,926.

13 First five years. If the Form 990 is for the organization's first, second, third, fourth, or fifth tax year as a section 501(c)(3) organization, check this box and **stop here**

Section C. Computation of Public Support Percentage

14 Public support percentage for 2019 (line 6, column (f) divided by line 11, column (f)) **14** 99.73 %

15 Public support percentage from 2018 Schedule A, Part II, line 14 **15** 99.78 %

16a 33 1/3% support test - 2019. If the organization did not check the box on line 13, and line 14 is 33 1/3% or more, check this box and **stop here.** The organization qualifies as a publicly supported organization

b 33 1/3% support test - 2018. If the organization did not check a box on line 13 or 16a, and line 15 is 33 1/3% or more, check this box and **stop here.** The organization qualifies as a publicly supported organization

17a 10% -facts-and-circumstances test - 2019. If the organization did not check a box on line 13, 16a, or 16b, and line 14 is 10% or more, and if the organization meets the "facts-and-circumstances" test, check this box and **stop here.** Explain in Part VI how the organization meets the "facts-and-circumstances" test. The organization qualifies as a publicly supported organization

b 10% -facts-and-circumstances test - 2018. If the organization did not check a box on line 13, 16a, 16b, or 17a, and line 15 is 10% or more, and if the organization meets the "facts-and-circumstances" test, check this box and **stop here.** Explain in Part VI how the organization meets the "facts-and-circumstances" test. The organization qualifies as a publicly supported organization

18 Private foundation. If the organization did not check a box on line 13, 16a, 16b, 17a, or 17b, check this box and see instructions

Part III Support Schedule for Organizations Described in Section 509(a)(2)

(Complete only if you checked the box on line 10 of Part I or if the organization failed to qualify under Part II. If the organization fails to qualify under the tests listed below, please complete Part II.)

Section A. Public Support

Calendar year (or fiscal year beginning in) ▶	(a) 2015	(b) 2016	(c) 2017	(d) 2018	(e) 2019	(f) Total
1 Gifts, grants, contributions, and membership fees received. (Do not include any "unusual grants.")						
2 Gross receipts from admissions, merchandise sold or services performed, or facilities furnished in any activity that is related to the organization's tax-exempt purpose						
3 Gross receipts from activities that are not an unrelated trade or business under section 513						
4 Tax revenues levied for the organization's benefit and either paid to or expended on its behalf						
5 The value of services or facilities furnished by a governmental unit to the organization without charge						
6 Total. Add lines 1 through 5						
7a Amounts included on lines 1, 2, and 3 received from disqualified persons						
b Amounts included on lines 2 and 3 received from other than disqualified persons that exceed the greater of \$5,000 or 1% of the amount on line 13 for the year						
c Add lines 7a and 7b						
8 Public support. (Subtract line 7c from line 6)						

Section B. Total Support

Calendar year (or fiscal year beginning in) ▶	(a) 2015	(b) 2016	(c) 2017	(d) 2018	(e) 2019	(f) Total
9 Amounts from line 6						
10a Gross income from interest, dividends, payments received on securities loans, rents, royalties, and income from similar sources						
b Unrelated business taxable income (less section 511 taxes) from businesses acquired after June 30, 1975						
c Add lines 10a and 10b						
11 Net income from unrelated business activities not included in line 10b, whether or not the business is regularly carried on						
12 Other income. Do not include gain or loss from the sale of capital assets (Explain in Part VI.)						
13 Total support. (Add lines 9, 10c, 11, and 12.)						

14 First five years. If the Form 990 is for the organization's first, second, third, fourth, or fifth tax year as a section 501(c)(3) organization, check this box and **stop here**

Section C. Computation of Public Support Percentage

15 Public support percentage for 2019 (line 8, column (f), divided by line 13, column (f))	15	%
16 Public support percentage from 2018 Schedule A, Part III, line 15	16	%

Section D. Computation of Investment Income Percentage

17 Investment income percentage for 2019 (line 10c, column (f), divided by line 13, column (f))	17	%
18 Investment income percentage from 2018 Schedule A, Part III, line 17	18	%

19a 33 1/3% support tests - 2019. If the organization did not check the box on line 14, and line 15 is more than 33 1/3%, and line 17 is not more than 33 1/3%, check this box and **stop here.** The organization qualifies as a publicly supported organization

b 33 1/3% support tests - 2018. If the organization did not check a box on line 14 or line 19a, and line 16 is more than 33 1/3%, and line 18 is not more than 33 1/3%, check this box and **stop here.** The organization qualifies as a publicly supported organization

20 Private foundation. If the organization did not check a box on line 14, 19a, or 19b, check this box and see instructions

Part IV Supporting Organizations

(Complete only if you checked a box in line 12 on Part I. If you checked 12a of Part I, complete Sections A and B. If you checked 12b of Part I, complete Sections A and C. If you checked 12c of Part I, complete Sections A, D, and E. If you checked 12d of Part I, complete Sections A and D, and complete Part V.)

Section A. All Supporting Organizations

	Yes	No
1 Are all of the organization's supported organizations listed by name in the organization's governing documents? If "No," describe in Part VI how the supported organizations are designated. If designated by class or purpose, describe the designation. If historic and continuing relationship, explain.		
2 Did the organization have any supported organization that does not have an IRS determination of status under section 509(a)(1) or (2)? If "Yes," explain in Part VI how the organization determined that the supported organization was described in section 509(a)(1) or (2).		
3a Did the organization have a supported organization described in section 501(c)(4), (5), or (6)? If "Yes," answer (b) and (c) below.		
b Did the organization confirm that each supported organization qualified under section 501(c)(4), (5), or (6) and satisfied the public support tests under section 509(a)(2)? If "Yes," describe in Part VI when and how the organization made the determination.		
c Did the organization ensure that all support to such organizations was used exclusively for section 170(c)(2)(B) purposes? If "Yes," explain in Part VI what controls the organization put in place to ensure such use.		
4a Was any supported organization not organized in the United States ("foreign supported organization")? If "Yes," and if you checked 12a or 12b in Part I, answer (b) and (c) below.		
b Did the organization have ultimate control and discretion in deciding whether to make grants to the foreign supported organization? If "Yes," describe in Part VI how the organization had such control and discretion despite being controlled or supervised by or in connection with its supported organizations.		
c Did the organization support any foreign supported organization that does not have an IRS determination under sections 501(c)(3) and 509(a)(1) or (2)? If "Yes," explain in Part VI what controls the organization used to ensure that all support to the foreign supported organization was used exclusively for section 170(c)(2)(B) purposes.		
5a Did the organization add, substitute, or remove any supported organizations during the tax year? If "Yes," answer (b) and (c) below (if applicable). Also, provide detail in Part VI , including (i) the names and EIN numbers of the supported organizations added, substituted, or removed; (ii) the reasons for each such action; (iii) the authority under the organization's organizing document authorizing such action; and (iv) how the action was accomplished (such as by amendment to the organizing document).		
b Type I or Type II only. Was any added or substituted supported organization part of a class already designated in the organization's organizing document?		
c Substitutions only. Was the substitution the result of an event beyond the organization's control?		
6 Did the organization provide support (whether in the form of grants or the provision of services or facilities) to anyone other than (i) its supported organizations, (ii) individuals that are part of the charitable class benefited by one or more of its supported organizations, or (iii) other supporting organizations that also support or benefit one or more of the filing organization's supported organizations? If "Yes," provide detail in Part VI .		
7 Did the organization provide a grant, loan, compensation, or other similar payment to a substantial contributor (as defined in section 4958(c)(3)(C)), a family member of a substantial contributor, or a 35% controlled entity with regard to a substantial contributor? If "Yes," complete Part I of Schedule L (Form 990 or 990-EZ).		
8 Did the organization make a loan to a disqualified person (as defined in section 4958) not described in line 7? If "Yes," complete Part I of Schedule L (Form 990 or 990-EZ).		
9a Was the organization controlled directly or indirectly at any time during the tax year by one or more disqualified persons as defined in section 4946 (other than foundation managers and organizations described in section 509(a)(1) or (2))? If "Yes," provide detail in Part VI .		
b Did one or more disqualified persons (as defined in line 9a) hold a controlling interest in any entity in which the supporting organization had an interest? If "Yes," provide detail in Part VI .		
c Did a disqualified person (as defined in line 9a) have an ownership interest in, or derive any personal benefit from, assets in which the supporting organization also had an interest? If "Yes," provide detail in Part VI .		
10a Was the organization subject to the excess business holdings rules of section 4943 because of section 4943(f) (regarding certain Type II supporting organizations, and all Type III non-functionally integrated supporting organizations)? If "Yes," answer 10b below.		
b Did the organization have any excess business holdings in the tax year? (Use Schedule C, Form 4720, to determine whether the organization had excess business holdings.)		

Part IV Supporting Organizations *(continued)*

	Yes	No
11 Has the organization accepted a gift or contribution from any of the following persons?		
a A person who directly or indirectly controls, either alone or together with persons described in (b) and (c) below, the governing body of a supported organization?		
b A family member of a person described in (a) above?		
c A 35% controlled entity of a person described in (a) or (b) above? <i>If "Yes" to a, b, or c, provide detail in Part VI.</i>		

Section B. Type I Supporting Organizations

	Yes	No
1 Did the directors, trustees, or membership of one or more supported organizations have the power to regularly appoint or elect at least a majority of the organization's directors or trustees at all times during the tax year? <i>If "No," describe in Part VI how the supported organization(s) effectively operated, supervised, or controlled the organization's activities. If the organization had more than one supported organization, describe how the powers to appoint and/or remove directors or trustees were allocated among the supported organizations and what conditions or restrictions, if any, applied to such powers during the tax year.</i>		
2 Did the organization operate for the benefit of any supported organization other than the supported organization(s) that operated, supervised, or controlled the supporting organization? <i>If "Yes," explain in Part VI how providing such benefit carried out the purposes of the supported organization(s) that operated, supervised, or controlled the supporting organization.</i>		

Section C. Type II Supporting Organizations

	Yes	No
1 Were a majority of the organization's directors or trustees during the tax year also a majority of the directors or trustees of each of the organization's supported organization(s)? <i>If "No," describe in Part VI how control or management of the supporting organization was vested in the same persons that controlled or managed the supported organization(s).</i>		

Section D. All Type III Supporting Organizations

	Yes	No
1 Did the organization provide to each of its supported organizations, by the last day of the fifth month of the organization's tax year, (i) a written notice describing the type and amount of support provided during the prior tax year, (ii) a copy of the Form 990 that was most recently filed as of the date of notification, and (iii) copies of the organization's governing documents in effect on the date of notification, to the extent not previously provided?		
2 Were any of the organization's officers, directors, or trustees either (i) appointed or elected by the supported organization(s) or (ii) serving on the governing body of a supported organization? <i>If "No," explain in Part VI how the organization maintained a close and continuous working relationship with the supported organization(s).</i>		
3 By reason of the relationship described in (2), did the organization's supported organizations have a significant voice in the organization's investment policies and in directing the use of the organization's income or assets at all times during the tax year? <i>If "Yes," describe in Part VI the role the organization's supported organizations played in this regard.</i>		

Section E. Type III Functionally Integrated Supporting Organizations

1 Check the box next to the method that the organization used to satisfy the Integral Part Test during the year (see instructions).		
a <input type="checkbox"/> The organization satisfied the Activities Test. Complete line 2 below.		
b <input type="checkbox"/> The organization is the parent of each of its supported organizations. Complete line 3 below.		
c <input type="checkbox"/> The organization supported a governmental entity. Describe in Part VI how you supported a government entity (see instructions).		
2 Activities Test. Answer (a) and (b) below.		
a Did substantially all of the organization's activities during the tax year directly further the exempt purposes of the supported organization(s) to which the organization was responsive? <i>If "Yes," then in Part VI identify those supported organizations and explain how these activities directly furthered their exempt purposes, how the organization was responsive to those supported organizations, and how the organization determined that these activities constituted substantially all of its activities.</i>		
b Did the activities described in (a) constitute activities that, but for the organization's involvement, one or more of the organization's supported organization(s) would have been engaged in? <i>If "Yes," explain in Part VI the reasons for the organization's position that its supported organization(s) would have engaged in these activities but for the organization's involvement.</i>		
3 Parent of Supported Organizations. Answer (a) and (b) below.		
a Did the organization have the power to regularly appoint or elect a majority of the officers, directors, or trustees of each of the supported organizations? <i>Provide details in Part VI.</i>		
b Did the organization exercise a substantial degree of direction over the policies, programs, and activities of each of its supported organizations? <i>If "Yes," describe in Part VI the role played by the organization in this regard.</i>		

Part V Type III Non-Functionally Integrated 509(a)(3) Supporting Organizations

1 Check here if the organization satisfied the Integral Part Test as a qualifying trust on Nov. 20, 1970 (explain in Part VI). See instructions. All other Type III non-functionally integrated supporting organizations must complete Sections A through E.

Section A - Adjusted Net Income		(A) Prior Year	(B) Current Year (optional)
1	Net short-term capital gain	1	
2	Recoveries of prior-year distributions	2	
3	Other gross income (see instructions)	3	
4	Add lines 1 through 3.	4	
5	Depreciation and depletion	5	
6	Portion of operating expenses paid or incurred for production or collection of gross income or for management, conservation, or maintenance of property held for production of income (see instructions)	6	
7	Other expenses (see instructions)	7	
8	Adjusted Net Income (subtract lines 5, 6, and 7 from line 4)	8	

Section B - Minimum Asset Amount		(A) Prior Year	(B) Current Year (optional)
1	Aggregate fair market value of all non-exempt-use assets (see instructions for short tax year or assets held for part of year):		
a	Average monthly value of securities	1a	
b	Average monthly cash balances	1b	
c	Fair market value of other non-exempt-use assets	1c	
d	Total (add lines 1a, 1b, and 1c)	1d	
e	Discount claimed for blockage or other factors (explain in detail in Part VI):		
2	Acquisition indebtedness applicable to non-exempt-use assets	2	
3	Subtract line 2 from line 1d.	3	
4	Cash deemed held for exempt use. Enter 1-1/2% of line 3 (for greater amount, see instructions).	4	
5	Net value of non-exempt-use assets (subtract line 4 from line 3)	5	
6	Multiply line 5 by .035.	6	
7	Recoveries of prior-year distributions	7	
8	Minimum Asset Amount (add line 7 to line 6)	8	

Section C - Distributable Amount			Current Year
1	Adjusted net income for prior year (from Section A, line 8, Column A)	1	
2	Enter 85% of line 1.	2	
3	Minimum asset amount for prior year (from Section B, line 8, Column A)	3	
4	Enter greater of line 2 or line 3.	4	
5	Income tax imposed in prior year	5	
6	Distributable Amount. Subtract line 5 from line 4, unless subject to emergency temporary reduction (see instructions).	6	

7 Check here if the current year is the organization's first as a non-functionally integrated Type III supporting organization (see instructions).

Part V Type III Non-Functionally Integrated 509(a)(3) Supporting Organizations (continued)

Section D - Distributions	Current Year
1 Amounts paid to supported organizations to accomplish exempt purposes	
2 Amounts paid to perform activity that directly furthers exempt purposes of supported organizations, in excess of income from activity	
3 Administrative expenses paid to accomplish exempt purposes of supported organizations	
4 Amounts paid to acquire exempt-use assets	
5 Qualified set-aside amounts (prior IRS approval required)	
6 Other distributions (describe in Part VI). See instructions.	
7 Total annual distributions. Add lines 1 through 6.	
8 Distributions to attentive supported organizations to which the organization is responsive (provide details in Part VI). See instructions.	
9 Distributable amount for 2019 from Section C, line 6	
10 Line 8 amount divided by line 9 amount	

Section E - Distribution Allocations (see instructions)	(i) Excess Distributions	(ii) Underdistributions Pre-2019	(iii) Distributable Amount for 2019
1 Distributable amount for 2019 from Section C, line 6			
2 Underdistributions, if any, for years prior to 2019 (reasonable cause required- explain in Part VI). See instructions.			
3 Excess distributions carryover, if any, to 2019			
a From 2014			
b From 2015			
c From 2016			
d From 2017			
e From 2018			
f Total of lines 3a through e			
g Applied to underdistributions of prior years			
h Applied to 2019 distributable amount			
i Carryover from 2014 not applied (see instructions)			
j Remainder. Subtract lines 3g, 3h, and 3i from 3f.			
4 Distributions for 2019 from Section D, line 7: \$			
a Applied to underdistributions of prior years			
b Applied to 2019 distributable amount			
c Remainder. Subtract lines 4a and 4b from 4.			
5 Remaining underdistributions for years prior to 2019, if any. Subtract lines 3g and 4a from line 2. For result greater than zero, explain in Part VI. See instructions.			
6 Remaining underdistributions for 2019. Subtract lines 3h and 4b from line 1. For result greater than zero, explain in Part VI. See instructions.			
7 Excess distributions carryover to 2020. Add lines 3j and 4c.			
8 Breakdown of line 7:			
a Excess from 2015			
b Excess from 2016			
c Excess from 2017			
d Excess from 2018			
e Excess from 2019			

Schedule B

(Form 990, 990-EZ, or 990-PF)

Department of the Treasury
Internal Revenue Service

Schedule of Contributors

▶ Attach to Form 990, Form 990-EZ, or Form 990-PF.
▶ Go to www.irs.gov/Form990 for the latest information.

OMB No. 1545-0047

2019

Name of the organization

CHC: CREATING HEALTHIER COMMUNITIES

Employer identification number

13-6167225

Organization type (check one):

Filers of:

Section:

Form 990 or 990-EZ

501(c)(3) (enter number) organization

4947(a)(1) nonexempt charitable trust **not** treated as a private foundation

527 political organization

Form 990-PF

501(c)(3) exempt private foundation

4947(a)(1) nonexempt charitable trust treated as a private foundation

501(c)(3) taxable private foundation

Check if your organization is covered by the **General Rule** or a **Special Rule**.

Note: Only a section 501(c)(7), (8), or (10) organization can check boxes for both the General Rule and a Special Rule. See instructions.

General Rule

For an organization filing Form 990, 990-EZ, or 990-PF that received, during the year, contributions totaling \$5,000 or more (in money or property) from any one contributor. Complete Parts I and II. See instructions for determining a contributor's total contributions.

Special Rules

For an organization described in section 501(c)(3) filing Form 990 or 990-EZ that met the 33 1/3% support test of the regulations under sections 509(a)(1) and 170(b)(1)(A)(vi), that checked Schedule A (Form 990 or 990-EZ), Part II, line 13, 16a, or 16b, and that received from any one contributor, during the year, total contributions of the greater of (1) \$5,000; or (2) 2% of the amount on (i) Form 990, Part VIII, line 1h; or (ii) Form 990-EZ, line 1. Complete Parts I and II.

For an organization described in section 501(c)(7), (8), or (10) filing Form 990 or 990-EZ that received from any one contributor, during the year, total contributions of more than \$1,000 *exclusively* for religious, charitable, scientific, literary, or educational purposes, or for the prevention of cruelty to children or animals. Complete Parts I, II, and III.

For an organization described in section 501(c)(7), (8), or (10) filing Form 990 or 990-EZ that received from any one contributor, during the year, contributions *exclusively* for religious, charitable, etc., purposes, but no such contributions totaled more than \$1,000. If this box is checked, enter here the total contributions that were received during the year for an *exclusively* religious, charitable, etc., purpose. Don't complete any of the parts unless the **General Rule** applies to this organization because it received *nonexclusively* religious, charitable, etc., contributions totaling \$5,000 or more during the year ▶ \$ _____

Caution: An organization that isn't covered by the General Rule and/or the Special Rules doesn't file Schedule B (Form 990, 990-EZ, or 990-PF), but it **must** answer "No" on Part IV, line 2, of its Form 990; or check the box on line H of its Form 990-EZ or on its Form 990-PF, Part I, line 2, to certify that it doesn't meet the filing requirements of Schedule B (Form 990, 990-EZ, or 990-PF).

Name of organization

Employer identification number

CHC: CREATING HEALTHIER COMMUNITIES

13-6167225

Part I Contributors (see instructions). Use duplicate copies of Part I if additional space is needed.

(a) No.	(b) Name, address, and ZIP + 4	(c) Total contributions	(d) Type of contribution
1		\$ 473,617.	Person <input type="checkbox"/> Payroll <input checked="" type="checkbox"/> Noncash <input type="checkbox"/> (Complete Part II for noncash contributions.)
2		\$ 489,786.	Person <input type="checkbox"/> Payroll <input checked="" type="checkbox"/> Noncash <input type="checkbox"/> (Complete Part II for noncash contributions.)
3		\$ 1,318,766.	Person <input type="checkbox"/> Payroll <input checked="" type="checkbox"/> Noncash <input type="checkbox"/> (Complete Part II for noncash contributions.)
4		\$ 692,829.	Person <input type="checkbox"/> Payroll <input checked="" type="checkbox"/> Noncash <input type="checkbox"/> (Complete Part II for noncash contributions.)
5		\$ 756,738.	Person <input checked="" type="checkbox"/> Payroll <input type="checkbox"/> Noncash <input type="checkbox"/> (Complete Part II for noncash contributions.)
		\$	Person <input type="checkbox"/> Payroll <input type="checkbox"/> Noncash <input type="checkbox"/> (Complete Part II for noncash contributions.)

Name of organization

Employer identification number

CHC: CREATING HEALTHIER COMMUNITIES

13-6167225

Part II Noncash Property (see instructions). Use duplicate copies of Part II if additional space is needed.

(a) No. from Part I	(b) Description of noncash property given	(c) FMV (or estimate) (See instructions.)	(d) Date received
_____	_____ _____ _____	\$ _____	_____
_____	_____ _____ _____	\$ _____	_____
_____	_____ _____ _____	\$ _____	_____
_____	_____ _____ _____	\$ _____	_____
_____	_____ _____ _____	\$ _____	_____
_____	_____ _____ _____	\$ _____	_____
_____	_____ _____ _____	\$ _____	_____

Name of organization	Employer identification number
CHC: CREATING HEALTHIER COMMUNITIES	13-6167225

Part III Exclusively religious, charitable, etc., contributions to organizations described in section 501(c)(7), (8), or (10) that total more than \$1,000 for the year from any one contributor. Complete columns (a) through (e) and the following line entry. For organizations completing Part III, enter the total of exclusively religious, charitable, etc., contributions of \$1,000 or less for the year. (Enter this info. once.) ▶ \$ _____
 Use duplicate copies of Part III if additional space is needed.

(a) No. from Part I	(b) Purpose of gift	(c) Use of gift	(d) Description of how gift is held

(e) Transfer of gift	
Transferee's name, address, and ZIP + 4	Relationship of transferor to transferee

(a) No. from Part I	(b) Purpose of gift	(c) Use of gift	(d) Description of how gift is held

(e) Transfer of gift	
Transferee's name, address, and ZIP + 4	Relationship of transferor to transferee

(a) No. from Part I	(b) Purpose of gift	(c) Use of gift	(d) Description of how gift is held

(e) Transfer of gift	
Transferee's name, address, and ZIP + 4	Relationship of transferor to transferee

(a) No. from Part I	(b) Purpose of gift	(c) Use of gift	(d) Description of how gift is held

(e) Transfer of gift	
Transferee's name, address, and ZIP + 4	Relationship of transferor to transferee

SCHEDULE D (Form 990)

Department of the Treasury Internal Revenue Service

Supplemental Financial Statements

Complete if the organization answered "Yes" on Form 990, Part IV, line 6, 7, 8, 9, 10, 11a, 11b, 11c, 11d, 11e, 11f, 12a, or 12b. Attach to Form 990.

Go to www.irs.gov/Form990 for instructions and the latest information.

OMB No. 1545-0047

2019

Open to Public Inspection

Name of the organization

CHC: CREATING HEALTHIER COMMUNITIES

Employer identification number

13-6167225

Part I Organizations Maintaining Donor Advised Funds or Other Similar Funds or Accounts. Complete if the organization answered "Yes" on Form 990, Part IV, line 6.

Table with 3 columns: Question, (a) Donor advised funds, (b) Funds and other accounts. Rows include total number at end of year, aggregate value of contributions, grants, and end of year, and questions about donor advisement and private benefit.

Part II Conservation Easements. Complete if the organization answered "Yes" on Form 990, Part IV, line 7.

Form for Part II Conservation Easements. Includes checkboxes for types of easements, a table for 'Held at the End of the Tax Year' with rows 2a-2d, and questions about monitoring, expenses, and reporting.

Part III Organizations Maintaining Collections of Art, Historical Treasures, or Other Similar Assets.

Complete if the organization answered "Yes" on Form 990, Part IV, line 8.

Form for Part III Organizations Maintaining Collections of Art, Historical Treasures, or Other Similar Assets. Includes questions about reporting and amounts for revenue and assets.

Part III Organizations Maintaining Collections of Art, Historical Treasures, or Other Similar Assets (continued)

- 3 Using the organization's acquisition, accession, and other records, check any of the following that make significant use of its collection items (check all that apply):
- a Public exhibition
 - b Scholarly research
 - c Preservation for future generations
 - d Loan or exchange program
 - e Other _____
- 4 Provide a description of the organization's collections and explain how they further the organization's exempt purpose in Part XIII.
- 5 During the year, did the organization solicit or receive donations of art, historical treasures, or other similar assets to be sold to raise funds rather than to be maintained as part of the organization's collection? Yes No

Part IV Escrow and Custodial Arrangements. Complete if the organization answered "Yes" on Form 990, Part IV, line 9, or reported an amount on Form 990, Part X, line 21.

- 1a Is the organization an agent, trustee, custodian or other intermediary for contributions or other assets not included on Form 990, Part X? Yes No
- b If "Yes," explain the arrangement in Part XIII and complete the following table:
- | | Amount |
|---------------------------------|--------|
| c Beginning balance | 1c |
| d Additions during the year | 1d |
| e Distributions during the year | 1e |
| f Ending balance | 1f |
- 2a Did the organization include an amount on Form 990, Part X, line 21, for escrow or custodial account liability? Yes No
- b If "Yes," explain the arrangement in Part XIII. Check here if the explanation has been provided on Part XIII

Part V Endowment Funds. Complete if the organization answered "Yes" on Form 990, Part IV, line 10.

	(a) Current year	(b) Prior year	(c) Two years back	(d) Three years back	(e) Four years back
1a Beginning of year balance					
b Contributions					
c Net investment earnings, gains, and losses					
d Grants or scholarships					
e Other expenditures for facilities and programs					
f Administrative expenses					
g End of year balance					

- 2 Provide the estimated percentage of the current year end balance (line 1g, column (a)) held as:
- a Board designated or quasi-endowment _____ %
 - b Permanent endowment _____ %
 - c Term endowment _____ %
- The percentages on lines 2a, 2b, and 2c should equal 100%.
- 3a Are there endowment funds not in the possession of the organization that are held and administered for the organization by:
- | | Yes | No |
|--|--------|----|
| (i) Unrelated organizations | 3a(i) | |
| (ii) Related organizations | 3a(ii) | |
| b If "Yes" on line 3a(ii), are the related organizations listed as required on Schedule R? | 3b | |
- 4 Describe in Part XIII the intended uses of the organization's endowment funds.

Part VI Land, Buildings, and Equipment.

Complete if the organization answered "Yes" on Form 990, Part IV, line 11a. See Form 990, Part X, line 10.

Description of property	(a) Cost or other basis (investment)	(b) Cost or other basis (other)	(c) Accumulated depreciation	(d) Book value
1a Land				
b Buildings				
c Leasehold improvements				
d Equipment		112,977.	76,355.	36,622.
e Other				
Total. Add lines 1a through 1e. (Column (d) must equal Form 990, Part X, column (B), line 10c.)				36,622.

Part VII Investments - Other Securities.

Complete if the organization answered "Yes" on Form 990, Part IV, line 11b. See Form 990, Part X, line 12.

(a) Description of security or category (including name of security)	(b) Book value	(c) Method of valuation: Cost or end-of-year market value
(1) Financial derivatives		
(2) Closely held equity interests		
(3) Other		
(A)		
(B)		
(C)		
(D)		
(E)		
(F)		
(G)		
(H)		
Total. (Col. (b) must equal Form 990, Part X, col. (B) line 12.) ▶		

Part VIII Investments - Program Related.

Complete if the organization answered "Yes" on Form 990, Part IV, line 11c. See Form 990, Part X, line 13.

(a) Description of investment	(b) Book value	(c) Method of valuation: Cost or end-of-year market value
(1)		
(2)		
(3)		
(4)		
(5)		
(6)		
(7)		
(8)		
(9)		
Total. (Col. (b) must equal Form 990, Part X, col. (B) line 13.) ▶		

Part IX Other Assets.

Complete if the organization answered "Yes" on Form 990, Part IV, line 11d. See Form 990, Part X, line 15.

(a) Description	(b) Book value
(1)	
(2)	
(3)	
(4)	
(5)	
(6)	
(7)	
(8)	
(9)	
Total. (Column (b) must equal Form 990, Part X, col. (B) line 15.) ▶	

Part X Other Liabilities.

Complete if the organization answered "Yes" on Form 990, Part IV, line 11e or 11f. See Form 990, Part X, line 25.

1. (a) Description of liability	(b) Book value
(1) Federal income taxes	
(2)	
(3)	
(4)	
(5)	
(6)	
(7)	
(8)	
(9)	
Total. (Column (b) must equal Form 990, Part X, col. (B) line 25.) ▶	

2. Liability for uncertain tax positions. In Part XIII, provide the text of the footnote to the organization's financial statements that reports the organization's liability for uncertain tax positions under FASB ASC 740. Check here if the text of the footnote has been provided in Part XIII

Part XI Reconciliation of Revenue per Audited Financial Statements With Revenue per Return.

Complete if the organization answered "Yes" on Form 990, Part IV, line 12a.

1	Total revenue, gains, and other support per audited financial statements	1	6,184,242.
2	Amounts included on line 1 but not on Form 990, Part VIII, line 12:		
a	Net unrealized gains (losses) on investments	2a	<620.>
b	Donated services and use of facilities	2b	
c	Recoveries of prior year grants	2c	
d	Other (Describe in Part XIII.)	2d	<1,009,695.>
e	Add lines 2a through 2d	2e	<1,010,315.>
3	Subtract line 2e from line 1	3	7,194,557.
4	Amounts included on Form 990, Part VIII, line 12, but not on line 1:		
a	Investment expenses not included on Form 990, Part VIII, line 7b	4a	9,198.
b	Other (Describe in Part XIII.)	4b	15,359,737.
c	Add lines 4a and 4b	4c	15,368,935.
5	Total revenue. Add lines 3 and 4c. (This must equal Form 990, Part I, line 12.)	5	22,563,492.

Part XII Reconciliation of Expenses per Audited Financial Statements With Expenses per Return.

Complete if the organization answered "Yes" on Form 990, Part IV, line 12a.

1	Total expenses and losses per audited financial statements	1	6,243,557.
2	Amounts included on line 1 but not on Form 990, Part IX, line 25:		
a	Donated services and use of facilities	2a	
b	Prior year adjustments	2b	
c	Other losses	2c	
d	Other (Describe in Part XIII.)	2d	2,814.
e	Add lines 2a through 2d	2e	2,814.
3	Subtract line 2e from line 1	3	6,240,743.
4	Amounts included on Form 990, Part IX, line 25, but not on line 1:		
a	Investment expenses not included on Form 990, Part VIII, line 7b	4a	9,198.
b	Other (Describe in Part XIII.)	4b	15,359,737.
c	Add lines 4a and 4b	4c	15,368,935.
5	Total expenses. Add lines 3 and 4c. (This must equal Form 990, Part I, line 18.)	5	21,609,678.

Part XIII Supplemental Information.

Provide the descriptions required for Part II, lines 3, 5, and 9; Part III, lines 1a and 4; Part IV, lines 1b and 2b; Part V, line 4; Part X, line 2; Part XI, lines 2d and 4b; and Part XII, lines 2d and 4b. Also complete this part to provide any additional information.

PART X, LINE 2:

THE ORGANIZATION ACCOUNTS FOR THE EFFECT OF ANY UNCERTAIN TAX POSITIONS

BASED ON A "MORE LIKELY THAN NOT" THRESHOLD TO THE RECOGNITION OF THE TAX

POSITIONS BEING SUSTAINED BASED ON THE TECHNICAL MERITS OF THE POSITION

UNDER SCRUTINY BY THE APPLICABLE TAXING AUTHORITY. IF A TAX POSITION OR

POSITIONS ARE DEEMED TO RESULT IN UNCERTAINTIES OF THOSE POSITIONS, THE

UNRECOGNIZED TAX BENEFIT IS ESTIMATED BASED ON A "CUMULATIVE PROBABILITY

ASSESSMENT" THAT AGGREGATES THE ESTIMATED TAX LIABILITY FOR ALL UNCERTAIN

TAX POSITIONS. THE ORGANIZATION HAS IDENTIFIED ITS TAX STATUS AS A

TAX-EXEMPT ENTITY AS ITS ONLY SIGNIFICANT TAX POSITION; HOWEVER, THE

ORGANIZATION HAS DETERMINED THAT SUCH TAX POSITION DOES NOT RESULT IN AN

UNCERTAINTY REQUIRING RECOGNITION. THE ORGANIZATION IS NOT CURRENTLY UNDER

Part XIII Supplemental Information *(continued)*

EXAMINATION BY ANY TAXING JURISDICTION. THE ORGANIZATION'S FEDERAL AND STATE TAX RETURNS ARE GENERALLY OPEN FOR EXAMINATION FOR THREE YEARS FOLLOWING THE DATE FILED.

PART XI, LINE 2D - OTHER ADJUSTMENTS:

CONSOLIDATED GROUP/ELIMINATION ADJUSTMENT -1,009,695.

PART XI, LINE 4B - OTHER ADJUSTMENTS:

AMOUNTS DESIGNATED BY DONORS TO SPECIFIC MEMBER AGENCIES 15,361,838.

LOSS ON ASSET DISPOSITION -2,101.

TOTAL TO SCHEDULE D, PART XI, LINE 4B 15,359,737.

PART XII, LINE 2D - OTHER ADJUSTMENTS:

CONSOLIDATED GROUP/ELIMINATION ADJUSTMENT 2,814.

PART XII, LINE 4B - OTHER ADJUSTMENTS:

AMOUNTS DESIGNATED BY DONORS TO SPECIFIC MEMBER AGENCIES 15,361,838.

LOSS ON ASSET DISPOSITION -2,101.

TOTAL TO SCHEDULE D, PART XII, LINE 4B 15,359,737.

**SCHEDULE I
(Form 990)**

Department of the Treasury
Internal Revenue Service

**Grants and Other Assistance to Organizations,
Governments, and Individuals in the United States**
Complete if the organization answered "Yes" on Form 990, Part IV, line 21 or 22.

▶ Attach to Form 990.

▶ Go to www.irs.gov/Form990 for the latest information.

OMB No. 1545-0047

2019

**Open to Public
Inspection**

Name of the organization

CHC: CREATING HEALTHIER COMMUNITIES

Employer identification number

13-6167225

Part I General Information on Grants and Assistance

- 1** Does the organization maintain records to substantiate the amount of the grants or assistance, the grantees' eligibility for the grants or assistance, and the selection criteria used to award the grants or assistance? Yes No
- 2** Describe in Part IV the organization's procedures for monitoring the use of grant funds in the United States.

Part II Grants and Other Assistance to Domestic Organizations and Domestic Governments. Complete if the organization answered "Yes" on Form 990, Part IV, line 21, for any recipient that received more than \$5,000. Part II can be duplicated if additional space is needed.

1 (a) Name and address of organization or government	(b) EIN	(c) IRC section (if applicable)	(d) Amount of cash grant	(e) Amount of non-cash assistance	(f) Method of valuation (book, FMV, appraisal, other)	(g) Description of noncash assistance	(h) Purpose of grant or assistance
A KID AGAIN, OHIO, COLUMBUS 777 G DEARBORN PARK LN COLUMBUS, OH 43085	31-1440073	501(C)(3)	11,905.	0.			RESEARCH/PUBLIC EDUCATION
ABCD: AFTER BREAST CANCER DIAGNOSIS - 5775 N GLEN PARK STE 201 - GLENDALE, WI 53209	39-1967028	501(C)(3)	7,513.	0.			RESEARCH/PUBLIC EDUCATION
AIDS RESEARCH FOUNDATION (AMFAR) 120 WALL ST 13TH FL NEW YORK, NY 10005	13-3163817	501(C)(3)	58,035.	0.			RESEARCH/PUBLIC EDUCATION
ALLY'S HOUSE 308 W MAIN ST MOORE, OK 73160	20-0726554	501(C)(3)	13,283.	0.			RESEARCH/PUBLIC EDUCATION
ALS ASSOCIATION 1275 K ST NW STE 250 WASHINGTON, DC 20005	13-3271855	501(C)(3)	73,720.	0.			RESEARCH/PUBLIC EDUCATION
ALS ASSOCIATION, ARIZONA, ARIZONA CHAPTER, PHOENIX - 360 E. CORONADO RD., STE 140 - PHOENIX, AZ 85004	86-0727136	501(C)(3)	6,675.	0.			RESEARCH/PUBLIC EDUCATION

- 2** Enter total number of section 501(c)(3) and government organizations listed in the line 1 table ▶ 240.
- 3** Enter total number of other organizations listed in the line 1 table ▶ 0.

LHA For Paperwork Reduction Act Notice, see the Instructions for Form 990.

Schedule I (Form 990) (2019)

Part II Continuation of Grants and Other Assistance to Governments and Organizations in the United States (Schedule I (Form 990), Part II.)

(a) Name and address of organization or government	(b) EIN	(c) IRC section if applicable	(d) Amount of cash grant	(e) Amount of non-cash assistance	(f) Method of valuation (book, FMV, appraisal, other)	(g) Description of non-cash assistance	(h) Purpose of grant or assistance
ALS ASSOCIATION, CALIFORNIA, GOLDEN WEST CHAPTER, AGOURA HILLS - 28632 ROADSIDE DR., STE 173 - AGOURA HILLS, CA 91301	95-4163338	501(C)(3)	5,345.	0.			RESEARCH/PUBLIC EDUCATION
ALS ASSOCIATION, COLORADO, ROCKY MOUNTAIN CHAPTER, WESTMINSTER - 10855 DOVER ST., STE 500 - WESTMINSTER, CO 80021	84-1337868	501(C)(3)	6,919.	0.			RESEARCH/PUBLIC EDUCATION
ALS ASSOCIATION, MINNESOTA, MINNESOTA/ND/SD CHAPTER, MINNEAPOLIS - 1919 UNIVERSITY AVE., W. STE 175 - SAINT PAUL, MN	41-1756085	501(C)(3)	31,160.	0.			RESEARCH/PUBLIC EDUCATION
ALS ASSOCIATION, NEW YORK, GREATER NEW YORK CHAPTER, NEW YORK - 42 BROADWAY STE 1724 - NEW YORK, NY 10004	13-3616680	501(C)(3)	6,556.	0.			RESEARCH/PUBLIC EDUCATION
ALS ASSOCIATION, NORTH CAROLINA, NORTH CAROLINA CHAPTER, RALEIGH - 4 N BLOUNT ST., 2ND FL, STE 200 - RALEIGH, NC 27601	56-1609591	501(C)(3)	10,992.	0.			RESEARCH/PUBLIC EDUCATION
ALS ASSOCIATION, PENNSYLVANIA, GREATER PHILADELPHIA CHAPTER, AMBLER - 321 NORRISTOWN RD., STE 260 - AMBLER, PA 19002	23-2387205	501(C)(3)	19,390.	0.			RESEARCH/PUBLIC EDUCATION
ALS ASSOCIATION, WISCONSIN, WISCONSIN CHAPTER, WAUWATOSA - 3333 N. MAYFAIR RD., STE 104 - WAUWATOSA, WI 53222	39-1600965	501(C)(3)	17,806.	0.			RESEARCH/PUBLIC EDUCATION
ALZHEIMER'S & DEMENTIA ALLIANCE OF WISCONSIN - 3330 UNIVERSITY AVE., STE 300 - MADISON, WI 53705	39-1679333	501(C)(3)	34,905.	0.			RESEARCH/PUBLIC EDUCATION
ALZHEIMER'S ASSOCIATION 225 N MICHIGAN AVE., STE 1700 CHICAGO, IL 60601	13-3039601	501(C)(3)	718,410.	0.			RESEARCH/PUBLIC EDUCATION

Schedule I (Form 990)

Part II Continuation of Grants and Other Assistance to Governments and Organizations in the United States (Schedule I (Form 990), Part II.)							
(a) Name and address of organization or government	(b) EIN	(c) IRC section if applicable	(d) Amount of cash grant	(e) Amount of non-cash assistance	(f) Method of valuation (book, FMV, appraisal, other)	(g) Description of non-cash assistance	(h) Purpose of grant or assistance
ALZHEIMER'S NEW JERSEY 425 EAGLE ROCK AVE., STE 203 ROSELAND, NJ 07068	22-2603592	501(C)(3)	6,739.	0.			RESEARCH/PUBLIC EDUCATION
ALZHEIMER'S TEXAS 7719 WOOD HOLLOW DR., STE 157 AUSTIN, TX 78731	74-2286105	501(C)(3)	5,051.	0.			RESEARCH/PUBLIC EDUCATION
AMERICAN CANCER SOCIETY 250 WILLIAMS ST., NW. ATLANTA, GA 30303	13-1788491	501(C)(3)	1,125,479.	0.			RESEARCH/PUBLIC EDUCATION
AMERICAN DIABETES ASSOCIATION 2451 CRYSTAL DRIVE STE 900 ARLINGTON, VA 22202	13-1623888	501(C)(3)	395,714.	0.			RESEARCH/PUBLIC EDUCATION
AMERICAN HEART ASSOCIATION 7272 GREENVILLE AVE DALLAS, TX 75231	13-5613797	501(C)(3)	368,154.	0.			RESEARCH/PUBLIC EDUCATION
AMERICAN KIDNEY FUND 11921 ROCKVILLE PIKE STE 300 ROCKVILLE, MD 20852	23-7124261	501(C)(3)	57,164.	0.			RESEARCH/PUBLIC EDUCATION
AMERICAN LIVER FOUNDATION 39 BROADWAY STE 2700 NEW YORK, NY 10006	36-2883000	501(C)(3)	38,783.	0.			RESEARCH/PUBLIC EDUCATION
AMERICAN LUNG ASSOCIATION 55 W WACKER DR STE 1150 CHICAGO, IL 60601	13-1632524	501(C)(3)	124,366.	0.			RESEARCH/PUBLIC EDUCATION
AMERICAN PARKINSON DISEASE ASSOCIATION - 135 PARKINSON AVE - STATEN ISLAND, NY 10305	13-1962771	501(C)(3)	7,986.	0.			RESEARCH/PUBLIC EDUCATION

Schedule I (Form 990)

Part II Continuation of Grants and Other Assistance to Governments and Organizations in the United States (Schedule I (Form 990), Part II.)

(a) Name and address of organization or government	(b) EIN	(c) IRC section if applicable	(d) Amount of cash grant	(e) Amount of non-cash assistance	(f) Method of valuation (book, FMV, appraisal, other)	(g) Description of non-cash assistance	(h) Purpose of grant or assistance
ARIZONA AUTISM UNITED 5025 E WASHINGTON ST STE 212 PHOENIX, AZ 85034	16-1738730	501(C)(3)	12,268.	0.			RESEARCH/PUBLIC EDUCATION
ARTHRITIS FOUNDATION 1355 PEACHTREE ST 6TH FL ATLANTA, GA 30309	58-1341679	501(C)(3)	120,840.	0.			RESEARCH/PUBLIC EDUCATION
ASPCA - AMERICAN SOCIETY FOR THE PREVENTION OF CRUELTY TO ANIMALS - 424 E 92ND STREET - NEW YORK, NY 10128-6804	13-1623829	501(C)(3)	96,891.	0.			RESEARCH/PUBLIC EDUCATION
AUTISM SOCIETY OF SOUTHEASTERN WISCONSIN - 3720 N 124TH ST STE O - WAUWATOSA, WI 53222	39-1708201	501(C)(3)	12,181.	0.			RESEARCH/PUBLIC EDUCATION
AUTISM SPEAKS 1 EAST 33RD ST 4TH FL NEW YORK, NY 10016	20-2329938	501(C)(3)	238,434.	0.			RESEARCH/PUBLIC EDUCATION
BE THE MATCH FOUNDATION 500 N 5TH ST MINNEAPOLIS, MN 55401	41-1704734	501(C)(3)	56,193.	0.			RESEARCH/PUBLIC EDUCATION
BREAST CANCER RECOVERY FOUNDATION, WISCONSIN - 6131 NESBITT RD STE 300 - FITCHBURG, WI 53719	39-1894850	501(C)(3)	5,971.	0.			RESEARCH/PUBLIC EDUCATION
BROADSCOPE 6102 W LAYTON AVE GREENFIELD, WI 53220	39-1143353	501(C)(3)	10,518.	0.			RESEARCH/PUBLIC EDUCATION
CAMP BOGGY CREEK, FLORIDA, EUSTIS 30500 BRANTLEY BRANCH RD EUSTIS, FL 32736	59-3012889	501(C)(3)	6,360.	0.			RESEARCH/PUBLIC EDUCATION

Schedule I (Form 990)

Part II Continuation of Grants and Other Assistance to Governments and Organizations in the United States (Schedule I (Form 990), Part II.)							
(a) Name and address of organization or government	(b) EIN	(c) IRC section if applicable	(d) Amount of cash grant	(e) Amount of non-cash assistance	(f) Method of valuation (book, FMV, appraisal, other)	(g) Description of non-cash assistance	(h) Purpose of grant or assistance
CAMP HOBE P.O. BOX 520755 SALT LAKE CITY, UT 84152	57-1149391	501(C)(3)	5,331.	0.			RESEARCH/PUBLIC EDUCATION
CANCER RESEARCH INSTITUTE 29 BROADWAY 4TH FL NEW YORK, NY 10006	13-1837442	501(C)(3)	132,801.	0.			RESEARCH/PUBLIC EDUCATION
CARINGBRIDGE 2750 BLUE WATER RD. EAGAN, MN 55121	42-1529394	501(C)(3)	27,083.	0.			RESEARCH/PUBLIC EDUCATION
CARINGKIND, THE HEART OF ALZHEIMER'S CAREGIVING (FKA THE ALZHEIMER ASSOC.) - 360 LEXINGTON AVE 4TH FL - NEW YORK, NY 10017	13-3277408	501(C)(3)	13,051.	0.			RESEARCH/PUBLIC EDUCATION
CEREBRAL PALSY FOUNDATION 3 COLUMBUS CIRCLE 15TH FLOOR NEW YORK, NY 10019	13-6093337	501(C)(3)	17,393.	0.			RESEARCH/PUBLIC EDUCATION
CHILDREN'S CANCER ASSOCIATION 1200 NW NAITO PKWY STE 140 PORTLAND, OR 97209	93-1181662	501(C)(3)	9,194.	0.			RESEARCH/PUBLIC EDUCATION
CHILDREN'S CANCER NETWORK 6150 W CHANDLER BLVD STE 1 CHANDLER, AZ 85226	20-2129902	501(C)(3)	13,740.	0.			RESEARCH/PUBLIC EDUCATION
CHILDREN'S CANCER RESEARCH FUND, MINNESOTA - 7301 OHMS LN STE 355 - MINNEAPOLIS, MN 55439	41-1893645	501(C)(3)	36,512.	0.			RESEARCH/PUBLIC EDUCATION
CHILDREN'S HEART FOUNDATION 5 REVERE DR., STE 200 NORTHBROOK, IL 60062	36-4077528	501(C)(3)	11,815.	0.			RESEARCH/PUBLIC EDUCATION

Schedule I (Form 990)

Part II Continuation of Grants and Other Assistance to Governments and Organizations in the United States (Schedule I (Form 990), Part II.)							
(a) Name and address of organization or government	(b) EIN	(c) IRC section if applicable	(d) Amount of cash grant	(e) Amount of non-cash assistance	(f) Method of valuation (book, FMV, appraisal, other)	(g) Description of non-cash assistance	(h) Purpose of grant or assistance
CHILDREN'S HOSPITAL FOUNDATION - OKLAHOMA - 901 N LINCOLN BLVD., STE 305 - OKLAHOMA CITY, OK 73104	73-1200262	501(C)(3)	13,419.	0.			RESEARCH/PUBLIC EDUCATION
CHILDREN'S HOSPITAL OF THE KING'S DAUGHTERS - 11783 ROCK LANDING DR - NEWPORT NEWS, VA 23606	54-0506321	501(C)(3)	5,388.	0.			RESEARCH/PUBLIC EDUCATION
CHILDREN'S TUMOR FOUNDATION 370 LEXINGTON AVE., STE 2100 NEW YORK, NY 10017	13-2298956	501(C)(3)	20,045.	0.			RESEARCH/PUBLIC EDUCATION
CITY OF HOPE 1500 E DUARTE RD DUARTE, CA 91010	95-3435919	501(C)(3)	49,531.	0.			RESEARCH/PUBLIC EDUCATION
COOLEY'S ANEMIA FOUNDATION 330 SEVENTH AVE STE 200 NEW YORK, NY 10001	11-1971539	501(C)(3)	13,250.	0.			RESEARCH/PUBLIC EDUCATION
CRAIG HOSPITAL 3425 S CLARKSON ST ENGLEWOOD, CO 80113	84-0404233	501(C)(3)	7,365.	0.			RESEARCH/PUBLIC EDUCATION
CROHN'S & COLITIS FOUNDATION OF AMERICA, MINNESOTA, MINNESOTA/DAKOTAS CHAPT - 2277 HWY 36 W. STE 170 - ROSEVILLE, MN	13-6193105	501(C)(3)	27,928.	0.			RESEARCH/PUBLIC EDUCATION
CROHN'S & COLITIS FOUNDATION OF AMERICA, WISCONSIN CHAPTER - 17100 W. BLUEMOUND RD., STE 101 - BROOKFIELD, WI 53005	13-6193105	501(C)(3)	16,615.	0.			RESEARCH/PUBLIC EDUCATION
CYSTIC FIBROSIS FOUNDATION 4550 MONTGOMERY AVE., STE 1100N BETHESDA, MD 20814	13-1930701	501(C)(3)	191,952.	0.			RESEARCH/PUBLIC EDUCATION

Part II Continuation of Grants and Other Assistance to Governments and Organizations in the United States (Schedule I (Form 990), Part II.)

(a) Name and address of organization or government	(b) EIN	(c) IRC section if applicable	(d) Amount of cash grant	(e) Amount of non-cash assistance	(f) Method of valuation (book, FMV, appraisal, other)	(g) Description of non-cash assistance	(h) Purpose of grant or assistance
DAWS - DANBURY ANIMAL WELFARE SOCIETY, INC. - 147 GRASSY PLAIN ST - BETHEL, CT 06801	06-0945388	501(C)(3)	6,251.	0.			RESEARCH/PUBLIC EDUCATION
DEPRESSION AND BIPOLAR SUPPORT ALLIANCE - 55 E JACKSON BLVD STE 490 - CHICAGO, IL 60604	36-3379124	501(C)(3)	13,199.	0.			RESEARCH/PUBLIC EDUCATION
DOWN SYNDROME ASSOCIATION OF CENTRAL OHIO - 510 E NORTH BROADWAY 4TH FL - COLUMBUS, OH 43214	31-1126185	501(C)(3)	9,576.	0.			RESEARCH/PUBLIC EDUCATION
EASTER SEALS 141 W. JACKSON BLVD. 1400A CHICAGO, IL 60604	36-2171729	501(C)(3)	8,970.	0.			RESEARCH/PUBLIC EDUCATION
ENDOMETRIOSIS ASSOCIATION, INC. 8585 N 76TH PL MILWAUKEE, WI 53223	39-1414754	501(C)(3)	13,271.	0.			RESEARCH/PUBLIC EDUCATION
EPILEPSY FOUNDATION OF AMERICA 8301 PROFESSIONAL PL., STE 230 LANDOVER, MD 20785	52-0856660	501(C)(3)	52,997.	0.			RESEARCH/PUBLIC EDUCATION
EPILEPSY FOUNDATION OF MINNESOTA 1600 UNIVERSITY AVE., STE 300 SAINT PAUL, MN 55104	41-0874541	501(C)(3)	23,159.	0.			RESEARCH/PUBLIC EDUCATION
FAITH'S LODGE 505 HWY 169 N, STE 245 PLYMOUTH, MN 55441	20-4967588	501(C)(3)	26,305.	0.			RESEARCH/PUBLIC EDUCATION
FIRST ASSEMBLY OF GOD 133 JUNCTION RD BROOKFIELD, CT 06804	06-0872941	501(C)(3)	12,262.	0.			RESEARCH/PUBLIC EDUCATION

Schedule I (Form 990)

Part II Continuation of Grants and Other Assistance to Governments and Organizations in the United States (Schedule I (Form 990), Part II.)							
(a) Name and address of organization or government	(b) EIN	(c) IRC section if applicable	(d) Amount of cash grant	(e) Amount of non-cash assistance	(f) Method of valuation (book, FMV, appraisal, other)	(g) Description of non-cash assistance	(h) Purpose of grant or assistance
FISHER HOUSE FOUNDATION 12300 TWINBROOK PKWY STE 410 ROCKVILLE, MD 20852	11-3158401	501(C)(3)	19,803.	0.			RESEARCH/PUBLIC EDUCATION
FRASER 2400 W 64TH ST RICHFIELD, MN 55423	41-0781858	501(C)(3)	30,058.	0.			RESEARCH/PUBLIC EDUCATION
FREEDOM SERVICE DOGS, INC. 7193 S. DILLON CT. ENGLEWOOD, CO 80112	84-1068936	501(C)(3)	25,469.	0.			RESEARCH/PUBLIC EDUCATION
GLOBAL IMPACT 1199 N. FAIRFAX ST., STE 300 ALEXANDRIA, VA 22314	52-1273585	501(C)(3)	18,599.	0.			RESEARCH/PUBLIC EDUCATION
GREAT LAKES HEMOPHILIA FOUNDATION, WISCONSIN - 638 N. 18TH ST., STE 108 - MILWAUKEE, WI 53233	23-7367636	501(C)(3)	7,265.	0.			RESEARCH/PUBLIC EDUCATION
HAZELDEN BETTY FORD FOUNDATION 15251 PLEASANT VALLEY RD CENTER CITY, MN 55012	41-0682405	501(C)(3)	16,874.	0.			RESEARCH/PUBLIC EDUCATION
HOSPICE ORGANIZATION OF OHIO 2233 N BANK DR COLUMBUS, OH 43220	31-0966673	501(C)(3)	14,392.	0.			RESEARCH/PUBLIC EDUCATION
HUNTINGTON'S DISEASE SOCIETY OF AMERICA - 505 EIGHTH AVE STE 902 - NEW YORK, NY 10018	13-3349872	501(C)(3)	44,553.	0.			RESEARCH/PUBLIC EDUCATION
HUNTSMAN CANCER FOUNDATION 500 HUNTSMAN SALT LAKE CITY, UT 84108	87-0541293	501(C)(3)	43,839.	0.			RESEARCH/PUBLIC EDUCATION

Part II Continuation of Grants and Other Assistance to Governments and Organizations in the United States (Schedule I (Form 990), Part II.)

(a) Name and address of organization or government	(b) EIN	(c) IRC section if applicable	(d) Amount of cash grant	(e) Amount of non-cash assistance	(f) Method of valuation (book, FMV, appraisal, other)	(g) Description of non-cash assistance	(h) Purpose of grant or assistance
JDRF INTERNATIONAL 200 VEASY ST 28TH FL NEW YORK, NY 10281	23-1907729	501(C)(3)	70,542.	0.			RESEARCH/PUBLIC EDUCATION
KIDS IN NEED OF DENTISTRY (KIND) 2465 S DOWNING ST STE 210 DENVER, CO 80210	84-6038681	501(C)(3)	5,308.	0.			RESEARCH/PUBLIC EDUCATION
LEUKEMIA & LYMPHOMA SOCIETY 3 INTERNATIONAL DR STE 200 RYE BROOK, NY 10573	13-5644916	501(C)(3)	420,226.	0.			RESEARCH/PUBLIC EDUCATION
LIFE NAVIGATORS 7203 W CENTER ST WAUWATOSA, WI 53210	39-0978146	501(C)(3)	13,904.	0.			RESEARCH/PUBLIC EDUCATION
LUPUS FOUNDATION OF AMERICA 2121 K. ST., NW., STE 200 WASHINGTON, DC 20037	43-1131436	501(C)(3)	74,112.	0.			RESEARCH/PUBLIC EDUCATION
LUPUS FOUNDATION OF AMERICA, NORTH CAROLINA, NORTH CAROLINA CHAPTER - 4530 PARK RD., STE 302 - CHARLOTTE, NC 28209	56-1487119	501(C)(3)	6,149.	0.			RESEARCH/PUBLIC EDUCATION
LUPUS FOUNDATION OF AMERICA, OHIO, GREATER OHIO CHAPTER - 12930 CHIPPEWA RD., STE 6 - BRECKSVILLE, OH 44141	34-1229407	501(C)(3)	5,548.	0.			RESEARCH/PUBLIC EDUCATION
LUPUS FOUNDATION OF AMERICA, PENNSYLVANIA, PHILADELPHIA TRI-STATE CHAPTER - 101 GREENWOOD AVE., STE 200 - JENKINTOWN, PA	23-7080555	501(C)(3)	7,915.	0.			RESEARCH/PUBLIC EDUCATION
LUPUS FOUNDATION OF AMERICA, WISCONSIN, WISCONSIN CHAPTER - 2600 N. MAYFAIR RD., STE 320 - MILWAUKEE, WI 53226	39-1620195	501(C)(3)	5,037.	0.			RESEARCH/PUBLIC EDUCATION

Schedule I (Form 990)

Part II Continuation of Grants and Other Assistance to Governments and Organizations in the United States (Schedule I (Form 990), Part II.)							
(a) Name and address of organization or government	(b) EIN	(c) IRC section if applicable	(d) Amount of cash grant	(e) Amount of non-cash assistance	(f) Method of valuation (book, FMV, appraisal, other)	(g) Description of non-cash assistance	(h) Purpose of grant or assistance
MACC FUND (MIDWEST ATHLETES AGAINST CHILDHOOD CANCER), WISCONSIN - 10000 W INNOVATION DR STE 135 - MILWAUKEE, WI 53226	39-1270290	501(C)(3)	18,579.	0.			RESEARCH/PUBLIC EDUCATION
MAKE-A-WISH FOUNDATION OF COLORADO 7951 E MAPLEWOOD AVE STE 126 GREENWOOD VILLAGE, CO 80111	74-2273004	501(C)(3)	22,777.	0.			RESEARCH/PUBLIC EDUCATION
MAKE-A-WISH FOUNDATION OF MASSACHUSETTS AND RHODE ISLAND - 133 FEDERAL ST 2ND FL - BOSTON, MA 02110	22-2867371	501(C)(3)	8,074.	0.			RESEARCH/PUBLIC EDUCATION
MAKE-A-WISH FOUNDATION OF WISCONSIN - 11020 W PLANK CT STE 200 - WAUWATOSA, WI 53226	39-1543541	501(C)(3)	52,881.	0.			RESEARCH/PUBLIC EDUCATION
MAKE-A-WISH FOUNDATION, VIRGINIA 2810 N PARHAM RD STE 302 RICHMOND, VA 23294	54-1429614	501(C)(3)	7,284.	0.			RESEARCH/PUBLIC EDUCATION
MARCH OF DIMES FOUNDATION 1275 MAMARONECK AVE WHITE PLAINS, NY 10605	13-1846366	501(C)(3)	150,911.	0.			RESEARCH/PUBLIC EDUCATION
MEMORIAL BLOOD CENTERS, MINNESOTA 737 PELHAM BLVD SAINT PAUL, MN 55414	41-0693869	501(C)(3)	23,968.	0.			RESEARCH/PUBLIC EDUCATION
MENTAL HEALTH AMERICA (FORMERLY NATIONAL MENTAL HEALTH ASSOCIATION) - 500 MONTGOMERY ST STE 820 - ALEXANDRIA, VA 22314	13-1614906	501(C)(3)	31,370.	0.			RESEARCH/PUBLIC EDUCATION
MENTAL HEALTH AMERICA OF COLORADO 1120 LINCOLN ST., STE 1606 DENVER, CO 80223	84-0446365	501(C)(3)	8,012.	0.			RESEARCH/PUBLIC EDUCATION

Part II Continuation of Grants and Other Assistance to Governments and Organizations in the United States (Schedule I (Form 990), Part II.)

(a) Name and address of organization or government	(b) EIN	(c) IRC section if applicable	(d) Amount of cash grant	(e) Amount of non-cash assistance	(f) Method of valuation (book, FMV, appraisal, other)	(g) Description of non-cash assistance	(h) Purpose of grant or assistance
MENTAL HEALTH CENTER OF DENVER 4141 E DICKENSON PL DENVER, CO 80222	74-2499946	501(C)(3)	7,767.	0.			RESEARCH/PUBLIC EDUCATION
MINNEAPOLIS HEART INSTITUTE FOUNDATION, MINNESOTA - 920 E 28TH ST STE 100 - MINNEAPOLIS, MN 55407	41-1426406	501(C)(3)	28,200.	0.			RESEARCH/PUBLIC EDUCATION
MINNESOTA BRAIN INJURY ALLIANCE 2277 HIGHWAY 36 W STE 200 ROSEVILLE, MN 55113	36-3418174	501(C)(3)	24,182.	0.			RESEARCH/PUBLIC EDUCATION
MINNESOTA OVARIAN CANCER ALLIANCE 4604 CHICAGO AVE MINNEAPOLIS, MN 55407	41-1960449	501(C)(3)	26,649.	0.			RESEARCH/PUBLIC EDUCATION
MUSCULAR DYSTROPHY ASSOCIATION 161 N. CLARK ST., STE 3550 CHICAGO, IL 60601	13-1665552	501(C)(3)	113,199.	0.			RESEARCH/PUBLIC EDUCATION
MYASTHENIA GRAVIS FOUNDATION OF AMERICA - 290 TURNPIKE RD STE 5-315 - WESTBOROUGH, MA 01581	13-5672224	501(C)(3)	6,266.	0.			RESEARCH/PUBLIC EDUCATION
NAMI (NATIONAL ALLIANCE ON MENTAL ILLNESS) - 3803 N FAIRFAX DR STE 100 - ARLINGTON, VA 22203	43-1201653	501(C)(3)	80,675.	0.			RESEARCH/PUBLIC EDUCATION
NAMI (NATIONAL ALLIANCE ON MENTAL ILLNESS), MINNESOTA - 1919 UNIVERSITY AVE., W STE 400 - SAINT PAUL, MN 55104	41-1317030	501(C)(3)	39,882.	0.			RESEARCH/PUBLIC EDUCATION
NAMI (NATIONAL ALLIANCE ON MENTAL ILLNESS), OHIO, FRANKLIN COUNTY - 1225 DUBLIN RD., STE 110 - COLUMBUS, OH 43215	31-1197905	501(C)(3)	12,173.	0.			RESEARCH/PUBLIC EDUCATION

Schedule I (Form 990)

Part II Continuation of Grants and Other Assistance to Governments and Organizations in the United States (Schedule I (Form 990), Part II.)

(a) Name and address of organization or government	(b) EIN	(c) IRC section if applicable	(d) Amount of cash grant	(e) Amount of non-cash assistance	(f) Method of valuation (book, FMV, appraisal, other)	(g) Description of non-cash assistance	(h) Purpose of grant or assistance
NAMI (NATIONAL ALLIANCE ON MENTAL ILLNESS), OKLAHOMA - 3812 N. SANTA FE, STE 305 - OKLAHOMA CITY, OK 73118	73-1248588	501(C)(3)	11,636.	0.			RESEARCH/PUBLIC EDUCATION
NATIONAL HEMOPHILIA FOUNDATION 7 PENN PLAZA STE 1204 NEW YORK, NY 10001	13-5641857	501(C)(3)	8,272.	0.			RESEARCH/PUBLIC EDUCATION
NATIONAL HOSPICE AND PALLIATIVE CARE ORGANIZATION - 1731 KING ST STE 100 - ALEXANDRIA, VA 22314	54-1096334	501(C)(3)	9,485.	0.			RESEARCH/PUBLIC EDUCATION
NATIONAL KIDNEY FOUNDATION 30 E 33RD ST NEW YORK, NY 10016	13-1673104	501(C)(3)	101,039.	0.			RESEARCH/PUBLIC EDUCATION
NATIONAL KIDNEY FOUNDATION, WISCONSIN - 10909 W. GREENFIELD AVE., STE 201 - WEST ALLIS, WI 53214	39-1133761	501(C)(3)	10,363.	0.			RESEARCH/PUBLIC EDUCATION
NATIONAL MULTIPLE SCLEROSIS SOCIETY - 733 THIRD AVE 3RD FL - NEW YORK, NY 10017	13-5661935	501(C)(3)	288,202.	0.			RESEARCH/PUBLIC EDUCATION
NATIONAL OVARIAN CANCER COALITION 3800 MAPLE AVE., STE 435 DALLAS, TX 75219	65-0628064	501(C)(3)	16,381.	0.			RESEARCH/PUBLIC EDUCATION
NATIONAL PSORIASIS FOUNDATION 6600 SW 92ND AVE STE 300 PORTLAND, OR 97223	93-0571472	501(C)(3)	10,015.	0.			RESEARCH/PUBLIC EDUCATION
PANCREATIC CANCER ACTION NETWORK 1500 ROSECRANS AVE STE 200 MANHATTAN BEACH, CA 90266	33-0841281	501(C)(3)	135,214.	0.			RESEARCH/PUBLIC EDUCATION

Schedule I (Form 990)

Part II Continuation of Grants and Other Assistance to Governments and Organizations in the United States (Schedule I (Form 990), Part II.)							
(a) Name and address of organization or government	(b) EIN	(c) IRC section if applicable	(d) Amount of cash grant	(e) Amount of non-cash assistance	(f) Method of valuation (book, FMV, appraisal, other)	(g) Description of non-cash assistance	(h) Purpose of grant or assistance
PARKINSON ASSOCIATION OF THE ROCKIES - 1325 S COLORADO BLVD STE 204B - DENVER, CO 80222	74-2212593	501(C)(3)	5,629.	0.			RESEARCH/PUBLIC EDUCATION
PET PARTNERS 345 118TH AVE SE STE 200 BELLEVUE, WA 98005	91-1158281	501(C)(3)	20,942.	0.			RESEARCH/PUBLIC EDUCATION
PHOENIX CHILDREN'S HOSPITAL FOUNDATION - 2929 E CAMELBACK RD STE 122 - PHOENIX, AZ 85016	74-2421549	501(C)(3)	78,698.	0.			RESEARCH/PUBLIC EDUCATION
PLANNED PARENTHOOD MAR MONTE, INC., CALIFORNIA, SACRAMENTO - 1605 THE ALAMEDA - SAN JOSE, CA 95126	94-1583439	501(C)(3)	39,675.	0.			RESEARCH/PUBLIC EDUCATION
PLANNED PARENTHOOD OF WISCONSIN 302 N JACKSON ST MILWAUKEE, WI 53202	39-0863391	501(C)(3)	251,443.	0.			RESEARCH/PUBLIC EDUCATION
PREGNANCY DECISION HEALTH CENTERS, OHIO - 665 E DUBLIN GRANVILLE RD STE 120 - COLUMBUS, OH 43229	31-1002913	501(C)(3)	8,320.	0.			RESEARCH/PUBLIC EDUCATION
RONALD MCDONALD HOUSE CHARITIES OF CENTRAL ILLINOIS - 610 N SEVENTH ST - SPRINGFIELD, IL 62707	37-1145155	501(C)(3)	7,485.	0.			RESEARCH/PUBLIC EDUCATION
RONALD MCDONALD HOUSE CHARITIES OF DENVER - 1300 E 21ST AVE - DENVER, CO 80205	84-0728926	501(C)(3)	12,073.	0.			RESEARCH/PUBLIC EDUCATION
RONALD MCDONALD HOUSE CHARITIES OF EASTERN WISCONSIN - 8948 WATERTOWN PLANK RD - WAUWATOSA, WI 53226	39-1433107	501(C)(3)	28,109.	0.			RESEARCH/PUBLIC EDUCATION

Schedule I (Form 990)

Part II Continuation of Grants and Other Assistance to Governments and Organizations in the United States (Schedule I (Form 990), Part II.)

(a) Name and address of organization or government	(b) EIN	(c) IRC section if applicable	(d) Amount of cash grant	(e) Amount of non-cash assistance	(f) Method of valuation (book, FMV, appraisal, other)	(g) Description of non-cash assistance	(h) Purpose of grant or assistance
RONALD MCDONALD HOUSE CHARITIES OF MINNESOTA, UPPER MIDWEST - 818 FULTON ST SE - MINNEAPOLIS, MN 55414	41-1313107	501(C)(3)	42,480.	0.			RESEARCH/PUBLIC EDUCATION
RONALD MCDONALD HOUSE CHARITIES OF OKLAHOMA CITY, INC. - 13439 BROADWAY EXT - OKLAHOMA CITY, OK 73114	73-1103242	501(C)(3)	10,699.	0.			RESEARCH/PUBLIC EDUCATION
RONALD MCDONALD HOUSE CHARITIES OF SOUTHERN CALIFORNIA - 4560 FOUNTAIN AVE - LOS ANGELES, CA 90029	95-3167869	501(C)(3)	13,043.	0.			RESEARCH/PUBLIC EDUCATION
RONALD MCDONALD HOUSE CHARITIES OF THE INTERMOUNTAIN AREA, INC. - 935 EAST SOUTH TEMPLE - SALT LAKE CITY, UT 84102	74-2386043	501(C)(3)	15,551.	0.			RESEARCH/PUBLIC EDUCATION
RYAN HOUSE 110 W MUHAMMAD ALI WAY PHOENIX, AZ 85013	20-1852393	501(C)(3)	9,985.	0.			RESEARCH/PUBLIC EDUCATION
SAVE, SUICIDE AWARENESS VOICES OF EDUCATION - 7900 XERXES AVE. S., STE 810 - BLOOMINGTON, MN 55431	41-1702239	501(C)(3)	29,568.	0.			RESEARCH/PUBLIC EDUCATION
SICKLE CELL DISEASE ASSOCIATION OF AMERICA - 7240 PARKWAY DR., STE 180 - HANOVER, MD 21076	23-7175985	501(C)(3)	61,289.	0.			RESEARCH/PUBLIC EDUCATION
SMILE TRAIN 633 3RD AVE., 9TH FL NEW YORK, NY 10017	13-3661416	501(C)(3)	103,316.	0.			RESEARCH/PUBLIC EDUCATION
SPECIAL OLYMPICS COLORADO 384 INVERNESS PKWY STE 100 ENGLEWOOD, CO 80112	84-0713739	501(C)(3)	7,314.	0.			RESEARCH/PUBLIC EDUCATION

Part II Continuation of Grants and Other Assistance to Governments and Organizations in the United States (Schedule I (Form 990), Part II.)

(a) Name and address of organization or government	(b) EIN	(c) IRC section if applicable	(d) Amount of cash grant	(e) Amount of non-cash assistance	(f) Method of valuation (book, FMV, appraisal, other)	(g) Description of non-cash assistance	(h) Purpose of grant or assistance
SPECIAL OLYMPICS CONNECTICUT 2666 STATE ST STE 1 HAMDEN, CT 06517	23-7099756	501(C)(3)	5,462.	0.			RESEARCH/PUBLIC EDUCATION
SPINA BIFIDA ASSOCIATION OF AMERICA - 1600 WILSON BLVD STE 800 - ARLINGTON, VA 22209	58-1342181	501(C)(3)	13,409.	0.			RESEARCH/PUBLIC EDUCATION
ST. JUDE CHILDREN'S RESEARCH HOSPITAL - 262 DANNY THOMAS PL - MEMPHIS, TN 38105	62-0646012	501(C)(3)	4,485,285.	0.			RESEARCH/PUBLIC EDUCATION
SUSAN G. KOMEN 5005 LYNDON B JOHNSON FWY STE 250 DALLAS, TX 75244	75-1835298	501(C)(3)	147,165.	0.			RESEARCH/PUBLIC EDUCATION
SUSAN G. KOMEN, GEORGIA, GREATER ATLANTA AFFILIATE - 3525 PIEDMONT RD. 5 215 - ALTANTA, GA 30305	58-1959763	501(C)(3)	8,662.	0.			RESEARCH/PUBLIC EDUCATION
SUSAN G. KOMEN, ILLINOIS, CHICAGO AREA AFFILIATE - 213 W. INSTITUTE PL., STE 302 - CHICAGO, IL 60610	36-4111723	501(C)(3)	5,178.	0.			RESEARCH/PUBLIC EDUCATION
SUSAN G. KOMEN, MINNESOTA 960 SOUTHDALE CTR. EDINA, MN 55435	41-1924790	501(C)(3)	28,590.	0.			RESEARCH/PUBLIC EDUCATION
SUSAN G. KOMEN, NEW YORK, GREATER NEW YORK CITY AFFILIATE - 246 W. 38TH ST., STE 503 - NEW YORK, NY 10018	91-2049420	501(C)(3)	6,168.	0.			RESEARCH/PUBLIC EDUCATION
SUSAN G. KOMEN, OHIO, COLUMBUS AFFILIATE - 929 EASTWIND DR., STE 211 - WESTERVILLE, OH 43081	75-2844651	501(C)(3)	11,645.	0.			RESEARCH/PUBLIC EDUCATION

Schedule I (Form 990)

Part II Continuation of Grants and Other Assistance to Governments and Organizations in the United States (Schedule I (Form 990), Part II.)

(a) Name and address of organization or government	(b) EIN	(c) IRC section if applicable	(d) Amount of cash grant	(e) Amount of non-cash assistance	(f) Method of valuation (book, FMV, appraisal, other)	(g) Description of non-cash assistance	(h) Purpose of grant or assistance
SUSAN G. KOMEN, PENNSYLVANIA, PHILADELPHIA - 125 S. 9TH ST., STE 202 - PHILADELPHIA, PA 19107	75-2949264	501(C)(3)	11,656.	0.			RESEARCH/PUBLIC EDUCATION
SUSAN G. KOMEN, TEXAS, NORTH AND WEST TEXAS AFFILIATE - P.O. BOX 261730 - PLANO, TX 75026	75-2356437	501(C)(3)	12,367.	0.			RESEARCH/PUBLIC EDUCATION
SUSAN G. KOMEN, TEXAS, SAN ANTONIO AFFILIATE - 85 NE LOOP 410, STE 407 - SAN ANTONIO, TX 78216	74-2856696	501(C)(3)	18,905.	0.			RESEARCH/PUBLIC EDUCATION
SUSAN G. KOMEN, WASHINGTON, PUGET SOUND CHAPTER - 112 5TH AVE., N - SEATTLE, WA 98109	91-1624040	501(C)(3)	11,210.	0.			RESEARCH/PUBLIC EDUCATION
TEXAS SCOTTISH RITE HOSPITAL FOR CHILDREN - 2222 WELBORN ST - DALLAS, TX 75219	75-0818178	501(C)(3)	38,493.	0.			RESEARCH/PUBLIC EDUCATION
THE PAINTED TURTLE 1300 4TH ST., STE 300 SANTA MONICA, CA 90401	95-4612481	501(C)(3)	7,098.	0.			RESEARCH/PUBLIC EDUCATION
TOURETTE ASSOCIATION OF AMERICA 42 40 BELL BLVD BAYSIDE, NY 11361	23-7191992	501(C)(3)	7,456.	0.			RESEARCH/PUBLIC EDUCATION
UNITED CEREBRAL PALSY OF GREATER DANE COUNTY - 2801 COHO ST STE 300 - MADISON, WI 53713	39-1034054	501(C)(3)	7,792.	0.			RESEARCH/PUBLIC EDUCATION
UNITED WAY OF RHODE ISLAND 50 VALLEY STREET PROVIDENCE, RI 02909	05-0276059	501(C)(3)	14,037.	0.			RESEARCH/PUBLIC EDUCATION

Schedule I (Form 990)

Part II Continuation of Grants and Other Assistance to Governments and Organizations in the United States (Schedule I (Form 990), Part II.)							
(a) Name and address of organization or government	(b) EIN	(c) IRC section if applicable	(d) Amount of cash grant	(e) Amount of non-cash assistance	(f) Method of valuation (book, FMV, appraisal, other)	(g) Description of non-cash assistance	(h) Purpose of grant or assistance
UNITED WAY OF WESTERN CONNECTICUT 301 MAIN ST., STE 2-5 DANBURY, CT 06810	06-0646577	501(C)(3)	7,494.	0.			RESEARCH/PUBLIC EDUCATION
WISCONSIN PARKINSON ASSOCIATION 16655 W. BLUEMOUND RD., STE 330 BROOKFIELD, WI 53005	39-1492810	501(C)(3)	11,265.	0.			RESEARCH/PUBLIC EDUCATION
WISCONSIN WOMEN'S HEALTH FOUNDATION - 2503 TODD DRIVE - MADISON, WI 53713	39-1900678	501(C)(3)	5,112.	0.			RESEARCH/PUBLIC EDUCATION
ZERO - THE END OF PROSTATE CANCER 515 KING ST STE 420 ALEXANDRIA, VA 22314	59-3400922	501(C)(3)	29,472.	0.			RESEARCH/PUBLIC EDUCATION
ALLIANCE FOR CANCER GENE THERAPY, INC. - 96 CUMMINGS POINT RD. - STAMFORD, CT 06902	06-1619523	501(C)(3)	11,535.	0.			RESEARCH/PUBLIC EDUCATION
AMERICA'S CHARITIES P.O. BOX 75083 BALTIMORE, MD 21275	54-1517707	501(C)(3)	16,722.	0.			RESEARCH/PUBLIC EDUCATION
ANGEL FOUNDATION 1155 CENTRE POINTE DR., STE 7 MENDOTA HEIGHTS, MN 55120	41-1990883	501(C)(3)	26,025.	0.			RESEARCH/PUBLIC EDUCATION
AUTISM SOCIETY OF MINNESOTA 2380 WYCLIFF ST., STE 102 SAINT PAUL, MN 55114	41-1718029	501(C)(3)	23,131.	0.			RESEARCH/PUBLIC EDUCATION
BLACK WOMEN'S HEALTH IMPERATIVE 384 NORTHYARDS BLVD. NW ALTANTA, GA 30313	58-1557556	501(C)(3)	23,700.	0.			RESEARCH/PUBLIC EDUCATION

Schedule I (Form 990)

Part II Continuation of Grants and Other Assistance to Governments and Organizations in the United States (Schedule I (Form 990), Part II.)							
(a) Name and address of organization or government	(b) EIN	(c) IRC section if applicable	(d) Amount of cash grant	(e) Amount of non-cash assistance	(f) Method of valuation (book, FMV, appraisal, other)	(g) Description of non-cash assistance	(h) Purpose of grant or assistance
CAN DO CANINES 9440 SCIENCE CENTER DR. NEW HOPE, MN 55428	41-1594165	501(C)(3)	40,370.	0.			RESEARCH/PUBLIC EDUCATION
CHILDREN'S HEALTH FUND 215 W. 125TH ST., STE 301 NEW YORK, NY 10027	13-3468427	501(C)(3)	21,408.	0.			RESEARCH/PUBLIC EDUCATION
COLORECTAL CANCER ALLIANCE 1025 VERMONT AVE., NW, STE 1066 WASHINGTON, DC 20005	86-0947831	501(C)(3)	42,120.	0.			RESEARCH/PUBLIC EDUCATION
GILDA'S CLUB TWIN CITIES 10560 WAYZATA BLVD. MINNETONKA, MN 55305	20-4265823	501(C)(3)	23,560.	0.			RESEARCH/PUBLIC EDUCATION
HOSPICE ALLIANCE 10220 PRAIRIE RIDGE BLVD. PLEASANT PRAIRIE,, WI 53158	39-1822945	501(C)(3)	6,933.	0.			RESEARCH/PUBLIC EDUCATION
JUSTUS HEALTH 2577 TERRITORIAL ROAD SAINT PAUL, MN 55114	41-1524746	501(C)(3)	22,592.	0.			RESEARCH/PUBLIC EDUCATION
NEIGHBOR TO NATION 1199 N FAIRFAX ST., STE 600 ALEXANDRIA, VA 22314	54-1879282	501(C)(3)	16,378.	0.			RESEARCH/PUBLIC EDUCATION
SHRINER'S HOSPITAL FOR CHILDREN - UT - 1275 E. FAIRFAX RD. - SALT LAKE CITY, UT 84103	36-2193608	501(C)(3)	16,400.	0.			RESEARCH/PUBLIC EDUCATION
SOUTHWEST AUTISM RESEARCH AND RESOURCE CENTER - 300 N. 18TH ST. - PHOENIX, AZ 85006	31-1496646	501(C)(3)	5,992.	0.			RESEARCH/PUBLIC EDUCATION

Part II Continuation of Grants and Other Assistance to Governments and Organizations in the United States (Schedule I (Form 990), Part II.)

(a) Name and address of organization or government	(b) EIN	(c) IRC section if applicable	(d) Amount of cash grant	(e) Amount of non-cash assistance	(f) Method of valuation (book, FMV, appraisal, other)	(g) Description of non-cash assistance	(h) Purpose of grant or assistance
THE MICHAEL J. FOX FOUNDATION FOR PARKINSON'S RESEARCH - GRAND CENTRAL STATION P.O. BOX 4777 - NEW YORK, NY 10163	13-4141945	501(C)(3)	28,362.	0.			RESEARCH/PUBLIC EDUCATION
CROHN'S & COLITIS FOUNDATION 733 THIRD AVE. STE 510 NEW YORK, NY 10017	13-6193105	501(C)(3)	77,347.	0.			RESEARCH/PUBLIC EDUCATION
CROHN'S & COLITIS FOUNDATION, CALIFORNIA, NORTHERN CALIFORNIA - 5 THIRD ST., STE 815 - SAN FRANCISCO, CA 94103	13-6193105	501(C)(3)	6,059.	0.			RESEARCH/PUBLIC EDUCATION
CROHN'S & COLITIS FOUNDATION, OHIO, CENTRAL OHIO CHAPTER - 6797 N HIGH ST., STE 119 - WORTHINGTON, OH 43085	13-6193105	501(C)(3)	5,628.	0.			RESEARCH/PUBLIC EDUCATION
DOWN SYNDROME ASSOC. OF WISCONSIN, INC. - 11709 W CLEVELAND AVE., STE 2 - WEST ALLIS, WI 53227	39-1681338	501(C)(3)	10,175.	0.			RESEARCH/PUBLIC EDUCATION
FLORIDA BREAST CANCER FOUNDATION 11900 BISCAYNE BLVD., STE 288 MIAMI, FL 33181	01-0694045	501(C)(3)	7,751.	0.			RESEARCH/PUBLIC EDUCATION
HAROLD HAMM DIABETES CENTER 100 TIMBERDELL RD NORMAN, OK 73019	73-6091755	501(C)(3)	10,104.	0.			RESEARCH/PUBLIC EDUCATION
HOSPICE & PALLIATIVE CARE NETWORK OF MD, INC. - 20 INTERNATIONAL CIRCLE, STE 230 - HUNT VALLEY, MD 21030	52-1364551	501(C)(3)	8,324.	0.			RESEARCH/PUBLIC EDUCATION
JDRF INTERNATIONAL, LOCAL PAYEE ACCOUNT - 200 VEASY ST 28TH FL - NEW YORK, NY 10281	23-1907729	501(C)(3)	270,218.	0.			RESEARCH/PUBLIC EDUCATION

Schedule I (Form 990)

Part II Continuation of Grants and Other Assistance to Governments and Organizations in the United States (Schedule I (Form 990), Part II.)

(a) Name and address of organization or government	(b) EIN	(c) IRC section if applicable	(d) Amount of cash grant	(e) Amount of non-cash assistance	(f) Method of valuation (book, FMV, appraisal, other)	(g) Description of non-cash assistance	(h) Purpose of grant or assistance
LUPUS FOUNDATION OF OKLAHOMA, OKLAHOMA CITY - 3017 N STILES AVE., STE 203 - OKLAHOMA CITY, OK 73105	23-7438732	501(C)(3)	7,373.	0.			RESEARCH/PUBLIC EDUCATION
MAKE-A-WISH FOUNDATION OF MIDDLE TENNESSEE - 600 HILL AVE STE 201 - NASHVILLE, TN 37210	62-1833327	501(C)(3)	6,550.	0.			RESEARCH/PUBLIC EDUCATION
NAMI, OREGON 4701 SE 24TH ST. STE E PORTLAND, OR 97202	93-0875209	501(C)(3)	6,948.	0.			RESEARCH/PUBLIC EDUCATION
NAMI, WASHINGTON, GREATER SEATTLE 802 NW 70TH ST SEATTLE, WA 98117	91-1043712	501(C)(3)	8,134.	0.			RESEARCH/PUBLIC EDUCATION
NATIONAL FOUNDATION FOR CANCER RESEARCH - 5515 SECURITY LN., STE 1105 - ROCKVILLE, MD 20852	04-2531031	501(C)(3)	22,586.	0.			RESEARCH/PUBLIC EDUCATION
PLANNED PARENTHOOD OF MICHIGAN 950 VICTORS WAY, STE 100 ANN ARBOR, MI 48108	38-1707521	501(C)(3)	24,200.	0.			RESEARCH/PUBLIC EDUCATION
PLANNED PARENTHOOD, MARYLAND 330 N HOWARD ST. BALTIMORE, MD 21201	52-0607930	501(C)(3)	7,360.	0.			RESEARCH/PUBLIC EDUCATION
SAMARITAN'S PURSE 801 BAMBOO RD. P.O. BOX 300 BOONE, NC 28607	58-1437002	501(C)(3)	102,226.	0.			RESEARCH/PUBLIC EDUCATION
SUSAN G. KOMEN, CALIFORNIA, SAN FRANCISCO BAY - 1469 PACIFIC AVE - SAN FRANCISCO, CA 94109	94-3047626	501(C)(3)	5,849.	0.			RESEARCH/PUBLIC EDUCATION

Part II Continuation of Grants and Other Assistance to Governments and Organizations in the United States (Schedule I (Form 990), Part II.)							
(a) Name and address of organization or government	(b) EIN	(c) IRC section if applicable	(d) Amount of cash grant	(e) Amount of non-cash assistance	(f) Method of valuation (book, FMV, appraisal, other)	(g) Description of non-cash assistance	(h) Purpose of grant or assistance
SUSAN G. KOMEN, OREGON, OREGON & SW WASHINGTON - 1500 SW 1ST AVE STE 270 - PORTLAND, OR 97201	93-1068897	501(C)(3)	7,507.	0.			RESEARCH/PUBLIC EDUCATION
SUSAN G. KOMEN, VIRGINIA, CENTRAL & EASTERN VIRGINIA, RICHMOND - 611 N COURTHOUSE RD., STE 110 - RICHMOND, VA 23236	75-2844659	501(C)(3)	10,406.	0.			RESEARCH/PUBLIC EDUCATION
A CHILD'S HOPE FUND 425 W ALLEN AVE STE 11 SAN DIMAS, CA 91773	95-3976258	501(C)(3)	5,599.	0.			RESEARCH/PUBLIC EDUCATION
ALISA ANN RUCH BURN FOUNDATION, CALIFORNIA, PASADENA - 50 N HILL AVE STE 305 - PASADENA, CA 91106	23-7162017	501(C)(3)	6,493.	0.			RESEARCH/PUBLIC EDUCATION
ALS ASSOC, TEXAS, TEXAS CHAPTER, PLANO - 5830 GRANITE PKWY STE 100-320 - PLANO, TX 75024	74-2678974	501(C)(3)	11,631.	0.			RESEARCH/PUBLIC EDUCATION
AMERICAN BIBLE SOCIETY 101 N INDEPENDENCE MALL E 8TH FL PHILADELPHIA, PA 19106	13-1623885	501(C)(3)	7,768.	0.			RESEARCH/PUBLIC EDUCATION
AMERICAN FOUNDATION FOR SUICIDE PREVENTION - 199 WATER ST 11TH FL - NEW YORK, NY 10038	13-3393329	501(C)(3)	31,727.	0.			RESEARCH/PUBLIC EDUCATION
ARCHBISHOP RIORDAN HIGH SCHOOL 175 FRIDA KAHLO WAY SAN FRANCISCO, CA 94112	94-1156677	501(C)(3)	5,045.	0.			RESEARCH/PUBLIC EDUCATION
BREAST CANCER RESEARCH FOUNDATION, INC. - 28 W 44TH ST STE 609 - NEW YORK, NY 10036	13-3727250	501(C)(3)	45,250.	0.			RESEARCH/PUBLIC EDUCATION

Schedule I (Form 990)

Part II Continuation of Grants and Other Assistance to Governments and Organizations in the United States (Schedule I (Form 990), Part II.)							
(a) Name and address of organization or government	(b) EIN	(c) IRC section if applicable	(d) Amount of cash grant	(e) Amount of non-cash assistance	(f) Method of valuation (book, FMV, appraisal, other)	(g) Description of non-cash assistance	(h) Purpose of grant or assistance
CHILDREN'S CANCER ASSISTANCE FUND 500 N BROADWAY STE 1850 SAINT LOUIS, MO 63102	37-1227890	501(C)(3)	5,923.	0.			RESEARCH/PUBLIC EDUCATION
CHILDREN'S FOOD FUND/WORLD EMERGENCY RELIEF - 425 W ALLEN AVE STE 111 - SAN DIMAS, CA 91773	95-4014743	501(C)(3)	9,909.	0.			RESEARCH/PUBLIC EDUCATION
CHILDREN'S HEALTH CARE FOUNDATION 2525 CHICAGO AVE S MINNEAPOLIS, MN 55404	41-1814223	501(C)(3)	23,597.	0.			RESEARCH/PUBLIC EDUCATION
CHILDREN'S HUNGER RELIEF FUND 2360 PROFESSIONAL DR STE 200 SANTA ROSA, CA 95403	51-0168428	501(C)(3)	10,843.	0.			RESEARCH/PUBLIC EDUCATION
CHRISTIAN MILITARY FELLOWSHIP P.O. BOX 1207 ENGLEWOOD, CO 80150	84-0780545	501(C)(3)	7,135.	0.			RESEARCH/PUBLIC EDUCATION
CONVOY OF HOPE 330 S PATTERSON AVE SPRINGFIELD, MO 65802	68-0051386	501(C)(3)	5,079.	0.			RESEARCH/PUBLIC EDUCATION
COVENANT HOUSE INTERNATIONAL 461 EIGHTH AVE NEW YORK, NY 10001	13-2725416	501(C)(3)	24,918.	0.			RESEARCH/PUBLIC EDUCATION
CRESCENT COVE 3440 BELTLINE BLVD STE 207 SAINT LOUIS PARK, MN 55416	27-1035515	501(C)(3)	7,540.	0.			RESEARCH/PUBLIC EDUCATION
CROHN'S & COLITIS FOUNDATION, NORTH CAROLINA, CAROLINAS CHAPTER - 1100 S MINT ST STE 204 - CHARLOTTE, NC 28203	13-6193105	501(C)(3)	5,732.	0.			RESEARCH/PUBLIC EDUCATION

Part II Continuation of Grants and Other Assistance to Governments and Organizations in the United States (Schedule I (Form 990), Part II.)

(a) Name and address of organization or government	(b) EIN	(c) IRC section if applicable	(d) Amount of cash grant	(e) Amount of non-cash assistance	(f) Method of valuation (book, FMV, appraisal, other)	(g) Description of non-cash assistance	(h) Purpose of grant or assistance
CROHN'S & COLITIS FOUNDATION, WASHINGTON, NORTHWEST CHAPTER - 9 LAKE BELLEVUE DR STE 203 - BELLEVUE, WA 98005	13-6193105	501(C)(3)	9,585.	0.			RESEARCH/PUBLIC EDUCATION
EPILEPSY FOUNDATION OF PENNSYLVANIA, EASTERN PA - 919 WALNUT ST STE 700 - PHILADELPHIA, PA 19107	23-1882279	501(C)(3)	7,345.	0.			RESEARCH/PUBLIC EDUCATION
EPILEPSY FOUNDATION OF TEXAS, CENTRAL & SOUTH, SAN ANTONIO CHAPTER - 8601 VILLAGE DR STE 220 - SAN ANTONIO, TX 78217	76-0415338	501(C)(3)	12,743.	0.			RESEARCH/PUBLIC EDUCATION
EPILEPSY FOUNDATION, WASHINGTON 2311 N 45TH ST STE 134 SEATTLE, WA 98103	52-0856660	501(C)(3)	7,250.	0.			RESEARCH/PUBLIC EDUCATION
EVERY KID DESERVES 1199 N FAIRFAX ST., STE 600 ALEXANDRIA, VA 22314	13-6167225	501(C)(3)	5,020.	0.			RESEARCH/PUBLIC EDUCATION
FOCUS ON THE FAMILY 8605 EXPLORER DR COLORADO SPRINGS, CO 80920	95-3188150	501(C)(3)	21,943.	0.			RESEARCH/PUBLIC EDUCATION
FOOD FOR THE HUNGRY 1224 E WASHINGTON ST PHOENIX, AZ 85034	95-2680390	501(C)(3)	7,003.	0.			RESEARCH/PUBLIC EDUCATION
HEMOPHILIA FOUNDATION OF MINNESOTA/DAKOTAS - 750 S PLAZA DR STE 207 - MENDOTA HEIGHTS, MN 55120	41-6032276	501(C)(3)	15,861.	0.			RESEARCH/PUBLIC EDUCATION
LEUKEMIA RESEARCH FOUNDATION, INC. 191 WAUKEGAN STE 105 NORTHFIELD, IL 60093	36-6102182	501(C)(3)	9,054.	0.			RESEARCH/PUBLIC EDUCATION

Schedule I (Form 990)

Part II Continuation of Grants and Other Assistance to Governments and Organizations in the United States (Schedule I (Form 990), Part II.)							
(a) Name and address of organization or government	(b) EIN	(c) IRC section if applicable	(d) Amount of cash grant	(e) Amount of non-cash assistance	(f) Method of valuation (book, FMV, appraisal, other)	(g) Description of non-cash assistance	(h) Purpose of grant or assistance
MAZON: A JEWISH RESPONSE TO HUNGER 10850 WILSHIRE BLVD STE 400 LOS ANGELES, CA 90024	22-2624532	501(C)(3)	5,670.	0.			RESEARCH/PUBLIC EDUCATION
MAZZONI CENTER 1348 BAINBRIDGE ST PHILADELPHIA, PA 19147	23-2176338	501(C)(3)	6,597.	0.			RESEARCH/PUBLIC EDUCATION
MERCY SHIPS P.O. BOX 2020 LINDALE, TX 75771	26-2414132	501(C)(3)	8,173.	0.			RESEARCH/PUBLIC EDUCATION
MINNESOTA NETWORK OF HOSPICE AND PALLIATIVE CARE - 1265 GREY FOX RD - ARDEN HILLS, MN 55112	41-1414694	501(C)(3)	22,163.	0.			RESEARCH/PUBLIC EDUCATION
MINNESOTA STROKE ASSOCIATION 2277 HWY 36 W STE 200 ROSEVILLE, MN 55113	27-1261232	501(C)(3)	21,685.	0.			RESEARCH/PUBLIC EDUCATION
MISSION RESOLVE FOUNDATION 1510 SE 17TH ST STE 301 FORT LAUDERDALE, FL 33316	84-2481021	501(C)(3)	209,585.	0.			RESEARCH/PUBLIC EDUCATION
NAMI, TEXAS, AUSTIN (STATE HQ) 4110 GUADALUPE ST BLDG 781 RM 428 AUSTIN, TX 78751	74-2380175	501(C)(3)	8,404.	0.			RESEARCH/PUBLIC EDUCATION
NAMI, WISCONSIN 4233 W. BELTLINE HWY MADISON, WI 53711	39-1397227	501(C)(3)	7,362.	0.			RESEARCH/PUBLIC EDUCATION
NATIONAL ATAXIA FOUNDATION 600 HWY 169 S STE 1725 MINNEAPOLIS, MN 55426	41-0832903	501(C)(3)	6,334.	0.			RESEARCH/PUBLIC EDUCATION

Part II Continuation of Grants and Other Assistance to Governments and Organizations in the United States (Schedule I (Form 990), Part II.)							
(a) Name and address of organization or government	(b) EIN	(c) IRC section if applicable	(d) Amount of cash grant	(e) Amount of non-cash assistance	(f) Method of valuation (book, FMV, appraisal, other)	(g) Description of non-cash assistance	(h) Purpose of grant or assistance
NAZARENE COMPASSIONATE MINISTRIES 17001 PRAIRIE STAR PKY STE 100 LENEXA, KS 66220	43-1550318	501(C)(3)	5,364.	0.			RESEARCH/PUBLIC EDUCATION
ONE HEARTLAND 2101 HENNEPIN AVE S STE 200 MINNEAPOLIS, MN 55405	39-1763115	501(C)(3)	21,389.	0.			RESEARCH/PUBLIC EDUCATION
PARALYZED VETERANS OF AMERICA 801 18TH ST NW WASHINGTON, DC 20006	13-1946868	501(C)(3)	18,323.	0.			RESEARCH/PUBLIC EDUCATION
PARKINSON'S FOUNDATION 200 SE 1ST ST STE 800 MIAMI, FL 33131	13-1866796	501(C)(3)	29,982.	0.			RESEARCH/PUBLIC EDUCATION
PRISON FELLOWSHIP MINISTRIES 44180 RIVESIDE PKWY LANSDOWNE, VA 20176	62-0988294	501(C)(3)	5,363.	0.			RESEARCH/PUBLIC EDUCATION
RONALD MCDONALD HOUSE CHARITIES OF NEW ENGLAND - 45 GAY ST - PROVIDENCE, RI 02905	22-2760752	501(C)(3)	5,277.	0.			RESEARCH/PUBLIC EDUCATION
SAN FRANCISCO FIREFIGHTERS TOY PROGRAM - 1139 MISSION ST - SAN FRANCISCO, CA 94103	94-2598851	501(C)(3)	5,095.	0.			RESEARCH/PUBLIC EDUCATION
SECOND WIND FUND, INC. 899 LOGAN ST STE 208 DENVER, CO 80203	73-1701536	501(C)(3)	8,255.	0.			RESEARCH/PUBLIC EDUCATION
SICKLE CELL DISEASE ASSN OF AMERICA, PA, PHILADELPHIA/DELAWARE VALLEY CHAP - 5300 WYNNEFIELD AVE 2ND FL - PHILADELPHIA, PA 19131	22-2436381	501(C)(3)	7,113.	0.			RESEARCH/PUBLIC EDUCATION

Schedule I (Form 990)

Part II Continuation of Grants and Other Assistance to Governments and Organizations in the United States (Schedule I (Form 990), Part II.)							
(a) Name and address of organization or government	(b) EIN	(c) IRC section if applicable	(d) Amount of cash grant	(e) Amount of non-cash assistance	(f) Method of valuation (book, FMV, appraisal, other)	(g) Description of non-cash assistance	(h) Purpose of grant or assistance
SPECIAL OLYMPICS FLORIDA, FLORIDA, CLERMONT - 1915 DON WICKHAMDR - CLERMONT, FL 34711	23-7181560	501(C)(3)	5,673.	0.			RESEARCH/PUBLIC EDUCATION
SPECIAL OLYMPICS OKLAHOMA 6835 S CANTON AVE TULSA, OK 74136	23-7174120	501(C)(3)	9,640.	0.			RESEARCH/PUBLIC EDUCATION
SUSAN G. KOMEN, CALIFORNIA, INLAND EMPIRE AFFILIATE - 7177 BROCKTON AVE STE 108 - RIVERSIDE, CA 92506	33-0802964	501(C)(3)	6,061.	0.			RESEARCH/PUBLIC EDUCATION
SUSAN G. KOMEN, COLORADO, DENVER METROPOLITAN AFFILIATE - 50 S STEELE ST STE 100 - DENVER, CO 80209	84-1199858	501(C)(3)	5,034.	0.			RESEARCH/PUBLIC EDUCATION
SUSAN G. KOMEN, NORTH CAROLINA, NC TRIANGLE TO THE COAST - 600 AIRPORT BLVD STE 100 - MORRISVILLE, NC 27560	75-2845066	501(C)(3)	6,427.	0.			RESEARCH/PUBLIC EDUCATION
SUSAN G. KOMEN, OKLAHOMA, TULSA AFFILIATE - 101 PARK AVE STE 325 - OKLAHOMA CITY, OK 73102	73-1372249	501(C)(3)	5,831.	0.			RESEARCH/PUBLIC EDUCATION
SUSAN G. KOMEN, WISCONSIN, MILWAUKEE - 2025 W OKLAHOMA AVE STE 116 - MILWAUKEE, WI 53215	75-2844639	501(C)(3)	9,701.	0.			RESEARCH/PUBLIC EDUCATION
THE UNITED SOMMELIERS FOUNDATION 3953 LUCERO ST NAPA, CA 94558	85-0523166	501(C)(3)	31,426.	0.			RESEARCH/PUBLIC EDUCATION
THE V FOUNDATION 14600 WESTON PKWY CARY, NC 27513	13-3705951	501(C)(3)	7,503.	0.			RESEARCH/PUBLIC EDUCATION

Part II Continuation of Grants and Other Assistance to Governments and Organizations in the United States (Schedule I (Form 990), Part II.)

(a) Name and address of organization or government	(b) EIN	(c) IRC section if applicable	(d) Amount of cash grant	(e) Amount of non-cash assistance	(f) Method of valuation (book, FMV, appraisal, other)	(g) Description of non-cash assistance	(h) Purpose of grant or assistance
TOBY KEITH FOUNDATION 818 NE 8TH ST OKLAHOMA CITY, OK 73104	20-4089800	501(C)(3)	15,899.	0.			RESEARCH/PUBLIC EDUCATION
TORREY PINES INSTITUTE FOR MOLECULAR STUDIES - 11350 SW VILLAGE PKWY - PORT SAINT LUCIE, FL 34987	33-0319501	501(C)(3)	6,393.	0.			RESEARCH/PUBLIC EDUCATION
TUBMAN 4432 CHICAGO AVAE S MINNEAPOLIS, MN 55407	41-1240048	501(C)(3)	8,700.	0.			RESEARCH/PUBLIC EDUCATION
VOICE OF THE MARTYRS 1815 SE BISON RD BARTLESVILLE, OK 74006	73-1395057	501(C)(3)	18,522.	0.			RESEARCH/PUBLIC EDUCATION
WATER MISSIONS INTERNATIONAL P.O. BOX 71489 NORTH CHARLESTON, SC 29415	57-1116978	501(C)(3)	8,497.	0.			RESEARCH/PUBLIC EDUCATION
WAYSIDE RECOVERY CENTER 3705 PARK CENTER BLVD SAINT LOUIS PARK, MN 55416	41-0873104	501(C)(3)	7,163.	0.			RESEARCH/PUBLIC EDUCATION
WEST VALLEY CHILD CRISIS CENTER/HOPE COMMUNITY SERVICES - 18001 N 79TH AVE C-56 - GLENDALE, AZ 85308	86-0589516	501(C)(3)	6,003.	0.			RESEARCH/PUBLIC EDUCATION
WESTERN STATES CANCER RESEARCH PROGRAM NCORP - 1325 S COLORADO BLVD BLDG B STE 400 - DENVER, CO 80222	84-1090476	501(C)(3)	6,987.	0.			RESEARCH/PUBLIC EDUCATION
WISHES & MORE 961 HILLWIND RD NE MINNEAPOLIS, MN 55432	20-1766318	501(C)(3)	7,419.	0.			RESEARCH/PUBLIC EDUCATION

Schedule I (Form 990)

Part III **Grants and Other Assistance to Domestic Individuals.** Complete if the organization answered "Yes" on Form 990, Part IV, line 22.
Part III can be duplicated if additional space is needed.

(a) Type of grant or assistance	(b) Number of recipients	(c) Amount of cash grant	(d) Amount of non-cash assistance	(e) Method of valuation (book, FMV, appraisal, other)	(f) Description of noncash assistance

Part IV **Supplemental Information.** Provide the information required in Part I, line 2; Part III, column (b); and any other additional information.

PART I, LINE 2:

THE ORGANIZATION RECEIVES PLEDGE REPORTS FROM EACH WORKPLACE GIVING

CAMPAIGN DETAILING THE DONOR DESIGNATION TO MEMBER HEALTH CHARITIES.

COMMUNITY HEALTH CHARITIES DISTRIBUTES CAMPAIGN FUNDS TO MEMBER HEALTH

CHARITIES IN PROPORTION TO THE DONOR DESIGNATIONS RECEIVED. AS ALL

DONATIONS WERE TO 501(C)(3) CHARITIES, NO FURTHER MONITORING IS NECESSARY.

**SCHEDULE J
(Form 990)**

Compensation Information

OMB No. 1545-0047

For certain Officers, Directors, Trustees, Key Employees, and Highest Compensated Employees
 ▶ Complete if the organization answered "Yes" on Form 990, Part IV, line 23.
 ▶ Attach to Form 990.
 ▶ Go to www.irs.gov/Form990 for instructions and the latest information.

2019

Open to Public Inspection

Department of the Treasury
Internal Revenue Service

Name of the organization

CHC: CREATING HEALTHIER COMMUNITIES

Employer identification number

13-6167225

Part I Questions Regarding Compensation

	Yes	No
<p>1a Check the appropriate box(es) if the organization provided any of the following to or for a person listed on Form 990, Part VII, Section A, line 1a. Complete Part III to provide any relevant information regarding these items.</p> <p> <input type="checkbox"/> First-class or charter travel <input type="checkbox"/> Travel for companions <input type="checkbox"/> Tax indemnification and gross-up payments <input type="checkbox"/> Discretionary spending account </p> <p> <input type="checkbox"/> Housing allowance or residence for personal use <input type="checkbox"/> Payments for business use of personal residence <input type="checkbox"/> Health or social club dues or initiation fees <input type="checkbox"/> Personal services (such as maid, chauffeur, chef) </p>		
<p>b If any of the boxes on line 1a are checked, did the organization follow a written policy regarding payment or reimbursement or provision of all of the expenses described above? If "No," complete Part III to explain</p>	1b	
<p>2 Did the organization require substantiation prior to reimbursing or allowing expenses incurred by all directors, trustees, and officers, including the CEO/Executive Director, regarding the items checked on line 1a?</p>	2	
<p>3 Indicate which, if any, of the following the organization used to establish the compensation of the organization's CEO/Executive Director. Check all that apply. Do not check any boxes for methods used by a related organization to establish compensation of the CEO/Executive Director, but explain in Part III.</p> <p> <input type="checkbox"/> Compensation committee <input type="checkbox"/> Independent compensation consultant <input checked="" type="checkbox"/> Form 990 of other organizations </p> <p> <input checked="" type="checkbox"/> Written employment contract <input checked="" type="checkbox"/> Compensation survey or study <input checked="" type="checkbox"/> Approval by the board or compensation committee </p>		
<p>4 During the year, did any person listed on Form 990, Part VII, Section A, line 1a, with respect to the filing organization or a related organization:</p> <p>a Receive a severance payment or change-of-control payment?</p> <p>b Participate in, or receive payment from, a supplemental nonqualified retirement plan?</p> <p>c Participate in, or receive payment from, an equity-based compensation arrangement?</p> <p>If "Yes" to any of lines 4a-c, list the persons and provide the applicable amounts for each item in Part III.</p>	4a	4b
		4c
<p>Only section 501(c)(3), 501(c)(4), and 501(c)(29) organizations must complete lines 5-9.</p> <p>5 For persons listed on Form 990, Part VII, Section A, line 1a, did the organization pay or accrue any compensation contingent on the revenues of:</p> <p>a The organization?</p> <p>b Any related organization?</p> <p>If "Yes" on line 5a or 5b, describe in Part III.</p>	5a	5b
<p>6 For persons listed on Form 990, Part VII, Section A, line 1a, did the organization pay or accrue any compensation contingent on the net earnings of:</p> <p>a The organization?</p> <p>b Any related organization?</p> <p>If "Yes" on line 6a or 6b, describe in Part III.</p>	6a	6b
<p>7 For persons listed on Form 990, Part VII, Section A, line 1a, did the organization provide any nonfixed payments not described on lines 5 and 6? If "Yes," describe in Part III</p>	7	X
<p>8 Were any amounts reported on Form 990, Part VII, paid or accrued pursuant to a contract that was subject to the initial contract exception described in Regulations section 53.4958-4(a)(3)? If "Yes," describe in Part III</p>	8	X
<p>9 If "Yes" on line 8, did the organization also follow the rebuttable presumption procedure described in Regulations section 53.4958-6(c)?</p>	9	

LHA For Paperwork Reduction Act Notice, see the Instructions for Form 990.

Schedule J (Form 990) 2019

Part II Officers, Directors, Trustees, Key Employees, and Highest Compensated Employees. Use duplicate copies if additional space is needed.

For each individual whose compensation must be reported on Schedule J, report compensation from the organization on row (i) and from related organizations, described in the instructions, on row (ii). Do not list any individuals that aren't listed on Form 990, Part VII.

Note: The sum of columns (B)(i)-(iii) for each listed individual must equal the total amount of Form 990, Part VII, Section A, line 1a, applicable column (D) and (E) amounts for that individual.

(A) Name and Title		(B) Breakdown of W-2 and/or 1099-MISC compensation			(C) Retirement and other deferred compensation	(D) Nontaxable benefits	(E) Total of columns (B)(i)-(D)	(F) Compensation in column (B) reported as deferred on prior Form 990
		(i) Base compensation	(ii) Bonus & incentive compensation	(iii) Other reportable compensation				
(1) THOMAS BOGNANNO PRESIDENT & CEO	(i)	324,308.	0.	300.	18,200.	10,451.	353,259.	0.
	(ii)	0.	0.	0.	0.	0.	0.	0.
(2) MOLLY GRAVHOLT COO & CFO	(i)	225,000.	8,000.	300.	14,625.	260.	248,185.	0.
	(ii)	0.	0.	0.	0.	0.	0.	0.
(3) SHELLEY HAYES CHIEF DEVELOPMENT OFFICER	(i)	161,008.	0.	300.	10,466.	6,099.	177,873.	0.
	(ii)	0.	0.	0.	0.	0.	0.	0.
(4) AMANDA PONZAR CHIEF COMMUNICATIONS OFFICER	(i)	168,808.	9,000.	300.	10,972.	260.	189,340.	0.
	(ii)	0.	0.	0.	0.	0.	0.	0.
	(i)							
	(ii)							
	(i)							
	(ii)							
	(i)							
	(ii)							
	(i)							
	(ii)							
	(i)							
	(ii)							
	(i)							
	(ii)							
	(i)							
	(ii)							
	(i)							
	(ii)							
	(i)							
	(ii)							
	(i)							
	(ii)							

Part III Supplemental Information

Provide the information, explanation, or descriptions required for Part I, lines 1a, 1b, 3, 4a, 4b, 4c, 5a, 5b, 6a, 6b, 7, and 8, and for Part II. Also complete this part for any additional information.

PART I, LINE 7:

DISCRETIONARY MERIT BONUSES WERE AWARDED TO MOLLY GRAVHOLT AND AMANDA
PONZAR BY THE CEO FOR RESULTS ACHIEVED IN THE PRIOR FISCAL YEAR. THE BONUS
AMOUNTS WERE BASED ON TOTAL SALARY AND THE RESULTS OF THE EMPLOYEE'S ANNUAL
REVIEW.

SCHEDULE O
(Form 990 or 990-EZ)

Department of the Treasury
Internal Revenue Service

Supplemental Information to Form 990 or 990-EZ

Complete to provide information for responses to specific questions on
Form 990 or 990-EZ or to provide any additional information.

▶ Attach to Form 990 or 990-EZ.

▶ Go to www.irs.gov/Form990 for the latest information.

OMB No. 1545-0047

2019

Open to Public
Inspection

Name of the organization

CHC: CREATING HEALTHIER COMMUNITIES

Employer identification number

13-6167225

FORM 990, PART I, LINE 1, DESCRIPTION OF ORGANIZATION MISSION:

CHC: CREATING HEALTHIER COMMUNITIES (FORMERLY KNOWN AS COMMUNITY HEALTH

CHARITIES) EXISTS TO EMPOWER PEOPLE TO TAKE ACTION TO IMPROVE HEALTH

AND WELLBEING.

FORM 990, PART III, LINE 1, DESCRIPTION OF ORGANIZATION MISSION:

CHC: CREATING HEALTHIER COMMUNITIES (FORMERLY KNOWN AS COMMUNITY HEALTH

CHARITIES/THE "ORGANIZATION") IS A NATIONAL NONPROFIT THAT BUILDS

STRONGER, HEALTHIER COMMUNITIES AND EMPOWERS PEOPLE TO TAKE ACTION TO

IMPROVE HEALTH AND WELLBEING. THE ORGANIZATION DOES THIS BY RAISING

FUNDS AND AWARENESS TO SUPPORT HEALTH EDUCATION, PREVENTION, AND

TREATMENT; BY REPRESENTING AND BUILDING CAPACITY FOR NONPROFIT CHARITY

PARTNERS AND DRIVING SUPPORTERS TO THEIR CAUSE; BY ENGAGING FEDERAL

EMPLOYEES IN THE COMBINED FEDERAL CAMPAIGN; AND BY ENGAGING PUBLIC

SECTOR AND PRIVATE SECTOR ORGANIZATIONS AND THEIR EMPLOYEES IN

WORKPLACE GIVING CAMPAIGNS, CUSTOM GIVING OPPORTUNITIES, VOLUNTEERING,

AND STRATEGIC PARTNERSHIPS.

FORM 990, PART VI, SECTION B, LINE 11B:

THE FORM 990 IS PRESENTED TO THE AUDIT COMMITTEE AS PART OF THE FINANCIAL

STATEMENT APPROVAL PROCESS. THEREAFTER, A COPY OF THE FORM 990 IS PROVIDED

TO THE BOARD VIA EMAIL.

FORM 990, PART VI, SECTION B, LINE 12C:

LHA For Paperwork Reduction Act Notice, see the Instructions for Form 990 or 990-EZ.

Schedule O (Form 990 or 990-EZ) (2019)

Name of the organization CHC: CREATING HEALTHIER COMMUNITIES	Employer identification number 13-6167225
---	--

THE BOARD IS REQUIRED TO DISCLOSE ANY CONFLICTS OF INTEREST. CONFLICTS OF INTEREST STATEMENTS ARE SIGNED ANNUALLY BY EACH BOARD MEMBER. IN ADDITION, BOARD MEMBERS HAVE THE OBLIGATION TO UPDATE THE CONFLICT OF INTEREST STATEMENTS IF CIRCUMSTANCES CHANGE DURING THE YEAR. IN THE EVENT OF A CONFLICT, THE INDIVIDUAL INVOLVED WILL RECUSE THEMSELVES FROM ANY VOTE ON THE MATTER.

FORM 990, PART VI, SECTION B, LINE 15:
SALARY AND PERFORMANCE EVALUATIONS ARE DETERMINED BY THE EXECUTIVE COMMITTEE ANNUALLY FOR THE CEO. THE COMMITTEE REVIEWS CURRENT SALARY AND COMPARES WITH OTHER NON-PROFIT ORGANIZATIONS OF SIMILAR SIZE AND MISSION.

FORM 990, PART VI, LINE 17, LIST OF STATES RECEIVING COPY OF FORM 990:
AL, AR, CA, CT, FL, GA, HI, IL, KS, KY, MD, MA, MI, MN, MS, NH, NJ, NM, NY, NC, OR, PA, RI, SC, TN
UT, VA, WV, WI

FORM 990, PART VI, SECTION C, LINE 19:
THE GOVERNING DOCUMENTS AND CONFLICT OF INTEREST POLICY ARE AVAILABLE UPON REQUEST. THE FINANCIAL STATEMENTS ARE AVAILABLE ON THE ORGANIZATION'S OWN WEBSITE.

**SCHEDULE R
(Form 990)**

Related Organizations and Unrelated Partnerships

OMB No. 1545-0047

▶ **Complete if the organization answered "Yes" on Form 990, Part IV, line 33, 34, 35b, 36, or 37.**
▶ **Attach to Form 990.**

2019

Open to Public Inspection

Department of the Treasury
Internal Revenue Service

▶ **Go to www.irs.gov/Form990 for instructions and the latest information.**

Name of the organization **CHC: CREATING HEALTHIER COMMUNITIES** Employer identification number **13-6167225**

Part I Identification of Disregarded Entities. Complete if the organization answered "Yes" on Form 990, Part IV, line 33.

(a) Name, address, and EIN (if applicable) of disregarded entity	(b) Primary activity	(c) Legal domicile (state or foreign country)	(d) Total income	(e) End-of-year assets	(f) Direct controlling entity

Part II Identification of Related Tax-Exempt Organizations. Complete if the organization answered "Yes" on Form 990, Part IV, line 34, because it had one or more related tax-exempt organizations during the tax year.

(a) Name, address, and EIN of related organization	(b) Primary activity	(c) Legal domicile (state or foreign country)	(d) Exempt Code section	(e) Public charity status (if section 501(c)(3))	(f) Direct controlling entity	(g) Section 512(b)(13) controlled entity?	
						Yes	No
NEIGHBOR TO NATION - 54-1879282 1199 N. FAIRFAX ST. SUITE 600 ALEXANDRIA, VA 22314	WORKPLACE FUND DRIVES	VIRGINIA	501(C)(3)	LINE 7	CHC: CREATING HEALTHIER COMMUNITIES	X	
HUMAN SERVICE CHARITIES OF AMERICA, INC. - 94-3240353, 1199 N. FAIRFAX ST. SUITE 600, ALEXANDRIA, VA 22314	WORKPLACE FUND DRIVES	CALIFORNIA	501(C)(3)	LINE 7	CHC: CREATING HEALTHIER COMMUNITIES	X	
CHRISTIAN SERVICE CHARITIES, INC. - 94-3193374, 1199 N. FAIRFAX ST. SUITE 600, ALEXANDRIA, VA 22314	FACILITATING INCLUSION OF CHRISTIAN CHARITIES IN GIVING OPPORTUNITIES	CALIFORNIA	501(C)(3)	LINE 7	CHC: CREATING HEALTHIER COMMUNITIES	X	
CHC: CREATING HEALTHIER COMMUNITIES, LOCAL (FKA CHC, LOCAL) - 85-0258784, 1199 N. FAIRFAX ST. SUITE 600, ALEXANDRIA, VA 22314	BUILDING AWARENESS OF AND FINANCIAL SUPPORT FOR MEMBER HEALTH AGENCIES	VIRGINIA	501(C)(3)	LINE 7	CHC: CREATING HEALTHIER COMMUNITIES	X	

For Paperwork Reduction Act Notice, see the Instructions for Form 990.

Schedule R (Form 990) 2019

Part III Identification of Related Organizations Taxable as a Partnership. Complete if the organization answered "Yes" on Form 990, Part IV, line 34, because it had one or more related organizations treated as a partnership during the tax year.

(a) Name, address, and EIN of related organization	(b) Primary activity	(c) Legal domicile (state or foreign country)	(d) Direct controlling entity	(e) Predominant income (related, unrelated, excluded from tax under sections 512-514)	(f) Share of total income	(g) Share of end-of-year assets	(h) Disproportionate allocations?		(i) Code V-UBI amount in box 20 of Schedule K-1 (Form 1065)	(j) General or managing partner?		(k) Percentage ownership
							Yes	No		Yes	No	

Part IV Identification of Related Organizations Taxable as a Corporation or Trust. Complete if the organization answered "Yes" on Form 990, Part IV, line 34, because it had one or more related organizations treated as a corporation or trust during the tax year.

(a) Name, address, and EIN of related organization	(b) Primary activity	(c) Legal domicile (state or foreign country)	(d) Direct controlling entity	(e) Type of entity (C corp, S corp, or trust)	(f) Share of total income	(g) Share of end-of-year assets	(h) Percentage ownership	(i) Section 512(b)(13) controlled entity?	
								Yes	No

Part V Transactions With Related Organizations. Complete if the organization answered "Yes" on Form 990, Part IV, line 34, 35b, or 36.

Note: Complete line 1 if any entity is listed in Parts II, III, or IV of this schedule.

1 During the tax year, did the organization engage in any of the following transactions with one or more related organizations listed in Parts II-IV?

	Yes	No
1a Receipt of (i) interest, (ii) annuities, (iii) royalties, or (iv) rent from a controlled entity		X
1b Gift, grant, or capital contribution to related organization(s)		X
1c Gift, grant, or capital contribution from related organization(s)	X	
1d Loans or loan guarantees to or for related organization(s)		X
1e Loans or loan guarantees by related organization(s)		X
1f Dividends from related organization(s)		X
1g Sale of assets to related organization(s)		X
1h Purchase of assets from related organization(s)		X
1i Exchange of assets with related organization(s)		X
1j Lease of facilities, equipment, or other assets to related organization(s)		X
1k Lease of facilities, equipment, or other assets from related organization(s)		X
1l Performance of services or membership or fundraising solicitations for related organization(s)	X	
1m Performance of services or membership or fundraising solicitations by related organization(s)		X
1n Sharing of facilities, equipment, mailing lists, or other assets with related organization(s)		X
1o Sharing of paid employees with related organization(s)		X
1p Reimbursement paid to related organization(s) for expenses		X
1q Reimbursement paid by related organization(s) for expenses		X
1r Other transfer of cash or property to related organization(s)		X
1s Other transfer of cash or property from related organization(s)		X

2 If the answer to any of the above is "Yes," see the instructions for information on who must complete this line, including covered relationships and transaction thresholds.

(a) Name of related organization	(b) Transaction type (a-s)	(c) Amount involved	(d) Method of determining amount involved
(1) CHC: CREATING HEALTHIER COMMUNITIES, LOCAL (FKA CHC, LOCAL)	L	230,352.	COST
(2) CHRISTIAN SERVICE CHARITIES, INC.	C	756,738.	COST
(3) HUMAN SERVICE CHARITIES OF AMERICA, INC.	C	95,508.	COST
(4) NEIGHBOR TO NATION	C	408,351.	COST
(5)			
(6)			

Part VI Unrelated Organizations Taxable as a Partnership. Complete if the organization answered "Yes" on Form 990, Part IV, line 37.

Provide the following information for each entity taxed as a partnership through which the organization conducted more than five percent of its activities (measured by total assets or gross revenue) that was not a related organization. See instructions regarding exclusion for certain investment partnerships.

(a) Name, address, and EIN of entity	(b) Primary activity	(c) Legal domicile (state or foreign country)	(d) Predominant income (related, unrelated, excluded from tax under sections 512-514)	(e) Are all partners sec 501(c)(3) orgs.?		(f) Share of total income	(g) Share of end-of-year assets	(h) Dispropor- tionate allocations?		(i) Code V-UBI amount in box 20 of Schedule K-1 (Form 1065)	(j) General or managing partner?		(k) Percentage ownership
				Yes	No			Yes	No		Yes	No	

Application for Automatic Extension of Time To File an Exempt Organization Return

OMB No. 1545-0047

Department of the Treasury
Internal Revenue Service

▶ **File a separate application for each return.**
▶ **Go to www.irs.gov/Form8868 for the latest information.**

Electronic filing (e-file). You can electronically file Form 8868 to request a 6-month automatic extension of time to file any of the forms listed below with the exception of Form 8870, Information Return for Transfers Associated With Certain Personal Benefit Contracts, for which an extension request must be sent to the IRS in paper format (see instructions). For more details on the electronic filing of this form, visit www.irs.gov/e-file-providers/e-file-for-charities-and-non-profits.

Automatic 6-Month Extension of Time. Only submit original (no copies needed).

All corporations required to file an income tax return other than Form 990-T (including 1120-C filers), partnerships, REMICs, and trusts must use Form 7004 to request an extension of time to file income tax returns.

Type or print	Name of exempt organization or other filer, see instructions. CHC: CREATING HEALTHIER COMMUNITIES	Taxpayer identification number (TIN) 13-6167225
File by the due date for filing your return. See instructions.	Number, street, and room or suite no. If a P.O. box, see instructions. 1199 N. FAIRFAX STREET, SUITE 600	
	City, town or post office, state, and ZIP code. For a foreign address, see instructions. ALEXANDRIA, VA 22314	

Enter the Return Code for the return that this application is for (file a separate application for each return) 0 1

Application Is For	Return Code	Application Is For	Return Code
Form 990 or Form 990-EZ	01	Form 990-T (corporation)	07
Form 990-BL	02	Form 1041-A	08
Form 4720 (individual)	03	Form 4720 (other than individual)	09
Form 990-PF	04	Form 5227	10
Form 990-T (sec. 401(a) or 408(a) trust)	05	Form 6069	11
Form 990-T (trust other than above)	06	Form 8870	12

MOLLY GRAVHOLT

- The books are in the care of ▶ 1199 N. FAIRFAX STREET, SUITE 600 - ALEXANDRIA, VA 22314
Telephone No. ▶ 703-528-1007 Fax No. ▶
- If the organization does not have an office or place of business in the United States, check this box
- If this is for a Group Return, enter the organization's four digit Group Exemption Number (GEN) _____ . If this is for the whole group, check this box . If it is for part of the group, check this box and attach a list with the names and TINs of all members the extension is for.

1 I request an automatic 6-month extension of time until MAY 17, 2021, to file the exempt organization return for the organization named above. The extension is for the organization's return for:
 ▶ calendar year _____ or
 ▶ tax year beginning JUL 1, 2019, and ending JUN 30, 2020.

2 If the tax year entered in line 1 is for less than 12 months, check reason: Initial return Final return
 Change in accounting period

3a If this application is for Forms 990-BL, 990-PF, 990-T, 4720, or 6069, enter the tentative tax, less any nonrefundable credits. See instructions.	3a	\$	0.
3b If this application is for Forms 990-PF, 990-T, 4720, or 6069, enter any refundable credits and estimated tax payments made. Include any prior year overpayment allowed as a credit.	3b	\$	0.
3c Balance due. Subtract line 3b from line 3a. Include your payment with this form, if required, by using EFTPS (Electronic Federal Tax Payment System). See instructions.	3c	\$	0.

Caution: If you are going to make an electronic funds withdrawal (direct debit) with this Form 8868, see Form 8453-EO and Form 8879-EO for payment instructions.

LHA **For Privacy Act and Paperwork Reduction Act Notice, see instructions.**
 MAIL TO: DEPARTMENT OF THE TREASURY
 INTERNAL REVENUE SERVICE CENTER
 OGDEN, UT 84201-0045

Form **8868** (Rev. 1-2020)

GOVERNMENT OF THE DISTRICT OF COLUMBIA
DEPARTMENT OF CONSUMER AND REGULATORY AFFAIRS
CORPORATIONS DIVISION



C E R T I F I C A T E

THIS IS TO CERTIFY that the attached is a true and correct copy of the documents for this entity as shown by the records of this office.

CHC: CREATING HEALTHIER COMMUNITIES

IN TESTIMONY WHEREOF I have hereunto set my hand and caused the seal of this office to be affixed as of 11/11/2020 6:57 AM

Business and Professional Licensing Administration



Josef G. Gasimov

JOSEF G. GASIMOV
Superintendent of Corporations,
Corporations Division

Muriel Bowser
Mayor

Tracking #: YLEJsRRT

GOVERNMENT OF THE DISTRICT OF COLUMBIA
DEPARTMENT OF CONSUMER AND REGULATORY AFFAIRS
CORPORATIONS DIVISION



CERTIFICATE

THIS IS TO CERTIFY that all applicable provisions of the District of Columbia Business Organizations Code have been complied with and accordingly, this **CERTIFICATE OF AMENDMENT** is hereby issued to:

CHC: CREATING HEALTHIER COMMUNITIES

Effective Date: 10/7/2020

IN WITNESS WHEREOF I have hereunto set my hand and caused the seal of this office to be affixed as of 10/15/2020 10:26 AM

Business and Professional Licensing Administration

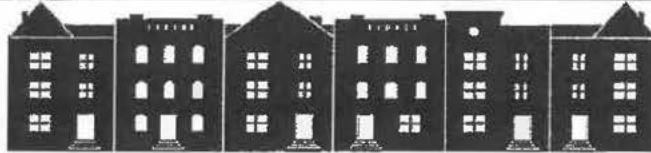


Josef G. Gasimov

JOSEF G. GASIMOV
Superintendent of Corporations,
Corporations Division

Muriel Bowser
Mayor

Tracking #: 5SmP6mBv



DEPARTMENT OF CONSUMER & REGULATORY AFFAIRS
District of Columbia Government
Corporations Division

Articles of Amendment of Domestic Nonprofit Corporation
Form DNP-2, Version 3, April 2013

Under the provisions of the Title 29 of D.C. Code (Business Organizations Act), the domestic filing entity listed below hereby applies for a Certificate of Amendment and for that purpose submits the statement below.

1. Corporation Name.
CHC: CREATING HEALTHIER COMMUNITIES

2. The text of each amendment adopted.

the FIRST Article was amended to read:

FIRST: The name of the corporation is: CHC: CREATING HEALTHIER COMMUNITIES.

3. If the amendment provides for an exchange, reclassification, or cancellation of memberships, provisions for implementing the amendment.

4. The date of each amendment's adoption.
9/3/2020 12:00:00 AM

5. Amendment has been adopted in the following manner.
The amendment was duly approved by the incorporators or by the board of directors, as the case may be, and that shareholder approval was not required.

If you sign this form you agree that anyone who makes a false statement can be punished by criminal penalties of a fine up to \$1000, imprisonment up to 180 days, or both, under DCOC § 22-2405.

Name of the Governor or Authorized Person	Date	Signature
Bognanno G. Thomas	10/15/2020 10:26:17 AM	ESIGNED
Molly Gravholt	10/15/2020 10:26:17 AM	

Mail all forms and required payment to:
Department of Consumer and Regulatory Affairs
Corporations Division
PO Box 92300
Washington, DC 20006
Phone: (202) 442-4400

Corporate Online Services Information:
Many corporate filings are available by using CorpOnline Service. Go to CorpOnline site at <https://corp.dcr.dcgov>, create a profile, access the online services main page and proceed. Online filers must pay by using a credit card.

CINCINNATI OH 45999-0038

In reply refer to: 0248254921
Dec. 19, 2016 LTR 4167C 0
13-6167225 000000 00
00018992
BODC: TE

COMMUNITY HEALTH CHARITIES
PARENT ORGANIZATION
% MOLLY GRAVHOLT
1199 N FAIRFAX ST STE 600
ALEXANDRIA VA 22314



022968

Employer identification number: 13-6167225
Group exemption number: 3071

Dear Taxpayer:

This is in response to your request dated Dec. 08, 2016, for information about your tax-exempt status.

Our records indicate we issued a determination letter to you in August 1985, and you're currently exempt under Internal Revenue Code (IRC) Section 501(c)(3).

We also recognized the subordinates on the list you submitted as exempt from federal income tax under IRC Section 501(c)(3).

For federal income tax purposes, donors can deduct contributions they make to you as provided in IRC Section 170. You're also qualified to receive tax deductible bequests, legacies, devises, transfers, or gifts under IRC Sections 2055, 2106 and 2522.

Because IRC Section 170(c) describes your subordinate organizations, donors can deduct contributions they make to them.

Please refer to www.irs.gov/charities for information about filing requirements. Specifically, IRC Section 6033(j) provides that, if you don't file a required return or notice for three consecutive years, your exempt status will be automatically revoked on the filing due date of the third required return or notice.

In addition, each subordinate organization is subject to automatic revocation if it doesn't file a required return or notice for three consecutive years. Subordinate organizations can file required returns or notices individually or as part of a group return.

For tax forms, instructions, and publications, visit www.irs.gov or call 1-800-TAX-FORM (1-800-829-3676).

If you have questions, call 1-877-829-5500 between 8 a.m. and 5 p.m., local time, Monday through Friday (Alaska and Hawaii follow Pacific Time).

0248254921
Dec. 19, 2016 LTR 4167C 0
13-6167225 000000 00
00018993

COMMUNITY HEALTH CHARITIES
PARENT ORGANIZATION
% MOLLY GRAVHOLT
1199 N FAIRFAX ST STE 600
ALEXANDRIA VA 22314

Sincerely yours,



Kim A. Billups, Operations Manager
Accounts Management Operations 1

Account Name	Brochure	Federal EIN	Main Phone	Website	County
Alisa Ann Ruch Burn Foundation, California, Fresno	B00215	237162017	559-621-4016	http://aarbf.org/About-Us/About-Us.htm	Fresno County
Alisa Ann Ruch Burn Foundation, California, Pasadena	B00216	237162017	818-848-0223	https://www.aarbf.org/	Los Angeles County
Alisa Ann Ruch Burn Foundation, California, San Francisco	B00217	237162017	415-495-7223	http://www.aarbf.org/index.htm	Contra Costa County
ALS Association, California, Golden West Chapter, Agoura Hills	B00154	954163338	818-865-8067	http://www.alsagoldenwest.org	Los Angeles County
ALS Association, California, Golden West Chapter, Fresno	B00155	954163338	209-586-8323	http://www.alsagoldenwest.org	Fresno County
ALS Association, California, Golden West Chapter, Oakland	B00229	954163338	510-251-2572	http://www.alsagoldenwest.org	Alameda County
ALS Association, California, Golden West Chapter, Royal Oaks	B00230	954163338	818-865-8067	http://www.alsagoldenwest.org	Monterey County
ALS Association, California, Greater Sacramento Chapter, Sacramento	B00232	680159292	916-979-9265	www.alsac.org	Sacramento County
Alzheimer's Association, California, California Central Chapter	B00295	133039601	805-892-4259	http://www.alz.org	Santa Barbara County
Alzheimer's Association, California, California Southland Chapter	B07432	133039601	323-309-8821	http://www.alz.org	Los Angeles County
Alzheimer's Association, California, Northern California and Northern Nevada	B00302	133039601	408-372-9900	http://www.alz.org	Santa Cruz County
Alzheimer's Association, California, Orange County Chapter	B07444	133039601	949-426-8544	http://www.alz.org	Orange County
Alzheimer's Association, California, San Diego Imperial Chapter	B00305	133039601	619-678-8322	http://www.alz.org	San Diego County
Alzheimer's Greater Los Angeles	B00311	953718119	323-930-6228	https://www.alzheimersla.org	Los Angeles County
Alzheimer's Greater Los Angeles, Rancho Mirage	B00312	953718119	323-938-3379	http://www.alzsla.org	Riverside County
American Cancer Society, California, West Region, Los Angeles Market	B15063	131788491	310-348-0357	http://www.cancer.org	Los Angeles County
American Cancer Society, California, West Region, Sacramento Market	B15066	131788491	916-561-2900	http://www.cancer.org	Sacramento County
American Cancer Society, California, West Region, San Francisco Market	B15062	131788491	510-893-7900	http://www.cancer.org	Alameda County
American Cancer Society, California, West Region, San Jose Market	B15067	131788491	408-688-0114	https://www.cancer.org	Santa Clara County
American Diabetes Association, California, Los Angeles	B00640	131623888	323-966-2890	http://www.diabetes.org	Los Angeles County
American Diabetes Association, California, Oakland	B00641	131623888	510-654-4499	http://www.diabetes.org	Alameda County
American Heart Association, California, Western States Affiliate, Fresno	B00732	135613797	559-435-5246	http://www.heart.org	Fresno County
American Heart Association, California, Western States Affiliate, La Jolla	B00733	135613797	858-410-3850	http://www.heart.org	San Diego County
American Heart Association, California, Western States Affiliate, Los Angeles	B00734	135613797	213-291-7000	http://www.heart.org	Los Angeles County
American Heart Association, California, Western States Affiliate, Sacramento	B00735	135613797	916-446-6505	http://www.heart.org	Sacramento County
American Lung Association of California, Chico	B00936	131632524	530-345-5864	http://www.lung.org/california	Butte County
American Lung Association of California, Fresno	B00864	131632524	559-772-3307	http://www.lung.org/california	Fresno County
American Lung Association of California, Greater Los Angeles	B00873	131632524	714-835-5864	http://www.lung.org/california	Los Angeles County
American Lung Association of California, Oakland	B00874	131632524	510-638-5864	http://www.lung.org/california	Alameda County
American Lung Association of California, Sacramento	B00862	131632524	916-554-5864	http://www.lung.org/california	Sacramento County
American Lung Association of California, San Bernardino	B07642	131632524	310-735-9492	http://www.lung.org/california	San Bernardino County
American Lung Association of California, San Diego	B00875	131632524	619-297-3901	http://www.lung.org/california	San Diego County
American Lung Association of California, Tustin	B00867	131632524	510-638-5864	http://www.lung.org/california	Orange County

Angel Flight West	B00965	953956297	310-390-2958	http://www.angelflightwest.org	Los Angeles County
Arthritis Foundation, California, Great West Region, Carmel	B01025	581341679	916-368-5599	http://www.arthritis.org	Monterey County
Arthritis Foundation, California, Great West Region, San Francisco	B01026	581341679	206-547-2707	http://www.arthritis.org	San Francisco County
Arthritis Foundation, California, Pacific Region, Los Angeles	B01028	581341679	323-954-5750	http://www.arthritis.org/california	Los Angeles County
Arthritis Foundation, California, Pacific Region, Sacramento	B01030	581341679	916-368-5599	http://www.arthritis.org	Sacramento County
Arthritis Foundation, California, Pacific Region, San Diego	B01031	581341679	858-492-1090	http://www.arthritis.org	San Diego County
Autism Speaks, California	B01147	202329938	323-549-0500	http://www.autismspeaks.org	Los Angeles County
Burn Institute	B01356	237260718	858-541-2277	http://www.burninstitute.org	San Diego County
California Hospice and Palliative Care Association	B01376	942900226	916-925-3770	www.calhospice.org	Sacramento County
Children's Food Fund / World Emergency Relief	B01535	954014743	909-593-7140	https://www.WER-US.org	Los Angeles County
City of Hope	B00098	953435919	626-218-0278	http://www.cityofhope.org	Los Angeles County
Conard House, Inc.	B18669	941489356	415-346-6380	https://www.conardhouse.org	San Francisco County
Crohn's & Colitis Foundation, California, Greater Los Angeles Chapter	B01723	136193105	310-478-4500	http://www.crohnscolitisfoundation.org	Los Angeles County
Crohn's & Colitis Foundation, California, Greater San Diego and Desert Area Chapter	B01724	136193105	619-497-1300	http://www.crohnscolitisfoundation.org	San Diego County
Crohn's & Colitis Foundation, California, Northern California Chapter	B01725	136193105	415-356-2232	http://www.crohnscolitisfoundation.org	San Francisco County
Crohn's & Colitis Foundation, California, Orange County Chapter	B01726	136193105	310-478-4500	http://www.crohnscolitisfoundation.org	Orange County
Cystic Fibrosis Foundation, California, Northern California Chapter, San Francisco	B01787	131930701	415-989-6500	http://www.cff.org/NCA	San Francisco County
Cystic Fibrosis Foundation, California, Sacramento Chapter, Sacramento	B01788	131930701	916-349-1243	http://www.cff.org/Sacramento	Sacramento County
Cystic Fibrosis Foundation, California, San Diego and Imperial Counties Chapter, San Diego	B01789	131930701	858-452-2873	http://www.cff.org/SanDiego	San Diego County
Cystic Fibrosis Foundation, California, Southern California Chapter, Santa Ana	B01790	131930701	714-938-1393	http://www.cff.org/SCA	Orange County
Cystic Fibrosis Foundation, California, Southern California Los Angeles Chapter, Los Angeles	B01786	131930701	323-939-0758	http://www.cff.org	Los Angeles County
Cystic Fibrosis Research, Inc.	B01847	510169988	650-665-7586	https://www.cfri.org	Santa Clara County
Easterseals, California, So Cal	B01971	943068149	714-834-1111	https://www.easterseals.com/southernca	Orange County
Easterseals, California, So Cal Bakersfield	B01967	943068149	714-834-1111	https://www.easterseals.com/southernca	Kern County
Easterseals, California, So Cal Escondido	B01969	943068149	714-834-1111	https://www.easterseals.com/southernca	San Diego County
Epilepsy Foundation of Northern California	B02078	946128891	510-922-8687	http://www.epilepsynorcal.org	Alameda County
Epilepsy Foundation, California, Long Beach	B17829	520856660	800-332-1000	https://www.epilepsy.com/	Los Angeles County
Gardner Family Health Network	B15048	941743078	408-200-2291	https://gardnerhealthservices.org/	Santa Clara County
Glaucoma Research Foundation	B02328	942495035	415-986-3162	http://www.glaucoma.org	San Francisco County
Hands at Work in Africa (USA)	B19374	261213083	650-731-2626	https://www.handsatwork.org/	Contra Costa County
Hospice Giving Foundation	B02494	942404634	831-333-9023	http://www.hospicegiving.org	Monterey County
JDRF International, California, Los Angeles Chapter	B02666	231907729	213-233-9901	http://www.jdrf.org	Los Angeles County
JDRF International, California, Northern California Inland Chapter	B02667	231907729	916-920-0790	http://www.jdrf.org	Sacramento County
JDRF International, California, Orange County Chapter	B02669	231907729	949-553-0363	http://www.jdrf.org	Orange County

JDRF International, California, San Diego Chapter	B02670	231907729	858-597-0240	http://www.jdrf.org	San Diego County
Kids for the Kingdom	B02821	680421846	707-829-5504	https://www.kidsforthekingdom.org	Sonoma County
Leukemia & Lymphoma Society, California, California Southland Chapter	B02889	135644916	310-342-5800	http://www.lls.org	Los Angeles County
Leukemia & Lymphoma Society, California, Central California Chapter	B02891	135644916	559-435-1482	http://www.lls.org/cca	Fresno County
Leukemia & Lymphoma Society, California, Central California, Bakersfield Chapter	B02890	135644916	661-845-2710	http://www.lls.org/cca	Kern County
Leukemia & Lymphoma Society, California, Greater Bay Area Chapter	B02893	135644916	415-625-1100	http://www.lls.org/gba	San Francisco County
Leukemia & Lymphoma Society, California, Greater Sacramento Area Chapter	B15091	135644916	916-929-4720	https://www.lls.org	Sacramento County
Leukemia & Lymphoma Society, California, Orange County Inland Empire Chapter	B15100	135644916	714-481-5600	http://www.lls.org/orange-county-inland-	Orange County
Leukemia & Lymphoma Society, California, San Diego & Hawaii Chapter	B02895	135644916	858-427-6848	https://www.lls.org/san-diego-hawaii	San Diego County
March of Dimes, California, Fresno	B03102	131846366	559-244-5777	http://www.marchofdimes.org/california	Fresno County
March of Dimes, California, Los Angeles	B03105	131846366	818-539-2195	http://www.marchofdimes.org	Los Angeles County
March of Dimes, California, Orange County	B03107	131846366	949-263-1100	http://www.marchofdimes.org	Orange County
March of Dimes, California, Riverside	B03106	131846366	951-341-0903	http://www.marchofdimes.org	Riverside County
March of Dimes, California, Sacramento	B03104	131846366	916-922-1913	www.marchofdimes.org	Sacramento County
March of Dimes, California, San Francisco	B03101	131846366	415-788-2202	http://www.marchofdimes.org	San Francisco County
March of Dimes, California, San Jose	B03109	131846366	408-260-7629	http://www.marchofdimes.org	Santa Clara County
MAZON: A Jewish Response to Hunger	B03242	222624532	310-442-0020	http://mazon.org	Los Angeles County
Muscular Dystrophy Association, California, Fresno	B03390	131665552	559-453-9822	http://www.mda.org	Fresno County
Muscular Dystrophy Association, California, LA Region, Alameda	B07414	131665552	415-673-7500	http://www.mda.org	Alameda County
Muscular Dystrophy Association, California, LA Region, Culver City	B07412	131665552	310-398-4738	http://www.mda.org	Los Angeles County
Muscular Dystrophy Association, California, LA Region, San Diego	B07413	131665552	858-492-1282	http://www.mda.org	San Diego County
Muscular Dystrophy Association, California, Sacramento	B03391	131665552	916-921-9518	http://www.mda.org	Sacramento County
National Kidney Foundation, California, West, Northern California/Pacific Northwest	B03613	131673104	415-543-3303	http://www.kidney.org	San Francisco County
National Kidney Foundation, California, West, Southern California and Nevada	B03614	131673104	415-543-3303	http://www.kidney.org	Los Angeles County
National Multiple Sclerosis Society, California, Northern CA, Sacramento	B16648	135661935	916-922-4583	https://www.nationalmssociety.org/Chap	Sacramento County
National Multiple Sclerosis Society, California, Pacific South Coast, San Diego	B03666	135661935	800-344-4867	http://www.nationalmssociety.org	San Diego County
National Multiple Sclerosis Society, California, Pacific South Coast, Santa Ana	B03667	135661935	800-344-4867	http://www.nationalmssociety.org	Orange County
National Multiple Sclerosis Society, California, Southern CA-Nevada, Los Angeles	B03671	135661935	800-344-4867	http://www.nationalmssociety.org	Los Angeles County
New Horizons Serving Individuals with Special Needs	B03794	951862084	818-894-9301	http://www.newhorizons-sfv.org	Los Angeles County
Open Medicine Foundation	B10047	264712664	650-242-8669	http://www.omf.ngo	Los Angeles County
Opportunity Junction	B03896	680459131	925-776-1133	https://www.OpportunityJunction.org	Contra Costa County
Pancreatic Cancer Action Network	B00127	330841281	310-725-0025	http://www.pancan.org	Los Angeles County
Planned Parenthood Mar Monte, Inc., California, Coast Regional Office, Seaside	B04014	941583439	831-783-6319	http://www.ppmarmonte.org	Monterey County
Planned Parenthood Mar Monte, Inc., California, Fresno Regional Office, Fresno	B04015	941583439	559-446-1515	http://www.ppmarmonte.org	Fresno County

Planned Parenthood Mar Monte, Inc., California, Sacramento Regional Office, Sacramento	B04016	941583439	916-325-1732	http://www.ppmarmonte.org	Sacramento County
Planned Parenthood Mar Monte, Inc., California, San Jose Regional Office, San Jose	B04017	941583439	408-795-3600	http://www.ppmarmonte.org	Santa Clara County
Ronald McDonald House Charities of Southern California	B04177	953167869	323-666-6400	http://www.rmhcsc.org	Los Angeles County
Self Help For The Elderly	B04309	941750717	415-677-7600	https://www.selfhelpelderly.org	San Francisco County
St. Jude Children's Research Hospital, California (serving Northern California)	B04519	351044585	415-590-5350	http://www.stjude.org	San Francisco County
St. Jude Children's Research Hospital, California (serving Southern California & Hawaii)	B04520	351044585	714-643-7000	http://www.stjude.org	Orange County
Susan G. Komen, California, Inland Empire Affiliate	B04625	330802964	951-676-7465	http://www.komenie.org	Riverside County
Susan G. Komen, California, Los Angeles County Affiliate	B04626	954582064	310-575-3011	https://komenlacounty.org	Los Angeles County
Susan G. Komen, California, Orange County Affiliate	B04627	330487943	949-957-9157	http://www.komenoc.org	Orange County
Susan G. Komen, California, Sacramento Valley Affiliate	B04628	943169358	916-231-3148	http://www.komennccalifornia.org/	Sacramento County
Susan G. Komen, California, San Diego Chapter	B04629	330638911	858-573-2760	https://www.komensandiego.org	San Diego County
Susan G. Komen, California, San Francisco Bay	B09969	943047626	415-397-8812	http://www.komensf.org	San Francisco County
The Painted Turtle	B04794	954612481	310-451-1353	http://www.thepaintedturtle.org	Los Angeles County
United Cerebral Palsy of Los Angeles & Ventura Counties	B04919	951648203	818-782-2211	https://www.ucpla.org	Los Angeles County

Account Name	Brochure Code	Federal EIN
A Child's Feeding Fund	B00550	453839595
Adopt America Network	B16613	341396924
AIDS Research Foundation (amfAR)	B00065	133163817
Alliance Defending Freedom	B10110	541660459
Alliance for Cancer Gene Therapy, Inc.	B07302	061619523
ALS Association	B00079	133271855
Alzheimer's Association	B00080	133039601
Amen Foundation	B16635	521837798
American Bible Society	B00446	131623885
American Cancer Society	B00081	131788491
American Council of the Blind	B16614	580914436
American Diabetes Association	B00082	131623888
American Family Association	B00722	640607275
American Foundation for Suicide Prevention	B00723	133393329
American Heart Association	B00084	135613797
American Kidney Fund	B00085	237124261
American Liver Foundation	B00086	362883000
American Lung Association	B00087	131632524
American Parkinson Disease Association	B00088	131962771
Arbor Day Foundation	B07703	237169265
Arthritis Foundation	B00089	581341679
Autism Speaks	B00090	202329938
Baptist World Alliance	B16611	530204667
Be The Match Foundation	B00091	411704734
Black Women's Health Imperative	B01258	581557556
Blessings International	B16612	731130590
Breast Cancer Research Foundation, Inc.	B01321	133727250
Bridgeport Caribe Youth Leaders	B17822	200421577
Cadence International	B16615	846027655
Campus Crusade for Christ's Great Commission Foundation	B16636	952814920
Cancer Research Institute	B00092	131837442
Care Net	B01435	541382723
Cerebral Palsy Foundation	B00094	136093337
CHC: Creating Healthier Communities	B00024	136167225
Childcare Worldwide	B01520	953619910
Children's Cancer Assistance Fund	B16617	371227890
Children's Food Fund / World Emergency Relief	B01535	954014743
Children's Heart Foundation	B00096	364077528
Children's Hospital Foundation	B18391	521640402
Children's Tumor Foundation	B00097	132298956
Christian Military Fellowship	B16620	840780545
Christian Relief Fund	B16621	510183054
Christian World Outreach	B16622	841445744
Citygate Network	B16609	550479715
Colorectal Cancer Alliance	B00099	860947831
Convoy of Hope	B01691	680051386

Cooley's Anemia Foundation	B00100	111971539
Covenant House International	B01711	132725416
Crista Ministries	B16623	916012289
Crohn's & Colitis Foundation	B00101	136193105
Cystic Fibrosis Foundation	B00102	131930701
Cystic Fibrosis Research, Inc.	B01847	510169988
Dementia Society of America	B18670	463401769
Depression and Bipolar Support Alliance	B00103	363379124
Doctors Without Borders/Médecins Sans Frontières USA	B11080	133433452
Endometriosis Association, Inc.	B00105	391414754
Engineering Ministries International	B16624	742213629
Epilepsy Foundation	B00106	520856660
Family Research Council	B16625	521792772
Fisher House Foundation	B02184	113158401
Five Talents USA	B16626	541940918
Focus on the Family	B02197	953188150
Food for The Hungry	B02206	952680390
Gateway for Cancer Research	B16655	731386920
Hagar USA Inc.	B16988	201507669
Hands at Work in Africa (USA)	B19374	261213083
Home School Legal Defense Association	B02474	521354365
Huntington's Disease Society of America	B00108	133349872
JAARS	B16628	560818833
JDRF International	B00109	231907729
Kay Yow Cancer Fund	B18596	261789695
Keep A Child Alive	B02804	731682844
Kids for the Kingdom	B02821	680421846
Kinship United	B16991	364395095
Leukemia & Lymphoma Society	B00110	135644916
Lupus Foundation of America	B00111	431131436
March of Dimes	B00112	131846366
MAZON: A Jewish Response to Hunger	B03242	222624532
Mental Health America (formerly National Mental Health Association)	B00113	131614906
Mercy Ships	B03286	262414132
Military Community Youth Ministries	B16630	742238462
Mission Aviation Fellowship	B08440	951920983
Muscular Dystrophy Association	B00114	131665552
Myasthenia Gravis Foundation of America	B00115	135672224
NAMI	B00116	431201653
National Foundation for Cancer Research	B11142	042531031
National Hemophilia Foundation	B00119	135641857
National Kidney Foundation	B00121	131673104
National Multiple Sclerosis Society	B00122	135661935
National Psoriasis Foundation	B00125	930571472
Nazarene Compassionate Ministries	B16632	431550318
Nomi Network	B18264	800290896
Officers' Christian Fellowship	B16638	381415401

Operation Restored Warrior Project (New Horizons Foundation)	B03893	841123082
Pancreatic Cancer Action Network	B00127	330841281
Parkinson's Foundation	B00128	131866796
Partnership to End Addiction	B16564	521736502
Pet Partners	B03979	911158281
Prison Fellowship Ministries	B04069	620988294
Public Radio International	B04095	411425271
Samaritan's Purse	B04242	581437002
SBP	B17259	262189665
Sickle Cell Disease Association of America	B00132	237175985
Smile Train	B00133	133661416
Society of Saint Andrew	B16639	541285793
Spina Bifida Association of America	B00135	581342181
St. Jude Children's Research Hospital	B00136	620646012
Susan G. Komen	B00137	751835298
The Michael J. Fox Foundation for Parkinson's Research	B07196	134141945
The Navigators	B16637	846007896
The V Foundation	B04807	133705951
Trans World Radio	B16640	221690564
Trinity HOPE	B18947	202216228
Unbound	B01584	431243999
United Breast Cancer Foundation	B16641	113571208
Voice of the Martyrs	B16642	731395057
Water Missions International	B05016	571116978
White Bison	B16643	841117880
ZERO - The End of Prostate Cancer	B00139	593400922

Main Phone	Website	County
602-326-5944	http://achildsfeedingfund.org	Maricopa County
419-726-5100	https://www.adoptamericanetwork.org	Lucas County
800-392-6327	https://www.amfar.org	New York County
800-835-5233	http://www.adflegal.org/	Maricopa County
203-358-5055	http://www.acgtfoundation.org	Fairfield County
202-407-8580	http://www.alsa.org	Arlington County
800-272-3900	http://www.alz.org	Cook County
202-832-5168	http://www.amenfoundation.org	District of Columbia
212-408-1200	https://www.americanbible.org	Philadelphia County
800-227-2345	www.cancer.org	Fulton County
612-332-3242	https://www.acb.org	Alexandria City
800-342-2383	http://www.diabetes.org	Arlington County
662-844-5036	http://www.afa.net	Lee County
212-363-3500	www.afsp.org	New York County
800-242-8721	http://www.heart.org	Dallas County
800-638-8299	http://www.kidneyfund.org	Montgomery County
646-737-9415	http://www.liverfoundation.org	New York County
212-315-8700	http://www.lung.org	Cook County
800-223-2732	http://www.apdaparkinson.org	Richmond County
888-448-7337	https://www.arborday.org	
800-283-7800	http://www.arthritis.org	Fulton County
888-777-6227	http://www.autismspeaks.org	New York County
703-790-8980	http://www.baptistworld.org	Falls Church City
763-406-8670	http://www.bethematch.org	Hennepin County
678-613-6729	http://www.bwhi.org	Fulton County
918-250-8101	https://www.blessing.org	Tulsa County
646-497-2600	https://www.bcrf.org	New York County
203-913-0073	https://www.bcyl.org	Fairfield County
970-231-0110	https://cadence.org	Arapahoe County
407-541-5102	http://www.crumilitary.org	Orange County
800-992-2623	http://www.cancerresearch.org	New York County
703-554-8734	https://www.care-net.org	Loudoun County
212-520-1686	https://www.yourcpf.org	New York County
800-654-0845	http://www.chcimpact.org	Alexandria City
360-647-2283	https://www.childcareworldwide.org	Whatcom County
314-241-1600	http://www.thenccs.org	Saint Louis City
909-593-7140	https://www.WER-US.org	Los Angeles County
847-634-6474	http://www.ChildrensHeartFoundation.org	Cook County
301-565-8500	https://childrensnational.org/	Montgomery County
212-344-6633	http://www.ctf.org	New York County
303-761-1959	http://www.cmfhq.org	Arapahoe County
800-858-4038	https://christianrelieffund.org	Randall County
303-723-0333	https://cwomissions.org/	Douglas County
719-266-8300	http://www.citygatenetwork.org	El Paso County
202-628-0123	http://www.ccalliance.org	District of Columbia
417-823-8998	http://www.convoyofhope.org	Greene County

212-279-8090	http://www.cooleysanemia.org	New York County
800-388-3888	http://www.covenanthouse.org	New York County
800-755-5022	https://worldconcern.org	King County
800-932-2423	http://www.crohnscolitisfoundation.org	New York County
800-344-4823	http://www.cff.org	Montgomery County
650-665-7586	https://www.cfri.org	Santa Clara County
800-336-3684	https://www.dementiasociety.org	Bucks County
312-642-0049	http://www.DBSAlliance.org	Cook County
888-392-0392	https://www.doctorswithoutborders.org	New York County
414-355-2200	https://EndometriosisAssn.org	Milwaukee County
719-633-2078	https://emiworld.org	El Paso County
800-332-1000	https://www.epilepsy.com	Prince George's County
800-225-4008	https://www.frc.org	District of Columbia
888-294-8560	https://www.fisherhouse.org	Montgomery County
800-670-6355	https://fivetalents.org	Fairfax County
719-531-3400	https://www.FocusOnTheFamily.com	El Paso County
480-998-3100	https://www.fh.org	Maricopa County
847-342-7450	https://www.gatewaycr.org	Cook County
704-880-0445	https://hagarusa.org/	Mecklenburg County
650-731-2626	https://www.handsatwork.org/	Contra Costa County
540-338-5600	www.hslda.org	Loudoun County
212-242-1968	http://www.hdsa.org	New York County
704-843-6168	https://www.jaars.org	Union County
800-533-2873	http://www.jdrf.org	New York County
919-659-3301	https://kayyow.com	Wake County
646-975-5559	http://keepachildalive.org	New York County
707-829-5504	https://www.kidsforthe kingdom.org	Sonoma County
877-577-1070	https://kinshipunited.org/	Cook County
914-949-5213	http://www.lls.org	Westchester County
202-349-1155	http://www.lupus.org	District of Columbia
888-663-4637	https://www.marchofdimes.org	Arlington County
310-442-0020	http://mazon.org	Los Angeles County
800-969-6642	https://mhanational.org	Alexandria City
903-939-7000	https://www.mercyships.org	Smith County
800-832-9098	http://www.mcym.org	El Paso County
208-498-0800	http://www.maf.org	Canyon County
800-572-1717	http://www.mda.org	Cook County
800-541-5454	https://myasthenia.org/	Worcester County
703-524-7600	http://www.nami.org	Arlington County
800-321-2873	https://www.nfcr.org/	Montgomery County
212-328-3700	http://www.hemophilia.org	New York County
212-889-2210	http://www.kidney.org	New York County
800-344-4867	http://www.nationalmssociety.org	New York County
800-723-9166	http://www.psoriasis.org	Washington County
913-768-4808	https://www.ncmi.org	Johnson County
646-867-0608	https://nominetwork.org	New York County
303-761-1984	http://www.ocfusa.org	Arapahoe County

719-260-1213	http://www.operationrestoredwarrior.org	El Paso County
310-725-0025	http://www.pancan.org	Los Angeles County
305-537-9906	https://www.parkinson.org	Miami Dade County
212-841-5200	https://www.drugfree.org	New York County
425-679-5503	http://www.petpartners.org	King County
800-206-9764	http://www.prisonfellowship.org	Loudoun County
612-338-5000	https://www.pri.org	Hennepin County
828-262-1980	http://www.samaritanspurse.org	Watauga County
504-277-6831	https://sbpusa.org/	Orleans Parish
410-528-1555	https://www.sicklecelldisease.org	Anne Arundel County
800-932-9541	https://www.smiletrain.org	New York County
434-299-5956	https://endhunger.org	Bedford County
202-944-3285	http://www.spinabifidaassociation.org	Arlington County
800-822-6344	http://www.stjude.org	Shelby County
877-465-6636	https://www.komen.org	Dallas County
800-708-7644	http://www.michaeljfox.org	New York County
719-598-1212	https://www.navigators.org/	El Paso County
919-380-9505	https://www.v.org	Wake County
919-460-3700	https://www.twr.org	Wake County
502-494-4580	http://trinityhope.org	Wilson County
913-384-6500	http://www.unbound.org	Wyandotte County
877-822-4287	http://www.ubcf.org	Suffolk County
877-337-0458	https://www.persecution.com	Washington County
843-769-7395	https://www.watermission.org	Charleston County
719-548-1000	http://www.whitebison.org	El Paso County
202-463-9455	http://www.zerocancer.org	Alexandria City