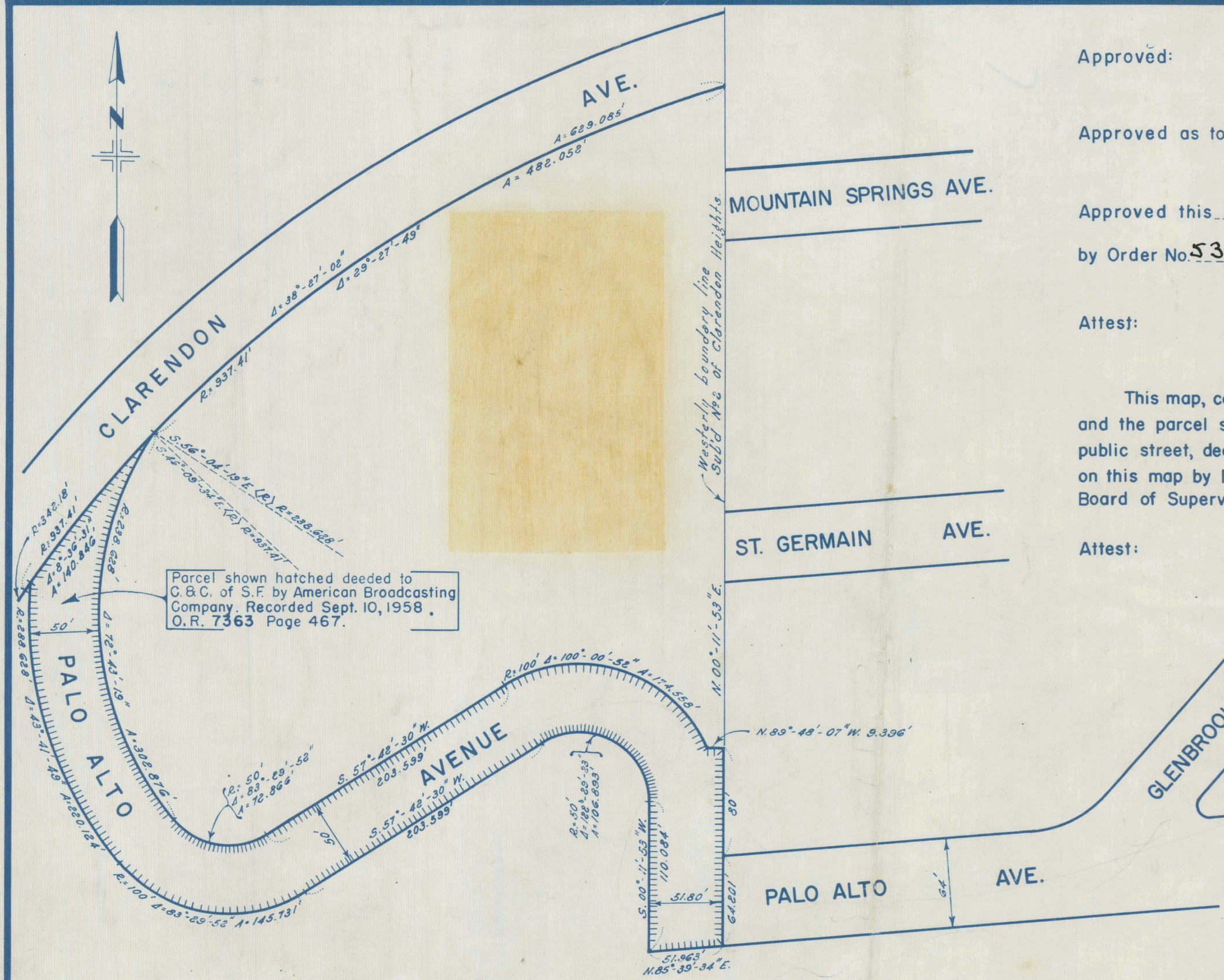


24



Parcel shown hatched decided to
C. & C. of S.F. by American Broadcasting
Company. Recorded Sept. 10, 1958,
O.R. 7363 Page 467.

BASIS OF BEARINGS
MIDTOWN TERRACE SUBDIVISION NO. 5
Recorded April 19, 1957 Map Book "R",
Page 92 to 94.

H42177
Book "S" of Maps - Pg 24.
(1 sheet.)
FILED
Not Returnable

RECORDED AT REQUEST OF
Board of Supervisors
At 5 Min Past 11 M
DEC 16 1958
City and County of San Francisco, Calif.
Sho A. Boney
RECORDER

Approved:

Reuben H. Owens
City Engineer

Approved as to form:

George S. Baglioni
City Attorney

Approved this 19th day of November 1958

by Order No. 53168

Shaman D. ...
Director of Public Works

Attest:

Sam G. Latta
Asst. Director of Public Works

This map, comprising one sheet, is approved and made official and the parcel shown hatched hereon is declared to be an open public street, dedicated to public use to be known by name as shown on this map by Resolution Number 1070-58 of the Board of Supervisors, adopted the 8TH day of December 1958

Attest:

Robert J. Dolan
Clerk of the Board of Supervisors

MAP
SHOWING THE EXTENSION
OF
PALO ALTO AVENUE
WESTERLY TO CLARENDON AVENUE

CITY AND COUNTY OF SAN FRANCISCO DEPARTMENT OF PUBLIC WORKS BUREAU OF ENGINEERING DIVISION OF SURVEYS AND MAPPING REUBEN H. OWENS, CITY ENGINEER		
SCALE: 1" = 80'	AUGUST	1958
Surveyed.....	Index No.....	Order No.....
Compiled.....	Computed R.D.....	Checked J.H.M.
Drawn L.E.G.	Traced L.E.G.	Checked G.G.W.
REFERENCES T-10-8; T-13-15; SUR. 57	SHEET 1 OF 1 SHEETS A-16-125	

OFFICIAL