



Looking northwest at City Cemetery from Geary Boulevard & 32nd Ave in 1900 (SFPL)

CITY CEMETERY

LANDMARK DESIGNATION RECOMMENDATION

SEPTEMBER 12, 2022
LAND USE AND TRANSPORTATION COMMITTEE OF THE BOARD OF SUPERVISORS

Kari Hervey-Lentz
Environmental Planner
Kari.Herveylentz@sfgov.org



San Francisco
Planning

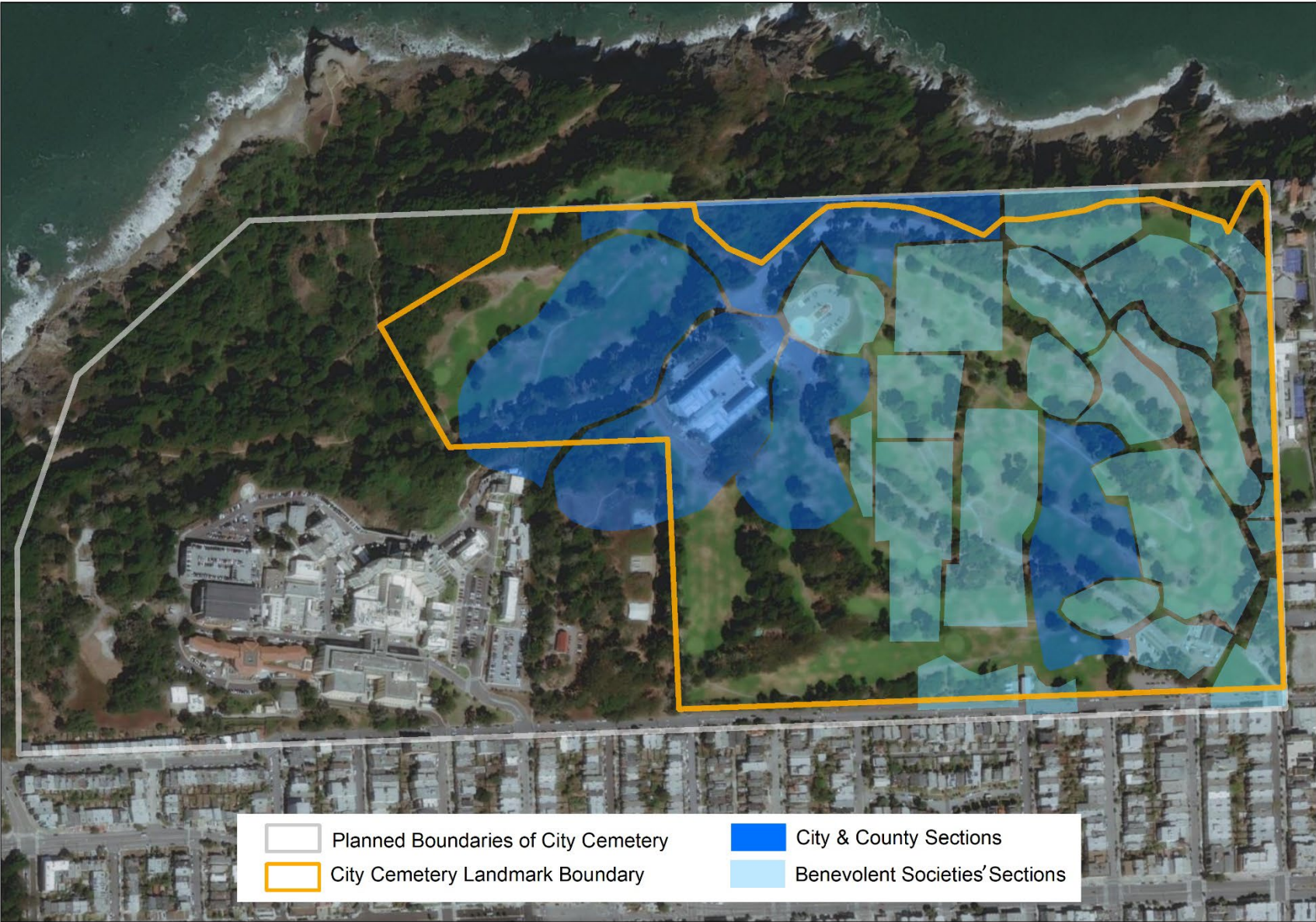
LOCATION MAP



0 140 280 560 Feet



HISTORICAL CONTEXT



0 120 240 480 Feet



SIGNIFICANCE OF CITY CEMETERY

Period of Significance:	1868 – 1909
Significance Criteria	Statement of Significance
Criteria 1: <i>Event</i>	Reflects how social organizations took responsibility for burial of their deceased members in the late 19 th century Shifting attitudes regarding cemeteries in urban spaces in the 19 th and early 20 th centuries
Criteria 3: <i>Design/ Construction</i>	Extant cemetery structures embody distinctive architectural characteristics of late 19 th century funerary design
Criteria 4: <i>Information Potential</i>	Buried remnants can yield important information about the city's history

CHARACTER DEFINING FEATURES

1. TOPOGRAPHY AND SETTING
2. TREES ASSOCIATED WITH CEMETERY SECTIONS
3. CEMETERY OPERATIONAL INFRASTRUCTURE
4. STANDING MORTUARY STRUCTURES
5. EXHUMATION PITS
6. HUMAN REMAINS
7. MORTUARY FURNITURE AND GRAVE GOODS

Topography and setting



View looking northwest at City Cemetery, c. 1898 (WNP71.1431)



View looking southwest at City Cemetery, c. 1890 (WNP26.511)

Trees associated with cemetery section boundaries



0 87.5 175 350 Feet



Cemetery operational infrastructure



- City Cemetery Landmark Boundary
- City & County Sections
- Benevolent Societies Sections
- Cemetery Operational Infrastructure

0 87.5 175 350 Feet

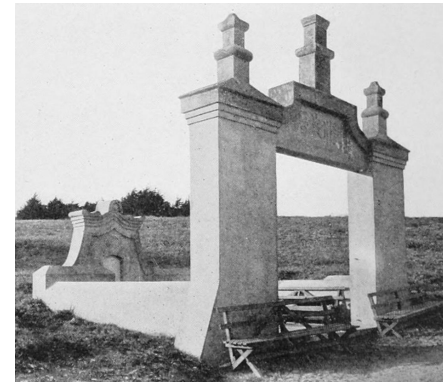


Standing structure: Kong Chow monument



廣州旅厝

Alex Ryder 2018



SF Chamber of Commerce 1914

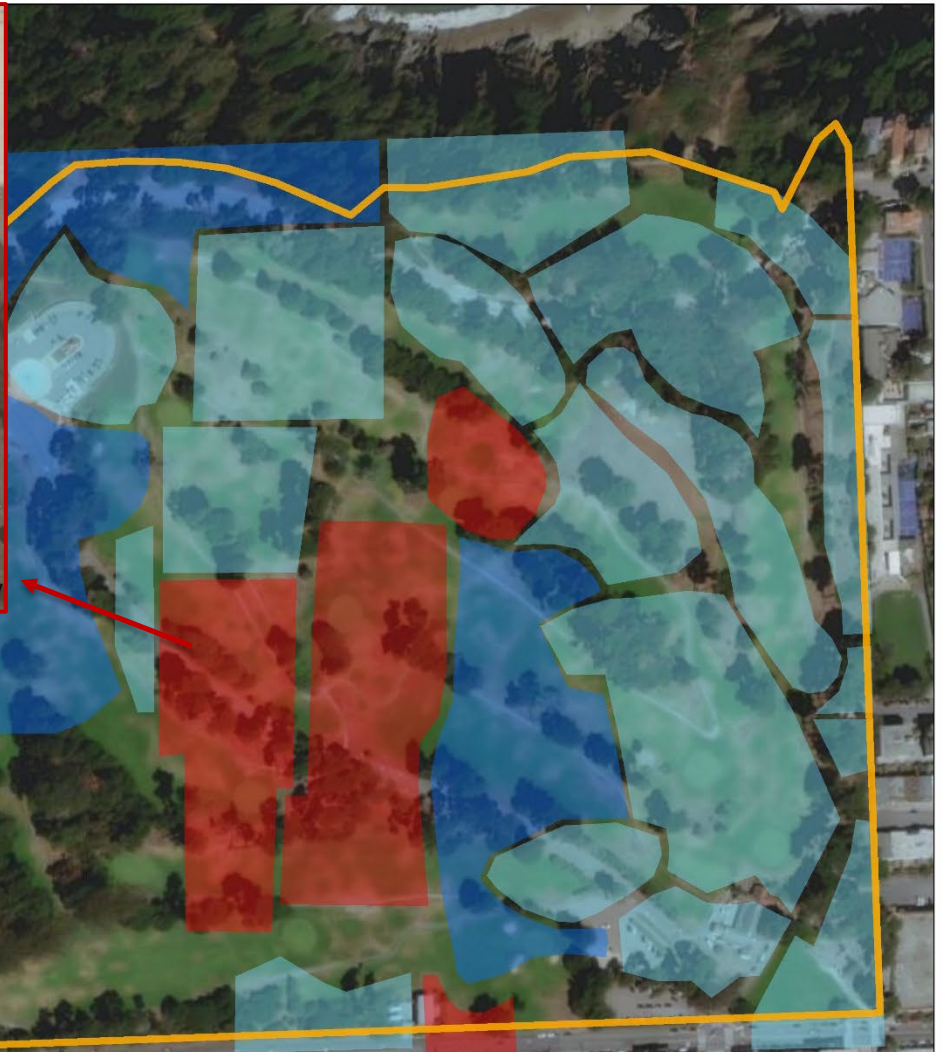
Standing structure: Seamen's obelisk



Alex Ryder 2018




Exhumation pits

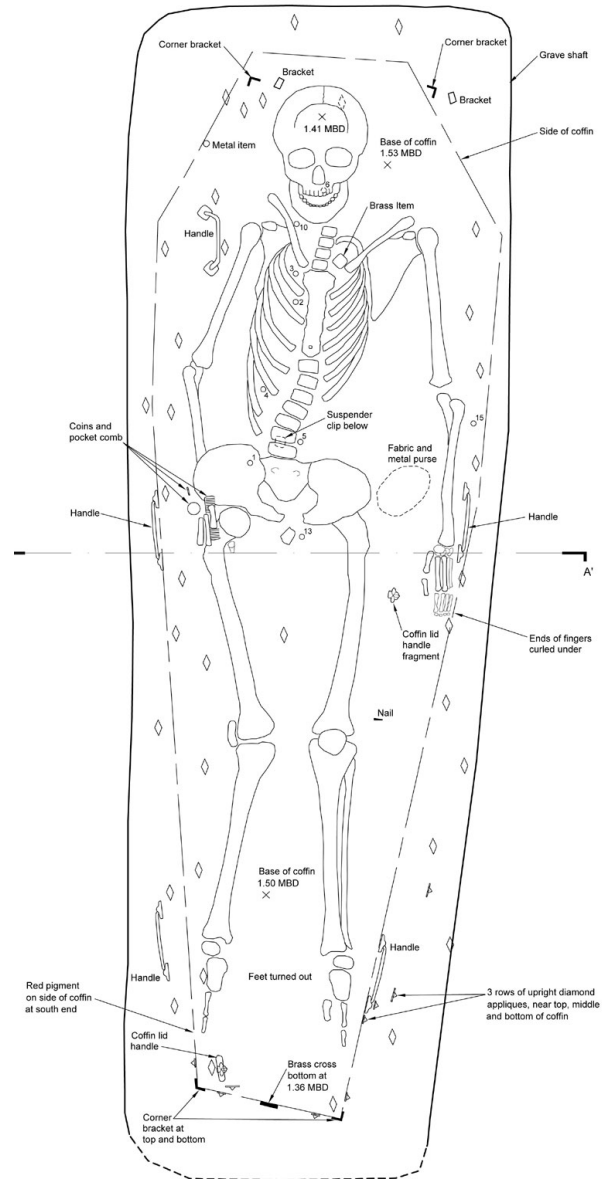


-  City Cemetery Landmark Boundary
-  City & County Sections
-  Benevolent Societies Sections
-  Various Chinese Associations

0 87.5 175 350 Feet



Human remains



Mortuary furniture and grave goods



Coffin



Curbing



Tombstone fragment



Shoe



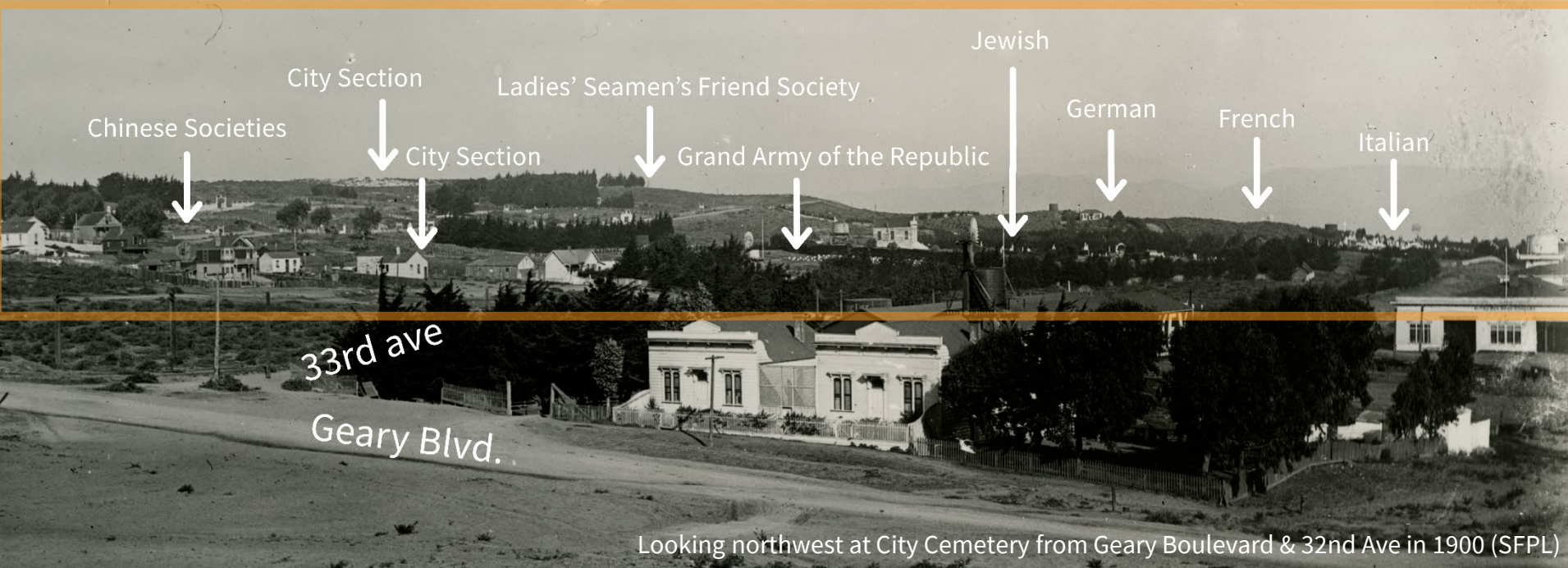
Chinese name brick



Coffin Hardware



Rosary



Looking northwest at City Cemetery from Geary Boulevard & 32nd Ave in 1900 (SFPL)

THANK YOU



**San Francisco
Planning**

Kari Hervey-Lentz
Environmental Planner
Kari.Herveylentz@sfgov.org

www.sfplanning.org