

4/27/2017
File # 170365
Received in Committee
4/27/17
for.



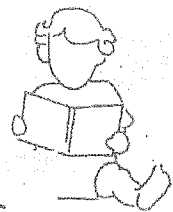
Children and Families Commission 2017-18 2-Year Department Budget

Key Investments



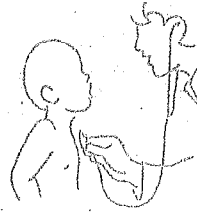
Key Impact:
FAMILY STRENGTHENING

12% of our City's children live below the poverty line



Key Impact:
QUALITY EARLY LEARNING

90% of brain development occurs in the first five years of a child's life.



Key Impact:
EARLY IDENTIFICATION AND INTERVENTION

1 in 4 children ages zero to five are at risk for developmental, behavioral or social delay.



2017-18 Proposed 2-Year Budget

	2016-17	2017-18	2018-19
First 5 California Prop 10 Allocation	6,114,773	5,088,722	5,901,670
First 5 California Prop 10 Grants	1,579,230	2,405,807	1,742,287
CDE Quality Rating & Improvement System	2,735,659	1,836,212	1,000,000
Use of Prop 10 Reserve Fund	968,129	2,155,265	1,257,368
Interest	197,864	220,365	209,922
Prop 10 Subtotal:	11,595,655	11,706,371	10,111,247
Dept. of Children, Youth & their Families	5,443,247	5,618,247	5,618,247
Dept. of Public Health	100,000	0	0
Human Services Agency	4,438,588	4,528,364	4,528,364
Mayor's Office of Early Care & Education	7,296,655	6,377,503	6,377,503
Interdepartmental Recovery Subtotal:	17,278,490	16,524,114	16,524,114
Total Revenues	28,874,145	28,230,485	26,635,361



First 5 Core Investments for 2017-18

Child Development	2016-17	2017-18
Early Education Quality Rating & Improvement System (local and regional)	\$3,216,473	\$4,242,019
Child Health		
Early Childhood Mental Health Consultation	\$850,000	\$325,000
Nurse Family Partnership Home Visiting	\$300,000	\$0
Inclusion of Children with Special Needs	\$250,000	\$250,259
Health Screenings (dental, vision, hearing & BMI)	\$100,500	\$104,820
Healthy Kids	\$100,000	\$0
Family Support		
Family Resource Centers	\$3,092,306	\$3,398,104
Family Support Capacity Building (training, facilities & technical assistance)	\$378,738	\$581,519



Core Partnerships

Office of Early Care and Education (OECE)

Quality Rating and Improvement System (QRIS), Inclusion of Children with Special Needs, Professional Development and Coaching Supports for Early Childhood Educators

Department of Children, Youth & their Families (DCYF)

Family Resource Centers, Parent Training Institute, Inclusion of Children with Special Needs

Human Services Agency (HSA)

Family Resource Centers, Parent Training Institute

Department of Public Health (DPH)

Child Health Screenings (vision, dental, hearing, BMI)

San Francisco Unified School District (SFUSD)

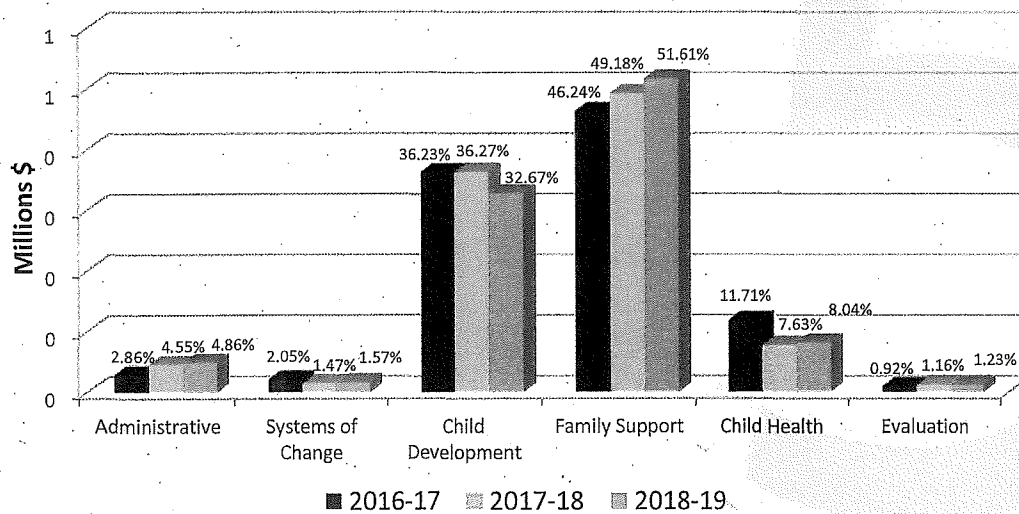
Early Education Quality Rating and Improvement System (QRIS)

Hope SF

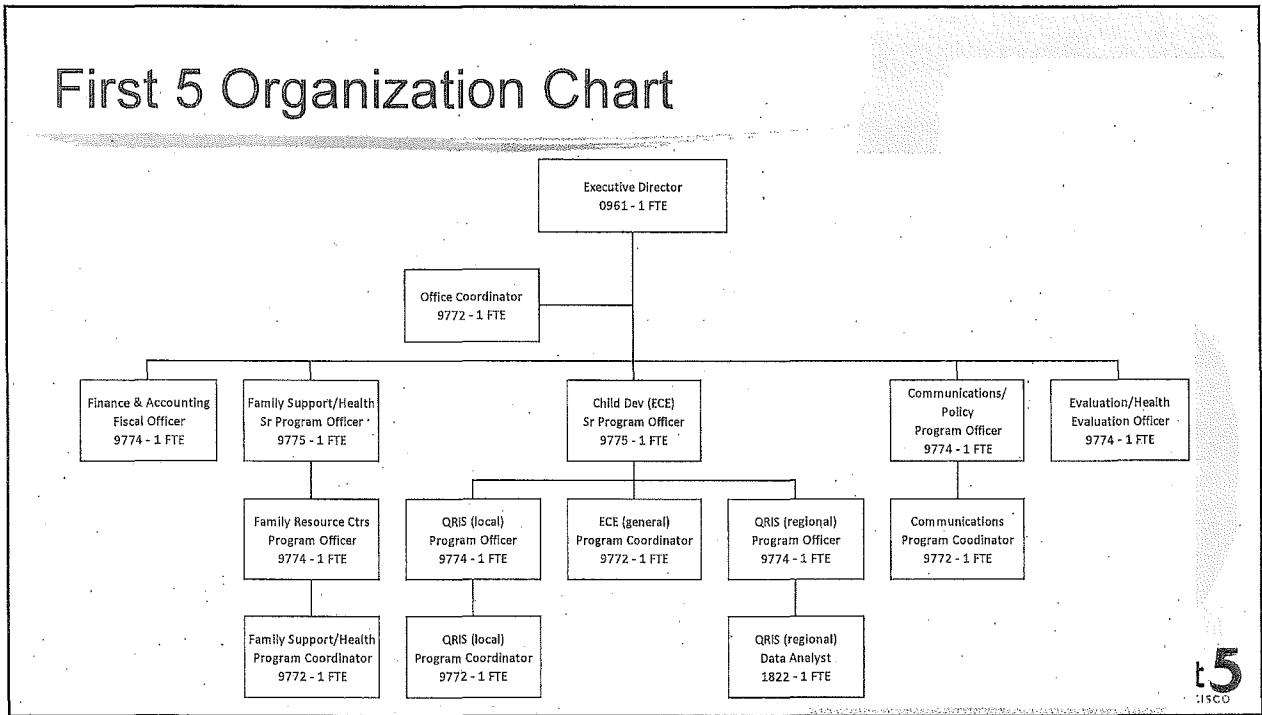
Family Resource Centers, Education Liaisons



Major Expenditures

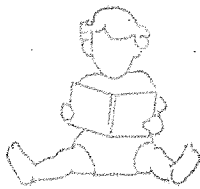


First 5 Organization Chart



Investments that make a difference

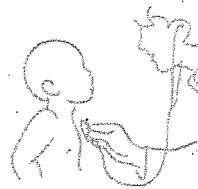
THE TIME TO INVEST IS NOW. BE A CHAMPION FOR...



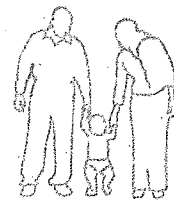
Kindergarten readiness and quality early learning



Developmental screening and early intervention



Preventative health services



Supporting resilient families and safe homes

