

OWNER'S STATEMENT

THE UNDERSIGNED OWNER IS THE ONLY PARTY HAVING RECORD TITLE INTEREST TO CONSENT TO THE PREPARATION AND FILING OF THIS MAP COMPRISING FOUR (4) SHEETS. BY OUR SIGNATURES HERETO WE HEREBY CONSENT TO THE PREPARATION AND RECORDATION OF SAID MAP AS SHOWN WITHIN THE DISTINCTIVE BORDER LINE.

OWNER: THE REGENTS OF THE UNIVERSITY OF CALIFORNIA, A CALIFORNIA PUBLIC CORPORATION

BY: *David Phillips*

NAME: DAVID PHILLIPS

TITLE: AVP-CAPITAL PROGRAMS

OWNER'S ACKNOWLEDGMENT

A NOTARY PUBLIC OR OTHER OFFICER COMPLETING THIS CERTIFICATE VERIFIES ONLY THE IDENTITY OF THE INDIVIDUAL WHO SIGNED THE DOCUMENT TO WHICH THIS CERTIFICATE IS ATTACHED AND NOT THE TRUTHFULNESS, ACCURACY, OR VALIDITY OF THAT DOCUMENT.

STATE OF CALIFORNIA)
COUNTY OF Yolo)

ON June 8 2022 BEFORE ME, Noelle S. Reis, NOTARY PUBLIC, PERSONALLY APPEARED David Phillips WHO PROVED TO ME ON THE BASIS OF SATISFACTORY EVIDENCE TO BE THE PERSON(S) WHOSE NAME(S) (S) ARE SUBSCRIBED TO THE WITHIN INSTRUMENT AND ACKNOWLEDGED TO ME THAT HE/SHE/THEY EXECUTED THE SAME IN HIS/HER/THEIR AUTHORIZED CAPACITY(IES), AND THAT BY HIS/HER/THEIR SIGNATURE(S) ON THE INSTRUMENT THE PERSON(S), OR THE ENTITY UPON BEHALF OF WHICH THE PERSON(S) ACTED, EXECUTED THE INSTRUMENT.

I CERTIFY UNDER PENALTY OF PERJURY UNDER THE LAWS OF THE STATE OF CALIFORNIA THAT THE FOREGOING PARAGRAPH IS TRUE AND CORRECT.

WITNESS MY HAND AND OFFICIAL SEAL.

SIGNATURE: *Noelle S. Reis*

NOTARY PUBLIC, STATE OF CA COMMISSION NO.: 2321716
MY COMMISSION EXPIRES: 2/16/2024
COUNTY OF PRINCIPAL PLACE OF BUSINESS: Yolo



ENGINEER'S STATEMENT

THIS MAP WAS PREPARED BY ME OR UNDER MY DIRECTION AND IS BASED UPON A FIELD SURVEY IN CONFORMANCE WITH THE REQUIREMENTS OF THE SUBDIVISION MAP ACT AND LOCAL ORDINANCE, AT THE REQUEST OF THE REGENTS OF THE UNIVERSITY OF CALIFORNIA, A PUBLIC CORPORATION, ON NOVEMBER 2020. I HEREBY STATE THAT ALL THE MONUMENTS ARE OF THE CHARACTER AND OCCUPY THE POSITIONS INDICATED OR THAT THEY WILL BE SET IN THOSE POSITIONS BEFORE NOVEMBER 2023, AND THAT THE MONUMENTS ARE, OR WILL BE, SUFFICIENT TO ENABLE THE SURVEY TO BE RETRACED, AND THAT THIS FINAL MAP SUBSTANTIALLY CONFORMS TO THE CONDITIONALLY APPROVED TENTATIVE MAP.

BY: *David C. Freyer*
DAVID C. FREYER
R.C.E. NO. C-030060

DATE: June 3, 2022



RECORDER'S STATEMENT

FILED THIS _____ DAY OF _____, 20____, AT _____ M. IN BOOK _____ OF _____, AT PAGE _____, AT THE REQUEST OF THE REGENTS OF THE UNIVERSITY OF CALIFORNIA, A CALIFORNIA PUBLIC CORPORATION.

SIGNED

COUNTY RECORDER

CITY AND COUNTY SURVEYOR'S STATEMENT

I HEREBY STATE THAT I HAVE EXAMINED THIS MAP; THAT THE SUBDIVISION AS SHOWN IS SUBSTANTIALLY THE SAME AS IT APPEARED ON THE TENTATIVE MAP, AND ANY APPROVED ALTERATIONS THEREOF; THAT ALL PROVISIONS OF THE CALIFORNIA SUBDIVISION MAP ACT AND ANY LOCAL ORDINANCES APPLICABLE AT THE TIME OF APPROVAL OF THE TENTATIVE MAP HAVE BEEN COMPLIED WITH; AND THAT I AM SATISFIED THIS MAP IS TECHNICALLY CORRECT.

WILLIAM E. BLACKWELL JR, ACTING CITY AND COUNTY SURVEYOR
CITY AND COUNTY OF SAN FRANCISCO

BY: *William E. Blackwell Jr.*
WILLIAM E. BLACKWELL JR, P.L.S. 8251

DATE: 6/14/2022



CLERK'S STATEMENT

I, ANGELA CALVILLO, CLERK OF THE BOARD OF SUPERVISORS OF THE CITY AND COUNTY OF SAN FRANCISCO, STATE OF CALIFORNIA, HEREBY STATE THAT SAID BOARD OF SUPERVISORS BY ITS MOTION NO. _____, ADOPTED _____, 20____, APPROVED THIS MAP ENTITLED "FINAL TRANSFER MAP NO. 11003"

IN TESTIMONY WHEREOF, I HAVE HEREUNTO SUBSCRIBED MY HAND AND CAUSED THE SEAL OF THE OFFICE TO BE AFFIXED.

BY: _____ DATE: _____
CLERK OF THE BOARD OF SUPERVISORS
CITY AND COUNTY OF SAN FRANCISCO
STATE OF CALIFORNIA

TAX STATEMENT

I, ANGELA CALVILLO, CLERK OF THE BOARD OF SUPERVISORS OF THE CITY AND COUNTY OF SAN FRANCISCO, STATE OF CALIFORNIA, DO HEREBY STATE THAT THE SUBDIVIDER HAS FILED A STATEMENT FROM THE TREASURER AND TAX COLLECTOR OF THE CITY AND COUNTY OF SAN FRANCISCO, SHOWING THAT ACCORDING TO THE RECORDS OF HIS OFFICE THERE ARE NO LIENS AGAINST THIS SUBDIVISION OR ANY PART THEREOF FOR UNPAID STATE, COUNTY, MUNICIPAL OR LOCAL TAXES, OR SPECIAL ASSESSMENTS COLLECTED AS TAXES.

DATED _____ DAY OF _____, 20____

CLERK OF THE BOARD OF SUPERVISORS
CITY AND COUNTY OF SAN FRANCISCO
STATE OF CALIFORNIA

BASIS OF BEARING:

THE BEARING NORTH 86°49'04" EAST BETWEEN THE FOUND MONUMENTS ON MISSION BAY BOULEVARD NORTH BETWEEN LONG BRIDGE STREET AND FOURTH STREET AS SHOWN IN THE CERTAIN MAP ENTITLED "FINAL MAP NO. 4343 RESIDENTIAL AND COMMERCIAL CONDOMINIUM PURPOSED MISSION BAY (11 AND 12)" FILED APRIL 8, 2011 IN BLOK DD OF SURVEY MAPS AT PAGES 116 THROUGH 121 WAS TAKEN AND USED AS THE BASIS OF BEARING FOR THIS MAP.

DISTANCES AND DIMENSIONS SHOWN ON THIS MAP ARE MEASURED IN FEET AND DECIMALS THEREOF.

ALL ANGLES ARE 90° UNLESS OTHERWISE SHOWN.

APPROVALS

THIS MAP IS APPROVED THIS _____ DAY OF _____, 20____ BY ORDER NO. _____

BY: _____ DATE: _____

Carla Short
CARLA SHORT
INTERIM DIRECTOR OF PUBLIC WORKS
CITY AND COUNTY OF SAN FRANCISCO
STATE OF CALIFORNIA

APPROVED AS TO FORM

DAVID CHIU, CITY ATTORNEY

BY: *David Chiu*
DEPUTY CITY ATTORNEY
CITY AND COUNTY OF SAN FRANCISCO

BOARD OF SUPERVISOR'S APPROVAL STATEMENT

ON _____, 20____, THE BOARD OF SUPERVISOR'S OF THE CITY AND COUNTY OF SAN FRANCISCO, STATE OF CALIFORNIA APPROVED AND PASSED MOTION NO. _____, A COPY OF WHICH IS ON FILE IN THE OFFICE OF THE BOARD OF SUPERVISOR'S IN FILE NO. _____

FIELD SURVEY COMPLETION

THE FIELD SURVEY FOR THIS MAP WAS COMPLETED ON SEPTEMBER 22, 2021.

ALL PHYSICAL DETAILS INCLUDING CITY AND PRIVATE MONUMENTATION SHOWN HEREON EXISTED AS OF THE FIELD SURVEY COMPLETION DATE, OR WILL BE SET BEFORE NOVEMBER 2023 AS NOTED IN THE ENGINEER'S STATEMENT.

**FINAL TRANSFER MAP
NO. 11003**

**FOR PUBLIC EDUCATIONAL PURPOSES
MISSION BAY (14 AND 14A)**

THE LANDS OF THE REGENTS OF THE UNIVERSITY OF CALIFORNIA BEING A SUBDIVISION OF PORTIONS OF ASSESSOR'S BLOCK 8709 LOT 11 AND BLOCK 8711 LOT 7, AS SAID LOTS BEING DESCRIBED AS UCSF PARCELS 1 AND 2 IN THAT GRANT DEED RECORDED ON JULY 19, 1999 AS DOCUMENT NO. 99-G622188 AND THAT QUITCLAIM DEED RECORDED JULY 19, 1999 AS DOCUMENT NO. 99-G622189, AND UCSF PARCELS 3 AND 4 IN THAT GRANT DEED RECORDED ON DECEMBER 17, 2004 AS DOCUMENT NO. 2004-H871364 AND THAT QUITCLAIM DEED RECORDED DECEMBER 17, 2004 AS DOCUMENT NO. 2004-H871365 IN THE OFFICE OF THE RECORDER OF THE CITY AND COUNTY OF SAN FRANCISCO

CITY AND COUNTY OF SAN FRANCISCO
SCALE AS NOTED

CALIFORNIA
JUNE, 2022



CIVIL ENGINEERS • SURVEYORS • CONSTRUCTION MANAGERS
150 Executive Park Blvd, Suite 4200 • San Francisco, CA 94134
(415)534-7070 • www.freyerlaureta.com

EXISTING EASEMENTS

SEE SHEET 3 FOR PLOTTED EASEMENTS, NOTED AS **E3** AND SO FORTH.

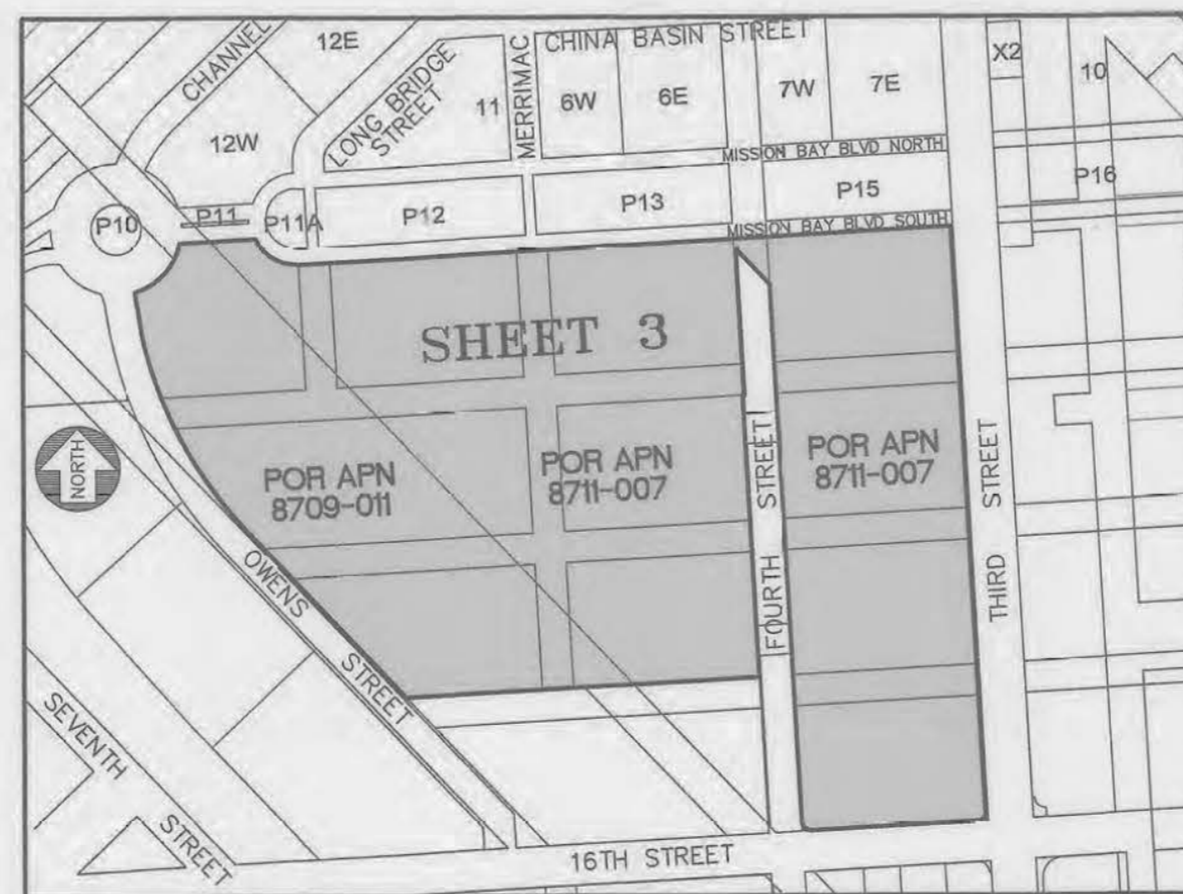
- CITY WATER LINE AND SEWER EASEMENTS RECORDED NOVEMBER 26, 1963 IN REEL A681 IMAGE 574, DOCUMENT NO. 47267, OFFICIAL RECORDS, VACATION AND QUITCLAIM, FILE NO. 061517, ORDINANCE NO. 39-07 RECORDED MARCH 21, 2007 IN REEL J352 IMAGE 820, DOCUMENT NO. 2007-1356510, OFFICIAL RECORDS, QUITCLAIM DEED RECORDED FEBRUARY 14, 2008 IN REEL J578 IMAGE 628, DOCUMENT NO. 2008-1536181, OFFICIAL RECORDS, (APPROXIMATE SOUTHEASTERLY 20' OF NORTHWESTERLY 45' OF FORMER HUBBELL STREET, NOT PLOTTED)
- CITY SEWER EASEMENT RECORDED DECEMBER 18, 1967 IN REEL B202 IMAGE 101, DOCUMENT NO. 033887, OFFICIAL RECORDS, PARTIAL REVOCATION OF PUBLIC WORKS ORDER NO. 77534 RECORDED OCTOBER 6, 2005 IN REEL I990 IMAGE 547, DOCUMENT NO. 2005-1048419, OFFICIAL RECORDS (UNDISCLOSED LOCATION, NOT PLOTTED)
- CALTRANS ACCESS PERMIT RECORDED JULY 19, 1999 IN REEL H429 OR 548, DOCUMENT NO. 99-G622196, OFFICIAL RECORDS AND TEMPORARY AND INTERIM ACCESS EASEMENT RECORDED MAY 23, 2002 IN REEL I144 IMAGE 355, DOCUMENT NO. 2002-H171679, OFFICIAL RECORDS (PORTIONS OF UCSF PARCEL 3 WITHIN FORMER SIXTH STREET AND A 40' WIDE STRIP, PLOTTED)
- CITY ACCESS EASEMENT - TEMPORARY CONNECTOR ROAD RECORDED MAY 23, 2002 IN REEL I144 IMAGE 353, DOCUMENT NO. 2002-H171677, OFFICIAL RECORDS (A 40' STRIP IN UCSF PARCEL 3, PLOTTED)
- OFFER OF DEDICATION FOR STREET PURPOSES RECORDED FEBRUARY 17, 2004 IN REEL I575 IMAGE 166, DOCUMENT NO. 2004-H658613, OFFICIAL RECORDS (A PORTION OF UCSF PARCEL 4, 5' SETBACK ALONG THIRD STREET, PLOTTED)
- CITY EASEMENT FOR PUBLIC UTILITY PURPOSES, RECORDED FEBRUARY 17, 2004 IN REEL I575 IMAGE 168, DOCUMENT NO. 2004-H658615, OFFICIAL RECORDS (A PORTION OF UCSF PARCEL 4, 5' SETBACK ALONG THIRD STREET, PLOTTED)
- PACIFIC BELL AND PG&E EASEMENTS RECORDED JULY 19, 1999 IN REEL H429 IMAGE 505, DOCUMENT NO. 99-G622153, OFFICIAL RECORDS (FORMER SIXTH STREET IN UCSF PARCEL 3, SV-36 AND SV-43, PLOTTED)
- CLDC ACCESS/UTILITIES EASEMENT - TEMPORARY CONNECTOR ROAD RECORDED DECEMBER 17, 2004 IN REEL I786 IMAGE 216, DOCUMENT NO. 2004-H871368, OFFICIAL RECORDS AND REEL J403 IMAGE 329, DOCUMENT NO. 2007-1397005, OFFICIAL RECORDS (A 40' WIDE STRIP IN UCSF PARCEL 3, PLOTTED)
- CDC EASEMENT FOR PEDESTRIAN AND VEHICULAR ACCESS, INGRESS AND EGRESS PURPOSES RECORDED ON JULY 19, 1999 IN REEL H429 IMAGE 550, DOCUMENT NO. 99-G622198, OFFICIAL RECORDS AND RECORDED ON DECEMBER 17, 2004 IN REEL I786 IMAGE 217, DOCUMENT NO. 2004-H871369, OFFICIAL RECORDS (APN 8716-001, 8717-001 AND 8718-001 IN FOURTH STREET, PLOTTED)
- CDC EASEMENT FOR PEDESTRIAN AND VEHICULAR ACCESS, INGRESS AND EGRESS PURPOSES RECORDED JULY 19, 1999 IN REEL H429 IMAGE 551, DOCUMENT NO. 99-G622199, OFFICIAL RECORDS AND DECEMBER 17, 2004 IN REEL I786 IMAGE 218, DOCUMENT NO. 2004-H871370, OFFICIAL RECORDS (PORTIONS OF APN 8711-007, 5' SETBACK ALONG THIRD STREET, PLOTTED)
- CDC EASEMENT FOR PEDESTRIAN AND VEHICULAR ACCESS, INGRESS AND EGRESS PURPOSES RECORDED JULY 19, 1999 IN REEL H429 IMAGE 552, DOCUMENT NO. 99-G622200, OFFICIAL RECORDS AND RECORDED DECEMBER 17, 2004 IN REEL I786 IMAGE 219, DOCUMENT NO. 2004-H871371, OFFICIAL RECORDS (APN 8709-004, PORTION OF OWENS STREET, PLOTTED)
- CLDC CAMPUS SITE VARA BLOCK EASEMENT) RECORDED JULY 19, 1999 IN REEL H429 IMAGE 553, DOCUMENT NO. 99-G622201 AND DECEMBER 17, 2004 IN REEL I786 IMAGE 220, DOCUMENT NO. 2004-H871372, OFFICIAL RECORDS (PORTION OF UCSF PARCEL 3, PLOTTED)
- CITY ACCESS AND UTILITIES EASEMENTS RECORDED DECEMBER 17, 2004 IN REEL I786 IMAGE 221, DOCUMENT NO. 2004-H871373, OFFICIAL RECORDS (PORTION OF UCSF PARCEL 3 IN FORMER SIXTH STREET, PLOTTED)
- CITY EASEMENTS FOR FIRE WATER METERS PURPOSES RECORDED APRIL 15, 2011 IN REEL K375 IMAGE 231, DOCUMENT NO. 2011-J163142, OFFICIAL RECORDS (AT NELSON RISING LANE AND FOURTH STREET, PLOTTED)
- OFFER OF DEDICATION RECORDED JUNE 19, 2012 IN REEL K671 IMAGE 312, DOCUMENT NO. 2012-J432077, OFFICIAL RECORDS (PORTION OF APN 8709-011, IN OWENS STREET AT MISSION BAY DRIVE AND CIRCLE, PLOTTED)
- OFFER OF DEDICATION RECORDED FEBRUARY 25, 2013 IN REEL K840 IMAGE 540, DOCUMENT NO. 2013-J607097 OFFICIAL RECORDS (PORTION OF APN 8711-007 AT THIRD STREET AND SIXTEENTH STREET TURNING RADIUS, PLOTTED)
- CITY EASEMENT FOR UNDERGROUND UTILITIES PURPOSES RECORDED FEBRUARY 25, 2013 IN REEL K840 IMAGE 544, DOCUMENT NO. 2013-J607101, OFFICIAL RECORDS (IN FOURTH STREET BETWEEN 16TH STREET AND MISSION BAY BOULEVARD SOUTH, PLOTTED)
- PG&E EASEMENT FOR UNDERGROUND FACILITIES AND EQUIPMENT PURPOSES RECORDED MAY 23, 2016 AS DOCUMENT NO. 2016-K248989, OFFICIAL RECORDS (PORTION OF APN 8711-007 IN CAMPUS LANE BETWEEN FOURTH AND THIRD STREETS, PLOTTED)
- CITY ADA COMPLIANT CURB RAMPS EASEMENT RECORDED FEBRUARY 25, 2013 IN REEL K840 IMAGE 548, DOCUMENT NO. 2013-J607105, OFFICIAL RECORDS (PORTION OF APN 8711-007 IN NELSON RISING LANE AT FOURTH STREET, PLOTTED)

THIS MAP IS SUBJECT TO THE TERMS AND CONDITIONS OF THE FOLLOWING

- REDEVELOPMENT PLAN FOR MISSION BAY SOUTH REDEVELOPMENT PROJECT RECORDED NOVEMBER 18, 1998 IN REEL H264 IMAGE 420, DOCUMENT NO. 98-G470337, OFFICIAL RECORDS, DECEMBER 3, 1998 IN REEL H273 IMAGE 267, DOCUMENT NO. 98-G477250, RECORDED SEPTEMBER 1, 2004 IN REEL I714 IMAGE 536, DOCUMENT NO. 2004-H802112, OFFICIAL RECORDS, MARCH 1, 2005 IN REEL I836 IMAGE 494, DOCUMENT NO. 2005-H911979, OFFICIAL RECORDS AND DECEMBER 31, 2007 IN REEL J547 IMAGE 277, DOCUMENT NO. 2007-1512983, OFFICIAL RECORDS
- AMENDED AND RESTATED AGREEMENT CONCERNING THE PUBLIC TRUST RECORDED JULY 19, 1999 IN REEL H429 IMAGE 503, DOCUMENT NO. 99-G622151, OFFICIAL RECORDS
- AGREEMENT FOR CONTRIBUTION OF REAL PROPERTY RECORDED DECEMBER 17, 2004 IN REEL I786 IMAGE 209, DOCUMENT NO. 2004-H871361, OFFICIAL RECORDS AND DECEMBER 31, 2003 IN REEL I544 IMAGE 370, DOCUMENT NO. 2003-H628288, OFFICIAL RECORDS
- COVENANTS, CONDITIONS AND RESTRICTIONS IN QUITCLAIM DEED RECORDED JULY 19, 1999 IN REEL H429 IMAGE 512, DOCUMENT NO. 99-G622160, OFFICIAL RECORDS
- COVENANTS AND ENVIRONMENTAL RESTRICTION RECORDED MARCH 21, 2000 IN REEL H598 IMAGE 171, DOCUMENT NO. 2000-G748551, OFFICIAL RECORDS
- COVENANTS AND ENVIRONMENTAL RESTRICTION RECORDED MARCH 21, 2000 IN REEL H598 IMAGE 172, DOCUMENT NO. 2000-G748552, OFFICIAL RECORDS
- GRANT DEED RECORDED DECEMBER 31, 2003 IN REEL I544 IMAGE 366, DOCUMENT NO. 2003-H628284, OFFICIAL RECORDS AND DECEMBER 17, 2004 IN REEL I786 IMAGE 212, DOCUMENT NO. 2004-H871364, OFFICIAL RECORDS
- AMENDED AND RESTATED DECLARATION AND AGREEMENT OF COVENANTS, CONDITIONS AND RESTRICTIONS FOR THE UCSF MISSION BAY CAMPUS RECORDED JULY 19, 1999 IN REEL H429 IMAGE 545, DOCUMENT NO. 99-G622193, OFFICIAL RECORDS AND RECORDED DECEMBER 17, 2004 IN REEL I786 IMAGE 214, DOCUMENT NO. 2004-H871366, OFFICIAL RECORDS
- DECLARATION OF COVENANTS RECORDED OCTOBER 29, 2004 IN I754 IMAGE 064, DOCUMENT NO. 2004-H841651, OFFICIAL RECORDS
- QUITCLAIM DEED FROM CITY TO THE REGENTS RECORDED DECEMBER 17, 2004 IN REEL I786 IMAGE 213, DOCUMENT NO. 2004-H871365, OFFICIAL RECORDS
- MINOR SIDEWALK ENCROACHMENT PERMIT NO. 13MSE-0055 RECORDED FEBRUARY 19, 2013 IN REEL K836 IMAGE 317, DOCUMENT NO. 2013-J604157, OFFICIAL RECORDS
- BOARD OF SUPERVISORS ORDINANCE NO. 159-12 (AGREEMENTS, PERMITS, AND LEASE-IMPROVEMENTS ON PORTIONS OF THIRD, FOURTH, OWENS, AND 16TH STREETS - UCSF MISSION BAY) RECORDED FEBRUARY 25, 2013 IN REEL K840 IMAGE 536, DOCUMENT NO. 2013-J607093, OFFICIAL RECORDS

GENERAL NOTES

- THIS MAP IS FOR FINANCING AND CONVEYANCING (INCLUDING LEASING) PURPOSES ONLY. THIS MAP DOES NOT AUTHORIZE DEVELOPMENT OF OR CONSTRUCTION ON ANY LOT/PARCEL.
- DEVELOPMENT OF OR CONSTRUCTION ON EACH PARCEL THAT IS IDENTIFIED AS "NOT FOR DEVELOPMENT PURPOSES - SUBJECT TO SUBSEQUENT DISCRETIONARY APPROVALS" IS CONDITIONED UPON COMPLIANCE WITH ANY AND ALL APPLICABLE PROVISIONS OF THE MISSION BAY NORTH AND MISSION BAY SOUTH REDEVELOPMENT PLANS, AND THE PLAN DOCUMENTS (AS DEFINED IN THE REDEVELOPMENT PLANS) THEN IN EFFECT, THE APPLICABLE CITY REGULATIONS (AS DEFINED IN THE REDEVELOPMENT PLANS, WHICH DEFINITION INCLUDES WITHOUT LIMITATION THE PLANNING CODE AND THE SUBDIVISION CODE), AND THE MISSION BAY FINAL SUBSEQUENT ENVIRONMENTAL IMPACT REPORT AND MITIGATION MONITORING AND REPORTING PROGRAM (COLLECTIVELY REFERRED TO AS THE "APPLICABLE LAWS") PRIOR TO ISSUANCE OF ANY SUBSEQUENT DISCRETIONARY APPROVALS, INCLUDING, WITHOUT LIMITATION, ANY PERMITS NECESSARY FOR INTERIM OR TEMPORARY USES, DEMOLITION PERMITS, SUBDIVISION MAP APPROVALS, AND MAJOR PHASE AND PROJECT APPROVALS (COLLECTIVELY REFERRED TO AS "SUBSEQUENT DISCRETIONARY APPROVALS"). THE SCOPE OF "APPLICABLE LAWS" MAY VARY AND INCREASE DEPENDING ON THE OWNERSHIP AND USE OF THE LOTS/PARCELS; BY WAY OF EXAMPLE, THE UNIVERSITY OF CALIFORNIA AND THE SAN FRANCISCO UNIFIED SCHOOL DISTRICT FOR PURPOSES RELATED TO THEIR STATE-AUTHORIZED EDUCATIONAL MISSION MAY BE EXEMPT FROM CERTAIN CITY REGULATIONS THAT CONSTITUTE APPLICABLE LAWS FOR A DIFFERENT AND/OR SUBSEQUENT PROPERTY OWNER AND/OR SUBDIVIDER. BASED ON THE FOREGOING, A SUBSEQUENT PROPERTY OWNER AND/OR SUBDIVIDER MAY NEED TO PROVIDE ADDITIONAL INFORMATION AND/OR COMPLY WITH ADDITIONAL REQUIREMENTS DEPENDING ON THE SCOPE OF THE APPLICABLE LAWS.
- NO PUBLIC IMPROVEMENTS, INCLUDING OPEN SPACE, ARE PROPOSED AS PART OF THIS MAP; HOWEVER, SUBSEQUENT DISCRETIONARY APPROVALS MAY BE SUBJECT TO PUBLIC IMPROVEMENT PLANS AND PUBLIC IMPROVEMENT AGREEMENTS CONSISTENT WITH THE PLAN DOCUMENTS. SUCH IMPROVEMENT PLANS AND AGREEMENTS MAY INCLUDE OFF-SITE IMPROVEMENTS, PROVISION OF PUBLIC FACILITIES, INFRASTRUCTURE, AND BEAUTIFICATION CONSISTENT WITH APPLICABLE LAWS. IN CONNECTION WITH SUCH IMPROVEMENT PLANS AND AGREEMENTS, THE DESIGN OF STRUCTURES ON CITY PROPERTY, INCLUDING PUBLIC STREETS AND PUBLIC OPEN SPACE, SHALL BE REFERRED TO THE ARTS COMMISSION IN ACCORDANCE WITH THE MISSION BAY NORTH AND MISSION BAY SOUTH MEMORANDUM OF UNDERSTANDING (ARTS COMMISSION), THEN IN EFFECT.
- NO CHANGES OR OTHER IMPROVEMENTS TO CURRENTLY EXISTING PUBLIC OR PRIVATE UTILITIES OR RELATED FACILITIES SERVING STRUCTURES EXISTING AS OF THE DATE OF THIS MAP OR, WITH RESPECT TO SUCH STRUCTURES, TO CURRENTLY EXISTING RIGHTS FOR VEHICULAR OR PEDESTRIAN INGRESS OR EGRESS, OR TO CURRENTLY EXISTING RIGHTS FOR USE, ACCESS, OR MAINTENANCE OF ANY OF THE FOREGOING (COLLECTIVELY "UTILITY AND ACCESS RIGHTS") ARE INCLUDED AS PART OF THIS MAP; HOWEVER, ANY SUBSEQUENT SUBDIVISION APPLICATION SHALL, IN ACCORDANCE WITH APPLICABLE LAWS, DELINEATE ANY SUCH UTILITY AND ACCESS RIGHTS OR PLANNED UTILITY AND ACCESS RIGHTS THAT MAY BE AFFECTED ON THE PARCEL TO BE SUBDIVIDED, ANY ADJOINING PARCEL, AND ANY ADJOINING PUBLIC PROPERTY. (B) IF THE CITY OR THE REDEVELOPMENT AGENCY OF THE CITY AND COUNTY OF SAN FRANCISCO (SFRA) DETERMINES THAT ISSUANCE OF ANY SUBSEQUENT DISCRETIONARY APPROVAL MAY AFFECT ANY UTILITY AND ACCESS RIGHTS ON ANY PROPERTY SUBJECT TO THIS MAP, THE CITY OR SFRA MAY CONDITION SUCH SUBSEQUENT DISCRETIONARY APPROVAL ON THE PROVISION OF ALTERNATE MEANS OF PROVIDING SUCH UTILITY AND ACCESS RIGHTS, CONSISTENT WITH APPLICABLE LAWS, INCLUDING, WITHOUT LIMITATION, PROVISION OR SUBSTANTIALLY EQUIVALENT UTILITY AND ACCESS RIGHTS TO THE EXTENT, IF ANY, THAT THE PUBLIC AT LARGE HAS ACQUIRED RECORD EASEMENTS FOR ACCESS THROUGH OR FOR USE OF THE PROPERTY.



VICINITY MAP NOT TO SCALE

**FINAL TRANSFER MAP
NO. 11003**

**FOR PUBLIC EDUCATIONAL PURPOSES
MISSION BAY (14 AND 14A)**

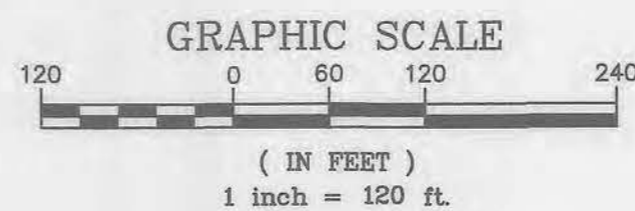
THE LANDS OF THE REGENTS OF THE UNIVERSITY OF CALIFORNIA BEING A SUBDIVISION OF PORTIONS OF ASSESSOR'S BLOCK 8709 LOT 11 AND BLOCK 8711 LOT 7, AS SAID LOTS BEING DESCRIBED AS UCSF PARCELS 1 AND 2 IN THAT GRANT DEED RECORDED ON JULY 19, 1999 AS DOCUMENT NO. 99-G622188 AND THAT QUITCLAIM DEED RECORDED JULY 19, 1999 AS DOCUMENT NO. 99-G622189, AND UCSF PARCELS 3 AND 4 IN THAT GRANT DEED RECORDED ON DECEMBER 17, 2004 AS DOCUMENT NO. 2004-H871364 AND THAT QUITCLAIM DEED RECORDED DECEMBER 17, 2004 AS DOCUMENT NO. 2004-H871365 IN THE OFFICE OF THE RECORDER OF THE CITY AND COUNTY OF SAN FRANCISCO

CITY AND COUNTY OF SAN FRANCISCO
SCALE AS NOTED

CALIFORNIA
JUNE, 2022



CIVIL ENGINEERS • SURVEYORS • CONSTRUCTION MANAGERS
150 Executive Park Blvd, Suite 4200 • San Francisco, CA 94134
(415)534-7070 • www.freyerlaureta.com



- LEGEND:**
- DISTINCTIVE BORDER LINE
 - PROPERTY LINE
 - - - EASEMENT LINE
 - - - MONUMENT LINE
 - - - MISSION BAY PLANNING LINE
- FOUND CONCRETE MONUMENT IN MONUMENT WELL WITH 2.5" BRASS DISC STAMPED RCE 30060 PER R3 OR AS NOTED
 - FOUND 2.5" BRASS DISC PER R3 OR AS NOTED
 - 2.5" BRASS DISC, EPOXIED TO BE SET BEFORE NOVEMBER, 2023 - R.C.E. NO. C-030060, IF MONUMENTATION DIFFERS, A CORNER RECORD, CERTIFICATE OF CORRECTION OR RECORD OF SURVEY, AS APPROPRIATE, WILL BE FILED INDICATING LOCATION AND CHARACTER
 - E3 EXISTING EASEMENT, SEE SHEET 2 FOR REFERENCE

- APN ASSESSOR'S PARCEL NUMBER (BLOCK-LOT NUMBER)
 CCSF CITY AND COUNTY OF SAN FRANCISCO
 CDC CATELLUS DEVELOPMENT CORPORATION
 CLDC CATELLUS LAND AND DEVELOPMENT CORPORATION
 D DELTA FD FOUND
 L LENGTH (M) MEASURED
 M-M MONUMENT TO MONUMENT MID MON ID PER CCSF DATA BASE
 MON MONUMENT OR OFFICIAL RECORDS
 PCL PARCEL PARK P10 MISSION BAY PARK BLOCK
 POB POINT OF BEGINNING POC POINT OF COMMENCEMENT
 POR PORTION (R) RADIAL
 SV STREET VACATION (T) TOTAL
 TPOB TRUE POINT OF BEGINNING
- R1 "MAP OF MISSION BAY" FILED JULY 19, 1999 IN BOOK Z OF MAPS AT PAGES 97 TO 119
 R2 QUITCLAIM DEED, RECORDED ON JUNE 18, 2012 AS DOC. NO. 2012J431602
 R3 "FINAL MAP NO. 4343 RESIDENTIAL AND COMMERCIAL CONDOMINIUM PURPOSES MISSION BAY (11 AND 12)" FILED APRIL 8, 2011 IN BLOCK DD OF SURVEY MAPS AT PAGES 116 TO 121
 R4 RECORD OF SURVEY #6251 FILED SEPTEMBER 16, 2011 IN BOOK DD OF SURVEY MAPS AT PAGES 156-157
 R5 "FINAL MAP TRACT NO. 3936 FOR RESIDENTIAL AND COMMERCIAL CONDOMINIUM PURPOSES MISSION BAY (2-7 AND 13)" FILED FEBRUARY 22, 2011 IN BLOCK BB OF MAPS AT PAGES 54 TO 58

- NOTE:**
- FORMER STREETS SHOWN ARE PER "RECORD OF SURVEY MAP OF MISSION BAY" FILED JULY 28TH, 1992 IN BOOK Y OF MAPS AT PAGES 62-82.
 - ALL DISTANCES AND DIMENSIONS ARE MEASURED IN FEET AND DECIMALS THEREOF.
 - MONUMENT LINES ARE ON CENTERLINE OF STREET UNLESS OTHERWISE NOTED.
 - MISSION BAY PARK BLOCKS ARE PER REDEVELOPMENT PLAN FOR MISSION BAY SOUTH REDEVELOPMENT PROJECT RECORDED NOVEMBER 18, 1998, IN REEL H264, IMAGE 420, DOCUMENT NO. 98-G470337.
 - THE PROPOSED ASSESSOR'S PARCEL NUMBERS SHOWN HEREON ARE FOR INFORMATIONAL USE ONLY AND SHOULD NOT BE RELIED UPON FOR ANY OTHER PURPOSE.

**FINAL TRANSFER MAP
NO. 11003**

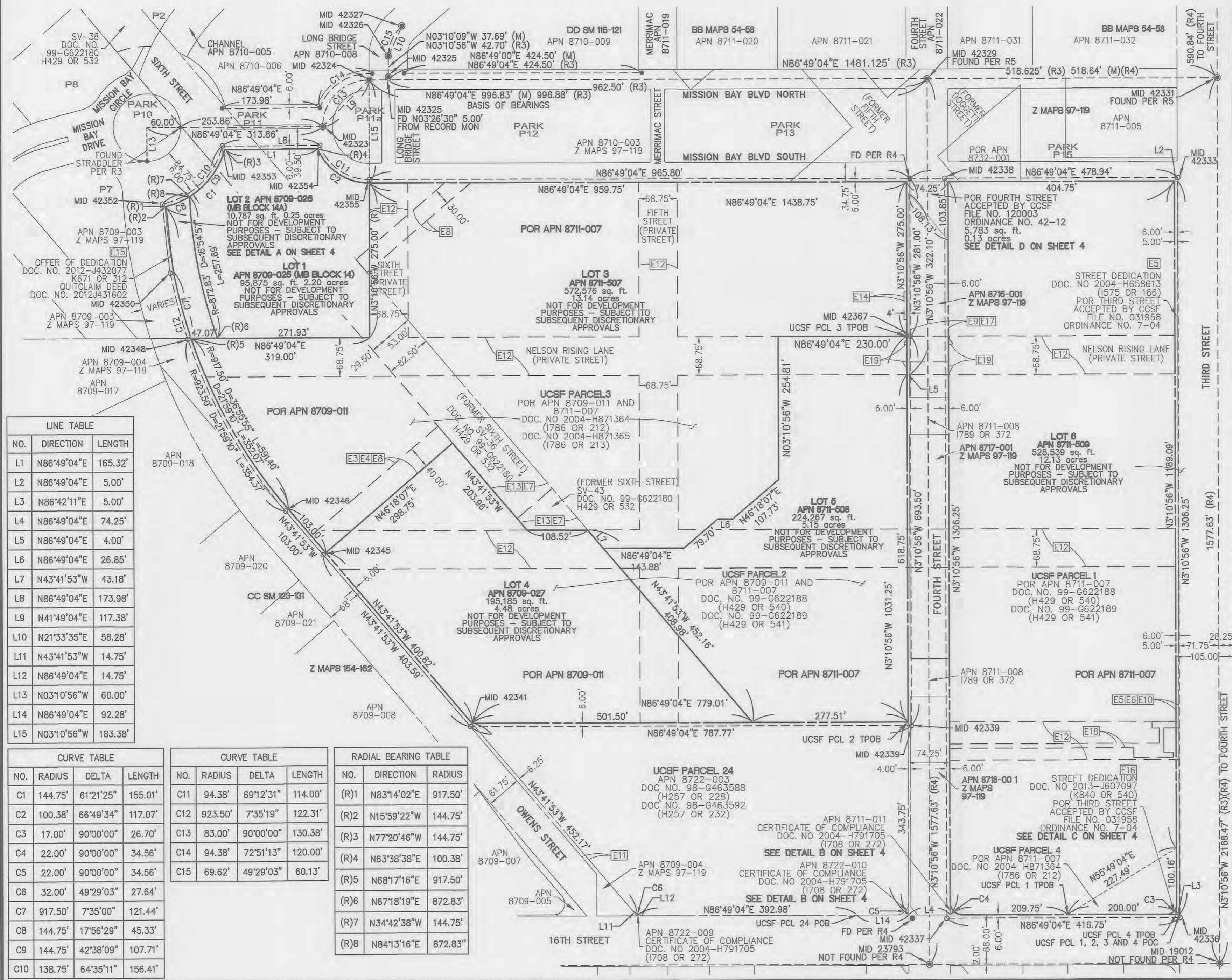
FOR PUBLIC EDUCATIONAL PURPOSES
MISSION BAY (14 AND 14A)

THE LANDS OF THE REGENTS OF THE UNIVERSITY OF CALIFORNIA BEING A SUBDIVISION OF PORTIONS OF ASSESSOR'S BLOCK 8709 LOT 11 AND BLOCK 8711 LOT 7, AS SAID LOTS BEING DESCRIBED AS UCSF PARCELS 1 AND 2 IN THAT GRANT DEED RECORDED ON JULY 19, 1999 AS DOCUMENT NO. 99-G622188 AND THAT QUITCLAIM DEED RECORDED JULY 19, 1999 AS DOCUMENT NO. 99-G622189, AND UCSF PARCELS 3 AND 4 IN THAT GRANT DEED RECORDED ON DECEMBER 17, 2004 AS DOCUMENT NO. 2004-H871364 AND THAT QUITCLAIM DEED RECORDED DECEMBER 17, 2004 AS DOCUMENT NO. 2004-H871365 IN THE OFFICE OF THE RECORDER OF THE CITY AND COUNTY OF SAN FRANCISCO

CITY AND COUNTY OF SAN FRANCISCO CALIFORNIA
SCALE AS NOTED JUNE, 2022



CIVIL ENGINEERS • SURVEYORS • CONSTRUCTION MANAGERS
150 Executive Park Blvd. Suite 4200 • San Francisco, CA 94134
(415)534-7070 • www.freyerlaureta.com



LINE TABLE

NO.	DIRECTION	LENGTH
L1	N86°49'04"E	165.32'
L2	N86°49'04"E	5.00'
L3	N86°42'11"E	5.00'
L4	N86°49'04"E	74.25'
L5	N86°49'04"E	4.00'
L6	N86°49'04"E	26.85'
L7	N43°41'53"W	43.18'
L8	N86°49'04"E	173.98'
L9	N41°49'04"E	117.38'
L10	N21°33'35"E	58.28'
L11	N43°41'53"W	14.75'
L12	N86°49'04"E	14.75'
L13	N03°10'56"W	60.00'
L14	N86°49'04"E	92.28'
L15	N03°10'56"W	183.38'

CURVE TABLE

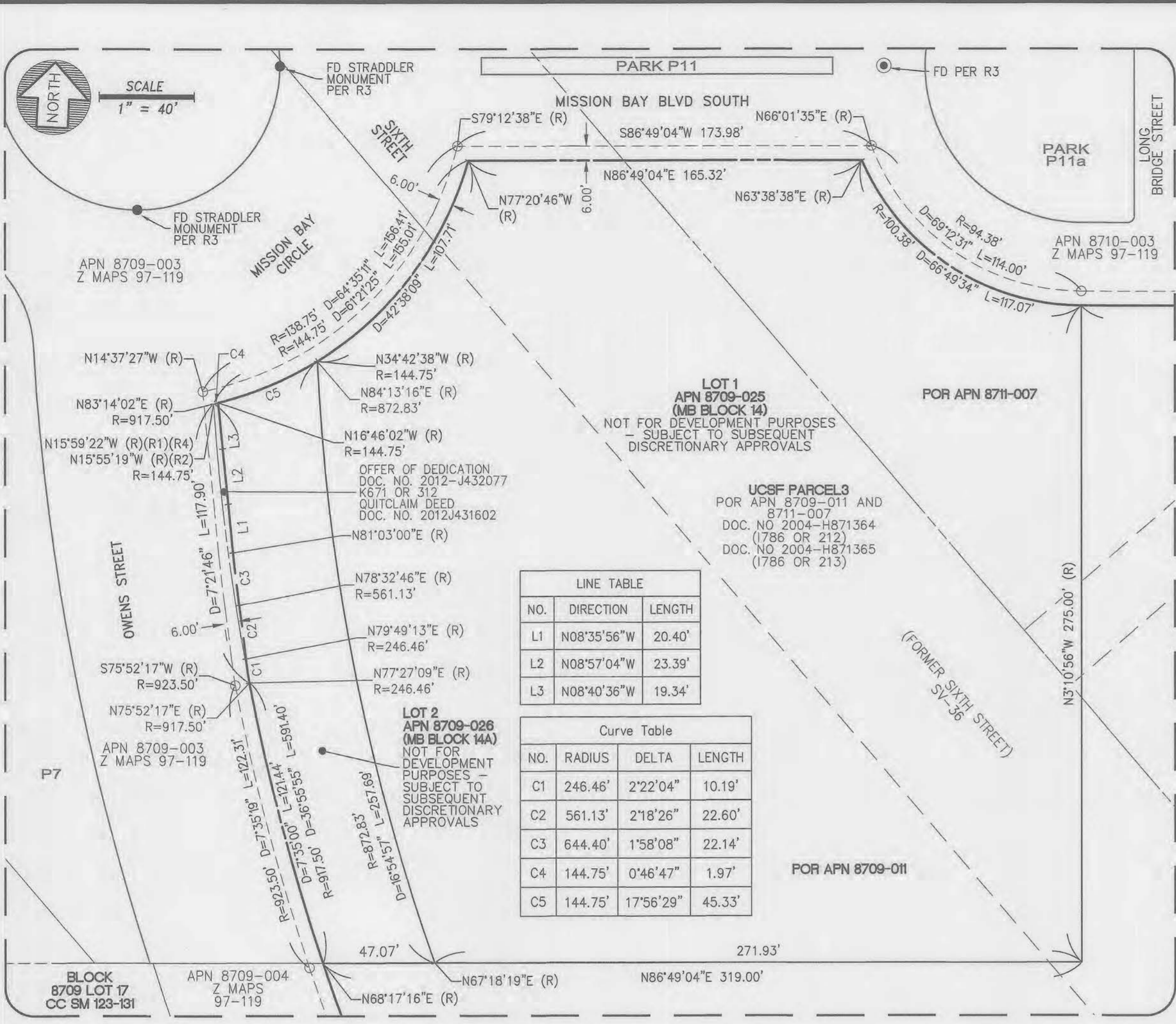
NO.	RADIUS	DELTA	LENGTH
C1	144.75'	61°21'25"	155.01'
C2	100.38'	66°49'34"	117.07'
C3	17.00'	90°00'00"	26.70'
C4	22.00'	90°00'00"	34.56'
C5	22.00'	90°00'00"	34.56'
C6	32.00'	49°29'03"	27.64'
C7	917.50'	7°35'00"	121.44'
C8	144.75'	17°56'29"	45.33'
C9	144.75'	42°38'09"	107.71'
C10	138.75'	64°35'11"	156.41'

CURVE TABLE

NO.	RADIUS	DELTA	LENGTH
C11	94.38'	69°12'31"	114.00'
C12	923.50'	7°35'19"	122.31'
C13	83.00'	90°00'00"	130.38'
C14	94.38'	72°51'13"	120.00'
C15	69.62'	49°29'03"	60.13'

RADIAL BEARING TABLE

NO.	DIRECTION	RADIUS
(R)1	N83°14'02"E	917.50'
(R)2	N15°59'22"W	144.75'
(R)3	N77°20'46"W	144.75'
(R)4	N63°38'38"E	100.38'
(R)5	N68°17'16"E	917.50'
(R)6	N67°18'19"E	872.83'
(R)7	N34°42'38"W	144.75'
(R)8	N84°13'16"E	872.83'



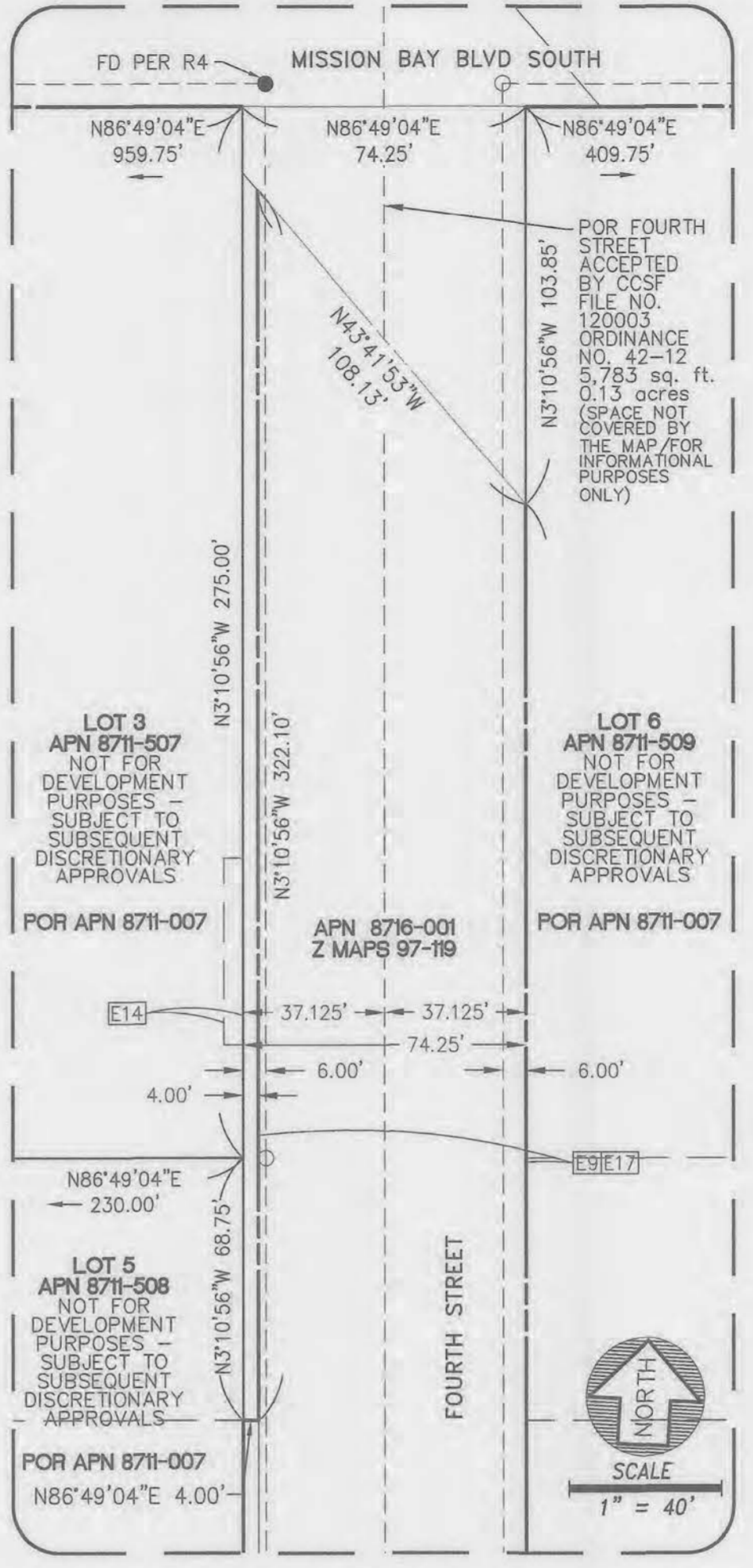
LINE TABLE

NO.	DIRECTION	LENGTH
L1	N08°35'56"W	20.40'
L2	N08°57'04"W	23.39'
L3	N08°40'36"W	19.34'

Curve Table

NO.	RADIUS	DELTA	LENGTH
C1	246.46'	2°22'04"	10.19'
C2	561.13'	2°18'26"	22.60'
C3	644.40'	1°58'08"	22.14'
C4	144.75'	0°46'47"	1.97'
C5	144.75'	17°56'29"	45.33'

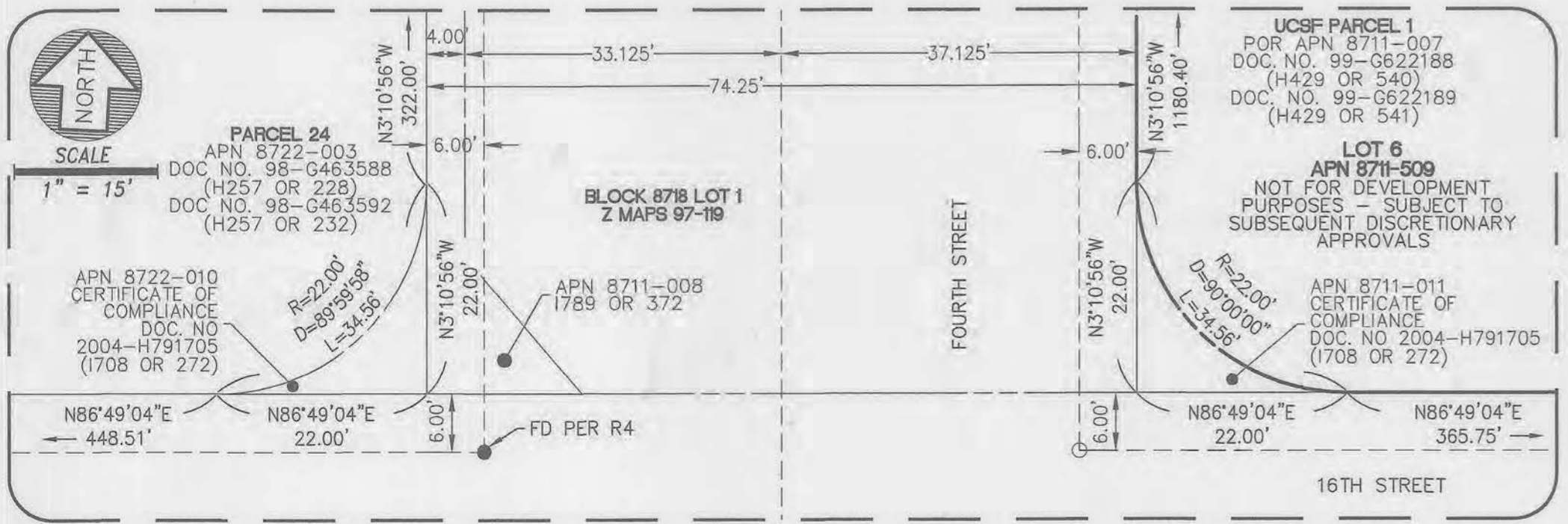
DETAIL A



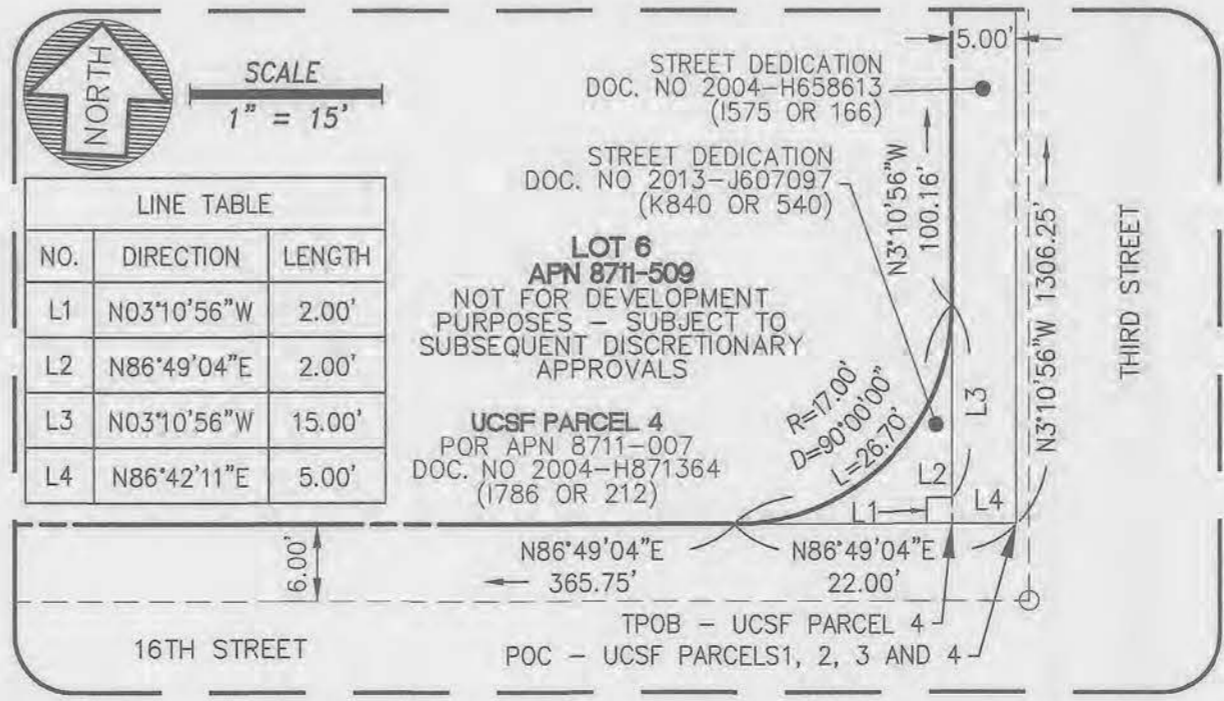
LINE TABLE

NO.	DIRECTION	LENGTH
L1	N03°10'56"W	2.00'
L2	N86°49'04"E	2.00'
L3	N03°10'56"W	15.00'
L4	N86°42'11"E	5.00'

DETAIL C



DETAIL B



DETAIL D

- LEGEND:**
- DISTINCTIVE BORDER LINE
 - PROPERTY LINE
 - EASEMENT LINE
 - MONUMENT LINE
 - MISSION BAY PLANNING LINE
 - FOUND CONCRETE MONUMENT IN MONUMENT WELL WITH 2.5" BRASS DISC STAMPED RCE 30060 PER R3 OR AS NOTED
 - FOUND 2.5" BRASS DISC PER R3 OR AS NOTED
 - 2.5" BRASS DISC, EPOXIED TO BE SET BEFORE NOVEMBER, 2023 - R.C.E. NO. C-030060, IF MONUMENTATION DIFFERS, A CORNER RECORD, CERTIFICATE OF CORRECTION OR RECORD OF SURVEY, AS APPROPRIATE, WILL BE FILED INDICATING LOCATION AND CHARACTER
 - E3 EXISTING EASEMENT, SEE SHEET 2

- APN ASSESSOR'S PARCEL NUMBER (BLOCK-LOT NUMBER)
- CCSF CITY AND COUNTY OF SAN FRANCISCO
- CDC CATELLUS DEVELOPMENT CORPORATION
- CLDC CATELLUS LAND AND DEVELOPMENT CORPORATION
- D DELTA
- FD FOUND
- L LENGTH (M) MEASURED
- M-M MONUMENT TO MONUMENT
- MON MON ID PER CCF DATA BASE
- MON MONUMENT OR OFFICIAL RECORDS
- PCL PARCEL
- POB POINT OF BEGINNING
- POR PORTION (R) RADIAL
- SV STREET VACATION (T) TOTAL
- TPOB TRUE POINT OF BEGINNING
- R1 "MAP OF MISSION BAY" FILED JULY 19, 1999 IN BOOK Z OF MAPS AT PAGES 97 TO 119
- R2 QUITCLAIM DEED, RECORDED ON JUNE 18, 2012 AS DOC. NO. 2012J431602
- R3 "FINAL MAP NO. 4343 RESIDENTIAL AND COMMERCIAL CONDOMINIUM PURPOSES MISSION BAY (11 AND 12)" FILED APRIL 8, 2011 IN BLOCK DD OF SURVEY MAPS AT PAGES 116 TO 121
- R4 RECORD OF SURVEY #6251 FILED SEPTEMBER 16, 2011 IN BOOK DD OF SURVEY MAPS AT PAGES 156-157
- R5 "FINAL MAP TRACT NO. 3936 FOR RESIDENTIAL AND COMMERCIAL CONDOMINIUM PURPOSES MISSION BAY (2-7 AND 13)" FILED FEBRUARY 22, 2011 IN BLOCK BB OF MAPS AT PAGES 54 TO 58

- NOTE:**
1. FORMER STREETS SHOWN ARE PER "RECORD OF SURVEY MAP OF MISSION BAY" FILED JULY 28TH, 1992 IN BOOK Y OF MAPS AT PAGES 62-82.
 2. ALL DISTANCES AND DIMENSIONS ARE MEASURED IN FEET AND DECIMALS THEREOF.
 3. MONUMENT LINES ARE ON CENTERLINE OF STREET UNLESS OTHERWISE NOTED.
 4. MISSION BAY PARK BLOCKS ARE PER REDEVELOPMENT PLAN FOR MISSION BAY SOUTH REDEVELOPMENT PROJECT RECORDED NOVEMBER 18, 1998, IN REEL H264, IMAGE 420, DOCUMENT NO. 98-6470337.
 5. THE PROPOSED ASSESSOR'S PARCEL NUMBERS SHOWN HEREON ARE FOR INFORMATIONAL USE ONLY AND SHOULD NOT BE RELIED UPON FOR ANY OTHER PURPOSE.

FINAL TRANSFER MAP NO. 11003

FOR PUBLIC EDUCATIONAL PURPOSES MISSION BAY (14 AND 14A)

THE LANDS OF THE REGENTS OF THE UNIVERSITY OF CALIFORNIA BEING A SUBDIVISION OF PORTIONS OF ASSESSOR'S BLOCK 8709 LOT 11 AND BLOCK 8711 LOT 7, AS SAID LOTS BEING DESCRIBED AS UCSF PARCELS 1 AND 2 IN THAT GRANT DEED RECORDED ON JULY 19, 1999 AS DOCUMENT NO. 99-6622188 AND THAT QUITCLAIM DEED RECORDED JULY 19, 1999 AS DOCUMENT NO. 99-6622189, AND UCSF PARCELS 3 AND 4 IN THAT GRANT DEED RECORDED ON DECEMBER 17, 2004 AS DOCUMENT NO. 2004-H871364 AND THAT QUITCLAIM DEED RECORDED DECEMBER 17, 2004 AS DOCUMENT NO. 2004-H871365 IN THE OFFICE OF THE RECORDER OF THE CITY AND COUNTY OF SAN FRANCISCO

CITY AND COUNTY OF SAN FRANCISCO CALIFORNIA
SCALE AS NOTED JUNE, 2022



CIVIL ENGINEERS • SURVEYORS • CONSTRUCTION MANAGERS
150 Executive Park Blvd, Suite 4200 • San Francisco, CA 94134
(415)534-7070 • www.freyerlaureta.com