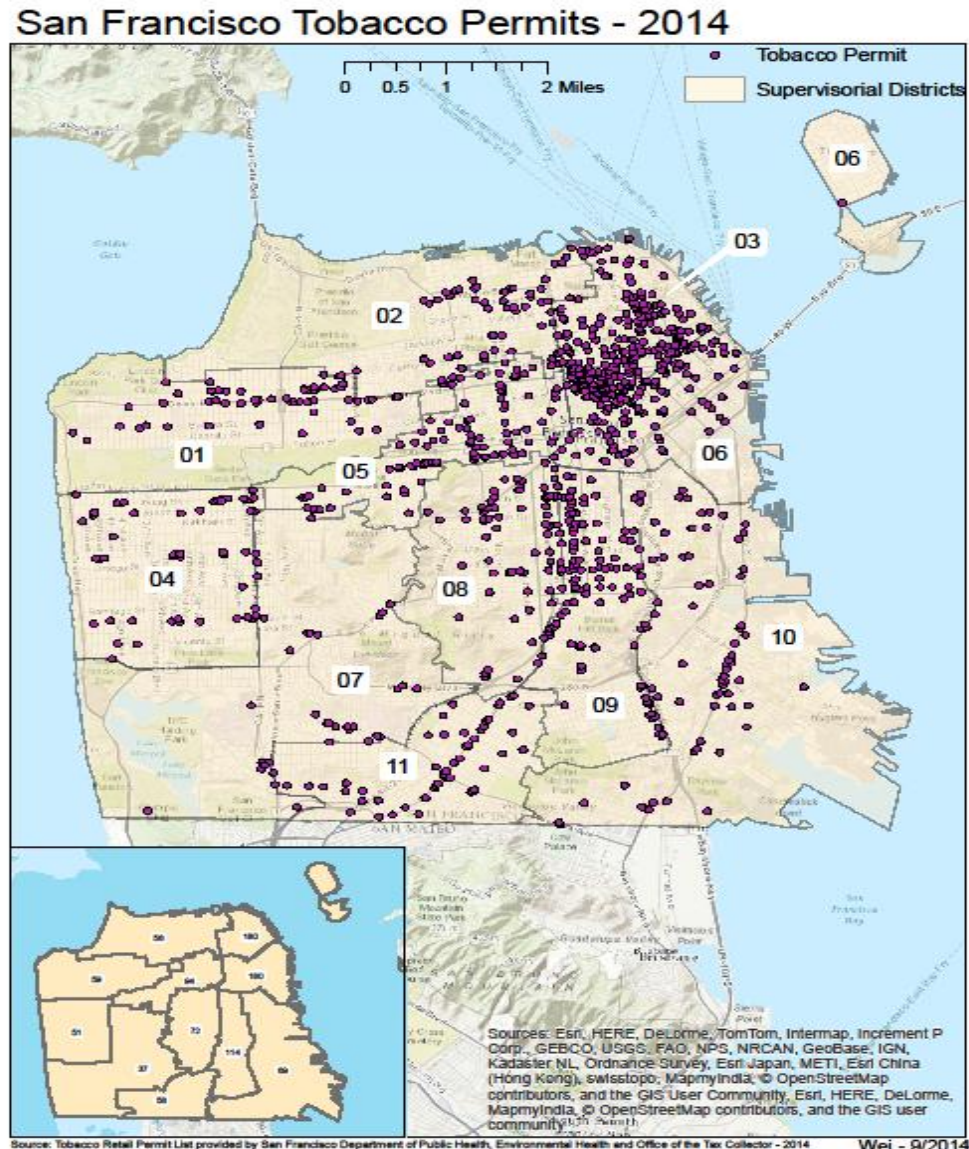
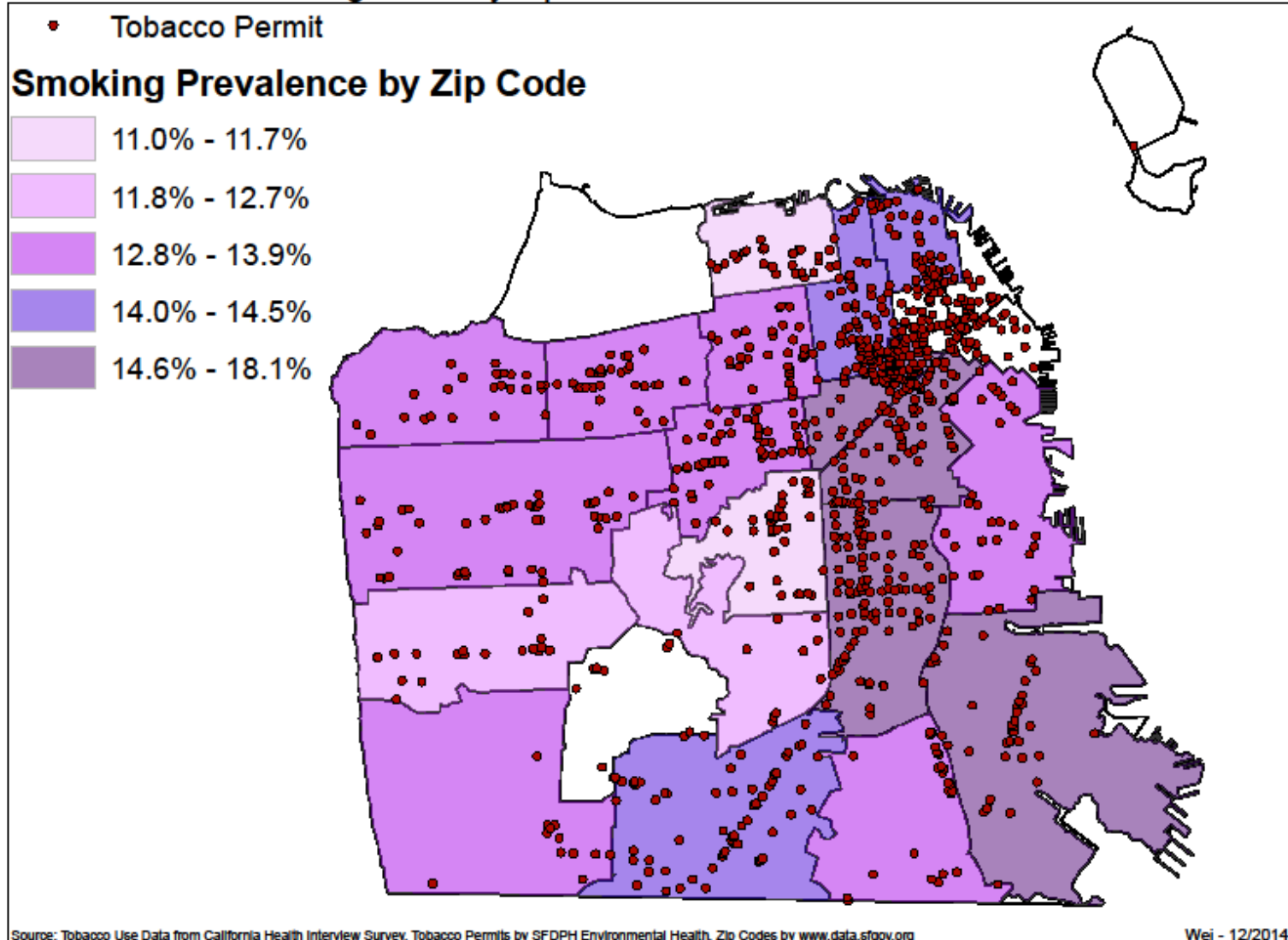


Distribution of Tobacco Permits in San Francisco



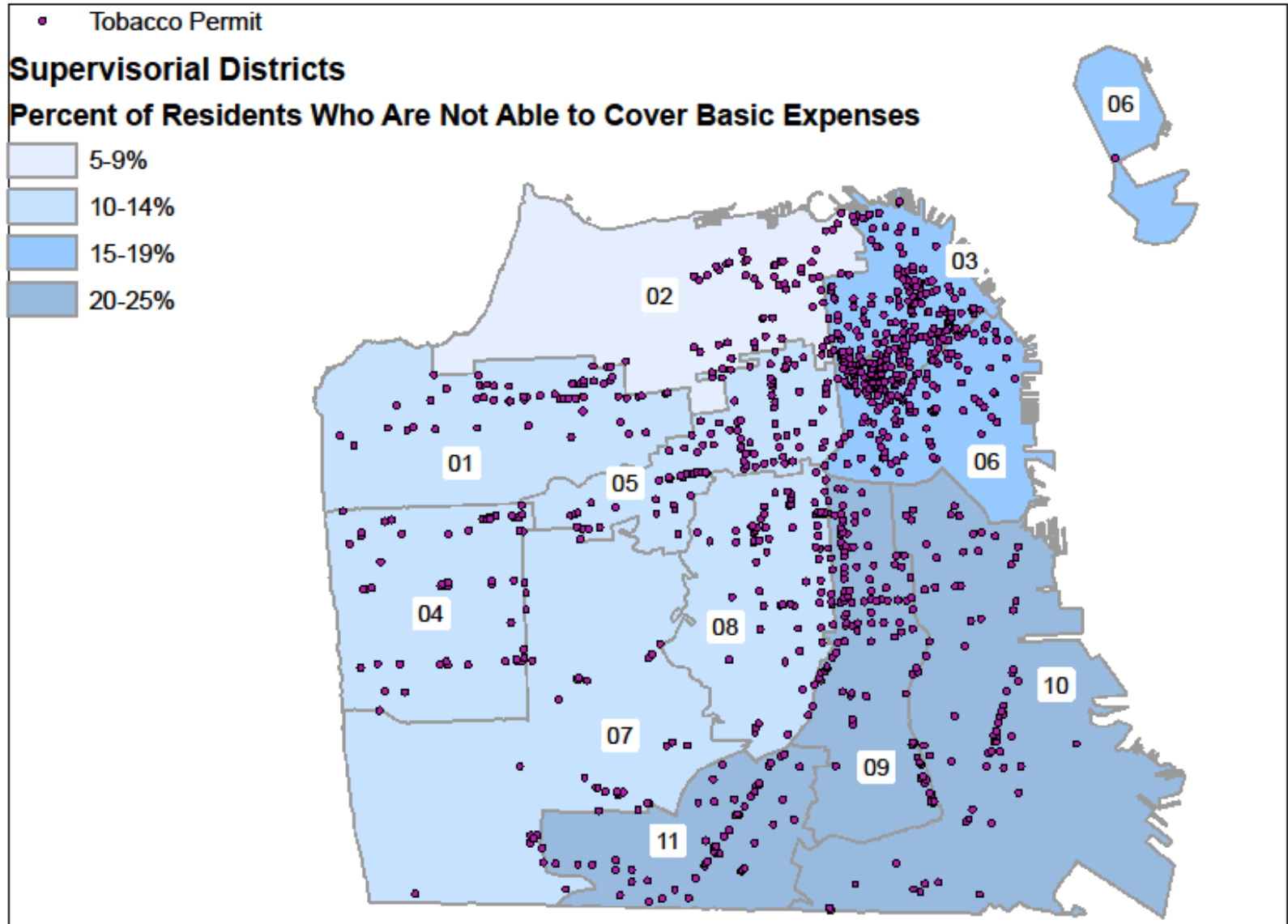
Smoking Prevalence in Relation to Tobacco Retailers

San Francisco Smoking Rates by Zip Code in Relation to Tobacco Retailers



Economic Status of San Francisco Residents

Socioeconomic Status in Relation to Tobacco Permits in San Francisco 2014



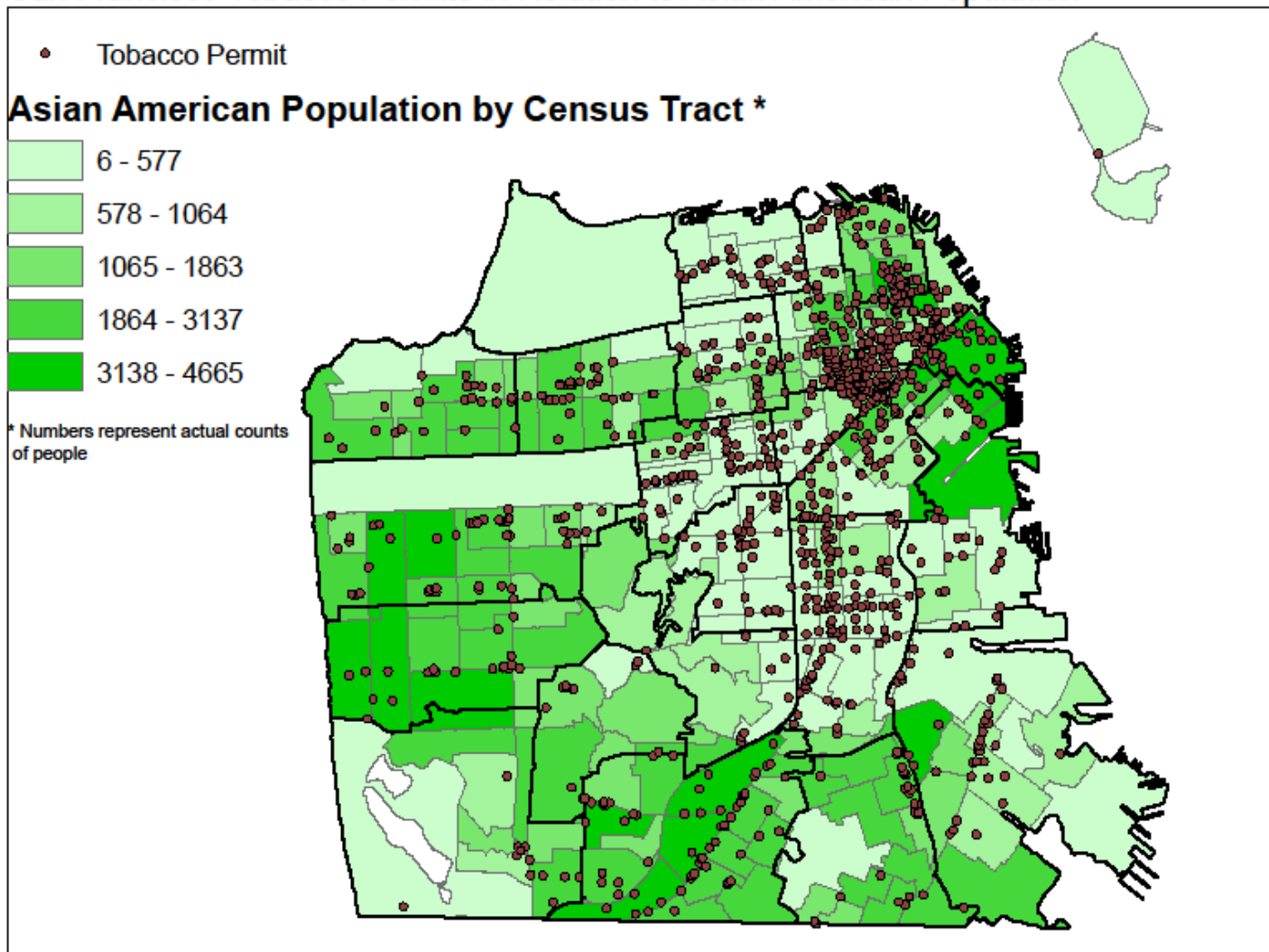
Source: Tobacco Retail Permit List provided by San Francisco Department of Public Health, Environmental Health and Office of the Tax Collector - 2014, SES data from 2013 San Francisco City Survey Report

Wei - 11/2014

Tobacco Permits in Relation to Asian American Populations

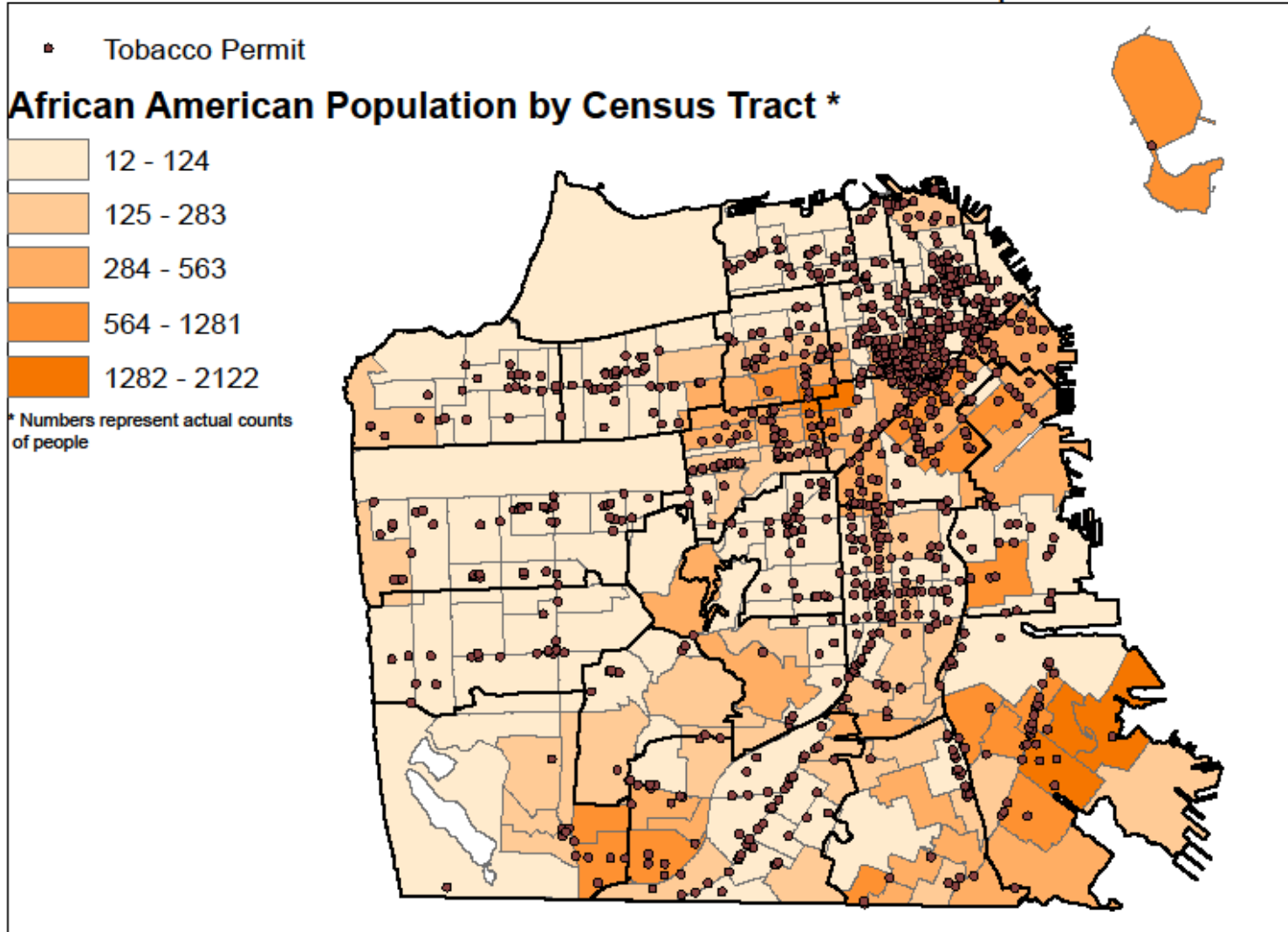
Data from 2010 Census

San Francisco Tobacco Permits in Relation to Asian American Population



Tobacco Permits in Relation to African American Populations Data from 2010 Census

San Francisco Tobacco Permits in Relation to African American Population

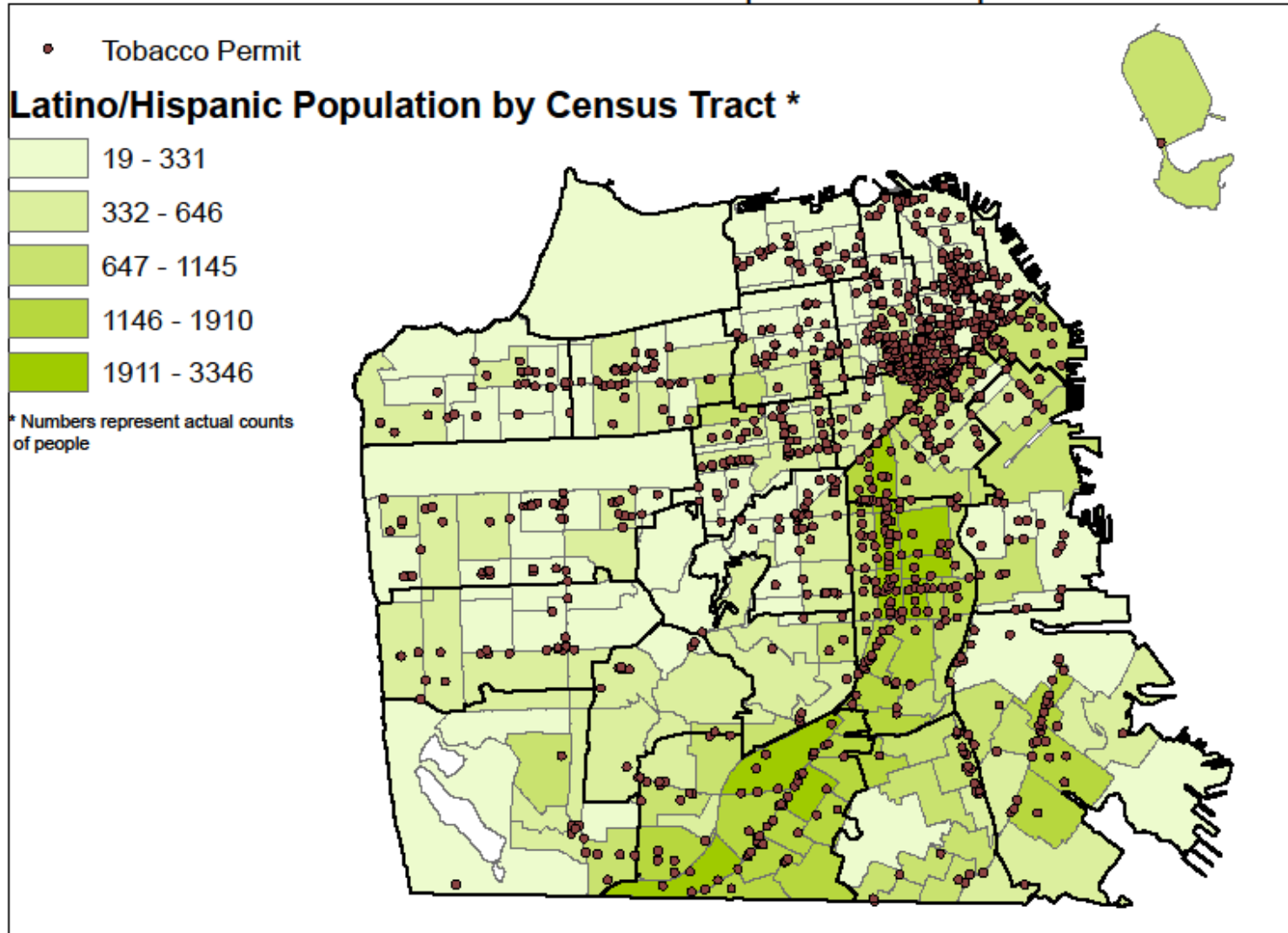


* Numbers represent actual counts of people

Tobacco Permits in Relation to Hispanic/Latino Populations

Data from 2010 Census

San Francisco Tobacco Permits in Relation to Hispanic/Latino Population



Key Points

- Areas with **lower socioeconomic status** and **higher ethnic minority populations** are associated with higher density of tobacco outlets
- Areas with higher concentrations of tobacco permits are associated with a higher prevalence of smoking
- Permits are disproportionately distributed among the supervisorial districts