

**EXHIBIT D**

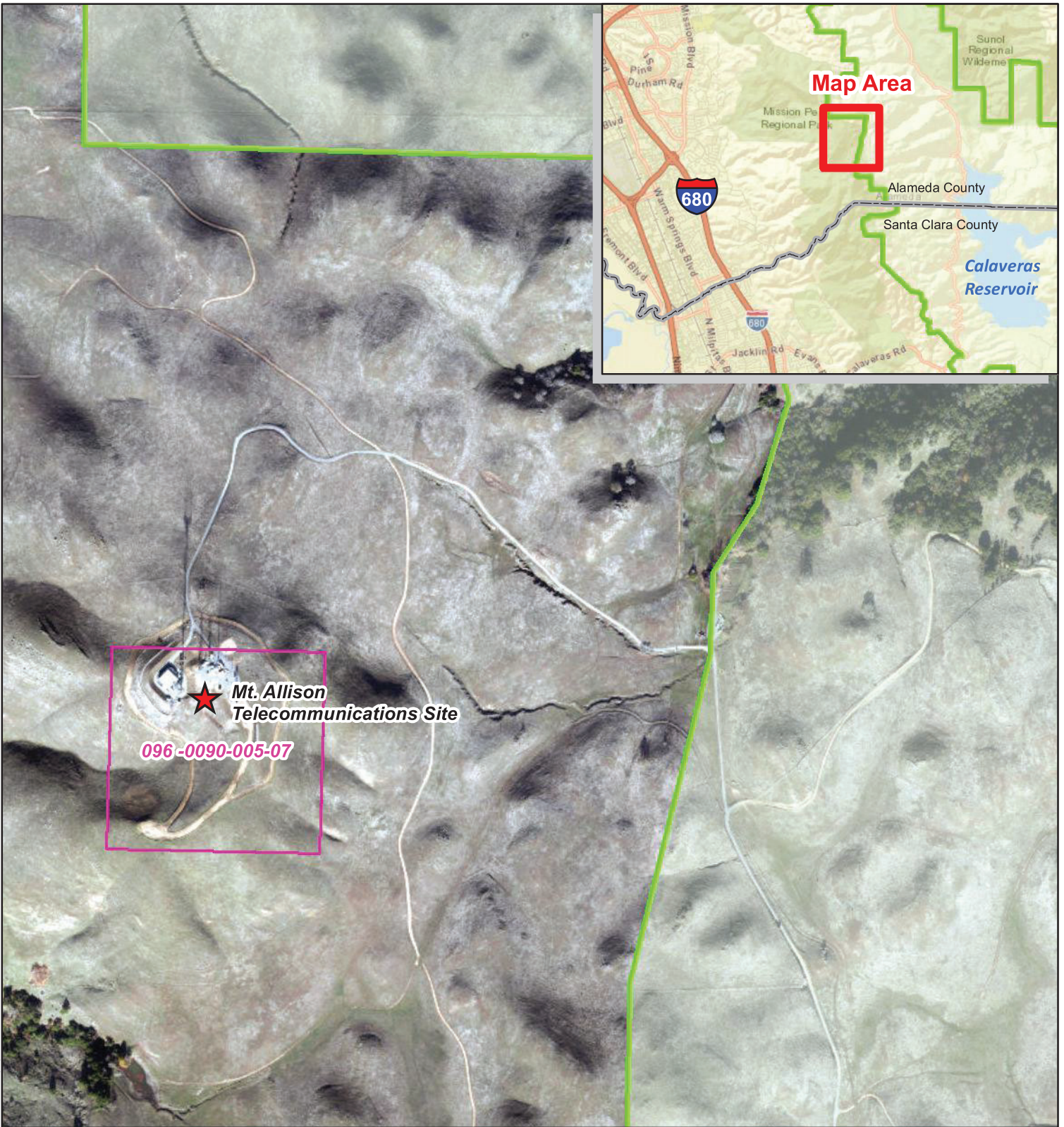
**Additional SFPUC Equipment Rent**

*[see attached]*

## EXHIBIT D

### SFPUC Additional Equipment Rent

SFPUC EQUIPMENT LIST						
A	SHELTER SPACE	Qty.	Cost	Total	Comment	
A.1	<b>Equipment Rack</b>					
	Enclosed Cabinet	1	\$ 565.00	\$ 565.00	2' x 2' floor space, no larger	
	Open Rack	1	\$ 565.00	\$ 565.00	2' x 2' floor space, no larger	
A.2	<b>Utility Connect for Equipment Rack</b>					
	240VAC 25A circuits to DC system rack	0	\$ -	\$ -	TBD depending on utility charge for building or individual	
A.3	<b>Cavity</b>					
	N/A - Integrated into ESS Cabinet	0	\$ -	\$ -	inside cabinet no additional charge	
<b>TOWER SPACE</b>						
B.1	<b>Omni Antennas</b>					
	17.5' Omni Whip Antenna Rx (T-5, 110')	2	\$ 195.00	\$ 390.00	location has been approved by that tower engineer	
	17.5' Omni Whip Antenna Tx (T-5, 80')	1	\$ 195.00	\$ 195.00	location has been approved by that tower engineer	
	Tower Top Amplifier (T5, 110')	1	\$ 60.00	\$ 60.00	location has been approved by that tower engineer	
	GPS Antenna	2	\$ -	\$ -	To be mounted on cable bridge between B-3 and T-5	
	4' Omni Whip Antenna (currently T-4, 23')	1	\$ 140.00	\$ 140.00	Existing on T-4 currently not charged for	
B.2	<b>Microwave Dish Antennas</b>					
	10' Dish Antenna (T-1, 21' CL)	1	\$ 705.00	\$ 705.00	Legs & height selected by Motorola	
	6' Dish Antenna (T-1, 19' CL)	1	\$ 450.00	\$ 450.00	Legs & height selected by Motorola	
	4' Dish Antenna (T-1, 17' CL)	1	\$ 296.00	\$ 296.00	Legs & height selected by Motorola	
<b>Proposed Additional Rent for New Equipment (TOTAL)</b>				<b>\$ 3,366.00</b>		



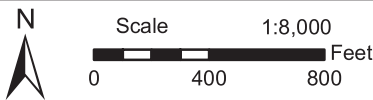
**Legend**

- SFPUC Parcels (Fee Owned)
- Tax Assessor Parcel



**Mt. Allison  
Telecommunications Site  
Alameda County**

The City does not guarantee that the information is accurate or complete. The City is not responsible for any damages arising from the use of data. Users should verify the information before making project commitments.



Date: 12/6/24 Author: JGL