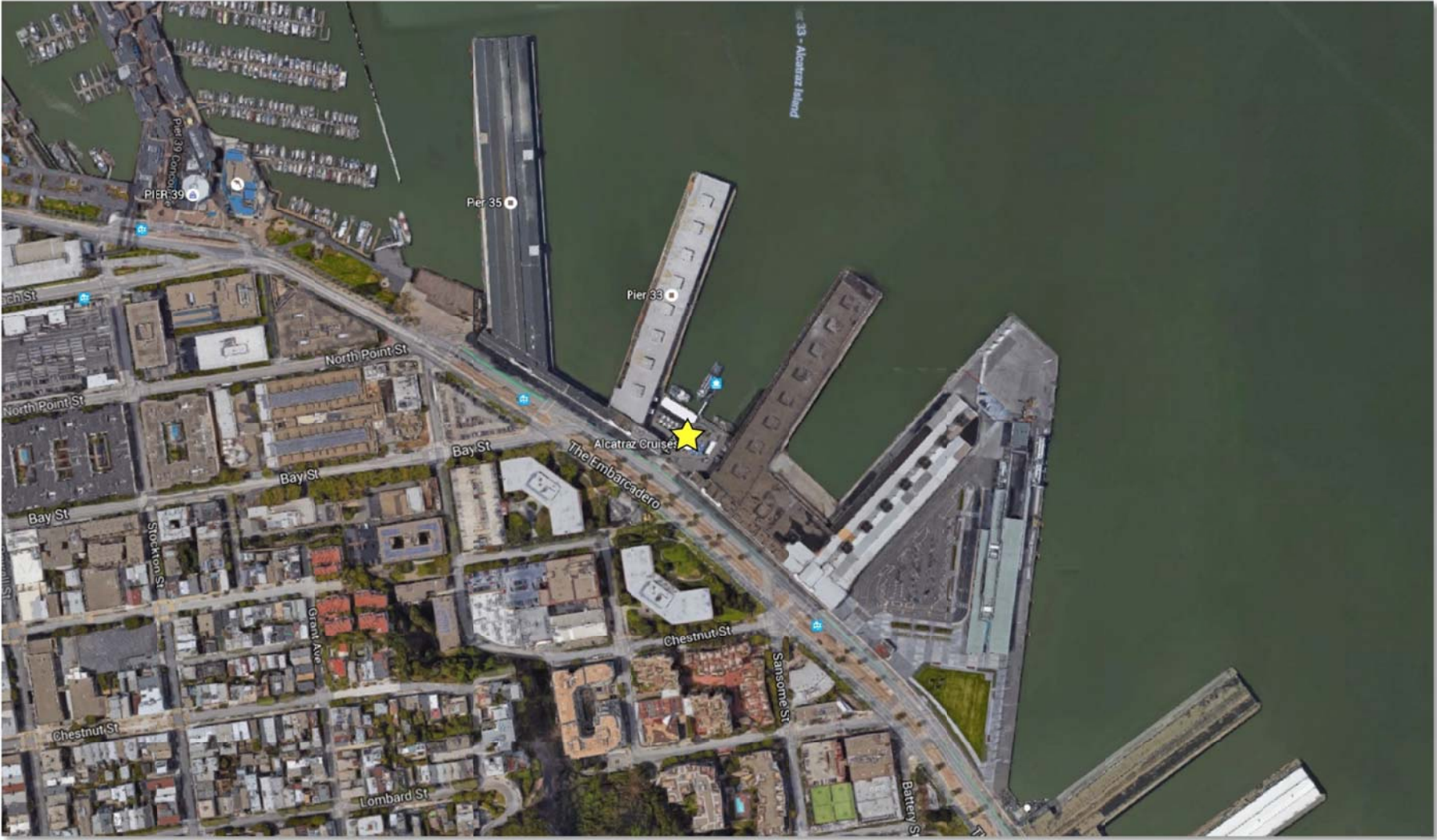


Exhibit A: Site Aerial Map



Alcatraz Embarkation Site indicated by star

Exhibit B: Parcel Maps

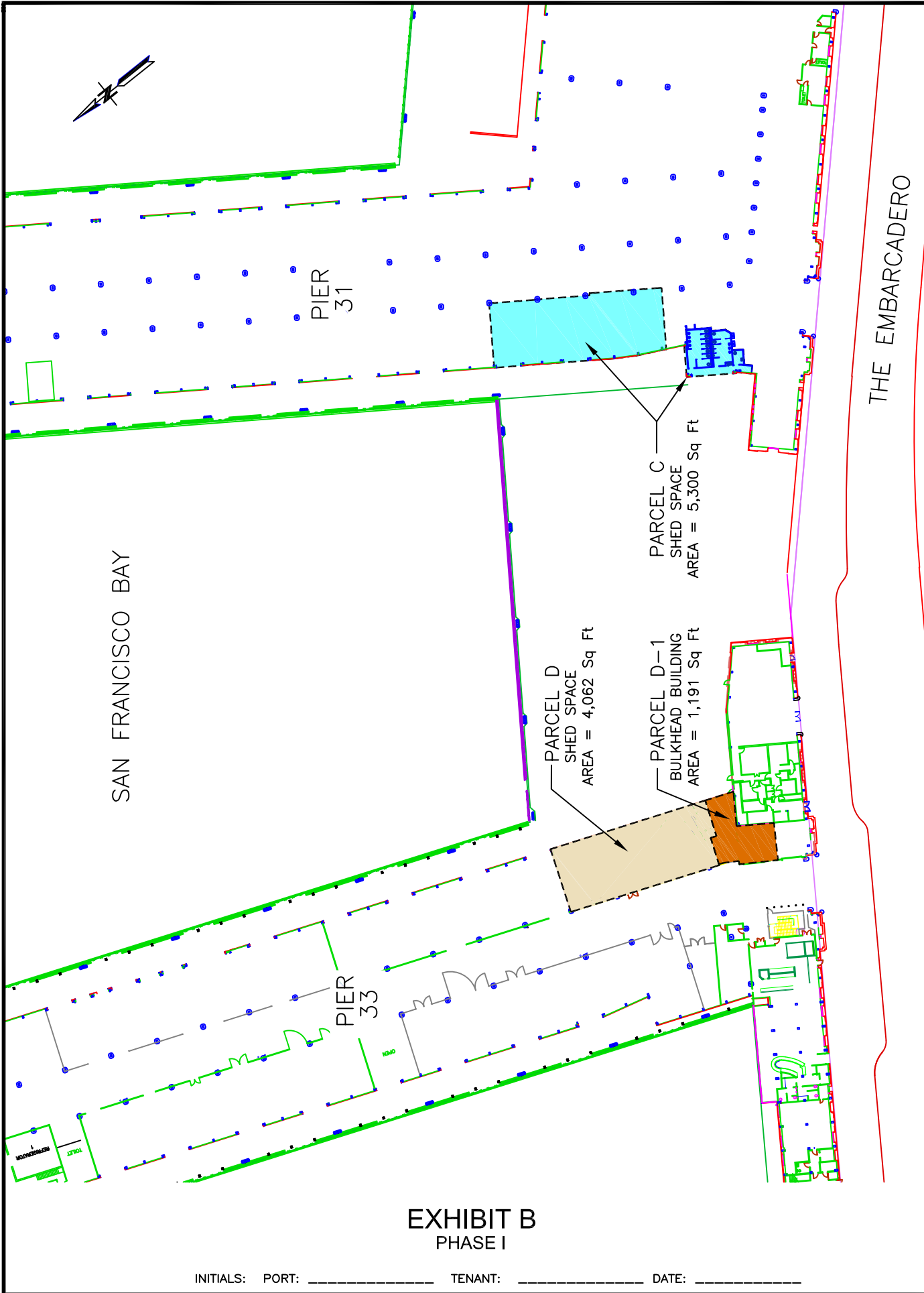



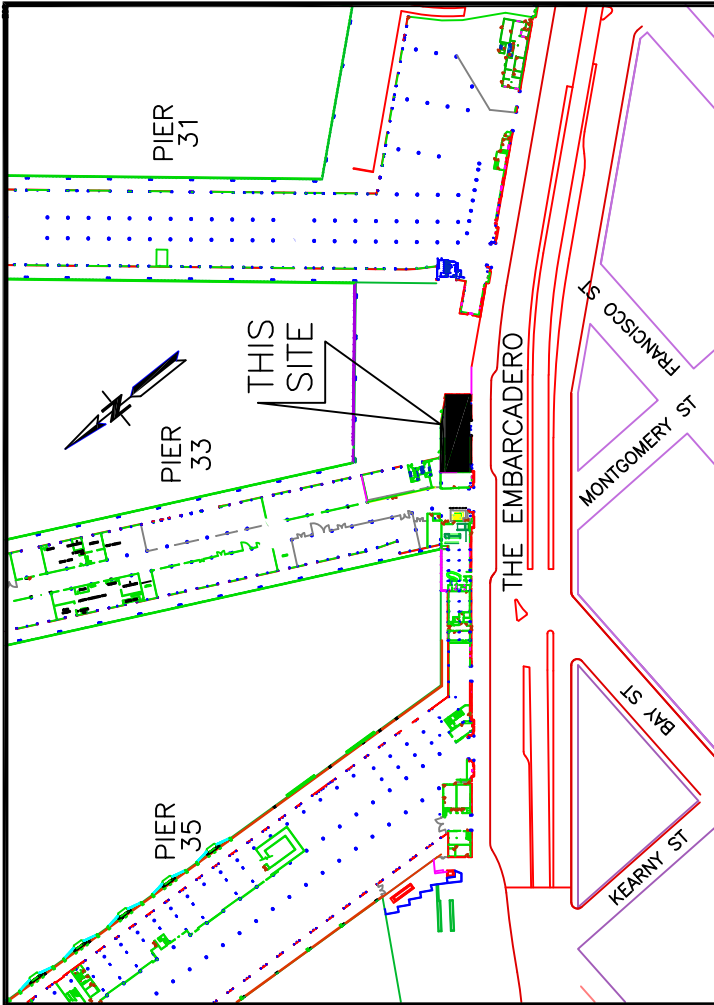
EXHIBIT B
PHASE I

INITIALS: PORT: _____ TENANT: _____ DATE: _____

THE EMBARCADERO

LEASE NO. L-16273	 SAN FRANCISCO PORT COMMISSION PORT OF SAN FRANCISCO DEPARTMENT OF ENGINEERING	TENANT	NPS FERRY PHASE CONCESSIONER I		DRAWN BY: J. DOMINGUEZ CHECKED BY: J. EDWARDS PLACE CODE NO. 1335-00	DATE: NOV. 28th, 2017 SCALE: 1" = 80' SHEET NO. OF SHEETS

G:\06 PROPERTY FILES\Lease Maps\EXHIBITS-PIERS\Plan33,35.p31-35\acorrarREV4.DWG



LOCATION PLAN
NO SCALE

PIER 33 SOUTH BULKHEAD

PARCEL E-1
FIRST FLOOR = 1,382 Sq Ft

PARCEL E
THIRD FLOOR = 4,612 Sq Ft

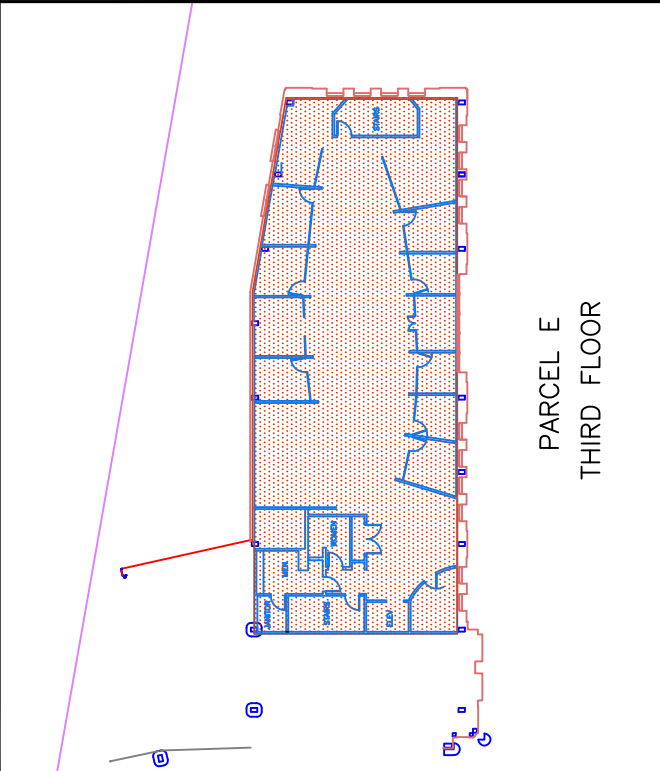
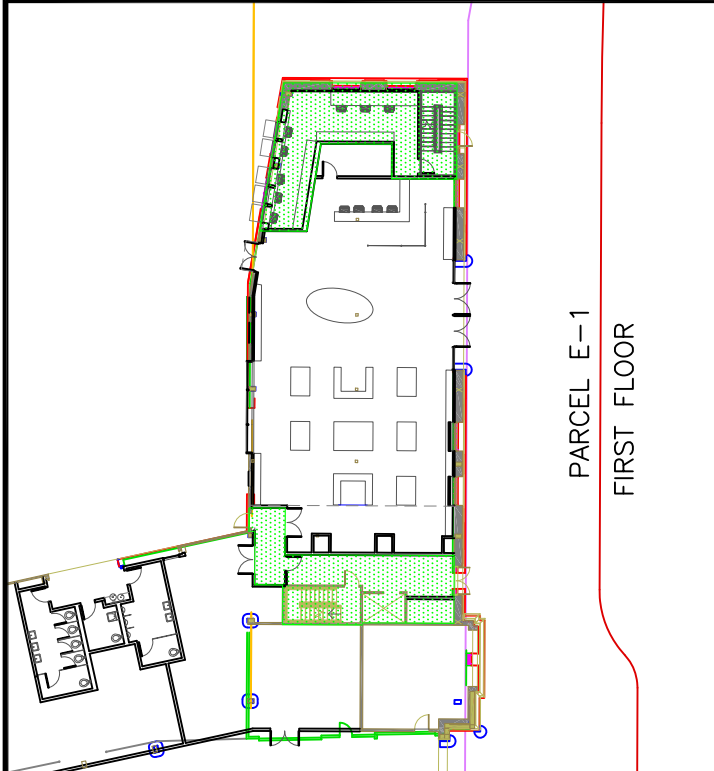

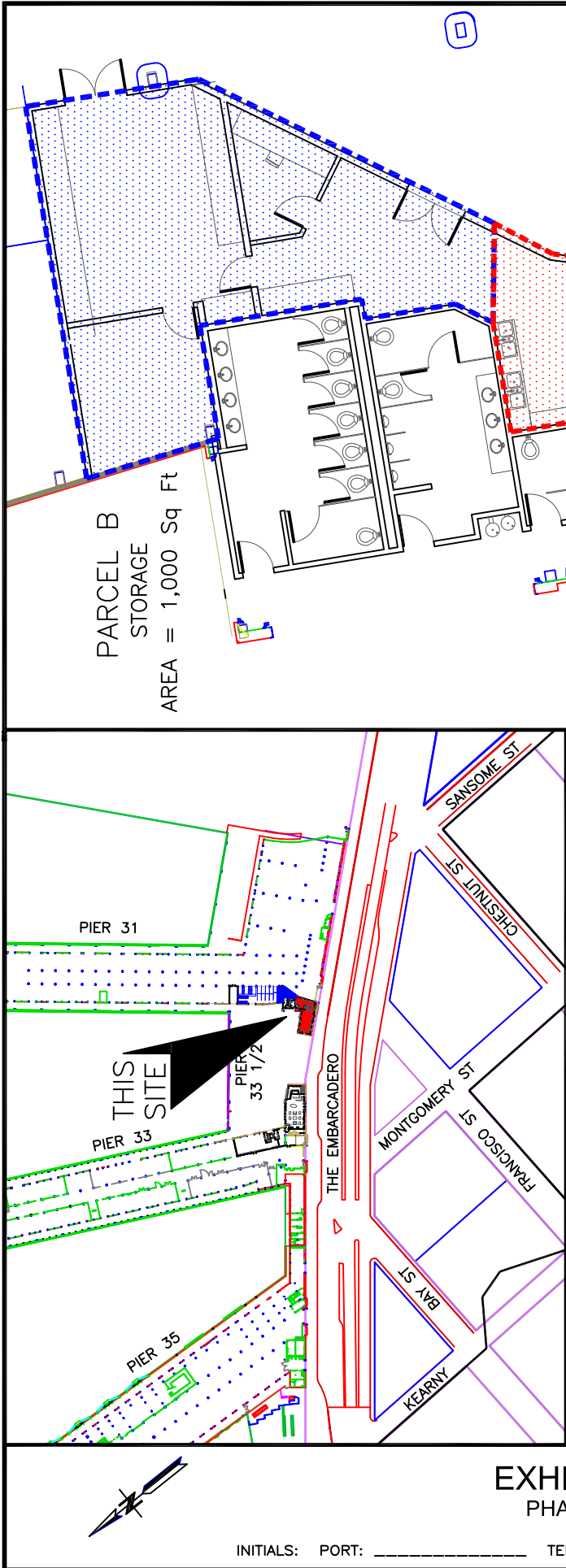


EXHIBIT B-2

PHASE III - FINAL PIER 33 SOUTH BULKHEAD PREMISES

INITIALS: PORT: _____ TENANT: _____ DATE: _____

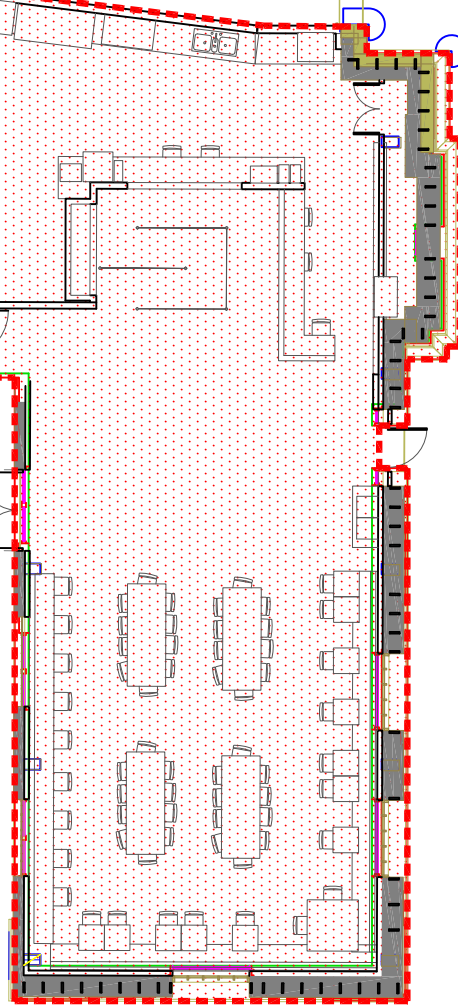
LEASE NO. L-16273	 SAN FRANCISCO PORT COMMISSION PORT OF SAN FRANCISCO DEPARTMENT OF ENGINEERING	TENANT	NPS FERRY PHASE III CONCESSIONER	
		DRAWN BY: J. DOMINGUEZ CHECKED BY: J. EDWARDS PLACE CODE NO. 1335-00	DATE: NOV. 28, 2017 SCALE: 1" = 40' SHEET NO. OF SHEETS	



LOCATION PLAN
NO SCALE

PARCEL A
CAFE/ KITCHEN
AREA = 2,760 Sq Ft


PIER 31



THE EMBARCADERO

EXHIBIT B
PHASE I

INITIALS: PORT: _____ TENANT: _____ DATE: _____

LEASE NO. L-16274	 SAN FRANCISCO PORT COMMISSION PORT OF SAN FRANCISCO DEPARTMENT OF ENGINEERING	TENANT	GOLDEN GATE NATIONAL PARKS CONSERVANCY	PHASE I	DRAWN BY: J. DOMINGUEZ CHECKED BY: J. EDWARDS PLACE CODE NO. 1335-00	DATE: NOV. 28th, 2017 SCALE: 1" = 15' SHEET NO. OF SHEETS
		1335-00				

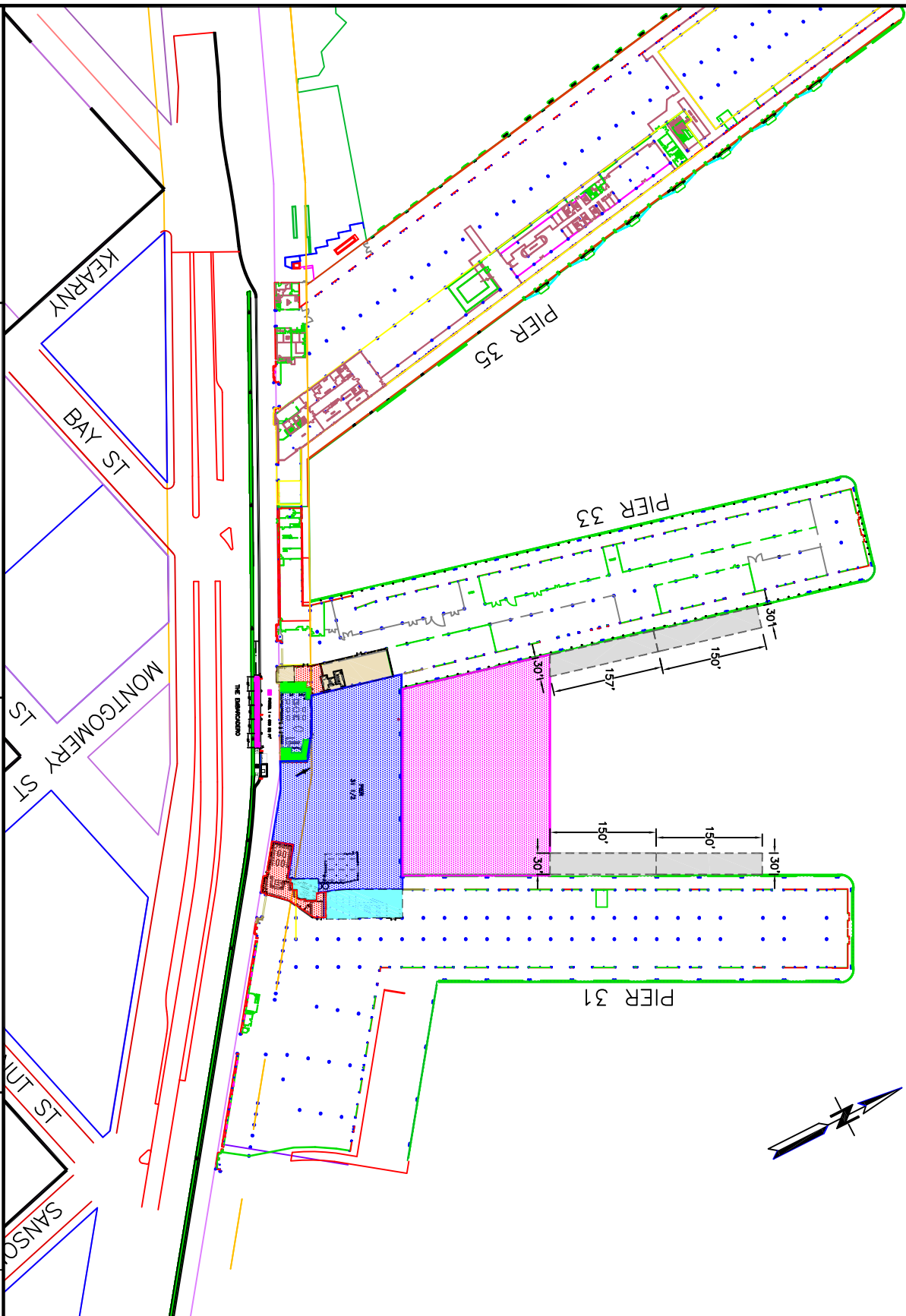


EXHIBIT A

INITIALS: PORT: _____ TENANT: _____ DATE: _____

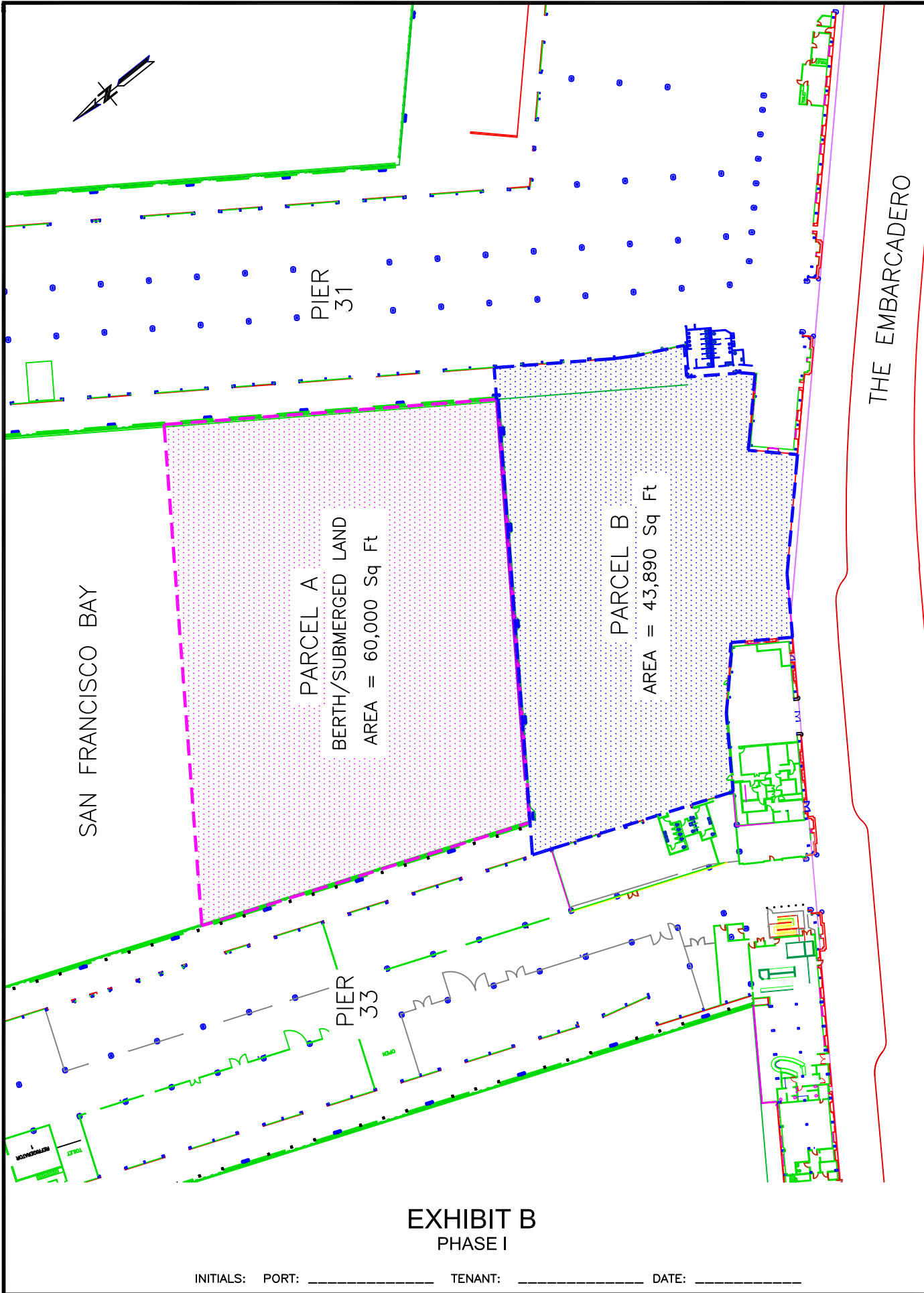
APPROVED BY
 SAN FRANCISCO PORT COMMISSION
 DATE _____
 CHIEF HARBOR ENGINEER _____

 SAN FRANCISCO PORT COMMISSION
 PORT OF SAN FRANCISCO
 DEPARTMENT OF ENGINEERING


ALCATRAZ LANDING
 VICINITY MAP

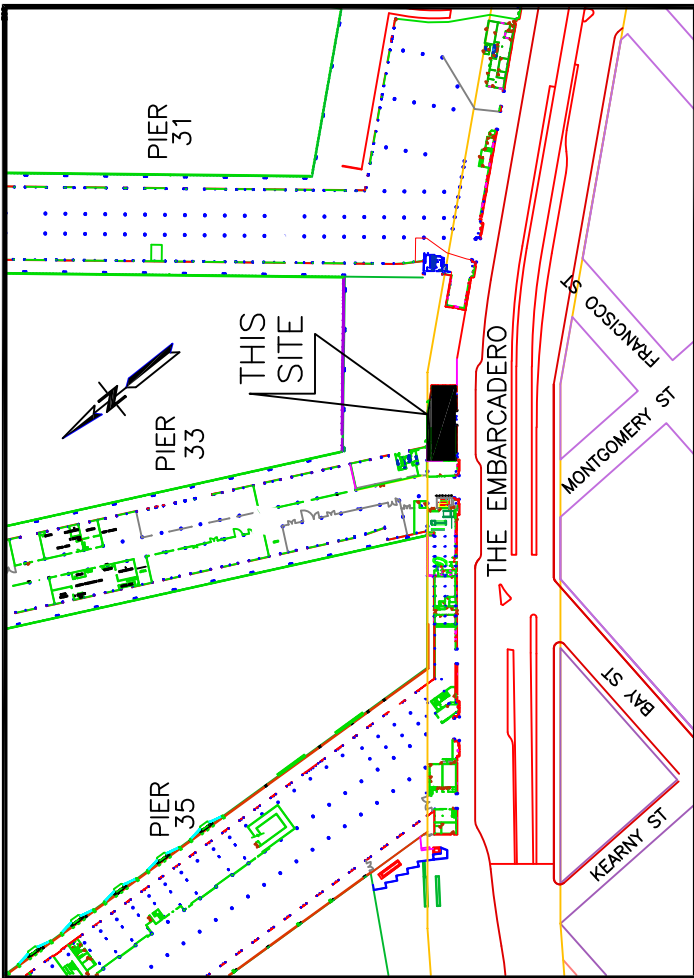
DRAWN BY : J. DOMINGUEZ	DATE: JULY 26TH 2017
CHECKED BY : J. EDWARDS	SCALE : 1"=200'
DRAWING NO.	SHEET NO.
OF SHEETS	

F:\DEPARTMENT PROJECTS\West End\Alcatraz Landing\A-31 Alcatraz Landing\A31-35 Alcatraz RESOLVE



INITIALS: PORT: _____ TENANT: _____ DATE: _____

LEASE NO. L-16273	 SAN FRANCISCO PORT COMMISSION PORT OF SAN FRANCISCO DEPARTMENT OF ENGINEERING	TENANT	NPS FERRY PHASE I		DRAWN BY: J. DOMINGUEZ DATE: JULY 26th, 2017 CHECKED BY: J. EDWARDS SCALE: 1" = 80' PLACE CODE NO. 1335-00 SHEET NO. OF SHEETS
		CONCESSIONER		1335-00	OF



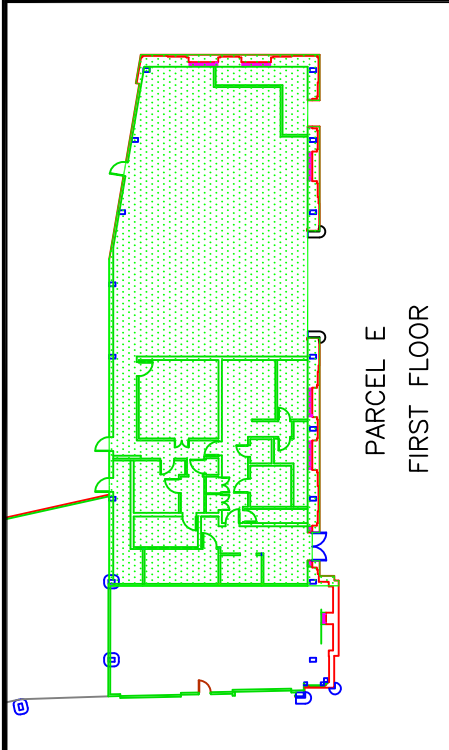
LOCATION PLAN
NO SCALE

PIER 33 SOUTH BULKHEAD

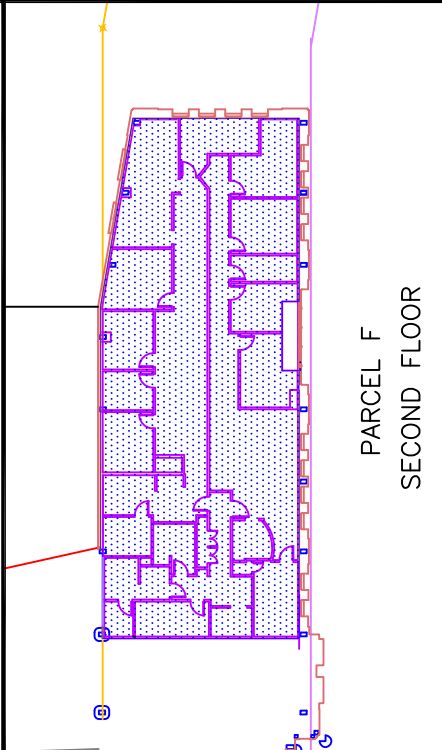
PARCEL E
FIRST FLOOR = 4,612 Sq Ft

PARCEL F
SECOND FLOOR = 4,555 Sq Ft

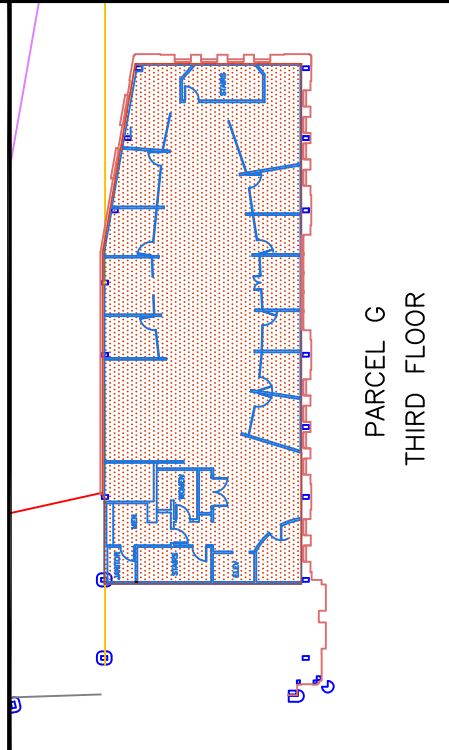
PARCEL G
THIRD FLOOR = 4,612 Sq Ft



PARCEL E
FIRST FLOOR



PARCEL F
SECOND FLOOR



PARCEL G
THIRD FLOOR

EXHIBIT B-1
PHASE II

INITIALS: PORT: _____ TENANT: _____ DATE: _____

LEASE NO. L-16273		TENANT	NPS FERRY PHASE CONCESSIONER II	DRAWN BY: J. DOMINGUEZ CHECKED BY: J. EDWARDS PLACE CODE NO. 1335-00	DATE: NOV. 28, 2017 SCALE: 1" = 40' SHEET NO. OF SHEETS

PIER 31 North & 33 South BERTHING

■ PARCEL J BERTHING = 18,105 Sq Ft

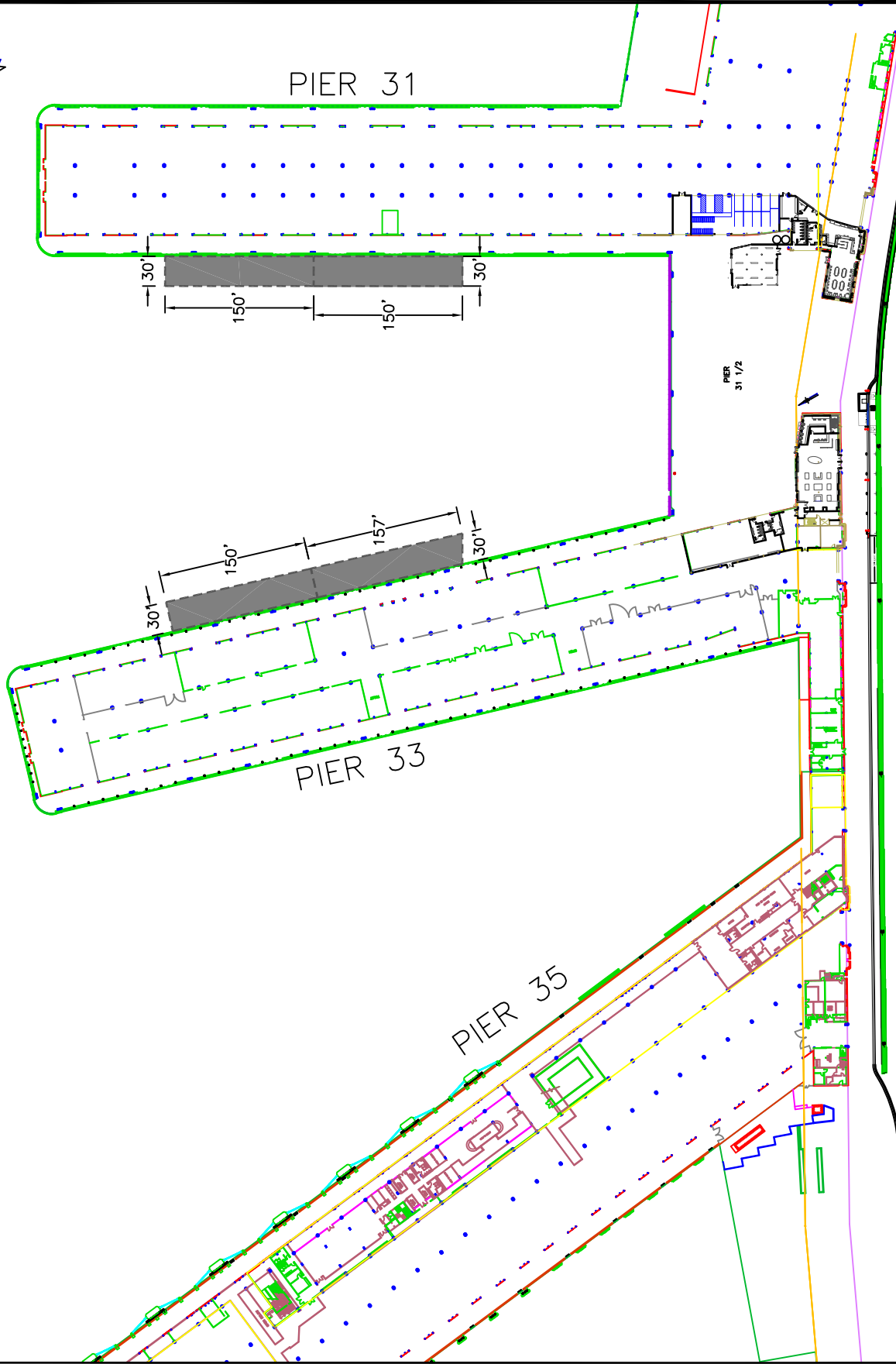



EXHIBIT B-3

INITIALS: _____ PORT: _____ TENANT: _____ DATE: _____

LEASE NO. L-16723	 SAN FRANCISCO PORT COMMISSION PORT OF SAN FRANCISCO DEPARTMENT OF ENGINEERING	TENANT	NPS FERRY	DRAWN BY: J. DOMINGUEZ	DATE: DEC. 07, 2017
			CONCESSIONER	CHECKED BY: J. EDWARDS	SCALE: 1"=150'
			PLACE CODE NO. 1234-56		SHEET NO. OF SHEETS

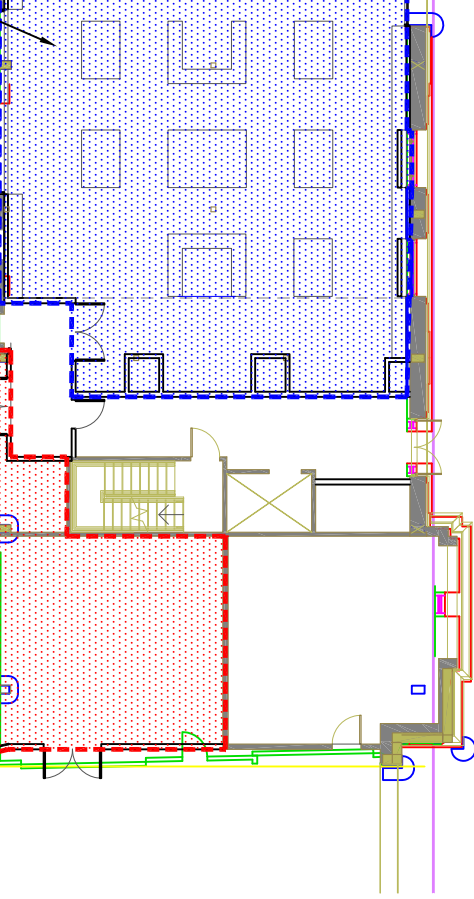
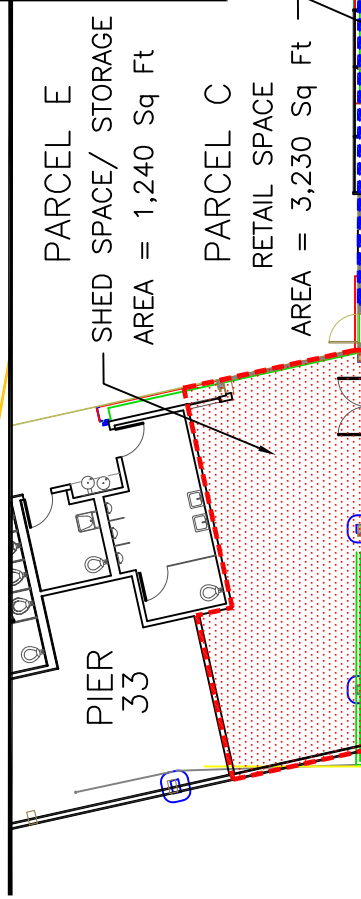
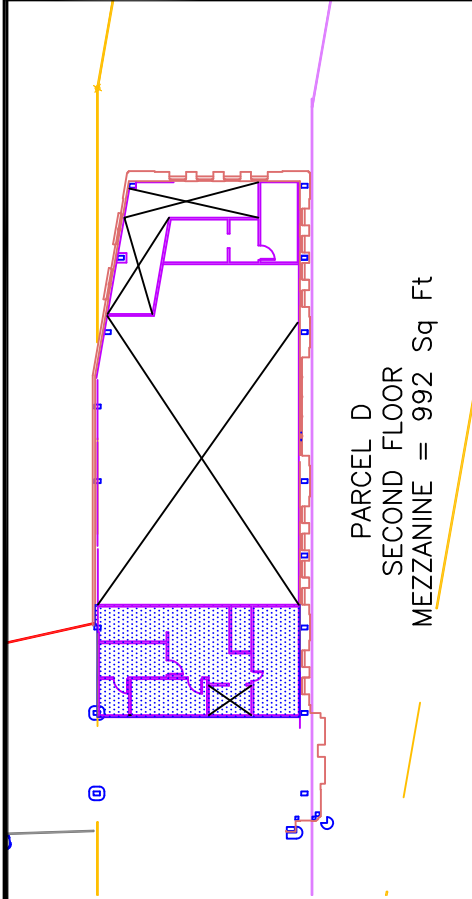
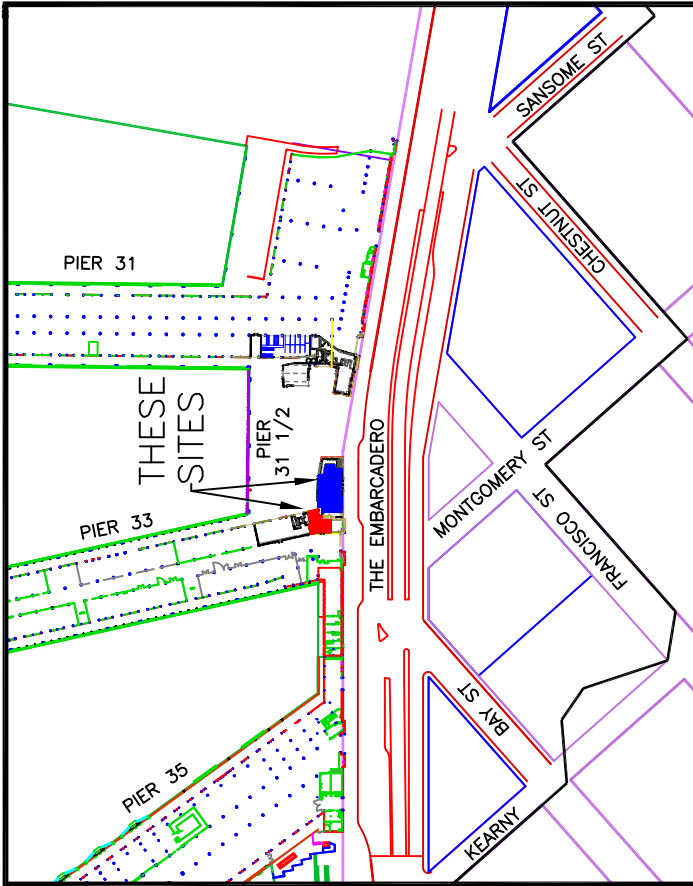


EXHIBIT B-1
PHASE II

INITIALS: PORT: _____ TENANT: _____ DATE: _____

THE EMBARCADERO

LEASE NO. L-16274	 SAN FRANCISCO PORT COMMISSION PORT OF SAN FRANCISCO DEPARTMENT OF ENGINEERING	TENANT GOLDEN GATE NATIONAL PARKS CONSERVANCY	PHASE II	DRAWN BY: J. DOMINGUEZ	DATE: DEC. 26th, 2017
				CHECKED BY: J. EDWARDS	SCALE: 1" = 20'
		PLACE CODE NO. 1335-00	SHEET NO. OF		

Exhibit C: Updated Wage Determination

REGISTER OF WAGE DETERMINATIONS UNDER
THE SERVICE CONTRACT ACT
By direction of the Secretary of Labor

U. S. DEPARTMENT OF LABOR
EMPLOYMENT STANDARDS ADMINISTRATION
WAGE AND HOUR DIVISION
WASHINGTON D. C. 20210

Daniel W. Simms
Director

Division of
Wage Determinations

Wage Determination No. : 2015-5637
Revision No. : 9
Date Of Last Revision: 05/17/2018

Note: Under Executive Order (EO) 13658, an hourly minimum wage of \$10.35 for calendar year 2018 applies to all contracts subject to the Service Contract Act for which the contract is awarded (and any solicitation was issued) on or after January 1, 2015. If this contract is covered by the EO, the contractor must pay all workers in any classification listed on this wage determination at least \$10.35 per hour (or the applicable wage rate listed on this wage determination, if it is higher) for all hours spent performing on the contract in calendar year 2018. The EO minimum wage rate will be adjusted annually. Additional information on contractor requirements and worker protections under the EO is available at www.dol.gov/whd/govcontracts

State: California

Area: California Counties of San Francisco, San Mateo

OCCUPATION NOTE:

Janitor: The rate listed on this WD for the "Janitor" occupation applies only to San Mateo county. Please refer to WD 1974-1257 to obtain the wage rate and fringe benefits applicable to the "Janitor" occupation in San Francisco County.

****Fringe Benefits Required Follow the Occupational Listing****

OCCUPATION CODE - TITLE	FOOTNOTE	RATE
01000 - Administrative Support And Clerical Occupations		
01011 - Accounting Clerk I		21.07
01012 - Accounting Clerk II		23.66
01013 - Accounting Clerk III		26.47
01020 - Administrative Assistant		36.84
01035 - Court Reporter		37.17
01041 - Customer Service Representative I		19.06
01042 - Customer Service Representative II		21.43
01043 - Customer Service Representative III		23.38
01051 - Data Entry Operator I		16.07
01052 - Data Entry Operator II		17.54
01060 - Dispatcher, Motor Vehicle		29.13
01070 - Document Preparation Clerk		17.31
01090 - Duplicating Machine Operator		17.31
01111 - General Clerk I		16.87
01112 - General Clerk II		18.40
01113 - General Clerk III		20.66
01120 - Housing Referral Assistant		28.83
01141 - Messenger Courier		17.18
01191 - Order Clerk I		19.22
01192 - Order Clerk II		20.98
01261 - Personnel Assistant (Employment) I		20.61
01262 - Personnel Assistant (Employment) II		23.06
01263 - Personnel Assistant (Employment) III		25.70

01270 - Production Control Clerk	28.11
01290 - Rental Clerk	19.43
01300 - Scheduler, Maintenance	23.30
01311 - Secretary I	23.30
01312 - Secretary II	25.86
01313 - Secretary III	28.83
01320 - Service Order Dispatcher	28.67
01410 - Supply Technician	36.84
01420 - Survey Worker	26.04
01460 - Switchboard Operator/Receptionist	17.88
01531 - Travel Clerk I	15.41
01532 - Travel Clerk II	17.34
01533 - Travel Clerk III	19.53
01611 - Word Processor I	22.83
01612 - Word Processor II	25.64
01613 - Word Processor III	28.68
05000 - Automotive Service Occupations	
05005 - Automobile Body Repairer, Fiberglass	28.95
05010 - Automotive Electrician	24.75
05040 - Automotive Glass Installer	22.15
05070 - Automotive Worker	24.75
05110 - Mobile Equipment Servicer	21.54
05130 - Motor Equipment Metal Mechanic	25.85
05160 - Motor Equipment Metal Worker	23.66
05190 - Motor Vehicle Mechanic	25.64
05220 - Motor Vehicle Mechanic Helper	20.21
05250 - Motor Vehicle Upholstery Worker	22.61
05280 - Motor Vehicle Wrecker	23.66
05310 - Painter, Automotive	24.75
05340 - Radiator Repair Specialist	23.66
05370 - Tire Repairer	18.14
05400 - Transmission Repair Specialist	25.85
07000 - Food Preparation And Service Occupations	
07010 - Baker	18.24
07041 - Cook I	17.11
07042 - Cook II	20.06
07070 - Dishwasher	13.31
07130 - Food Service Worker	14.20
07210 - Meat Cutter	19.15
07260 - Waiter/Waitress	14.32
09000 - Furniture Maintenance And Repair Occupations	
09010 - Electrostatic Spray Painter	22.47
09040 - Furniture Handler	16.69
09080 - Furniture Refinisher	24.00
09090 - Furniture Refinisher Helper	19.60
09110 - Furniture Repairer, Minor	21.31
09130 - Upholsterer	23.25
11000 - General Services And Support Occupations	
11030 - Cleaner, Vehicles	14.27
11060 - Elevator Operator	14.89
11090 - Gardener	24.32
11122 - Housekeeping Aide	14.89
11150 - Janitor	14.89
11210 - Laborer, Grounds Maintenance	18.72
11240 - Maid or Houseman	18.74
11260 - Pruner	17.19
11270 - Tractor Operator	22.48
11330 - Trail Maintenance Worker	18.72
11360 - Window Cleaner	16.07
12000 - Health Occupations	
12010 - Ambulance Driver	23.48
12011 - Breath Alcohol Technician	27.11
12012 - Certified Occupational Therapist Assistant	37.17

(see 1)

12015 - Certi fi ed Physi cal Therapi st Assi stant	35. 41
12020 - Dental Assi stant	24. 75
12025 - Dental Hygi eni st	55. 44
12030 - EKG Techni ci an	40. 40
12035 - El ectroneurodi agnosti c Technol ogi st	40. 40
12040 - Emergency Medi cal Techni ci an	23. 48
12071 - Li censed Practi cal Nurse I	24. 22
12072 - Li censed Practi cal Nurse II	27. 11
12073 - Li censed Practi cal Nurse III	30. 22
12100 - Medi cal Assi stant	23. 27
12130 - Medi cal Laboratory Techni ci an	29. 72
12160 - Medi cal Record Clerk	23. 26
12190 - Medi cal Record Techni ci an	26. 02
12195 - Medi cal Transcri pti oni st	27. 36
12210 - Nucl ear Medi ci ne Technol ogi st	60. 74
12221 - Nursi ng Assi stant I	16. 15
12222 - Nursi ng Assi stant II	18. 16
12223 - Nursi ng Assi stant III	19. 81
12224 - Nursi ng Assi stant IV	22. 24
12235 - Opti cal Di spenser	25. 61
12236 - Opti cal Techni ci an	24. 22
12250 - Pharmacy Techni ci an	24. 67
12280 - Phl ebotomi st	23. 68
12305 - Radi ol ogi c Technol ogi st	50. 59
12311 - Regi stered Nurse I	43. 85
12312 - Regi stered Nurse II	53. 66
12313 - Regi stered Nurse II, Speci al i st	53. 66
12314 - Regi stered Nurse III	64. 90
12315 - Regi stered Nurse III, Anestheti st	64. 90
12316 - Regi stered Nurse IV	77. 80
12317 - Schedul er (Drug and Al cehol Testi ng)	34. 02
12320 - Substance Abuse Treatment Counsel or	23. 67
13000 - Informati on And Arts Occupati ons	
13011 - Exhi bi ts Speci al i st I	25. 70
13012 - Exhi bi ts Speci al i st II	31. 84
13013 - Exhi bi ts Speci al i st III	38. 94
13041 - Illu strator I	29. 12
13042 - Illu strator II	36. 07
13043 - Illu strator III	44. 12
13047 - Li brari an	39. 95
13050 - Li brary Ai de/Clerk	22. 28
13054 - Li brary Informati on Technol ogy Systems Admi ni strator	36. 10
13058 - Li brary Techni ci an	28. 71
13061 - Medi a Speci al i st I	26. 03
13062 - Medi a Speci al i st II	29. 12
13063 - Medi a Speci al i st III	32. 46
13071 - Photograph er I	22. 43
13072 - Photograph er II	25. 09
13073 - Photograph er III	31. 05
13074 - Photograph er IV	38. 02
13075 - Photograph er V	45. 99
13090 - Techni cal Order Li brary Clerk	23. 47
13110 - Vi deo Tel econference Techni ci an	25. 63
14000 - Informati on Technol ogy Occupati ons	
14041 - Computer Operator I	19. 80
14042 - Computer Operator II	22. 18
14043 - Computer Operator III	24. 69
14044 - Computer Operator IV	27. 43
14045 - Computer Operator V	30. 39
14071 - Computer Programmer I	(see 2)
14072 - Computer Programmer II	(see 2)
14073 - Computer Programmer III	(see 2)

14074 - Computer Programmer IV	(see 2)	
14101 - Computer Systems Analyst I	(see 2)	
14102 - Computer Systems Analyst II	(see 2)	
14103 - Computer Systems Analyst III	(see 2)	
14150 - Peripheral Equipment Operator		19.80
14160 - Personal Computer Support Technician		27.43
14170 - System Support Specialist		40.89
15000 - Instructional Occupations		
15010 - Aircrew Training Devices Instructor (Non-Rated)		39.10
15020 - Aircrew Training Devices Instructor (Rated)		47.30
15030 - Air Crew Training Devices Instructor (Pilot)		56.69
15050 - Computer Based Training Specialist / Instructor		39.10
15060 - Educational Technologist		35.06
15070 - Flight Instructor (Pilot)		56.69
15080 - Graphic Artist		35.46
15085 - Maintenance Test Pilot, Fixed, Jet/Prop		56.69
15086 - Maintenance Test Pilot, Rotary Wing		56.69
15088 - Non-Maintenance Test/Co-Pilot		56.69
15090 - Technical Instructor		33.03
15095 - Technical Instructor/Course Developer		40.40
15110 - Test Proctor		26.67
15120 - Tutor		26.67
16000 - Laundry, Dry-Cleaning, Pressing And Related Occupations		
16010 - Assembler		15.65
16030 - Counter Attendant		15.65
16040 - Dry Cleaner		17.89
16070 - Finisher, Flatwork, Machine		15.65
16090 - Presser, Hand		15.65
16110 - Presser, Machine, Drycleaning		15.65
16130 - Presser, Machine, Shirts		15.65
16160 - Presser, Machine, Wearing Apparel, Laundry		15.65
16190 - Sewing Machine Operator		18.64
16220 - Tailor		19.38
16250 - Washer, Machine		16.40
19000 - Machine Tool Operation And Repair Occupations		
19010 - Machine-Tool Operator (Tool Room)		27.63
19040 - Tool And Die Maker		32.59
21000 - Materials Handling And Packing Occupations		
21020 - Forklift Operator		19.56
21030 - Material Coordinator		28.11
21040 - Material Expediter		28.11
21050 - Material Handling Laborer		16.69
21071 - Order Filler		15.60
21080 - Production Line Worker (Food Processing)		19.56
21110 - Shipping Packer		18.62
21130 - Shipping/Receiving Clerk		18.62
21140 - Store Worker I		15.84
21150 - Stock Clerk		21.80
21210 - Tools And Parts Attendant		19.56
21410 - Warehouse Specialist		19.56
23000 - Mechanics And Maintenance And Repair Occupations		
23010 - Aerospace Structural Welder		36.92
23019 - Aircraft Logs and Records Technician		29.71
23021 - Aircraft Mechanic I		35.11
23022 - Aircraft Mechanic II		36.92
23023 - Aircraft Mechanic III		38.48
23040 - Aircraft Mechanic Helper		25.65
23050 - Aircraft, Painter		33.06
23060 - Aircraft Servicer		29.71
23070 - Aircraft Survival Flight Equipment Technician		33.06
23080 - Aircraft Worker		31.53
23091 - Aircrew Life Support Equipment (ALSE) Mechanic		31.53

I

23092 - Aircrew Life Support Equipment (ALSE) Mechanic II	35.11
23110 - Appliance Mechanic	22.85
23120 - Bicycle Repairer	22.47
23125 - Cable Splicer	32.68
23130 - Carpenter, Maintenance	31.52
23140 - Carpet Layer	31.96
23160 - Electrician, Maintenance	49.53
23181 - Electronics Technician Maintenance I	30.54
23182 - Electronics Technician Maintenance II	32.27
23183 - Electronics Technician Maintenance III	34.02
23260 - Fabric Worker	26.60
23290 - Fire Alarm System Mechanic	26.76
23310 - Fire Extinguisher Repairer	25.84
23311 - Fuel Distribution System Mechanic	32.68
23312 - Fuel Distribution System Operator	25.84
23370 - General Maintenance Worker	26.76
23380 - Ground Support Equipment Mechanic	35.11
23381 - Ground Support Equipment Servicer	29.71
23382 - Ground Support Equipment Worker	31.53
23391 - Gunsmith I	25.84
23392 - Gunsmith II	29.34
23393 - Gunsmith III	32.68
23410 - Heating, Ventilation And Air-Conditioning Mechanic	29.47
23411 - Heating, Ventilation And Air Conditioning Mechanic (Research Facility)	30.98
23430 - Heavy Equipment Mechanic	35.90
23440 - Heavy Equipment Operator	39.20
23460 - Instrument Mechanic	34.64
23465 - Laboratory/Shelter Mechanic	31.00
23470 - Laborer	16.00
23510 - Locksmith	26.95
23530 - Machinery Maintenance Mechanic	37.64
23550 - Machinist, Maintenance	29.58
23580 - Maintenance Trades Helper	18.69
23591 - Metrology Technician I	34.64
23592 - Metrology Technician II	36.41
23593 - Metrology Technician III	37.95
23640 - Millwright	32.68
23710 - Office Appliance Repairer	23.08
23760 - Painter, Maintenance	30.54
23790 - Pipefitter, Maintenance	34.82
23810 - Plumber, Maintenance	34.44
23820 - Pneudraulic Systems Mechanic	32.68
23850 - Rigger	32.53
23870 - Scale Mechanic	29.34
23890 - Sheet-Metal Worker, Maintenance	36.39
23910 - Small Engine Mechanic	23.14
23931 - Telecommunications Mechanic I	32.99
23932 - Telecommunications Mechanic II	34.68
23950 - Telephone Lineman	32.39
23960 - Welder, Combination, Maintenance	32.75
23965 - Well Driller	32.68
23970 - Woodcraft Worker	32.68
23980 - Woodworker	25.84
24000 - Personal Needs Occupations	
24550 - Case Manager	21.06
24570 - Child Care Attendant	14.93
24580 - Child Care Center Clerk	18.99
24610 - Chore Aide	12.21
24620 - Family Readiness And Support Services Coordinator	21.06

24630 - Homemaker	21.06
25000 - Plant And System Operations Occupations	
25010 - Boiler Tender	47.33
25040 - Sewage Plant Operator	38.85
25070 - Stationary Engineer	47.33
25190 - Ventilation Equipment Tender	34.60
25210 - Water Treatment Plant Operator	38.85
27000 - Protective Service Occupations	
27004 - Alarm Monitor	31.63
27007 - Baggage Inspector	15.72
27008 - Corrections Officer	44.13
27010 - Court Security Officer	44.13
27030 - Detection Dog Handler	25.35
27040 - Detention Officer	44.13
27070 - Firefighter	44.13
27101 - Guard I	15.72
27102 - Guard II	25.35
27131 - Police Officer I	49.33
27132 - Police Officer II	54.83
28000 - Recreation Occupations	
28041 - Carnival Equipment Operator	17.45
28042 - Carnival Equipment Repairer	18.88
28043 - Carnival Worker	13.08
28210 - Gate Attendant/Gate Tender	21.94
28310 - Lifeguard	14.56
28350 - Park Attendant (Aide)	24.54
28510 - Recreation Aide/Health Facility Attendant	17.91
28515 - Recreation Specialist	30.40
28630 - Sports Official	19.54
28690 - Swimming Pool Operator	22.07
29000 - Stevedoring/Longshoremen Occupational Services	
29010 - Blocker And Bracer	35.21
29020 - Hatch Tender	35.21
29030 - Line Handler	35.21
29041 - Stevedore I	33.18
29042 - Stevedore II	37.21
30000 - Technical Occupations	
30010 - Air Traffic Control Specialist, Center (HFO) (see 3)	46.05
30011 - Air Traffic Control Specialist, Station (HFO) (see 3)	31.75
30012 - Air Traffic Control Specialist, Terminal (HFO) (see 3)	34.98
30021 - Archeological Technician I	24.86
30022 - Archeological Technician II	27.80
30023 - Archeological Technician III	34.44
30030 - Cartographic Technician	34.44
30040 - Civil Engineering Technician	34.84
30051 - Cryogenic Technician I	32.83
30052 - Cryogenic Technician II	36.26
30061 - Drafter/CAD Operator I	24.86
30062 - Drafter/CAD Operator II	27.80
30063 - Drafter/CAD Operator III	30.99
30064 - Drafter/CAD Operator IV	38.15
30081 - Engineering Technician I	18.90
30082 - Engineering Technician II	21.22
30083 - Engineering Technician III	23.73
30084 - Engineering Technician IV	29.40
30085 - Engineering Technician V	35.98
30086 - Engineering Technician VI	43.51
30090 - Environmental Technician	31.23
30095 - Evidence Control Specialist	29.65
30210 - Laboratory Technician	25.55
30221 - Latent Fingerprint Technician I	39.40
30222 - Latent Fingerprint Technician II	43.52
30240 - Mathematical Technician	35.89

30361	- Paralegal /Legal Assistant I	23.52
30362	- Paralegal /Legal Assistant II	29.13
30363	- Paralegal /Legal Assistant III	35.65
30364	- Paralegal /Legal Assistant IV	43.11
30375	- Petroleum Supply Specialist	36.26
30390	- Photo-Optics Technician	35.89
30395	- Radiation Control Technician	36.26
30461	- Technical Writer I	29.33
30462	- Technical Writer II	35.87
30463	- Technical Writer III	43.40
30491	- Unexploded Ordnance (UXO) Technician I	29.27
30492	- Unexploded Ordnance (UXO) Technician II	35.41
30493	- Unexploded Ordnance (UXO) Technician III	42.44
30494	- Unexploded (UXO) Safety Escort	29.27
30495	- Unexploded (UXO) Sweep Personnel	29.27
30501	- Weather Forecaster I	35.81
30502	- Weather Forecaster II	43.55
30620	- Weather Observer, Combined Upper Air Or	(see 3) 30.99
Surface Programs		
30621	- Weather Observer, Senior	(see 3) 32.89
31000	- Transportation/Mobile Equipment Operation Occupations	
31010	- Airplane Pilot	35.41
31020	- Bus Aide	16.27
31030	- Bus Driver	22.62
31043	- Driver Courier	17.77
31260	- Parking and Lot Attendant	14.50
31290	- Shuttle Bus Driver	19.22
31310	- Taxi Driver	16.98
31361	- Truckdriver, Light	19.22
31362	- Truckdriver, Medium	20.64
31363	- Truckdriver, Heavy	24.77
31364	- Truckdriver, Tractor-Trailer	24.77
99000	- Miscellaneous Occupations	
99020	- Cabin Safety Specialist	17.27
99030	- Cashier	13.32
99050	- Desk Clerk	18.65
99095	- Embalmer	29.47
99130	- Flight Follower	29.27
99251	- Laboratory Animal Caretaker I	16.43
99252	- Laboratory Animal Caretaker II	17.77
99260	- Marketing Analyst	41.74
99310	- Mortician	29.47
99410	- Pest Controller	24.35
99510	- Photofinishing Worker	17.70
99710	- Recycling Laborer	29.19
99711	- Recycling Specialist	34.68
99730	- Refuse Collector	26.27
99810	- Sales Clerk	15.51
99820	- School Crossing Guard	17.56
99830	- Survey Party Chief	54.14
99831	- Surveying Aide	31.30
99832	- Surveying Technician	36.92
99840	- Vending Machine Attendant	15.59
99841	- Vending Machine Repairer	18.24
99842	- Vending Machine Repairer Helper	15.59

Note: Executive Order (EO) 13706, Establishing Paid Sick Leave for Federal Contractors, applies to all contracts subject to the Service Contract Act for which the contract is awarded (and any solicitation was issued) on or after January 1, 2017. If this contract is covered by the EO, the contractor must provide employees

201556379.txt

with 1 hour of paid sick leave for every 30 hours they work, up to 56 hours of paid sick leave each year. Employees must be permitted to use paid sick leave for their own illness, injury or other health-related needs, including preventive care; to assist a family member (or person who is like family to the employee) who is ill, injured, or has other health-related needs, including preventive care; or for reasons resulting from, or to assist a family member (or person who is like family to the employee) who is the victim of, domestic violence, sexual assault, or stalking. Additional information on contractor requirements and worker protections under the EO is available at www.dol.gov/whd/govcontracts.

ALL OCCUPATIONS LISTED ABOVE RECEIVE THE FOLLOWING BENEFITS:

HEALTH & WELFARE: \$4.41 per hour or \$176.40 per week or \$764.40 per month

HEALTH & WELFARE EO 13706: \$4.13 per hour, or \$165.20 per week, or \$715.87 per month*

*This rate is to be used only when compensating employees for performance on an SCA-covered contract also covered by EO 13706, Establishing Paid Sick Leave for Federal Contractors. A contractor may not receive credit toward its SCA obligations for any paid sick leave provided pursuant to EO 13706.

VACATION: 2 weeks paid vacation after 1 year of service with a contractor or successor; 3 weeks after 5 years, and 4 weeks after 12 years. Length of service includes the whole span of continuous service with the present contractor or successor, wherever employed, and with the predecessor contractors in the performance of similar work at the same Federal facility. (Reg. 29 CFR 4.173)

HOLIDAYS: A minimum of ten paid holidays per year: New Year's Day, Martin Luther King Jr.'s Birthday, Washington's Birthday, Memorial Day, Independence Day, Labor Day, Columbus Day, Veterans' Day, Thanksgiving Day, and Christmas Day. (A contractor may substitute for any of the named holidays another day off with pay in accordance with a plan communicated to the employees involved.) (See 29 CFR 4.174)

THE OCCUPATIONS WHICH HAVE NUMBERED FOOTNOTES IN PARENTHESES RECEIVE THE FOLLOWING:

1) JANITOR: The rate listed on this WD for the "Janitor" occupation applies only to Marin and San Mateo counties. Please refer to WD 1974-1257 to obtain the wage rate and fringe benefits applicable to the "Janitor" occupation in San Francisco County.

2) COMPUTER EMPLOYEES: Under the SCA at section 8(b), this wage determination does not apply to any employee who individually qualifies as a bona fide executive, administrative, or professional employee as defined in 29 C.F.R. Part 541. Because most Computer System Analysts and Computer Programmers who are compensated at a rate not less than \$27.63 (or on a salary or fee basis at a rate not less than \$455 per week) an hour would likely qualify as exempt computer professionals, (29 C.F.R. 541.400) wage rates may not be listed on this wage determination for all occupations within those job families. In addition, because this wage determination may not list a wage rate for some or all occupations within those job families if the survey

data indicates that the prevailing wage rate for the occupation equals or exceeds \$27.63 per hour conformances may be necessary for certain nonexempt employees. For example, if an individual employee is nonexempt but nevertheless performs duties within the scope of one of the Computer Systems Analyst or Computer Programmer occupations for which this wage determination does not specify an SCA wage rate, then the wage rate for that employee must be conformed in accordance with the conformance procedures described in the conformance note included on this wage

determination.

Additionally, because job titles vary widely and change quickly in the computer industry, job titles are not determinative of the application of the computer professional exemption. Therefore, the exemption applies only to computer employees who satisfy the compensation requirements and whose primary duty consists of:

(1) The application of systems analysis techniques and procedures, including consulting with users, to determine hardware, software or system functional specifications;

(2) The design, development, documentation, analysis, creation, testing or modification of computer systems or programs, including prototypes, based on and related to user or system design specifications;

(3) The design, documentation, testing, creation or modification of computer programs related to machine operating systems; or

(4) A combination of the aforementioned duties, the performance of which requires the same level of skills. (29 C.F.R. 541.400).

3) AIR TRAFFIC CONTROLLERS AND WEATHER OBSERVERS - NIGHT PAY & SUNDAY PAY: If you work at night as part of a regular tour of duty, you will earn a night differential and receive an additional 10% of basic pay for any hours worked between 6pm and 6am.

If you are a full-time employed (40 hours a week) and Sunday is part of your regularly scheduled workweek, you are paid at your rate of basic pay plus a Sunday premium of 25% of your basic rate for each hour of Sunday work which is not overtime

(i.e. occasional work on Sunday outside the normal tour of duty is considered overtime work).

**** HAZARDOUS PAY DIFFERENTIAL ****

An 8 percent differential is applicable to employees employed in a position that represents a high degree of hazard when working with or in close proximity to ordnance, explosives, and incendiary materials. This includes work such as screening, blending, dyeing, mixing, and pressing of sensitive ordnance, explosives, and pyrotechnic compositions such as lead azide, black powder and photoflash powder.

All dry-house activities involving propellants or explosives. Demilitarization, modification, renovation, demolition, and maintenance operations on sensitive ordnance, explosives and incendiary materials. All operations involving re-grading and cleaning of artillery ranges.

A 4 percent differential is applicable to employees employed in a position that represents a low degree of hazard when working with, or in close proximity to ordnance, (or employees possibly adjacent to) explosives and incendiary materials which involves potential injury such as laceration of hands, face, or arms of the employee engaged in the operation, irritation of the skin, minor burns and the like;

minimal damage to immediate or adjacent work area or equipment being used. All operations involving unloading, storage, and hauling of ordnance, explosive, and incendiary ordnance material other than small arms ammunition. These differentials are only applicable to work that has been specifically designated by the agency for ordnance, explosives, and incendiary material differential pay.

**** UNIFORM ALLOWANCE ****

If employees are required to wear uniforms in the performance of this contract

(either by the terms of the Government contract, by the employer, by the state or local law, etc.), the cost of furnishing such uniforms and maintaining (by laundering or dry cleaning) such uniforms is an expense that may not be borne by an employee where such cost reduces the hourly rate below that required by the wage determination. The Department of Labor will accept payment in accordance with the following standards as compliance:

The contractor or subcontractor is required to furnish all employees with an adequate number of uniforms without cost or to reimburse employees for the actual cost of the uniforms. In addition, where uniform cleaning and maintenance is made the responsibility of the employee, all contractors and subcontractors subject to this wage determination shall (in the absence of a bona fide collective bargaining agreement providing for a different amount, or the furnishing of contrary affirmative proof as to the actual cost), reimburse all employees for such cleaning and maintenance at a rate of \$3.35 per week (or \$.67 cents per day). However, in those instances where the uniforms furnished are made of "wash and wear" materials, may be routinely washed and dried with other personal garments, and do not require any special treatment such as dry cleaning, daily washing, or commercial laundering in order to meet the cleanliness or appearance standards set by the terms of the Government contract, by the contractor, by law, or by the nature of the work, there is no requirement that employees be reimbursed for uniform maintenance costs.

** SERVICE CONTRACT ACT DIRECTORY OF OCCUPATIONS **

The duties of employees under job titles listed are those described in the "Service Contract Act Directory of Occupations", Fifth Edition (Revision 1), dated September 2015, unless otherwise indicated.

** REQUEST FOR AUTHORIZATION OF ADDITIONAL CLASSIFICATION AND WAGE RATE, Standard Form 1444 (SF-1444) **

Conformance Process:

The contracting officer shall require that any class of service employee which is not listed herein and which is to be employed under the contract (i.e., the work to be performed is not performed by any classification listed in the wage determination), be classified by the contractor so as to provide a reasonable relationship (i.e., appropriate level of skill comparison) between such unlisted classifications and the classifications listed in the wage determination (See 29 CFR

4.6(b)(2)(i)). Such conforming procedures shall be initiated by the contractor prior to the performance of contract work by such unlisted class(es) of employees (See 29 CFR 4.6(b)(2)(ii)). The Wage and Hour Division shall make a final determination of conformed classification, wage rate, and/or fringe benefits which shall be paid to all employees performing in the classification from the first day of work on which contract work is performed by them in the classification. Failure to pay such unlisted employees the compensation agreed upon by the interested parties and/or fully determined by the Wage and Hour Division retroactive to the date such class of employees commenced contract work shall be a violation of the Act and this contract. (See 29 CFR 4.6(b)(2)(v)). When multiple wage determinations are included in a contract, a separate SF-1444 should be prepared for each wage determination to which a class(es) is to be conformed.

The process for preparing a conformance request is as follows:

- 1) When preparing the bid, the contractor identifies the need for a conformed

occupation(s) and computes a proposed rate(s).

2) After contract award, the contractor prepares a written report listing in order the proposed classification title(s), a Federal grade equivalency (FGE) for each proposed classification(s), job description(s), and rationale for proposed wage rate(s), including information regarding the agreement or disagreement of the authorized representative of the employees involved, or where there is no authorized representative, the employees themselves. This report should be submitted to the contracting officer no later than 30 days after such unlisted class(es) of employees performs any contract work.

3) The contracting officer reviews the proposed action and promptly submits a report of the action, together with the agency's recommendations and pertinent information including the position of the contractor and the employees, to the U.S. Department of Labor, Wage and Hour Division, for review (See 29 CFR 4.6(b)(2)(ii)).

4) Within 30 days of receipt, the Wage and Hour Division approves, modifies, or disapproves the action via transmittal to the agency contracting officer, or notifies the contracting officer that additional time will be required to process the request.

5) The contracting officer transmits the Wage and Hour Division's decision to the contractor.

6) Each affected employee shall be furnished by the contractor with a written copy of such determination or it shall be posted as a part of the wage determination (See 29 CFR 4.6(b)(2)(iii)).

Information required by the Regulations must be submitted on SF-1444 or bond paper.

When preparing a conformance request, the "Service Contract Act Directory of Occupations" should be used to compare job definitions to ensure that duties requested are not performed by a classification already listed in the wage determination. Remember, it is not the job title, but the required tasks that determine whether a class is included in an established wage determination. Conformances may not be used to artificially split, combine, or subdivide classifications listed in the wage determination (See 29 CFR 4.152(c)(1)).

REGISTER OF WAGE DETERMINATIONS UNDER
THE SERVICE CONTRACT ACT
By direction of the Secretary of Labor

U. S. DEPARTMENT OF LABOR
EMPLOYMENT STANDARDS ADMINISTRATION
WAGE AND HOUR DIVISION
WASHINGTON D. C. 20210

Daniel W. Simms
Director

Division of
Wage Determinations

Wage Determination No.: 2018-0074
Revision No.: 1
Date Of Last Revision: 05/17/2018

Note: Under Executive Order (EO) 13658, an hourly minimum wage of \$10.35 for calendar year 2018 applies to all contracts subject to the Service Contract Act for which the contract is awarded (and any solicitation was issued) on or after January 1, 2015. If this contract is covered by the EO, the contractor must pay all workers in any classification listed on this wage determination at least \$10.35 per hour (or the applicable wage rate listed on this wage determination, if it is higher) for all hours spent performing on the contract in calendar year 2018. The EO minimum wage rate will be adjusted annually. Additional information on contractor requirements and worker protections under the EO is available at www.dol.gov/whd/govcontracts

State: California

Area: California County of San Francisco

****Fringe Benefits Required Follow the Occupational Listing****

Employed on the National Park Service contract to provide passenger ferry transportation services to Alcatraz

OCCUPATION CODE - TITLE	FOOTNOTE	RATE
(not set) - Master	(see 1)	42.62
(not set) - Assistant Engineer	(see 1)	29.25
(not set) - Journeyman (Engineer)	(see 1)	30.40
(not set) - Engineer I	(see 1)	35.86
(not set) - Engineer II	(see 1)	39.23
(not set) - Senior Engineer	(see 1)	42.62
(not set) - Port Engineer	(see 1)	47.78
(not set) - Deckhand	(see 2)	30.34
(not set) - Senior Deckhand	(see 2)	30.95

Note: Executive Order (EO) 13706, Establishing Paid Sick Leave for Federal Contractors, applies to all contracts subject to the Service Contract Act for which the contract is awarded (and any solicitation was issued) on or after January 1, 2017. If this contract is covered by the EO, the contractor must provide employees with 1 hour of paid sick leave for every 30 hours they work, up to 56 hours of paid sick leave each year. Employees must be permitted to use paid sick leave for their own illness, injury or other health-related needs, including preventive care; to assist a family member (or person who is like family to the employee) who is ill, injured, or has other health-related needs, including preventive care; or for reasons resulting from, or to assist a family member (or person who is like family to the employee) who is the victim of, domestic violence, sexual assault, or stalking. Additional information on contractor requirements and worker protections under the EO is available at www.dol.gov/whd/govcontracts.

THE OCCUPATIONS WHICH HAVE NUMBERED FOOTNOTES IN PARENTHESES RECEIVE THE FOLLOWING:

1) Health and Welfare: \$1,550 per month

Sick Leave: 8 days after 1 year; thereafter accrues 8 hours per month

Vacation: 2 weeks after 1 year; 3 weeks after 5 years; 4 weeks after 10 years; 5 weeks after 20 years (See 29 C.F.R. 4.173)

Pension: Master/Senior Engineer/ Port Engineer- \$507.00 per month

Engineer I/Engineer II - \$496.00 per month

Journeyman/ Assistant Engineer- \$476.00 per month

Holidays: A minimum of ten paid holidays per year: New Year's Day, Martin Luther King Jr.'s Birthday, Memorial Day, Independence Day, Labor Day, President's Day, Thanksgiving Day, Day after Thanksgiving and December 24th, Christmas Day. (A contractor may substitute for any of the named holidays another day off with pay in accordance with a plan communicated to the employees involved.) (See 29 C.F.R. 4.174)

2) Health and Welfare: \$1,394.00 per month (Trust Plan or equivalent);

\$1,689.00 per month (Kaiser Plan or equivalent)

Pension: \$524.00 per month

Vacation: 2 weeks after 1 year; 3 weeks after 5 years; 4 weeks after 10 years; 5 weeks after 20 years (See 29 C.F.R. 4.173)

Holiday: A minimum of ten paid holidays per year: New Year's Day, Martin Luther King Jr.'s Birthday, Memorial Day, Independence Day, Labor Day, President's Day, Thanksgiving Day, Day after Thanksgiving and December 24th, Christmas Day. (A contractor may substitute for any of the named holidays another day off with pay in accordance with a plan communicated to the employees involved.) (See 29 C.F.R. 4.174)

Sick Leave: 8 hours per month

** OCCUPATIONS NOT INCLUDED IN THE SCA DIRECTORY OF OCCUPATIONS **

Assistant Engineer

No Job Description

Deckhand

Performs customer relations and also acts as a liaison between the Customers, Captain, and the Employers as directed. Deckhands will be required to sell and collect tickets on all vessels during Ferry runs whenever operationally appropriate.

Assist in counting of passenger's on and off the vessel. Deckhands may be required to assist in the engine room and to assist with fueling operations. Perform sanitary and normal maintenance work while the vessel is underway to insure the safety of the passengers, crew and vessel.

Engineer I

(No Job Description)

Engineer II

(No Job Description)

Journeyman (Engineer)

(No Job Description)

Master

(No Job Description)

Port Engineer

(No Job Description)

Senior Deckhand

Perform all the duties of the Deckhand and complete the Senior Deckhand training.

Senior Engineer

(No Job Description)