

Analysis of Cost Effective Strategies for Housing the Homeless

Spotlight on CSH's Social Innovation Fund Initiative in San Francisco

*Wednesday, April 30, 2014
City and County of San Francisco
Budget and Finance Sub-Committee*

Steven Shum, Senior Program Manager, CSH

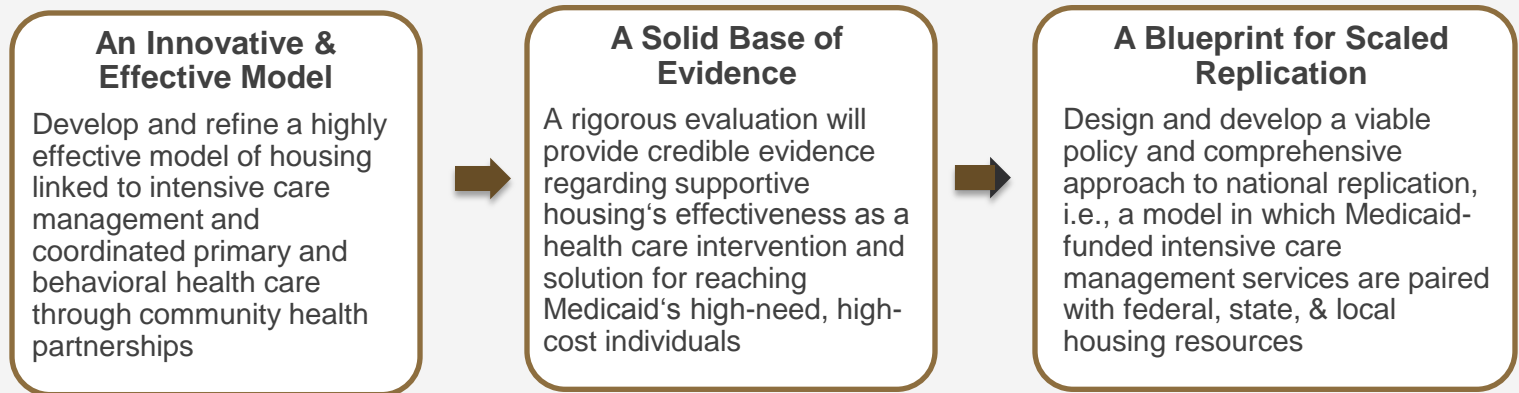


CSH Social Innovation Fund

GOAL: National replication of integrated supportive housing and health services model as a viable alternative to the tragic and costly “revolving door” for homeless men and women who are frequent users of crisis health care services

FUNDING: \$1.15 M annual award from Corporation for National and Community Service (CNCS) for 5 yrs
\$425,000 annual award to Tenderloin Neighborhood Development Corporation for 5 yrs

STRATEGIES:



SITES:

SAN FRANCISCO, CA

TENDERLOIN
NEIGHBORHOOD
DEVELOPMENT CORP.

LOS ANGELES, CA

THE ECONOMIC
ROUNDTABLE

HARTFORD, CT

CONNECTICUT AIDS
RESOURCE
CORPORATION

ANN ARBOR, MI

CATHOLIC SOCIAL
SERVICES OF
WASHTENAW COUNTY

Kelly Cullen Community (San Francisco, CA)

CSH's Partnership with TNDC & DPH

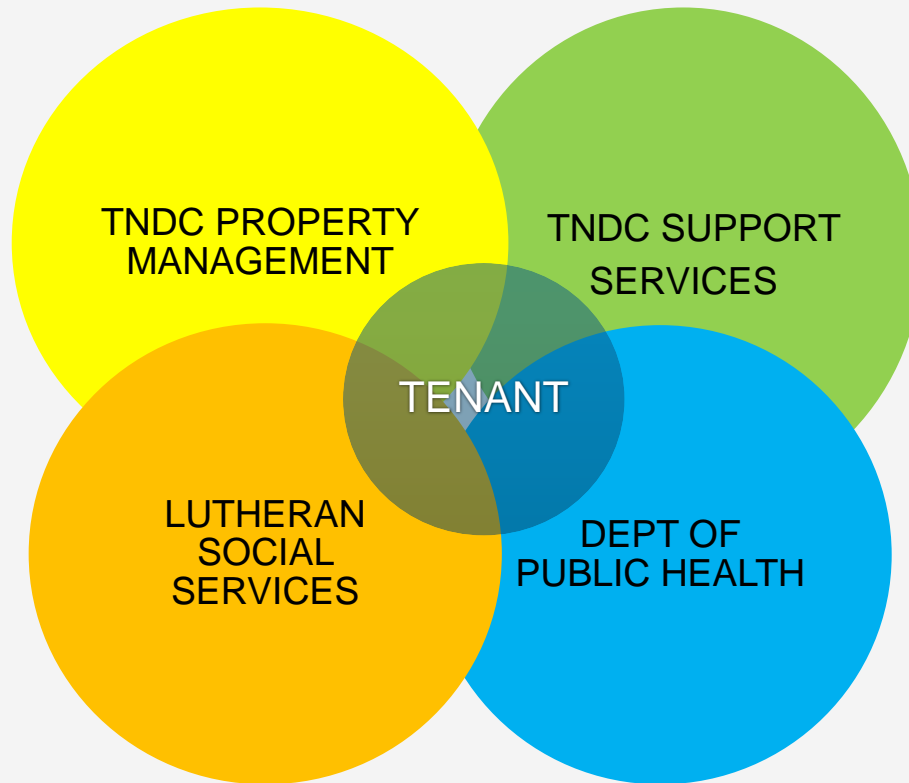


KCC Overview



- **Partnership with Tenderloin Neighborhood Development Corporation & Department of Public Health Direct Access to Housing**
- **Home to 172 formerly homeless individuals, 50 referred from San Francisco Health Plan and 122 referred from DPH Direct Access to Housing**
- **Available ground floor health services with Tom Waddell Urban Health Clinic**

KCC On-Site Team



Emerging Evidence of Supportive Housing as a Platform for Healthy Futures

Studies from Denver, Seattle, Connecticut and Maine documenting Supportive Housing's ability to impact the highest costs:

- 15% reduced substance use
- 24% - 34% fewer emergency room visits
- 27% to 29% fewer inpatient admissions and hospital days
- Decreases up to 87% in use of detox services and decreases in psychiatric admissions
- **41% to 67% decrease in Medicaid costs**



Total Public Cost Avoidance for Los Angeles Initiative

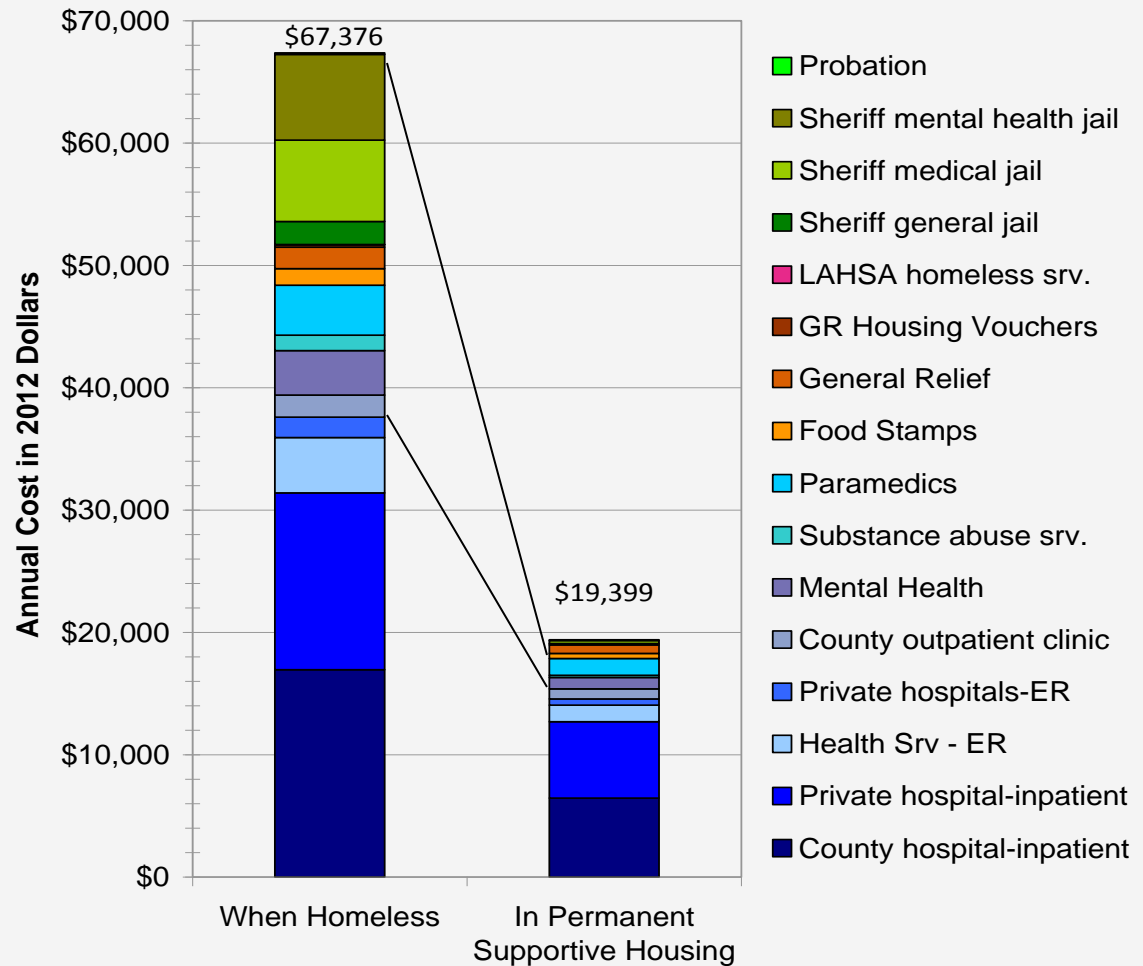
\$47,977 in estimated annual public costs avoided by housing 10th decile patients

Estimated annual public cost for 10th decile patients/SH tenants in evaluation, using propensity scoring:
n = 89

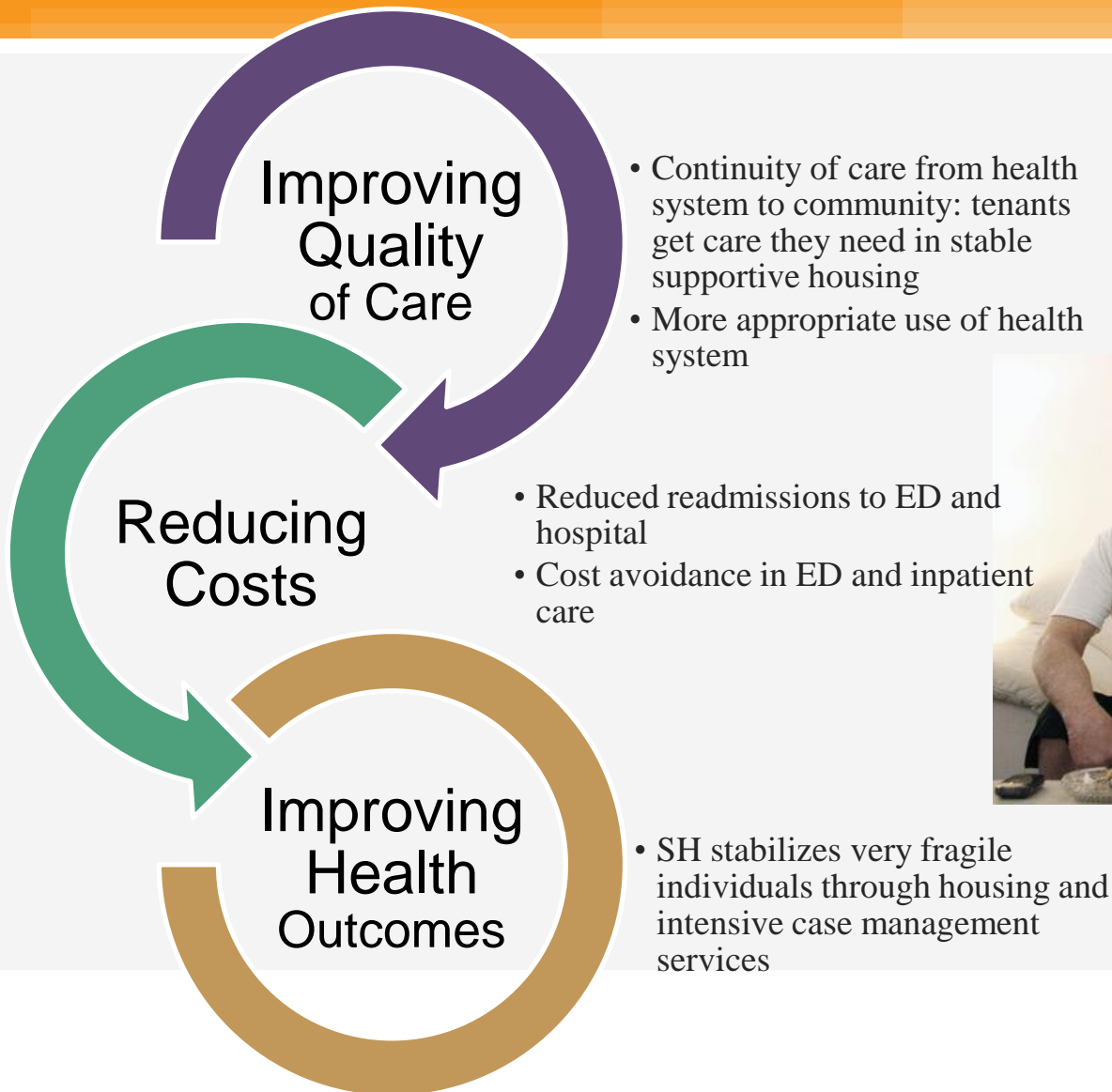
\$67,376 when homeless

\$19,399 when in SH

Navigation and housing costs not included



Triple Aim alignment



For more information please contact:

Steven Shum, Senior Program Manager,
CSH
369 Pine Street, Suite 350
San Francisco, CA 94104
510-318-2267
steven.shum@csh.org

