



DEPARTMENT OF
HOMELESSNESS AND
SUPPORTIVE HOUSING

Tenderloin Housing Clinic: Master Lease Hotels Grant Agreement 3rd Amendment

Budget and Finance Committee | May 27, 2026



Proposed Amendment Details

- **Resolution:** Approve the **3rd amendment** to the grant agreement between HSH and **Tenderloin Housing Clinic** for **16 master-leased permanent supportive housing sites**.
- **Term:**
 - Current Term: July 1, 2020 – June 30, 2026
 - Amended Term: **July 1, 2020 – December 31, 2027**
- **Amount:** Increases not-to-exceed amount by **\$61,951,806** for a total not-to-exceed amount of **\$303,609,319**.
- **Commission approval:** May 7, 2026

Grant Agreement Overview

- This agreement funds sixteen permanent supportive housing (PSH) sites
- Services provided by **Tenderloin Housing Clinic (THC)**:
 - Support services
 - Property management
 - Master lease stewardship
- **Support services** include case management and connections to resources including health care and benefits. Minimum of one case manager per 25 tenants.
- **Property management** staff provide 24/7 desk coverage, maintain and repair building facilities, set up and manage tenant leases, and collect tenant rent.

Program Context

- THC has provided PSH services for tenants of these sites since 1999.
- These sites support long-term client success and stability
 - The average tenancy is 6 years
 - Only 2 evictions across 16 years
- Three hotels (Edgeworth, Caldrake, and Mayfair) are designated as “step up” residences
 - Intended for tenants who have been successful in PSH and require lesser support services
 - Enables tenant independence while freeing up units for individuals who require more intensive support.

Across all hotels in Fiscal Year 2024-2025:

1,583 people served

33% Black

50% age 55+

Site Photos – All Star



Photo: All Star Kitchen



Photo: All Star Unit



Photo: All Star Exterior

Site Photos – Boyd

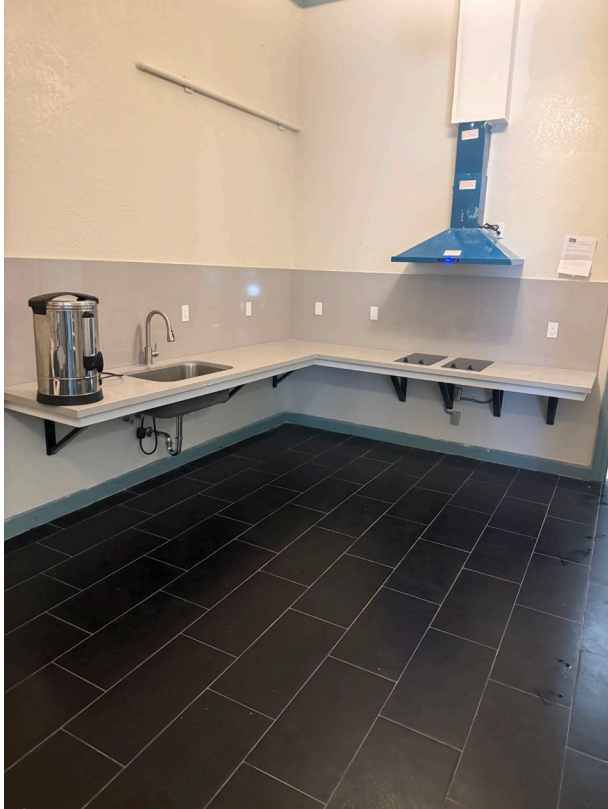


Photo: Boyd Kitchen



Photo: Boyd Unit



Photo: Boyd Exterior

Site Photos – Caldrake



Photo: Caldrake unit



Photo: Caldrake laundry

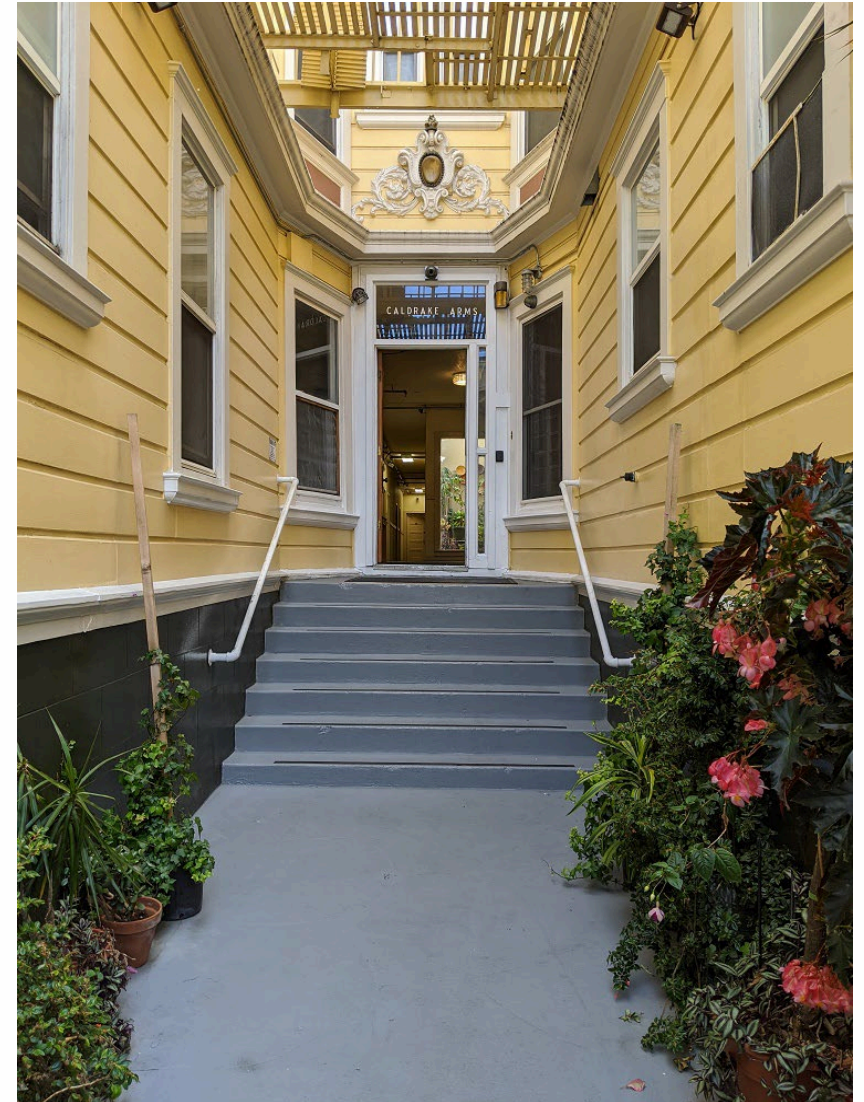


Photo: Caldrake exterior

Site Photos – Edgeworth



Photo: Edgeworth unit



Photo: Edgeworth unit

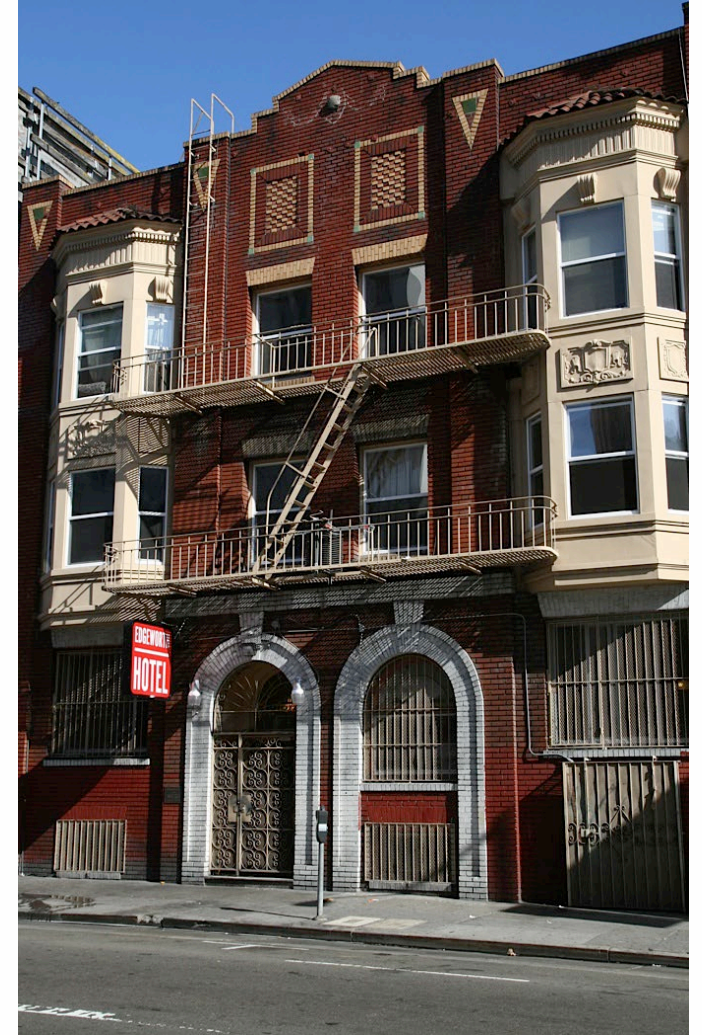


Photo: Edgeworth exterior

Site Photos – Elk



Photo: Elk lobby

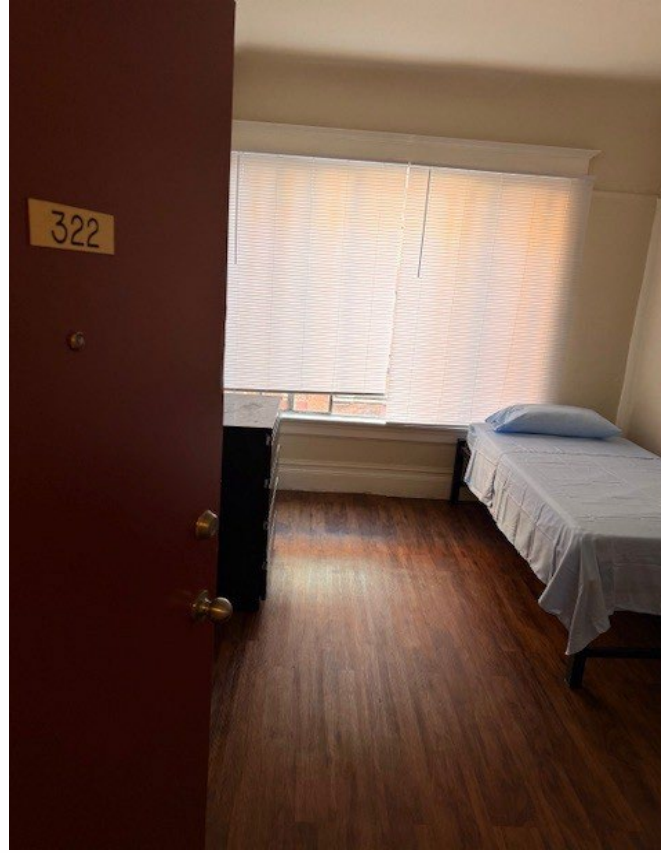


Photo: Elk unit



Photo: Elk exterior

Site Photos – Graystone



Photo: Graystone exterior



Photo: Graystone kitchen

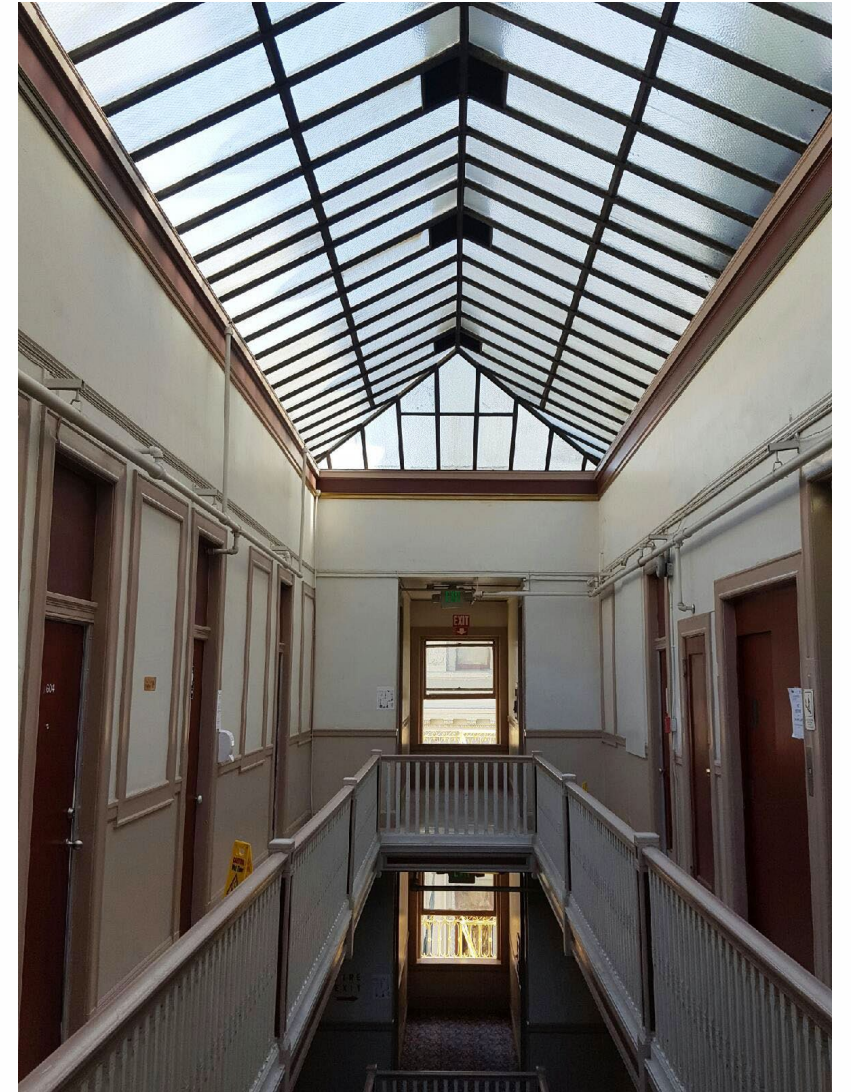


Photo: Graystone hallway

Site Photos – Hartland



Photo: Hartland unit



Photo: Hartland kitchen



Photo: Hartland exterior

Site Photos – Jefferson



Photo: Jefferson lobby



Photo: Jefferson common room

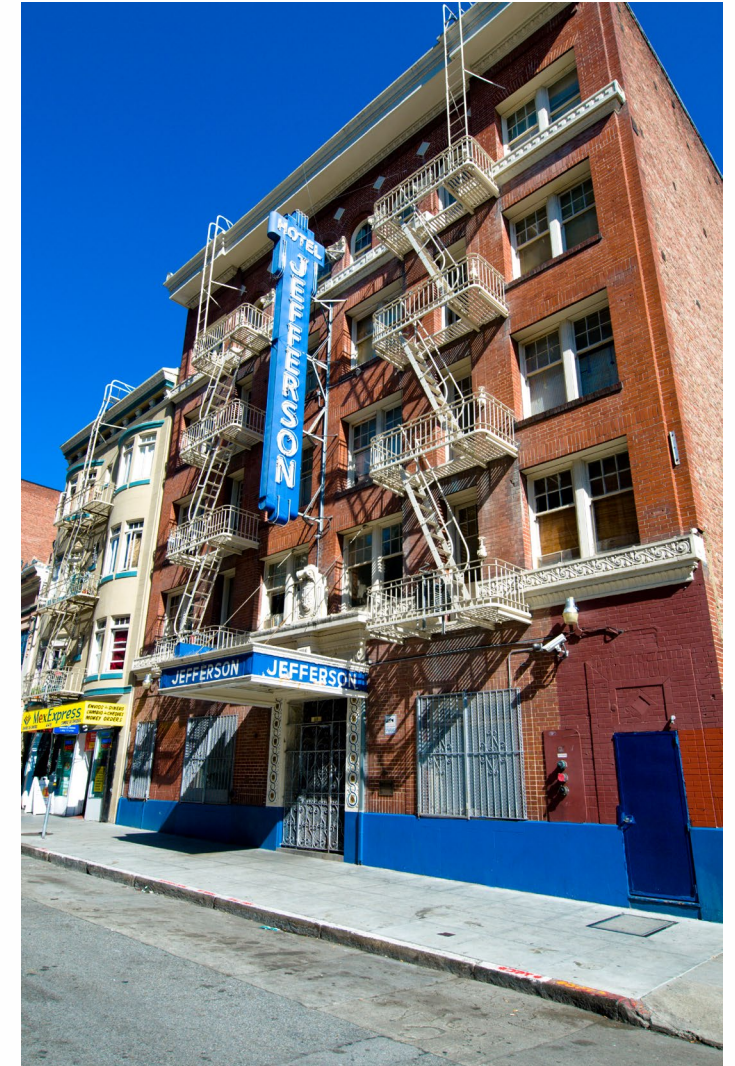


Photo: Jefferson exterior

Site Photos – Mayfair



Photo: Mayfair Kitchen



Photo: Mayfair unit



Photo: Mayfair lobby

Site Photos – Mission



Photo: Mission lobby



Photo: Mission unit



Photo: Mission exterior

Site Photos – Pierre



Photo: Pierre common room



Photo: Pierre unit



Photo: Pierre lobby

Site Photos – Raman



Photo: Raman Exterior



Photo: Raman kitchen



Photo: Raman common room

Site Photos – Royan



Photo: Royan Lobby



Photo: Royan unit



Photo: Royan common room

Site Photos – Seneca



Photo: Seneca unit



Photo: Seneca exterior



Photo: Seneca unit

Site Photos – Union



Photo: Union laundry room

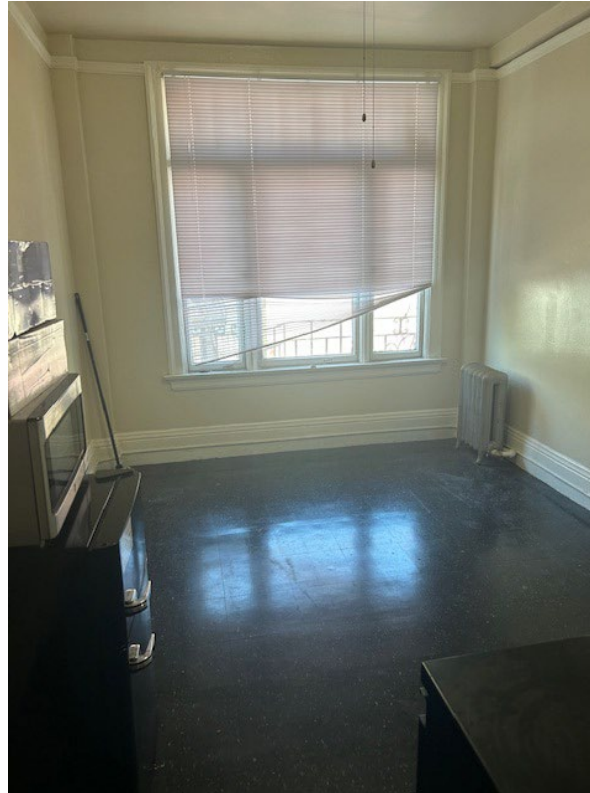


Photo: Union unit



Photo: Union exterior

Site Photos – Vincent



Photo: Vincent unit



Photo: Vincent community kitchen



Photo: Vincent exterior



DEPARTMENT OF
HOMELESSNESS AND
SUPPORTIVE HOUSING

Questions?

Thank you!