



DEPARTMENT OF  
HOMELESSNESS AND  
SUPPORTIVE HOUSING

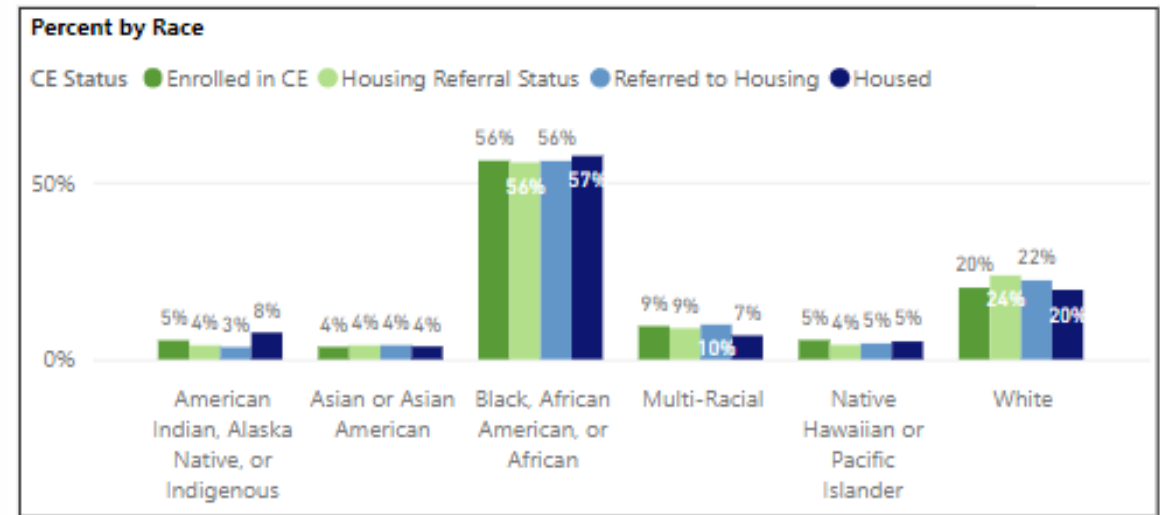
# HSH Resources for Unhoused Families

**Youth, Youth Adult, and Families Committee | Friday, January 13, 2023**



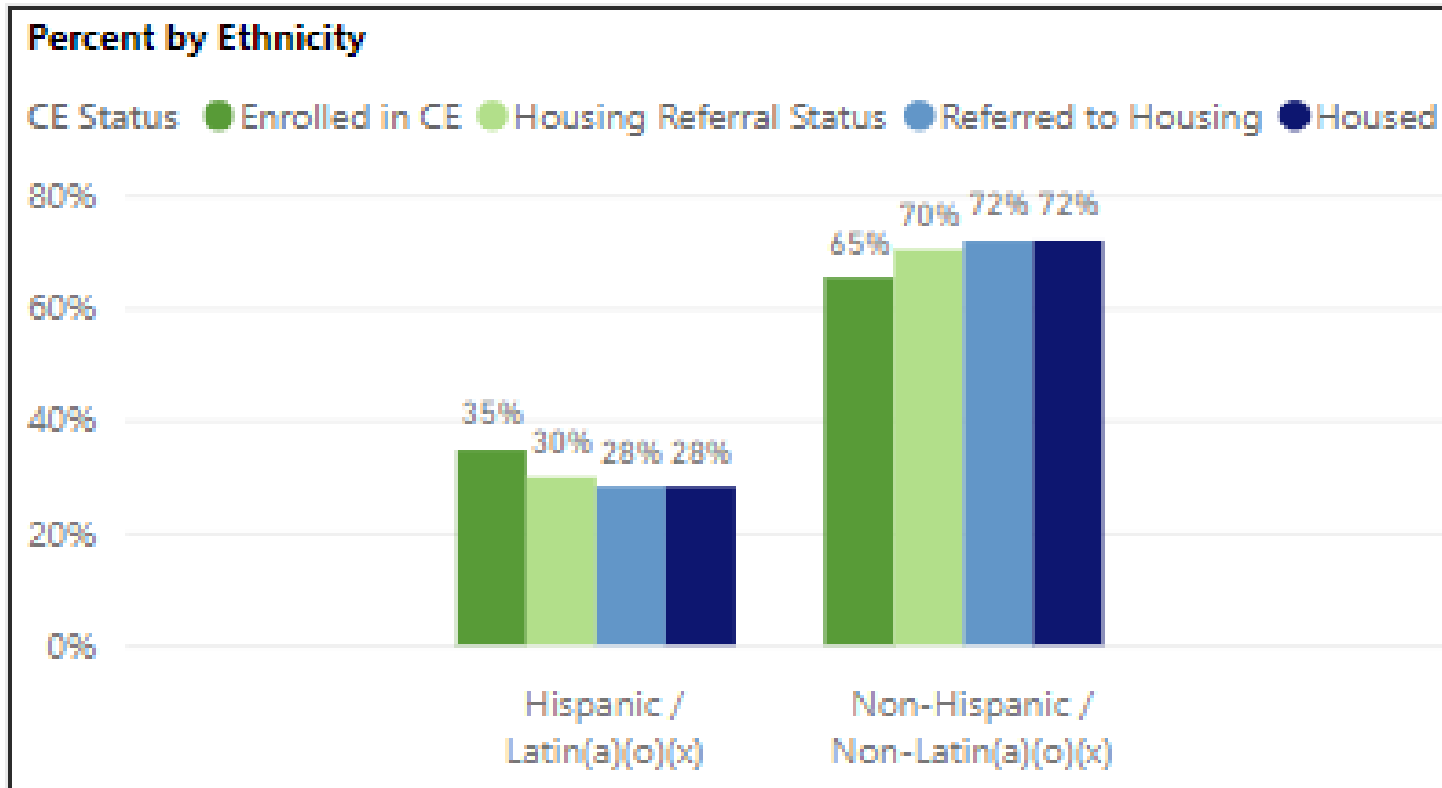
# Racial Equity & Family Homelessness

- Homelessness, including family homelessness, is the result of **structural racism**.
- Homelessness continues to disproportionately impact people of color, which is why HSH is working to **increase housing access** for BIPOC households.
  - Intentional racial equity strategy for housing resources like EHVs.
  - Expanding language and cultural competency across our system of care.
- In 2022, **80% of family households** known to Coordinated Entry were **BIPOC**.



# Equity & Family Homelessness

*Families in Coordinated Entry by Ethnicity, 2022*



Compared to the overall population of people enrolled in CE, families are more likely to:

- Be **Hispanic/Latinx**:
  - 35% of families vs. 23% overall
- Have a **female** head of household
  - 87% of families vs. 36% overall



DEPARTMENT OF  
HOMELESSNESS AND  
SUPPORTIVE HOUSING

# Family Homelessness: By the Numbers

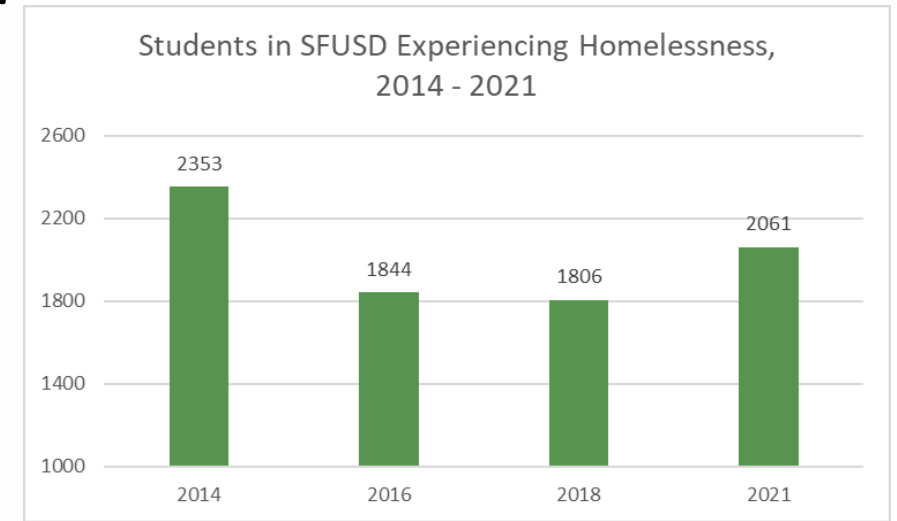
# SF Families Experiencing Homelessness

- 2022 PIT Count:

- **205 families** with **605 members** experiencing homelessness the night of Feb. 23, 2022: 87% sheltered and 13% unsheltered
- **Job loss** was most frequently cited cause of homelessness (23%)
- **Methodological change:** called families on waitlists for housing/in need of shelter to ensure they were counted in the PIT.

- 2021 SFUSD Data:

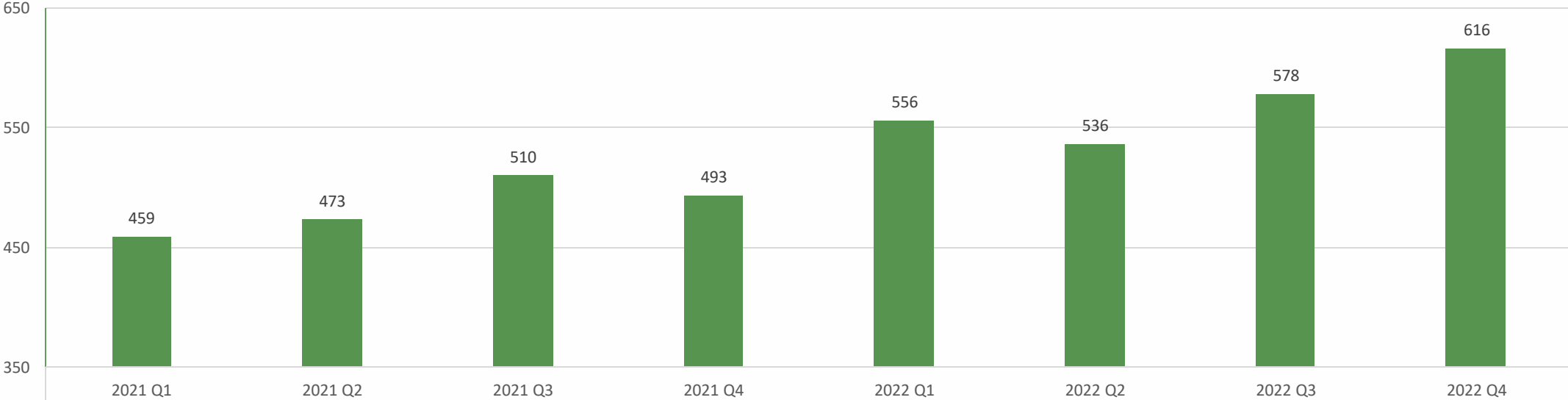
- Data included in PIT indicates **2,061 students in SFUSD** experienced homelessness in 2021 (including families living in SRO units or "doubled up")



# HSH Administrative Data

- **~1,200 families** enrolled in Coordinated Entry throughout 2022; Families make up **~10% of enrollments.**
- Recent increase in families in the Homelessness Response System

Unhoused Families Enrolled in Homelessness Response System Programs, 2021 - 2022





DEPARTMENT OF  
HOMELESSNESS AND  
SUPPORTIVE HOUSING

# HSH Resources: Families Experiencing or At-Risk of Homelessness

# Family Access Points

- **Family Access Points** serve people with minor children and pregnant people.
- **Mobile teams** are available to meet families **anywhere in the City**.

## Central City Access Point

- Compass Family Services
- 37 Grove Street

## Bayview Access Point

- Catholic Charities
- 1641 La Salle Avenue

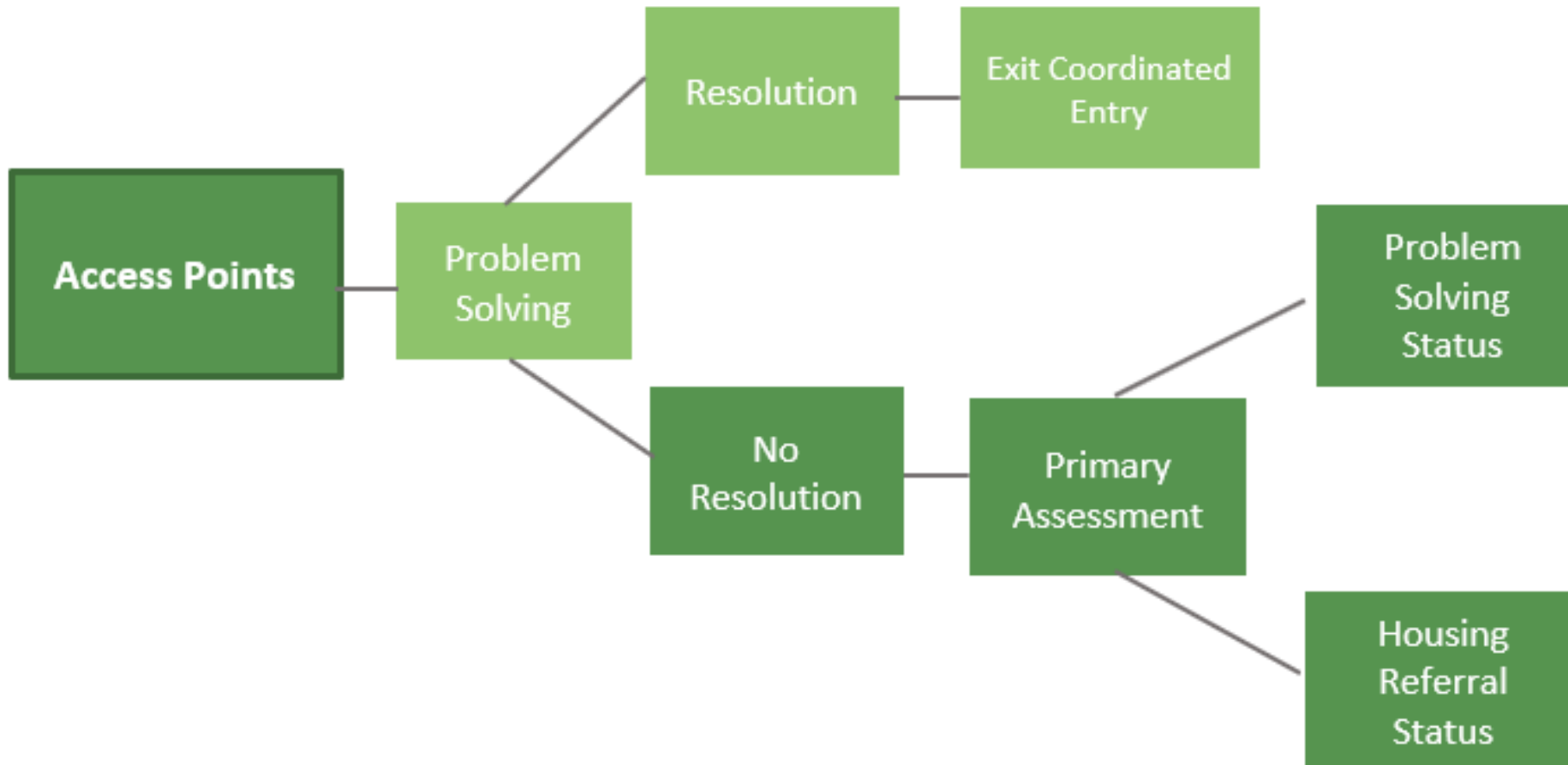
## Mission Access Point

- Catholic Charities
- 2871 Mission Street

[Get up-to-date hours and information on the HSH website.](#)



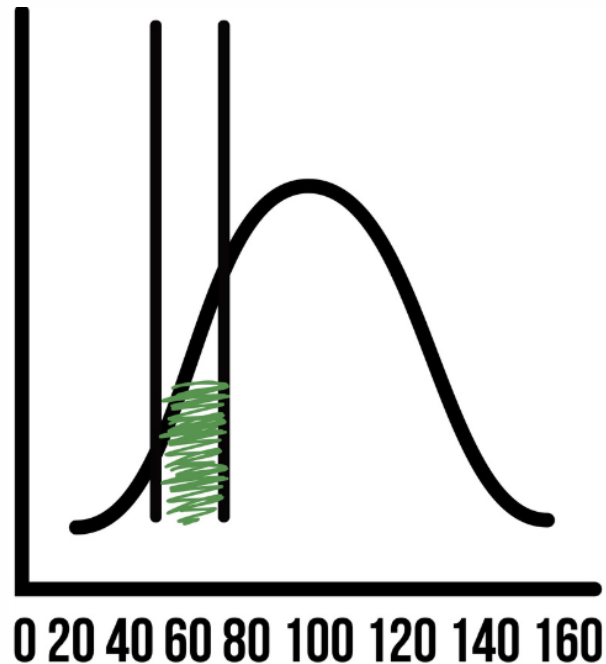
# What happens at an Access Point?



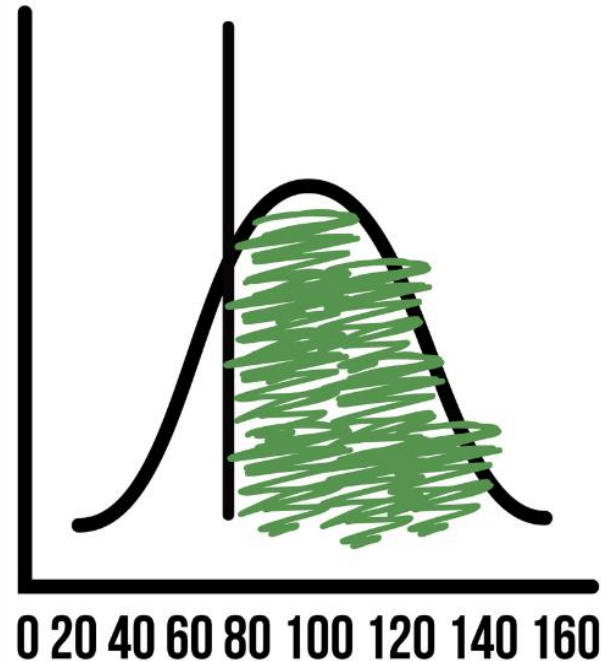
Families can access **housing** and **shelter** at **Family Access Points**.

# Fall 2022 Family Thresholds

Rapid Rehousing (RRH)



Permanent Supportive Housing (PSH)



As of Sept. 2022, HSH used the following thresholds for families and **estimate 90%** of households will be **eligible for housing**:

- **PSH: 75 – 160** (estimated 60% of households)
- **RRH: 50 – 74** (estimated 30% of households)
- **Problem Solving: 0 – 49** (estimated 10% of households)
- [Current thresholds are public on the HSH website.](#)
- **New thresholds will go into effect on January 26, 2023.**

# Coordinated Entry, Problem Solving & Prevention

## • **Coordinated Entry:**

- Coordination with providers in fall 2022 to ensure all provider staff are aware that pregnant people can choose which Coordinated Entry system (family or otherwise) to work with.

## • **Prevention:**

- Strong prevention program for families, including access to **Emergency Rental Assistance Program (ERAP)** once queue is re-opened in 2023.
- New partnership with **Mission Neighborhood Centers**, provider with **extensive language capacity** (Chinese, Russian and Spanish) for **Targeted Homelessness Prevention**.

## • **Problem Solving:**

- SOI issued in **November 2022** for a non-Access Point **Problem Solving provider** to reach community who do not normally interact with the Homelessness Response System.
- As of November 2022, **Housing Location Assistance Services** offered through Problem Solving to support households who need support navigate housing market.

# Resources for Domestic Violence Survivors

- Access Points **connect survivors to Victim Service Providers** or continue work in the Homelessness Response System depending on **client preference**.
  - **Woman, Inc. training** in November 2022 at Adult and Youth Access Points on how to refer survivors (including families) to appropriate services and DV shelter resources.
- **Safe Housing Working Group:**
  - Met monthly from April to December 2022
  - Conducted surveys, solicited input from stakeholders, and drew on quantitative analysis to identify ways to **improve survivor access to resources**.
  - Produced **system-wide recommendations** for coordination with Victim Service Providers, Access Point design, and access to shelter, housing, and diversion resources.
  - Recommendations to be presented to the Local Homeless Coordinating Board in 2023.
- Emergency Housing Vouchers: **at least 136** vouchers must be allocated to **survivors of domestic violence**.

# Supportive Housing for Families

## 🔑 Family Supportive Housing Inventory:

- ~850 units of existing family PSH
- ~625 Rapid Rehousing slots
- ~250 Emergency Housing Vouchers

## 🔑 2023 Expansions:

- 193 site-based PSH units
- ~149 Flexible Housing Subsidy Pool slots
- 70 Family Housing Ladder slots

## 🔑 New PSH sites:

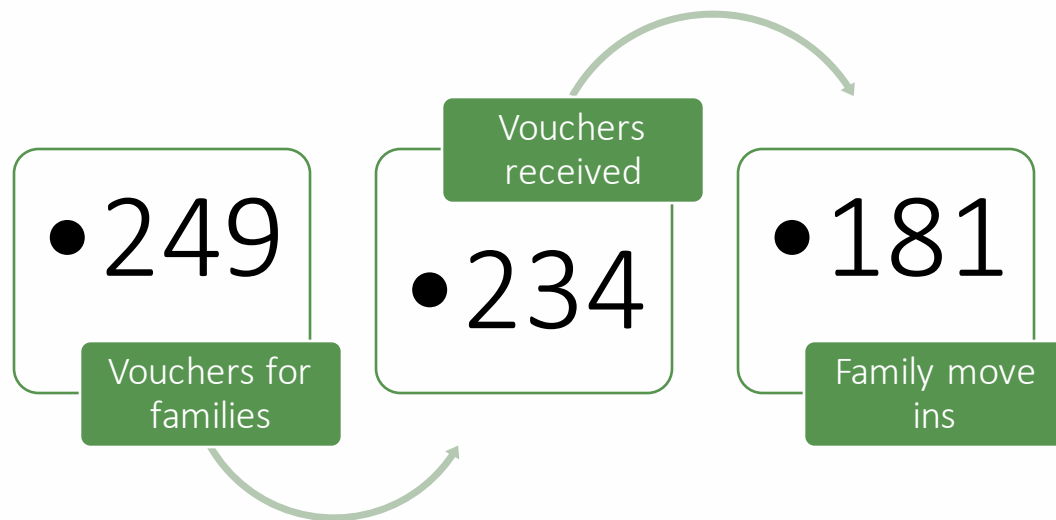
- **The Margot (1321 Mission)** - 40 units for families
  - Move-ins will be completed by February 2023.
- **681 Florida Street** - 39 units for families
  - Move-ins continuing through early 2023.
- **City Gardens (333 12th Street)** - 193 units for families
  - Lease-ups anticipated to begin in March 2023.



*City Gardens (333 12th Street)*

# Emergency Housing Vouchers for Families

## 234 families with vouchers:



• **Average household size: 3 people**

• **Living Situation/Risk Factors:**

- **29% unsheltered**
- 20% in shelter
- 51% at risk of or recently homeless

• **Head of household demographics:**

- 81% female headed households
- 94% **BIPOC**
  - 13% **Native/indigenous**
  - 47% **Black**
- 26% **Latinx**

# New Tenant-Based Programs for Families

## • **Flexible Housing Subsidy Pool** (Scattered-Site PSH):

- Local tenant-based subsidy program – tenants placed into private-market apartments that the City has identified and pay 30% of income in rent.
- First Flex Pool program for families with **~149 slots**.
- **Compass Family Services** will start the program in early 2023

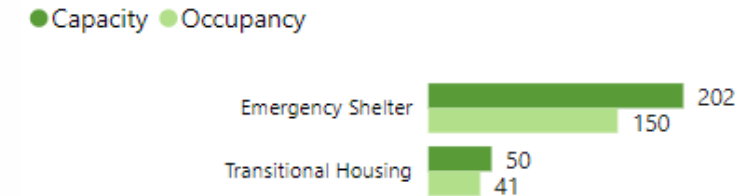
## • **Family Housing Ladder:**

- First Housing Ladder program for families launching in 2023 for **70 family households currently in PSH** who are **ready for more independent living**.
- **Compass Family Services** is the provider.
- Families live in a private-market apartment and pay 30% of income in rent.
- Services provided: housing location, housing coordination, landlord liaison services, housing-focused case management.

# HSH Family Shelter Inventory

As of January 9, 2023, there are **252 units/beds** of shelter for families across **11 sites** with **191** occupied by **459 guests**.

Capacity and occupancy by site type



## Low-Barrier Emergency Shelter for Families and Pregnant People

- **Buena Vista Horace Mann (BVHM)**: for families with students in SFUSD
  - Call program directly – 415-857-7710 (8am – 6pm) | 415-879-4316 (6:30pm – 7am)
- **Hamilton Family Congregate Pregnant People Pilot**
  - Call program directly 24/7 - (628) 250-0016



# Other Family Shelter Updates

## • Urgent Accommodation Vouchers

- Launch of UAVs for **families and pregnant people** with Compass Family Services this winter.
- **14-day placements** into scattered site temporary hotel stays, supported by roving Case Managers.
- **24/7 referral line** and strong referral partnership with **DPH Black Infant Health**.

• **Low-barrier placements** into PATH and Jelani for pregnant people.

• **March 2024** bond proposal to convert **Nextdoor** to **Family Shelter**.

# Partnership with SFUSD

## • Buena Vista Horace Mann (BVHM) Family Shelter:

- Through a joint use agreement between SFUSD and the City and County of San Francisco, BVHM provides **emergency shelter** for **SFUSD students and their families** experiencing homelessness.
- Operated by **Dolores Street Community Services** in close partnership with BVHM
- As of December 2022, site returned to pre-COVID capacity of **60 people (15 families)**.
  - Planned expansion to **69 people (19 families)** this winter.

## • Data sharing:

- Continue to **improve** data sharing practices by **cross-training staff**
- Actively working to support **real-time** data sharing



DEPARTMENT OF  
HOMELESSNESS AND  
SUPPORTIVE HOUSING

# Questions?

Thank you.