



San Francisco

Adult Probation Department

"We protect and serve the community, further justice, inspire change, and prioritize racial equity so that all people may thrive"

Cristel M. Tullock, MSW
Chief Probation Officer

GOVERNMENT AUDIT AND OVERSIGHT COMMITTEE
NOVEMBER 6, 2025

Victoria Westbrook, MA
Director, Reentry Division



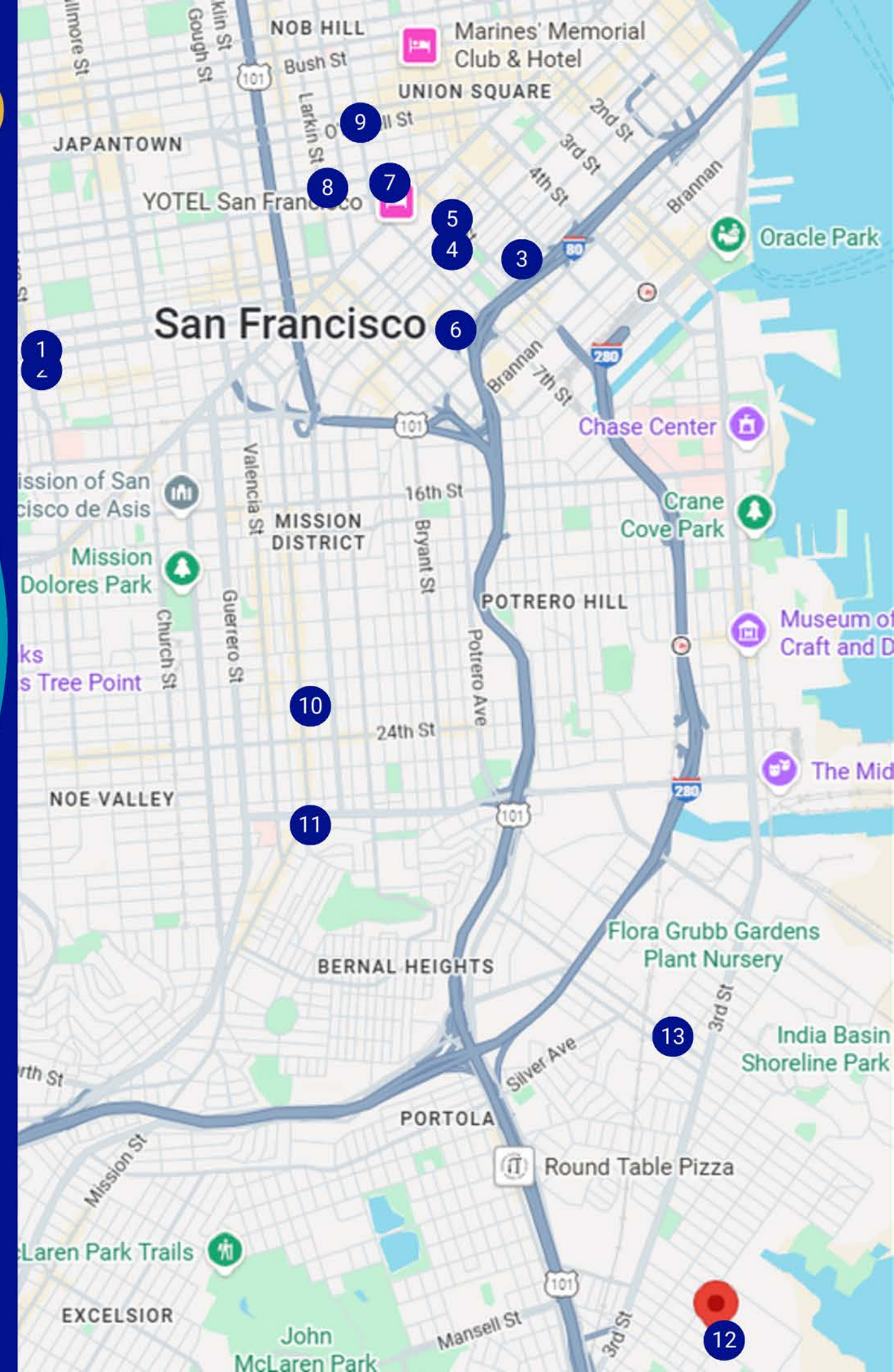
SFAPD Funded Housing Map

Housing Program Sites

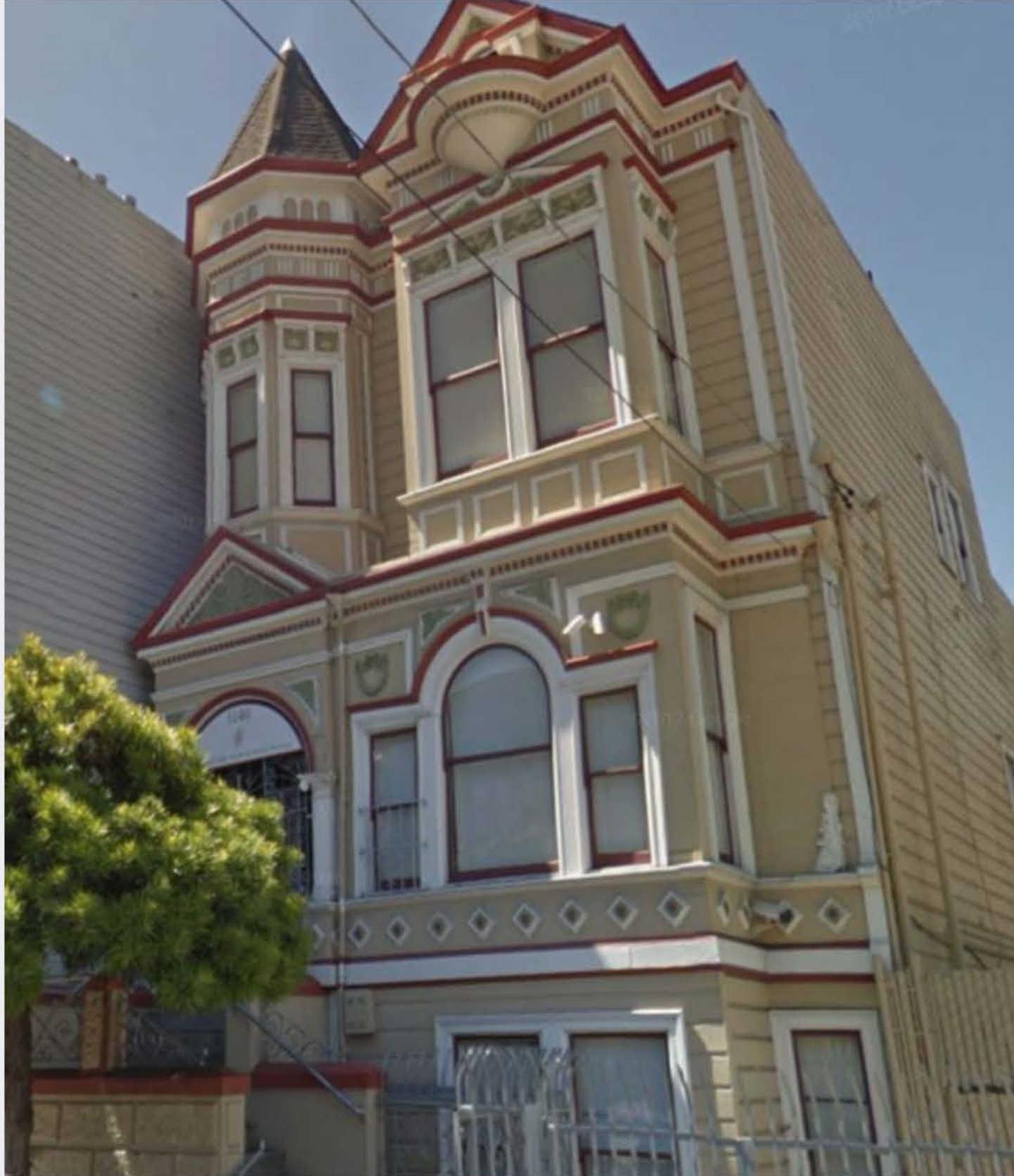
1. Our House
2. HER House
3. CW Hotel
4. Minna Project
5. Billy Holiday Center
6. HER House Expansion (WTRP)
7. The Drake – New Horizons
8. Leroy Looper Graduate Program
9. TRP Academy
10. Norma Hotel
11. Joseph McFee Center
12. Phatt Chance
13. SEOP Transitional Housing

At a Glance

380 Beds
6 Housing Partners
13 Housing Programs
Across 6 SF Districts (3, 5, 6, 8, 9, 10)



Our House



Our House is a clean and sober transitional housing program. The structured program is centered around maintaining participants' recovery, improving communication, and increasing self-sufficiency in efforts to meet permanent housing goals.

Provider: Westside Community Services

Length: 12-18 months

Eligibility: Justice involved Men

HER House Program



HER House is a structured transitional housing program for justice-involved women and children. The uniqueness of this gender responsive program stems from the multi-organization collaboration which leverages each organization's expertise in recovery, reentry, and gender-responsive, trauma-informed services. Participants will develop the skills necessary to take on challenges, overcome barriers, and become empowered to take charge of their health and wellness.

Provider: Westside Community Services, Positive directions Equals Change, Sister's Circle, and Solutions for Women

Length: 12-18 months

Eligibility: Justice involved single, pregnant, or parenting women

CW Hotel - FOF Stabilization Housing



The CW Hotel is a clean and sober transitional housing program that provides onsite case management and supportive services.

Provider: Recovery Survival Network (RSN)

Length: 12-18 months

Eligibility: Justice involved adults committed to living clean and sober

The Minna Project



The Minna Project is a culturally responsive, dual diagnosis transitional housing program with onsite supportive and clinical services. The program is a partnership between the San Francisco Adult Probation Department (SFAPD), the San Francisco Department of Public Health (SFDPH), Westside Community Services and UCSF Citywide. Through this dynamic and unique partnership, participants receive onsite clinical services, case management, reentry planning, benefits acquisition, and assistance with permanent housing placement

Provider: Westside Community Services and UCSF Citywide

Length: 12 - 24 months

Eligibility: History of mental illness and/or substance use disorder. Priority is given to justice involved adults exiting drug treatment programs, mental health diversion, and those from our Latinx community

Billy Holiday Reentry Navigation & Stabilization Center



The Billie Holiday Center (BHC) is a culturally responsive Reentry Navigation Center that provides stabilization housing and a rapid connection to next-step resources for justice-involved adults. Guests receive case management, reentry planning, assistance with permanent housing placement, benefits acquisition, and next-step resources including drug treatment, transitional housing, and services through the Community Assessment and Services Center (CASC). for j

Provider: Westside Community Services

Length: Varies - Average person is there for 17 days or less before moving to their next housing program or residential drug treatment program.

Eligibility: Any justice-involved adults who are unstably housed, struggling with addiction or mental illness, and those being released from the San Francisco County Jail

HER House Expansion program (WTRP)



The H.E.R. House Expansion (WTRP) is a structured gender responsive, culturally responsive, peer-led, abstinence-based, therapeutic teaching community and transitional housing program for justice-involved women and children. The mutual self-help community has a recovery orientation, focusing on wellness, coping strategies, prosocial living, and leadership development. The Program infuses a strength-based approach into the program's culturally responsive guiding principles of Respect, Interdependence, and Accountability. The model embraces peer-to-peer support which creates a sense of family, and fosters a support network that reaffirms prosocial values and behaviors. Participants will develop the skills necessary to take on challenges, overcome barriers, and become empowered to take charge of their health and wellness.

Provider: Tenderloin Housing Clinic (THC)

Length: 6 - 24 months

Eligibility: Justice involved single, pregnant, or parenting women

Drake Hotel - New Horizons Program



The New Horizons program is a clean and sober transitional housing program that provides onsite case management and supportive services.

Provider: Tenderloin Housing Clinic (THC)

Length: 12-18 months

Eligibility: Justice involved adults

Leroy Looper Graduate Program



The Leroy Looper program is a clean and sober transitional housing program designed to house clients who have successfully graduated from a residential treatment program and/or other more restrictive, structured, and intensive transitional housing program.

Provider: Tenderloin Housing Clinic (THC)

Length: 12-18 months

Eligibility: Justice involved adults who have successfully completed residential drug treatment and/or a transitional housing program

Positive Directions TRP Academy



The Positive Directions TRP Academy is a culturally responsive, peer-led, abstinence-based, therapeutic teaching community (TTC) and transitional housing program. The mutual self-help community has a recovery orientation, focusing on wellness, coping strategies, prosocial living, and leadership development. The TRP Academy infuses a strength-based approach into the program's culturally responsive guiding principles of Respect, Interdependence, and Accountability. The model embraces peer-to-peer support which creates a sense of family, and fosters a support network that reaffirms prosocial values and behaviors.

Provider: Westside Community Services

Length: 6 - 30 months

Eligibility: Justice involved Men; Medical Assisted Treatment (MAT) not accepted

Norma Hotel - FOF TAYA Housing Program



The Norma Hotel is a clean and sober, transitional housing program with onsite case management and supportive services. The program focuses on housing stability, personal development, and additional opportunities which lead to self-sufficiency and independence.

Provider: Recovery Survival Network (RSN)

Length: 12-18 months

Eligibility: Justice involved adults, 18 - 35 years old

Senior Ex-Offender (SEOP) Transitional Housing Program



The SEOP Housing program is a clean and sober transitional housing program that offers onsite case management and linkage to supportive services.

Provider: Bayview Hunters Point Senior Services

Length: 12-18 months

Eligibility: Justice involved men, ages 35 years and up

Phatt Chance Program



Phatt Chance is a shared living, clean and sober transitional housing program that offers onsite supportive services.

Provider: Phatt Chance Community Services

Length: 12-18 months

Eligibility: Justice involved Men; Priority is given to 290 registrants

Joseph McFee Center



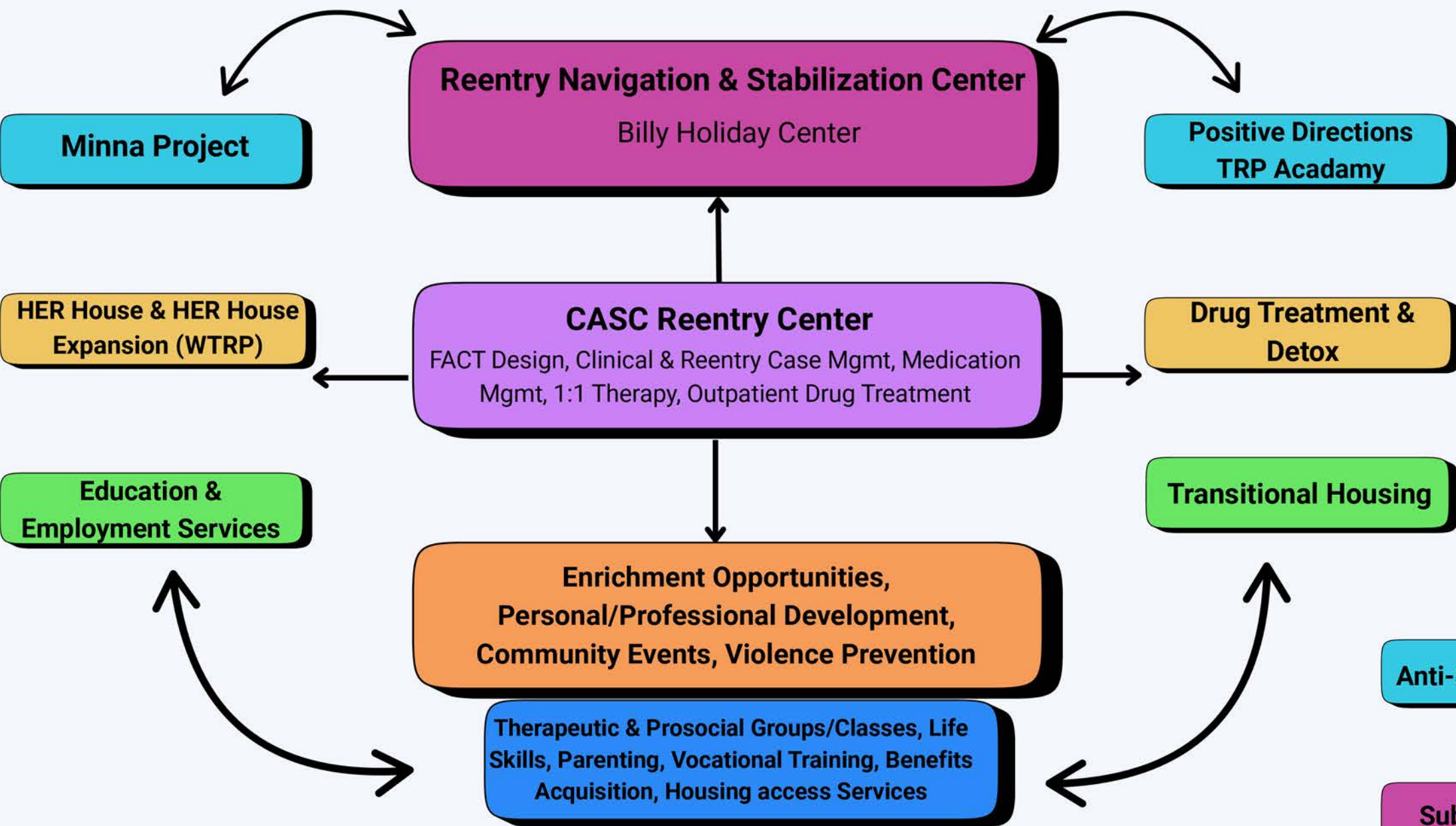
The Joseph McFee Center is a recovery focused transitional housing program that offers onsite supportive services and case management, connections to workforce development opportunities, and cultivates a transformative community based on the principles of recovery, accountability, and service. It fosters lifelong change by promoting positive values and behaviors through peer interaction, instruction, and community service

Provider: Salvation Army

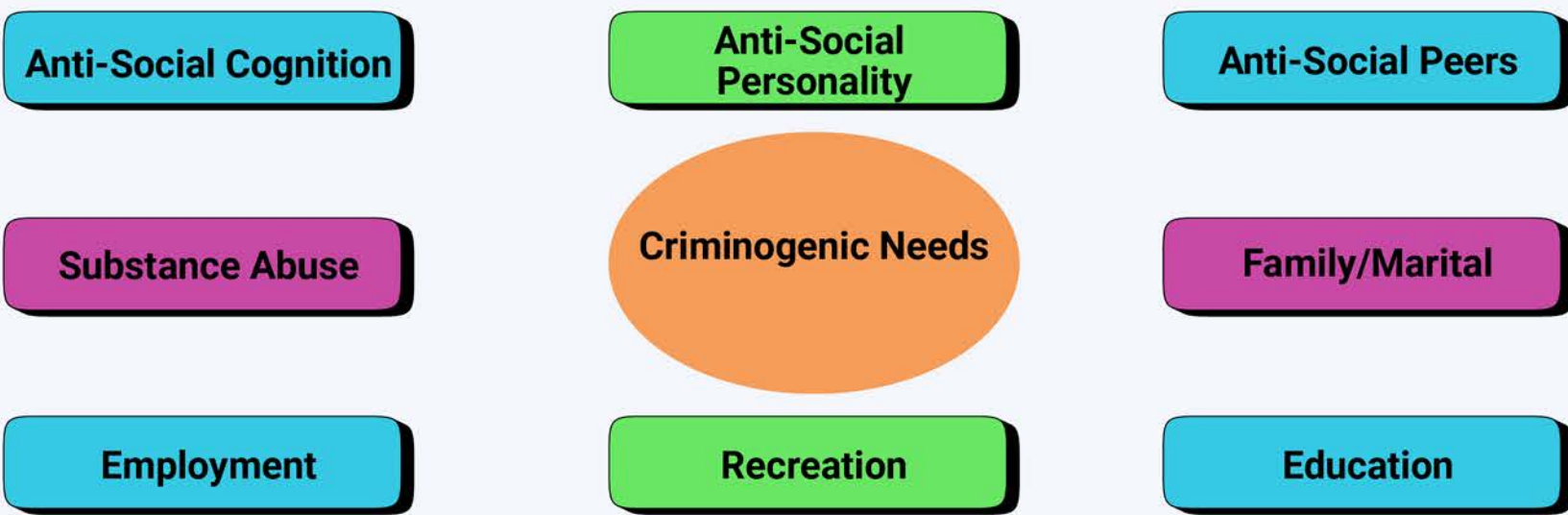
Length: 12-24 months

Eligibility: Justice involved adults who have successfully completed a residential drug treatment program

Reentry Care & Treatment Network



Criminogenic Needs



FY 24/25 Reentry Outcomes



2,770

Unduplicated Justice Involved Adults visited the CASC (There were 16,080 total CASC visits)



421

SFAPD clients engaged in the CASC's Clinical and Reentry Case Management



98

SFAPD clients engaged in the CASC Psychotropic Medication Management program, helping clients with behavioral health challenges stabilize



205

Drug Treatment Services are fundamental to life change, 155 SFAPD clients accessed residential treatment and 50 clients accessed outpatient services



901

Number of justice involved people participating in APD funded employment services



1,160

Justice involved adults were housed across SFAPD's 14 transitional housing programs



122,187

SFAPD funded housing programs reduced homelessness in San Francisco by 122,187 days



\$718,984

Participants in SFAPD funded housing programs saved \$718,984 during FY24/25



1,505

SFAPD housing participants completed 1,505 housing applications



190

190 housing program participants exited to permanent/stable housing



Thank You!