

SFMTA | OPERATOR CONVENIENCE FACILITIES

BUCKINGHAM & 19TH AVE. - SUNNYDALE & MCLAREN

CIVIC DESIGN REVIEW PHASE II & III
APRIL, 2015



SFMTA

Municipal Transportation Agency



DESIGN CRITERIA

TEMPORARY / PREFABRICATED FACILITIES

- A. ADA Accessible
- B. Dependent on service volume at specific locations
- C. Direct connection to city utilities with the possibility of relocation if terminal location changes

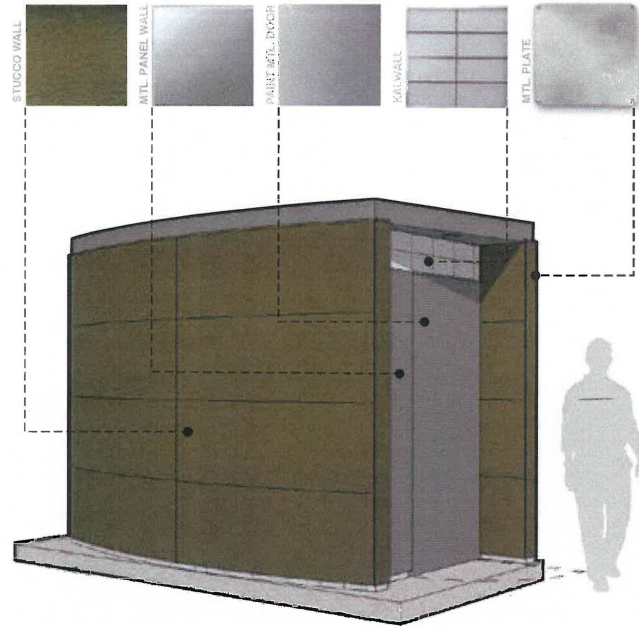
NEW LOCATIONS

- 1. Buckingham Way and 19th Avenue
- 2. Sunnydale and McLaren

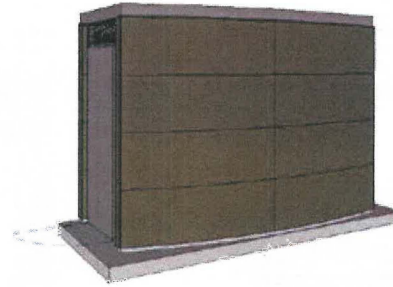


BASIC MODULE DESIGN - NARROW UNIT

MATERIALS & COLOR SCHEME



SINGLE OCCUPANCY - BASIC MODULE

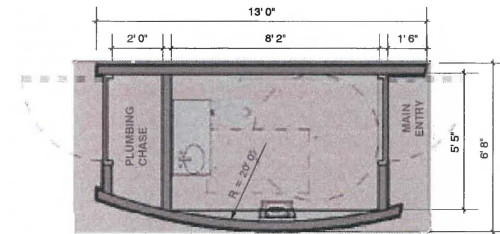


SINGLE OCCUPANCY - BASIC MODULE REAR VIEW

DESIGN CRITERIA

TEMPORARY/ PREFABRICATED FACILITIES

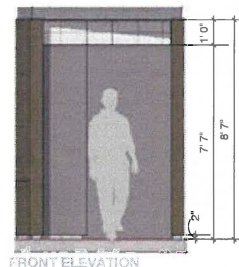
WALLS: C.M.U. WALLS WITH CEMENT PLASTER, PAINT & ANTIGRAFFITI COATING.
INTERIOR FINISH: EXPOSED CMU W/ EPOXY PAINT.
DOORS: GALVANIZED METAL DOORS, PAINTED.
NATURAL ILLUMINATION: KALWALL.
VENTILATION: METAL LOUVERS & MECHANICAL EXHAUST FAN.
LIGHTING: INTERIOR - MOTION ACTIVATED LIGHT, EXTERIOR - RECESSED CEILING LIGHT.
FLOOR: EXPOSED CONCRETE.



FLOOR PLAN - SINGLE OCCUPANCY- BASIC MODULE



RIGHT ELEVATION



FRONT ELEVATION



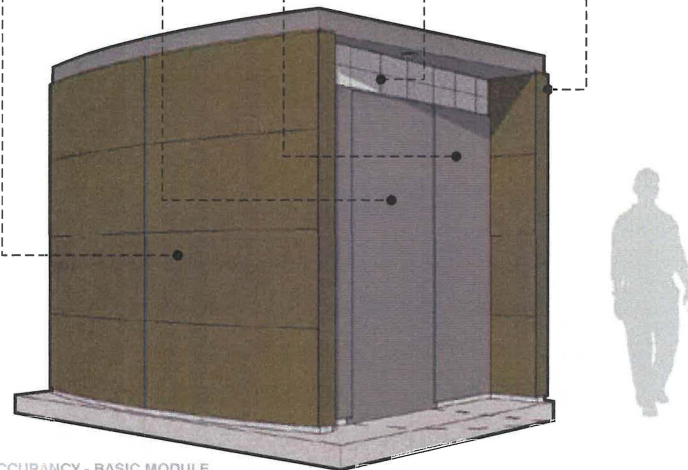
BACK ELEVATION



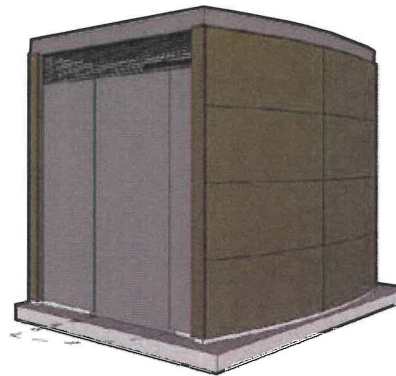
LEFT ELEVATION

BASIC MODULE DESIGN - STANDARD UNIT

MATERIALS & COLOR SCHEME



SINGLE OCCUPANCY - BASIC MODULE

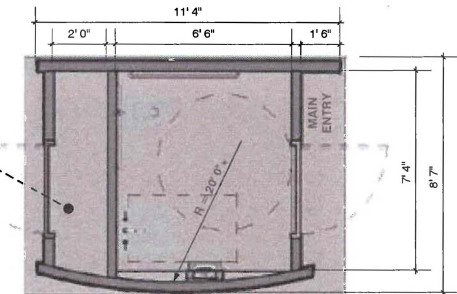


DESIGN CRITERIA

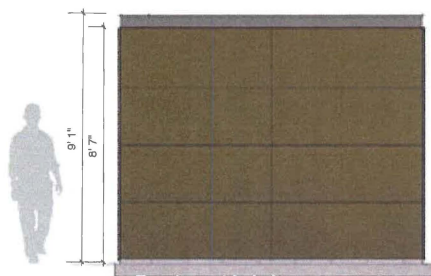
TEMPORARY/ PREFABRICATED FACILITIES

- WALLS:** C.M.U. WALLS WITH CEMENT PLASTER, PAINT & ANTIGRAFFITI COATING.
- INTERIOR FINISH:** EXPOSED CMU W/ EPOXY PAINT.
- DOORS:** GALVANIZED METAL DOORS, PAINTED.
- NATURAL ILLUMINATION:** KALWALL.
- VENTILATION:** METAL LOUVERS & MECHANICAL EXHAUST FAN.
- LIGHTING:** INTERIOR - MOTION ACTIVATED LIGHT, EXTERIOR - RECESSED CEILING LIGHT.
- FLOOR:** EXPOSED CONCRETE.

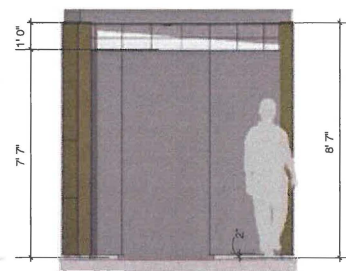
UTILITY/PLUMBING CHASE



FLOOR PLAN - SINGLE OCCUPANCY- BASIC MODULE

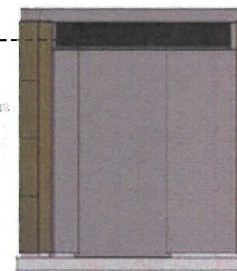


RIGHT ELEVATION

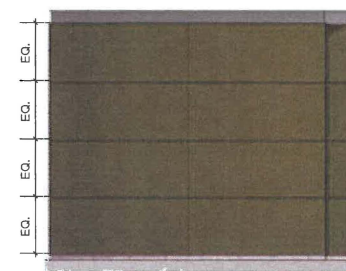


FRONT ELEVATION

METAL LOUVERS



BACK ELEVATION



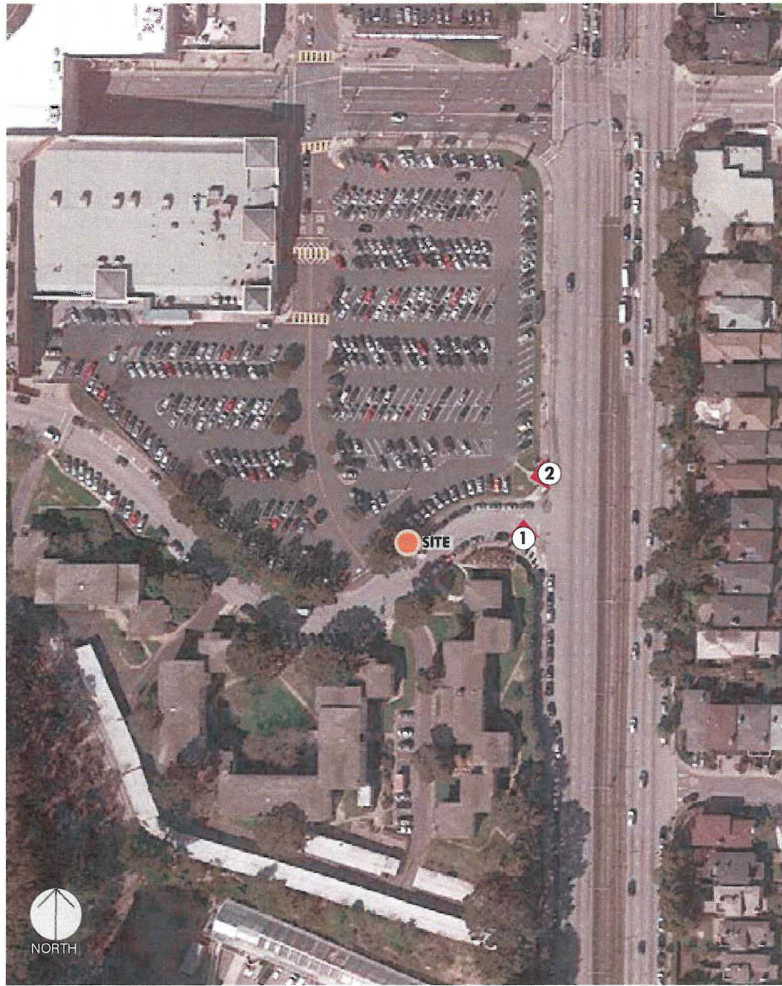
LEFT ELEVATION

scale=1/4"

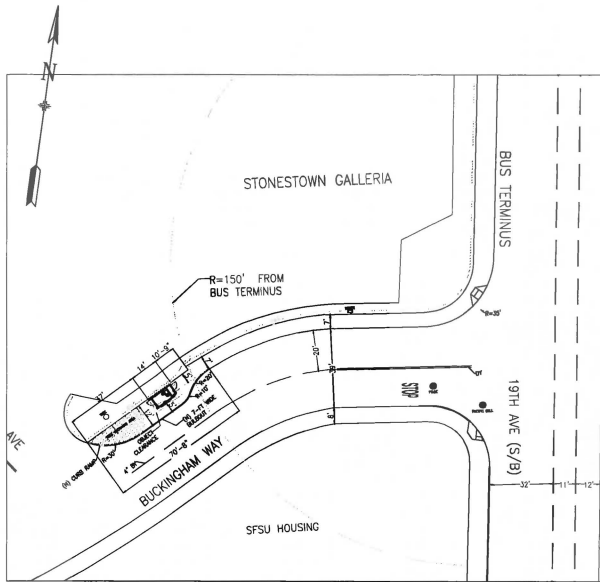
3RD STREET AND FITZGERALD AVE. | INSTALLATION



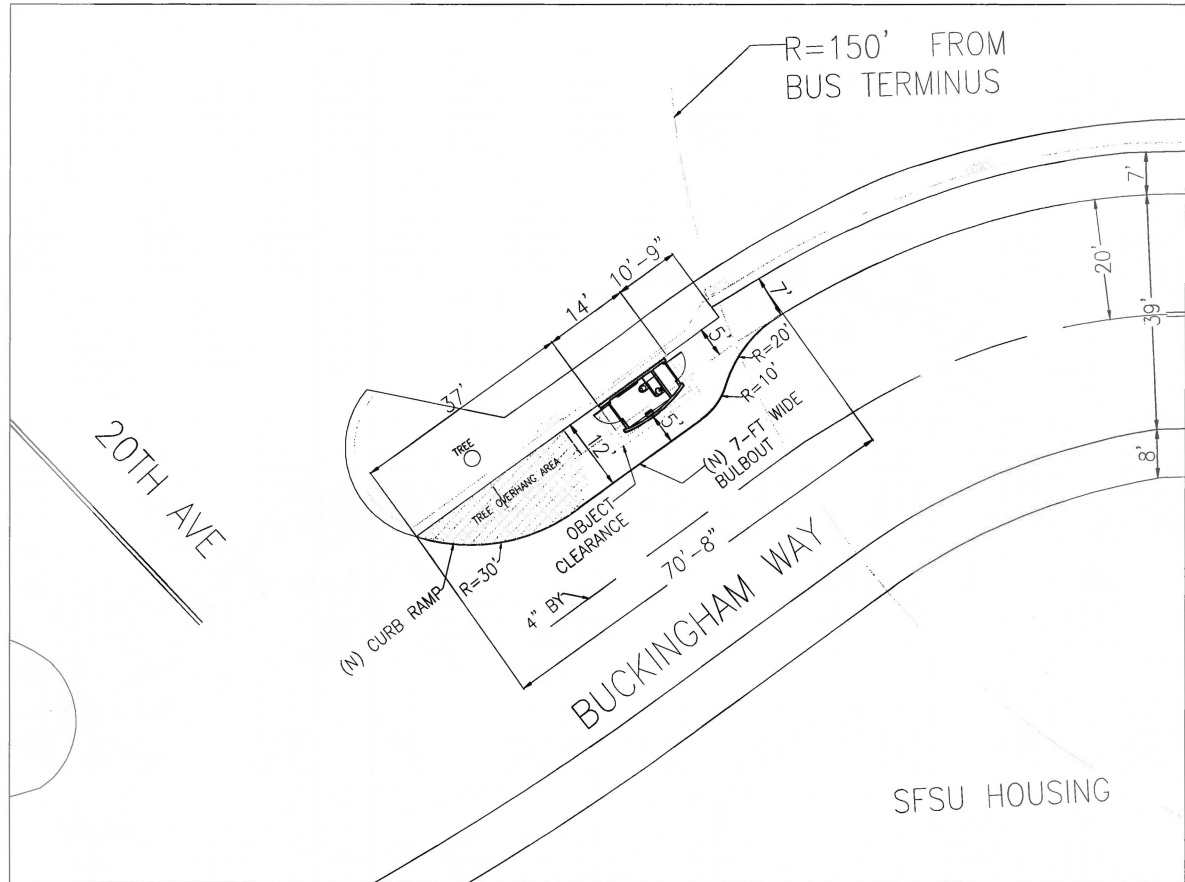
BUCKINGHAM WAY AND 19TH AVE. | SITE MAP & SITE PHOTOS



BUCKINGHAM WAY AND 19TH AVE. | SITE PLAN (N.T.S.)



SCALE:
1" = 60'



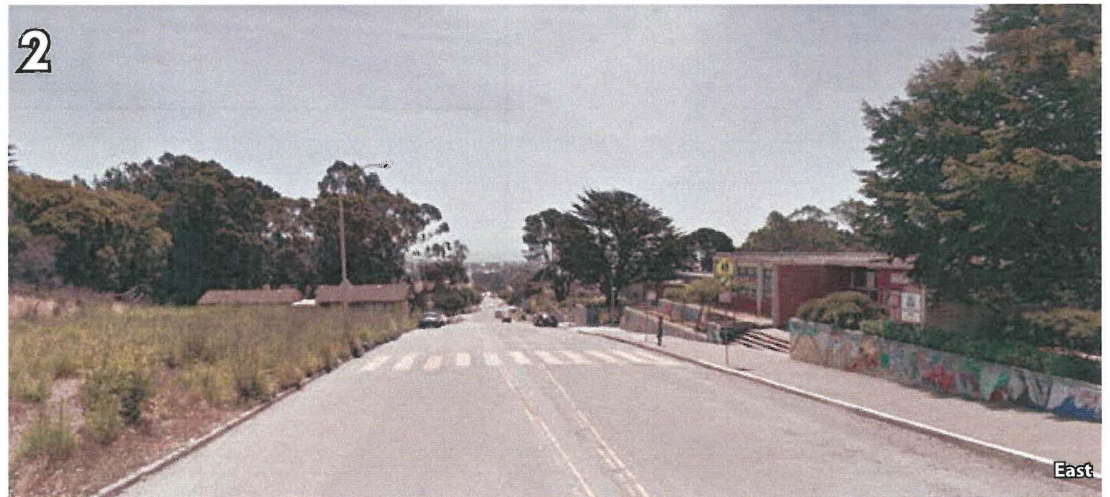
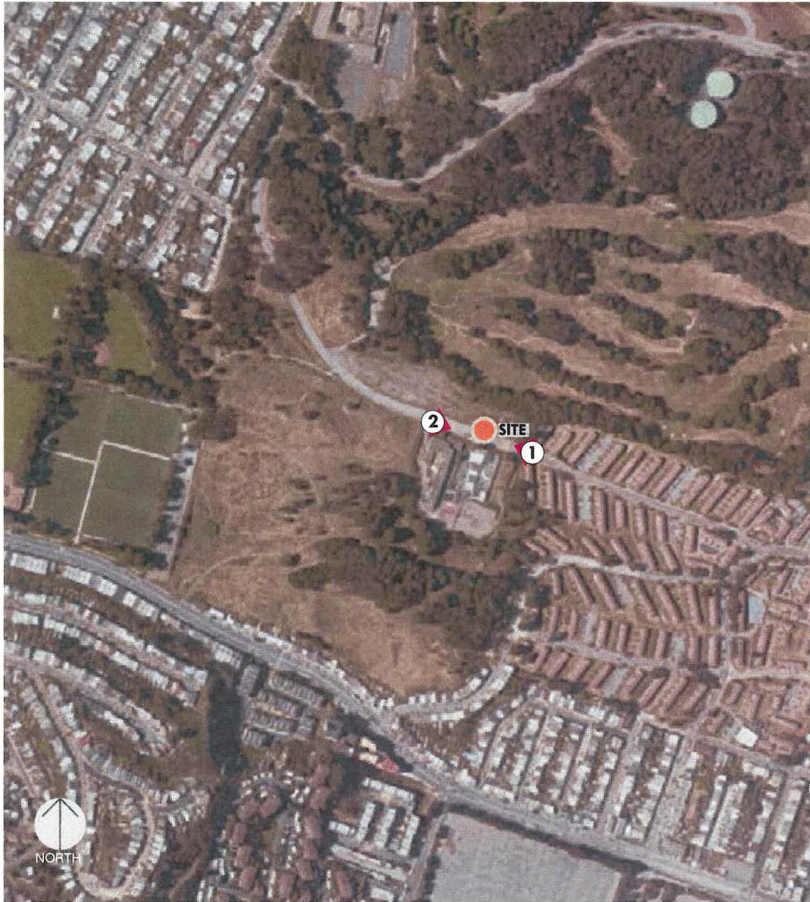
SCALE:
1" = 20'



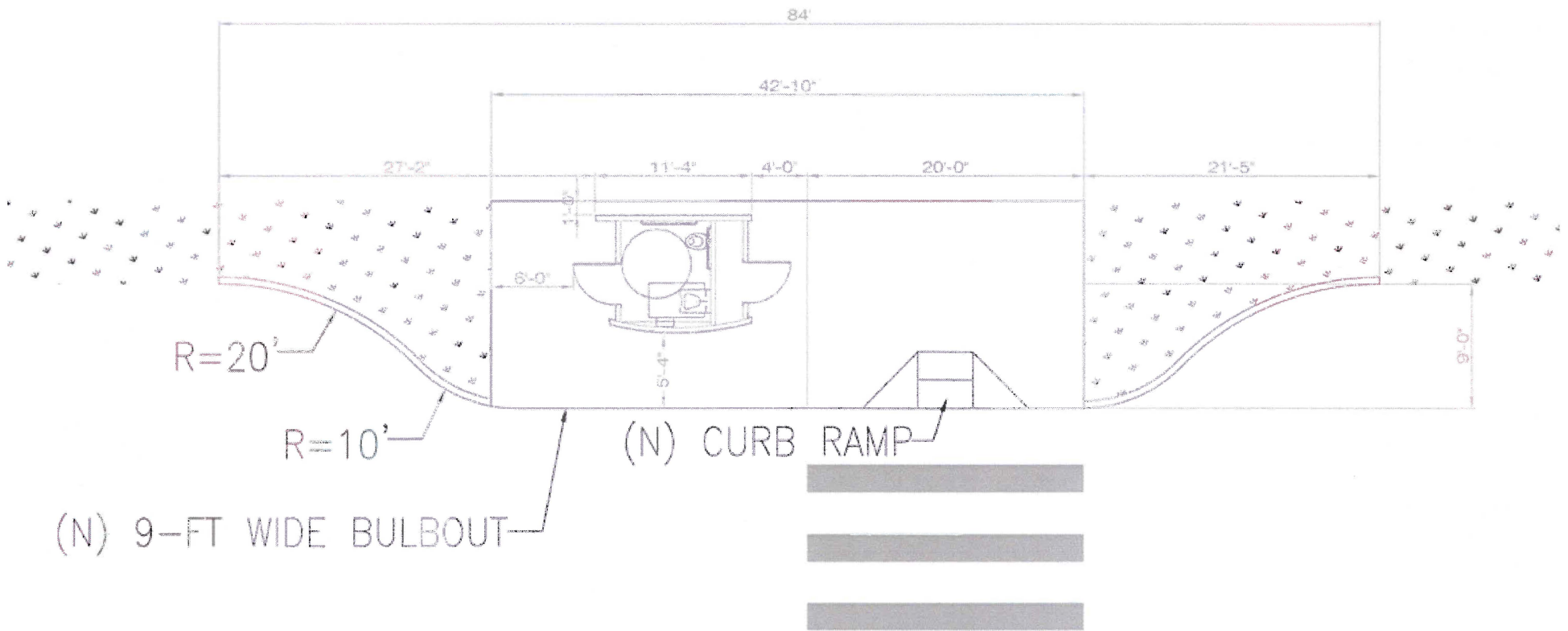
BUCKINGHAM WAY AND 19TH AVE. | PERSPECTIVE NO. 01



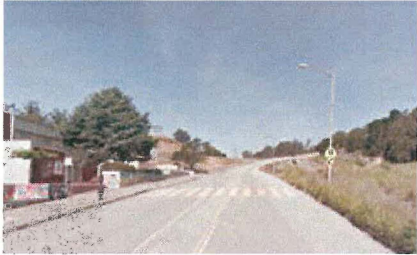
SUNNYDALE AND MCLAREN | SITE MAP & SITE PHOTOS



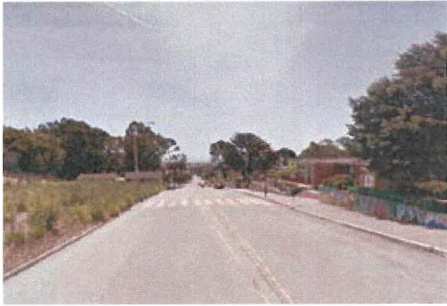
SUNNYDALE AND MCLAREN | SITE PLAN (N.T.S.)



SUNNYDALE AND MCLAREN | PERSPECTIVE NO. 01



SUNNYDALE AND MCLAREN | PERSPECTIVE NO. 02



SFMTA | OPERATOR CONVENIENCE FACILITIES

PARKRIDGE DRIVE & BURNETT AVENUE

CIVIC DESIGN REVIEW PHASES II & III
AUGUST 2015



SFMTA

Municipal Transportation Agency



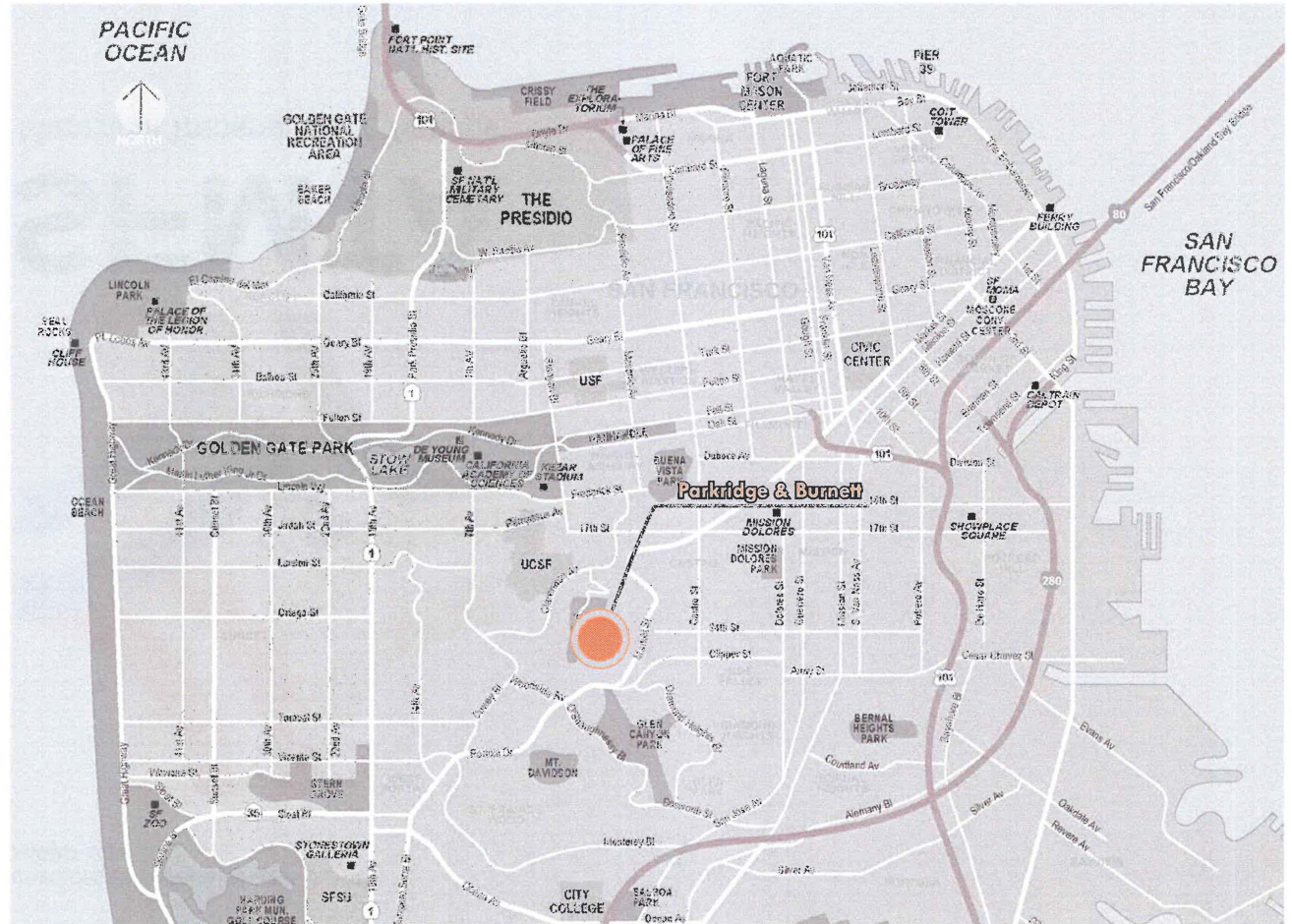
DESIGN CRITERIA

TEMPORARY / PREFABRICATED FACILITIES

- A. ADA Accessible
- B. Dependent on service volume at specific locations
- C. Direct connection to city utilities with the possibility of relocation if terminal location changes

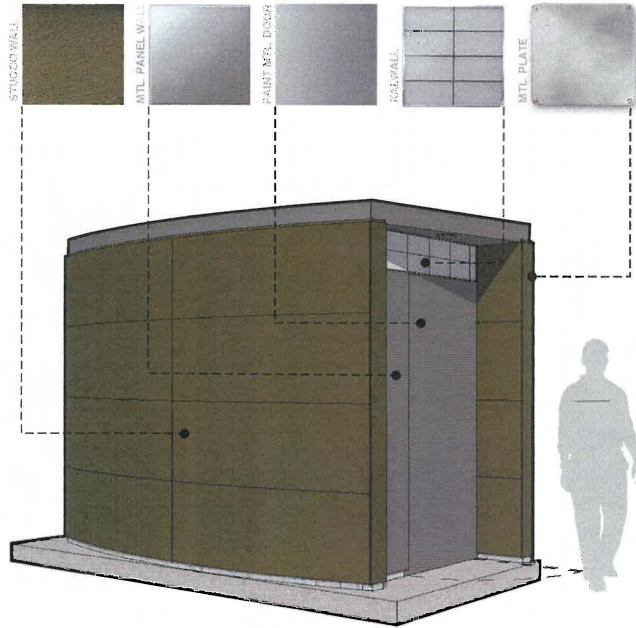
NEW LOCATIONS

BUS LINE 37 Parkridge Drive and Burnett Avenue

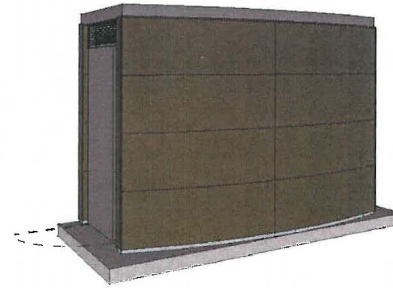


BASIC MODULE DESIGN

MATERIALS & COLOR SCHEME



SINGLE OCCUPANCY - BASIC MODULE

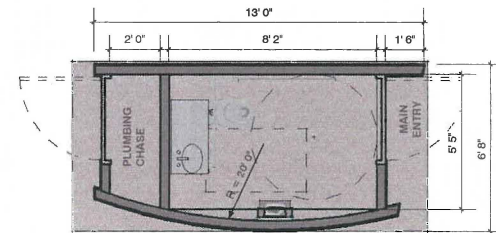


SINGLE OCCUPANCY - BASIC MODULE REAR VIEW

DESIGN CRITERIA

TEMPORARY/ PREFABRICATED FACILITIES

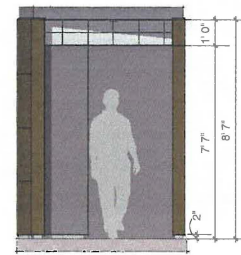
WALLS: C.M.U. WALLS WITH CEMENT PLASTER, PAINT & ANTIGRAFFITI COATING.
INTERIOR FINISH: EXPOSED CMU W/ EPOXY PAINT.
DOORS: GALVANIZED METAL DOORS, PAINTED.
NATURAL ILLUMINATION: KALWALL.
VENTILATION: METAL LOUVERS & MECHANICAL EXHAUST FAN.
LIGHTING: INTERIOR - MOTION ACTIVATED LIGHT, EXTERIOR - RECESSED CEILING LIGHT.
FLOOR: EXPOSED CONCRETE.



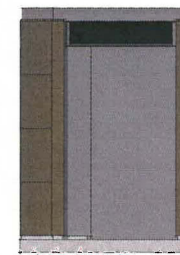
FLOOR PLAN - SINGLE OCCUPANCY- BASIC MODULE



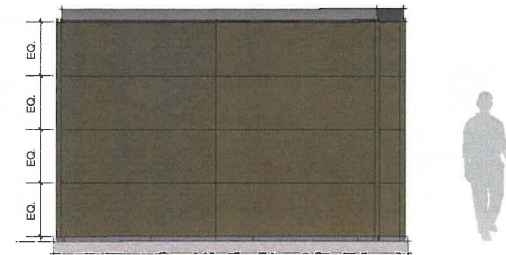
RIGHT ELEVATION



FRONT ELEVATION

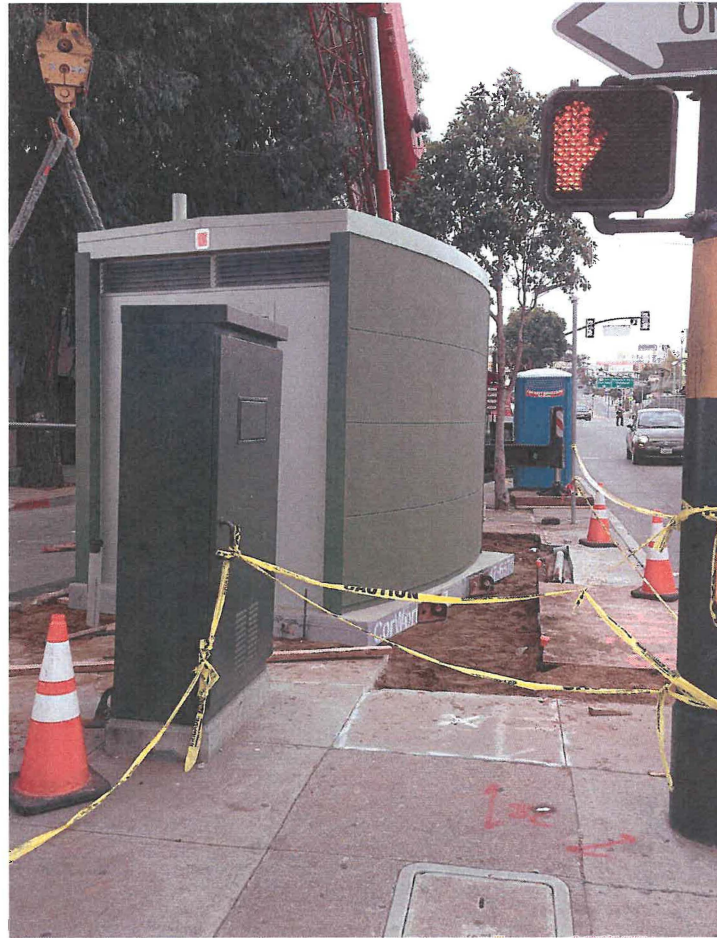


BACK ELEVATION

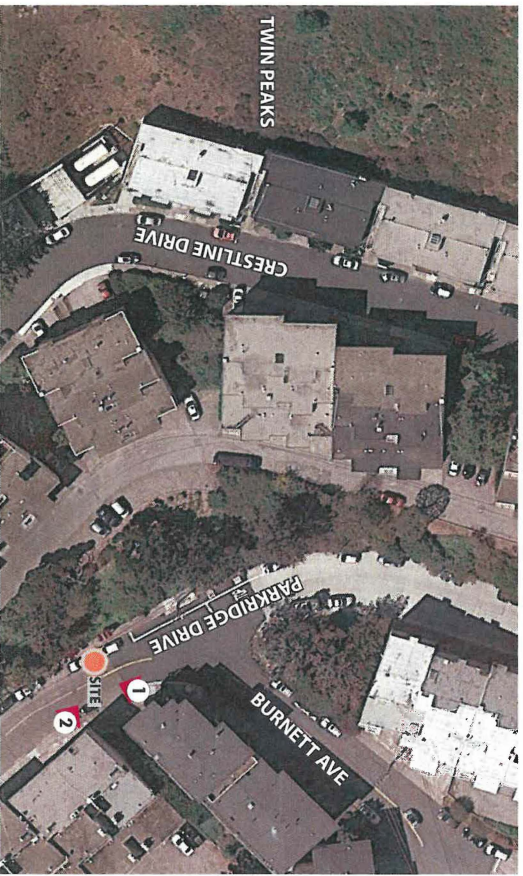


LEFT ELEVATION

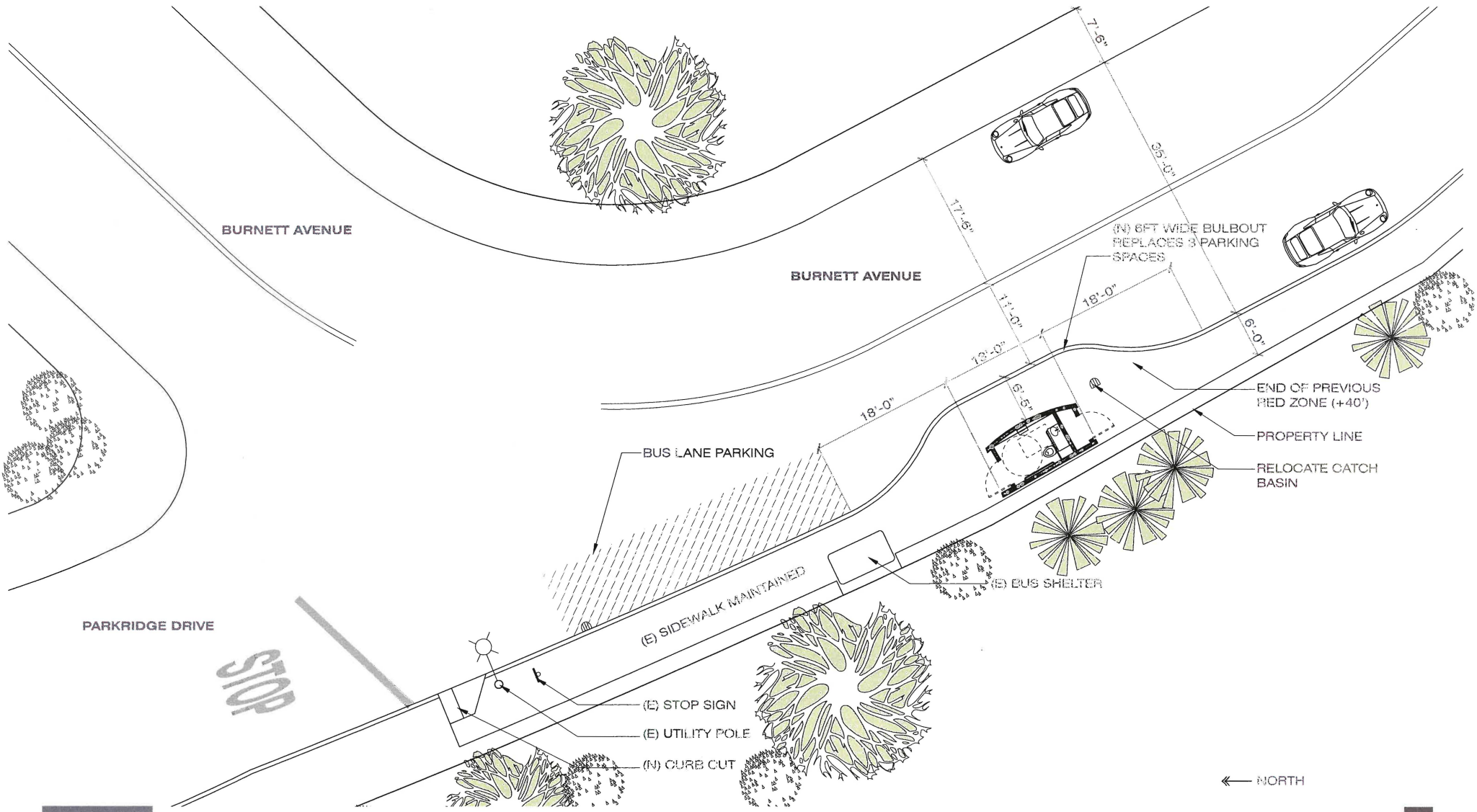
3RD STREET AND FITZGERALD AVE. | INSTALLATION



SITE MAP & PHOTOS



SITE PLAN (N.T.S.)



PERSPECTIVE 1 - LOOKING SOUTH



PERSPECTIVE 2 - LOOKING NORTH

