



GRANITE

Excavation & Demolition, Inc.

#18233
#181237

LIC. # 609169 A C21 HAZ ASB DOSH

January 24th, 2019

Clerk of the Board
San Francisco Board of Supervisors
City Hall
1 Dr. Carlton B. Goodlett Place
San Francisco, CA 94102-4689

Re: 3637-3657 Sacramento St- Case 2007.1347E

Dear President Yee and Members of the Supervisors.

We are the proposed contractors for the demolition, shoring and excavation of the above project. This is a typical infill project in San Francisco. We have completed hundreds of very similar projects.

As to the depth of the excavation, we completed over 20 in the last two year in all neighborhoods of San Francisco without incident or any damage to adjacent structures. See a list of recent projects enclosed with attached photographs.

The typical demolition of these kind of structures is done with an excavator/backhoe and the walls are chase cut with a jack hammer/rivet buster. Concrete is loaded onto trucks and taken to Brisbane Recycling where the large pieces are pulverized, crushed and recycled for reuse.

Shoring and underpinning is done with a small drill rig and the underpinning pits are hand dug under adjacent foundations. Rebar and concrete are placed in the pits. All of this work is observed on a daily basis by the design engineers, inspected by the SF Department of Building Inspection, the original soil engineer, a testing laboratory for the concrete and the surveyor monitors property lines, settlement lines, etc.

Excavation on this site will be done with a medium size excavator and the sand will be hauled away for reuse on trucks.



GRANITE

Excavation & Demolition, Inc.

LIC. # 609169 A C21 HAZ ASB DOSH

The equipment listed by the project sponsor is very typical for small projects like this one since the site is small we cannot use very large and/or multiple pieces.

Sincerely,

Erwin O'Toole PE, Project Manager
Granite Excavation & Demolition, Inc.



GRANITE

Excavation & Demolition, Inc.

LIC. # 609169 A C21 HAZ ASB DOSH

Small Selection of 2017 and 2018 projects



Figure 1 915 Minna excavation using conventional equipment (Demolition, Excavation and shoring 5,000CY)



GRANITE

Excavation & Demolition, Inc.

LIC. # 609169 A C21 HAZ ASB DOSH



Figure 2 Hattie Street Demolition using excavator with no hoe-ram (Demolition, Excavation and shoring 2,000 CY)



GRANITE

Excavation & Demolition, Inc.

LIC. # 609169 A C21 HAZ ASB DOSH



Figure 3 333 12th Street Conventional Equipment (Demolition, Excavation and shoring 20,000 CY)



GRANITE

Excavation & Demolition, Inc.

LIC. # 609169 A C21 HAZ ASB DOSH



Figure 4 333 12th Street Conventional Equipment (Demolition, Excavation and shoring 20,000 CY)



GRANITE

Excavation & Demolition, Inc.

LIC. # 609169 A C21 HAZ ASB DOSH

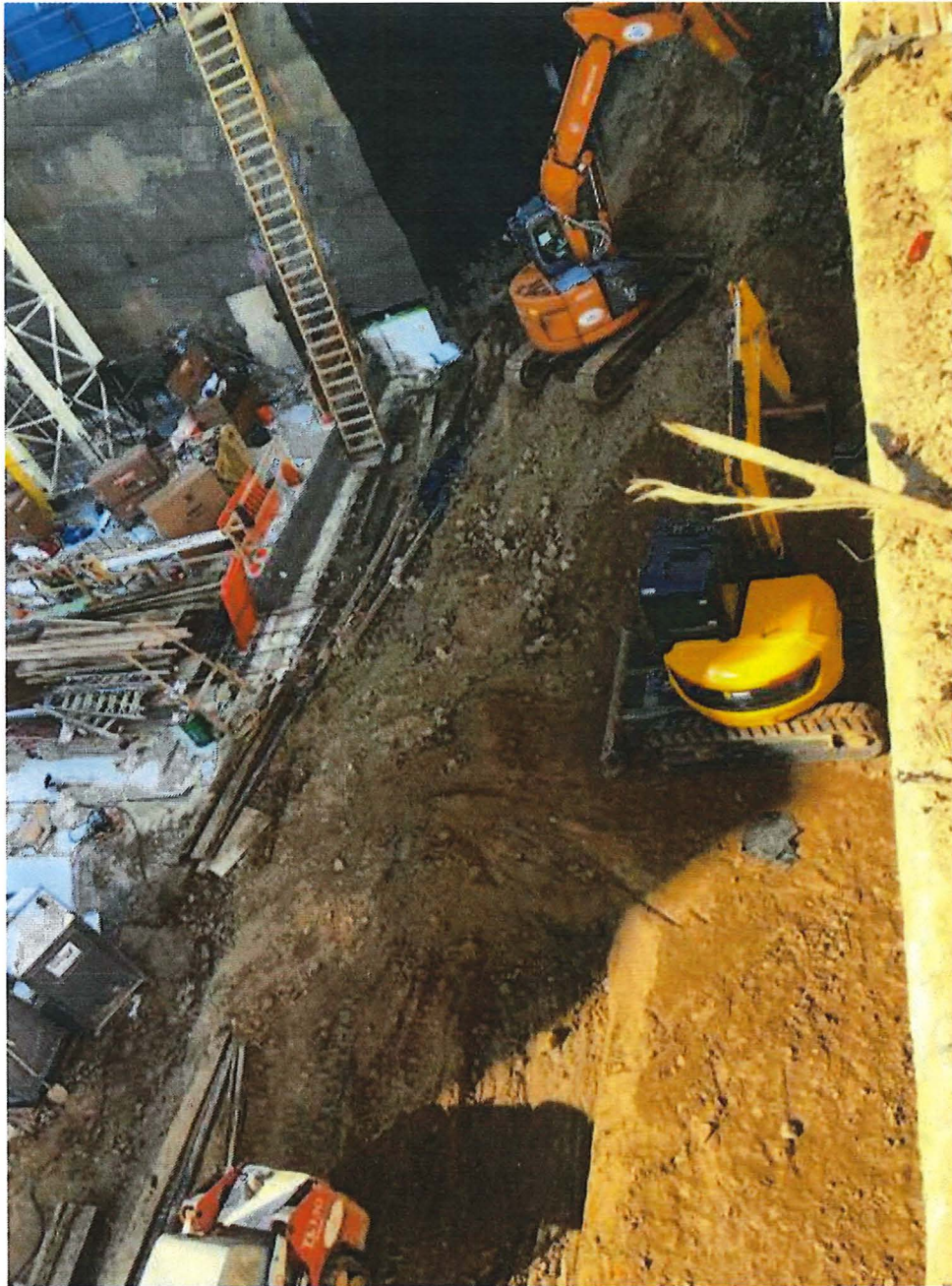


Figure 5. 390 1st Street Excavation of sandstone with no hoe-rams. All equipment shown is <63hp (Demolition, Excavation and shoring 28,000 CY)



GRANITE

Excavation & Demolition, Inc.

LIC. # 609169 A C21 HAZ ASB DOSH



Figure 6 1433 Bush Street Demolition, Excavation and shoring 6,000 CY



GRANITE

Excavation & Demolition, Inc.

LIC. # 609169 A C21 HAZ ASB DOSH



Figure 7 1433 Bush Street Demolition using small tools



GRANITE

Excavation & Demolition, Inc.

LIC. # 609169 A C21 HAZ ASB DOSH



Figure 8 1810 8th Ave - 30,000 CY of sand. All compaction done with water and excavator. No vibratory rollers. Note hand dug pits.



GRANITE

Excavation & Demolition, Inc.

LIC. # 609169 A C21 HAZ ASB DOSH



Figure 9 - 2833 Vallejo St - Hand dug pits and internal bracing