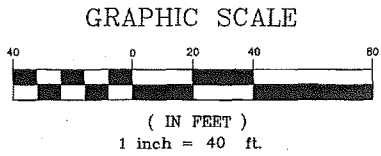


Curve Table			
Curve #	Length	Radius	Delta
C1	15.50	15.00	59°11'34"
C2	24.45	15.46	90°38'14"
C3	4.21	2.00	120°41'44"
C4	26.70	10.27	148°59'01"

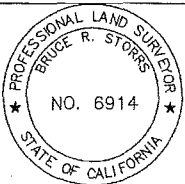
Line Table	
Line #	Length
L1	15.34
L2	102.21
L3	17.52
L4	23.19
L5	17.43

LEGEND

- NEW CURB LINE
- - - PROPERTY LINE
- EXISTING OFFICIAL CURB TO REMAIN
- - - EXISTING OFFICIAL CURB TO BE REMOVED



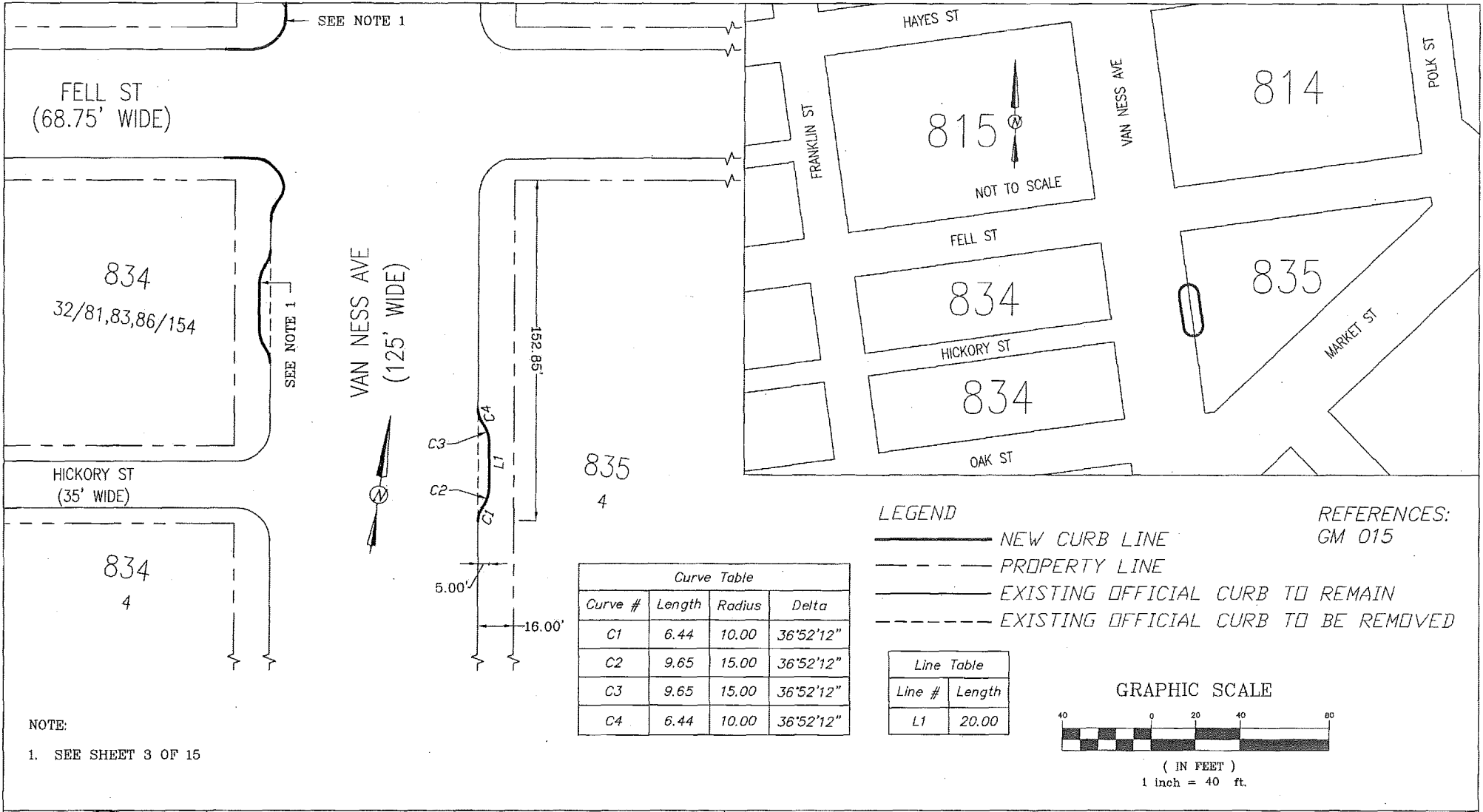
REFERENCES:
GM 260
GM 284



APPROVED:
Bruce R. Storrs
BRUCE R. STORRS
CITY & COUNTY SURVEYOR

4/9/2015
DATE

CITY AND COUNTY OF SAN FRANCISCO
DEPARTMENT OF PUBLIC WORKS
OFFICIAL SIDEWALK CHANGE OF THE NORTHWEST CORNER OF THE INTERSECTION OF
SOUTH VAN NESS AVENUE AND 12TH STREET, FRONTING AB 3505 LOT 012 AND LOT 010
FILE: Q-20-817 SHEET 1 OF 15 SCALE: 1:40 CHANGE



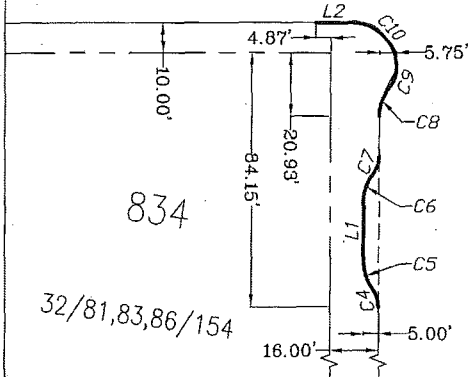
APPROVED:
Bruce R. Storrs
BRUCE R. STORRS
CITY & COUNTY SURVEYOR

11/9/2015
DATE

CITY AND COUNTY OF SAN FRANCISCO
DEPARTMENT OF PUBLIC WORKS

OFFICIAL SIDEWALK CHANGE OF THE EASTERLY SIDE OF THE INTERSECTION OF VAN NESS AVENUE AND HICKORY STREET, FRONTING AB 0835 LOT 004

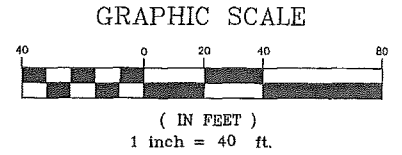
FILE: Q-20-817	SHEET 2 OF 15	SCALE: 1:40	CHANGE
-------------------	---------------	-------------	--------



Line Table	
Line #	Length
L1	20.00
L2	11.63
L3	16.84
L4	15.06

Curve Table			
Curve #	Length	Radius	Delta
C1	10.38	15.00	39°38'46"
C2	6.92	10.00	39°38'46"
C3	15.71	10.00	90°00'00"
C4	6.44	10.00	36°52'12"
C5	9.65	15.00	36°52'12"
C6	9.65	15.00	36°52'12"
C7	6.44	10.00	36°52'12"
C8	10.38	15.00	39°38'46"
C9	6.92	10.00	39°38'46"
C10	23.56	15.00	90°00'00"

REFERENCES:
GM 015



LEGEND

———— NEW CURB LINE

----- PROPERTY LINE

———— EXISTING OFFICIAL CURB TO REMAIN

----- EXISTING OFFICIAL CURB TO BE REMOVED



APPROVED:

Bruce R. Storrs

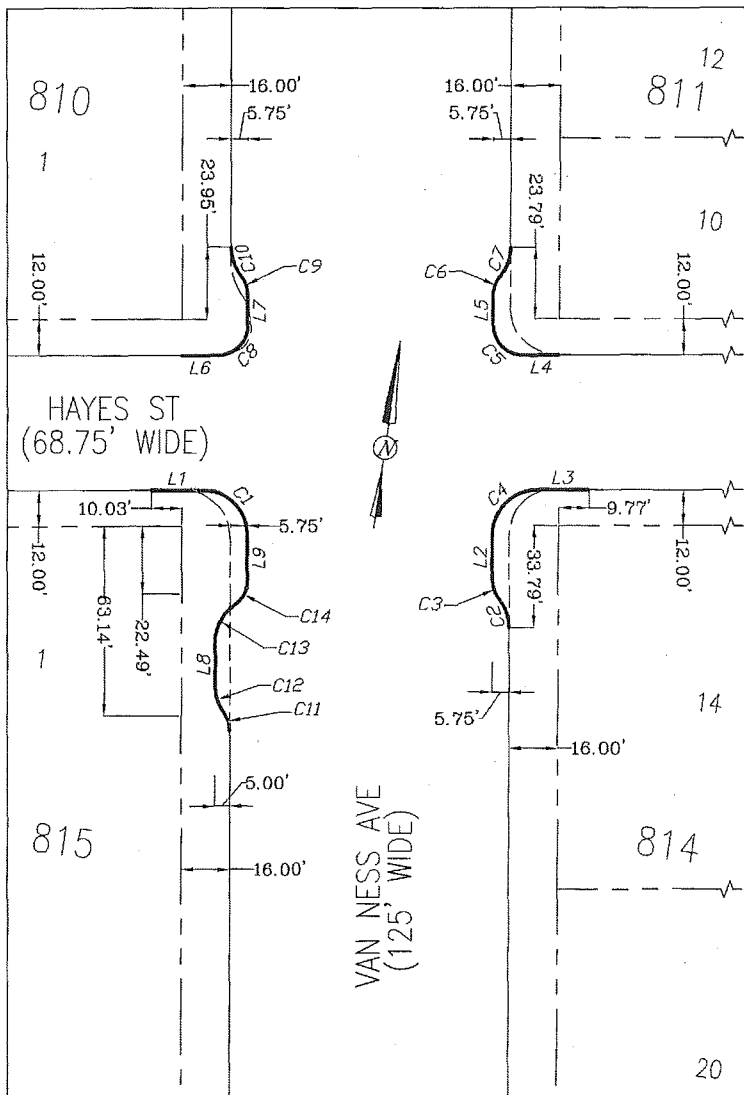
BRUCE R. STORRS
CITY & COUNTY SURVEYOR

11/7/2015
DATE

CITY AND COUNTY OF SAN FRANCISCO
DEPARTMENT OF PUBLIC WORKS

OFFICIAL SIDEWALK CHANGE OF THE CORNERS OF THE INTERSECTION OF VAN NESS AVENUE AND FELL STREET, FRONTING AB 0814 LOT 014, AB 0815 LOT 001 AND AB 0834 LOT 032/081,083,086/154

FILE: Q-20-817 SHEET 3 OF 15 SCALE: 1:40 CHANGE



Line Table	
Line #	Length
L1	16.80
L2	14.85
L3	16.50
L4	11.64
L5	9.84
L6	11.78
L7	10.00
L8	14.47
L9	15.00

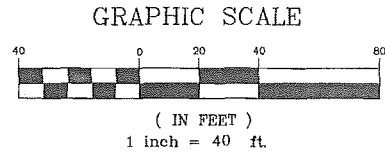
Curve Table			
Curve #	Length	Radius	Delta
C1	23.56	15.00	90°00'00"
C2	10.38	15.00	39°38'46"
C3	6.92	10.00	39°38'46"
C4	23.56	15.00	90°00'00"
C5	15.71	10.00	90°00'00"
C6	6.92	10.00	39°38'46"
C7	10.38	15.00	39°38'46"
C8	15.71	10.00	90°00'00"
C9	6.92	10.00	39°38'46"
C10	10.38	15.00	39°38'46"
C11	6.44	10.00	36°52'12"
C12	9.65	15.00	36°52'12"
C13	14.46	15.00	55°14'59"
C14	9.64	10.00	55°14'59"



LEGEND

- NEW CURB LINE
- PROPERTY LINE
- EXISTING OFFICIAL CURB TO REMAIN
- EXISTING OFFICIAL CURB TO BE REMOVED

REFERENCES:
GM 015



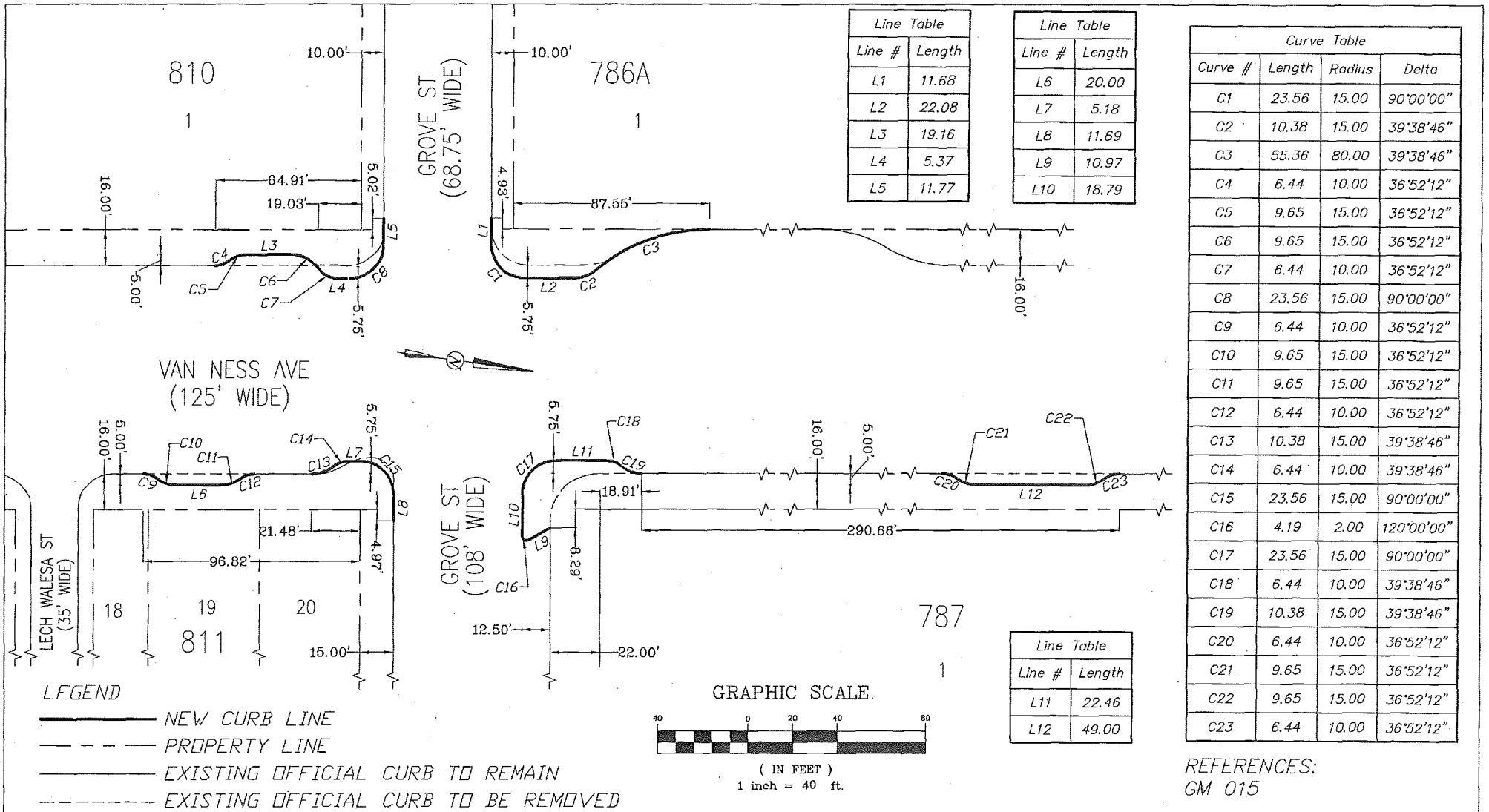
APPROVED:
Bruce R. Storrs
BRUCE R. STORRS
CITY & COUNTY SURVEYOR

11/9/2015
DATE

CITY AND COUNTY OF SAN FRANCISCO
DEPARTMENT OF PUBLIC WORKS

OFFICIAL SIDEWALK CHANGE OF THE CORNERS OF THE INTERSECTION OF VAN NESS AVENUE AND HAYES STREET, FRONTING AB 0810 LOT 001, AB 0811 LOT 010, AB 0814 LOT 014 AND AB 0815 LOT 001

FILE: Q-20-817	SHEET 4 OF 15	SCALE: 1:40	CHANGE
-------------------	---------------	-------------	--------



Line Table	
Line #	Length
L1	11.68
L2	22.08
L3	19.16
L4	5.37
L5	11.77

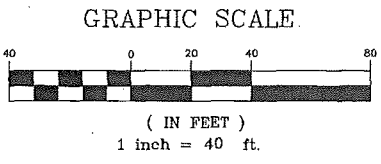
Line Table	
Line #	Length
L6	20.00
L7	5.18
L8	11.69
L9	10.97
L10	18.79

Curve Table			
Curve #	Length	Radius	Delta
C1	23.56	15.00	90°00'00"
C2	10.38	15.00	39°38'46"
C3	55.36	80.00	39°38'46"
C4	6.44	10.00	36°52'12"
C5	9.65	15.00	36°52'12"
C6	9.65	15.00	36°52'12"
C7	6.44	10.00	36°52'12"
C8	23.56	15.00	90°00'00"
C9	6.44	10.00	36°52'12"
C10	9.65	15.00	36°52'12"
C11	9.65	15.00	36°52'12"
C12	6.44	10.00	36°52'12"
C13	10.38	15.00	39°38'46"
C14	6.44	10.00	39°38'46"
C15	23.56	15.00	90°00'00"
C16	4.19	2.00	120°00'00"
C17	23.56	15.00	90°00'00"
C18	6.44	10.00	39°38'46"
C19	10.38	15.00	39°38'46"
C20	6.44	10.00	36°52'12"
C21	9.65	15.00	36°52'12"
C22	9.65	15.00	36°52'12"
C23	6.44	10.00	36°52'12"

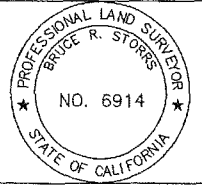
Line Table	
Line #	Length
L11	22.46
L12	49.00

LEGEND

- NEW CURB LINE
- - - PROPERTY LINE
- EXISTING OFFICIAL CURB TO REMAIN
- - - EXISTING OFFICIAL CURB TO BE REMOVED



REFERENCES:
GM 015

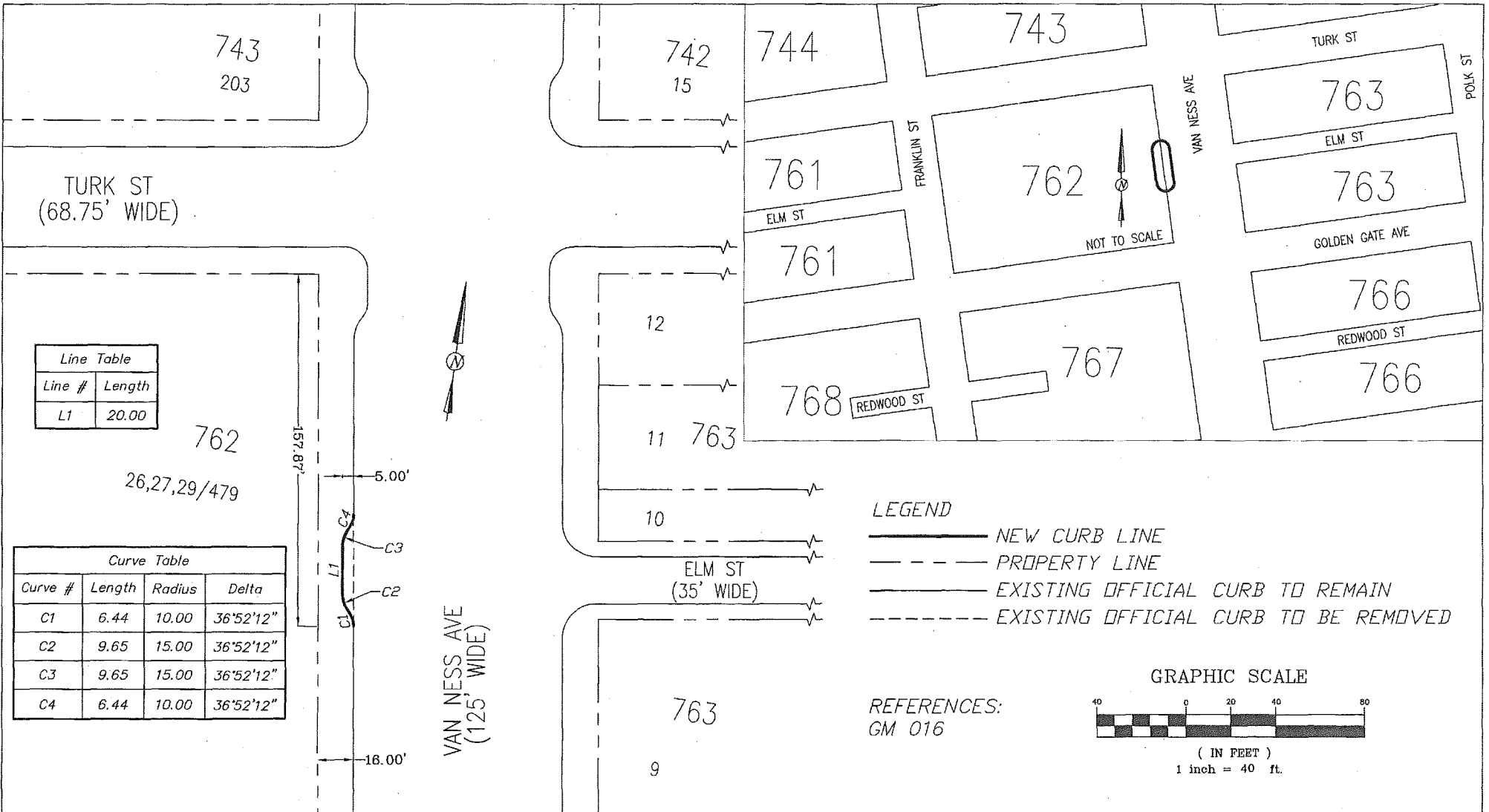


APPROVED:
Bruce R. Storrs
BRUCE R. STORRS
CITY & COUNTY SURVEYOR

11/9/2015
DATE

CITY AND COUNTY OF SAN FRANCISCO
DEPARTMENT OF PUBLIC WORKS
OFFICIAL SIDEWALK CHANGE OF THE CORNERS OF THE INTERSECTION OF VAN NESS AVENUE AND GROVE STREET,
AND THE EASTERLY SIDE OF VAN NESS AVENUE, FRONTING AB 0787 LOT 001

FILE: Q-20-817 SHEET 5 OF 15 SCALE: 1:40 CHANGE



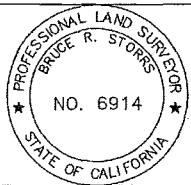
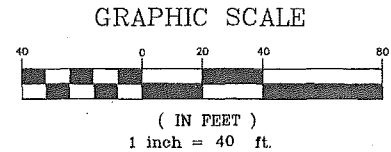
Line Table	
Line #	Length
L1	20.00

Curve Table			
Curve #	Length	Radius	Delta
C1	6.44	10.00	36°52'12"
C2	9.65	15.00	36°52'12"
C3	9.65	15.00	36°52'12"
C4	6.44	10.00	36°52'12"

LEGEND

- NEW CURB LINE
- PROPERTY LINE
- EXISTING OFFICIAL CURB TO REMAIN
- EXISTING OFFICIAL CURB TO BE REMOVED

REFERENCES:
GM 016



APPROVED:

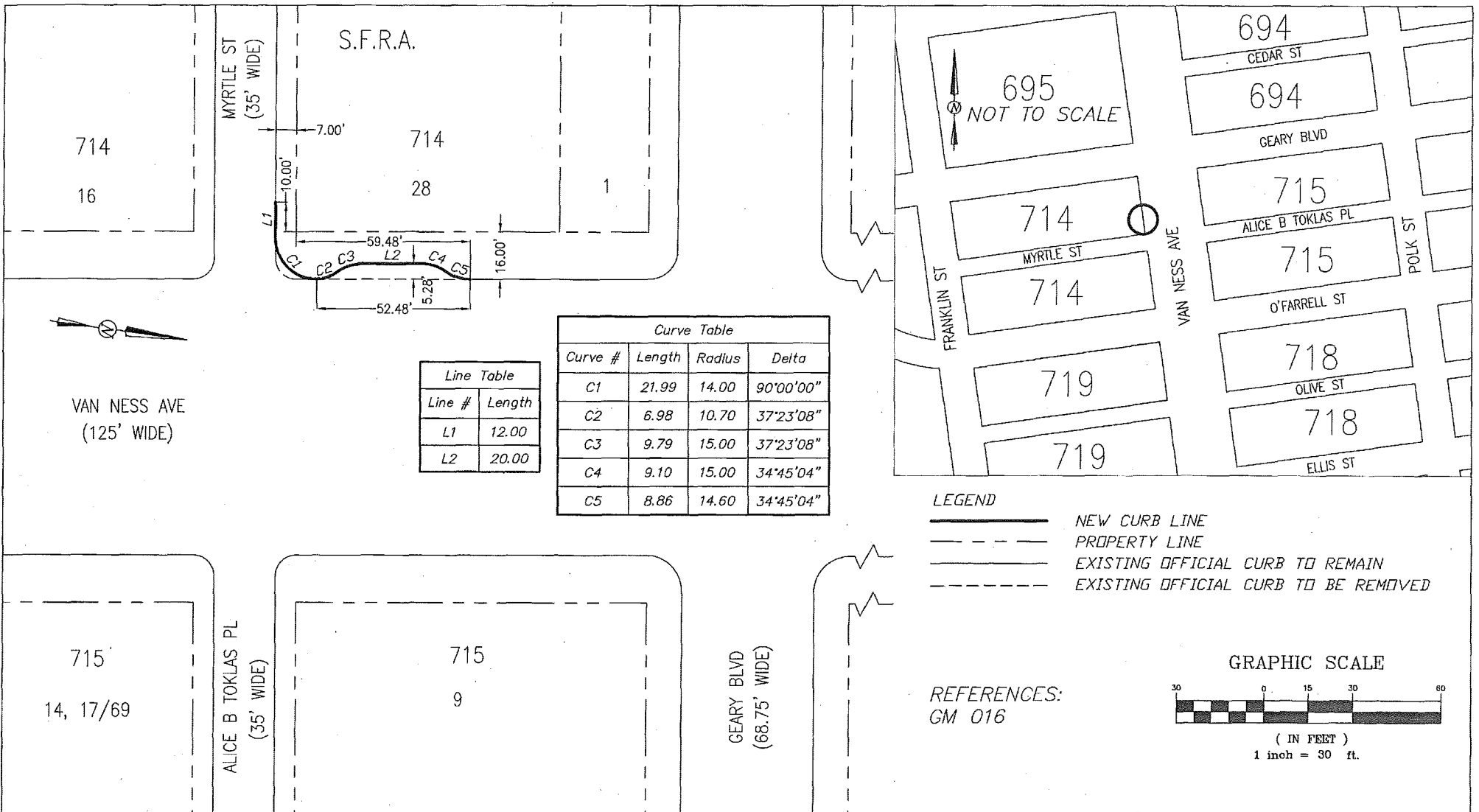
Bruce R. Storrs
 BRUCE R. STORRS
 CITY & COUNTY SURVEYOR

11/9/2015
 DATE

**CITY AND COUNTY OF SAN FRANCISCO
 DEPARTMENT OF PUBLIC WORKS**

OFFICIAL SIDEWALK CHANGE OF THE WESTERLY SIDE OF THE INTERSECTION OF VAN NESS AVENUE AND ELM STREET, FRONTING AB 0762 LOT 026,027,029/479

FILE: Q-20-817	SHEET 6 OF 15	SCALE: 1:40	CHANGE
-------------------	---------------	-------------	--------



S.F.R.A.

714
16

714
28

695
NOT TO SCALE

694

CEDAR ST

694

GEARY BLVD

715

ALICE B TOKLAS PL

715

O'FARRELL ST

718

OLIVE ST

718

ELLIS ST

714

714

719

719

MYRTLE ST
(35' WIDE)

VAN NESS AVE
(125' WIDE)

ALICE B TOKLAS PL
(35' WIDE)

GEARY BLVD
(68.75' WIDE)

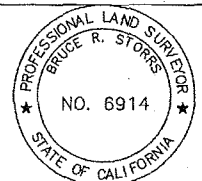
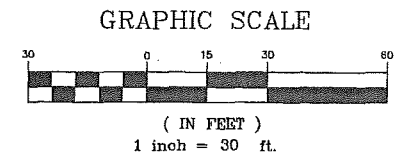
Line Table	
Line #	Length
L1	12.00
L2	20.00

Curve Table			
Curve #	Length	Radius	Delta
C1	21.99	14.00	90°00'00"
C2	6.98	10.70	37°23'08"
C3	9.79	15.00	37°23'08"
C4	9.10	15.00	34°45'04"
C5	8.86	14.60	34°45'04"

LEGEND

- NEW CURB LINE
- PROPERTY LINE
- EXISTING OFFICIAL CURB TO REMAIN
- EXISTING OFFICIAL CURB TO BE REMOVED

REFERENCES:
GM 016



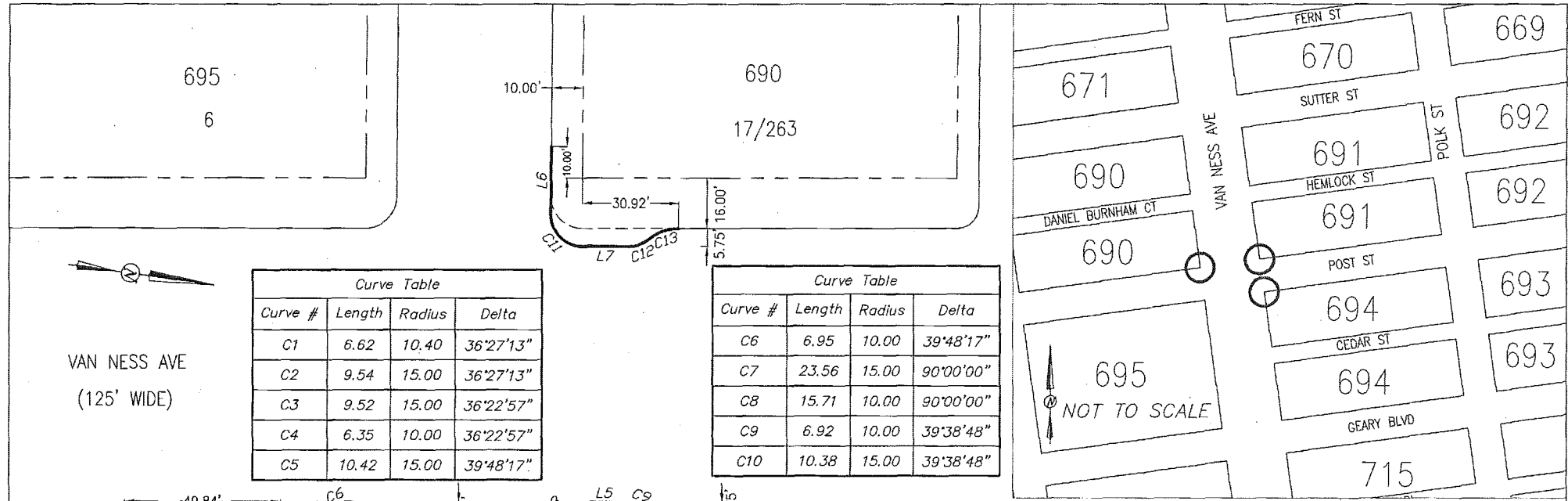
APPROVED:
Bruce R. Storrs
BRUCE R. STORRS
CITY & COUNTY SURVEYOR

11/9/2015
DATE

CITY AND COUNTY OF SAN FRANCISCO
DEPARTMENT OF PUBLIC WORKS

OFFICIAL SIDEWALK CHANGE OF THE NORTHWEST CORNER AT THE INTERSECTION OF VAN NESS AVENUE AND MYRTLE STREET, FRONTING AB 714 LOT 028.

FILE: Q-20-817 SHEET 7 OF 15 SCALE: 1:30 CHANGE

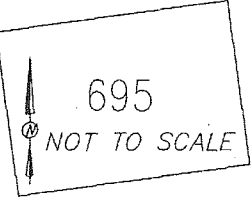


Curve Table

Curve #	Length	Radius	Delta
C1	6.62	10.40	36°27'13"
C2	9.54	15.00	36°27'13"
C3	9.52	15.00	36°22'57"
C4	6.35	10.00	36°22'57"
C5	10.42	15.00	39°48'17"

Curve Table

Curve #	Length	Radius	Delta
C6	6.95	10.00	39°48'17"
C7	23.56	15.00	90°00'00"
C8	15.71	10.00	90°00'00"
C9	6.92	10.00	39°38'48"
C10	10.38	15.00	39°38'48"



Line Table

Line #	Length
L1	19.91
L2	5.47
L3	16.78
L4	21.72
L5	15.09
L6	21.78
L7	15.00

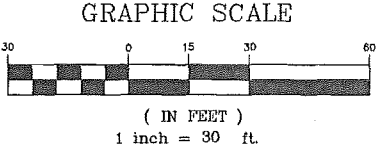
Curve Table

Curve #	Length	Radius	Delta
C11	15.71	10.00	90°00'00"
C12	6.92	10.00	39°38'48"
C13	10.38	15.00	39°38'48"

LEGEND

- NEW CURB LINE
- - - PROPERTY LINE
- EXISTING OFFICIAL CURB TO REMAIN
- - - EXISTING OFFICIAL CURB TO BE REMOVED

REFERENCES:
GM 016
GM 017



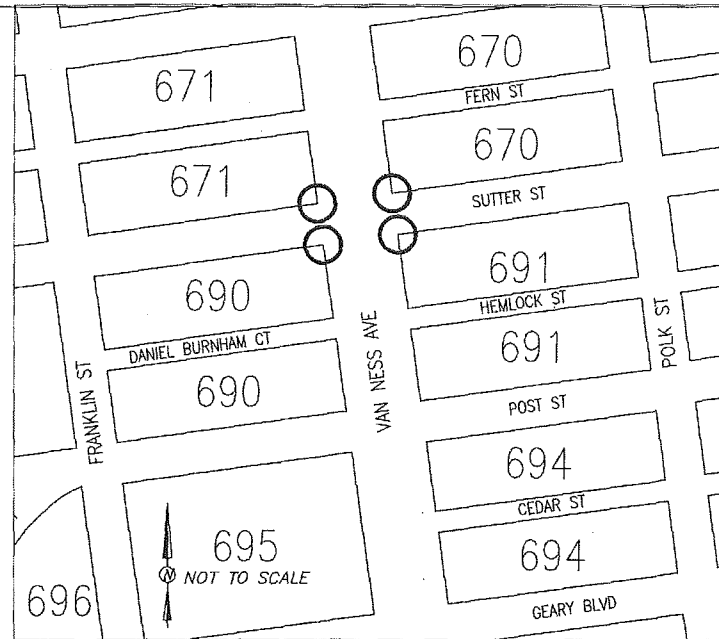
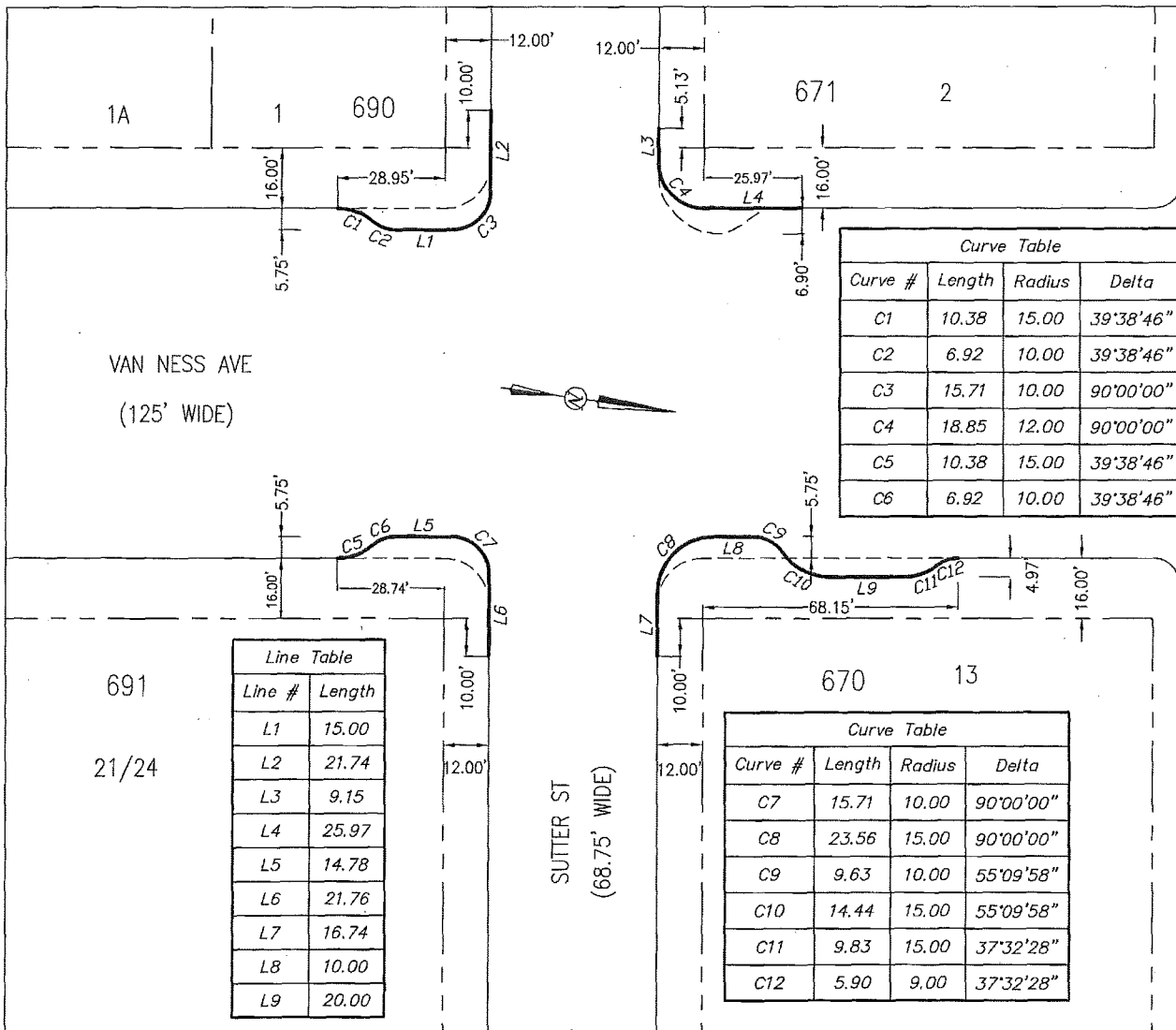
APPROVED:
Bruce R. Storrs
BRUCE R. STORRS
CITY & COUNTY SURVEYOR

11/9/2015
DATE

**CITY AND COUNTY OF SAN FRANCISCO
DEPARTMENT OF PUBLIC WORKS**

OFFICIAL SIDEWALK CHANGES OF THE INTERSECTION OF VAN NESS AVE AND POST STREET. THE NORTHWESTERLY CORNER FRONTS AB 690 LOT 17/263, THE NORTHEASTERLY CORNER FRONTS AB 691 LOT 005, AND THE SOUTHEASTERLY CORNER FRONTS 694 LOT 011.

FILE: Q-20-817 SHEET 8 OF 15 SCALE: 1:30 CHANGE

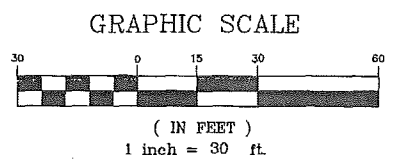


Curve #	Length	Radius	Delta
C1	10.38	15.00	39°38'46"
C2	6.92	10.00	39°38'46"
C3	15.71	10.00	90°00'00"
C4	18.85	12.00	90°00'00"
C5	10.38	15.00	39°38'46"
C6	6.92	10.00	39°38'46"

LEGEND

— NEW CURB LINE
 - - - PROPERTY LINE
 — EXISTING OFFICIAL CURB TO REMAIN
 - - - EXISTING OFFICIAL CURB TO BE REMOVED

REFERENCES:
GM 017



APPROVED:

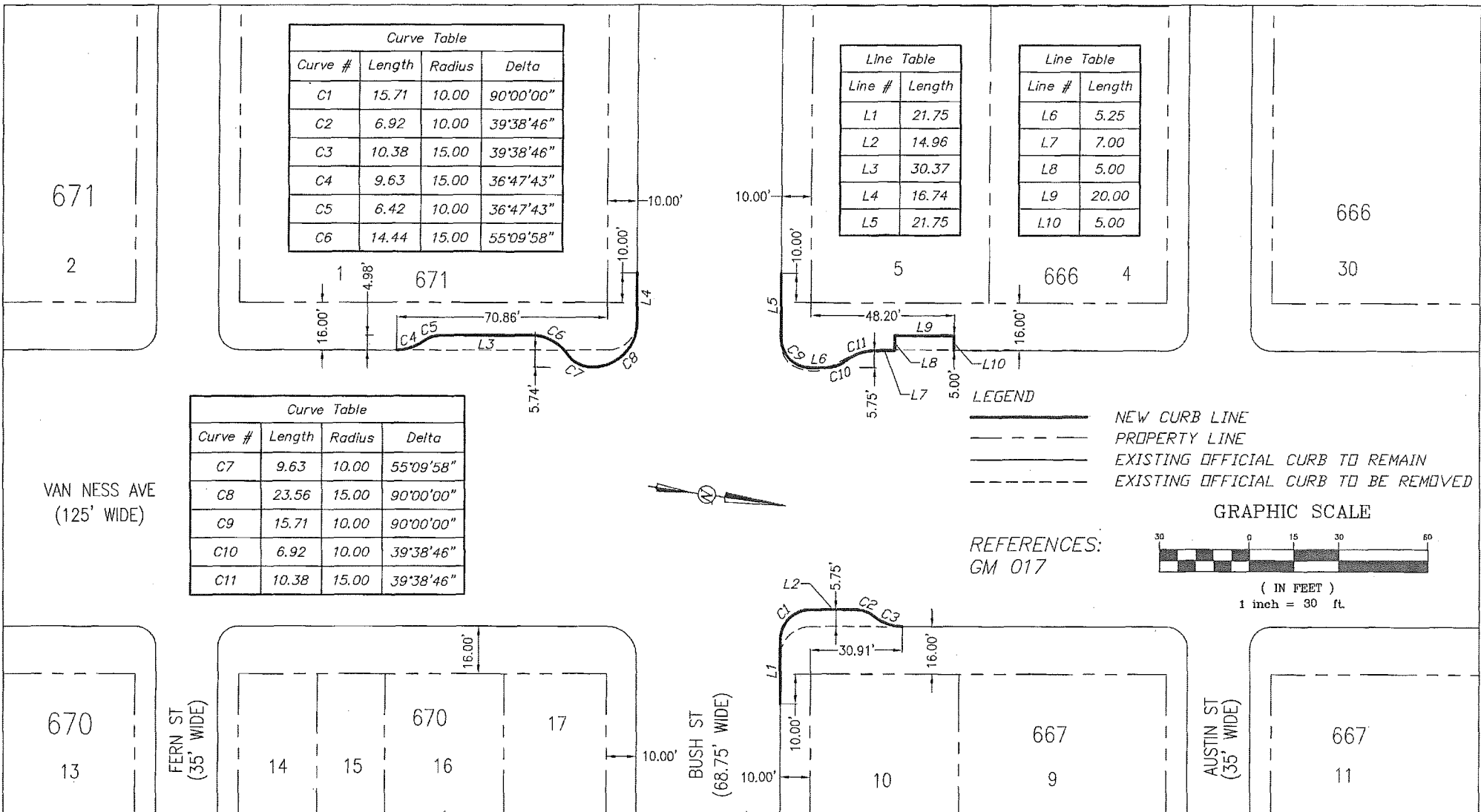
 BRUCE R. STORRS
 CITY & COUNTY SURVEYOR

11/9/2015
 DATE

CITY AND COUNTY OF SAN FRANCISCO
 DEPARTMENT OF PUBLIC WORKS

OFFICIAL SIDEWALK CHANGE OF THE FOUR CORNERS AT THE
 INTERSECTION OF VAN NESS AVENUE AND SUTTER STREET.

FILE: Q-20-817 SHEET 9 OF 15 SCALE: 1:30 CHANGE



Curve Table			
Curve #	Length	Radius	Delta
C1	15.71	10.00	90°00'00"
C2	6.92	10.00	39°38'46"
C3	10.38	15.00	39°38'46"
C4	9.63	15.00	36°47'43"
C5	6.42	10.00	36°47'43"
C6	14.44	15.00	55°09'58"

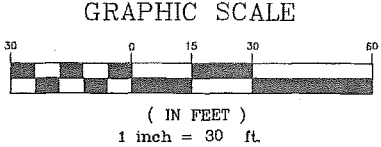
Line Table	
Line #	Length
L1	21.75
L2	14.96
L3	30.37
L4	16.74
L5	21.75

Line Table	
Line #	Length
L6	5.25
L7	7.00
L8	5.00
L9	20.00
L10	5.00

Curve Table			
Curve #	Length	Radius	Delta
C7	9.63	10.00	55°09'58"
C8	23.56	15.00	90°00'00"
C9	15.71	10.00	90°00'00"
C10	6.92	10.00	39°38'46"
C11	10.38	15.00	39°38'46"

LEGEND

- NEW CURB LINE
- PROPERTY LINE
- EXISTING OFFICIAL CURB TO REMAIN
- EXISTING OFFICIAL CURB TO BE REMOVED



REFERENCES:
GM 017

671

2

666

30

VAN NESS AVE
(125' WIDE)

670

13

FERN ST
(35' WIDE)

670

17

BUSH ST
(68.75' WIDE)

667

10

AUSTIN ST
(35' WIDE)

667

11

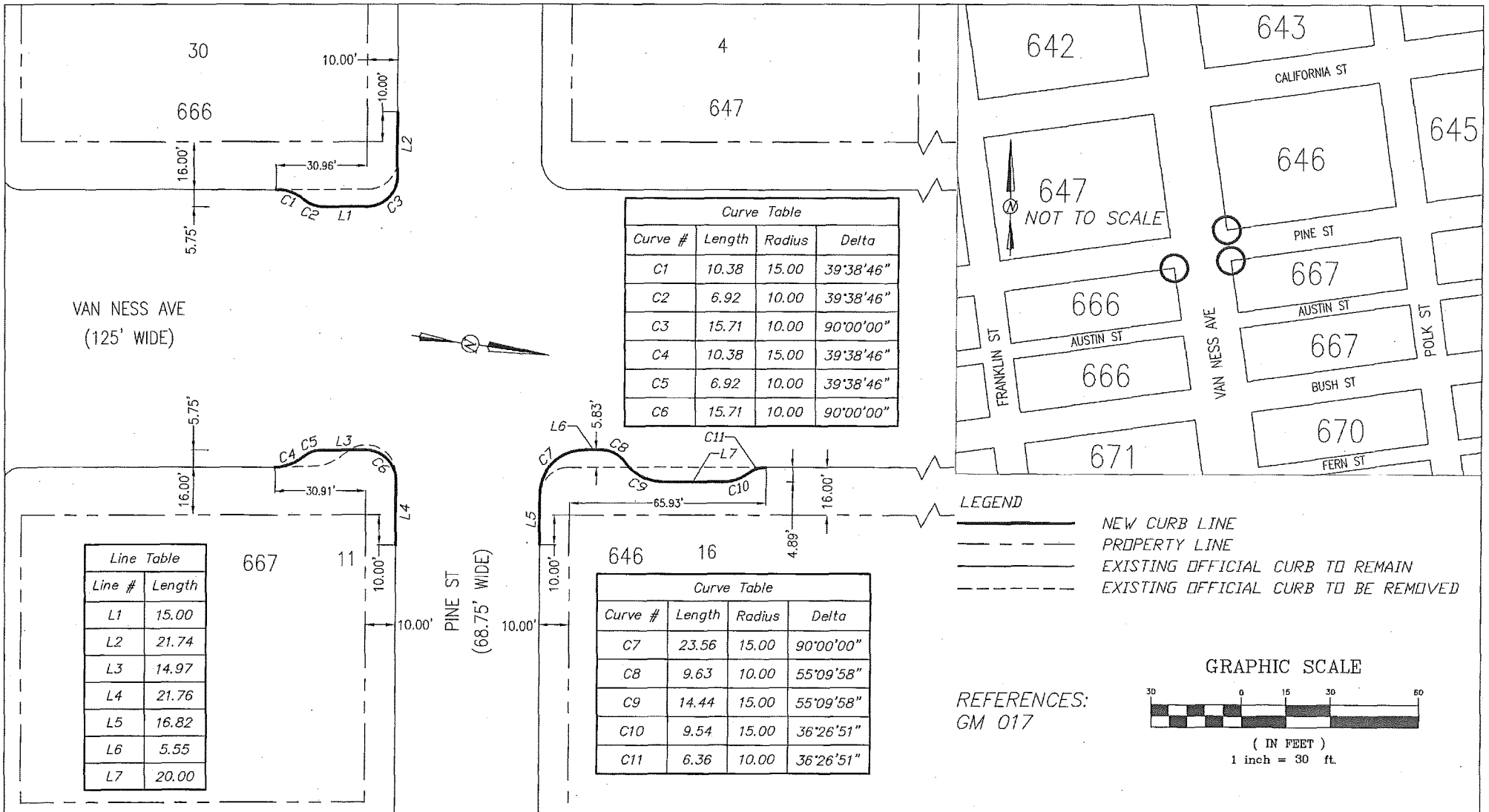


APPROVED:

BRUCE R. STORRS
CITY & COUNTY SURVEYOR

11/9/2015
DATE

CITY AND COUNTY OF SAN FRANCISCO
DEPARTMENT OF PUBLIC WORKS
OFFICIAL SIDEWALK CHANGE OF THE CORNERS AT THE INTERSECTION OF
VAN NESS AVE AND BUSH STREET.
FILE: Q-20-817 SHEET 10 OF 15 SCALE: 1:30 CHANGE



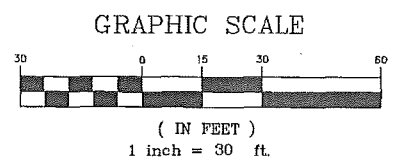
Curve Table			
Curve #	Length	Radius	Delta
C1	10.38	15.00	39°38'46"
C2	6.92	10.00	39°38'46"
C3	15.71	10.00	90°00'00"
C4	10.38	15.00	39°38'46"
C5	6.92	10.00	39°38'46"
C6	15.71	10.00	90°00'00"

Line Table	
Line #	Length
L1	15.00
L2	21.74
L3	14.97
L4	21.76
L5	16.82
L6	5.55
L7	20.00

Curve Table			
Curve #	Length	Radius	Delta
C7	23.56	15.00	90°00'00"
C8	9.63	10.00	55°09'58"
C9	14.44	15.00	55°09'58"
C10	9.54	15.00	36°26'51"
C11	6.36	10.00	36°26'51"

LEGEND

— NEW CURB LINE
 - - - PROPERTY LINE
 - - - EXISTING OFFICIAL CURB TO REMAIN
 - - - EXISTING OFFICIAL CURB TO BE REMOVED



REFERENCES:
 GM 017



APPROVED:

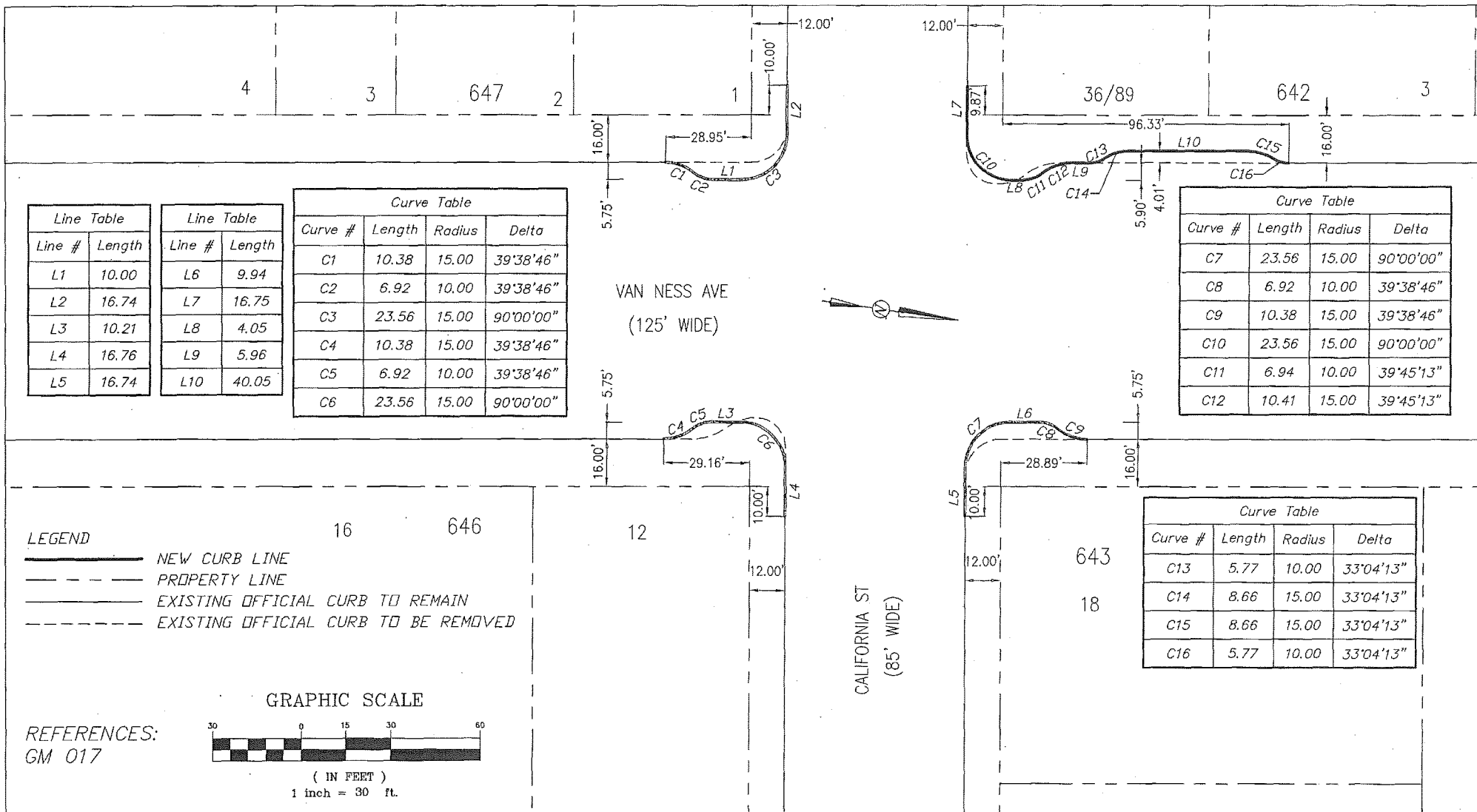
 BRUCE R. STORRS
 CITY & COUNTY SURVEYOR

11/9/2015
 DATE

CITY AND COUNTY OF SAN FRANCISCO
DEPARTMENT OF PUBLIC WORKS

OFFICIAL SIDEWALK CHANGE AT THE INTERSECTION OF VAN NESS AVE AND PINE ST. THE NORTHEASTERLY CORNER FRONTS AB 646 LOT 016, THE SOUTHWESTERLY CORNER FRONTS AB 666 LOT 30, AND THE SOUTHEASTERLY CORNER FRONTS AB 667 LOT 011.

FILE: Q-20-817 SHEET 11 OF 15 SCALE: 1:30 CHANGE



Line Table	
Line #	Length
L1	10.00
L2	16.74
L3	10.21
L4	16.76
L5	16.74

Line Table	
Line #	Length
L6	9.94
L7	16.75
L8	4.05
L9	5.96
L10	40.05

Curve Table			
Curve #	Length	Radius	Delta
C1	10.38	15.00	39°38'46"
C2	6.92	10.00	39°38'46"
C3	23.56	15.00	90°00'00"
C4	10.38	15.00	39°38'46"
C5	6.92	10.00	39°38'46"
C6	23.56	15.00	90°00'00"

Curve Table			
Curve #	Length	Radius	Delta
C7	23.56	15.00	90°00'00"
C8	6.92	10.00	39°38'46"
C9	10.38	15.00	39°38'46"
C10	23.56	15.00	90°00'00"
C11	6.94	10.00	39°45'13"
C12	10.41	15.00	39°45'13"

Curve Table			
Curve #	Length	Radius	Delta
C13	5.77	10.00	33°04'13"
C14	8.66	15.00	33°04'13"
C15	8.66	15.00	33°04'13"
C16	5.77	10.00	33°04'13"

LEGEND

- NEW CURB LINE
- PROPERTY LINE
- EXISTING OFFICIAL CURB TO REMAIN
- EXISTING OFFICIAL CURB TO BE REMOVED

GRAPHIC SCALE



(IN FEET)
1 inch = 30 ft.

REFERENCES:
GM 017



APPROVED:

Bruce R. Storrs
BRUCE R. STORRS
CITY & COUNTY SURVEYOR

11/9/2015
DATE

CITY AND COUNTY OF SAN FRANCISCO
DEPARTMENT OF PUBLIC WORKS

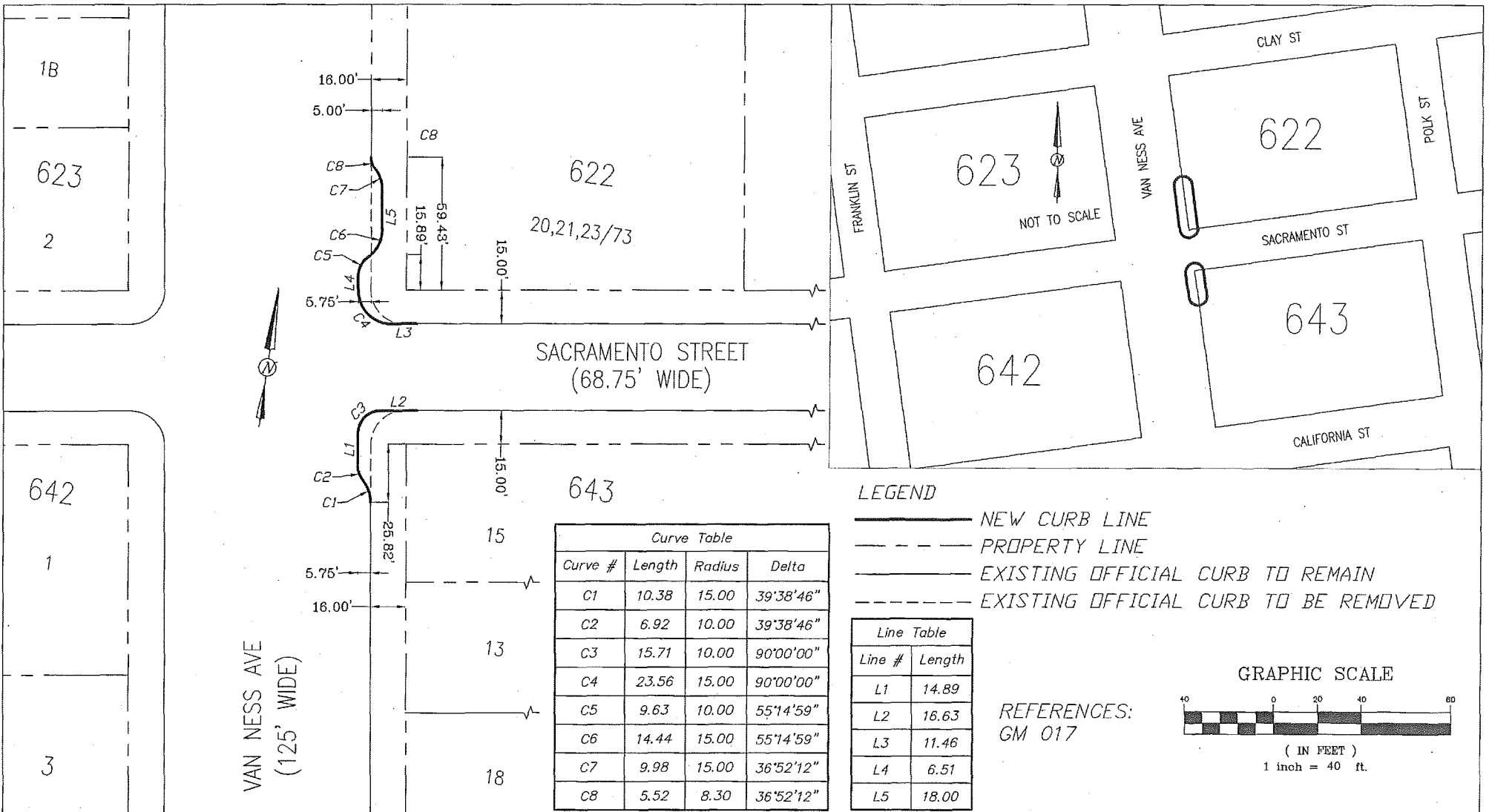
OFFICIAL SIDEWALK CHANGE OF THE CORNERS AT THE INTERSECTION OF
VAN NESS AVE AND CALIFORNIA ST.

FILE:
Q-20-817

SHEET 12 OF 15

SCALE: 1:30

CHANGE



622
20,21,23/73

623
NOT TO SCALE

622
CLAY ST
POLK ST
SACRAMENTO ST

642
FRANKLIN ST
VAN NESS AVE

643
CALIFORNIA ST

SACRAMENTO STREET
(68.75' WIDE)

VAN NESS AVE
(125' WIDE)

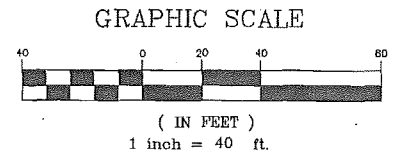
LEGEND

- NEW CURB LINE
- PROPERTY LINE
- EXISTING OFFICIAL CURB TO REMAIN
- EXISTING OFFICIAL CURB TO BE REMOVED

Curve Table			
Curve #	Length	Radius	Delta
C1	10.38	15.00	39°38'46"
C2	6.92	10.00	39°38'46"
C3	15.71	10.00	90°00'00"
C4	23.56	15.00	90°00'00"
C5	9.63	10.00	55°14'59"
C6	14.44	15.00	55°14'59"
C7	9.98	15.00	36°52'12"
C8	5.52	8.30	36°52'12"

Line Table	
Line #	Length
L1	14.89
L2	16.63
L3	11.46
L4	6.51
L5	18.00

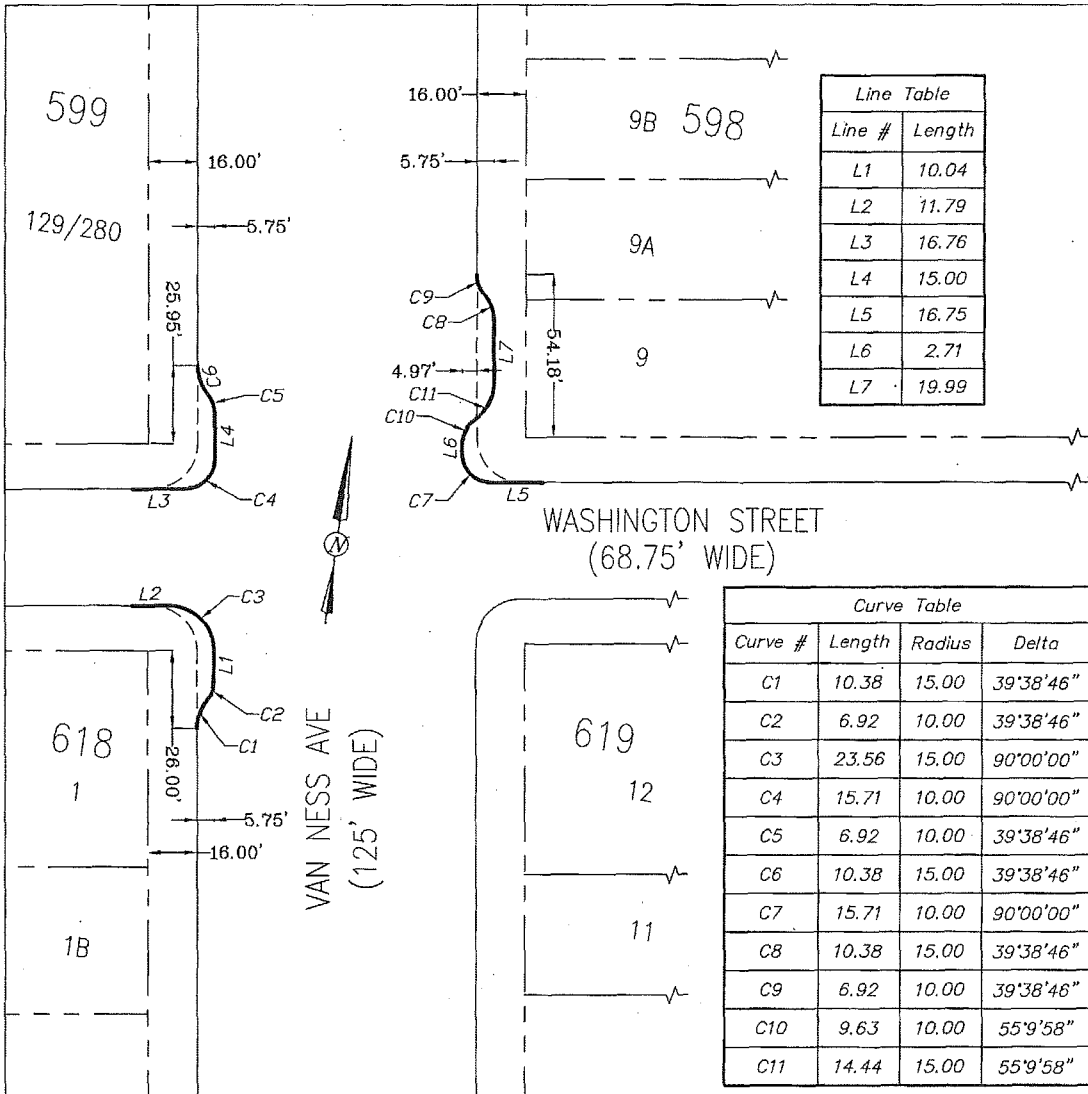
REFERENCES:
GM 017



APPROVED:

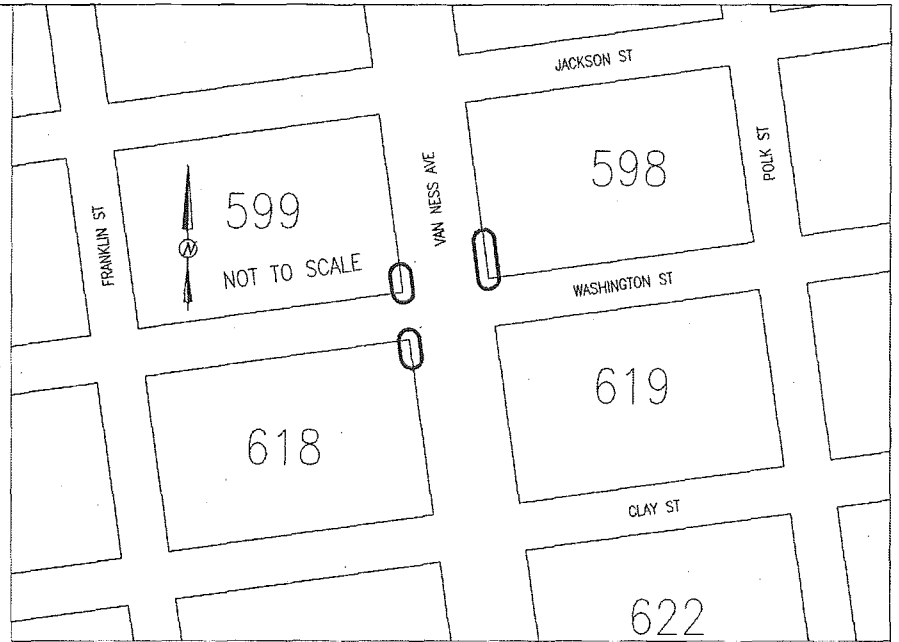
BRUCE R. STORRS
CITY & COUNTY SURVEYOR
DATE: 11/9/2015

CITY AND COUNTY OF SAN FRANCISCO
DEPARTMENT OF PUBLIC WORKS
OFFICIAL SIDEWALK CHANGE OF THE NORTHEAST AND SOUTHEAST CORNERS OF THE INTERSECTION OF VAN NESS AVENUE AND SACRAMENTO STREET, FRONTING AB 0622 LOT 020,021,023/073 AND AB 0643 LOT 015
FILE: Q-20-817 SHEET 13 OF 15 SCALE: 1:40 CHANGE



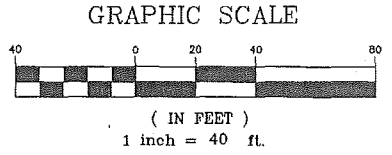
Line Table	
Line #	Length
L1	10.04
L2	11.79
L3	16.76
L4	15.00
L5	16.75
L6	2.71
L7	19.99

Curve Table			
Curve #	Length	Radius	Delta
C1	10.38	15.00	39°38'46"
C2	6.92	10.00	39°38'46"
C3	23.56	15.00	90°00'00"
C4	15.71	10.00	90°00'00"
C5	6.92	10.00	39°38'46"
C6	10.38	15.00	39°38'46"
C7	15.71	10.00	90°00'00"
C8	10.38	15.00	39°38'46"
C9	6.92	10.00	39°38'46"
C10	9.63	10.00	55°9'58"
C11	14.44	15.00	55°9'58"



LEGEND

- NEW CURB LINE
- PROPERTY LINE
- EXISTING OFFICIAL CURB TO REMAIN
- EXISTING OFFICIAL CURB TO BE REMOVED



REFERENCES:
GM 018



APPROVED:

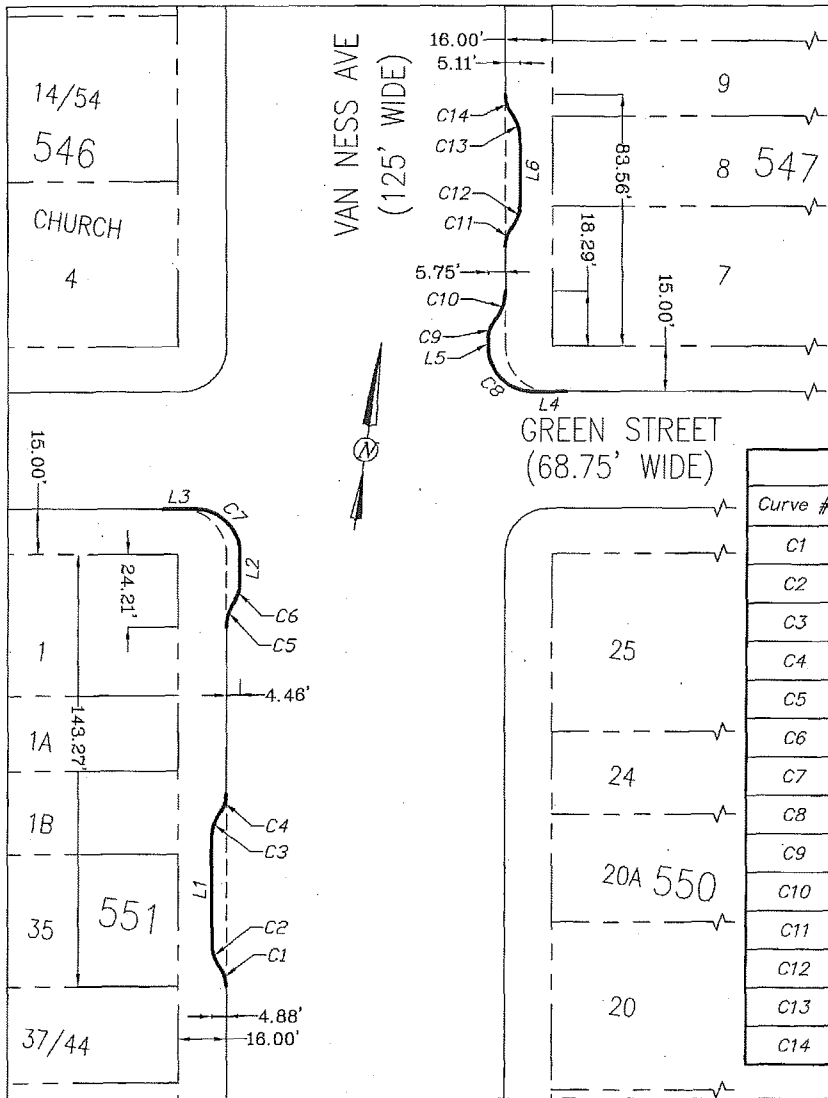
BRUCE R. STORRS
CITY & COUNTY SURVEYOR

11/9/2015
DATE

CITY AND COUNTY OF SAN FRANCISCO
DEPARTMENT OF PUBLIC WORKS

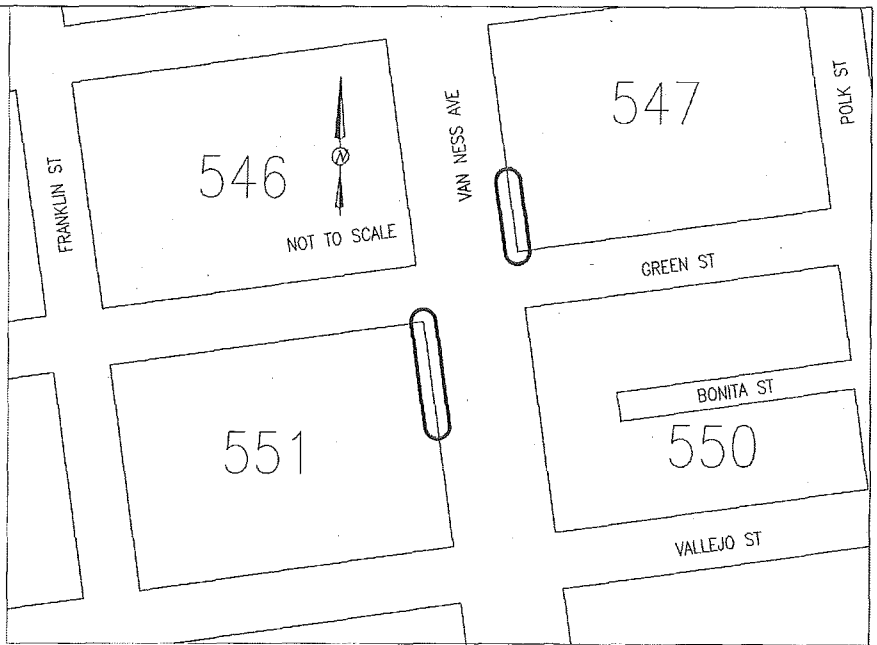
OFFICIAL SIDEWALK CHANGE OF THE NORTHEAST, NORTHWEST AND SOUTHWEST CORNERS OF THE INTERSECTION OF VAN NESS AVENUE AND WASHINGTON STREET, FRONTING AB 0598 LOT 009 AND 09A, AB 0599 LOT 129/280 AND AB 0618 LOT 001

FILE: Q-20-817	SHEET 14 OF 15	SCALE: 1:40	CHANGE
-------------------	----------------	-------------	--------



Line Table	
Line #	Length
L1	34.21
L2	10.12
L3	10.60
L4	11.68
L5	2.15
L6	20.00

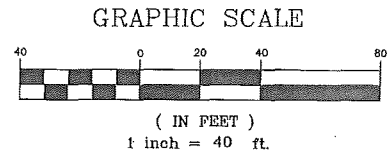
Curve Table			
Curve #	Length	Radius	Delta
C1	6.35	10.00	36°24'32"
C2	9.53	15.00	36°24'32"
C3	9.53	15.00	36°24'32"
C4	6.35	10.00	36°24'32"
C5	9.12	15.00	34°50'06"
C6	6.07	10.00	34°50'06"
C7	23.25	14.80	90°00'00"
C8	23.56	15.00	90°00'00"
C9	6.85	10.00	39°38'46"
C10	10.62	15.00	39°38'46"
C11	6.51	10.00	37°17'17"
C12	9.76	15.00	37°17'17"
C13	9.76	15.00	37°17'17"
C14	6.51	10.00	37°17'17"



LEGEND

- NEW CURB LINE
- PROPERTY LINE
- EXISTING OFFICIAL CURB TO REMAIN
- EXISTING OFFICIAL CURB TO BE REMOVED

REFERENCES:
GM 018



APPROVED:

BRUCE R. STORRS
CITY & COUNTY SURVEYOR

11/9/2015
DATE

**CITY AND COUNTY OF SAN FRANCISCO
DEPARTMENT OF PUBLIC WORKS**

OFFICIAL SIDEWALK CHANGE OF THE NORTHEAST AND SOUTHWEST CORNERS OF THE INTERSECTION OF VAN NESS AVENUE AND GREEN STREET, FRONTING AB 0547 LOT 007, 008, 009 AND AB 0551 LOT 001, 01B, 035

FILE:
Q-20-817

SHEET 15 OF 15

SCALE: 1:40

CHANGE