


**LEGEND:**

- POB POINT OF BEGINNING
- POC POINT OF COMMENCEMENT
- TPOB TRUE POINT OF BEGINNING
- (R) RADIAL
- O.R. OFFICIAL RECORDS
-  STREET VACATION AREA



**BASIS OF BEARING:**

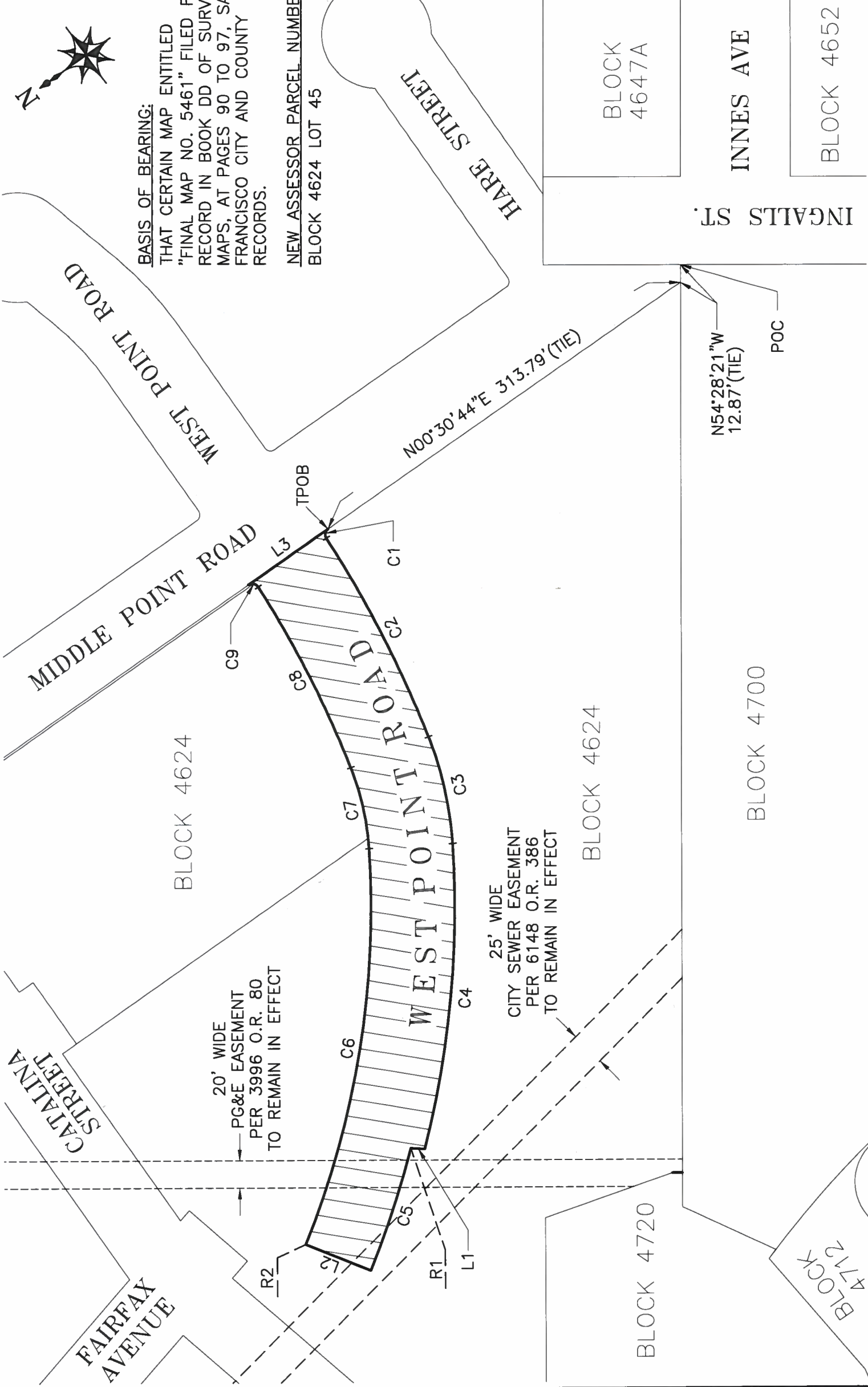
THAT CERTAIN MAP ENTITLED "FINAL MAP NO. 5461" FILED FOR RECORD IN BOOK DD OF SURVEY MAPS, AT PAGES 90 TO 97, SAN FRANCISCO CITY AND COUNTY RECORDS.

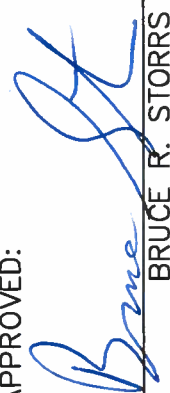
NEW ASSESSOR PARCEL NUMBER  
BLOCK 4624 LOT 45

| RADIAL BEARING TABLE |             |         |
|----------------------|-------------|---------|
| RADIAL               | BEARING     | RADIUS  |
| L1                   | S50°00'47"W | 708.00' |
| L2                   | S57°37'02"W | 657.00' |

| LINE TABLE |             |          |
|------------|-------------|----------|
| LINE #     | BEARING     | DISTANCE |
| L1         | N38°12'41"E | 10.21'   |
| L2         | N57°38'32"E | 51.00'   |
| L3         | S0°30'44"W  | 71.07'   |

| CURVE TABLE |         |           |         |  |
|-------------|---------|-----------|---------|--|
| CURVE #     | RADIUS  | DELTA     | LENGTH  |  |
| C1          | 5.00'   | 87°37'14" | 7.65'   |  |
| C2          | 838.00' | 11°09'42" | 163.25' |  |
| C3          | 257.00' | 17°50'18" | 80.01'  |  |
| C4          | 718.00' | 17°57'17" | 225.00' |  |
| C5          | 708.00' | 7°36'22"  | 93.99'  |  |
| C6          | 657.00' | 25°43'32" | 294.99' |  |
| C7          | 196.00' | 17°50'18" | 61.02'  |  |
| C8          | 777.00' | 10°56'34" | 148.40' |  |
| C9          | 5.00'   | 92°35'54" | 8.08'   |  |



|  |                                   |                                   |  |
|--|-----------------------------------|-----------------------------------|--|
| <b>CITY AND COUNTY OF SAN FRANCISCO</b>                |                                   | <b>DEPARTMENT OF PUBLIC WORKS</b> |  |
| <b>STREET VACATION OF A PORTION OF WEST POINT ROAD</b> |                                   |                                   |  |
| REFERENCES:  | DD MAPS 90-97<br>SUR MAP NO. 1009 | APPROVED:                         | <br>BRUCE R. STORRS<br>CITY & COUNTY SURVEYOR |
|  |                                   | DATE                              | 12/18/13   |
|  |                                   | DRAWN                             | PJ   |
|  |                                   | CHECKED                           |  |
|  |                                   | APPROVED                          |  |
|  |                                   | BY                                |  |
|  |                                   | DATE                              | 12/18/13   |
|  |                                   | SCALE:                            | 1"=80'   |
|  |                                   | SHEET:                            | 1 OF 1   |
|  |                                   | FILE                              | SUR 2013-02  |
|  |                                   | CHANGE                            |  |