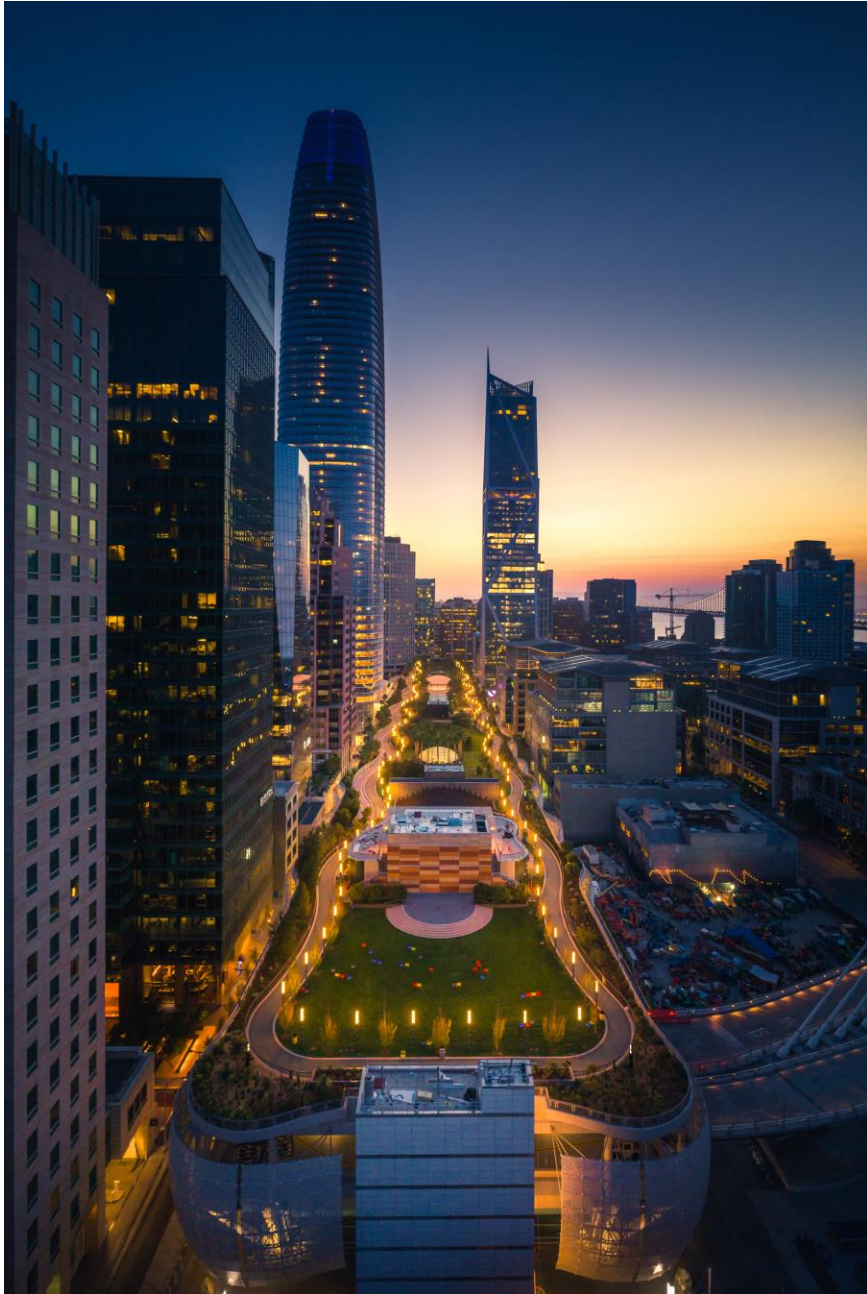


OEWD Budget Update

Presented by Sarah Dennis Phillips,
Executive Director

June 12, 2025





MISSION STATEMENT & GOALS

The Office of Economic and Workforce Development advances equitable & shared prosperity for San Franciscans by growing sustainable jobs, supporting businesses of all sizes, creating great places to live and work, and helping everyone achieve economic self-sufficiency.

- Facilitate a resilient, diverse, and robust economy where businesses can start, stay, and grow in San Francisco
- Create and connect residents to good jobs and strong career pathways
- Support vibrant neighborhoods by strengthening small businesses and community organizations
- Create spaces for jobs, housing, recreation, and public use

OUTCOMES & PERFORMANCE MEASURES



Employment Assistance

Enrolled 5,121 job seekers in employment assistance and training programs*

Workforce Development Performance Measures

Clients receiving
workforce
services

Clients
who completed
training

Clients
placed into
employment



Small Business Support

3,881 small businesses & entrepreneurs are supported through grants, loans, and technical assistance*

Economic Development Performance Measures

Clients
receiving
technical
assistance

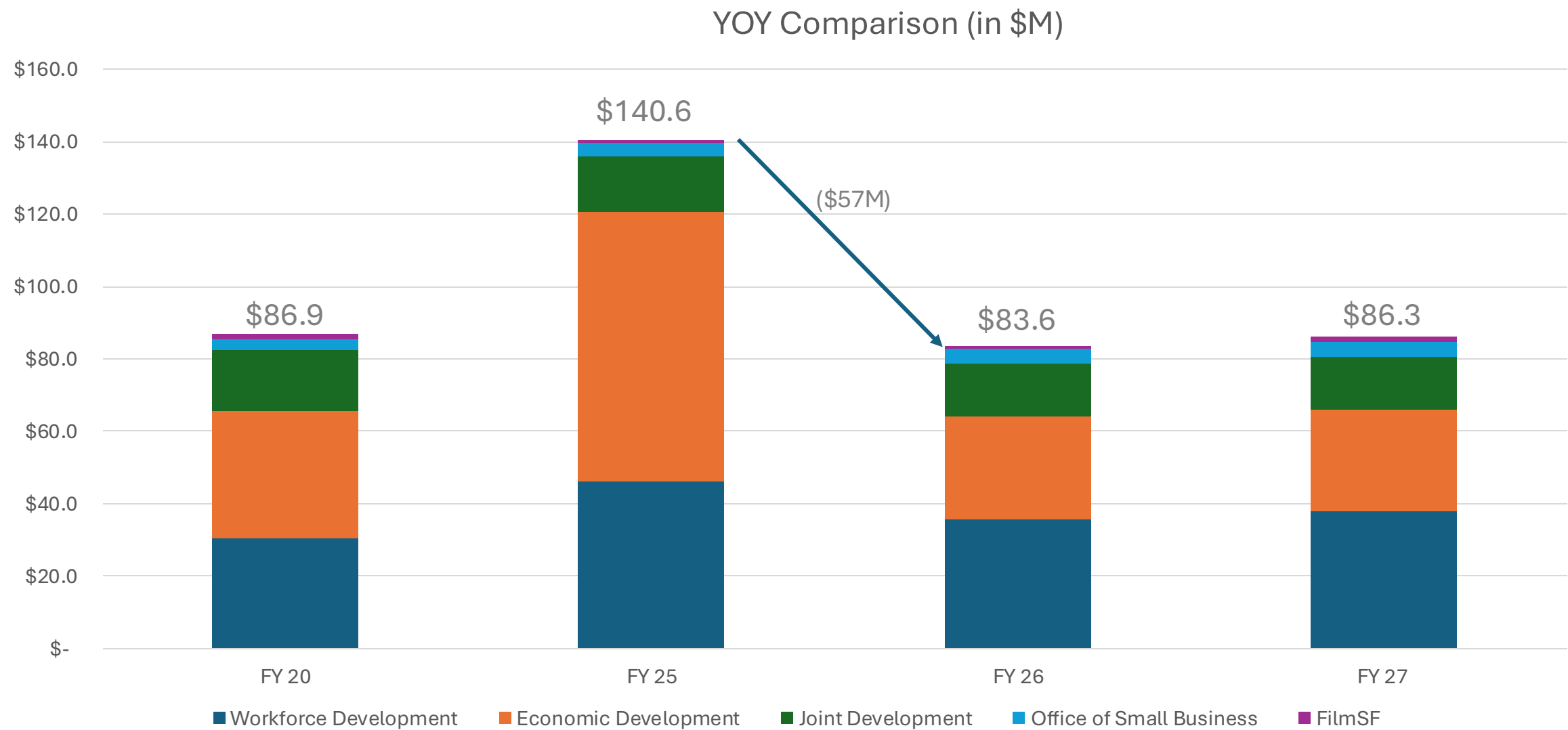
Number of small
businesses
showing positive
revenue**

Number of
new
businesses
registered

Amount of
capital awarded
to small
businesses

*Fiscal Year Data as of March 31, 2025 **Proposed new performance measure

BUDGETARY OVERVIEW & BASELINE INVESTMENTS



BUDGETARY OVERVIEW & BASELINE INVESTMENTS

Division	FY 2024-2025	FY 2025-2026	Change from FY 2024-2025	FY 2026-2027	Change from FY 2025-2026
Economic Development	\$ 74.6M	\$ 28.4M	\$ (46.2)M	\$ 27.9M	\$ (0.5)M
Film SF	\$ 0.9M	\$ 0.9M	\$ 0.0M	\$ 1.5M	\$ 0.6M
Office of Small Business	\$ 3.8M	\$ 3.9M	\$ 0.1M	\$ 4.2M	\$ 0.3M
Joint Development	\$ 15.2M	\$ 14.8M	\$ (0.4)M	\$ 14.7M	\$ (0.1)M
Workforce Development	\$ 46.1M	\$ 35.6M	\$ (10.5)M	\$ 38.0M	\$ 2.4M
TOTAL	\$ 140.6M	\$ 83.6M	\$ (57.0)M	\$ 86.3M	\$ 2.7M

OEWD INCUBATED INITIATIVES



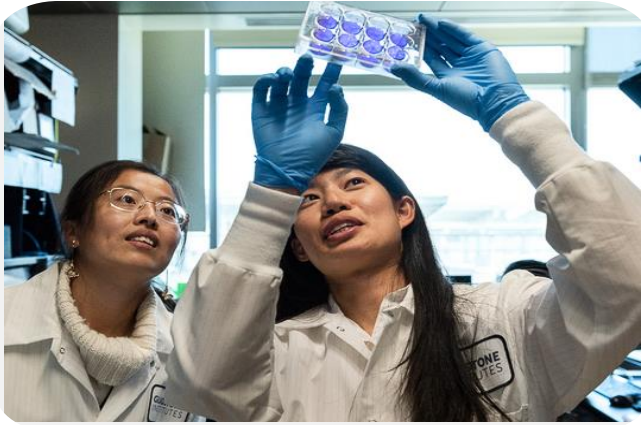
- **AMBASSADOR PROGRAMS**
OEWD developed, launched, and incubated the Tenderloin Community Safety Ambassador, Welcome Ambassador Program, and other neighborhood-based programs. OEWD facilitated approx. \$82M over 3 years, and programs are now transferring to DEM.
- **DOWNTOWN INVESTMENTS**
OEWD supported programs including Vacant to Vibrant, Downtown Events and Activations, and Capital Improvements. OEWD facilitated \$39.5M over 4 years, OEWD will work with partners to raise philanthropic investments.
- **BIG BELLY TRASH RECEPTACLES**
OEWD funded approx. \$1.5M over 6 years to install and maintain approx. 133 Big Belly trash receptacles. DPW will now be taking on the installation and management of receptacles.

DREAM KEEPER INITIATIVE

- **\$5.2M – WORKFORCE DEVELOPMENT**
OEWD will invest \$5.2M into workforce development programs focused in the following sectors:
Education, Healthcare, Hospitality, and industries of opportunity. OEWD estimates serving over 265 clients.
- **\$1.5M – COMMUNITY ECONOMIC DEVELOPMENT**
OEWD will invest \$1.5M into ScaleUpSF a program focused on growth of businesses that have operated in SF for at least 2 years. OEWD estimates serving 75 clients through the program.
- **\$2.3M – DKI PERSONNEL**
OEWD funds 11 FTEs throughout the organization



CORE PROGRAMS AND SERVICES



BUSINESS DEVELOPMENT

OEWD will focus on **business attraction & retention, helping businesses of all sizes start, stay, & grow in San Francisco**. Our sector-based approach will connect them with opportunities, incentives, & resources.



OFFICE OF SMALL BUSINESS

OEWD will continue to provide 1:1 services through the Small Business Assistance & Permit Centers. **Programs like Legacy Business and First Year Free will continue.**



COMMUNITY ECONOMIC DEVELOPMENT

In partnership with neighborhood economic development organizations, OEWD will **focus on supporting small businesses in neighborhood commercial districts.**

CORE PROGRAMS AND SERVICES



WORKFORCE DEVELOPMENT

OEWD will continue to support job centers, sector training programs, and employer services. [City Build Training Programs and Compliance](#) will continue to be supported.

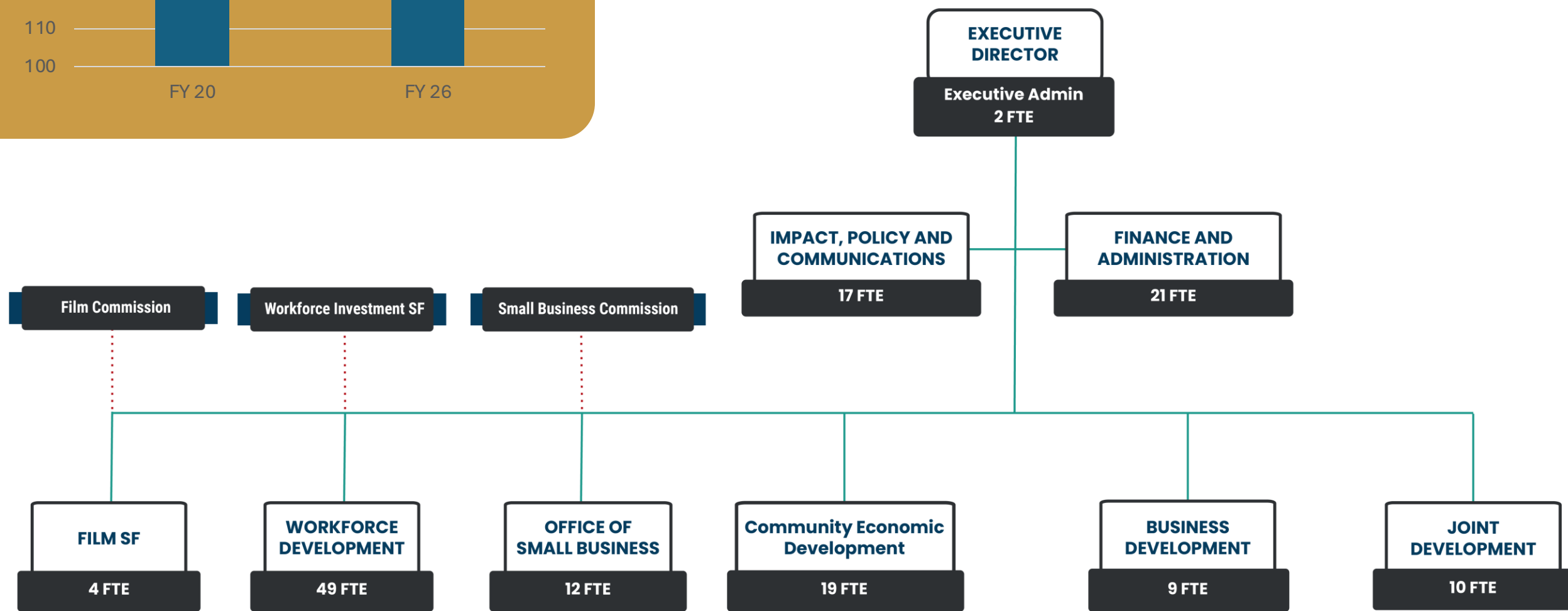
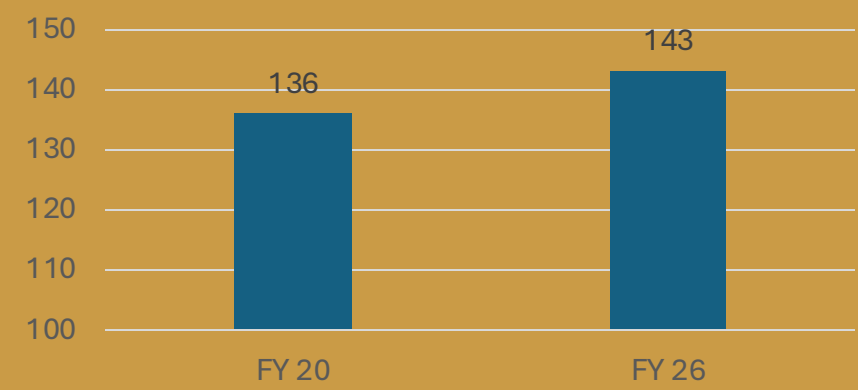


JOINT DEVELOPMENT

OEWD will continue to [support and advance development](#) in San Francisco, focusing on housing, commercial, and public open spaces, [through negotiations and legislation](#).

Organization Chart

FTE Comparison



THANK YOU



owd@sfgov.org



owd.org



415-554-6969