

Bed Expansion Plan

San Francisco Department of Public Health

Behavioral Health Services and Mental Health SF

A presentation to the Board of Supervisors Budget & Finance Committee

March 2, 2022

David Pating, MD

MHSF New Beds & Facilities

Kelly Kirkpatrick

MHSF Director of Administration & Operations

Hillary Kunins, MD, MPH, MS

Director of Behavioral Health Services and Mental Health SF



San Francisco Health Network
Behavioral Health Services

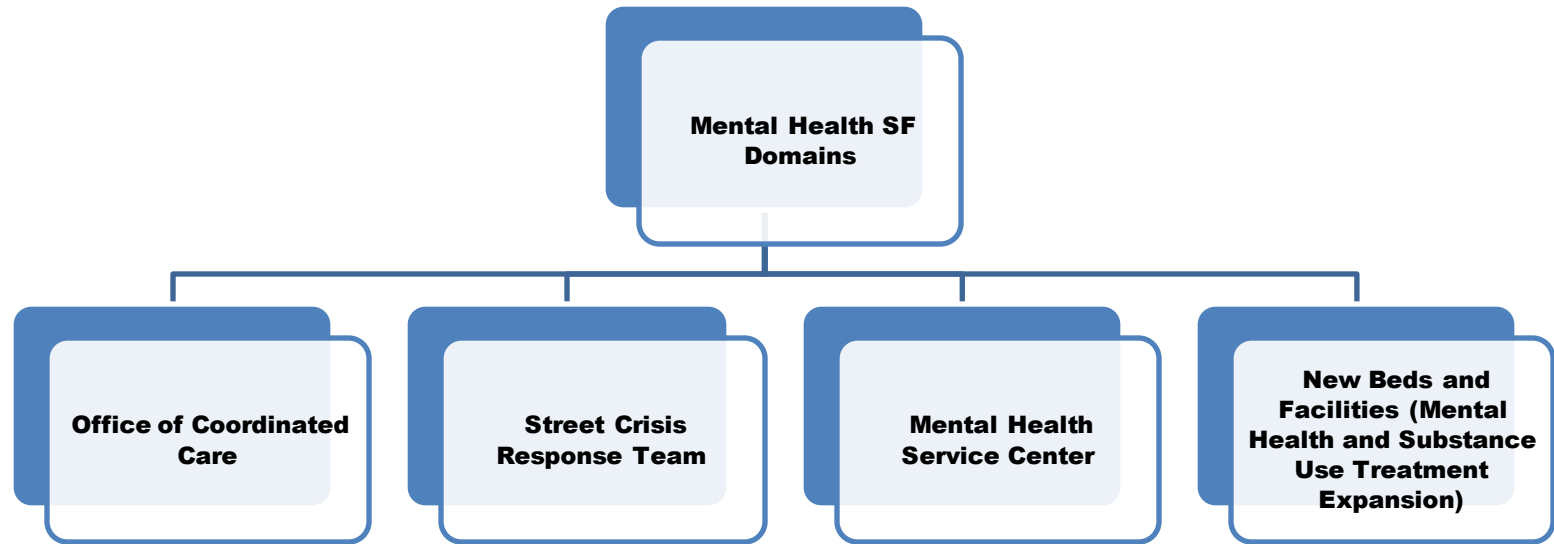
Agenda

1. Overview of the bed expansion plan
2. Current status
3. Challenges and barriers
4. Next steps



San Francisco Health Network
Behavioral Health Services

Mental Health SF Domains



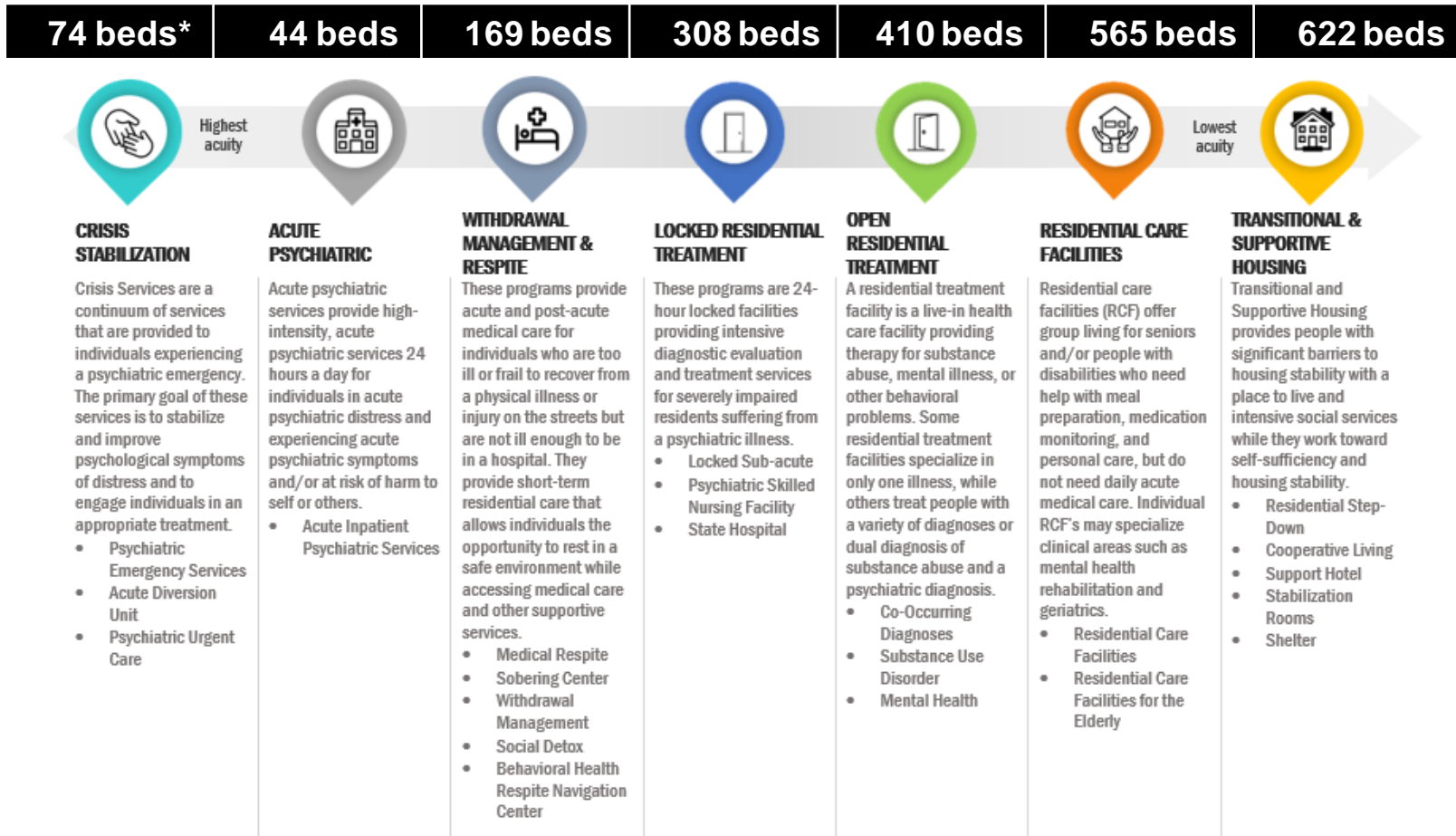
Residential Care and Treatment

New Beds and Facilities	Residential System of Care
Add 400 new beds under MHSF	Maintain current portfolio of 2,200 pre-existing beds
<ul style="list-style-type: none">• Expand <u>existing</u> programs• Create <u>new</u> types of treatment programs	<ul style="list-style-type: none">• Monitor access & timeliness• Oversee quality improvement• Operate new programs



BHS Residential Care Continuum – Baseline

DPH manages ~2,200 residential care and treatment beds along a continuum of acuity.



San Francisco Health Network
Behavioral Health Services

*Bed count as of December 2020 before MHSF launched.

New MHSF beds are tracked on the BHS Bed Expansion Dashboard

New Behavioral Health Bed Expansion

DPH identified a need to expand supply of BHS residential care and treatment beds by approximately 400 new beds based upon:

- Bed Optimization Report – Published in 2020
- Mental Health SF Legislation
- Proposition C – Our City, Our Home funding
- Bed usage and the availability of beds

Optimizing our bed supply is a dynamic and on-going process...



Behavioral Health Bed Optimization Report*

DPH enlisted Mosimtec to conduct a comprehensive bed simulation based upon 25,000 admissions to Urgent Care, SUD and Mental Health in FY18-19.

Q. How many Behavioral Health beds are needed to maintain consistent patient flow for adult clients in San Francisco with zero wait time?

Bed Category	Recommended Expansion
Locked Subacute Treatment	31
Psychiatric Skilled Nursing Facility	13
Residential Care Facilities (Board and Care)	31
Residential Care Facilities for the Elderly	22
Mental Health Residential Treatment (12-month)	20



Mental Health SF Legislation

“... expand the following types of residential treatment options across the continuum of care to meet identified needs:”

1. Mental health urgent care
2. Drug sobering center
3. Crisis residential treatment services
4. Secure inpatient hospitalization and locked wards
5. Transitional residential treatment bed
6. Long-term supportive housing and adult residential facilities (also known as “board & care homes”)



Real Time and Future Assessment

Goal: How many beds are required to optimize patient flow, i.e.

"To provide the right care at the right time and right place."

Real Time:

1. Measure bed capacity and utilization through Findtreatment-SF.org
2. Monitor inpatient psychiatry census
3. Standardized quality metrics (access, service, timeliness, etc.)

Bed Optimization Study:

1. Next Bed Optimization Report – Estimated December 2022



BHS Residential Bed Expansion Dashboard

DPH Behavioral Health Residential Treatment Expansion

The San Francisco Department of Public Health (DPH) is increasing residential treatment and care services by approximately 400 overnight treatment spaces, or beds. The expansion effort is guided by the 2020 DPH Behavioral Health Bed Optimization Report, Mental Health SF legislation, and with input from stakeholders. The goal is to offer high quality, timely, easily accessible, coordinated, and recovery-oriented care delivered in the least restrictive setting.

Goal 30 Beds	Open 2021 Hummingbird - Valencia Status Serving clients Open 28 beds currently available	Psychiatric respite facility to serve people experiencing homelessness from the Mission and Castro
Goal 20 Est. Beds	Open 2020 Managed Alcohol Program Status Permanent location and additional funding will expand the program from 10 beds to 20 beds Open 10 beds currently available	Pilot Medical supervision for people with chronic alcohol dependency in a permanent supportive housing setting
Goal 20 Beds	Open 2021 12-month Rehabilitative Board and Care Status Accepting placements Open	Pilot Out-of-county supervised living and treatment for people with chronic mental health illness and/or coming from locked facilities
Goal 31 Est. Beds	Open 2021 Mental Health Rehabilitation Beds (aka LSAT) Status Serving Clients Open	Out-of-county psychosocial rehabilitation for people who are conserved in a locked setting
Goal 13 Est. Beds	Open 2021 Psychiatric Skilled Nursing Facilities (aka PSNF) Status Contract complete; reviewing client applications 1 2 3 4 / /	Out-of-county secure 24-hour medical care for people with chronic mental health conditions
Goal 6 Est. Beds	Open 2022 Cooperative Living for Mental Health^Δ Status Accepting applications 1 2 3 4 / /	Communal living for people with chronic mental health and/or substance use Additional \$11M to stabilize leased properties available through MOHCD

KEY

February 23, 2022

Project Phases and Status		Complete In process Planned
Δ MHSF legislation 1 Program design 2 Regulatory assessment 3 Facility selection	4 Out for bid/contracting 5 Community outreach & City approvals 6 Permit & construction	

Goal 20 Est. Beds	Open Spring 2022 SOMA RISE^Δ (aka Drug Sobering Center) Status Initiating construction 1 2 3 4 5 6	Pilot 24-7 program for people experiencing homelessness with drug intoxication, providing short term stays and linkage to services
Goal 73 Est. Beds	Opening date to be determined Residential Care Facility^Δ (aka Board and Care)* Status Active negotiations to acquire a building 1 2 3 4 5 6	Supervised residential program for individuals with mental health issues who require assistance with activities of daily living.
Goal 140 Est. Beds	Opening date to be determined Residential Step-down - SUD^Δ Status Active negotiations to acquire a building 1 2 3 4 5 6	Long-term sober living environment for clients coming out of residential care programs
Goal 30 Est. Beds	Opening date to be determined Enhanced Dual Diagnosis^Δ Status Program design in development 1 2 3 4 / /	Transitional medically enhanced care for people with a dual diagnosis of mental health and substance use issues
Goal 10 Est. Beds	Opening date to be determined Transitional Age Youth (TAY) Residential Treatment^Δ Status Program design in development 1 2 3 4 5 6	Supervised treatment for young adults with serious mental health and/or substance use issues
Goal 15 Est. Beds	Opening date to be determined Crisis Diversion Facility^Δ Status Program design in development 1 2 3 4 5 6	Short-term, urgent care intervention as an alternative to hospital care



San Francisco Health Network
Behavioral Health Services

New Beds – Open

- Residential care and treatment spaces have expanded by **89 new beds** of the total ~400 new spaces that are planned under New Beds & Facilities, which is nearly 25% of the goal.
- SoMa RISE (Drug Sobering Center) building permits are in process and final operational planning with CBO contractor is underway – opening spring 2022 with **approximately 20 beds.**
- In December 2021, the Board of Supervisors approved the purchase of 822 Geary Street and 629 Hyde Street, which could potentially be the location for up to **15 Crisis Diversion beds.**



Opening New Programs

Two main routes to adding additional bed capacity:

1. Purchase and rehabilitation of a facility; contracting for services and/or hiring DPH staff to operate.
2. Contracting for services through providers inside and outside of the county.



Building New Beds – Progress

- Actively pursuing multiple buildings for acquisition to support expansion for Residential Step-Down, Board & Care, and Managed Alcohol Program expansion services in-county.
 - Currently in various stages of:
 - Real estate negotiations
 - Property assessments
 - Pre-development discussions
- Developing an RFP/RFQ that will support a collaborative approach to expanding bed types with contracted partners for services and/or facility procurement, including Dual Diagnosis, Transitional Age Youth (TAY), Crisis Stabilization Unit, and Residential Step-down.



Contracting for New Beds – Progress

Plans to expand contracting for additional beds this Fiscal Year (21-22):

- 20 additional 12-Month Rehabilitative Board & Care
- 20 Board & Care beds
- 13 Psychiatric Skilled Nursing Facility (PSNF) beds to meet our goal
- Looking for additional opportunities to contract for beds both inside of the county and outside of county in the short-term while we work to build additional capacity in-county in the long-term.



Barriers to Opening New Programs

Building new residential care and treatment beds in-county is a multi-step process, and it can take up to 1.5 to 3 years to build and open a new facility.

- Program design
- Regulatory assessment
- Facility selection
- Out for bid/contracting
- Community outreach & city approvals
- Permit & construction
- State licensing, if applicable



Staffing Support

Additional staffing resources are underway to support 400 new beds under New Beds & Facilities and the Residential System of Care to support the 2,200 existing beds:

- Additional position at Real Estate Division to support DPH new building acquisition is being hired
- Hiring for 4 staff at DPH to support the project management of New Beds & Facilities is in process
- Proposed Residential System of Care staffing in DPH budget to manage the 2,200 existing beds – transitions, placements, vendor relationship/negotiation, and care management



Next Steps

Target: July 2022

- Pursue contracting for available Board & Care, 12-Month Rehabilitative Board & Care, Psychiatric Skilled Nursing beds both within and outside of county.

Target: December 2022

- Analysis for next Bed Optimization Report

Target: Mid-year 2023

- Design and Build the Crisis Stabilization Unit and a new Residential Step-down facility

On-going

- Explore opportunities for projects when new residential care services or facilities become available.



Questions?



San Francisco Health Network
Behavioral Health Services