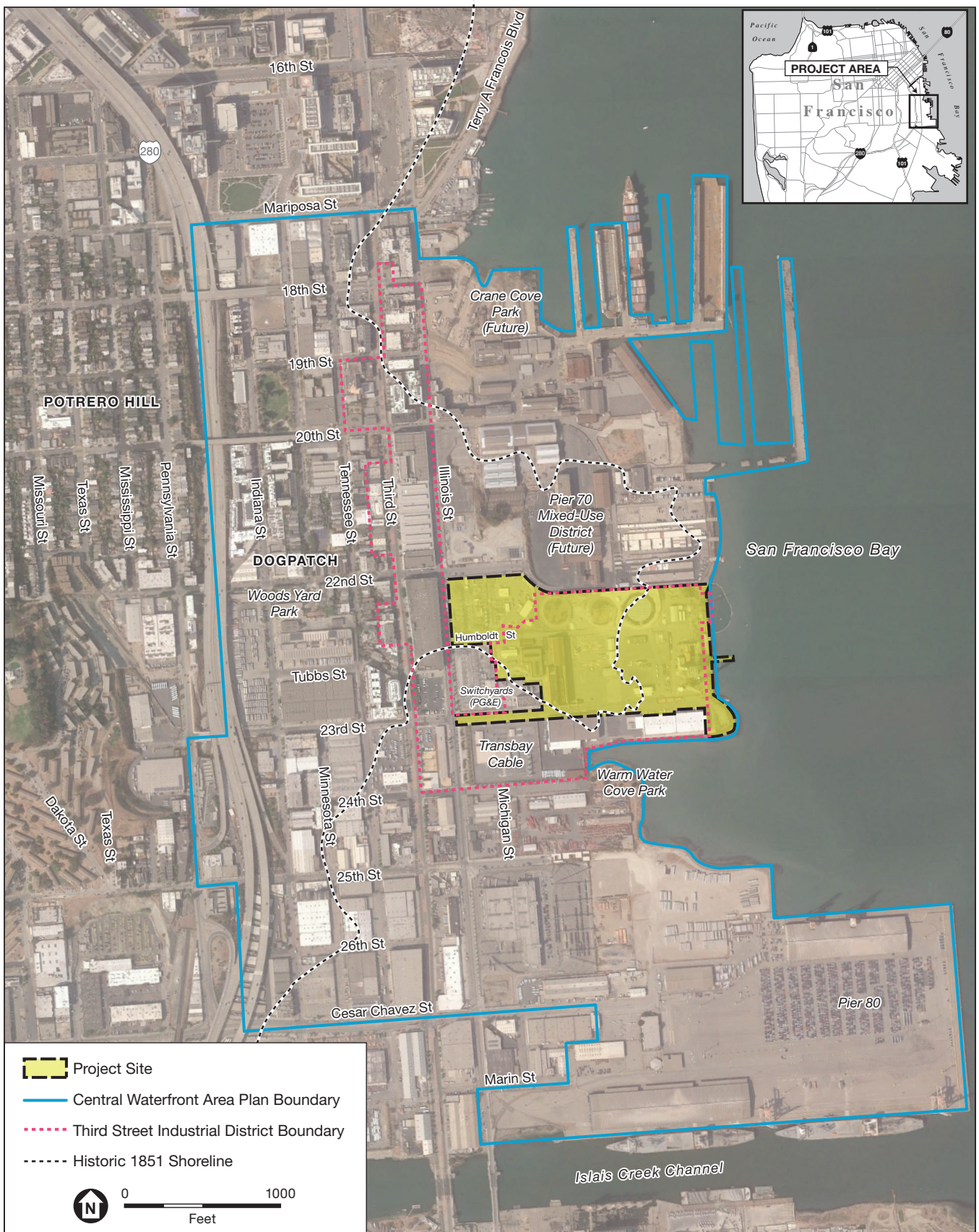


# Exhibit 1: Site Location



SOURCE: Google Earth, 2017; ESA, 2018

Potrero Power Station Mixed-Use Development Project

# Exhibit 2: Land Use Program

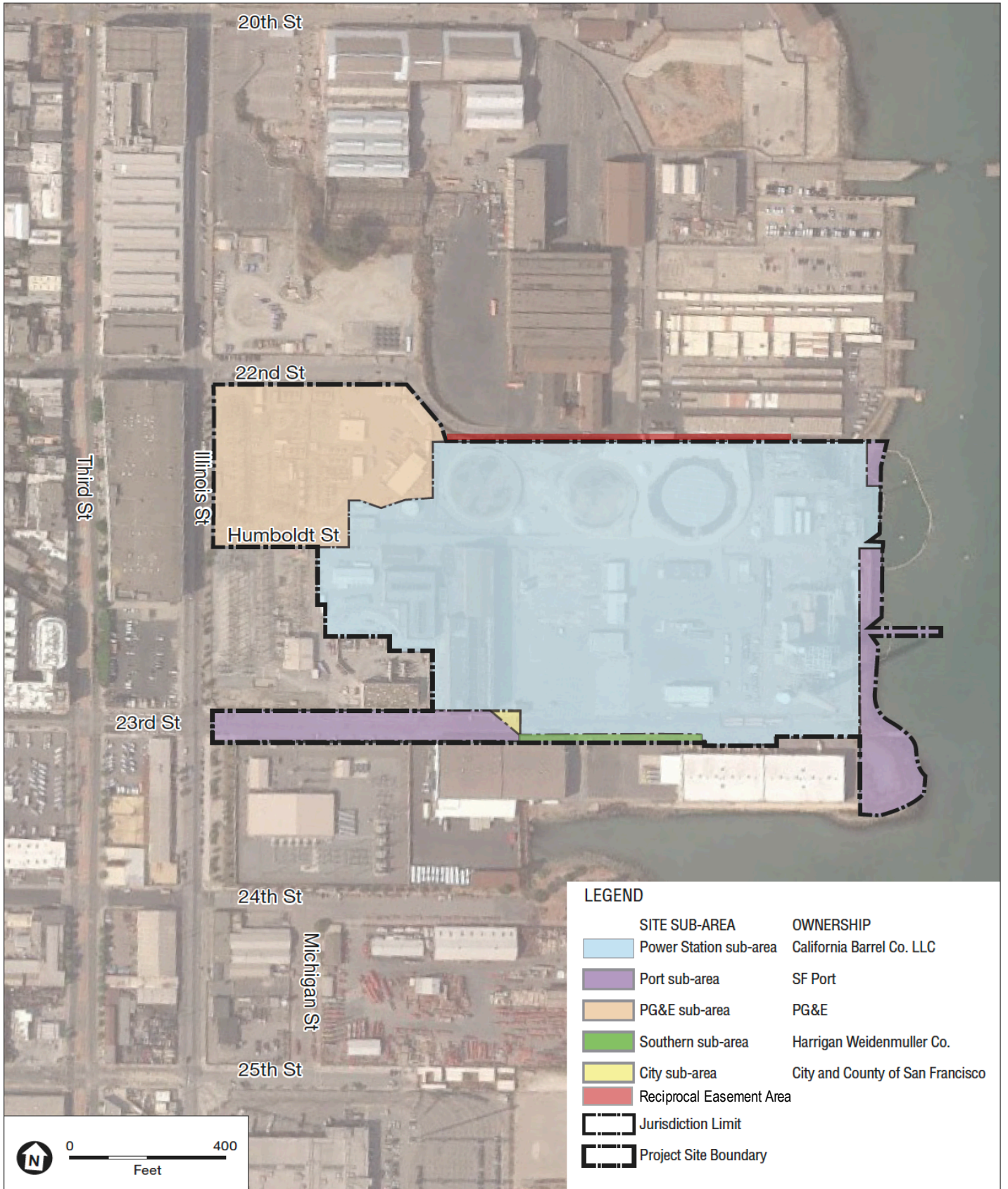


## LEGEND

- Residential
- Office / R&D
- Hotel and/or Residential
- Open Space
- Project Site Boundary
- \* Potential District Parking Garage and Publicly Accessible Rooftop Soccer Field Location



# Exhibit 3: Property Ownership

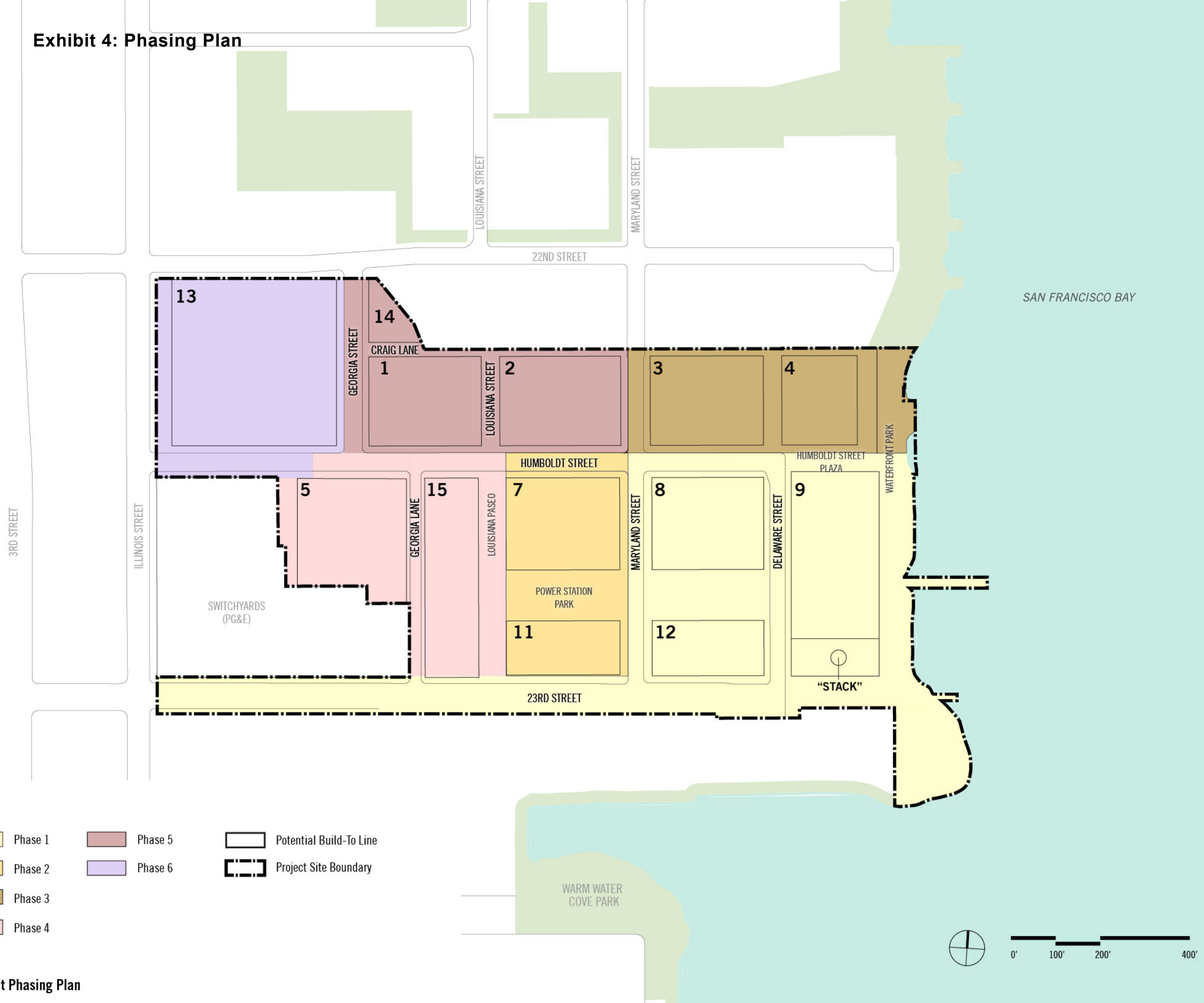


SOURCE: Perkins+Will 2017; Google Earth, 2017; ESA, 2018

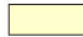




Potrero Power Station Mixed-Use Development Project

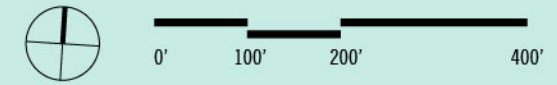
Project Site Sub-Areas and Ownership

# Exhibit 4: Phasing Plan

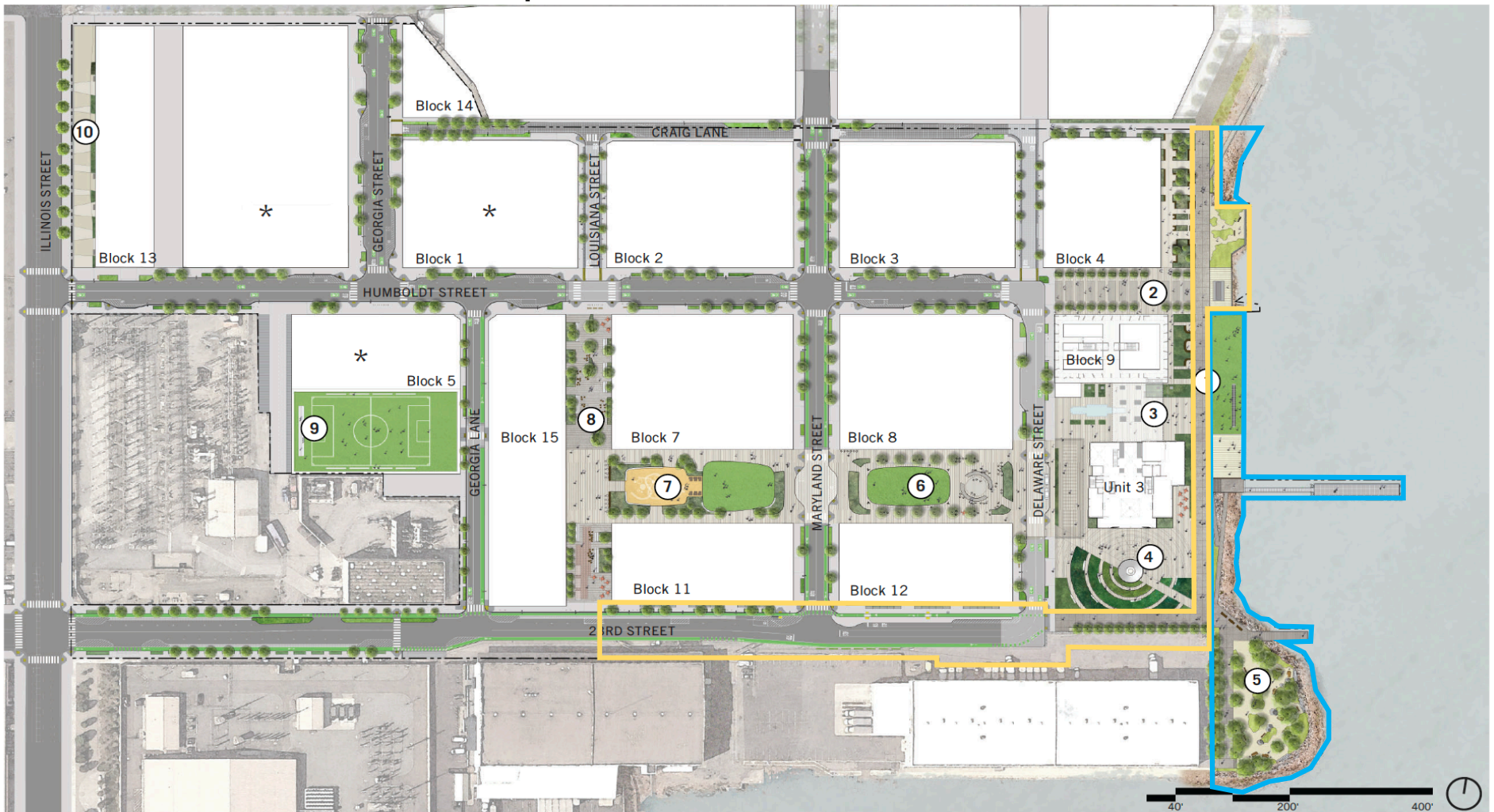


## LEGEND

- |  |   |   |
|--|---|---|
|  Phase 1 |  Phase 5 |  Potential Build-To Line |
|  Phase 2 |  Phase 6 |  Project Site Boundary   |
|  Phase 3 |   |   |
|  Phase 4 |   |   |



# Exhibit 5: Public Trust Easement Option



- ① Waterfront Open Spaces: Section 4.16-4.19
- ② Humboldt Street Plaza: Section 4.24
- ③ Block 9 Open Space: Section 4.22-4.23
- ④ Stack Plaza: Section 4.21
- ⑤ The Point: Section 4.20
- ⑥ Power Station Park East: Section 4.28
- ⑦ Power Station Park West: Section 4.29
- ⑧ Louisiana Paseo: Section 4.30
- ⑨ Rooftop U-10 Soccer Field: Section 4.31  
\* Rooftop Soccer Field will be at the District Parking Garage, which may be at Block 1, Block 5, or Block 13
- ⑩ Illinois Street Plaza: Section 4.32

Port Lands = 1.6 acres

Public Trust Easement Parcel = 2.0 acres (Waterfront Open Spaces = 0.9 acres, 23rd Street ROW = 0.9 acres, Other = 0.2 acres)