



Treatment on Demand Presentation

San Francisco Pretrial

Tierra Sims and Key Bernard



Outline

- 1 Agency Introduction
- 2 ICR Overview & Needs
- 3 Innovation
- 4 Questions

At a Glance

We prevent **unnecessary pretrial incarceration** with a wide array of programming, which includes pretrial diversion, case management, reentry planning, and treatment placement.

47 years of experience in San Francisco

6,478 clients served annually

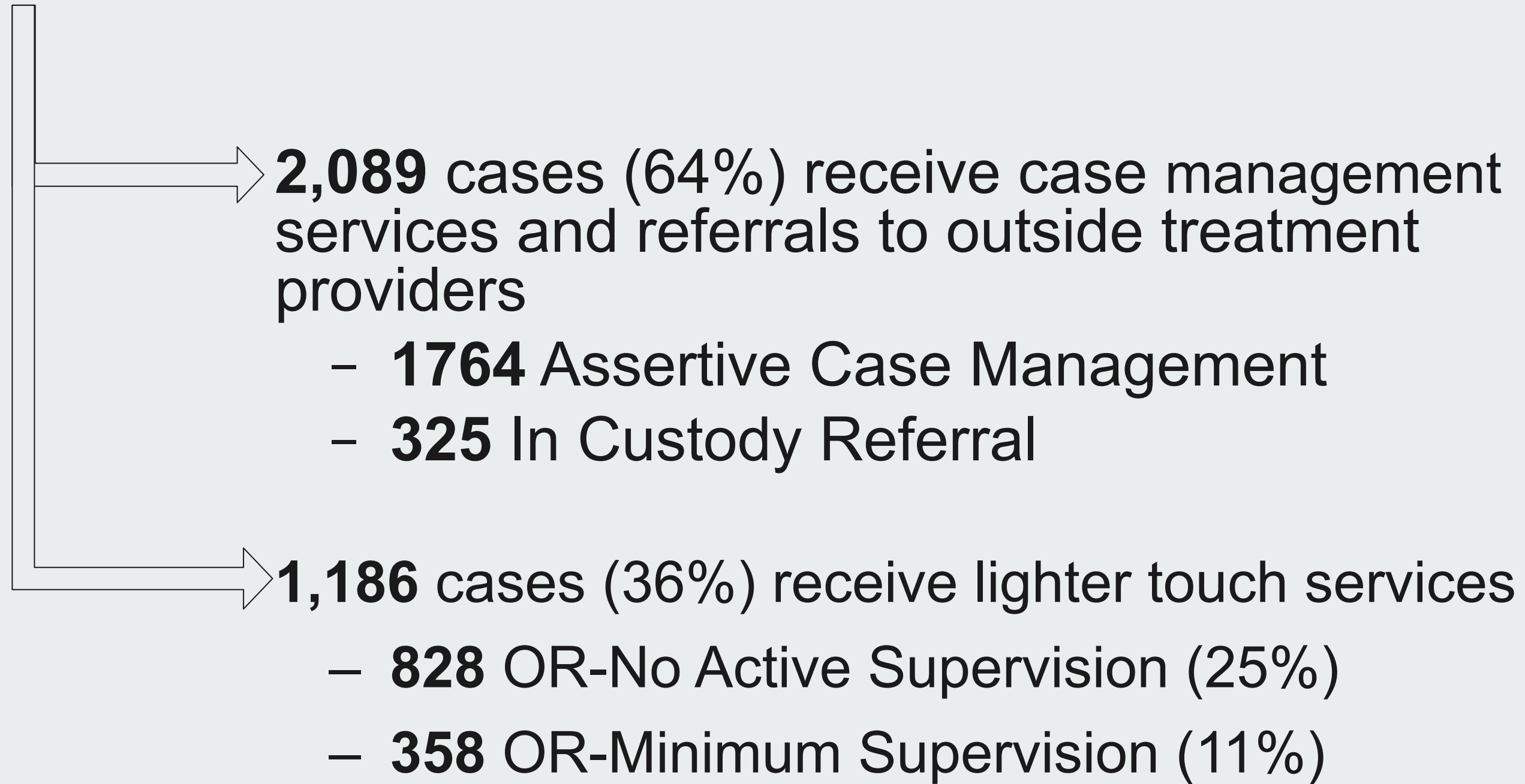
611,648 days of unnecessary confinement avoided annually



2023 Measures

January - September

3,276 cases referred to SF Pretrial programs



2023 Measures (cont.)

January - September

Of the **2,089** cases released to ACM and ICR

- **933** clients reported using at least once illicit substance
 - 438 reported using at least two illicit substances
- **854** reported being diagnosed with a mental health issue
- **511** reported both a mental health diagnosis + substance abuse issues
- **637** expressed immediate willingness to participate in treatment
- **1,100+** referrals to outside treatment providers, including groups, counseling, outpatient programs, and in-patient programs



In-Custody Referrals

Operations

- Release mechanism for post-arraignment clients
 - ICR referral can be requested by defense attorney or made by judge
- Interviews conducted to supplement Public Safety Assessment
- Based on interview, ICR team recommends either granting or denying release
- Judge then orders individual released to ACM or further detained
- Leads to additional assessment by Pretrial to determine fit and amenability with our program

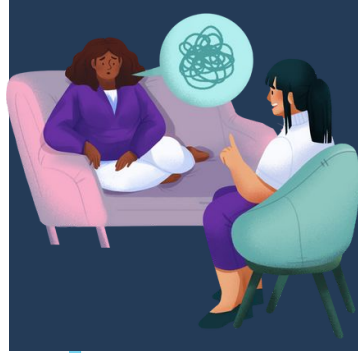


Referrals in September
2023

104



Specialized Positions

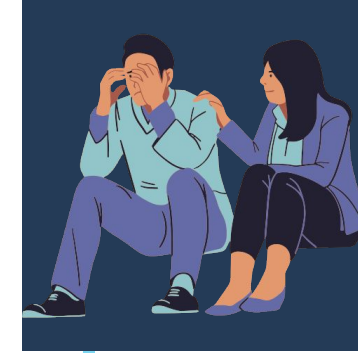


PTP Director + Case Manager

Effective 2023

- Partnership between SF Pretrial and Superior Court
- Funded through Judicial Council of California
- Focus on forming relationships with treatment providers outside of SF City & County
- Goal to expand network of treatment providers + address current shortage of resources in local setting

Reducing barriers to client treatment



Strategic Partnerships

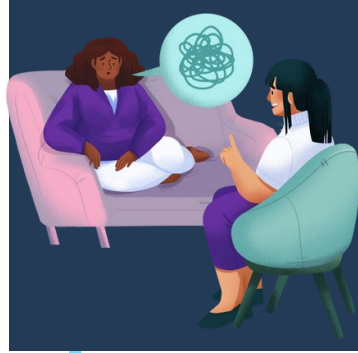
Effective 2021

- Establish strong partnerships, assist with building community networks, and utilize appropriate resources that serve a range of client needs
- Organize and coordinate existing external partnerships
- Track referrals and placement and program outcomes

Enhancing service network



Specialized Positions

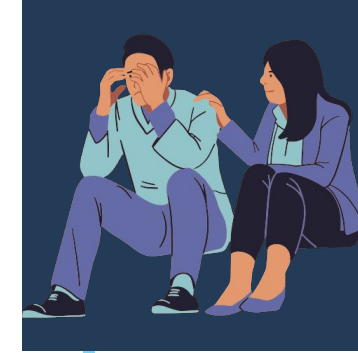


Clinical Social Workers

in 2021, we introduced two in-house clinical social workers to its team.

- Provide counseling, work with mental health needs, and give practical assistance to clients.
- Support related to applying for public assistance or housing referrals, as well as the emotional support that many clients need to make a change.
 - Assist higher-need clients with a clinical lens to stop a cycle of rearrests.

Specialized mental health services



Continuum of Care Navigators

In 2022, we introduced two Continuum of Care Navigators (CCN), full-time staff dedicated to providing outside referrals for continued care, education, and support.

- Outreach to find clients who don't have cell phones, addresses, or means of transportation.
 - Knocking on tents, talking to clients in their environments, and escorting them via shared rides to court, therapy, shelter, and other external resources.

Community outreach



Pretrial Treatment Project

Program Overview

Treatment Project designed to increase accessibility and remove barriers to mental health and substance use treatment.

Operations

- Partnerships with Private Pay Programs - Able to locate treatment programs throughout California based on client needs.
- Able to accommodate LGBT+ and gender non-conforming, arson history, violence history, women with children, and sex offender registration.
- Extended Care - Clients have access to step-down levels of care including partial hospitalization programs, intensive outpatient programs, and sober living environments.

What's next? - Enhanced Care Management (ECM)



Stabilization Housing + MHASF

- SFPDP partners with The Inn on Folsom Hotel to provide stabilization placements while clients wait for their treatment bed.
- We have access to 16 rooms
- We contract with San Francisco Mental Health Association to provide on site resources and support through a Peer Navigator.





Any Questions?



Thank you!

Questions?

davidm@sfpredtrial.org

tierras@sfpredtrial.org

keyb@sfpredtrial.org



San Francisco
Pretrial Diversion Project