



Request to Approve Amendment No. 1 to Contract Number PRO.0168.B - Engineering Services for Transmission Pipelines

**San Francisco Board of Supervisors – Budget and Finance Committee meeting
November 13, 2024**

Background



PRO.0168.B Transmission Pipeline Facilities



- PRO.0168.B Pipeline facilities



Regional Pipeline Projects (10-year CIP Funding)

PRO.0168.B Projects:

- Crystal Springs Pipeline 2 Rehabilitation Reaches 2 and 3 (K10 to K30)
- Sunol Valley Pipelines Seismic Upgrades – SVWTP 78” Effluent Pipeline
- Sunol Valley Pipelines Seismic Upgrades – Calaveras Pipeline
- Sunol Valley Pipelines Seismic Upgrades – San Antonio Pipeline (SAPL) Replacement
- Sunol Valley Pipelines Seismic Upgrades – Alameda Siphon #1-3
- Jail Waterline Replacement (SF Sheriff CIP)
- Palo Alto Pipeline Replacement
- Crystal Springs Pipeline 2 Reach 5 (K40 to K50)
- Regional PCCP Rehab (CS3, BDPL 4 & SAPL)
- Crystal Springs Pump Station Upgrades

	Capital Plan (FY2020-21 thru FY2029-30)	Capital Plan (FY2024-25 thru FY2033-34)
	\$318.9M	\$409.4M

- The needs assessment work has helped SFPUC to define project scopes and the SFPUC has increased the latest capital program budgets to reflect the updated needs



Contract PRO.0168.B – Current Contract Budget & Proposed Amendment 1 Modifications

Project Name	Current Phase	Current Contract Budget	Proposed Amendment 1 Modifications	
CSPL2 Rehabilitation Reaches 2 and 3 (K10 to K30)	35% Design	\$ 2,507,226	Design	\$ 950,000
			ESDC*	\$ 1,500,000
CSPL2 Reach 5 (K40 -K50)	65% Design	\$ 2,240,907	ESDC	\$ 800,000
Regional PCCP Rehab (BDPL4)	Planning	\$ 2,184,556	n/a	
Regional PCCP Rehab (BDPL4) - BDPL4 @ Milpitas	Planning	\$ -	Planning	\$ 750,000
			Design	\$ 1,250,000
			ESDC	\$ 1,200,000
Regional PCCP Rehab (BDPL4) - BDPL Ph 1	Planning	\$ -	Planning	\$ 350,000
			Design	\$ 1,500,000
			ESDC	\$ 500,000
Palo Alto Pipeline Replacement	not started	\$ -	NAR/AAR	\$ 1,200,000
Other projects	not started	\$ -	n/a	
Unencumbered	n/a	\$ 67,311	n/a	
TOTAL		\$ 7,000,000		\$ 10,000,000

CSPL2 Rehab – Reaches 2 and 3



- Replace four (4) miles of CSPL2, Reaches 2 and 3
- Capital plan budget increased from \$56M to \$82.8M
- Current Status: 35% Design (100% Design, Winter 2025)

CSPL2 Rehab – Reach 5



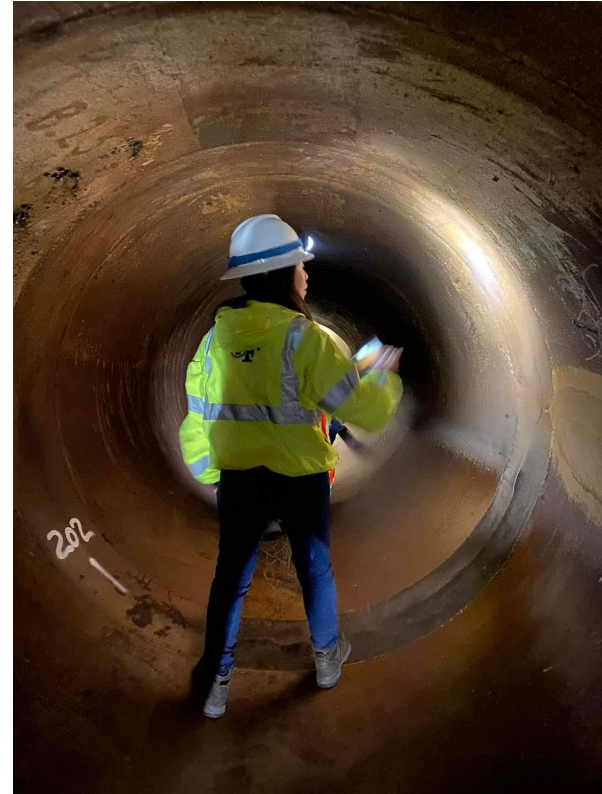
- Lining replacement for four (4) miles of CSPL2, Reach 5
- Add access manholes and isolation valve
- Capital plan budget increased from \$13M to \$41.4M
- Current Status: 65% Design (100% Design, Winter 2024)

BDPL4 – PCCP Rehab @ Milpitas



- Strengthen BDPL4 at Milpitas UPRR crossing for additional loading
- Capital plan budget increased from \$0M to \$18M
- Current Status: Planning (start Spring 2025)

BDPL4 – PCCP Rehab Phase 1



- Replace or slip-line up to 10 miles of Prestressed Concrete Cylinder Pipe (PCCP)
- Capital plan budget increased from \$5.5M to \$54.75M
- Liquefaction, lateral spreading, severe ground motion, slope instability
- Current Status: Planning (AAR Dec 2024, CER Spring 2025)

Palo Alto Pipeline Replacement



- Rehab/replacement of 5.1 miles of 36-inch welded steel pipe
- Capital plan budget remained the same at \$90M
- Current Status: Planning (start Winter 2024)



Contract PRO.0168.B – Current Contract Budget & Proposed Amendment 1 Modifications

Project Name	Current Phase	Current Contract Budget	Proposed Amendment 1 Modifications	
CSPL2 Rehabilitation Reaches 2 and 3 (K10 to K30)	35% Design	\$ 2,507,226	Design	\$ 950,000
			ESDC*	\$ 1,500,000
CSPL2 Reach 5 (K40 -K50)	65% Design	\$ 2,240,907	ESDC	\$ 800,000
Regional PCCP Rehab (BDPL4)	Planning	\$ 2,184,556	n/a	
Regional PCCP Rehab (BDPL4) - BDPL4 @ Milpitas	Planning	\$ -	Planning	\$ 750,000
			Design	\$ 1,250,000
			ESDC	\$ 1,200,000
Regional PCCP Rehab (BDPL4) - BDPL Ph 1	Planning	\$ -	Planning	\$ 350,000
			Design	\$ 1,500,000
			ESDC	\$ 500,000
Palo Alto Pipeline Replacement	not started	\$ -	NAR/AAR	\$ 1,200,000
Other projects	not started	\$ -	n/a	
Unencumbered	n/a	\$ 67,311	n/a	
TOTAL		\$ 7,000,000		\$ 10,000,000



Services of the San Francisco
Public Utilities Commission

