



CITY AND COUNTY OF SAN FRANCISCO
San Francisco Municipal Transportation Agency
Request for Proposals
THE PROCUREMENT OF
30-Foot, 40-FOOT AND 60-FOOT LOW FLOOR
DIESEL HYBRID COACHES

| Proposal Section | Title | Bid Submission Requirements |
|------------------|-------------------------------|--|
| 3-G | Driver's Station and Controls | <ol style="list-style-type: none">1) Detail the design that has gone into making the driver's station a safe, comfortable place to work with controls within easy reach. Detail where hybrid-electric system controls differ from conventional bus controls.2) Provide fully dimensioned plan and elevation drawings of the driver's station, meeting SFMTA's requirements, that you plan to supply; include the barrier, seat, steering column, pedals, dashboard and side console, windows, visors, and shades.3) Supply a drawing of the driver's window.4) How will the exterior and interior mirrors proposed meet the specification requirements?5) Describe locations for mounting radio equipment in the driver's station. |

Please refer to the attached Sales Information Bulletin which shows the proposed Driver's Area including all controls, compartments, dash layout, driver's station, etc. Two driver control drawings have also been included and highlighted to show the differences in the hybrid-electric system controls. Please note that the Hybrid drawings are very customer specific and are an example only. The highlighted areas will be the only changes to the configuration. Information as requested in regards to the driver's window, mirrors and the proposed SDS box is also included.

SALES INFORMATION BULLETIN

#350-001 | Model: Xcelsior | Lengths: All | Propulsions: All

Driver's Controls

Instrument Panel

Xcelsior comes standard with the industry's first electronic instrument panel. The electronic instrument panel is proprietary to New Flyer and was designed by Parker-Vansco. This automotive-like cluster, housed in a more streamlined, contemporary dash, features integrated inputs, outputs, gauges, LCDs, tell tales and user buttons. It has two CAN ports for built-in pocket gateway functionality and bridges the drivetrain J1939 to chassis J1939.

Additional features:

- USB device port
- Total of 27 inputs:
 - 3 Wake Ups Active High
 - 12 Digital Active Low
 - 6 Digital Active High
 - 5 Analogs (3 Position Switch Settings)
 - 1 Frequency Input
- Total of 3 outputs:
 - 2 High Side Outputs 2 A max.
 - 1 Low Side Output 2.5 A max.
- User-programmable routing table for passing or blocking of J1939 Messages
- User-programmable inputs, outputs, gauges, tell tales, and LCDs
- Uses a standard off-the-shelf USB A-B cable to communicate with a PC
- Uploading, downloading and diagnostics are all done from one point on the vehicle
 - The instrument cluster serves as built-in service tool
- Advanced Diagnostics
 - Real time diagnostics
 - All documentation is stored in the VMMs
 - Monitor all inputs and outputs from one location
 - Monitor analog voltage
 - 'Force' inputs or outputs On or OFF
 - Upload logs and error codes



Steering Wheel

The steering wheel provided is a black hard plastic type with two spokes, 20 inches in diameter and with a center hub horn button.

Steering Column

The steering column is a 900 Series steering column manufactured by Douglas Autotech. A single-lever actuation system provides both tilt and telescoping action. The column tilts up and down in 21° and 7° increments.



SALES INFORMATION BULLETIN

Xcelsior Electronic Instrument Cluster

Air Pressure Gauges

- Two gauges in 40' bus
- Third gauge positioned above LCD screen in 60' bus

Speedometer

(MPH in US, KPH in CAN)



Tell Tales

- Up to 31 standard tell tales illuminate on dash
- Additional selected tell tales are programmed to display on LCD screen

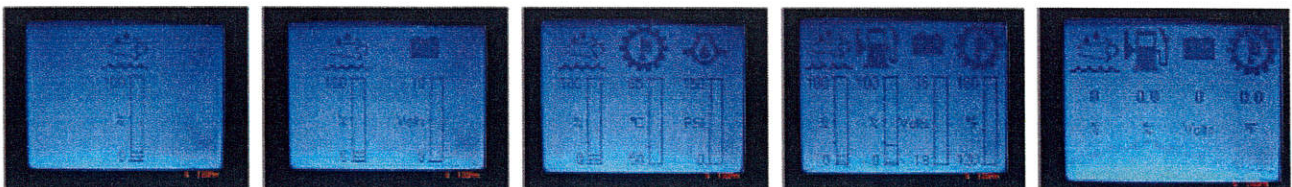
LCD Screen

- Up to four LCD screens
- Each LCD screen displays between 1 to 4 gauges
- 2010 EPA regulation requires that an urea level gauge always be present and in the "1" position

User Buttons

Odometer

Examples of LCD Screen Configurations





NEW FLYER

NEW FLYER
Xcelsior™

SALES INFORMATION BULLETIN

Accelerator & Brake Pedals

Both the accelerator and brake pedals are mounted to the driver's platform in the driver's area at a 45° angle. The brake valve is an E6 with a pressure transducer.

Dimmer & Turn Switch

The turn signals and dimmer switch have easy access for the driver. Both can be activated by floor mounted switches.

Overhead Recessed Panel

New Flyer has conveniently located a recessed panel on the upper left side of the driver to allow for various electronic features to be easily accessible by the driver. The cables will be concealed behind the panel and routed down the "B" post to the Secure Diagnostic Box behind the driver where the majority of the electronic equipment will be housed. The panel is hidden from the passengers' view.



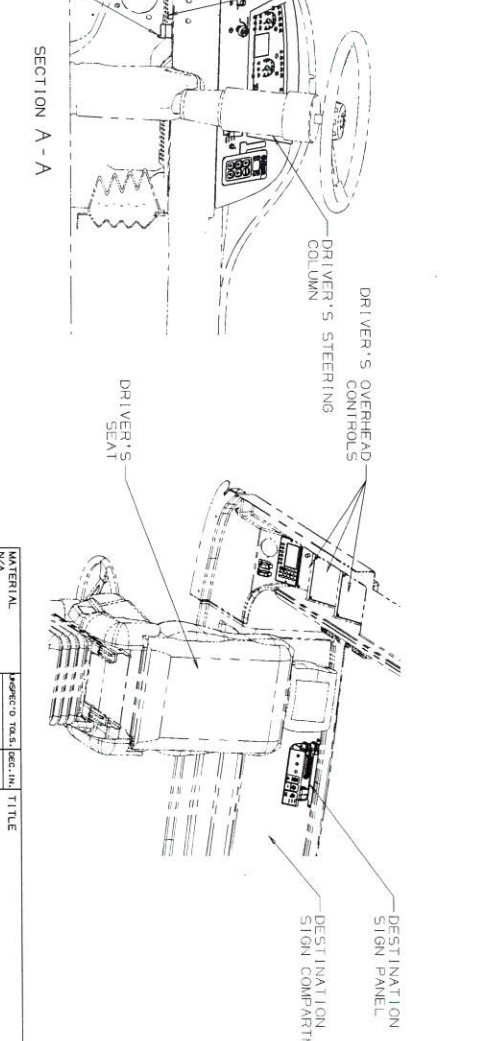
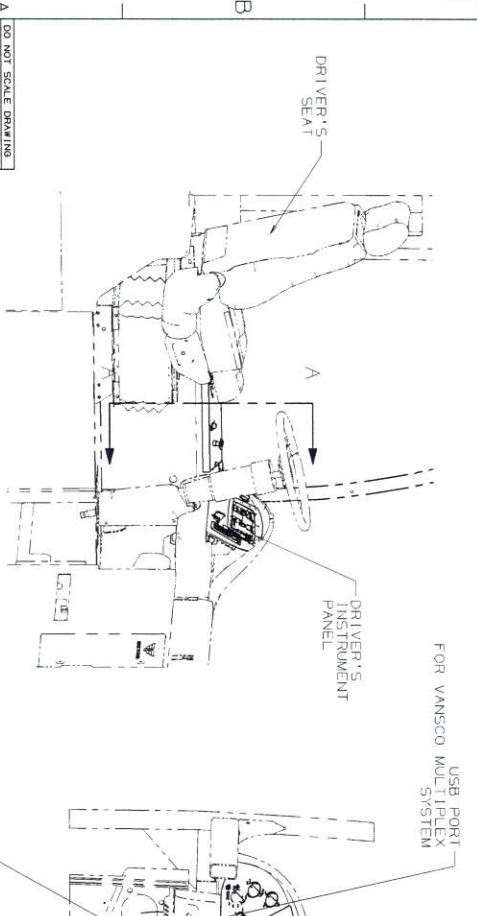
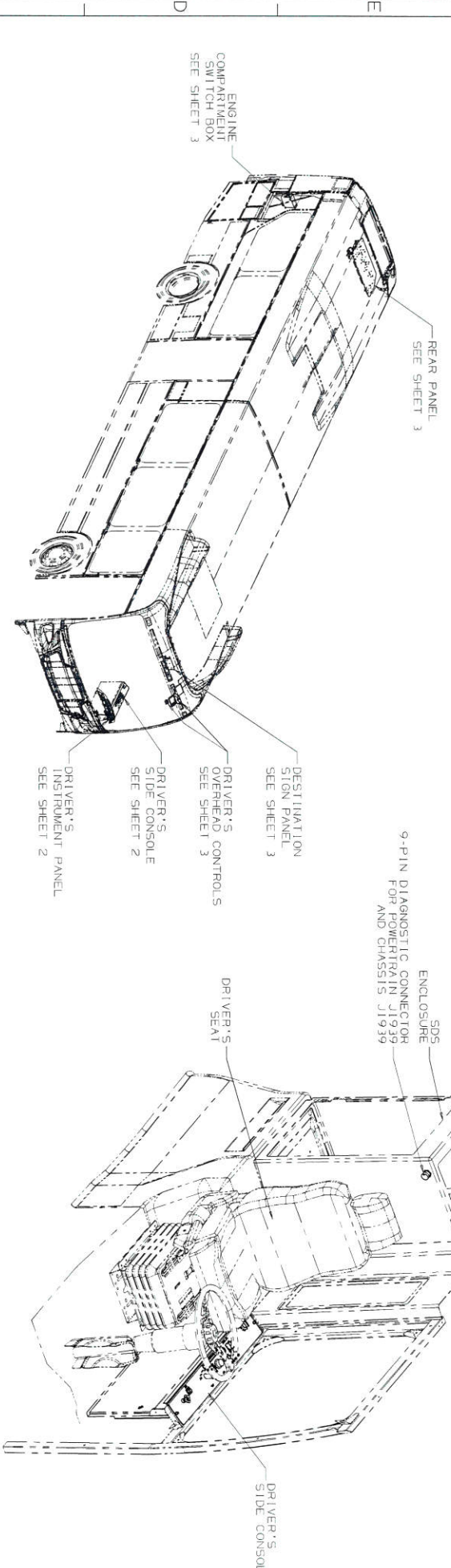
Standard Diesel Configuration

DRAWING N°

422841

THE INFORMATION CONTAINED IN THIS DRAWING IS PROPRIETARY TO NEW FLYER INDUSTRIES CANADA ULC OR ITS AFFILIATES AND IS NOT TO BE REPRODUCED, COPIED, OR TRANSMITTED IN ANY FORM OR BY ANY MEANS WITHOUT THE PRIOR WRITTEN CONSENT OF NEW FLYER, ONE OR MORE OF WHICH ARE REGISTERED TRADEMARKS OF NEW FLYER INDUSTRIES CANADA ULC. ALL RIGHTS RESERVED. © 2014 NEW FLYER INDUSTRIES CANADA ULC.

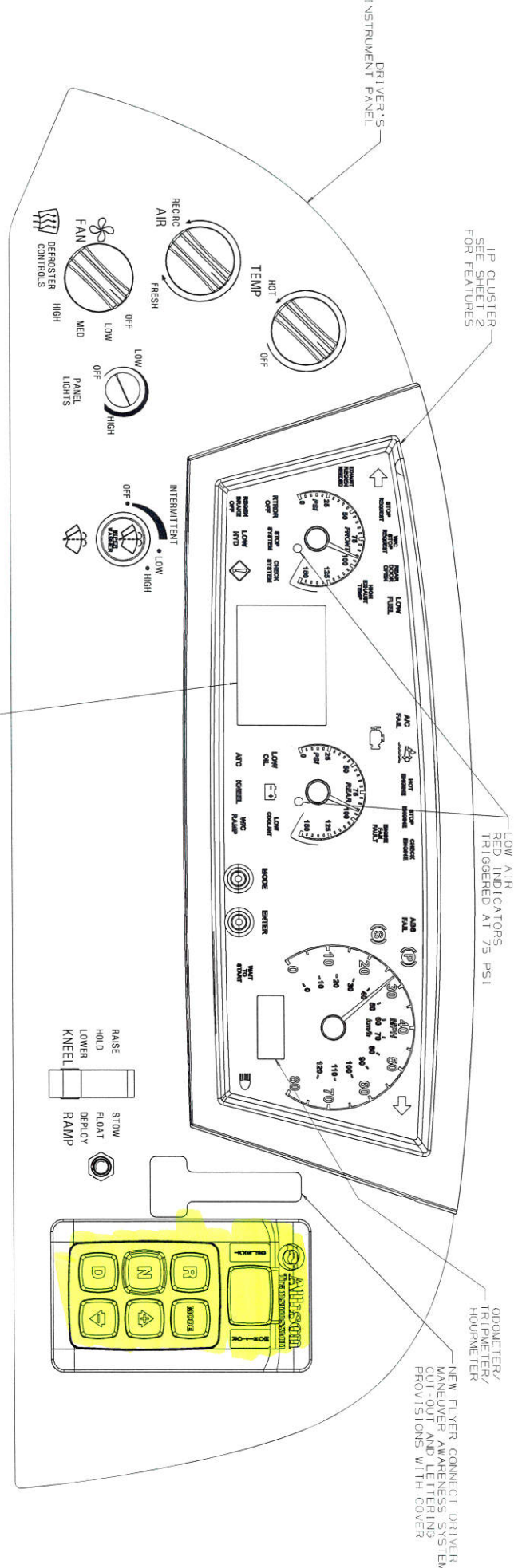
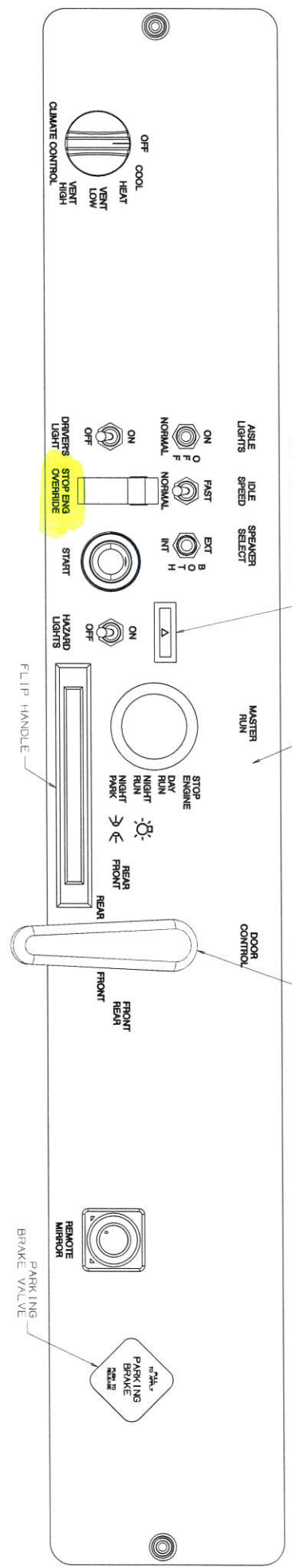
NOTE: FOR INSTALLATION DRAWINGS PLEASE REFER TO ATTACHED WSP BOB SHEET FOR PARTS LISTING



| | | | | | | | | | | | |
|------------------------|--|----------------------------------|---------------|------------------------|--|------------------|--|---------------------------|---------------------------------|-----------------------|--|
| DO NOT SCALE DRAWING | | DIMENSIONS IN 1/8" ANGLES IN 30° | | DRAWN BY JASON FULLAME | | DATE 100-1MAY-11 | | REV R SHEETS AFFECTED 141 | | DESCRIPTION ECU 03264 | |
| MATERIAL | | | AMERICAN TOL. | | | DEC. DIM. | | | APPROV. - DRIVER'S CONTROL | | |
| N/A | | | X .12 | | | X .015 | | | PRT N° 422841 | | |
| WEIGHT | | | X .005 | | | X .005 | | | SCALE NTS D | | |
| N/A | | | N/A | | | N/A | | | SHEET 1 OF 4 | | |
| TREATMENT NOT REQUIRED | | | SIMILAR TO | | | PART N° | | | REPORT ALL ERRORS TO ENR. DEPT. | | |
| | | | | | | 422841 | | | | | |

THE INFORMATION CONTAINED IN THIS DRAWING IS PROPRIETARY TO AMTESCORP. IT IS THE PROPERTY OF AMTESCORP. AND IS TO BE USED ONLY FOR THE PURPOSES SPECIFIED HEREIN. ANY REUSE, REPRODUCTION, OR DISSEMINATION OF THIS INFORMATION WITHOUT THE WRITTEN PERMISSION OF AMTESCORP. IS STRICTLY PROHIBITED. © 2014 NEW FLYER INDUSTRIES CANADA ULC. ALL RIGHTS RESERVED.

NOTE: FOR INSTALLATION DRAWINGS PLEASE REFER TO ATTACHED WPS BOM SHEET FOR PARTS LISTING



DO NOT SCALE DRAWING

DIMENSIONS IN 1/8" INCHES UNLESS INDICATED OTHERWISE

DRAWN BY: JASSEN FULLANE

DATE (DD-MM-YY): 23-FEB-14

REV: R

SHEET INCHES: ECO

DESCRIPTION: ECO

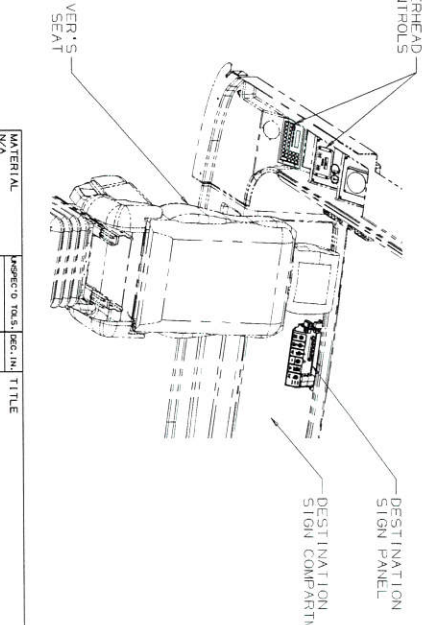
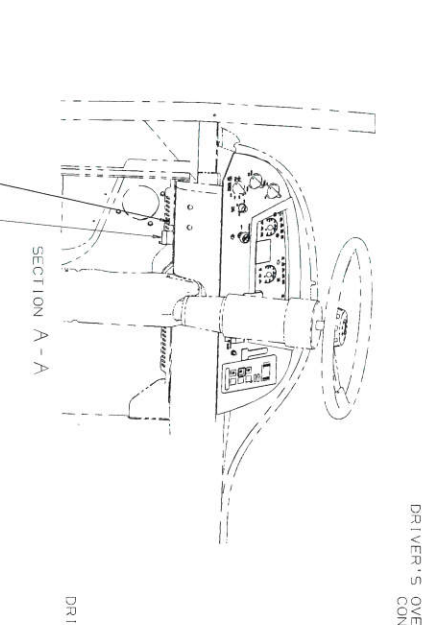
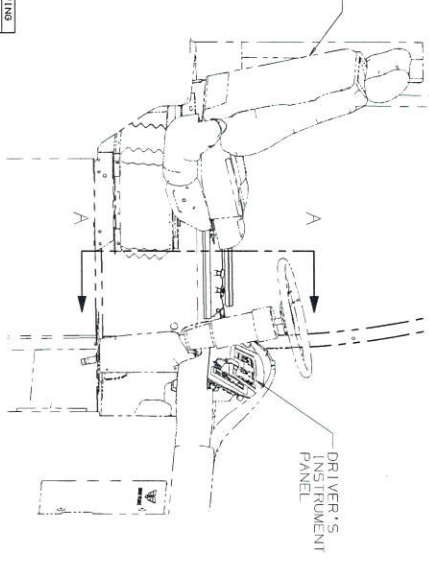
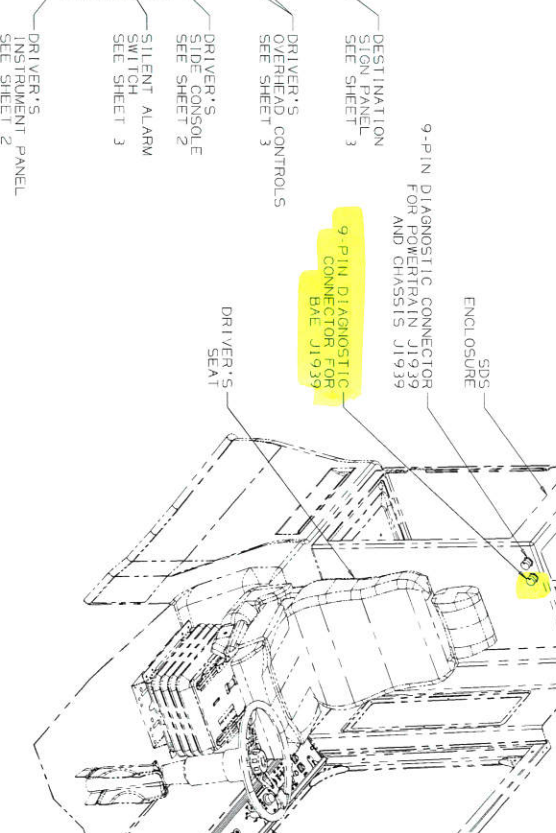
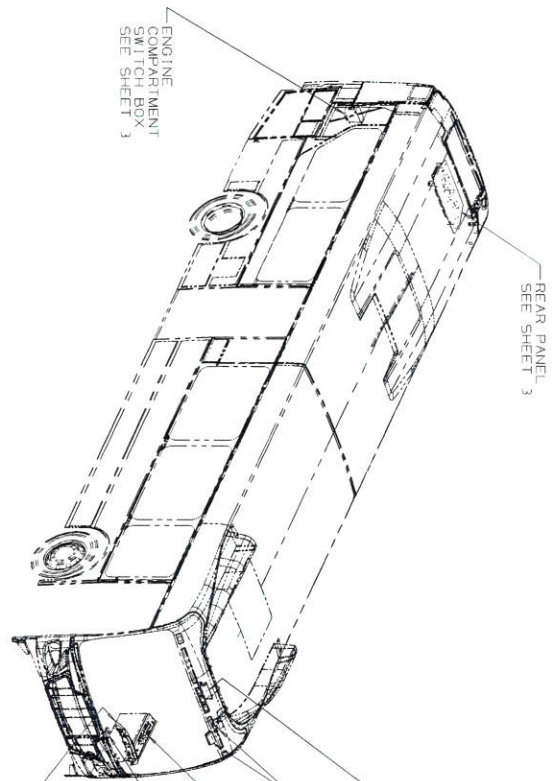
| MATERIAL | QUANTITY | UNIT | TITLE |
|--------------|----------|------|-------------------------|
| N/A | 1 | EA | APPROV-DRIVER'S CONTROL |
| WEIGHT | 1.12 | KG | |
| N/A | 1 | EA | |
| TREATMENT | 1 | EA | |
| NOT REQUIRED | 1 | EA | |

| APPROV-DRIVER'S CONTROL | PART N° | SHEET 2 OF 4 |
|-------------------------|---------|-----------------------------------|
| | 422841 | |
| SCALE: NIS | | REPORT ALL ERRORS TO ENR, DEPT. 1 |

BAE Hybrid Example

THE INFORMATION CONTAINED IN THIS DRAWING IS PROPRIETARY TO BAE SYSTEMS INC. AND IS NOT TO BE DISCLOSED TO ANY OTHER PARTY WITHOUT THE PRIOR WRITTEN CONSENT OF BAE SYSTEMS INC. © 2014 NEW FLYER INDUSTRIES CANADA ULC. ALL RIGHTS RESERVED.

NOTE: FOR INSTALLATION DRAWINGS PLEASE REFER TO ATTACHED WIP DRAW SHEET FOR PARTS LISTING



USB PORT FOR HP EX SYSTEM
FOR VANSICO WILL SYSTEM
9-PIN DIAGNOSTIC CONNECTOR FOR POWERTRAIN J1939 AND CHASSIS J1939

| |
|-------------------------------|
| DO NOT SCALE DRAWING |
| DIMENSIONS IN 1/8" ARE IN MM. |
| THD ANGLE 60° |
| DRAWN BY ANDREW GAVESON |
| DATE (DD-MM-YY) 27-JAN-14 |

| REV | DESCRIPTION | CON. OTHER |
|-----|-------------------------|------------|
| 0 | 21 SHEET (INCORPORATED) | ECO |

| | | |
|-------------------------|----------------------------|--------------------------|
| MATERIAL N/A | APPROX. TOOLS (REQ. LINES) | TITLE |
| WEIGHT N/A | XXX 014 1:03 | APPROV. DRIVER'S CONTROL |
| TREATMENT NONE REQUIRED | REQ. ROLL 1:11 | PART N° 560094 |
| | SIMILAR TO | SCALE N15 |
| | | SHEET 1 OF 4 |

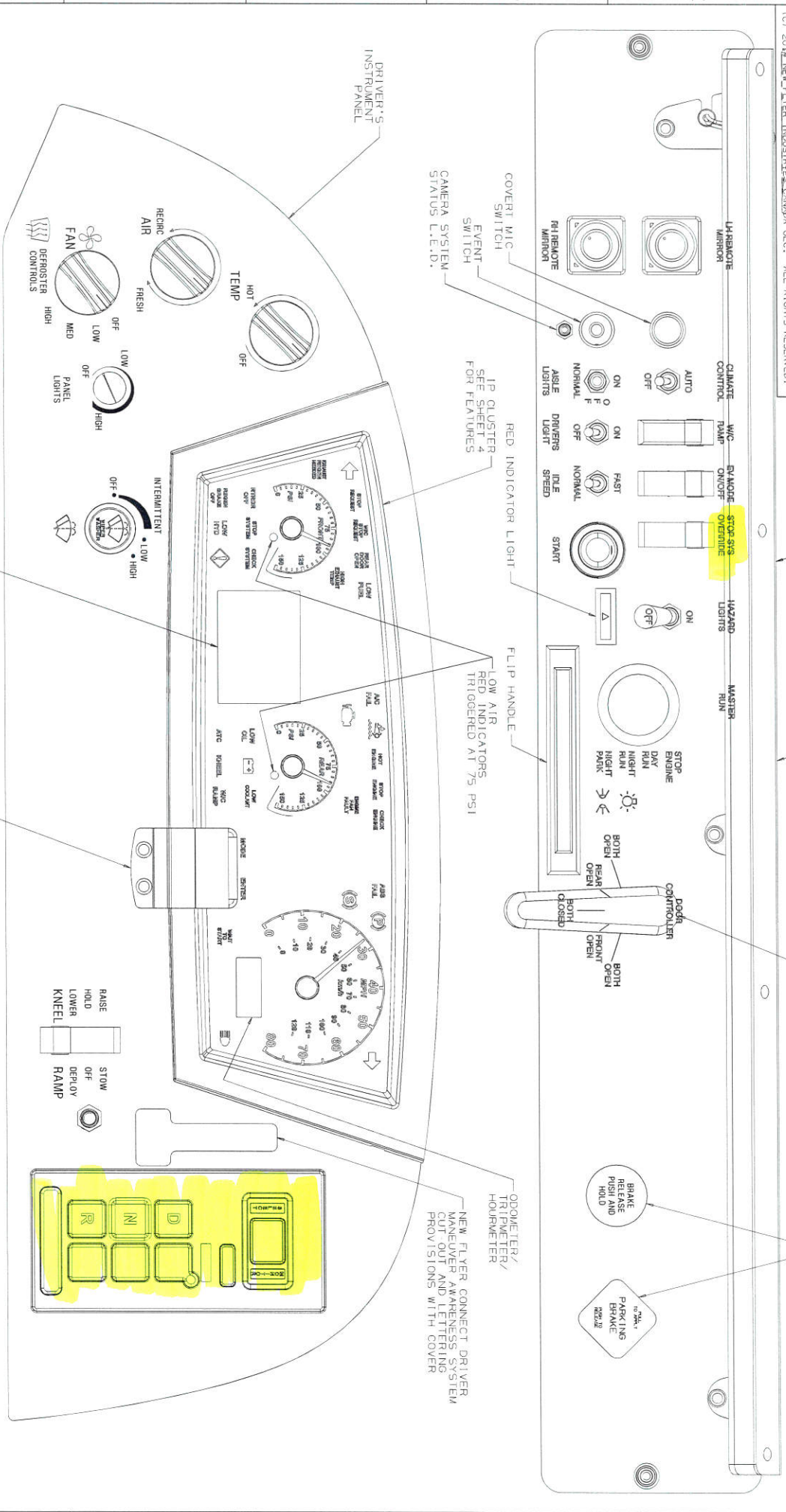
DRAWING N° 560094

REPORT ALL ERRORS TO ENG. DEPT.

THE INFORMATION CONTAINED IN THIS DRAWING IS PROPRIETARY TO NEW FLYER INDUSTRIES CANADA ULC. ALL RIGHTS RESERVED. THIS DRAWING AND ALL MATERIAL DELIVERED WITH IT MUST BE RETURNED UPON REQUEST AND SHALL NOT BE DISCLOSED TO THIRD PARTY ESCAPE WITHOUT THE PRIOR WRITTEN CONSENT OF NEW FLYER INDUSTRIES CANADA ULC. © 2014 NEW FLYER INDUSTRIES CANADA ULC. ALL RIGHTS RESERVED.

NOTE: FOR INSTALLATION DRAWINGS PLEASE REFER TO ATTACHED WPS BOM SHEET FOR PARTS LISTING

DRAWING NO
560094



DO NOT SCALE DRAWING

| |
|-------------------------|
| DIMENSIONS IN 1/8" |
| TWO ANGLE |
| DRAWN BY ANDREW GATESON |
| DATE 100-MAR-YY1 |
| REV 0 |

| REV | DESCRIPTION |
|-----|-------------|
| 0 | ECO |

| | | | |
|------------|---------------|--------------------|-----|
| MATERIAL | N/A | APPROX. DIMS. (mm) | 112 |
| WEIGHT | N/A | APPROX. DIMS. (mm) | 103 |
| TREATMENT | NONE REQUIRED | APPROX. DIMS. (mm) | 103 |
| SIMILAR TO | | APPROX. DIMS. (mm) | 103 |

TITLE: APPROV - DRIVER'S CONTROL

PART NO: 560094

SCALE: NTS

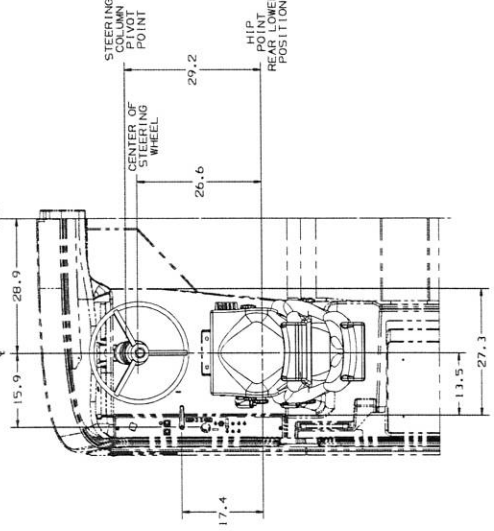
SHEET 2 OF 4

REPORT ALL ERRORS TO ENR. DES'N.

THIS DRAWING AND ITS CONTENTS ARE UNCLASSIFIED AND FOR UNRESTRICTED PUBLICATION AND DISSEMINATION. ANY INFORMATION DISCLOSED TO OTHERS AT ANY TIME WITHOUT THE WRITTEN CONSENT OF NEW FLIGHT INDUSTRIES LIMITED WILL BE TREATED AS A CONFIDENTIAL MATTER.

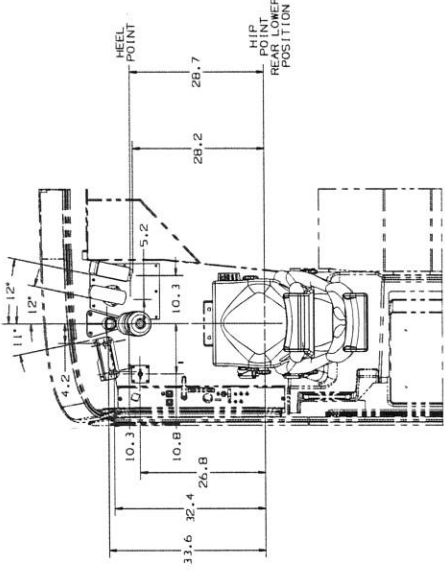
NOTE: FOR INSTALLATION DRAWINGS PLEASE REFER TO ATTACHED MRP BOM SHEET FOR PARTS LISTING

SEAT, STEERING AND SIDE CONSOLE RELATIONSHIP

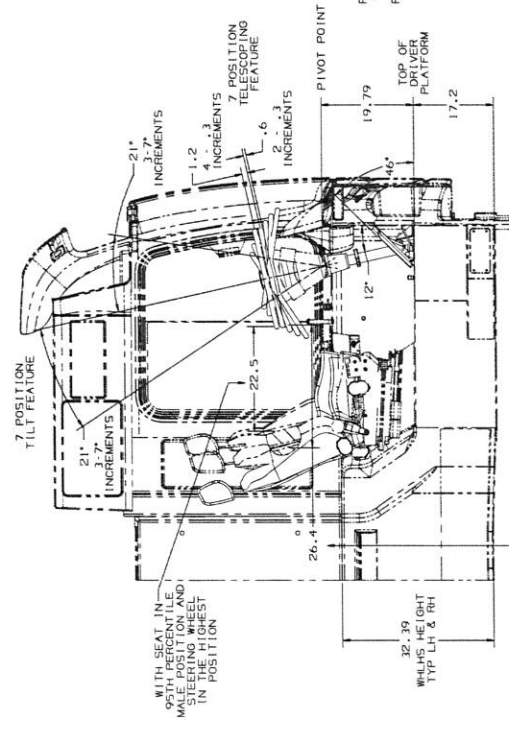


SIDE OF SIDE CONSOLE PANEL

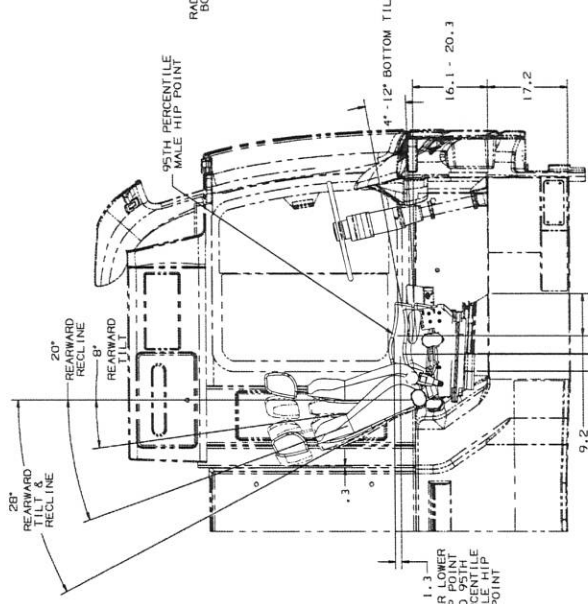
SEAT AND FLOOR PEDAL AND SWITCH RELATIONSHIPS



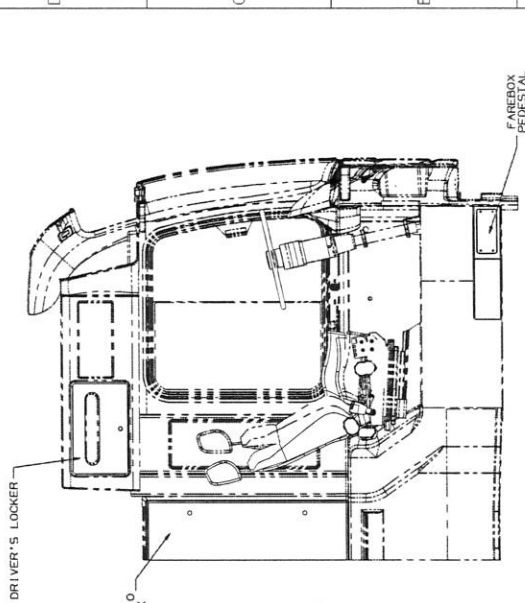
STEERING WHEEL AND COLUMN CHARACTERISTICS (22 INCH DIAMETER STYLE)



DRIVER'S SEAT CHARACTERISTIC (USCC BRAND)



OPTIONAL FEATURES



| | | |
|----------------------|-------------------|-----------|
| DO NOT SCALE DRAWING | DRAWING NUMBER | THICKNESS |
| BY NAME (DRAWING) | DATE | SCALE |
| DATE | BY NAME (DRAWING) | SCALE |
| DATE | BY NAME (DRAWING) | SCALE |

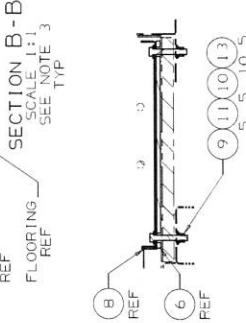
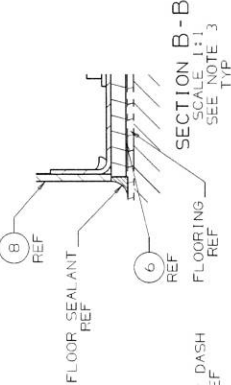
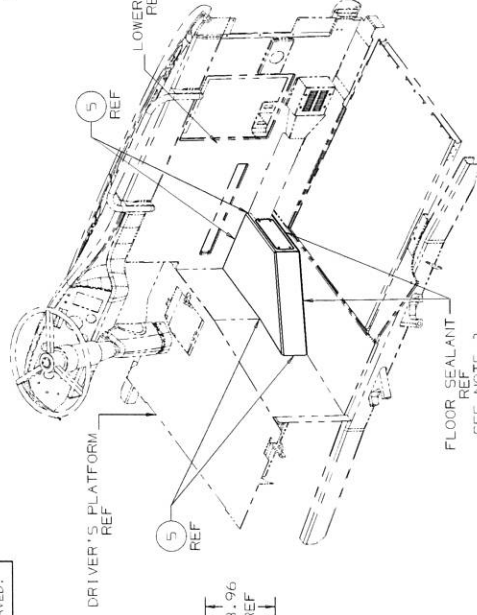
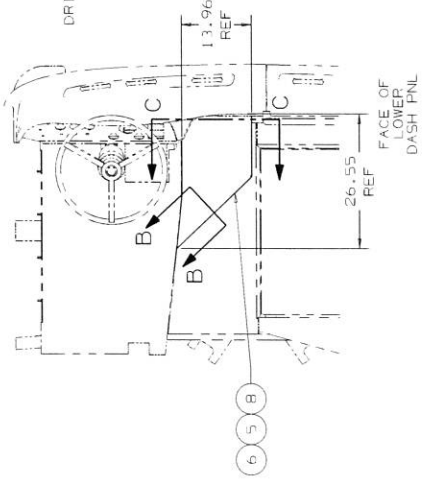
| | |
|-----|------------------------|
| REV | DESCRIPTION |
| 1 | ISSUED FOR PRELIMINARY |
| 2 | ISSUED FOR PRELIMINARY |
| 3 | ISSUED FOR PRELIMINARY |
| 4 | ISSUED FOR PRELIMINARY |
| 5 | ISSUED FOR PRELIMINARY |
| 6 | ISSUED FOR PRELIMINARY |
| 7 | ISSUED FOR PRELIMINARY |
| 8 | ISSUED FOR PRELIMINARY |
| 9 | ISSUED FOR PRELIMINARY |
| 10 | ISSUED FOR PRELIMINARY |

| | | | | | | | |
|---------|------|-----|-------------|--|----------------------------|--|--|
| GENERAL | | | PART'S NAME | | TITLE | | |
| N/A | N/A | N/A | 360972 | | BID-XCELSIOR DRIVER'S AREA | | |
| REV | DATE | BY | SCALE | | PART N° | | |
| | | | 1:10 | | 360972 | | |
| | | | | | INDUSTRIAL | | |
| | | | | | 360972 | | |
| | | | | | SCALE 1:10 | | |
| | | | | | SHEET 1 OF 1 | | |
| | | | | | TOTAL SHEETS | | |

NOTICE: THIS DRAWING IS A FACSIMILE OF A PHOTOGRAPH OF THE ORIGINAL. ANY MANUSCRIPT REVISIONS ARE NOT ALLOWED.

NOTE: FOR INSTALLATION DRAWINGS PLEASE REFER TO ATTACHED MRP BOM SHEET FOR PARTS LISTING

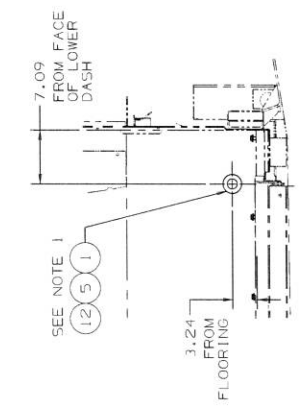
THE INFORMATION CONTAINED IN THIS DRAWING IS PROPRIETARY TO NEW FLYER INDUSTRIES CANADA ULC. ALL RIGHTS RESERVED. THIS DRAWING AND ALL MATERIAL DELIVERED WITH IT MUST BE RETURNED UPON REQUEST AND SHALL NOT BE DISCLOSED TO THIRD PARTIES WITHOUT THE WRITTEN PERMISSION OF NEW FLYER INDUSTRIES CANADA ULC. PATENTS MAY BE PENDING FOR THE PRODUCTS DEPICTED HEREIN. MORE INFORMATION IS AVAILABLE FROM NEW FLYER INDUSTRIES CANADA ULC. © 2009 NEW FLYER INDUSTRIES CANADA ULC. ALL RIGHTS RESERVED.



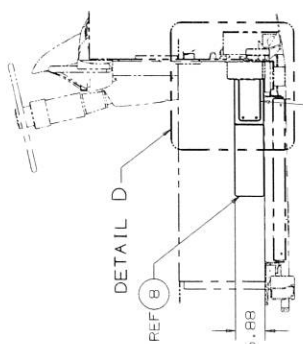
SECTION C-C
SCALE 1:4

- DESIGN REFERENCE:
- XCELLSIOR COACH.
 - 6.00" HIGH PEDESTAL.
 - STANDARD BLACK AS-150 ANTI-SLIP COATING.
 - FOR MOUNTING A 4.1" OR 36" GFI.
 - CUT PREBUILT HOLES PROVISIONS.
 - CUT PREBUILT HOLES PROVISIONS.
 - PROVISIONS FOR A STEP HEATER.
 - CARBON STEEL PEDESTAL ASSEMBLY ON POLYETHYLENE SPACER SHEET.
 - WHEELCHAIR BOX TEST COMPLIANT.

ISO VIEW
REF ONLY



DETAIL D
SCALE 1:8
PARTS REMOVED FOR CLARITY.
SEE NOTE 1



DRILL .161 DIA HOLES USING ACCESS PLATE (ITEM 7) AS A TEMPLATE. PLACE PUSHNUT (ITEM 2) ON SCREWS (ITEM 3) BEFORE INSTALLING.

NOTES:

1. DRILL 2.00 DIA HOLE AT LOCATION SHOWN IN DETAIL D. BE DRILL THE HOLE WITH THE CORNER OF THE DRILL BIT TO SIT FLUSH ON THE SIDE OF THE DRIVER'S PLATFORM. ROUTE FAREBOX HARNESS THROUGH GROMMET (ITEM 1) THEN SEAL WITH ADHESIVE (ITEM 5) AND BUTYL TAPE (ITEM 12).
2. BUTT THE WELDED PEDESTAL ASSY (ITEM 8) TO THE DASH PANEL AND THE DRIVER'S PLATFORM. DRILL 5 HOLES AT 300 DIA IN FLOOR USING PEDESTAL (ITEM 8) AS A TEMPLATE.
3. USE FLOOR SEALANT FROM OPTION GROUP 450-XXXXX LINE ITEM 26 TO SEAL PEDESTAL ASSY (ITEM 8) TO FLOOR. TOOL SEALANT TO CREATE A SMOOTH RADIUS AS SHOWN IN SECTION B-B. ENSURE THE GAP BETWEEN PEDESTAL AND FLOOR IS COMPLETELY FILLED.
4. USE BLACK ADHESIVE (ITEM 5) ON TWO VERTICAL EDGES AND TOP HORIZONTAL EDGES OF PEDESTAL TO SEAL PEDESTAL TO DASH PANEL AND DRIVER'S PLATFORM.

| QTY | U/M | ITEM | PART NO. | DESCRIPTION | WEIGHT |
|-----|-----|------|----------|--------------------------------|-----------|
| 5 | EA | 13 | 2006036 | BOLT HEX 3/8" X 2.25" SS | - |
| 5 | EA | 12 | 5946376 | WASHER 5/16" X 3/8" SS | - |
| 5 | EA | 10 | 50M6000 | WASHER FLAT 5/8" J/B NOM | - |
| 5 | EA | 9 | 50P06000 | NUT 5/8" UNF | - |
| 1 | EA | 8 | 394140 | ASSY-FAREBOX PEDESTAL | 20.29 LBS |
| 1 | EA | 7 | 352707 | PLATE-FAREBOX PEDESTAL ACCESS | .81 LBS |
| 1 | EA | 6 | 394146 | PLATE-STEP SPACER POLYETHYLENE | 1.61 LBS |
| 1 | EA | 5 | 026380 | SIFA 321 BLACK UNIPAC | - |
| 1 | EA | 4 | 047001 | SCREW PH CR BLK #10 24 | - |
| 1 | EA | 2 | 047001 | PUSHNUT 1/2" ID NOM | - |
| 1 | EA | 1 | 0026569 | GROMMET 2.0" X 1.38 | - |

| MATERIAL | WATER | DESCRIPTION | WEIGHT |
|----------|-------|------------------------|-----------|
| N/A | N/A | INSTL-FAREBOX PEDESTAL | 25.46 LBS |

| PROPERTY | VALUE |
|------------|-------|
| XXX | 1.12 |
| XXX DIA | 1.03 |
| HEAD DIA | 1.03 |
| ANGLE INCL | 91 |

| TREATMENT | SIMILAR TO |
|-----------|------------|
| NONE | 352474 |

| SCALE | TITLE |
|------------|------------------------|
| SCALE 1:12 | INSTL-FAREBOX PEDESTAL |

| PART NO | SCALE |
|---------|------------|
| 394138 | SCALE 1:12 |

| APP'D | REV | DESCRIPTION |
|-------|--------|-------------|
| ECO | 199809 | ECO |

| DO NOT SCALE DRAWING | DIMENSIONS IN 1 |
|----------------------|------------------|
| ARE IN IN. | |
| THD ANGLE | |
| BY NAME | DO-MM-YY |
| DRAWN | 0.L.O. 28-JAN-10 |
| CHK'D | B.H. 29-JUN-10 |
| APP'D | ECO 29-JUN-10 |

| REPORT ALL ERRORS TO ENG. DEPT. |
|---------------------------------|
| SHEET 1 OF 1 |



NEW FLYER

#Option 422 | Model: Xcelsior | Length: ALL | Propulsion: ALL

ROLLER BLINDS

Product Features:

Two Roller blinds are available in the driver's area:

- Front Windshield 42.50 inches (108 cm) horizontal coverage



- Driver's Window 36.56 inches (93 cm) horizontal coverage

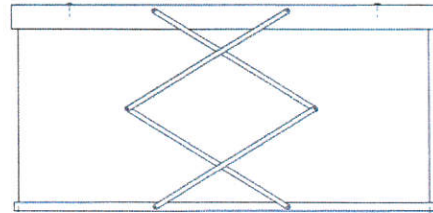
The roller blinds have been designed to effectively shade the driver from excessive light from coming into the driver's compartment.

Operation/ Procedure:

The roller blind is attached to the top frame of the windows. The blind has been equipped with a handle to allow the blind to be pulled down evenly every time.

Benefits:

- Window coverage from light filtration
- No guide required
- Easy pull down scissor design

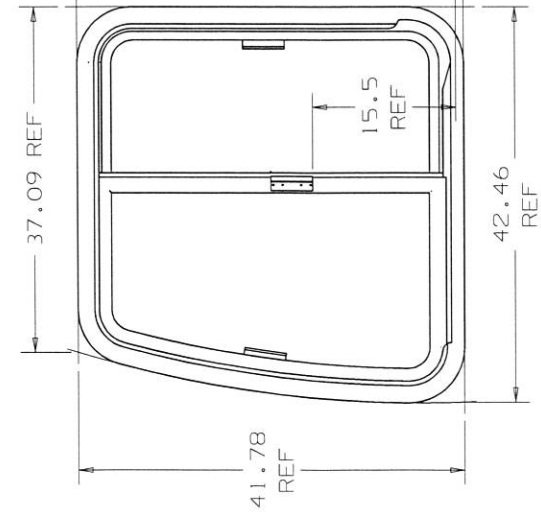


- Neutral grey color
- Maximum pull down coverage of 20 inches (51 cm)

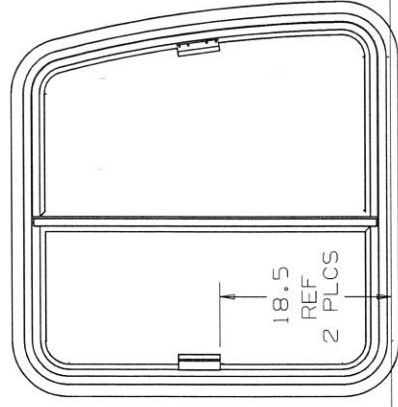
THE INFORMATION CONTAINED IN THIS DRAWING IS PROPRIETARY TO NEW FLYER INDUSTRIES CANADA ULC OR ITS AFFILIATES ("NEW FLYER"). THIS DRAWING AND ALL MATERIAL DELIVERED WITH IT MUST BE RETURNED TO NEW FLYER INDUSTRIES CANADA ULC OR ITS AFFILIATES IMMEDIATELY WITHOUT DELAY PRIOR TO WRITTEN CONSENT OF NEW FLYER. ONE OR MORE PATENTS MAY BE PENDING FOR THE PRODUCTS DEPICTED HEREIN. (C) 2014 NEW FLYER INDUSTRIES CANADA ULC. ALL RIGHTS RESERVED.

NOTE: FOR INSTALLATION DRAWINGS PLEASE REF

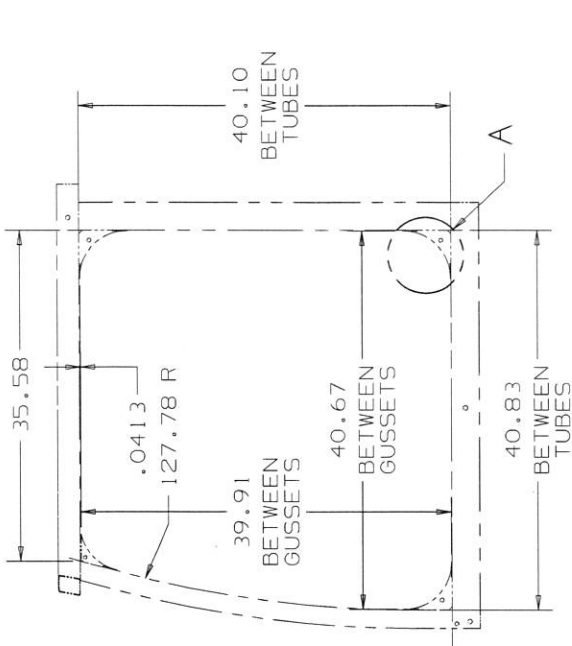
0 ATTACHED MRP BOM SHEET FOR PARTS LISTING



VIEW FROM OUTSIDE



VIEW FROM INSIDE.
CLAMP RING AND SEALS REMOVED FOR CLARITY.



TRUE VIEW ON STRUCTURAL OPENING

DRIVER'S WINDOW, MODEL MV157
RAPID REPLACEMENT GLAZING SYSTEM

GLAZING TYPE: 6 mm LAMINATED GLASS
SINGLE DENSITY (AS2)
TINT: 72% L.T. GREEN

FULL SLIDING, 12.0 INCH TRAVEL (LIMITS OF NON-EGRESS STYLE)
W/ STANDARD 25 TO 30 LBS SLIDING FORCE

FRAME: BLACK ANODIZED ALUMINUM

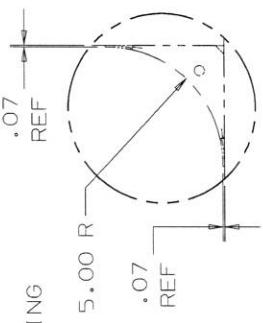
CLAMP RING STYLE
NON-EMERGENCY EGRESS

MANUFACTURER: STORM-TITE INDUSTRIES LTD
MANUFACTURER'S PART NUMBER: T.B.D.

TO FIT STRUCTURAL OPENING AS SHOWN
WITH AN AVERAGE 2.10" OVER-ALL WALL THICKNESS

HANDLES: FRONT INSIDE, CENTRE OUTSIDE,
REAR INSIDE W/LATCH

DETAIL A
SCALE 1:4
TYP 4 CORNERS



WINDOW SEAL AROUND STRUCTURE OPENING MUST
ABSORB PANEL TOTAL FLATNESS OF .000 - .125

AN INSTALLED WINDOW MUST PASS A WATER TEST SIMULATING RAIN.
THERE IS TO BE NO PRESENCE OF LEAKAGE AT ANY POINT IN THE TEST.
TESTING CONSISTS OF A CONSTANT STREAM OF WATER WITH A PRESSURE
RANGING FROM 35-40 PSI BEING APPLIED TO THE WINDOW FRAME/SEAL
FROM THE EXTERIOR OF THE COACH AT ANY LOCATION ON THE WINDOW
AND FROM ANY DIRECTION.

SEE NFIL SPEC 269236 FOR REGULATED ITEM REQUIREMENTS.

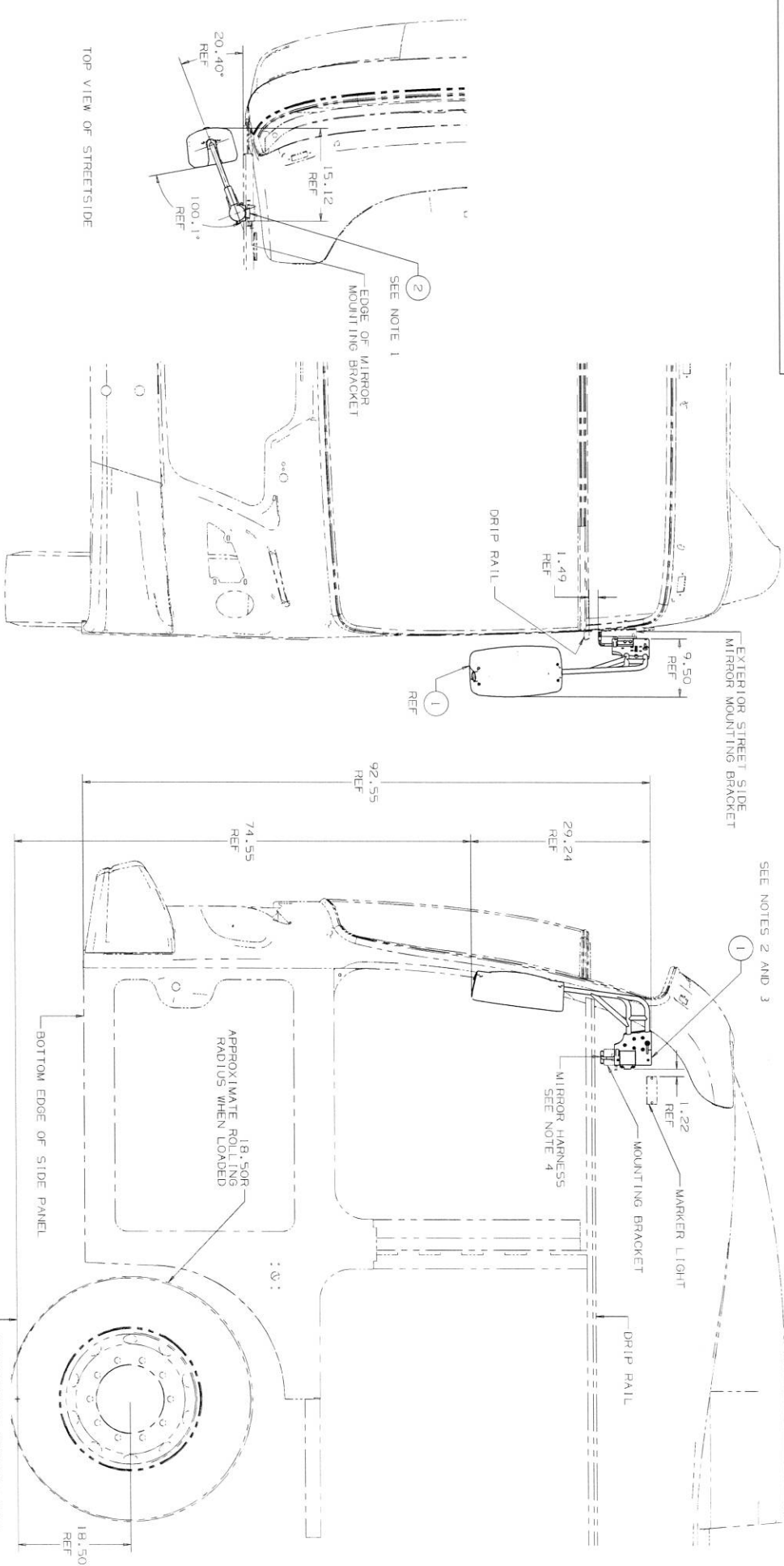
| |
|-------------------------------|
| DO NOT SCALE DRAWING |
| DIMENSIONS IN () ARE IN m.m. |
| THD ANGLE |
| DRAWN BY MADINA RAMIREZ |
| DATE (DD-MMM-YY) 24-MAR-14 |

| | | |
|------------------------|---|---------------------------------|
| MATERIAL SEE NOTES | UNSPEC'D TOLS. DEC. IN. | TITLE |
| WEIGHT T.B.D. | .XX .XXX HOLE DIA. BEND RADII. ANGLE TOL. | WINDOW-DRVR XCELSIOR NON-EGRESS |
| TREATMENT SEE NOTES | SIMILAR TO NONE | PART N° 426712 |
| | | SCALE 1 = 10 |
| | | SHEET 1 OF 1 |

| | | |
|-----|-----------------------|-----|
| REV | DESCRIPTION | ECO |
| E | NOTES REMOVED (A5,D3) | ECO |

THE INFORMATION CONTAINED IN THIS DRAWING IS PROPRIETARY TO NEWFLYER INDUSTRIES CANADA ULC. IT IS TO BE USED ONLY FOR THE PROJECT AND PURPOSE SPECIFIED HEREIN. IT IS TO BE RETURNED TO NEWFLYER INDUSTRIES CANADA ULC UPON REQUEST, AND SHALL NOT BE DISCLOSED TO THIRD PARTIES WITHOUT THE PRIOR WRITTEN CONSENT OF NEWFLYER INDUSTRIES CANADA ULC. ANY REUSE OF THIS DRAWING WITHOUT THE PRIOR WRITTEN CONSENT OF NEWFLYER INDUSTRIES CANADA ULC IS PROHIBITED. © 2013 NEWFLYER INDUSTRIES CANADA ULC. ALL RIGHTS RESERVED.

NOTE: FOR INSTALLATION DRAWINGS PLEASE REFER TO ATTACHED MAP BOX SHEET FOR PARTS LISTING



NOTES:

- 1) APPLY A COATING OF LUBRICANT TO THE INSIDE SURFACES OF THE DOVETAIL GROOVE OF EXISTING MOUNTING BASE.
- 2) POSITION THE MALE DOVETAIL TONGUE OF THE MIRROR INTO THE DOVETAIL GROOVE OF THE MOUNTING BASE AND SLIDE DOWN TO THE BOTTOM OF THE GROOVE.
- 3) SECURE THE CURBSIDE MIRROR ASSEMBLY IN PLACE USING THE SET SCREWS (30 IN-LBS).
- 4) PLUG MIRROR HARNESS INTO THE FEMALE PLUG PROVIDED IN THE BOTTOM OF THE MOUNTING BASE.

| |
|----------------------|
| DO NOT SCALE DRAWING |
| DIMENSIONS IN 1/4" |
| WE IN mm |
| THIRD ANGLE |
| DRAWN BY |
| THOMAS LEGGIS |
| DATE 100-MM-VY1 |
| 23-JUL-13 |

| REV | DESCRIPTION | ECO |
|-----|------------------------|-------------|
| 1 | RELEASED TO PRODUCTION | ECO 02/2013 |

| QTY | EA | ITEM | ILLUSTRATION | LIBRARY | TITLE | WEIGHT |
|-----|----|--------|--------------|---------|---------------------|--------|
| 1 | 1 | 528680 | | | ASSY-EXT MIRROR, SS | |

| | |
|-----------|--------------|
| MATERIAL | 303 |
| WEIGHT | 1.12 |
| TREATMENT | NOT REQUIRED |

| | |
|-----------|--------------|
| MATERIAL | 303 |
| WEIGHT | 1.12 |
| TREATMENT | NOT REQUIRED |

SCALE 1/8" = 1"

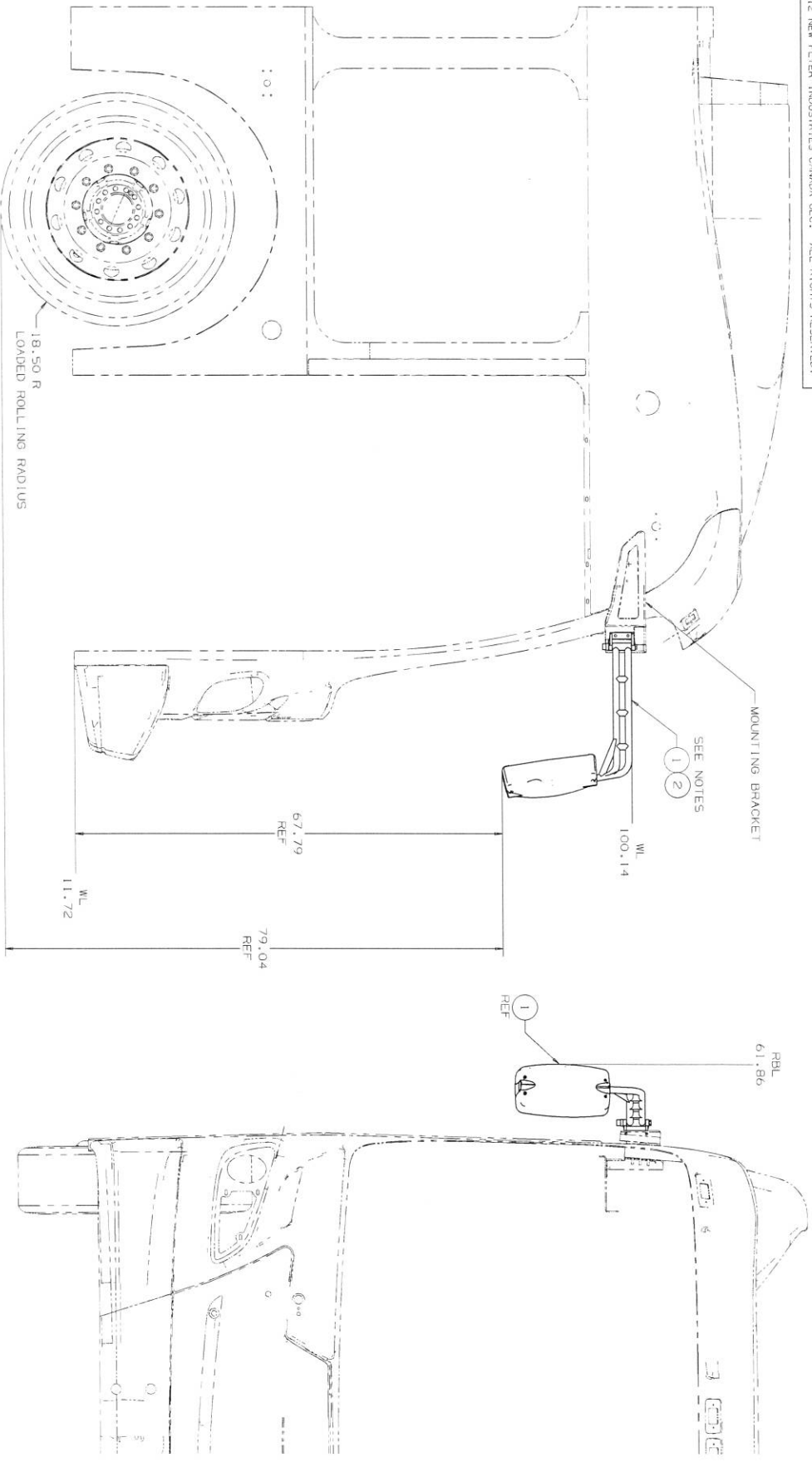
DRAWING N° 528681

SHEET 1 OF 1

REPORT ALL ERRORS TO ENR. DEPT.

THE INFORMATION CONTAINED IN THIS DRAWING IS PROPRIETARY TO NEW FLYER INDUSTRIES CANADA ULC. IT IS TO BE KEPT CONFIDENTIAL AND SHALL NOT BE DISCLOSED TO THIRD PARTIES WITHOUT THE WRITTEN PERMISSION OF NEW FLYER INDUSTRIES CANADA ULC. ALL RIGHTS RESERVED.

NOTE: FOR INSTALLATION DRAWINGS PLEASE REFER TO ATTACHED USER BOOK SHEET FOR PARTS LISTING



NOTES:

- 1) APPLY A COATING OF LUBRICANT TO THE INSIDE SURFACES OF THE DOVETAIL GROOVE OF EXISTING MOUNTING BASE.
- 2) POSITION THE MALE DOVETAIL TONGUE OF THE MIRROR INTO THE DOVETAIL GROOVE OF THE MOUNTING BASE AND SLIDE DOWN TO THE BOTTOM OF THE GROOVE.
- 3) APPLY A COATING OF LUBRICANT TO THE SET SCREWS PROVIDED IN THE MOUNTING BASE AND THEN SECURE THE CURBSIDE MIRROR ASSEMBLY IN PLACE USING THE SET SCREWS.
- 4) PLUG MIRROR HARNESS INTO THE FEMALE PLUG PROVIDED IN THE BOTTOM OF THE MOUNTING BASE.

| | |
|----------------------|---|
| DO NOT SCALE DRAWING | |
| DIMENSIONS IN 1 | |
| A/E IN mm | |
| THD ANGLE | 30-100-11° |
| BY | NAME DO-100-11° |
| DESIGN | R.K. 27-NOV-12 |
| CHK'D | |
| APP'D | |
| REV | DESCRIPTION |
| 1 | 1) FIGURE 1A, REVISION TO SIZE REVISED TYP 1. |
| 2 | 2) DIM 67.79, 79.04, 100.14, 11.72 |
| 3 | 3) DIM 61.86, 61.86, 61.86, 61.86 |
| 4 | 4) DIM 61.86, 61.86, 61.86, 61.86 |
| ECO | ECO 01.3531 |

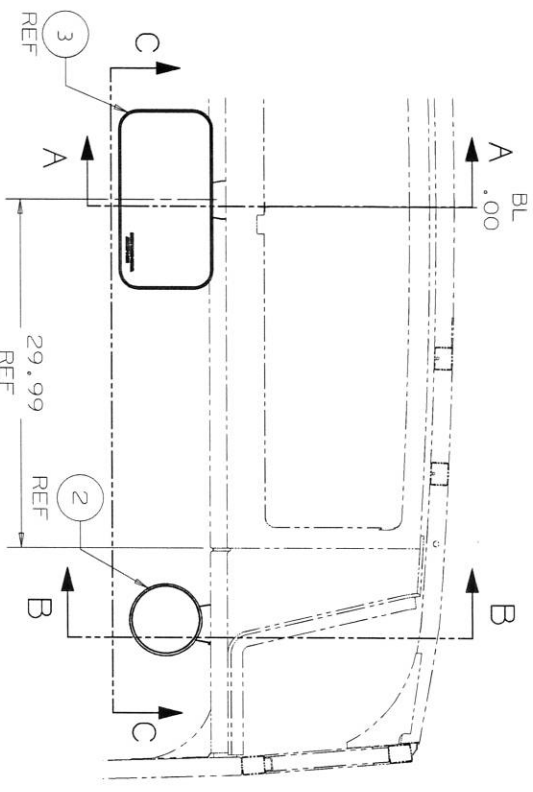
| | | | | | |
|----------------------|-----|------|----------|--------------------|--------|
| Q.DIG | EA | 2 | BILL/767 | LUBRICANT NTK-77 | WEIGHT |
| 1 | EA | 1 | 460948 | ASSY-EXT MIRROR,CS | |
| QTY | U/M | ITEM | PART NO. | DESCRIPTION | |
| MATERIAL | | | | | |
| SPEC'D TO: SAE J413 | | | | | |
| MATERIAL | | | | | |
| WEIGHT | | | | | |
| TREATMENT | | | | | |
| NOT REQUIRED | | | | | |
| SIMILAR TO | | | | | |
| SCALE 1:18 | | | | | |
| TITLE | | | | PART N° | |
| INSTL-EXT MIRROR, CS | | | | 460948 | |
| SCALE 1:18 | | | | SHEET 1 OF 1 | |

DRAWING N° 460948

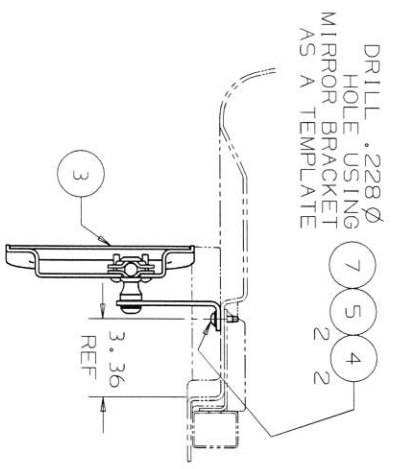
REPORT ALL ERRORS TO 870. 887.1

THE INFORMATION CONTAINED IN THIS DRAWING IS PROPRIETARY TO NEW FLYER INDUSTRIES CANADA ULC OR ITS AFFILIATES. IT IS NOT TO BE REPRODUCED, COPIED, OR TRANSMITTED IN ANY FORM OR BY ANY MEANS, WITHOUT THE PRIOR WRITTEN CONSENT OF NEW FLYER INDUSTRIES CANADA ULC. ALL RIGHTS RESERVED.

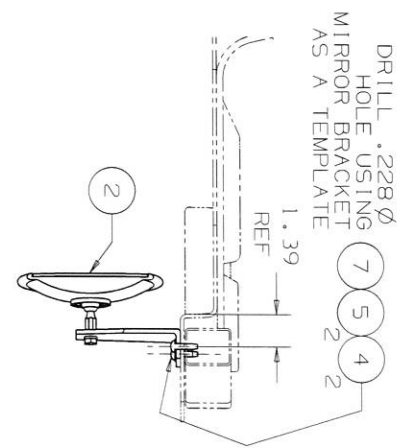
NOTE: FOR INSTALLATION DRAWINGS PLEASE REFER TO ATTACHED MRP BOM SHEET FOR PARTS LISTING



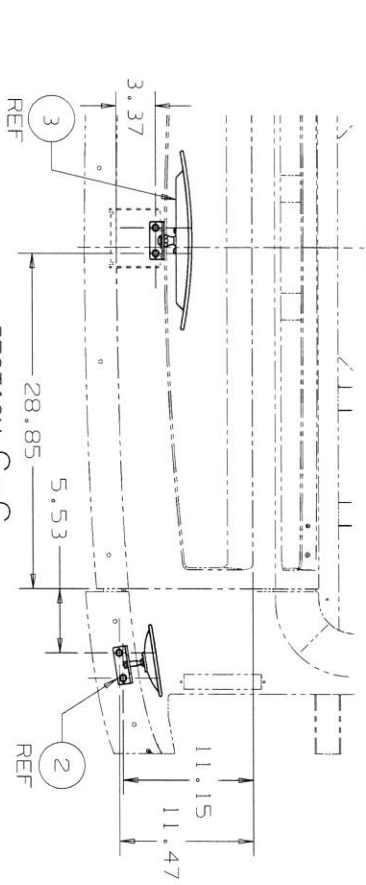
SECTION A-A
SCALE 1:4



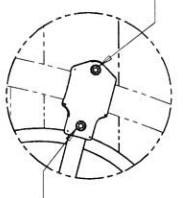
SECTION B-B
SCALE 1:4



LOOKING FORWARD AT STA 362.00



SECTION C - C

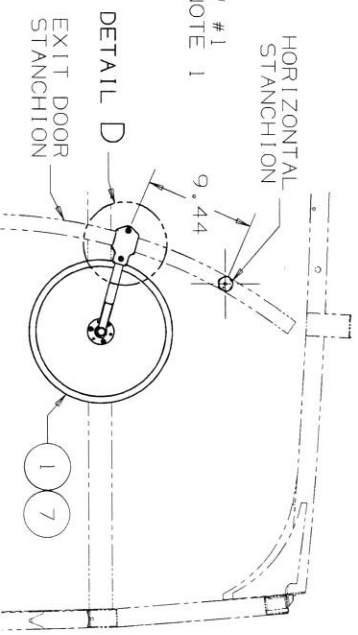


DETAIL D
SCALE 1:4



DETAIL D
SCALE 1:4

LOOKING FORWARD AT STA 644.00



- NOTES:
- 1) -HAND TIGHTEN SCREWS ON MIRROR ARM.
 - TORQUE SCREW #1 TO 4 FT-LBS. BEFORE SCREW #2
 - ENSURE SCREW #2 TO 4 FT-LBS.
 - TORQUE SCREW #2 TO 4 FT-LBS.

| QTY | U/M | ITEM | PART NO. | DESCRIPTION | WEIGHT |
|------|-----|------|------------|-------------------------|--------|
| 0.01 | EA | 7 | 5927494 | LOC TITE - THREAD | - |
| 4 | EA | 5 | 50M04000BK | WASHER-FLAT 1/4 BLK | - |
| 4 | EA | 4 | 34504016BK | SCREW-PH CR BLK 1/4 20 | - |
| 1 | EA | 3 | 271960 | MIRROR-INT RR VIEW,CVX | - |
| 1 | EA | 2 | 268392 | MIRROR-INTERIOR,6" FLAT | - |
| 1 | EA | 1 | 268390 | MIRROR-INTERIOR,12" CVX | - |

DO NOT SCALE DRAWING

DIMENSIONS IN () ARE IN M.M.

THD ANGLE

BY NAME DD-MMM-YY

DRAWN C.S.D. 06-FEB-12

CHK'D

APP'D

- 1) ITEM 6, #51W04000BK QTY 4-DELETED
- 2) DIMENSION 84.95 DELETED - WAS 34.90 (A4)
- 3) DIMENSION 84.95 DELETED (B1, B5, C1-2, C5, D2-5)
- 4) DIMENSION 84.95 DELETED (A5, D5)
- 5) DIMENSION 84.95 DELETED (A5, D5)
- 6) MIRROR CL LABEL DELETED (O5)
- 7) DIMENSION 29.99 WAS 29.95 (C4)
- 8) REF DELETED (A4)

5

4

3

2

1

DRY ALL ERRORS

NO. DEPT.

SHEET 1 OF 1

SCALE 1:8

INSTL-INTERIOR MIRRORS

NEW FLYER

PART N° 347504

SALES INFORMATION BULLETIN

#422-001 | Model: Xcel­sior® | Lengths: 35', 40' and 60' | Propulsion: All

Secure Diagnostics Station (SDS)

Product Features

The SDS is a standard feature on all Xcel­sior® models. Its streamlined design has dual functionality, providing a barrier behind the driver and offering a secure location for unique customer-specific electronics.

In the SDS sensitive electronic equipment can be mounted to easily accessible slide-out trays. The tray spacing is adjustable to account for a wide variety of custom electronics used in the transit industry. The SDS has capacity for four (4) of these trays which are 19.50" x 15.31" (495 mm x 389 mm) in size and designed to minimize vibration.

Additional features of the SDS include:

- A four (4) pocket take-one holder installed on the aisle-face-forward side of the SDS box
- A lower 1" x 18" (25 mm x 457 mm) LED strip light conveniently located 30" (762 mm) from the floor to provide aisle lighting at the front of the bus
- Quarter-turn latches to ensure security
- Space behind the driver for an optional tool/driver's storage box
- Space behind the driver for a fire extinguisher
- Racks and trays painted white to enhance visibility.

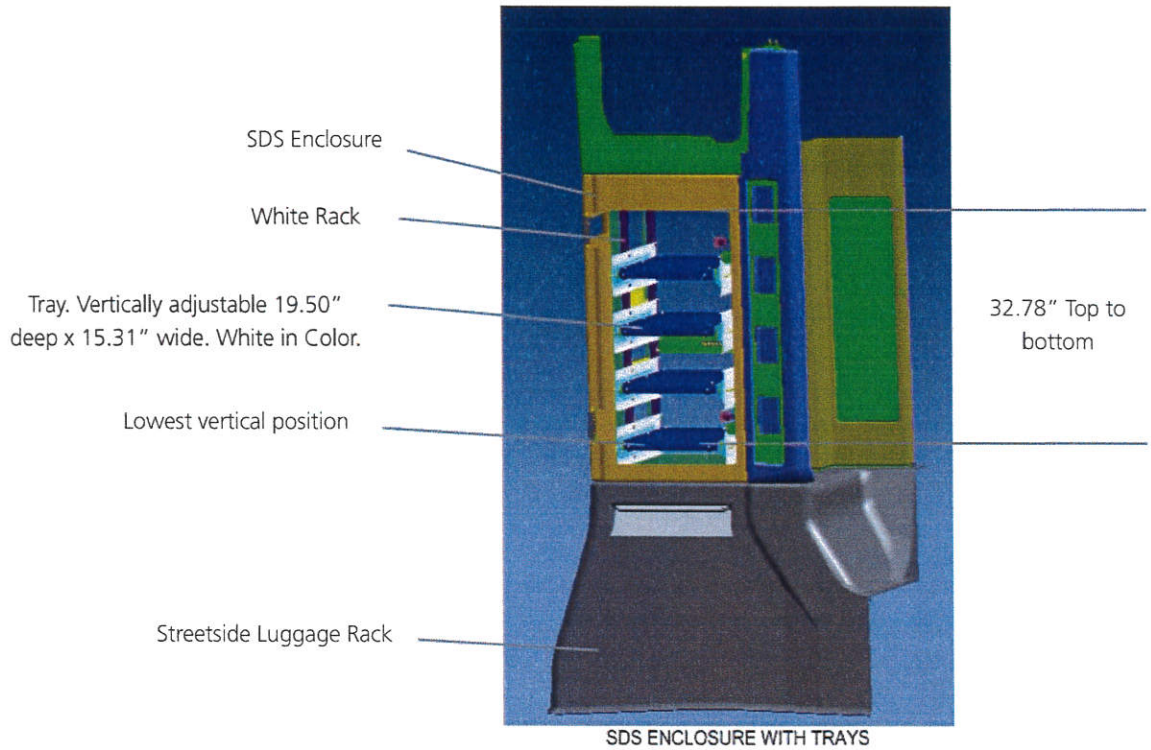
Benefits

Provides a convenient and secure location for a variety of important electronic equipment such as:

- Radio
- DVR (digital video recorder)
- AVA (automatic voice annunciation) module
- AVL (automatic vehicle location) module
- APC (automatic passenger counter) module
- Wireless network devices module
- Brake stroke monitoring module
- Diagnostic ports



SALES INFORMATION BULLETIN



Service and repair

The electronic equipment in the SDS can be easily worked on with the slide-out tray design. The egress-type window behind the SDS box also allows repairs from outside the bus. Since the SDS comes with quarter-turn key, the access to the electronic equipment within it can be controlled or restricted by maintenance personnel.