



BOARD of SUPERVISORS



City Hall  
1 Dr. Carlton B. Goodlett Place, Room 244  
San Francisco 94102-4689  
Tel. No. (415) 554-5184  
Fax No. (415) 554-5163  
TDD/TTY No. (415) 554-5227

## MEMORANDUM

### LAND USE AND TRANSPORTATION COMMITTEE

### SAN FRANCISCO BOARD OF SUPERVISORS

TO: Supervisor Myrna Melgar, Chair, Land Use and Transportation Committee

FROM: Erica Major, Assistant Clerk, Land Use and Transportation Committee

DATE: July 27, 2021

SUBJECT: **COMMITTEE REPORT, BOARD MEETING**  
Tuesday, July 27, 2021

The following file should be presented as a **COMMITTEE REPORT** at the Board meeting, Tuesday, July 27, 2021. This item was acted upon at the Committee Meeting on Monday, July 26, 2021, at 1:30 p.m., by the votes indicated.

**Item No. 72**                      **File No. 210495**

Ordinance designating the Canary Island Pine (*Pinus canariensis*) tree located at 2251 Filbert Street as a landmark tree pursuant to the Public Works Code; making findings supporting the designation; and directing official acts in furtherance of the landmark tree designation, as defined herein.

#### **RECOMMENDED AS A COMMITTEE REPORT**

Vote: Supervisor Myrna Melgar - Aye  
Supervisor Dean Preston - Aye  
Supervisor Aaron Peskin - Aye

cc: Board of Supervisors  
Angela Calvillo, Clerk of the Board  
Alisa Somera, Legislative Deputy  
Anne Pearson, Deputy City Attorney  
Kristen Jensen, Deputy City Attorney

1 [Landmark Tree Designation - Canary Island Pine - 2251 Filbert Street]

2

3 **Ordinance designating the Canary Island Pine (*Pinus canariensis*) tree located at 2251**  
4 **Filbert Street as a landmark tree pursuant to the Public Works Code; making findings**  
5 **supporting the designation; and directing official acts in furtherance of the landmark**  
6 **tree designation, as defined herein.**

7

8 NOTE: **Unchanged Code text and uncodified text** are in plain Arial font.  
9 **Additions to Codes** are in *single-underline italics Times New Roman font*.  
10 **Deletions to Codes** are in *strikethrough italics Times New Roman font*.  
11 **Board amendment additions** are in double-underlined Arial font.  
12 **Board amendment deletions** are in ~~strikethrough Arial font~~.  
13 **Asterisks (\* \* \* \*)** indicate the omission of unchanged Code  
14 subsections or parts of tables.

12

13 Be it ordained by the People of the City and County of San Francisco:

14

15 Section 1. Findings.

16 (a) Public Works Code Section 810 establishes a procedure for the nomination,  
17 designation, and removal of landmark trees.

18 (b) The Board of Supervisors adopted landmark tree designation criteria in Resolution  
19 No. 440-06, codified those criteria in Public Works Code Section 810(f)(4), and subsequently  
20 amended the criteria in Resolution No. 63-09. Copies of these Resolutions are on file with the  
21 Clerk of the Board of Supervisors in File No. 100880, and are incorporated herein by  
22 reference.

23 (c) On May 18, 2020, the property owner of 2251/2253 Filbert Street (Assessor's  
24 Parcel Block No. 0534, Lot No. 032) nominated the Canary Island Pine located on the  
25 property for landmark status.

1 (d) The Urban Forestry Council examined the subject tree based on the adopted  
2 landmark tree designation criteria, including (1) the rarity of the tree, (2) the physical attributes  
3 of the tree, (3) the environmental value of the tree, and (4) the cultural value of the tree.  
4 Based on these designation criteria, the Urban Forestry Council determined that the subject  
5 tree qualified as a landmark tree, and on September 25, 2020 adopted a resolution,  
6 Resolution File No. 2020-06-UFC, reflecting this determination. This resolution is on file with  
7 the Clerk of the Board of Supervisors in File No. 210495, and is incorporated herein by  
8 reference. The Board adopts these findings as its own.

9

10 Section 2. Landmark Tree Designation.

11 (a) Based on the above mentioned findings, the Board of Supervisors designates the  
12 Canary Island Pine (*Pinus canariensis*) tree at 2251 Filbert Street, Assessor's Parcel Block  
13 No. 0534, No. Lot 032, as a landmark tree.

14 (b) The Board of Supervisors directs the Department of Public Works to record the  
15 landmark designation of this tree on the property record of 2251 Filbert Street (Assessor's  
16 Parcel Block No. 0534, No. Lot 032) and list the tree in the Department's Official Book of  
17 Landmark Trees.

18 //  
19 //  
20 //  
21 //  
22 //  
23 //  
24 //  
25 //



1  
2  
3  
4  
5  
6  
7  
8  
9  
10  
11  
12  
13  
14  
15  
16  
17  
18  
19  
20  
21  
22  
23  
24  
25

//

Section 3. Effective Date. This ordinance shall become effective 30 days after enactment. Enactment occurs when the Mayor signs the ordinance, the Mayor returns the ordinance unsigned or does not sign the ordinance within ten days of receiving it, or the Board of Supervisors overrides the Mayor’s veto of the ordinance.

APPROVED AS TO FORM:  
DENNIS J. HERRERA, City Attorney

By:     /s/ Robb Kapla      
ROBB KAPLA  
Deputy City Attorney

n:\legana\as2021\2100371\01529677.docx

## **LEGISLATIVE DIGEST**

[Landmark Tree Designation - Canary Island Pine - 2251 Filbert Street]

**Ordinance designating the Canary Island Pine (*Pinus canariensis*) tree located at 2251 Filbert Street as a landmark tree pursuant to the Public Works Code; making findings supporting the designation; and directing official acts in furtherance of the landmark tree designation, as defined herein.**

### Existing Law

Section 810 of the Public Works Code establishes a procedure for the nomination, designation, and removal of landmark trees.

### Amendments to Current Law

This Ordinance designates the Canary Island Pine (*Pinus canariensis*) tree located at 2251 Filbert Street (Assessor's Parcel Block No. 0534, Lot No. 032) as a landmark tree in accordance with the procedures set forth in Public Works Code. This Ordinance also directs the Department of Public Works to record the landmark designation of this tree on the subject property and list the tree in the Department's Official Book of Landmark Trees.

### Background Information

The property owner of 2251/2253 Filbert Street nominated the tree for landmark status on May 18, 2020. On September 25, 2020, at a duly noticed public hearing, the Urban Forestry Council ("Council") considered the nomination and, applying the landmark tree designation criteria, determined the tree's physical attributes and the social, environmental, economic, and cultural benefits that the tree provides to the neighborhood and City as a whole warrant landmark designation (Resolution File No. 2020-06-UFC).

n:\legana\as2021\2100371\01529785.docx



**SF Environment**  
Our home. Our city. Our planet.  
A Department of the City and County of San Francisco

London N. Breed  
Mayor

Deborah O. Raphael  
Director

October 14, 2020

Ms. Angela Calvillo, Clerk of the Board  
Board of Supervisors  
1 Dr. Carlton B. Goodlett Place  
San Francisco, CA 94102

**RE: San Francisco Urban Forestry Council vote to inform the Board of Supervisors that the Canary Island Pine (*Pinus canariensis*), located at 2251 Filbert Street, Assessor's Block 0534, Lot 032 meets the criteria for landmark tree status.**

Dear Ms. Calvillo:

In June 2020, the Urban Forestry Council received a Landmark Tree nomination from Patricia Henle for the Canary Island Pine (*Pinus canariensis*), located on her property at 2251/2253 Filbert Street, Assessor's Block 0534, Lot 032.

At their meeting on September 25, 2020, the Urban Forestry Council found that the tree meets the criteria for landmark tree status. Upon a motion by Member Flanagan, with a second by Member Keller, the Council found that the Canary Island Pine (*Pinus canariensis*), located at 2251/2253 Filbert Street, Assessor's Block 0534, Lot 032 meets the criteria for landmark status and approved Resolution File No. 2020-06-UFC. (Ayes: Chair Sullivan, Vice Chair Crawford, Members Keller, Flanagan, Vaisset-Fauvel, Lacan, Polony, Xochitl Flores, Spigelman, Mike Sullivan, Stephens, Troxel, and Fischer; Noes: None; Absent: Nagle and Hernandez-Gomez)

This letter and the enclosed materials from the September 25, 2020, Urban Forestry Council Meeting serve as written findings and nomination recommendations from the Urban Forestry Council.

If you have any questions, or would like additional information, I can be reached at 415-355-3733 or by email at [peter.brastow@sfgov.org](mailto:peter.brastow@sfgov.org).

Sincerely,

Peter Brastow  
Healthy Ecosystems and Urban Forestry Coordinator

Enclosure:  
Urban Forestry Council Hearing Explanatory Documents

1 [Resolution endorsing the Canary Island Pine (*Pinus canariensis*) tree at 2251 Filbert  
2 Street for landmark tree status]

3 **Resolution endorsing the Canary Island Pine (*Pinus canariensis*) tree at 2251**  
4 **Filbert Street (Assessor's Block 0534, Lot 032) for Landmark Status, pursuant to**  
5 **Public Works Code Section 810(b).**

6 WHEREAS, Public Works Code, Article 16, Section 810 charges the Urban  
7 Forestry Council to evaluate nominated landmark trees using criteria approved by the  
8 Board of Supervisors; and,

9 WHEREAS, The Canary Island Pine (*Pinus canariensis*) tree at 2251 Filbert  
10 Street fulfills the Landmark Tree criteria developed by the Urban Forestry Council,  
11 including its physical attributes, environmental benefits, and cultural support; and,

12 WHEREAS, This tree provides social, environmental and economic benefits to  
13 the property, neighborhood and city; now, therefore be it,

14 RESOLVED, That the San Francisco Urban Forestry Council recommends this  
15 tree for landmark status to the Board of Supervisors and urges the Board of Supervisors  
16 to protect this tree as a landmark tree.

17  
18 I hereby certify that this resolution was adopted at the Urban Forestry Council's  
19 regular meeting on September 25, 2020.

20 

21 Peter Brastow, Urban Forestry Coordinator

  
Nicholas Crawford, Council Vice-Chair



**SF Environment**

**Our home. Our city. Our planet.**

A Department of the City and County of San Francisco

London N. Breed  
Mayor

Deborah O. Raphael  
Director

**City and County of San Francisco  
Department of the Environment  
Urban Forestry Council**

**NOTICE OF MEETING AND AGENDA**

**Friday, September 25, 2020, 8:30 a.m.  
Remote meeting via web conference**

**Refer to the “Remote Access to Information and Participation” section below for instructions.**

Council Members: Dan Flanagan, Nicholas Crawford (Vice Chair, San Francisco Public Works), Jillian Keller, Morgan Vaisset-Fauvel, Igor Lacan, Ildiko Polony, Pamela Nagle, Edgar Xochitl Flores, Andrew Sullivan, Mike Sullivan, Blake Troxel (Presidio Trust), Damon Spigelman (San Francisco Public Utilities Commission), Oscar Hernandez-Gomez (San Francisco Planning Department), Chris Fischer (Port of San Francisco) and Matthew Stephens (San Francisco Recreation and Park Department).

**Order of Business**

Public comment will be taken before the Council takes action on any item.

- 1. Call to Order and Roll Call.**
- 2. Adoption of Minutes of the August 25, 2020 Urban Forestry Council Regular Meeting.** (Explanatory Document: August 25, 2020 Draft Minutes) (Discussion and Action)
- 3. General Public Comment:** Members of the public may address the Council on matters that are within the Council's jurisdiction and are not on today's agenda.
- 4. Election of Urban Forestry Council Officers.** (Discussion and Action)
- 5. Discussion on San Francisco Public Works Bureau of Urban Forestry Budget.** Speaker, Nicholas Crawford, San Francisco Public Works (Discussion)
- 6. Discussion and possible action to recommend, for adoption by the Board of Supervisors, uniform criteria, rules, and procedures, governing determinations to remove Landmark trees pursuant to San Francisco Public Works Code Article 16 Section 810(f)(1).** Speaker, Mike Sullivan (Explanatory Document, Public Works Code Article 16 Section 810(f)(1) and Memo re Proposed Changes to Article 16) (Discussion and Possible Action)
- 7. Hearing on nomination for Landmark Tree Status of the Pine (*Pinus sp.*), located at 2251 Filbert Street, San Francisco, CA 94123; Assessor's Block 0534, Lot 032.** The Council will hold a hearing to determine whether the tree nominated at the above location meets the criteria for designation as a landmark tree to forward findings to the Board of Supervisors. (Explanatory Documents:

Resolution File No. 2020-06-UFC, Nomination Form, Sullivan Evaluation, Nagle Evaluation, Keller Evaluation, Spigelman Evaluation, Vaisset-Fauvel Evaluation, Landmark Tree Committee Report, September 03, 2020 Landmark Tree Committee Meeting Draft Minutes) (Discussion and Action)

**8. Discussion of the Urban Forestry Council Strategic Plan.** Speaker, Nicholas Crawford, Vice Chair of Urban Forestry Council (Explanatory Document: UFC Strategic Plan Priority Matrix) (Discussion)

**9. Committee Reports:** (Discussion)

**Planning & Funding Committee.** Igor Lacan, Committee Chair.

**Landmark Tree Ad Hoc Committee.** Mike Sullivan, Committee Chair.

**10. Staff Report.** Peter Brastow, Urban Forestry Coordinator, San Francisco Department of the Environment (Discussion)

**11. Urban Forestry Council Member Announcements.** (Discussion)

**12. New Business/Future Agenda Items.** (Discussion and Possible Action)

**13. Adjournment.**

The next meeting of the Urban Forestry Council is scheduled for Friday, October 27, 2020 at 6:00 p.m. In compliance with the San Francisco Health Officer's Order No. C19-07c, directing all individuals to "shelter in place", Public meetings, panels and other advisory bodies will continue on a remote conferencing basis only. Find out about upcoming deadlines, public hearings, and meetings. Search the SFEnvironment.org website archived minutes and agenda.

## Remote Access to Information and Participation

This meeting will be held remotely using video conferencing, through the WebEx Meetings platform, and by telephone for members of the public who are unable to attend using computers or smart devices.

## Attending the Meeting: Watch or Listen

Members of the public have the following options for attending the meeting:

Option 1: Watch the meeting using a computer or smart device by clicking on the following link:

<https://ccsf.webex.com/ccsf/onstage/g.php?MTID=ea3fcbce2da96b6fb5393c92ad58562e2>

- If you are able to and would like to watch via your computer, please follow these instructions: i) Click on the link above; ii) Enter your first name, last name, and email address if desired; iii) Click "Join by Browser" (directly beneath the "Join Now" button);
- If you are able to watch via your smart mobile device: i) Download the Webex Meetings application; ii) Click on the link above; iii) Click "Join"; iv) Enter your name and email; v) Click "Ready to Join".

Option 2: Join the meeting by phone if you do not have access to a computer or smart device.

Dial: **415-655-0001** and then enter the Access Code: **146 594 6504**

## Participating During Public Comment

Members of the public will have opportunities to participate during public comment. The public is asked to wait for the particular agenda item before making a comment on that item. Comments will be addressed in the order they are received. When the moderator announces that the Committee is taking public comment, members of the public can:

Participate over the phone by pressing \*3 (this step is very important, as it will activate the "Raise Hand" icon in the Participant window).

Depending on the number of people also in line ahead of you, you may have to wait before it is your opportunity to speak. When it is your turn, you will be notified that your line has been unmuted, and it will be your opportunity to speak. Your line will be muted again when your allotted time expires.

In accordance with Governor Gavin Newsom's statewide order for all residents to "Stay at Home" - and the numerous local and state proclamations, orders and supplemental directions - aggressive directives have been issued to slow down and reduce the spread of the COVID-19 virus. Copies of explanatory documents are available, 1) on the Urban Forestry Council webpage <https://sfenvironment.org/about/taskforce/urban-forestry-council>; or (2) upon request to the Commission Affairs Manager, at telephone number 415-355-3709, or via e-mail at [katie.chansler@sfgov.org](mailto:katie.chansler@sfgov.org).

### **Important Information**

The ringing of and use of cell phones, pagers and similar sound-producing electronic devices are prohibited at this meeting. Please be advised that the Chair may order the removal from the meeting room of any person(s) responsible for the ringing or use of a cell phone, pager, or other similar sound-producing electronic devices.

### **Public Comment**

At this time, members of the public may address the Committee on items of interest that are within the subject matter jurisdiction of the Committee but are not on today's agenda, including to request items they may wish to be on a future agenda. Public comment will be taken following each agenda item. Each member of the public may address the Committee for up to three minutes, unless otherwise announced by the Chair. If it is demonstrated that the comments by the public will exceed 15 minutes, the Chair may continue Public Comment to another time during the meeting.

NOTE: Persons unable to attend the meeting may submit to the Committee, by the time the proceedings begin, written comments regarding the agenda items above. These comments will be made a part of the official public record and shall be brought to the attention of Committee Members. Any written comments should be sent to: Commission Affairs Manager, Department of the Environment, [katie.chansler@sfgov.org](mailto:katie.chansler@sfgov.org), by 5:00 p.m. on the day prior to the hearing. Written public comment received by the Council will be posted as an attachment to the minutes.

The Brown Act forbids the Committee from taking action or discussing any item or issue not appearing on the posted agenda. This rule applies to issues raised in public comment as well. In response to public comment, not on an agenda item, the Committee is limited to:

1. Briefly responding to statements made or questions posed by members of the public, or
2. Request staff to report back on a matter at a subsequent meeting, or
3. Directing staff to place the item or issue on a future agenda (Government Code Section 54954.2(a).)

### **Disability Access**

The Urban Forestry Council meetings will be held virtually. The Committee meeting rooms are closed.

The following services are available on request 48 hours prior to the meeting; except for Monday meetings, for which the deadline shall be 4:00 p.m. of the last business day of the preceding week: For American sign language interpreters or the use of a reader during a meeting, a sound enhancement system, and/or alternative formats of the agenda and minutes, please contact the



Department of Environment at (415) 355-3709 or [katie.chansler@sfgov.org](mailto:katie.chansler@sfgov.org) to make arrangements for the accommodation. Late requests will be honored, if possible.

In order to assist the City's efforts to accommodate persons with severe allergies, environmental illnesses, multiple chemical sensitivity or related disabilities, attendees at public meetings are reminded that other attendees may be sensitive to various chemical based products. Please help the City accommodate these individuals. Individuals with chemical sensitivity or related disabilities should call the Mayor's Office on Disability at (415) 554-6789 or (415) 554-6799 (TTY) for additional information.

### **Language Access**

Per the Language Access Ordinance (Chapter 91 of the San Francisco Administrative Code), Chinese, Spanish and or Filipino (Tagalog) interpreters will be available upon requests. Meeting Minutes may be translated, if requested, after they have been adopted by the Commission. Assistance in additional languages may be honored whenever possible. To request assistance with these services please contact the Commission Affairs Manager at 415-355-3700 or [katie.chansler@sfgov.org](mailto:katie.chansler@sfgov.org), at least 48 hours in advance of the hearing. Late requests will be honored if possible.

### **語言服務**

根據語言服務條例(三藩市行政法典第91章)·中文、西班牙語和/或菲律賓語(泰加洛語)傳譯人員在收到要求後將會提供傳譯服務。翻譯版本的會議記錄可在委員會通過後透過要求而提供。其他語言協助在可能的情況下也將可提供。上述的要求·請於會議前最少48小時致電 415-355-3709或電郵至[katie.chansler@sfgov.org](mailto:katie.chansler@sfgov.org)向委員會秘書提出。逾期提出的請求·若可能的話·亦會被考慮接納。

### **Acceso A Idioma**

De acuerdo con la Ordenanza de Acceso a Idiomas "Language Access Ordinance" (Capítulo 91 del Código Administrativo de San Francisco "Chapter 91 of the San Francisco Administrative Code") intérpretes de chino, español y/o filipino (tagalo) estarán disponibles de ser requeridos. Las minutas podrán ser traducidas, de ser requeridas, luego de ser aprobadas por la Comisión. La asistencia en idiomas adicionales se tomará en cuenta siempre que sea posible. Para solicitar asistencia con estos servicios favor comunicarse con el Secretario de la Comisión al 415-355-3709, o [katie.chansler@sfgov.org](mailto:katie.chansler@sfgov.org) por lo menos 48 horas antes de la reunión. Las solicitudes tardías serán consideradas de ser posible.

### **Access Sa Wika**

Ayon sa Language Access Ordinance (Chapter 91 ng San Francisco Administrative Code), maaaring mag-request ng mga tagapagsalin sa wikang Tsino, Espanyol, at/o Filipino (Tagalog). Kapag hiniling, ang mga kaganapan ng miting ay maaring isalin sa ibang wika matapos ito ay aprobahan ng komisyon. Maari din magkaroon ng tulong sa ibang wika. Sa mga ganitong uri ng kahilingan, mangyaring tumawag sa Clerk ng Commission sa 415-355-3709, o [katie.chansler@sfgov.org](mailto:katie.chansler@sfgov.org) sa hindi bababa sa 48 oras bago mag miting. Kung maari, ang mga late na hiling ay posibleng pagbibigyan.

## **Know Your Rights Under the Sunshine Ordinance (Chapter 67 of the San Francisco Administrative Code)**

Government's duty is to serve the public, reaching its decisions in full view of the public. Commissions, boards, councils, and other agencies of the City and County exist to conduct the people's business. This ordinance assures that deliberations are conducted before the people and that City operations are open to the people's review. For more information on your rights under the Sunshine Ordinance or to report a violation of the ordinance, contact the Sunshine Ordinance Task Force, City Hall, Room 244, One Dr. Carlton B. Goodlett Place, San Francisco, CA 94102-4683 at Phone No.: (415) 554-7724; Fax No.: (415) 554-5163; E-mail: [soff@sfgov.org](mailto:soff@sfgov.org). Copies of the Sunshine



Ordinance can be obtained from the Clerk of the Sunshine Task Force, the San Francisco Public Library and on the City's website at [www.sfgov.org](http://www.sfgov.org).

### **Lobbyist Registration and Reporting Requirements**

Individuals and entities that influence or attempt to influence local legislative or administrative action may be required by the San Francisco Lobbyist Ordinance [SF Campaign & Governmental Conduct Code §2.100, et. seq] to register and report lobbying activity. For more information about the Lobbyist Ordinance, please contact the Ethics Commission at: 25 Van Ness Avenue, Suite 220, San Francisco, CA 94102; telephone (415) 252-3100, fax (415) 252-3112; web site at [www.sfgov.org/ethics](http://www.sfgov.org/ethics).

---

Peter Brastow, Healthy Ecosystems, Biodiversity and Urban Forestry Coordinator  
TEL: (415) 355-3733; FAX: 415-554-6393  
Posted: September 21, 2020



**SF Environment**

**Our home. Our city. Our planet.**

A Department of the City and County of San Francisco

London N. Breed  
Mayor

Deborah O. Raphael  
Director

# Urban Forestry Council Landmark Tree Committee Report

Submitted by Landmark Tree Committee Chair, Mike Sullivan on September 25, 2020

**Committee members present at the September 03, 2020 Landmark Tree Ad Hoc Committee meeting:** Jillian Keller, Pam Nagle, Morgan Vaisset-Fauvel and Michael Sullivan

**Street address of nominated tree:** 2251 Filbert Street

**Common name:** Canary Island pine OR Ponderosa pine

**Scientific name:** *Pinus sp.*

## Summary

**The Landmark Tree Committee recommends that the Urban Forestry Council approve this nomination and make the determination that this tree qualifies for landmark tree status.** The nomination was supported by a Committee vote of 4-0. The Committee supported this nomination based on the tree's physical attributes and environmental benefits. The report below summarizes the Committee's discussion and criteria used in its decision.

## **Rarity**

The question of the rarity of the tree is complicated by the lack of resolution of its identification to the species level. Some Landmark Tree Committee members have identified the tree as a Ponderosa pine and others as a Canary Island pine. Originally, the tree was nominated as an Aleppo pine. A ponderosa pine would be rare indeed for San Francisco, and also a California native that grows in several counties in the Bay Area, though not in the fog belt. Canary Island pines are more commonly planted in the city - over 200 individuals of Canary Island pine are in the street tree network.

## **Physical Attributes**

The characteristics that committee members stressed were the large size of the pine, its age (at least 100 years old), its aesthetically and structurally sound form, and its overall vigor and health. "Majestic" is the word that one committee member used to describe the tree.

## **Historical**

The nomination included information about the tree being a community feature before fences and other newer houses in the neighborhood. The house itself was built in the very early 1900s, so the property has an overall historic feel.

**Environmental**

Given the size of the tree, birds and squirrels, reportedly nest there. There is currently at least one squirrel nest in the tree. A coast live oak tree is also present on the property, and thus creates a kind of little private conservation habitat area for insects and birds.

**Cultural**

Enthusiastic declarations from an elder neighbor and a tenant of the building indicate some level of neighborhood support and appreciation.

# Landmark Tree Nomination Form

**Disclaimer:** Any information you include on this form will be part of the public record. Anyone may request to see the information you submit for a landmark tree nomination. For more legal information, see the last page of this form.

### Who can nominate a landmark tree?

- The Board of Supervisors, Planning Commission, and Landmarks Preservation Advisory Board may nominate a tree.
- The head of a City department or agency may nominate a tree on property under their jurisdiction. City departments and agencies should conduct an internal approval process before nominating a tree.
- A property owner may nominate a tree on his or her property.
- A member of the public may ask an authorized nominator to nominate a tree.

### Please note that a permit will be required for any future removal of a landmark tree.

Pursuant to Ordinance 0017-06 and Public Works Code 810, the Urban Forestry Council requests the following information.

I am one of the following authorized nominators

- Property owner
- Board of Supervisors (through resolution)
- Head of a city department or agency
- Planning Commission (through resolution)
- Historic Preservation Commission (through resolution)

Authorized nominator (Supervisor, Planning Commission, Landmarks Advisory Board, Head of City Department, Property Owner):

Member of the public who initiated nomination (if applicable):

\_\_\_\_\_  
Name

\_\_\_\_\_  
Address

\_\_\_\_\_  
Address

\_\_\_\_\_  
Phone (day)

\_\_\_\_\_  
Fax #

\_\_\_\_\_  
Email

Patricia E. Henle  
\_\_\_\_\_  
Name

1398 Post Street  
\_\_\_\_\_  
Address

San Francisco  
\_\_\_\_\_  
Address

415 - 407 - 5850 (cell)  
\_\_\_\_\_  
Phone (day)

415 - 929 - 3476 (Fax)  
\_\_\_\_\_  
Fax #

PHenle@Henlelaw.com  
\_\_\_\_\_  
Email

I am an authorized nominator and I support this nomination.

I am the property owner and I grant permission for city staff to evaluate the nominated tree on the property with advance notice.

\_\_\_\_\_  
Signature

\_\_\_\_\_  
Date

Patricia Elizabeth Henle  
\_\_\_\_\_  
Signature

May 18, 2020  
\_\_\_\_\_  
Date

SAN FRANCISCO URBAN FORESTRY COUNCIL

The Urban Forestry Council will use the following criteria to evaluate each potential landmark tree. If you need more space to describe the tree, please attach additional sheets.

TREE DESCRIPTION

Tree name (species and common name): Pinus halepensis Aleppo pine

Number of trees: 1

Street address: 2253 Filbert Street  
San Francisco

Location of Tree:  Front yard  Rear yard  Side yard  Corner-side yard  
 Public right-of-way  Public lands  Not sure  
 Other: \_\_\_\_\_

If the tree which extends beyond multiple properties:

Which part of the tree does so?

Trunk  Canopy

Where in the neighboring area?

Front yard  Rear yard  Side yard  Corner-side yard

GPS units (OPTIONAL): \_\_\_\_\_

Height 55 - 60 feet

Average canopy width 35 feet  
Distance from one edge to opposite edge of tree canopy

Circumference at chest level 92 inches  
Distance around trunk at 4.5 ft off the ground. <http://www.isa-arbor.com/publications/tree-ord/heritage.aspx>

Circumference at ground level 135 inches  
Distance around trunk on the ground where the trunk meets the soil.

**Rarity**

**Rarity:** \_\_\_ Rare \_\_\_ Uncommon  Common \_\_\_ Other  
Unusual species in San Francisco or other geographic regions.

Comment: \_\_\_\_\_  
\_\_\_\_\_

**Physical**

**Size:**  Large \_\_\_ Medium \_\_\_ Small  
Notable size compared to other trees of the same species in San Francisco.

Comment: \_\_\_\_\_  
\_\_\_\_\_

**Age:** Significantly advanced age for the species.

Comment: 90 to 100 years

**Distinguished form:**  Yes \_\_\_ No  
Tree is an example of good form for its species, has a majestic quality or otherwise unique structure.

Describe: \_\_\_\_\_  
\_\_\_\_\_

**Tree condition:**  Good \_\_\_ Poor \_\_\_ Hazard  
Consider overall tree health and structure, and whether or not tree poses a hazard

Describe: \_\_\_\_\_  
\_\_\_\_\_

**Historical**

**Historical Association:** \_\_\_ Yes  None apparent  
Related to a historic or cultural building, site, street, person, event, etc.

Describe nature of appreciation: \_\_\_\_\_  
\_\_\_\_\_

**Profiled in a publication or other media:** \_\_\_ Yes \_\_\_ Unknown  
Tree has received coverage in print, internet, video media, etc. **Attach documentation** if appropriate.

Describe coverage: various photographs in Cow Hollow



**Environmental**

**Prominent landscape feature:**  Yes  No

A striking and outstanding natural feature.

Describe, attach photo if possible: \_\_\_\_\_

5 photographs attached

**Low tree density:**  Low  Moderate  High

Tree exists in a neighborhood with very few trees.

Describe: \_\_\_\_\_

**Interdependent group of trees:**  Yes  No

This tree in an integral member of a group of trees and removing it may have an adverse impact on adjacent trees.

Describe: \_\_\_\_\_

**Visible or Accessible from public right-of-way:**  Yes  No

High visibility and/or accessibility from public property.

Describe: high visibility but no accessibility

**High traffic area:**  Yes  No

Tree is located in an area that has a high volume of vehicle, pedestrian or bike traffic and has a potential traffic calming effect.

Describe: Carb hollow has a high volume of vehicle pedestrian and bike traffic and the tree despite being in the rear of the property and not on the street is so large it provides a traffic calming effect.

**Important wildlife habitat:**  Yes  No

Species has a known relationship with a particular local wildlife species or it provides food, shelter, or nesting to specific known wildlife individuals.

Describe: Yes. Many birds, squirrels live in the tree

**Erosion control:**  Yes  No

Tree prevents soil erosion.

Describe: \_\_\_\_\_

**Wind or sound barrier:**  Yes  No

Tree reduces wind speed or mitigates undesirable noise.

Describe: \_\_\_\_\_

**Cultural**

**Neighborhood appreciation:**  Yes  None apparent

Multiple indicators such as letters of support, petition, outdoor gatherings, celebrations adjacent or related to tree, etc. Attach documentation:

Describe: Declaration of a neighbor Evelyn Crivello, and a gardener Mark Kmetez and a tenant Oliver Roup.

**Cultural appreciation:**  Yes  None apparent

Particular value to certain cultural or ethnic groups in the city.

Describe nature of appreciation: \_\_\_\_\_

**Planting contributes to neighborhood character:**  Yes  No

Tree contributes significantly to, or represents, neighborhood aesthetic.

Describe contribution: It is the only large pine on the block and is depicted through the aerial photos which are part of this application

**Profiled in a publication or other media:**  Yes  Unknown

Tree has received coverage in print, internet, video media, etc. **Attach documentation** if appropriate.

Describe coverage: \_\_\_\_\_

**Prominent landscape feature:**  Yes  No

A striking and outstanding natural feature.

Describe, attach photo if possible: \_\_\_\_\_

All five photographs, which are attached, were taken by Patricia Henle (owner) on February 25, 2020.

Also attached are the following four declarations.

1. The declaration of Mark Kmetez who is the gardener on the property where the Aleppo pine is located and has been the gardener for 15 years.
2. The declaration of Evelyn Crivello who is a neighbor of 2251/2253 Filbert Street and has lived or owned a home three doors down for her entire life (she is 83).
3. The declaration of Oliver Roup a present tenant at the building located at 2251/2253 Filbert Street.
4. The declaration of Patricia Henle the owner of the building at 2251/2253 Filbert Street and the Aleppo Pine at issue.



**If you have any questions about this form, tree terms or tree concepts, please contact the Urban Forestry Council staff (below). It is acceptable if you cannot provide some of the information requested on this form.**

**A photograph of the tree must be submitted with this form.**

Please attach **optional** supporting documents such as letters, arborist report, etc.

**Send to:** Urban Forestry Council, 1455 Market Street, Suite 1200, San Francisco, CA 94103  
OR sfurbanforestcouncil@sfgov.org

**Any information you submit will be part of the public record.**

The Public Records Act defines a "public record" broadly to include "any writing containing information relating to the conduct of the public's business prepared, owned, used or retained by any state or local agency, regardless of the physical form or characteristics." Govt. Code § 6252(e). The Sunshine Ordinance defines "public information" as the content of "public records" as defined in the Public Records Act. Admin Code § 67.20(b). Pursuant to the Public Records Act and Sunshine Ordinance, this document is a public record and will be available to the public upon request, at the hearing site, at the San Francisco Main Library, and on the Urban Forestry Council's website. Admin Code §§ 8.16, 67.7 (b), and 67.21(a).

Application received date _____	Received by _____
Tree evaluation form _____	UFC recommendation date _____
Board of Supervisors Decision _____	
Landmark Tree # _____	Title recorded date _____





PhotoScan by Google Photos

1





PhotoScan by Google Photos

2





3











1  
2 I, MARK KMETEZ, do hereby declare that:

3  
4 1. I am a gardener and landscape contractor. My business is in San Francisco, California.  
5 I am making this declaration in support of Patricia Henle's effort to have a 100-year-old Aleppo Pine tree  
6 located at 2251 Filbert Street given a Landmark Tree Designation. Two true and correct photographs of  
7 the tree are attached. One shows the tree from a distance of approximately 65 feet away and one of the  
8 canopy.

9 2. Ms. Henle is the owner of the property at 2251 and 2253 Filbert Street in San Francisco.  
10 On the back of the property is an (approximately) 100 year old Aleppo Pine.

11 3. I have been a gardener for over 40 years. I have worked on various pine trees; I have  
12 worked for Patricia Henle and on this property and on this pine tree for 15 years, specifically I have  
13 come to this address and worked in the back yard of this property once a month over those 15 years. I  
14 have periodically thinned out some of the branches on this specific Aleppo Pine tree.

15 4. The Aleppo Pine at issue is entirely on the property of Patricia Henle although the  
16 canopy of the tree does hang over the property directly behind her property. The tree is approximately  
17 50-60 feet in height with a circumference of approximate 11.5 feet. It is at least 90 years of age and  
18 more likely closer to 100-120 years old. In the 15 years I have worked at the property, the tree has had  
19 minimal additional growth and has always appeared the same or similar height. The tree is healthy. It is,  
20 I believe, the largest tree in Cow Hollow and has been the largest tree in Cow Hollow for many years.  
21 Branches that are dead are removed. The tree is also the home for many birds and provides shade for the  
22 property. The stone planters next to the tree on either side have been there for the entire time I have been  
23 going to the property. I understand them to be approximately 30 years old.

24 5. On my observation the canopy of the tree has changed minimally over the last 15 years.  
25 It has been – and of course continues to be extremely large, healthy and beautiful tree.

26 6. I have visited the property and the tree with an arborist from Bartlett Tree Services who  
27 has confirmed the age and the size of the tree and the fact it has not changed in decades.

28 I declare under penalty of perjury under the laws of the State of California that the foregoing is  
true and correct. Signed in San Francisco, California.

25 Date

03/17/2020

  
Mark Kmetez

10 Ford Street

San Francisco, California 94114

1  
2 I, Evelyn Crivello, do hereby declare that:

- 3  
4 1. I am the owner of 2273 / 2275 Filbert Street which is three doors down from 2251-2253  
5 Filbert Street. I have owned 2273 / 2275 Filbert Street since 1975. I am 83 and currently  
6 live in Novato but until very recently used one of the flats for myself and family  
7 members.
- 8 2. I am making this declaration in support of Patricia Henle's effort to have the 60 foot  
9 Aleppo Pine tree located at the back of 2251/2253 Filbert Street honored with a  
10 Landmark Tree Designation. She is a neighbor of mine in San Francisco and her  
11 property is three doors down from mine on the same side of the street. I have reviewed  
12 the photographs that are being submitted with this application and confirm that the large  
13 tree I am referring to is in the one depicted in the 5 photographs. I have attached as  
14 exhibit A to this declaration an aerial photograph of Patricia Henle's home with her  
15 house and my house and the tree labeled. The large tree on Patricia Henle's property is  
16 the only large tree on the entire block. I have known the tree at the back of 2251/2253  
17 Filbert my entire life.
- 18 3. 2273/2275 Filbert Street has been in my family since shortly after the building was  
19 constructed in the early 1900's. The original builder sold it to my aunt, Armida Lacoconi  
20 (sometime before 1915). When my aunt passed, I and my husband bought it from my  
21 cousin. My late husband Frank Crivello and I purchased the building from my cousin in  
22 1975. I am, therefore, very familiar with all the houses on this block of Filbert Street.  
23 You can see the large pine tree on Patricia Henle's property from our property (you can  
24 see it anywhere on the block), and it is the only large tree for many blocks in Cow  
25 Hollow. I have no recollection in my lifetime of this pine tree not being there. In my life  
26 time it was always tall and beautiful. It is also appreciated by myself and all the  
27 neighbors in Cow Hollow for its shade, noise absorption and general beauty. I would  
28 like to see this tree protected through the Landmark tree designation.

24 I declare under penalty of perjury under the laws of the State of California that the foregoing is true and  
25 correct. Signed in Novato, California.

26 Date May 19, 2020

Evelyn Crivello

Evelyn Crivello

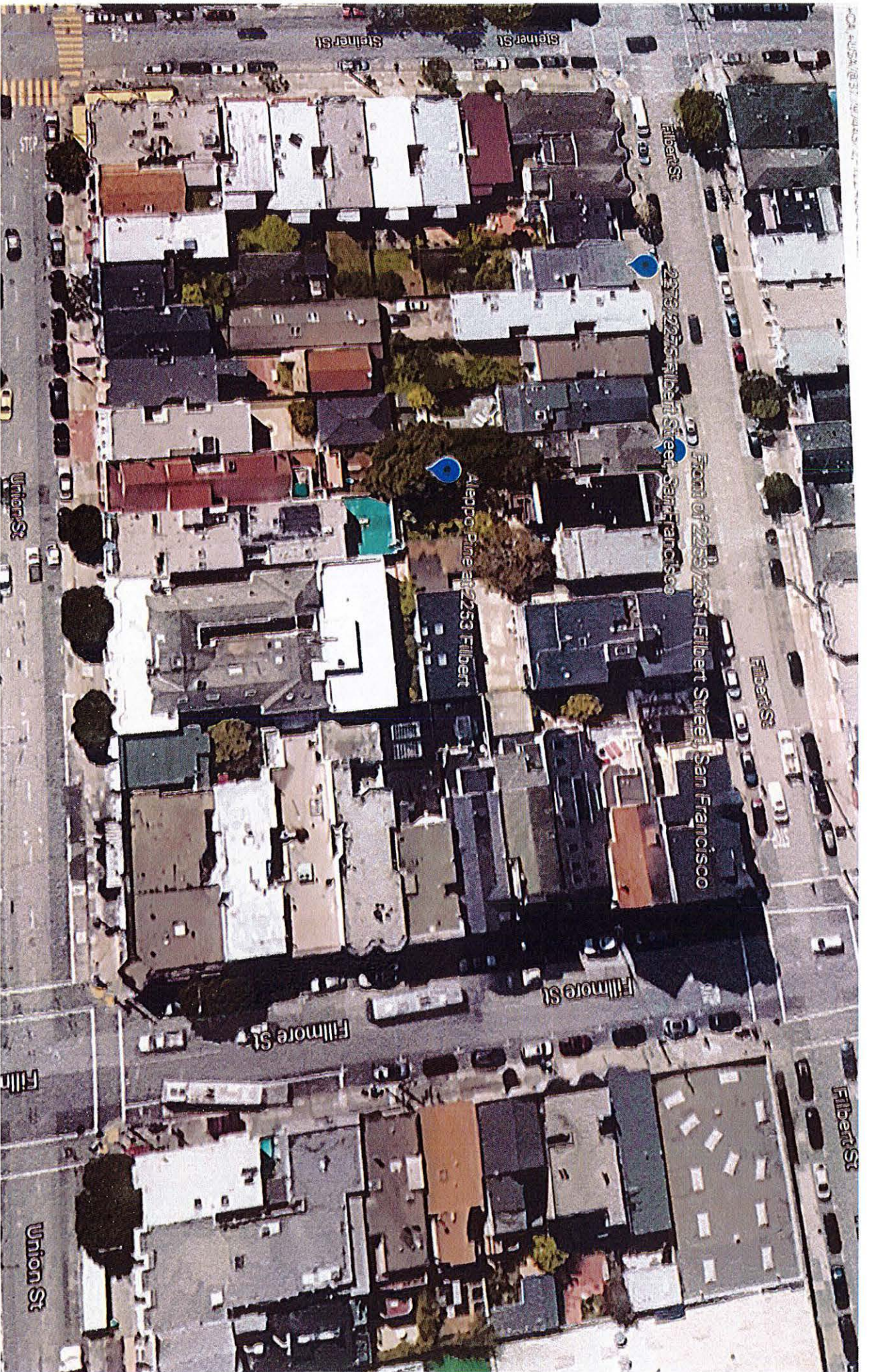
1 Live Oak Court

Novato, California 94949



Exhibit A  
to Evelyn Crivello  
Declaration





PhotoScan by Google Photos



I, Oliver Roup, do hereby declare that:

1. I am a tenant at 2251 Filbert Street. I rent from Patricia Henle. I have been a tenant since March 2019.
2. I am making this declaration in support of Patricia Henle's effort to have the 60 foot Aleppo Pine tree located in the back of 2253/ 2251 Filbert Street honored with a Landmark Tree Designation. I have attached as exhibit A to this declaration an aerial photograph of where I live, and the tree labeled. The large tree on Patricia Henle's property is the only large tree on the entire block.
3. The tree provides privacy, shade, sound proofing and a habitat for wildlife. I chose this residency in part because of the backyard and this tall, old pine. It shades an outdoor deck below and provides privacy on my upper deck as well.

I declare under penalty of perjury under the laws of the State of California that the foregoing is true and correct. Signed in San Francisco, California.

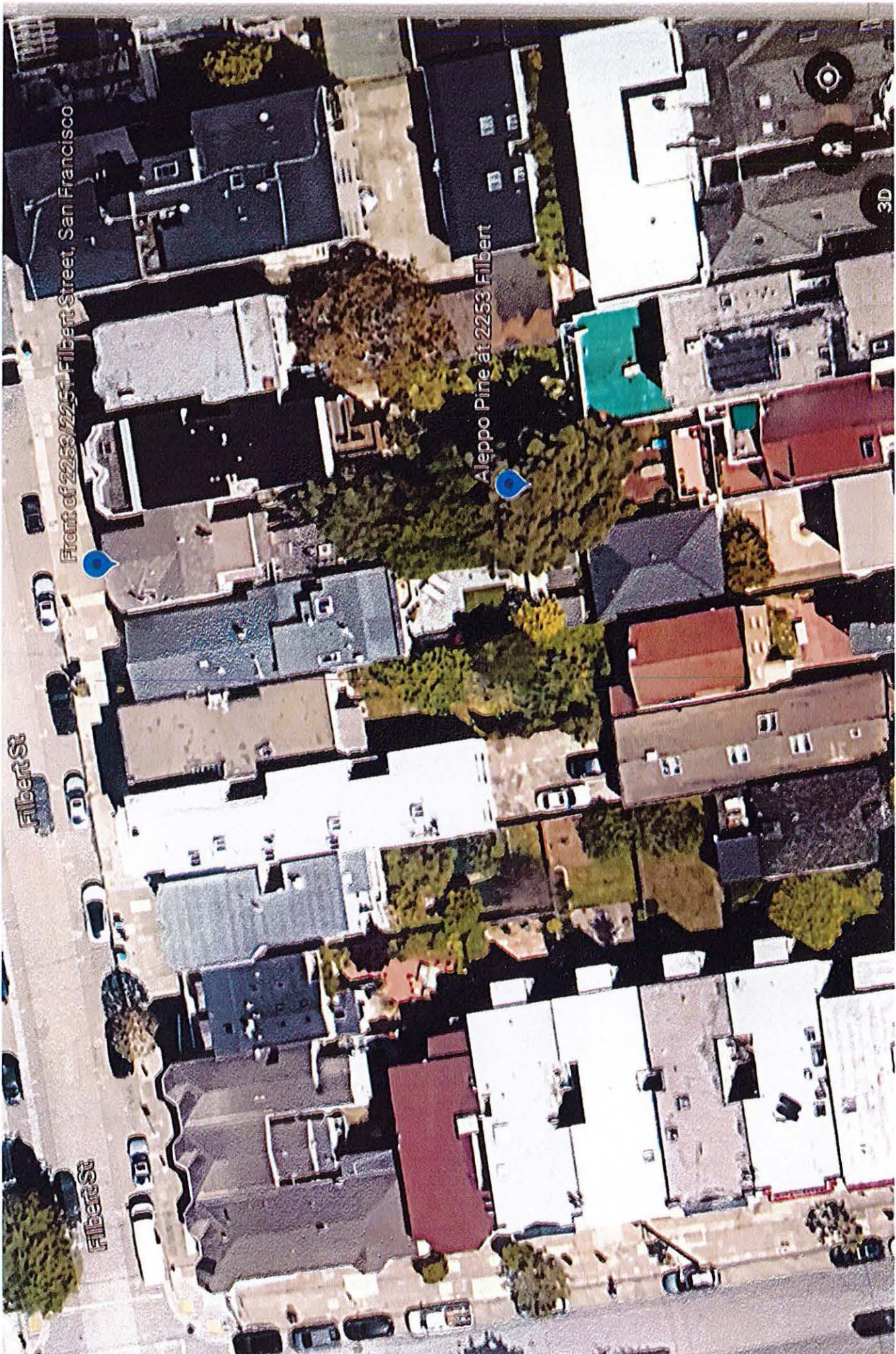
Date 05/18/2020



Oliver Roup  
2251 Filbert Street  
San Francisco CA 94123

Exhibit A  
to Oliver Roup  
Declaration





Front of 2253/2254 Filbert Street, San Francisco

Filbert St

Filbert St

Aleppo Pine at 2253 Filbert

3D



1  
2  
3  
4  
5  
6  
7  
8  
9  
10  
11  
12  
13  
14  
15  
16  
17  
18  
19  
20  
21  
22  
23  
24  
25  
26  
27  
28

I, Patricia Henle, do hereby declare that:

1. I am the owner of 2251/2253 Filbert Street. I have owned the property since 1989.
2. I am seeking a landmark tree designation for a 55-60 foot Aleppo Pine that is in the back of my yard at 2251/2253 Filbert Street.
3. 2251/2253 Filbert Street was built in 1902. One family owned the building from 1902 until I purchased it in 1989. When I purchased the property in 1989 the Aleppo Pine was on the property and was approximately the same height and circumference it is now. I had built the deck on the back of the property which abuts the Aleppo pine as well as the stone planters. When I purchased the building, I was shown a photograph by the previous owners daughter of the back yard with the Aleppo pine in the 1930's when there was snow in the back yard. It appeared to be about 5 feet in that photograph.
4. The Aleppo pine is entirely on my property although the canopy stretches over the property behind me. On my observation the canopy of the tree has changed minimally over the last 15 years. It has been – and of course continues to be extremely large, healthy and beautiful tree. I have a gardener, Mark Kmetz who has worked on the property every month since 2004. In addition to doing regular gardening work he has pruned branches on the Aleppo pine in question. I have also hired professional tree trimmers when it was warranted. I have never been advised that it had a disease.
5. Attached to the application for landmark tree designation and to the declaration of Evelyn Crivello are five photographs of the tree. These were taken by myself on or about February 25, 2020.
6. In 1989 I built a deck that is in front of the tree that I and my tenants use. The tree provides shade, a place for the wildlife and birds to live, and noise absorption from the traffic on Filbert and Filmore streets.
7. Attached to this declaration as exhibit A an aerial photograph of my building and the tree. They are labeled. This was printed on May 18, 2020.
8. Attached to this declaration as exhibit B is a photograph of the front of 2251/2253 Filbert. You can see the Aleppo Pine in the background. I have circled it in red as well as marked the front of the house.

I declare under penalty of perjury under the laws of the State of California that the foregoing is true and correct. Signed in San Francisco, California.

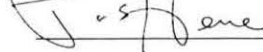
Date May 18, 2020   
Patricia E. Henle  
1398 Post Street  
San Francisco, California 94109

Exhibit A  
to declaration of Patricia  
Henle





Front of 2253/2251 Filbert Street, San Francisco

Aleppo Pine at 2253 Filbert

Steiner St

Filbert St

Pine St

Greenwich St

Pine St

Pine St

Pine St

Filbert St

Filbert St

Greenwich St

3D





Exhibit B  
to declaration of Patricia  
Henle



## Arbor Day Tree Care

245 Calle de la Selva  
Novato, CA 94949  
415-309-1671 Mobile  
[arbordaytreecare@yahoo.com](mailto:arbordaytreecare@yahoo.com)



---

## Arborist Report

Date: July 26, 2020

To: Patricia Henle  
2251 Filbert Street  
San Francisco, CA 94123  
415-407-5850  
phenle@henlelaw.com

Job Location: 2251 Filbert Street, San Francisco, CA 94123

**Activity:** Observe and evaluate large heritage tree in the back of the property at 2251 Filbert street.

**Observations:**

The tree in question is a Ponderosa Pine (*Pinus ponderosa*). It is 80 feet in height, 40 inches in diameter and in very healthy condition with a well-balanced canopy and good trunk taper. This tree has been pruned for safety and well cared for over the years and could never be replaced. The branches have been maintained and thinned over the years to keep it safe in this unique environment.

On an additional note, several of the neighbors in the community have commented on the beauty and charm that it adds to the view. This tree not only adds value to the property on which it resides but to the neighborhood.

**Recommendations:** I recommend that this tree be added to the San Francisco landmark property tree list because the owner of this property and the many neighbors have expressed their feeling of joy and wonder for such a beautiful specimen. I have inspected this tree and found no defects or hazards that may affect its safety or health.

I have included a photo of the Ponderosa Pine below. Please feel free to reach out with any questions or concerns.

Regards,

*Edgar C. Evans*

Edgar C. Evans  
Certified Arborist WC0720A



Photo of Ponderosa Pine at 2251 Filbert Street, San Francisco, CA



# Urban Forestry Council

## Landmark Tree Evaluation Form and Criteria

Pursuant to [Ordinance 0017-06](#) and [Public Works Code Article 16, Section 810](#), the Urban Forestry Council developed these criteria for evaluating potential landmark trees in San Francisco. When evaluating or considering potential landmark trees, please consider the context of the tree within its site location. For example, a tree on PUC land may not have the same community importance that a street or park tree would. Use the comment sections, as appropriate, to explain or support evaluation.

Evaluator's name	Morgan Vaisset-Fauvel
Date of evaluation	Sat August 29 <sup>th</sup> 2020
Start time of evaluation	3.45pm
End time of evaluation	4.35pm
Botanical name	Ponderosa Pinus
Common name	Ponderosa Pine
Street address	<u>2251/2253 Filbert Street</u>
Cross streets	Filbert and Fillmore

### Rarity

Unusual species in San Francisco or other geographic regions.

- Rare  
 Uncommon  
 Common  
 Other

Comments	Ponderosa pines are rarely planted in San Francisco, but not uncommon in California landscape. Rarely seen as landscape, or street tree.
----------	--

### Physical Attributes

**Size:** Notable size compared to other trees of the same species in San Francisco.

- Large  
 Medium  
 Small

Comments	Will classify this specimen as dominant height.
----------	---

**Age:** Significantly advanced age for the species.

- Yes
- No

Comments	It is a mature tree very vigorous. Still plenty to live. Estimate at least 100 year old.
----------	--

**Distinguished form:** Tree is an example of good form for its species, has majestic quality or otherwise unique structure.

- Yes
- No

Comments	Something happen to the scaffolding of the tree many year ago. 60, 70 years ago. Typically one stem structure, this one has multiple scaffolding due to very old pruning, or storm damage.
----------	--

**Tree condition:** Consider overall tree health and structure, including hazard potential.

- Good
- Poor
- Potential hazard

Comments	Even the tree has multiple stems, the structure is still very strong. The tree seems to have been prune on a regular basics, and doesn't over extend that much out. (low risk of branches failure.) it would be recommended to cable the 3 stems together to help the tree respond during unseasonal storm. Would recommend a good cleaning, but the tree is in very good health condition. It looks very vigorous for his age. No obvious presence of pest, nor beetle. This specie is commonly attacked to shoot hole bore, and the pest is not present. One large extra-large squirrel nest could cause one branch to fail.
----------	--

## OVERALL CATEGORY RATING

Do the **physical attributes** of this tree support a recommendation for Landmark status?

- Yes
- Partially
- No

---

## Historical Attributes

**Historical association:** Any relation to a historic or cultural building, site, street, person, event, etc.

- Yes
- None apparent

Comments	The tree has a long neighborhood historical value, as in the past all the backyard were not fenced off individually. This tree have been in the memory of all habitant for over 100 years at least.
----------	---

**Profiled in a publication or other media for its *historic value*:** Tree has received coverage in print, internet, media, etc. Attach documentation or provide links if appropriate.

- Yes
- Unknown

Comments	
----------	--

### OVERALL CATEGORY RATING

Do the **historic attributes** of this tree support a recommendation for Landmark status?

- Yes
- Partially
- No

### Environmental Attributes

**Prominent landscape feature:** A striking and outstanding natural feature.

- Yes
- No

Comments	Yes, this tree qualified of prominent feature. You really can't miss it. it dominate the all backyard landscape of the neighborhood.
----------	--

**Low tree density:** Tree exists in a neighborhood with very few trees.

- Low
- Moderate
- High

Comments	Very low density in the street, and back yard. I can see only 3 large tree in all the back yards (including neighbors). 2 of these tree are in that same property.
----------	--

**Interdependent group of trees:** This tree is an integral member of a group of trees and removing it may have an adverse impact on the adjacent trees.

- Yes

No

Comments	It is growing in a small group (one smaller live oak tree), but definitely dominant. I would not call dependent.
----------	--

**Visible or accessible from public right-of-way:** High visibility and/or accessibility.

Yes

No

Comments	Yes, but you need to look for it.
----------	-----------------------------------

**High traffic area:** Tree is in an area that has a large volume of vehicle, pedestrian, or bike traffic and has a potential traffic-calming effect.

Yes

No

Comments	Back yard tree
----------	----------------

**Important wildlife habitat:** Species has a known relationship with wildlife to which it provides food, shelter, nesting potential, etc.

Yes

No

Comments	This native pine tree provide a lot food, and shelter to native insects, and birds. One large squirrel nest is very noticeable. The tree provide the perfect perch for raptor that help the rodent control in the neighborhood. ( did not seen raptor sighting) the combines with the 70 year old Coast Live oak make it a mini native conservation backyard area.
----------	--

**Erosion control:** Tree prevents soil erosion.

Yes

No

Comments	Located on a light slope. Hold soil, so it doesn't go to the homeowner house.
----------	---

**Wind or sound barrier:** Tree reduces wind speed or mitigates undesirable noise.

Yes

No

Comments	The deep green canopy is a very good wind break.
----------	--

## OVERALL CATEGORY RATING



Do the **environmental attributes** of this tree support a recommendation for Landmark status?

- Yes
  - Partially
  - No
- 

## Cultural Attributes

**Neighborhood appreciation:** Multiple indicators such as letters of support, petition(s), outdoor gatherings, celebrations adjacent or related to the tree, etc. Attach documentation.

- Yes
- None apparent

Comments	Historically used to be the neighbors hangout, before fences were put to dived all the back yard.
----------	---

**Cultural appreciation:** Tree is of value to a certain cultural or ethnic group(s) in the City.

- Yes
- None apparent

Comments	
----------	--

**Profiled in a publication or other media for its *cultural* value:** Tree has received coverage in print, internet, media, etc. Attach documentation or provide links if appropriate.

- Yes
- Unknown

Comments	
----------	--

## OVERALL CATEGORY RATING

Do the **cultural attributes** of this tree support a recommendation for Landmark status?

- Yes
  - Partially
  - No
- 

## Additional comments:



Heard that one possible neighbor conflict related to his size, and some construction (or addition). This is very worrying, as drastic pruning could compromise the health of the tree, even more could attract a beetle infestation that could cause death of the tree very rapidly.

# Urban Forestry Council Landmark Tree Evaluation Form and Criteria

Pursuant to Ordinance 0017-06 and Public Works Code Article 16, Section 810, the Urban Forestry Council developed these criteria for evaluating potential landmark trees in San Francisco. When evaluating or considering potential landmark trees, please consider the context of the tree within its site location. For example, a tree on PUC land may not have the same community importance that a street or park tree would. Use the comment sections, as appropriate, to explain or support evaluation.

Evaluator's name	Jillian Keller
Date of evaluation	7-19-20
Start time of evaluation	3:30 PM
End time of evaluation	4:00 PM
Botanical name	<del>ponderosa</del> Pinus ponderosa
Common name	<del>Allepno pine</del>
Street address	2251 / 2253 Filbert St.
Cross streets	Filmore St. + Steiner St.

## Rarity

Unusual species in San Francisco or other geographic regions.

- Rare  
 Uncommon  
 Common  
 Other

Comments	
----------	--

## Physical Attributes

~~Size~~: Notable size compared to other trees of the same species in San Francisco.

- Large  
 Medium  
 Small

Comments	
----------	--

~~Age~~: Significantly advanced age for the species.

- Yes  
 No

Comments	mature
----------	--------

**Distinguished form:** Tree is an example of good form for its species, has majestic quality or otherwise unique structure.

- Yes
- No

Comments	Large, spreading crown overhangs multiple properties Tall, imposing form visible from street ~60'
----------	---

**Tree condition:** Consider overall tree health and structure, including hazard potential.

- Good
- Poor
- Potential hazard

Comments	Full, vigorous crown and growth. Minimal visible dieback.
----------	---

### OVERALL CATEGORY RATING

Do the **physical attributes** of this tree support a recommendation for Landmark status?

- Yes
- Partially
- No

### Historical Attributes

**Historical association:** Any relation to a historic or cultural building, site, street, person, event, etc.

- Yes
- None apparent

1902 ~ Neighborhood would play around tree  
picnic + park  
House built early 1900's

Comments	
----------	--

**Profiled in a publication or other media for its historic value:** Tree has received coverage in print, internet, media, etc. Attach documentation or provide links if appropriate.

- Yes
- Unknown

Supposedly? Property owner talked about it being featured in a news article about snow in the city.

Comments	
----------	--

### OVERALL CATEGORY RATING

Do the **historic attributes** of this tree support a recommendation for Landmark status?

- Yes
- Partially

No

---

## Environmental Attributes

**Prominent landscape feature:** A striking and outstanding natural feature.

Yes

No

Comments	
----------	--

**Low tree density:** Tree exists in a neighborhood with very few trees.

Low

Moderate

High

Comments	
----------	--

**Interdependent group of trees:** This tree is an integral member of a group of trees and removing it may have an adverse impact on the adjacent trees.

Yes

No

Comments	
----------	--

**Visible or accessible from public right-of-way:** High visibility and/or accessibility.

Yes

No

Comments	<i>Somewhat visible from street</i>
----------	-------------------------------------

**High traffic area:** Tree is in an area that has a large volume of vehicle, pedestrian, or bike traffic and has a potential traffic-calming effect.

Yes

No

Comments	
----------	--

**Important wildlife habitat:** Species has a known relationship with wildlife to which it provides food, shelter, nesting potential, etc.

Yes

No

Comments	<i>Squirrel nest cover, roosting spot nesting birds</i>
----------	---

Yes

No

Comments	
----------	--

**Wind or sound barrier:** Tree reduces wind speed or mitigates undesirable noise.

Yes

No

Comments	
----------	--

### OVERALL CATEGORY RATING

Do the **environmental attributes** of this tree support a recommendation for Landmark status?

Yes

Partially

No

---

### Cultural Attributes

**Neighborhood appreciation:** Multiple indicators such as letters of support, petition(s), outdoor gatherings, celebrations adjacent or related to the tree, etc. Attach documentation.

Yes

None apparent

Comments	
----------	--

**Cultural appreciation:** Tree is of value to a certain cultural or ethnic group(s) in the City.

Yes

None apparent

Comments	
----------	--

**Profiled in a publication or other media for its cultural value:** Tree has received coverage in print, internet, media, etc. Attach documentation or provide links if appropriate.

Yes *maybe!*

*Article property owner mentioned, but didn't provide*

Unknown

Comments	
----------	--



**OVERALL CATEGORY RATING**

Do the **cultural attributes** of this tree support a recommendation for Landmark status?

- Yes
- Partially
- No

**Additional comments:**



Neck ~ 15" - 6" above soil + roots  
Patio built around tree

~11.5' cir.

At least 80 yrs old

Nest at edge of crown

Ponderosa pine

Pruned for clearance  
for branch removal  
1930s

• Snow storm ~~1986~~ 1930s Photos profile  
Article in '30s  
Magazine

• Community gathering place  
~40's

1902-4 Building age

No past failures

3 Canary Is. palms behind pine

Neighbor's view + condo

Codomo attachments ~ 17'

Good condition

In between deck, fence,

concrete structures, and palms

Base is a few " from deck + concrete  
to a foot str.

Sap from past pruning wounds

full, vig. crown

spreading

Prominent feature of landscape

typical needle browning

# Urban Forestry Council

## Landmark Tree Evaluation Form and Criteria

Pursuant to [Ordinance 0017-06](#) and [Public Works Code Article 16, Section 810](#), the Urban Forestry Council developed these criteria for evaluating potential landmark trees in San Francisco. When evaluating or considering potential landmark trees, please consider the context of the tree within its site location. For example, a tree on PUC land may not have the same community importance that a street or park tree would. Use the comment sections, as appropriate, to explain or support evaluation.

Evaluator's name	Pam Nagle
Date of evaluation	July 21, 2020
Start time of evaluation	12 Noon
End time of evaluation	12:45 PM
Botanical name	<i>Pinus ponderosa</i> *
Common name	Ponderosa Pine*
Street address	2251/2253 Filbert Street, SF
Cross streets	Steiner/Fillmore

\*Tree was nominated as Aleppo Pine (*Pinus halepensis*) but ID is in question.

### Rarity

Unusual species in San Francisco or other geographic regions.

- Rare  
 Uncommon  
 Common  
 Other

Comments	SF within its native range, but don't know of many in town.
----------	---

### Physical Attributes

**Size:** Notable size compared to other trees of the same species in San Francisco.

- Large  
 Medium  
 Small

Comments	
----------	--

**Age:** Significantly advanced age for the species.

- Yes  
 No

Comments	
----------	--

**Distinguished form:** Tree is an example of good form for its species, has majestic quality or otherwise unique structure.

- Yes  
 No

Comments	Tall tree at back of lot, upright form; lowest branches pruned up to approx. 25'; visible feature from many surrounding properties in neighborhood.
----------	---

**Tree condition:** Consider overall tree health and structure, including hazard potential.

- Good  
 Poor  
 Potential hazard

Comments	
----------	--

### OVERALL CATEGORY RATING

Do the **physical attributes** of this tree support a recommendation for Landmark status?

- Yes  
 Partially  
 No

---

### Historical Attributes

**Historical association:** Any relation to a historic or cultural building, site, street, person, event, etc.

- Yes  
 None apparent

Comments	
----------	--

**Profiled in a publication or other media for its *historic value*:** Tree has received coverage in print, internet, media, etc. Attach documentation or provide links if appropriate.

- Yes  
 Unknown

Comments	
----------	--

### OVERALL CATEGORY RATING

Do the **historic attributes** of this tree support a recommendation for Landmark status?

- Yes
- Partially (Not sure.)
- No

## Environmental Attributes

**Prominent landscape feature:** A striking and outstanding natural feature.

- Yes
- No

Comments	Somewhat unique for its city location in the Marina district/Cow Hollow. Also provides some visual screening between certain properties.
----------	--

**Low tree density:** Tree exists in a neighborhood with very few trees.

- Low
- Moderate
- High

Comments	
----------	--

**Interdependent group of trees:** This tree is an integral member of a group of trees and removing it may have an adverse impact on the adjacent trees.

- Yes
- No

Comments	
----------	--

**Visible or accessible from public right-of-way:** High visibility and/or accessibility.

- Yes
- No

Comments	Not so much from street/public sidewalk.
----------	--

**High traffic area:** Tree is in an area that has a large volume of vehicle, pedestrian, or bike traffic and has a potential traffic-calming effect.

- Yes
- No

Comments	
----------	--

**Important wildlife habitat:** Species has a known relationship with wildlife to which it provides food, shelter, nesting potential, etc.

- Yes



No

Comments	
----------	--

**Erosion control:** Tree prevents soil erosion.

Yes

No

Comments	
----------	--

**Wind or sound barrier:** Tree reduces wind speed or mitigates undesirable noise.

Yes

No

Comments	Possibly, for properties in the neighborhood.
----------	---

### OVERALL CATEGORY RATING

Do the **environmental attributes** of this tree support a recommendation for Landmark status?

Yes

Partially

No

---

### Cultural Attributes

**Neighborhood appreciation:** Multiple indicators such as letters of support, petition(s), outdoor gatherings, celebrations adjacent or related to the tree, etc. Attach documentation.

Yes

None apparent

Comments	Owner may have submitted this documentation; I have not reviewed.
----------	---

**Cultural appreciation:** Tree is of value to a certain cultural or ethnic group(s) in the City.

Yes

None apparent

Comments	
----------	--

**Profiled in a publication or other media for its *cultural* value:** Tree has received coverage in print, internet, media, etc. Attach documentation or provide links if appropriate.

Yes

Unknown

Comments	
----------	--

**OVERALL CATEGORY RATING**

Do the **cultural attributes** of this tree support a recommendation for Landmark status?

- Yes
  - Partially
  - No
- 

**Additional comments:**



The tree is unusually large and somewhat unusual species for its location. It is a neighborhood feature for all who can see it (back yards of this surrounding block on Filbert/Union/Fillmore/Steiner Street properties?), and looks to be in good condition. It is not an amenity visible to the general public from the R-O-W.

# Urban Forestry Council

## Landmark Tree Evaluation Form and Criteria

Pursuant to [Ordinance 0017-06](#) and [Public Works Code Article 16, Section 810](#), the Urban Forestry Council developed these criteria for evaluating potential landmark trees in San Francisco. When evaluating or considering potential landmark trees, please consider the context of the tree within its site location. For example, a tree on PUC land may not have the same community importance that a street or park tree would. Use the comment sections, as appropriate, to explain or support evaluation.

Evaluator's name	Damon Spigelman
Date of evaluation	07/29/2020
Start time of evaluation	11:00 a.m.
End time of evaluation	12:30 p.m.
Botanical name	Pinus ponderosa
Common name	Ponderosa Pine
Street address	2253 Filbert Street SF
Cross streets	Filbert/Steiner

### Rarity

Unusual species in San Francisco or other geographic regions.

- Rare
- Uncommon
- Common
- Other

Comments	Not a common tree in SF
----------	-------------------------

### Physical Attributes

**Size:** Notable size compared to other trees of the same species in San Francisco.

- Large
- Medium
- Small

Comments	
----------	--

**Age:** Significantly advanced age for the species.

- Yes
- No

Comments	
----------	--

**Distinguished form:** Tree is an example of good form for its species, has majestic quality or otherwise unique structure.

- Yes
- No

Comments	
----------	--

**Tree condition:** Consider overall tree health and structure, including hazard potential.

- Good
- Poor
- Potential hazard

Comments	Tree does need crown thinning of crossing limbs and dead wood
----------	---

### OVERALL CATEGORY RATING

Do the **physical attributes** of this tree support a recommendation for Landmark status?

- Yes
- Partially
- No

---

## Historical Attributes

**Historical association:** Any relation to a historic or cultural building, site, street, person, event, etc.

- Yes
- None apparent

Comments	
----------	--

**Profiled in a publication or other media for its *historic value*:** Tree has received coverage in print, internet, media, etc. Attach documentation or provide links if appropriate.

- Yes



Unknown

Comments	
----------	--

### OVERALL CATEGORY RATING

Do the **historic attributes** of this tree support a recommendation for Landmark status?

Yes

Partially

No

---

### Environmental Attributes

**Prominent landscape feature:** A striking and outstanding natural feature.

Yes

No

Comments	
----------	--

**Low tree density:** Tree exists in a neighborhood with very few trees.

Low

Moderate

High

Comments	Low street tree density on this block, tree recommended for Landmark status is in rear of yard and not visible from the street
----------	--

**Interdependent group of trees:** This tree is an integral member of a group of trees and removing it may have an adverse impact on the adjacent trees.

Yes

No

Comments	
----------	--

**Visible or accessible from public right-of-way:** High visibility and/or accessibility.

Yes

No

Comments	
----------	--

**High traffic area:** Tree is in an area that has a large volume of vehicle, pedestrian, or bike traffic and has a potential traffic-calming effect.

- Yes
- No

Comments	In rear yard
----------	--------------

**Important wildlife habitat:** Species has a known relationship with wildlife to which it provides food, shelter, nesting potential, etc.

- Yes
- No

Comments	
----------	--

**Erosion control:** Tree prevents soil erosion.

- Yes
- No

Comments	
----------	--

**Wind or sound barrier:** Tree reduces wind speed or mitigates undesirable noise.

- Yes
- No

Comments	
----------	--

### OVERALL CATEGORY RATING

Do the **environmental attributes** of this tree support a recommendation for Landmark status?

- Yes
- Partially
- No

---

### Cultural Attributes

**Neighborhood appreciation:** Multiple indicators such as letters of support, petition(s), outdoor gatherings, celebrations adjacent or related to the tree, etc. Attach documentation.

- Yes
- None apparent

Comments	
----------	--

**Cultural appreciation:** Tree is of value to a certain cultural or ethnic group(s) in the City.

- Yes
- None apparent

Comments	
----------	--

**Profiled in a publication or other media for its *cultural* value:** Tree has received coverage in print, internet, media, etc. Attach documentation or provide links if appropriate.

- Yes
- Unknown

Comments	
----------	--

### OVERALL CATEGORY RATING

Do the **cultural attributes** of this tree support a recommendation for Landmark status?

- Yes
- Partially
- No

---

### Additional comments:





# Urban Forestry Council

## Landmark Tree Evaluation Form and Criteria

Pursuant to [Ordinance 0017-06](#) and [Public Works Code Article 16, Section 810](#), the Urban Forestry Council developed these criteria for evaluating potential landmark trees in San Francisco. When evaluating or considering potential landmark trees, please consider the context of the tree within its site location. For example, a tree on PUC land may not have the same community importance that a street or park tree would. Use the comment sections, as appropriate, to explain or support evaluation.

Evaluator's name	Mike Sullivan
Date of evaluation	7/17/20, 3
Start time of evaluation	5:00 PM
End time of evaluation	5:40 PM
Botanical name	Pinus canariensis
Common name	<del> Aleppo pine</del> → I believe Canary Island Pine
Street address	2251 Fulbert
Cross streets	

### Rarity

Unusual species in San Francisco or other geographic regions.

- Rare  
 Uncommon  
 Common  
 Other

Comments	
----------	--

### Physical Attributes

**Size:** Notable size compared to other trees of the same species in San Francisco.

- Large  
 Medium  
 Small

Comments	Very large
----------	------------

**Age:** Significantly advanced age for the species.

- Yes  
 No

Comments	Not sure of species, but believe Canary Island Pine
----------	---

**Distinguished form:** Tree is an example of good form for its species, has majestic quality or otherwise unique structure.

- Yes
- No

Comments	Majestic is a good adjective
----------	------------------------------

**Tree condition:** Consider overall tree health and structure, including hazard potential.

- Good
- Poor
- Potential hazard

Comments	Very good condition
----------	---------------------

### OVERALL CATEGORY RATING

Do the **physical attributes** of this tree support a recommendation for Landmark status?

- Yes
- Partially
- No

Yes

---

### Historical Attributes

**Historical association:** Any relation to a historic or cultural building, site, street, person, event, etc.

- Yes
- None apparent

Comments	
----------	--

**Profiled in a publication or other media for its historic value:** Tree has received coverage in print, internet, media, etc. Attach documentation or provide links if appropriate.

- Yes
- Unknown

Comments	
----------	--

### OVERALL CATEGORY RATING

Do the **historic attributes** of this tree support a recommendation for Landmark status?

- Yes

- Partially
  - No
- 

## Environmental Attributes

**Prominent landscape feature:** A striking and outstanding natural feature.

- Yes
- No

Comments	
----------	--

**Low tree density:** Tree exists in a neighborhood with very few trees.

- Low
- Moderate
- High

Comments	
----------	--

**Interdependent group of trees:** This tree is an integral member of a group of trees and removing it may have an adverse impact on the adjacent trees.

- Yes
- No

Comments	
----------	--

**Visible or accessible from public right-of-way:** High visibility and/or accessibility.

- Yes
- No

Comments	
----------	--

**High traffic area:** Tree is in an area that has a large volume of vehicle, pedestrian, or bike traffic and has a potential traffic-calming effect.

- Yes
- No

Comments	
----------	--

**Important wildlife habitat:** Species has a known relationship with wildlife to which it provides food, shelter, nesting potential, etc.

- Yes



No

Comments	
----------	--

**Erosion control:** Tree prevents soil erosion.

Yes

No

Comments	
----------	--

**Wind or sound barrier:** Tree reduces wind speed or mitigates undesirable noise.

Yes

No

Comments	
----------	--

### OVERALL CATEGORY RATING

Do the **environmental attributes** of this tree support a recommendation for Landmark status?

Yes

Partially

No

---

### Cultural Attributes

**Neighborhood appreciation:** Multiple indicators such as letters of support, petition(s), outdoor gatherings, celebrations adjacent or related to the tree, etc. Attach documentation.

Yes

None apparent

Comments	
----------	--

**Cultural appreciation:** Tree is of value to a certain cultural or ethnic group(s) in the City.

Yes

None apparent

Comments	
----------	--

**Profiled in a publication or other media for its *cultural* value:** Tree has received coverage in print, internet, media, etc. Attach documentation or provide links if appropriate.

Yes

Unknown

Comments	
----------	--

**OVERALL CATEGORY RATING**

Do the **cultural attributes** of this tree support a recommendation for Landmark status?

- Yes
  - Partially
  - No
- 

**Additional comments:**



BOARD of SUPERVISORS



City Hall  
1 Dr. Carlton B. Goodlett Place, Room 244  
San Francisco 94102-4689  
Tel. No. (415) 554-5184  
Fax No. (415) 554-5163  
TDD/TTY No. (415) 554-5227

**NOTICE OF PUBLIC HEARING**  
**LAND USE AND TRANSPORTATION COMMITTEE**  
**BOARD OF SUPERVISORS OF THE CITY AND COUNTY OF SAN FRANCISCO**

NOTICE IS HEREBY GIVEN THAT the Land Use and Transportation Committee of the City and County of San Francisco will hold a remote public hearing to consider the following hearing matter and said public hearing will be held as follows, at which time all interested parties may attend and be heard:

**Date:** July 26, 2021

**Time:** 1:30 p.m.

**Location:** REMOTE MEETING VIA VIDEOCONFERENCE

**Watch:** [www.sfgovtv.org](http://www.sfgovtv.org)

**Watch:** SF Cable Channel 26, 78, or 99 (*depending on your provider*) once the meeting starts, the telephone number and access code will be displayed on the screen.

**Public Comment Call-In:** <https://sfbos.org/remote-meeting-call>

**Subject:** **File No. 210495.** Ordinance designating the Canary Island Pine (*Pinus canariensis*) tree located at 2251 Filbert Street as a landmark tree pursuant to the Public Works Code; making findings supporting the designation; and directing official acts in furtherance of the landmark tree designation, as defined herein.

On March 17, 2020, the Board of Supervisors (Board) authorized their Board and Committee meetings to convene remotely and allow remote public comment via teleconference. Effective June 29, 2021, the Board and staff began to reconvene for in-person Board proceedings. Committee meetings will continue to convene remotely until further notice. Visit the SFGovTV website at ([www.sfgovtv.org](http://www.sfgovtv.org)) to stream the live meetings, or to watch meetings on demand.

**PUBLIC COMMENT CALL-IN**

**WATCH:** SF Cable Channel 26, 78 or 99 (*depending on your provider*) once the meeting starts, the telephone number and Meeting ID will be displayed on the screen; or

**VISIT:** <https://sfbos.org/remote-meeting-call>

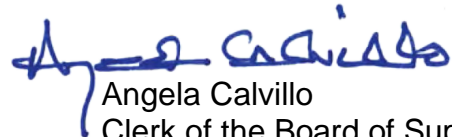


In accordance with Administrative Code, Section 67.7-1, persons who are unable to attend the hearing on this matter may submit written comments prior to the time the hearing begins. These comments will be made as part of the official public record in this matter and shall be brought to the attention of the Board of Supervisors. Written comments should be addressed to Angela Calvillo, Clerk of the Board, City Hall, 1 Dr. Carlton B. Goodlett Place, Room 244, San Francisco, CA, 94102 or sent via email ([board.of.supervisors@sfgov.org](mailto:board.of.supervisors@sfgov.org)). Information relating to this matter is available in the Office of the Clerk of the Board or the Board of Supervisors' Legislative Research Center (<https://sfbos.org/legislative-research-center-lrc>). Agenda information relating to this matter will be available for public review on Friday, July 23, 2021.

For any questions about this hearing, please contact the Assistant Clerk for the Land Use and Transportation Committee:

Erica Major ([Erica.Major@sfgov.org](mailto:Erica.Major@sfgov.org)) ~ (415) 554-4441)

**Please Note:** *The Department is open for business, but employees are working from home. Please allow 48 hours for us to return your call or email.*



Angela Calvillo  
Clerk of the Board of Supervisors  
City and County of San Francisco

em:jec:ams



**MYRNA MELGAR**

---

DATE: July 21, 2021

TO: Angela Calvillo  
Clerk of the Board of Supervisors

FROM: Supervisor Myrna Melgar, Chair, Land Use and Transportation Committee *MM*

RE: Land Use and Transportation Committee  
COMMITTEE REPORTS

---

Pursuant to Board Rule 4.20, as Chair of the Land Use and Transportation Committee, I have deemed the following matters are of an urgent nature and request them be considered by the full Board on Tuesday, July 27, 2021, as Committee Reports:

- |                        |   |
|------------------------|---|
| <b>File No. 210426</b> | <b>Initiating Landmark Designation - Lincoln Park "City Cemetery"</b><br>Sponsor: Chan          |
| <b>File No. 210726</b> | <b>Initiating Landmark Designation - Clay Theatre</b><br>Sponsor: Stefani                       |
| <b>File No. 210495</b> | <b>Landmark Tree Designation - Canary Island Pine - 2251 Filbert Street</b><br>Sponsor: Stefani |

These matters will be heard in the Land Use and Transportation Committee at a Regular Meeting on Monday, July 26, 2021, at 1:30pm.

# Introduction Form

By a Member of the Board of Supervisors or Mayor

Time stamp  
or meeting date

I hereby submit the following item for introduction (select only one):

- 1. For reference to Committee. (An Ordinance, Resolution, Motion or Charter Amendment).
- 2. Request for next printed agenda Without Reference to Committee.
- 3. Request for hearing on a subject matter at Committee.
- 4. Request for letter beginning : "Supervisor  inquiries"
- 5. City Attorney Request.
- 6. Call File No.  from Committee.
- 7. Budget Analyst request (attached written motion).
- 8. Substitute Legislation File No.
- 9. Reactivate File No.
- 10. Topic submitted for Mayoral Appearance before the BOS on

Please check the appropriate boxes. The proposed legislation should be forwarded to the following:

- Small Business Commission
- Youth Commission
- Ethics Commission
- Planning Commission
- Building Inspection Commission

**Note: For the Imperative Agenda (a resolution not on the printed agenda), use the Imperative Form.**

Sponsor(s):

Stefani

Subject:

Landmark Tree Designation - Canary Island Pine Located at 2251 Filbert Street

The text is listed:

Ordinance designating the Canary Island Pine (Pinus canariensis) tree at 2251 Filbert Street (Assessor's Block 0534, Lot 032) as a landmark tree pursuant to Public Works Code Section 810, making findings supporting the designation, and requesting official acts in furtherance of the landmark tree designation.

Signature of Sponsoring Supervisor: /s/ Catherine Stefani

For Clerk's Use Only