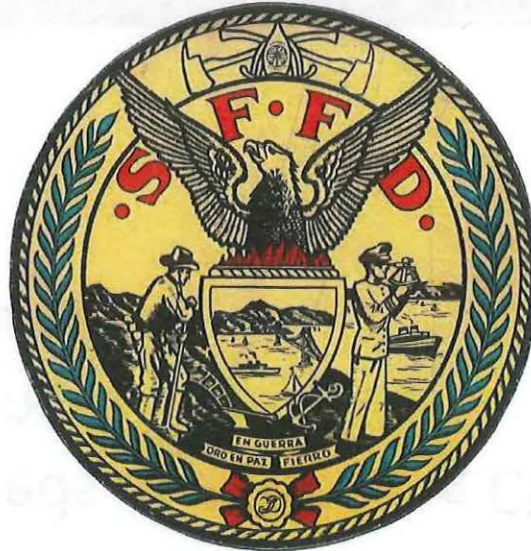


File # 15032P  
Received in Committee  
4/22/15  
J.W.




**Budget and Finance Committee  
Public Safety Services Hearing**

**San Francisco Fire Department**

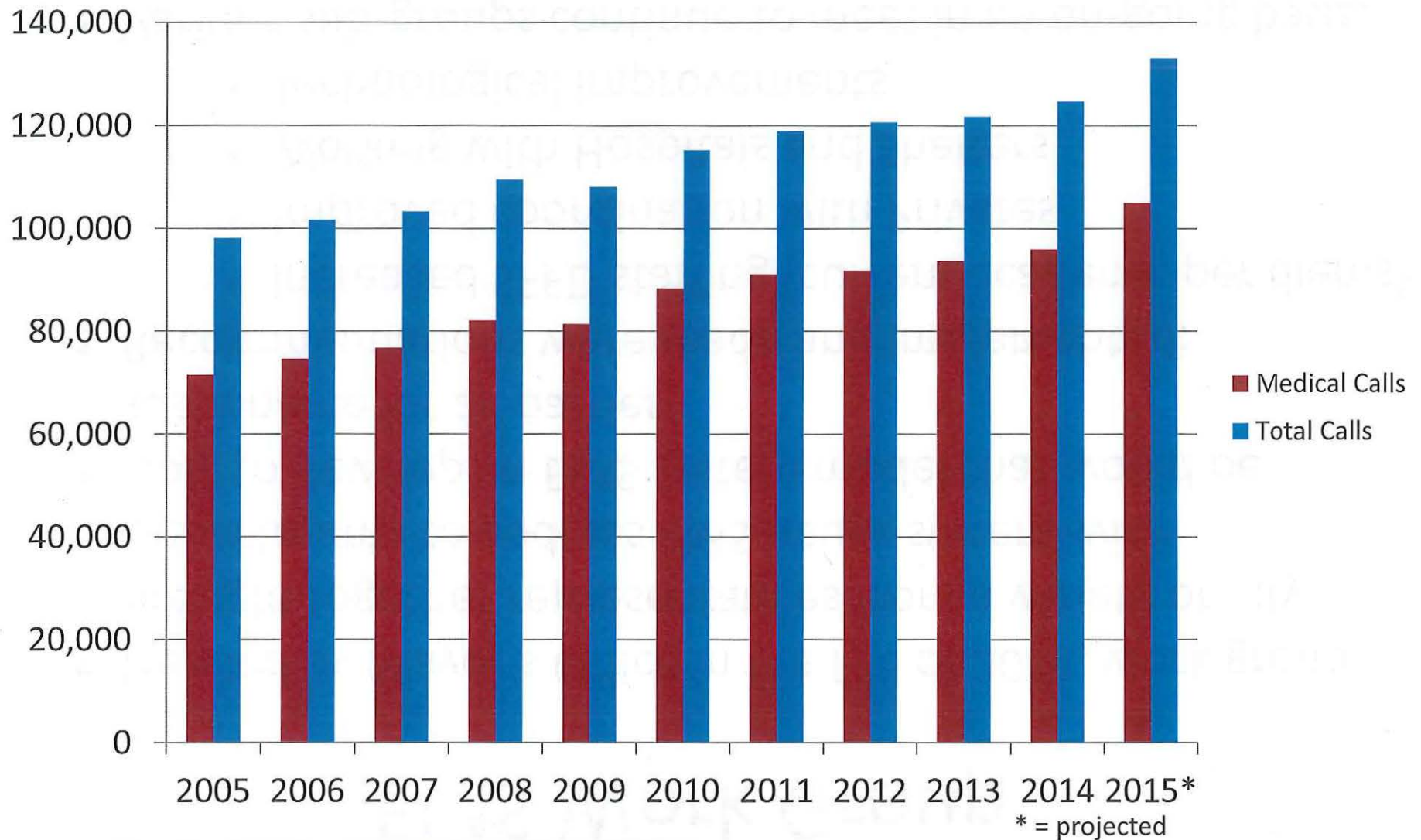
**April 22, 2015**

---

# Presentation Agenda

- Overall Operational Trends
  - EMS work group
  - Response Times
  - Hiring/Staffing
  - Fleet
  - Facilities/Capital
  - Addressing Needs of a Growing City
  - Current Challenges
  - Community Outreach
- 

# Operational Trends

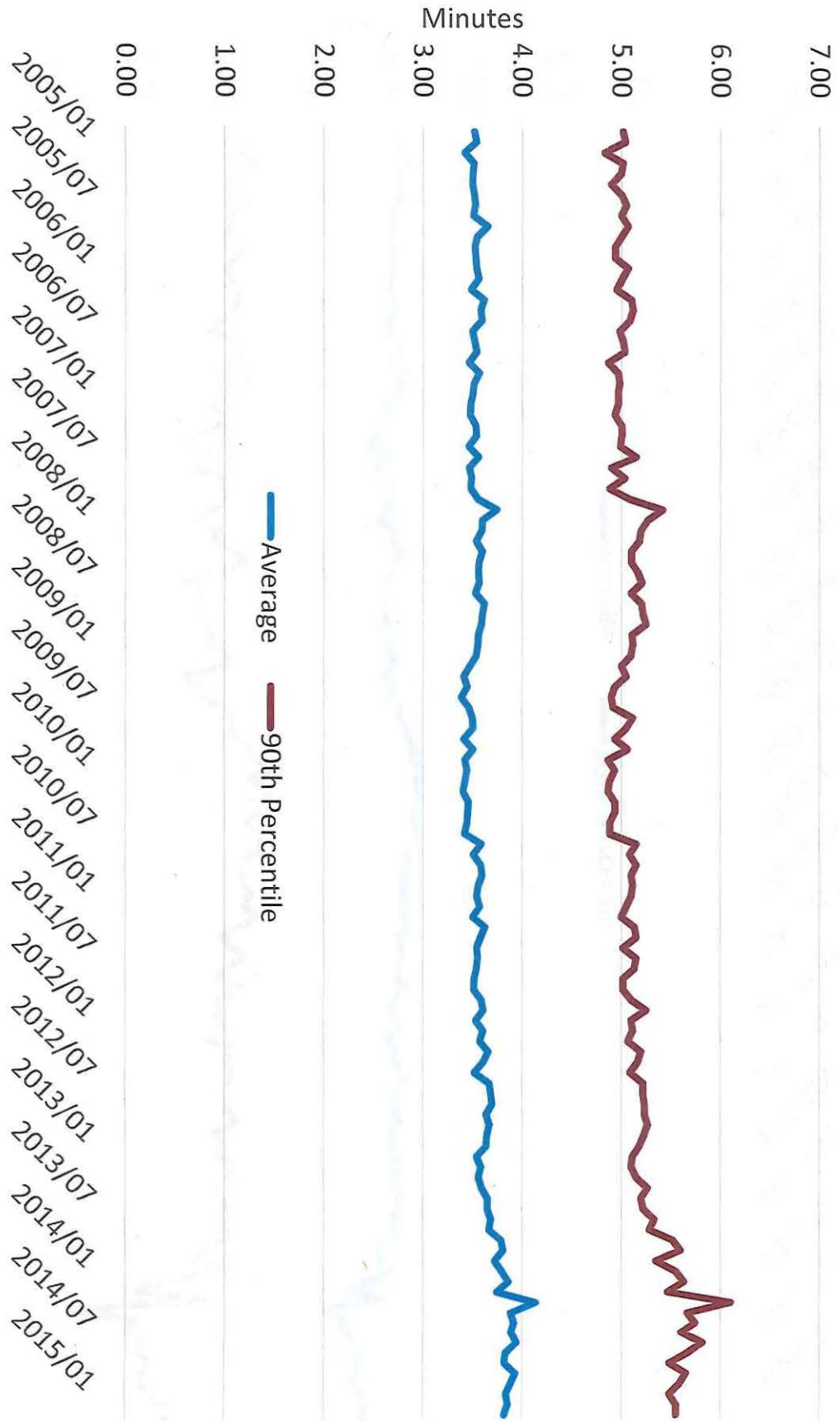


---

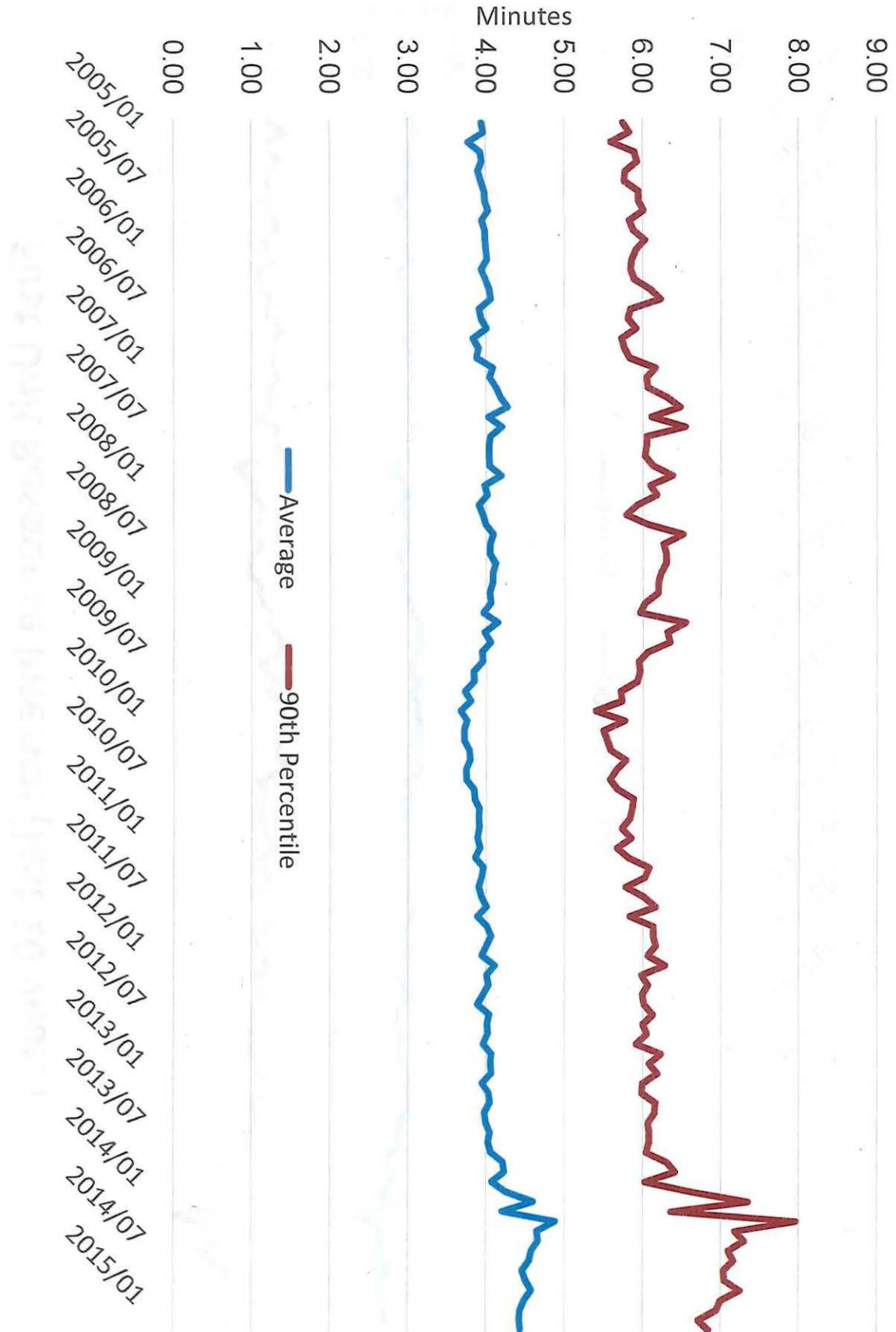
# EMS Work Group

- Headed by Mayor's Office in the Fall of 2014, work group brought together representatives from a variety of City Departments to address EMS issues system-wide
  - Goal to develop an EMS system model that would be sustainable for all parties
  - Recommendations were made and implemented:
    - Increased SFFD staffing (current academy, per diems)
    - Improved coordination with Privates
    - Working with Hospitals and Shelters
    - Technological improvements
  - Various sub-groups continue to meet in an on-going basis, and continual evaluation and monitoring
-

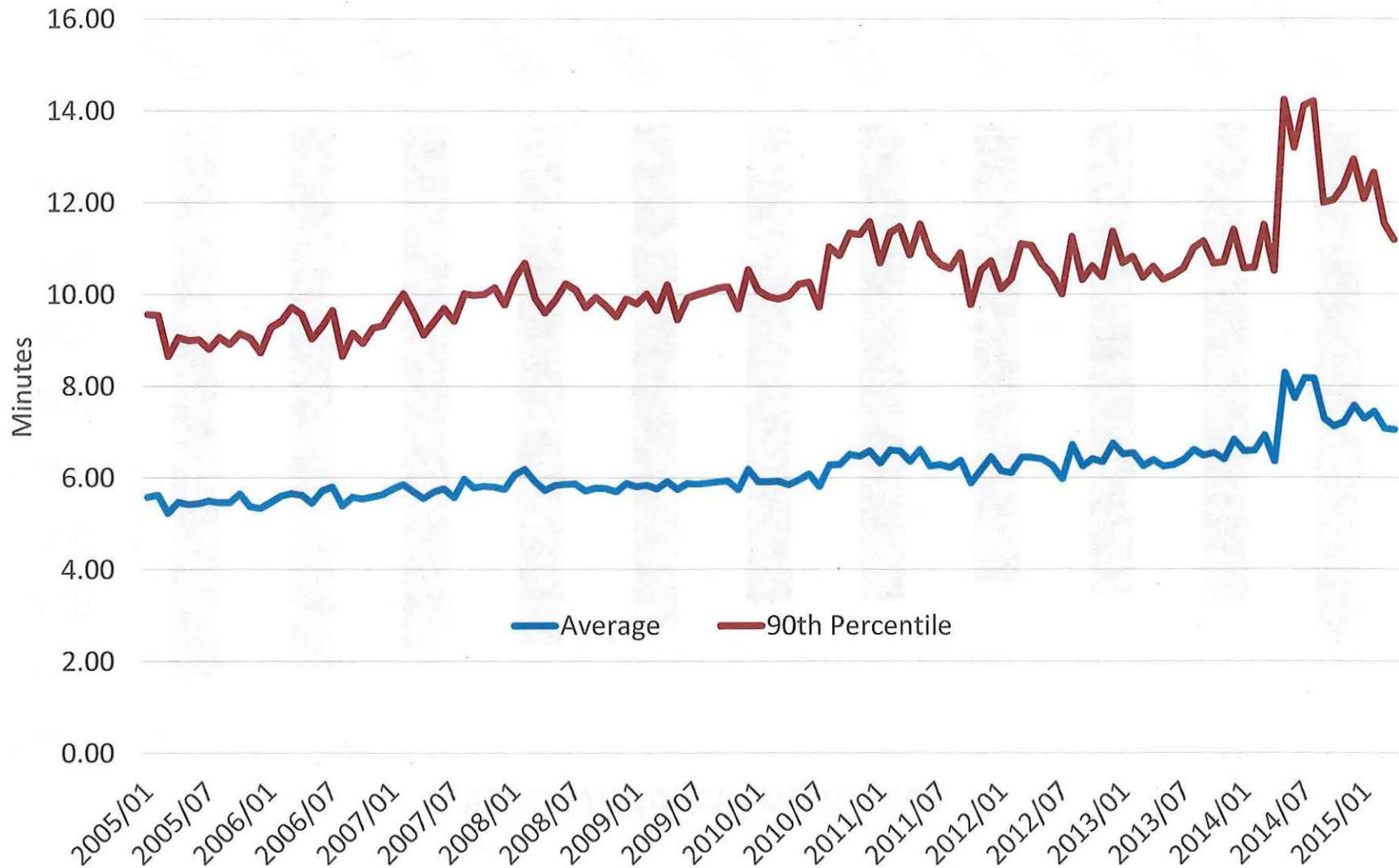
# First Unit Response Interval (last 10 years)



# ALS Response Interval (last 10 years)

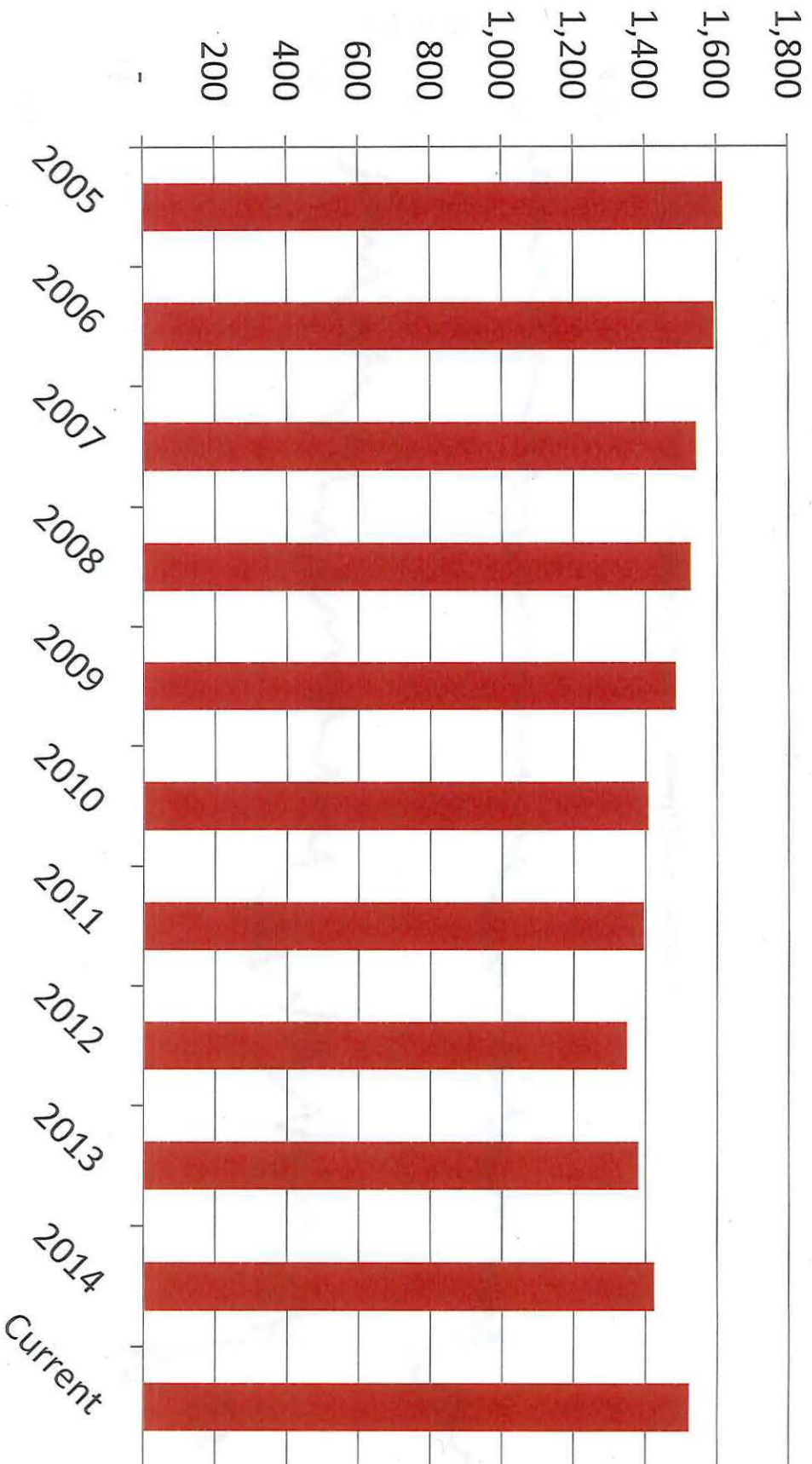


## Code 3 Ambulance Response Interval (last 10 years)



# Hiring/Staffing

## SFFD Uniform Employees





---

---

# Fleet

- Due to budget constraints, Department has been unable to maintain a replacement plan for an aging vehicle fleet, resulting in higher maintenance and repair costs
  - Department has a number of vehicles in a frontline capacity that should be used only in relief or even retired per NFPA guidelines
  - In FY13-14 and 14-15, Department has taken receipt of the following:
    - 19 Ambulances
    - 10 Engines
    - 6 Trucks (in delivery process)
-

---

# Facilities/Capital

- Fire Department operates approximately 50 facilities with hundreds of millions of dollars in deferred maintenance and repair issues due to lack of funding
- Department has been fortunate to be allocated Earthquake Safety and Emergency Response (ESER) GO bond funding:
  - 2010 ESER bond - \$73 million
  - 2014 ESER bond - \$85 million
- ESER bond has funded work from focused scope (windows, roofs) to complete teardowns (Stations 5, 16)
- Working with DPW on comprehensive assessment of Department properties



10601

---

# Needs of a Growing City

- Growth of San Francisco has impact to the services provided by the San Francisco Fire Department and to the resources required to meet service demands
  - Long-term planning is essential for Department to meet current and projected demands for services
  - EMS/Ambulance System Planning
    - SFFD work closely with Mayor's Office and DEM to develop a sustainable EMS system model for the City of San Francisco, given State mandates and cooperation of private partners (staffing levels, call volume growth, ancillary programs)
    - Planning for new EMS deployment facility as part of 2016 Health Bond
-

---

---

# Needs of a Growing City

- Fire Suppression Planning
  - Recent opening last month of new Fire Station 4 in Mission Bay as part of the Public Safety Building
  - Planning and analysis of Fire Department resources as related to projected future developments around the City, including Treasure Island/ Yerba Buena Island, Hunters Point, and Candlestick Point



---

---

# Current Challenges

- Long term planning for a complex, growing City with limited planning resources
  - Ensure sufficient resources to meet current and future demands for services
  - Maintaining sufficient staffing levels with projected increase in retirements in upcoming fiscal years
  - IT Infrastructure
  - Facility deferred maintenance and repairs
  - Fleet replacement
-

---

---

# Community Outreach

- The Fire Department's NERT program will be celebrating its 25<sup>th</sup> anniversary in 2015. The NERT program is offered free of charge to people who live or work in San Francisco. Since inception, nearly 26,000 have been trained in personal preparedness.
- The Fire Department is teaming up with the Red Cross on a smoke alarm outreach program.
- The Fire Department continues to partner with the Alisa Ann Ruch Burn Foundation to educate school-age children through the San Francisco Firefighters In Safety Education (SFFISE) Program.
- The Fire Department's Asthma Outreach Program is partnering with the Unified School District to conduct both the Open Airways for Schools (Elementary School students) and Kickin' Asthma (Middle School students).

