

# Utility Pole Policies and Procedures

San Francisco Board of Supervisors

*Public Safety and Neighborhood Services Committee*

July 25, 2019



Together, Building  
a Better California



## What We'll Cover

**Purpose:** Discuss utility practices, policies and protocols regarding the installation of new wiring, maintenance of existing wires, inspections of abandoned wiring and the condition of utility poles.

**Background:** PG&E owns approximately 32,000 (22,000 jointly owned) utility poles in San Francisco, a majority of which support electric distribution.

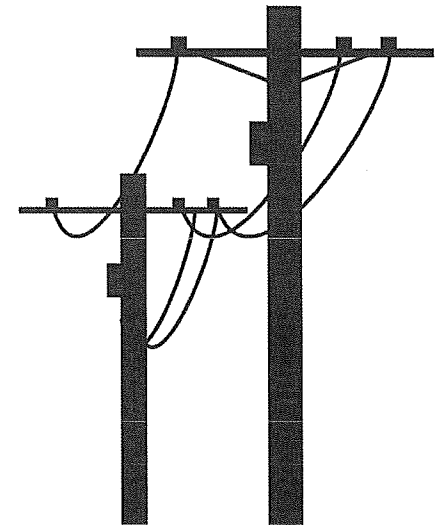
### Topics:

- Overview
- Safety
- System Protocols & Requirements



## Overview

- In San Francisco, PG&E has approx. **400 miles of overhead** and **700 miles of underground** distribution lines
- The majority of poles in San Francisco are **jointly-owned** between PG&E and other companies, such as AT&T
- Joint pole owners, like PG&E are members of the **Northern California Joint Pole Association (NCJPA)**
- **NCJPA** was established to help facilitate ownership, maintenance, relinquishment and removal of **jointly-owned poles**





## Routine Patrols and Inspections

In accordance with CPUC regulations, PG&E performs **patrols and detailed inspections** of poles and associated equipment.

**Patrols** are performed annually for poles in urban environments like San Francisco, and every two years for poles located in rural environments.

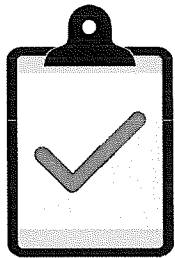
**Detailed inspections** are conducted every five years for overhead lines and every three years for facilities underground.



- Both patrols and detailed inspections **identify and address safety or reliability issues** with our power poles (leaning, potentially overloaded, deteriorated or damaged, etc.)
- When a pole is **tested and found not to meet minimum requirements**, a process is followed that may include **performing pole loading calculations and/or repairing, reinforcing, or replacing the pole as necessary**
- In San Francisco, we replaced **701 Poles** in 2018



## System Protocols & Requirements



- CPUC General Order 95 outlines requirements for all of California's overhead line design, construction, and maintenance
- GO 95 provides local exchange carriers like Verizon, AT&T and Comcast the ability to access utility poles and make attachments
- Before adding any attachments or electric load to a pole, it must be tested and approved first.



## Joint Use Map Portal



The Joint Use Map Portal (JUMP) is an easy-to-use tool available to authorized members to search for pole information including:

- Location
- Pole composition (i.e. type of material, height, circumference)
- Remaining strength
- Most recent inspection test and results



## Order Instituting Investigation (OII)

CPUC recently issued an **Order Instituting Investigation (OII)** into the possible creation of a **shared database or statewide census of utility poles and conduit** in California

PG&E, as well as a 25 other utility and telecom partners **attended a series of workshops** held in Fall 2018, and January 2019 to discuss the feasibility of such a database

Some of these components include:

- Pole location information (e.g., GIS coordinates and/or address)
- Name of any other joint owner(s); percentage ownership of each joint owner(s)
- Number of pending attachment application(s) (if any) and/or make-ready work (if available)
- Notice of any pending pole replacement/reinforcement and date (if available)

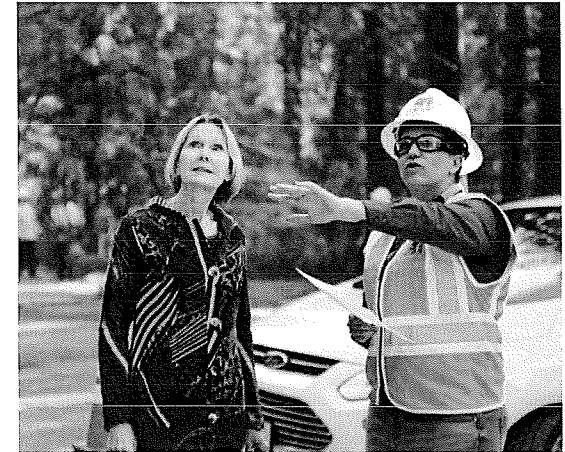


## Undergrounding

As part of our efforts to make our infrastructure more resilient, **we are evaluating areas where undergrounding can best serve our long-term safety and reliability efforts** to increase system resiliency.

Undergrounding is a **complex process which can take years to complete**. In addition underground lines are not immune to weather and **may still be impacted by equipment issues, lightning strikes, flooding, earthquakes, and excavation damage** by a third party and can take longer to repair than overhead lines when damage occurs.

More information can be found at **[pge.com/undergrounding](http://pge.com/undergrounding)**.





Thank You



Together, Building  
a Better California