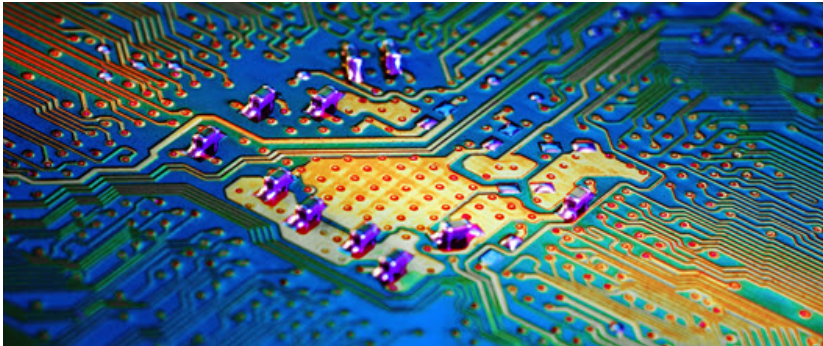




Risk | Reinsurance | Human Resources

Careers



Executive Bios



Gregory C. Case
President and Chief Executive Officer



Kristi Savacool
CEO, Aon Hewitt



Christa Davies
Executive Vice President and Chief Financial Officer







Peter Lieb
Executive Vice President and General Counsel




Tony Goland
Executive Vice President and Chief Human Resources Officer



John G. Bruno
Chief Operations Officer


Tweets by @Aon_plc


Aon
 @Aon_plc

Our own @SteveBowenWx sat down w/ @WSJ to discuss the economic impact of the unexpectedly severe weather of 2017: aon.io/2qsjWRq

Property Insurers Hit By Worst Fi...
 Hail, tornadoes and an ice storm tu...
wsj.com

03 May


Aon
 @Aon_plc

What lessons can #Millennials offer businesses to improve health-related programs? aon.io/2oUA52d

[Embed](#)
[View on Twitter](#)



Michael O'Connor
CEO, Aon Risk Solutions



Eric Andersen
CEO, Aon Benfield



John Cullen
Chief Executive Officer, Aon Risk Solutions EMEA



Bryon G. Ehrhart
Global Head of Strategic Growth & Development



Paul Y. Mang
Global CEO of Analytics, Aon



Dominic Christian
Executive Chairman of Aon Benfield International and CEO
of Aon UK Limited



Cary Grace
CEO, Global Retirement & Investments



Maggie Westdale
Chief Financial Officer, Aon Benfield



Katie Rooney
Chief Financial Officer, Aon Hewitt



John Zern
Executive Vice President and Global Health Leader



Philip B. Clement
Global Chief Marketing Officer

 [Email](#)  [Print](#)
