

OVERVIEW OF CITYWIDE AUTO BURGLARIES

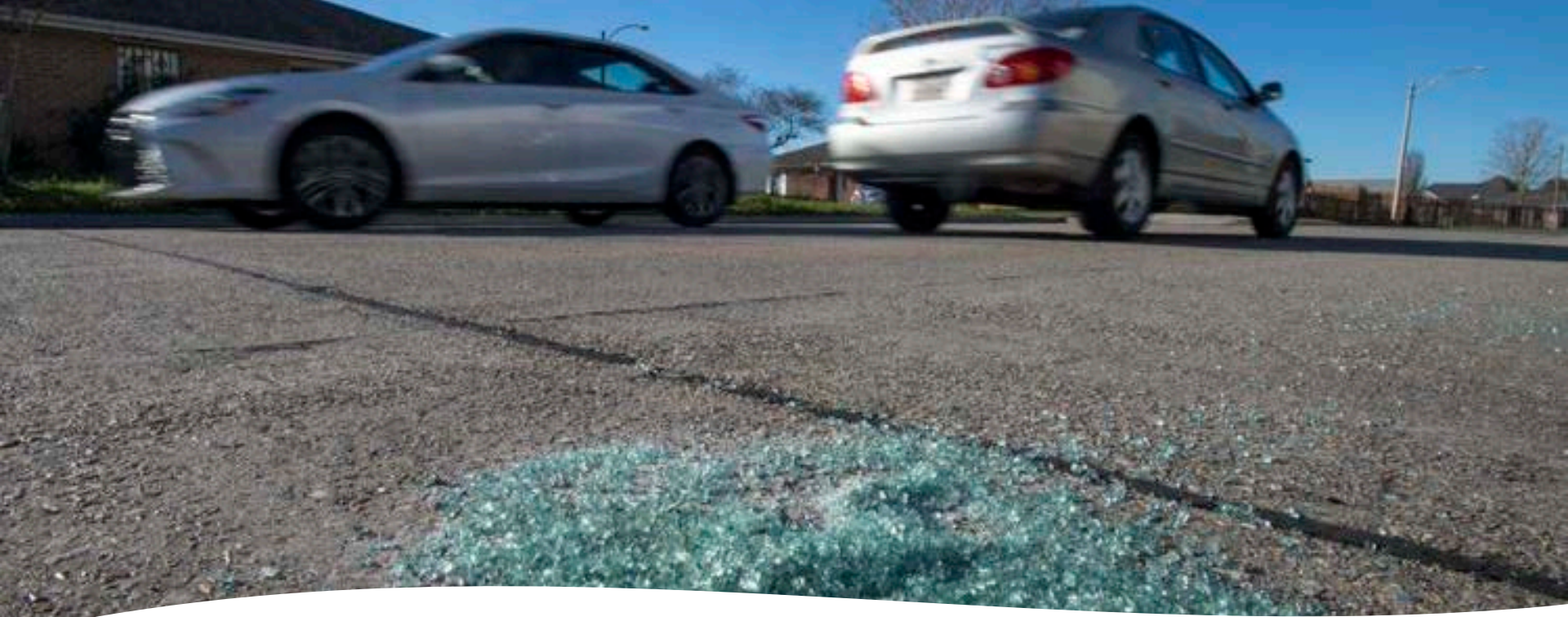


CITY & COUNTY OF SAN FRANCISCO



SAN FRANCISCO POLICE DEPARTMENT
CITY & COUNTY OF SAN FRANCISCO

09.21.23

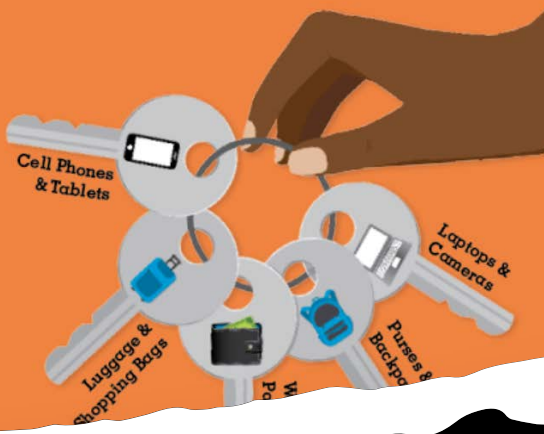


SFPD AND AUTO- BURGLARIES

Chief Scott said, "I'm disturbed every time I see these crimes on social media or the local news. Auto break ins are devastating to residents and visitors who should be having a joyous experience in San Francisco rather than the nightmare of losing their valuable personal belongings."



THE KEYS TO
PARKED CAR
SAFETY ARE IN
YOUR HANDS!



Park Smart!

If you love it, don't leave it.

Car thieves only need seconds to break into your car. So Park Smart and take all valuables with you — from small items like cell phones and sunglasses — to bigger items — luggage and backpacks. Don't forget to take your keys!

PARK SMART



TAKE
YOUR KEYS



HIDE
YOUR BELONGINGS



FILL



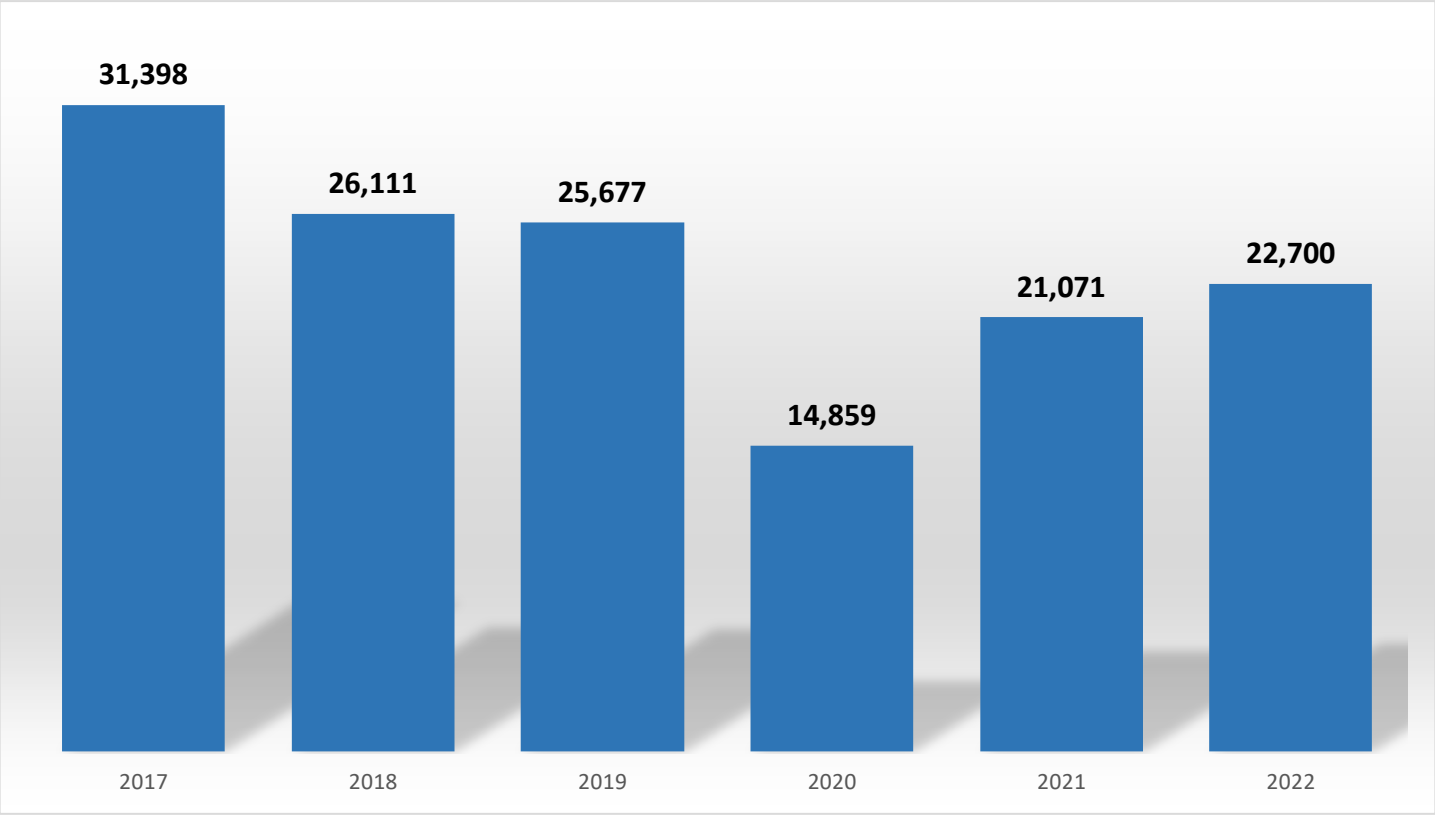


If you love it,
don't leave it.

Car break-ins are
an unfortunate reality
in San Francisco.
Please do not leave
any belongings in
your vehicle.

Current State of Auto Burglaries in San Francisco

CITYWIDE AUTOBURGLARY DATA YEAR-TO-YEAR COMPARISON



Source: CDW using BI tools end-of-year reports

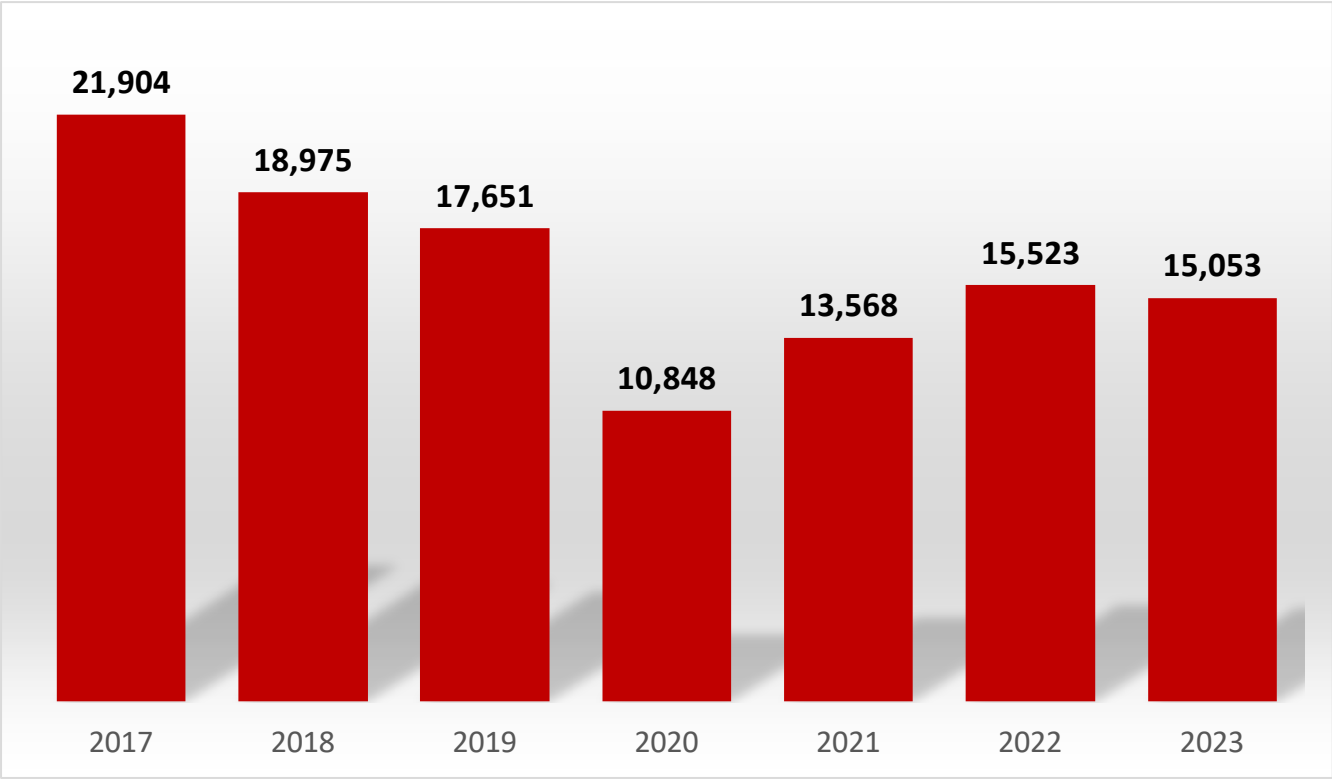
2021 vs 2022 ↑ 8%

2022 vs 2017 ↓ 28%



CITYWIDE AUTOBURGLARY DATA

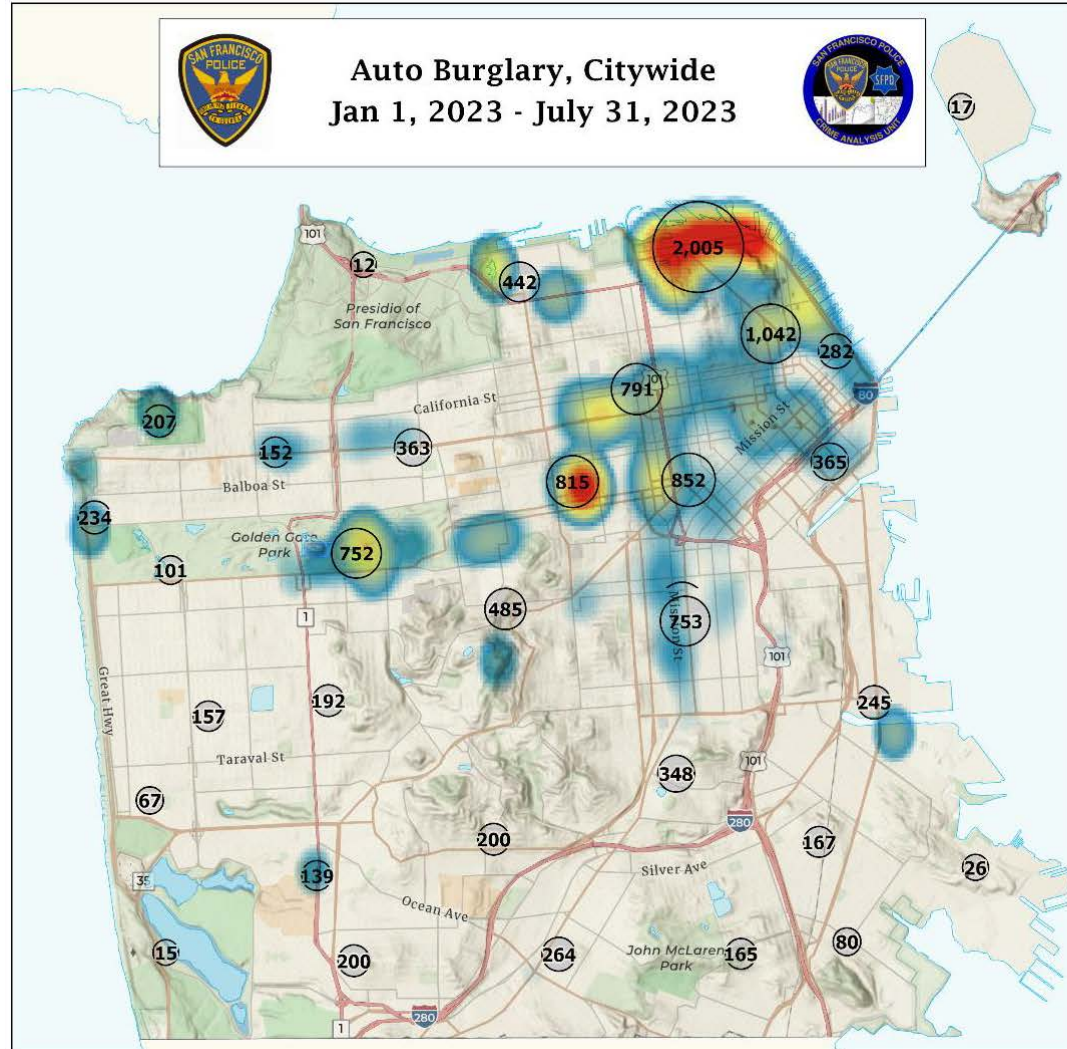
JANUARY 1 – SEPTEMBER 17



Source: CDW using BI tools dated 09.18.23



AUTO-BURGLARIES



Key Impacted Areas:

- **Co. A** – Embarcadero, Pier 39, Ghiradelli Square, Union Square
- **Co. E** - Alamo Square, Palace of Fine Arts, Japantown
- **Co. F** - Twin Peaks/Haight Street Corridor
- **Co. G** - Golden Gate Park/Legion of Honor
- **Co. I** - Stonestown Galeria
- **Any/all parking lots/structures**





ARRESTS

City-wide Plainclothes Operations January through May 2023

- 21 successful operations
- 37 subjects arrested
- 14 Firearms recovered





SFPD HISTORICAL STRATEGIES

- Increased patrols in high-crime tourist areas
- Increased high-visibility fixed posts
- Plain Clothes units in high-crime tourist areas





SFPD CURRENT STRATEGIES

**Fixed Posts &
Arrests**

**Investigative
Interventions**

Surveillance Tools

**Community &
City Department
Collaborations**



QUESTIONS?



SAN FRANCISCO POLICE DEPARTMENT

