

Department of Public Health



Homeless Seniors and Homeless Veterans

Board of Supervisors
Budget and Finance Committee

May 21, 2014

Department of Public Health

Homeless Data #1

	Homeless Count	DAH Population	Random Sample of Street/Shelter Homeless
Seniors	17%	58%	N/A
Vets*	11%	TBD	15%

Department of Public Health

Homeless Data #2

	Community Behavioral Health Services - Substance Abuse Services	Community Behavioral Health Services - Mental Health Services	Health Care for the Homeless Program
Seniors	14%	4%	45%
Vets*	23% of Vets served identified as homeless	45% of Vets served identified as homeless**	TBD

Department of Public Health Diagnoses and Conditions

History of Serious Health Conditions*	All	Seniors
Serious Medical Conditions	57.4%	73%
Serious Psych Conditions	59.3%	59.7%
Substance Abuse Conditions	66.4%	65%
All Three	34.9%	40%

*Serious health conditions fall under the Elixhauser diagnoses that contribute to early mortality (Quan et al, Med Care 2005).

General Trends

- Majority of homeless in SF will be over 55 in the next few years.
- Homeless seniors are:
 - at higher risk for death;
 - at higher risk for being high users of the health care system;
 - more likely to have more than one medical condition and complex medication regiment;
 - more likely to need access to RN services to benefit from medical care.
- Homeless seniors should be:
 - prioritized towards supportive housing;
 - Prioritized toward most services enriched housing.

Department of Public Health Programs and Services

- **Services and programming for homeless seniors include:**
 - Curry Senior Center
 - CC Hospitality House Drop-in Center for Homeless Seniors
 - Ripins House
 - CATS - Golden Gate for Seniors
 - St. Clare's Home for Seniors
 - Primary Care Clinics – Older Adult Programs
 - Curry Senior Center
 - SFGH Ward 86 - Silver Project
 - Laguna Honda Hospital
 - Stepping Stone – Mission Creek Adult Day Health Center
 - Family Service Agency - Older Adult Programs

DAH Sites for Homeless Adults

Pacific Bay Inn (1999)	75	Knox Apartments (2006)	15
Windsor Hotel (1999)	91	Willam Penn (2006)	10
Broderick St. RCF (2001)	33	Dalt, Ritz, Ambassador (2007)	21
Star Hotel (2003)	55	149 Mason Street Apartments (2010)	55
Camelot Hotel (2003)	54	Aarti (2011)	40
Empress Hotel (2004)	89	Richardson Apartments (2011)	120
Folsom/Dore (2005)	40	Casa Quezada (2011)	53
Plaza Hotel (2006)	106	Arlington Rehab (2012)	79
Arlington Residence (2006)	24	Veterans Common	8
Bayanihan House (2006)	10	Kelly Cullen Community (2012)	172
Eddy Street Apartments	15	Rene Cazenave Apartments (2013)	120
Hotel Isabel (2006)	4	Total DAH Units W/O Age Limit	1,289

DAH Sites for Homeless Seniors

DAH Sites for Homeless Seniors

LeNain Hotel (2000)	86
Civic Center Res. (2004)	60
West Hotel (2004)	40
Mission Creek (2006)	51
Cambridge (2008)	5
Parkview Terrace (2008)	20
Mosaica Apartments (2008)	11
990 Polk Street Apartments (2008)	50
Edith Witt Senior Community (2010)	27
Armstrong Place Senior Housing (2011)	23
Coronet Senior Housing (2011)	25
Mary Helen Rogers Senior Comm. (2013)	20
TOTAL	418

Pipeline Sites for Homeless Seniors

Vera Haile Senior Comm. (9/2014)	18
Rosa Parks II (2/2015)	20
Carroll Avenue Senior Comm. (2/2015)	23
Total Senior Pipeline Units	61

DAH Senior Sites

Mission Creek Senior Community



- 225 Berry Street
- Opened in 2006
- Seniors 62 \leq
- 139 total units
- 51 DAH units
- Adult Day Health Center on site

DAH Senior Sites

Parkview Terraces Apartments



- 871 Turk Street
- Opened in 2008
- Serves homeless seniors (ages 55+)
- 101 total units
- 20 DAH units

DAH Senior Sites

990 Polk Senior Housing



- 990 Polk Street @ Geary
- Opened in 2008
- Serves homeless seniors (ages 55+)
- 110 total units
- 50 DAH units, 10 units for severely mentally ill persons

Mosaica



- 2949 Alabama St.
- Opened March 2009
- Serves homeless seniors (ages 62+)
- 151 total units
- 11 DAH units

DAH Senior Sites

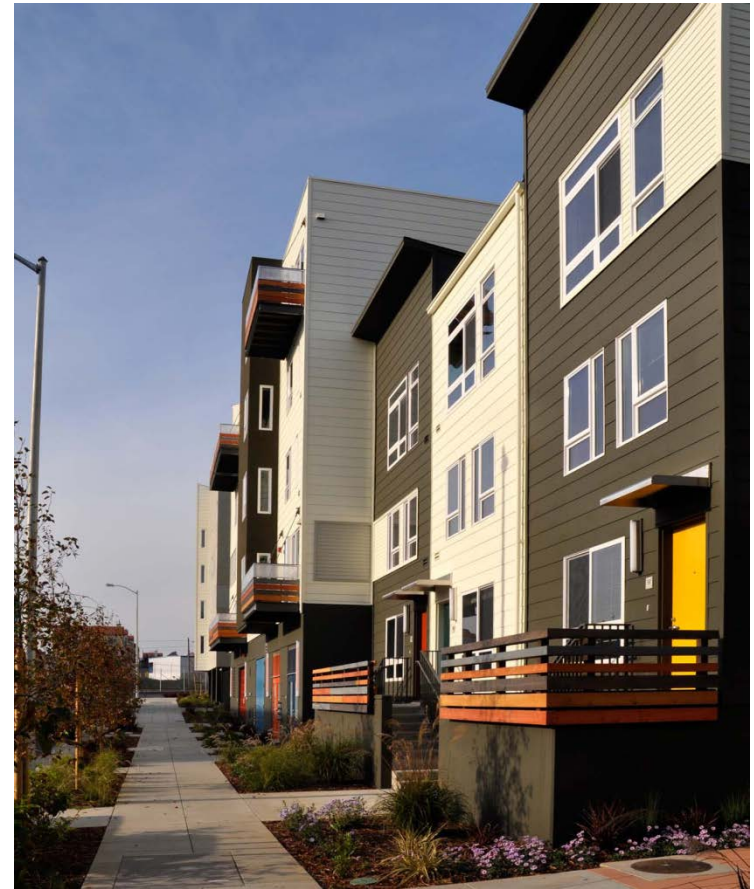
Edith Witt Senior Community

66 9th Street, 107 total units; 27 DAH Units - 2011



Armstrong Place

5600 3rd Street, 116 total units; 23 DAH units - 2011



The Coronet

3575 Geary Street, 150 units; 25 DAH Units - 2011



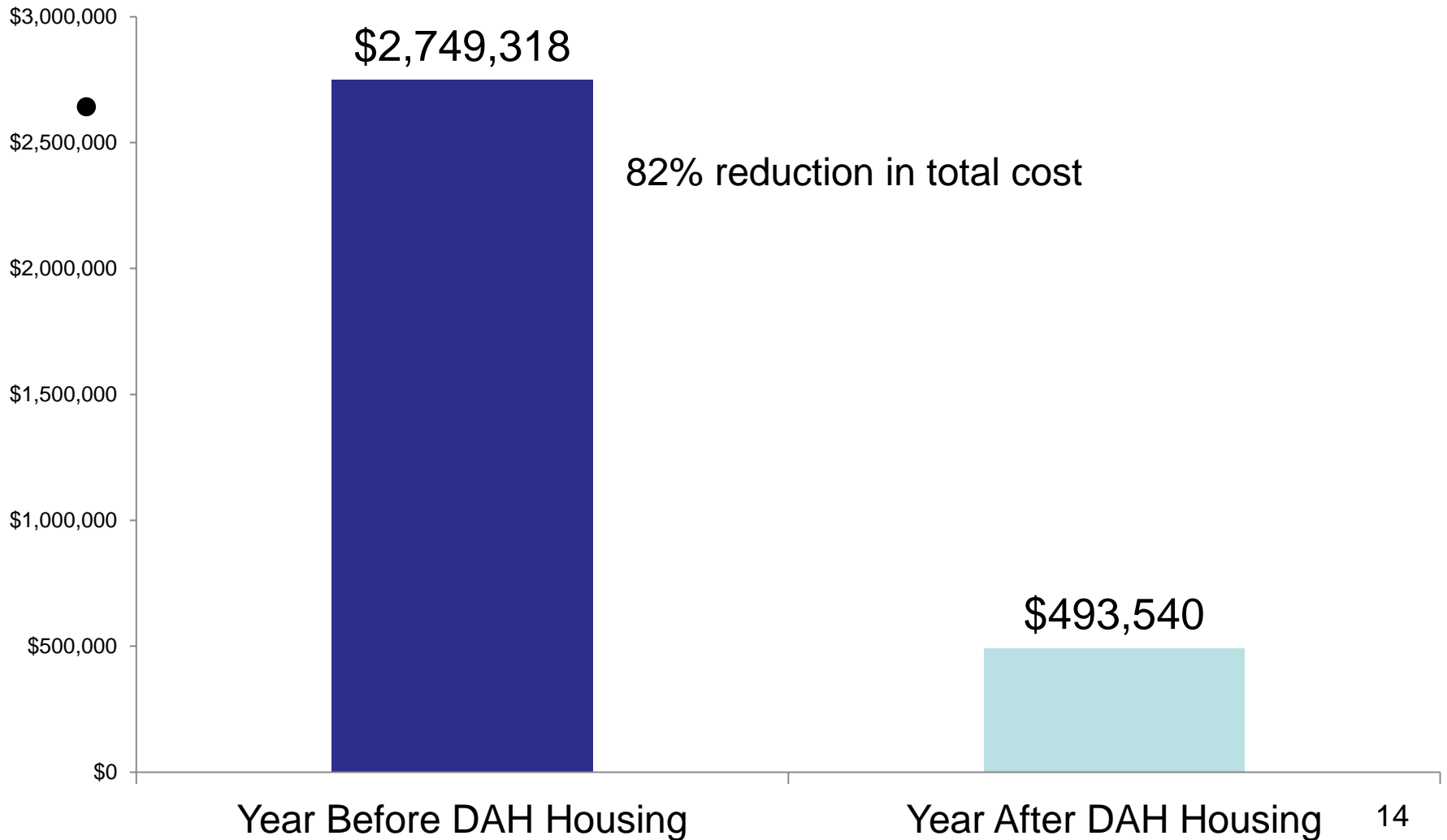
Future DAH Senior Site

Vera Haile Senior Community

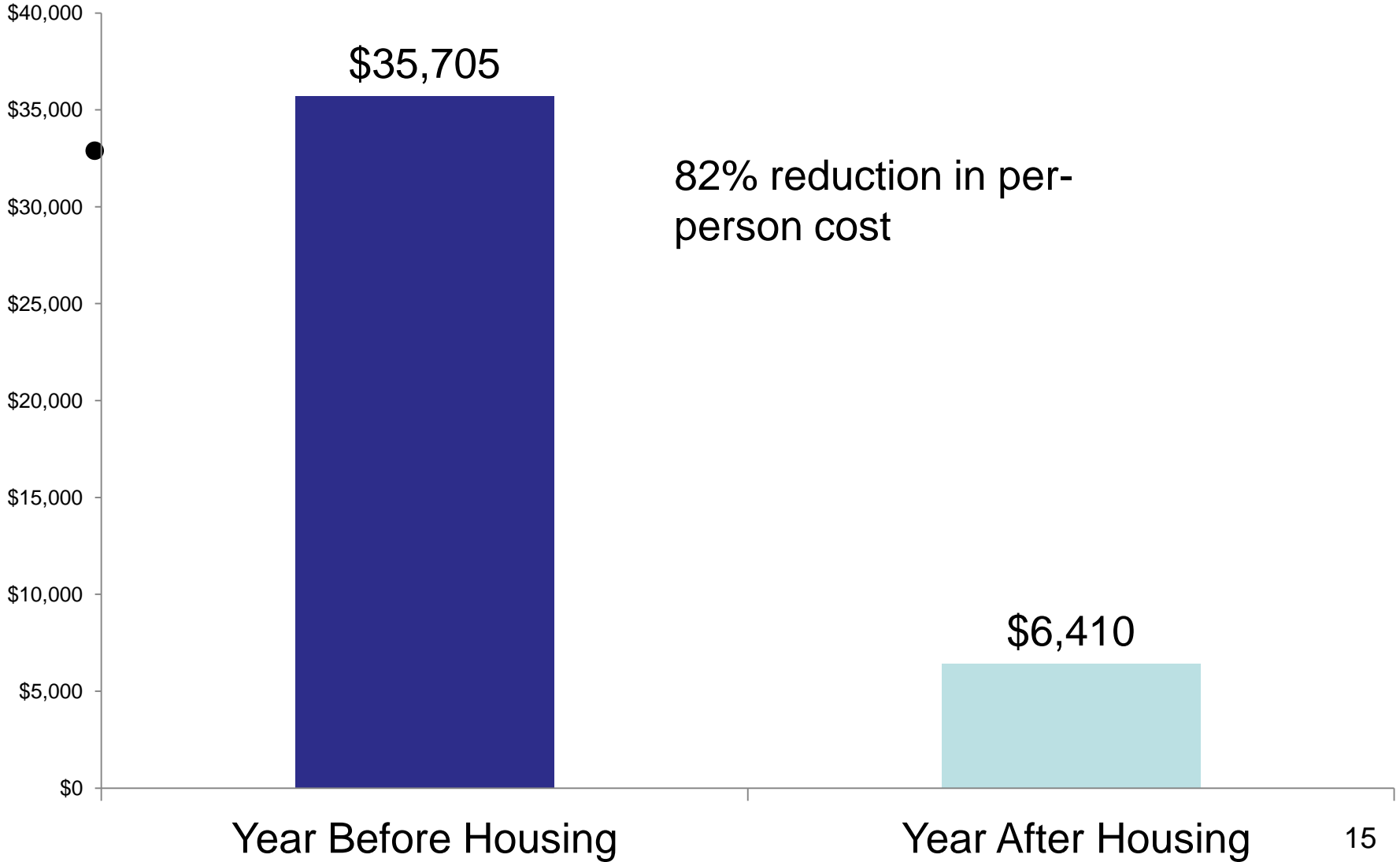


- 129 Golden Gate
- Opening in Summer 2014
- Seniors $62 \leq$
- 100 total units
- 20 DAH units

Total Cost of Healthcare Utilization for Mission Creek Residents

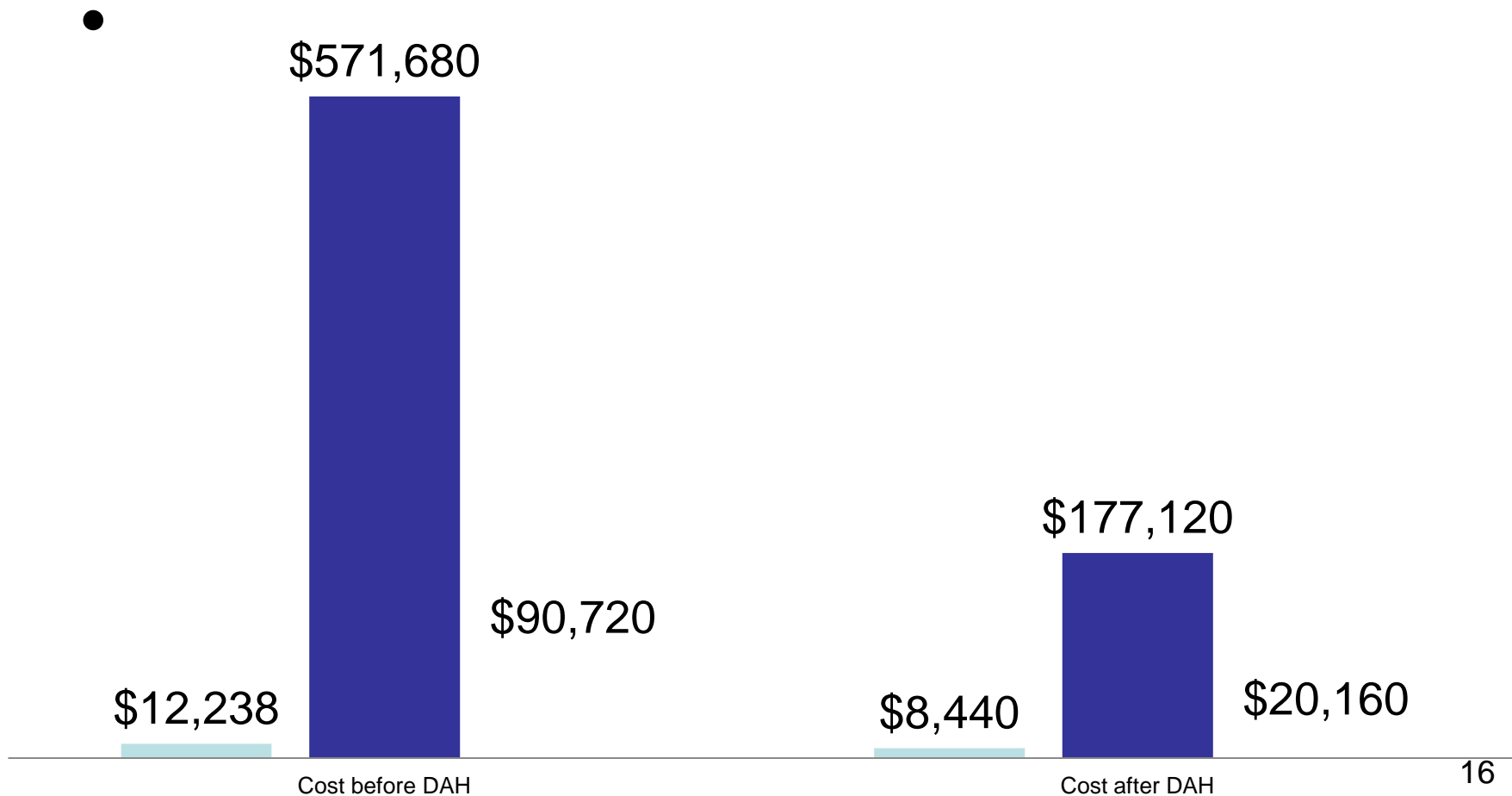


Total Per-Person Cost of Healthcare Utilization for Mission Creek Residents



Cost of Health Care Utilization 1 year Before and After DAH Placement

■ ED visits ■ Inpatient days ■ Psych Inpatient days



Utilization and Cost of Skilled Nursing Facilities 1 year Before and After DAH Placement

