

**MHW Note:** The Mean High Water (MHW) line shown hereon is based on a field survey and represents the approximate location of MHW elevation referenced in the report entitled "Treasure Island Development Project, Coastal Flooding Study" prepared by Moffett and Nishid, dated April 2006. The study lists the MHW elevation as 5.60 feet (MLLW datum) in Table 2, Page 5. This elevation equates to 105.60 feet (NAVD88 +100.00 feet) (NAVD88 HEIGHTS PER CFSF 2013 NAVD88 DATUM 2ND ORDER LEVELING SURVEY).

LOT INFORMATION			
LOT NO.	AREA	ASSESSOR'S PARCEL NUMBER	USE
LOT 1	43,084 SF	8905-001	FUTURE DEVELOPMENT
LOT 2	30,148 SF	8905-002	FUTURE DEVELOPMENT
LOT 3	23,223 SF	8906-001	FUTURE DEVELOPMENT
LOT 4	28,837 SF	8906-002	FUTURE DEVELOPMENT
LOT 5	44,043 SF	8906-003	FUTURE DEVELOPMENT
LOT 6	11,300 SF	8906-004	FUTURE DEVELOPMENT
LOT 7	54,186 SF	8903-001	FUTURE DEVELOPMENT
LOT 8	40,854 SF	8903-002	FUTURE DEVELOPMENT
LOT 9	50,591 SF	8904-001	FUTURE DEVELOPMENT
LOT 10	22,214 SF	8904-002	FUTURE DEVELOPMENT
LOT 11	49,691 SF	8904-003	FUTURE DEVELOPMENT
LOT 12	32,711 SF	8902-001	FUTURE DEVELOPMENT
LOT 13	35,294 SF	8902-002	FUTURE DEVELOPMENT
LOT 14	118,265 SF	8902-003	EXISTING DEVELOPMENT
LOT 15	44,341 SF	8901-001	EXISTING DEVELOPMENT
LOT 16	211,258 SF	8901-002	EXISTING DEVELOPMENT
LOT Q	82,882 SF	8945-001	PARK
LOT R	428,232 SF	8946-001	PARK
LOT 19	282,758 SF	8948-001	FUTURE DEVELOPMENT
LOT S	98,421 SF	8950-001	PARK
LOT 21	61,345 SF	8952-001	FUTURE DEVELOPMENT
LOT T	94,182 SF	8953-001	PARK
LOT 23	233,564 SF	8954-001	FUTURE DEVELOPMENT
LOT 24	113,862 SF	8949-001	FUTURE DEVELOPMENT
LOT 25	60,975 SF	8947-001	EXISTING BUILDING SITE
LOT U	36,979 SF	8956-001	OPEN SPACE

LOT INFORMATION			
LOT NO.	AREA	USE	
LOT A	43,856 SF	ROADWAY AND UTILITIES	
LOT B	41,802 SF	ROADWAY AND UTILITIES	
LOT C	36,350 SF	ROADWAY AND UTILITIES	
LOT D	46,856 SF	ROADWAY AND UTILITIES	
LOT E	45,403 SF	ROADWAY AND UTILITIES	
LOT F	23,797 SF	ROADWAY AND UTILITIES	
LOT G	114,978 SF	ROADWAY AND UTILITIES	
LOT H	23,708 SF	ROADWAY AND UTILITIES	
LOT I	23,708 SF	ROADWAY AND UTILITIES	
LOT J	14,513 SF	ROADWAY AND UTILITIES	
LOT K	9,188 SF	ROADWAY AND UTILITIES	
LOT L	20,856 SF	ROADWAY AND UTILITIES	
LOT M	34,376 SF	ROADWAY AND UTILITIES	
LOT N	22,376 SF	ROADWAY AND UTILITIES	
LOT O	19,800 SF	ROADWAY AND UTILITIES	
LOT P	54,989 SF	ROADWAY AND UTILITIES	
MACALLA ROAD	128,946 SF	ROADWAY AND UTILITIES	
YERBA BUENA ROAD	78,943 SF	ROADWAY AND UTILITIES	
<b>TOTAL AREA</b>	<b>3,128,134 SF</b>		<b>= 71.84 AC±</b>

**NOTES**

- ALL DISTANCES ON THIS MAP ARE GROUND DISTANCES
  - ALL DISTANCES SHOWN HEREON ARE IN U.S. SURVEY FEET AND DECIMALS THEREOF.
  - THE PROPOSED ASSESSOR PARCEL NUMBERS ARE FOR INFORMATIONAL PURPOSES ONLY AND SHOULD NOT BE RELIED UPON FOR ANY OTHER PURPOSE.
- THE FOLLOWING LOTS AND AREAS ARE SUBJECT TO EASEMENTS RESERVED IN FAVOR OF TREASURE ISLAND DEVELOPMENT AUTHORITY IN THAT CERTAIN DEED FILED FOR RECORD AS DOCUMENT NO. \_\_\_\_\_ IN THE OFFICE OF THE RECORDER OF THE CITY AND COUNTY OF SAN FRANCISCO ON \_\_\_\_\_, 2015:

- EASEMENTS FOR UTILITIES: LOTS A THROUGH G, L, M, P, MACALLA ROAD AND YERBA BUENA ROAD
- EASEMENTS FOR UTILITIES: AREAS LABELED LOT SLT-UE #XX
- EASEMENTS FOR SANITARY SEWER PUMP STATIONS: AREAS LABELED LOT XX-SSPSE

**BASIS OF BEARINGS**

A FOUND NAIL AND TAG STAMPED LS3833 - JOB CORPS CENTER BEARS N11°40'14"E, A DISTANCE OF 2758.54 FEET FROM POINT "GOAT", A FOUND GRANITE MONUMENT.

**MAP REFERENCES**

- (R1) RECORD OF SURVEY RECORDED IN BOOK "AA" OF MAPS AT PAGE 85, FILED JULY 15, 2003
- (R2) RECORD OF SURVEY 8630 RECORDED IN BOOK "FF" OF SURVEY MAPS AT PAGE 62, FILED MAY 29, 2015
- (R3) RECORD OF SURVEY 8639 RECORDED IN BOOK \_\_\_\_\_ OF SURVEY MAPS AT PAGE \_\_\_\_\_, FILED \_\_\_\_\_ 20\_\_

**DOCUMENT REFERENCES:**

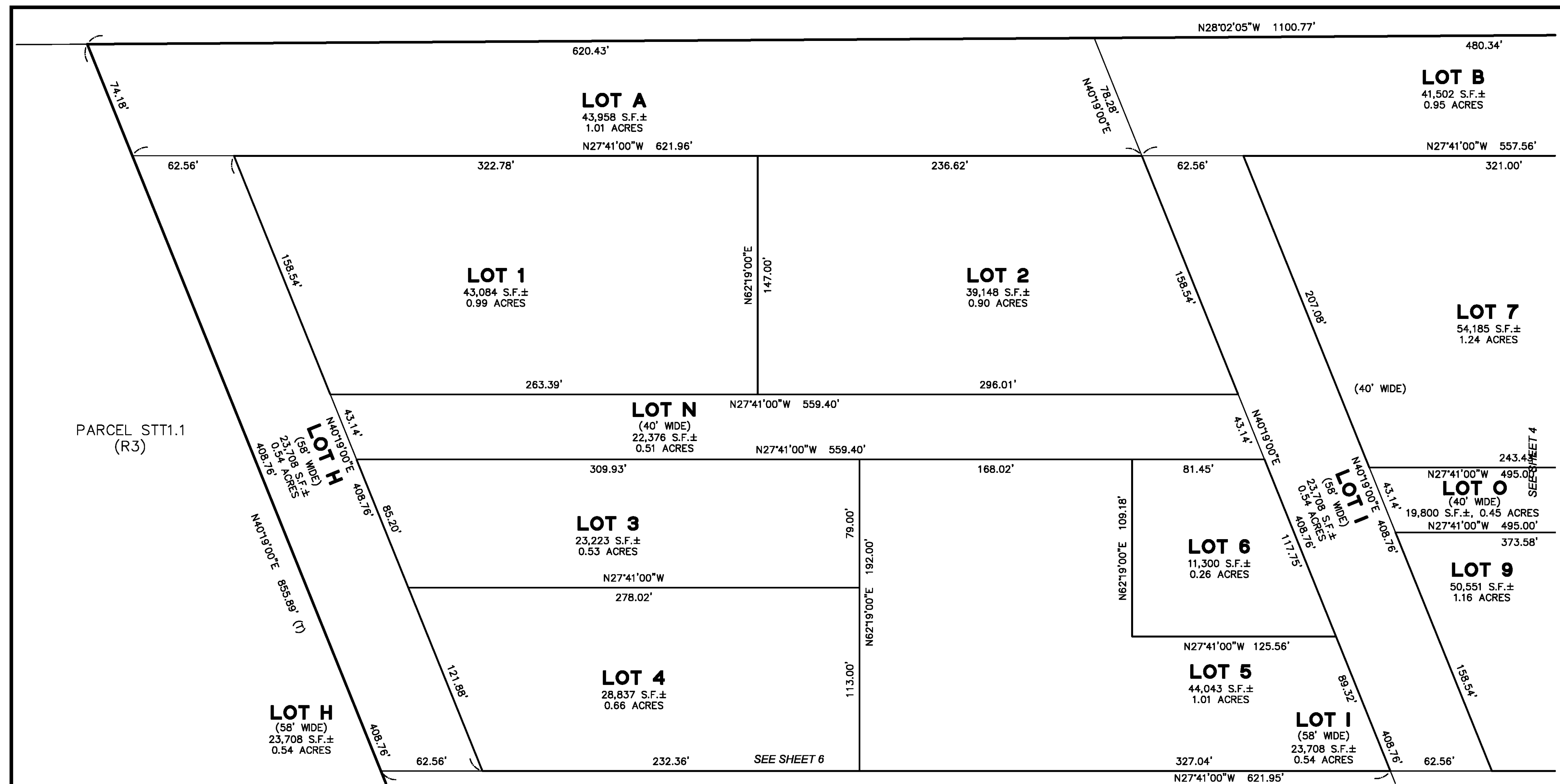
- (D1) B6 O.R. 29, EASEMENT FOR A COMMUNICATION CABLE LINE AND INCIDENTAL PURPOSES, RECORDED JANUARY 7, 1966
- (D2) B347 O.R. 284, EASEMENT FOR A COMMUNICATION CABLE LINE AND INCIDENTAL PURPOSES, RECORDED JUNE 24, 1969
- (D3) B586 O.R. 946, EASEMENT FOR A COMMUNICATION CABLE LINE AND INCIDENTAL PURPOSES, RECORDED DECEMBER 14, 1971
- (D4) C350 O.R. 552, EASEMENT FOR A COMMUNICATION CABLE AND RELATED PURPOSES AND INCIDENTAL PURPOSES, RECORDED APRIL 19, 1977
- (D5) F870 O.R. 718, EASEMENT FOR AN UNDERGROUND CONDUIT STRUCTURE FOR A SUBMARINE CABLE AND INCIDENTAL PURPOSES, RECORDED MAY 3, 1993
- (D6) 2000-G855531, EASEMENTS FOR ACCESS AND UTILITIES, RECORDED OCTOBER 26, 2000
- (D7) 2013-J798283, EASEMENTS FOR ACCESS AND UTILITIES, RECORDED NOVEMBER 27, 2013
- (D8) 2014-J853031, RECORDED MARCH 21, 2014
- (D9) 2015-K068758, EASEMENTS FOR ACCESS OVER EXISTING ROADS, EXISTING UTILITIES, REMEDIATION ACCESS AND KEY INFRASTRUCTURE UTILITIES, RECORDED MAY 29, 2015

**INDEX MAP**

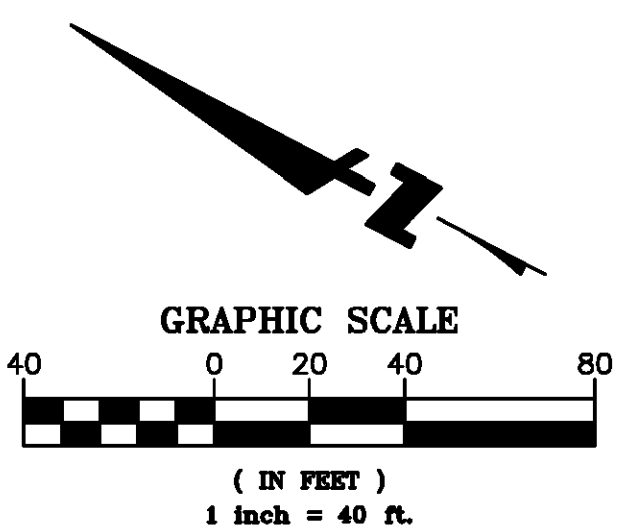
**FINAL TRANSFER MAP NO. 8674**  
BEING A PORTION OF TREASURE ISLAND AND YERBA BUENA ISLAND

BEING A SUBDIVISION OF PARCELS ST1.3 AND SPT1.5 AND A PORTION OF PARCELS ST1.1, SPT1.1, SPT1.4 AND SPT1.6 AS SAID PARCELS ARE DESCRIBED IN THOSE CERTAIN DEEDS RECORDED AS DOCUMENT NOS. \_\_\_\_\_ AND \_\_\_\_\_ ON \_\_\_\_\_, 2015 IN THE OFFICE OF THE RECORDER OF CITY AND COUNTY OF SAN FRANCISCO AND A PORTION OF PARCEL N1.3 AS DESCRIBED IN THE DEED RECORDED AS DOCUMENT NO. 2015-K068759 ON MAY 29, 2015 AND SHOWN ON THAT CERTAIN RECORD OF SURVEY MAP 8630 FILED FOR RECORD IN THE OFFICE OF THE RECORDER OF THE CITY AND COUNTY OF SAN FRANCISCO, IN BOOK FF OF SURVEY MAPS AT PAGES 62 THROUGH 78 ON MAY 29, 2015 CITY AND COUNTY OF SAN FRANCISCO CALIFORNIA

NOVEMBER 2015  
**PACIFIC LAND SURVEYS**  
OAKLAND, CALIFORNIA

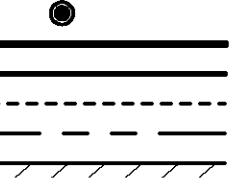


PARCEL STT1.1  
(R3)



**LEGEND**

- (M-M) OFFICIAL RECORDS
- (R) RADIAL BEARING
- ROS RECORD OF SURVEY
- S.F. SQUARE FEET
- (T) TOTAL
- LOT SLT-UE #XX UTILITY EASEMENT - SEE NOTE ON SHEET 2
- LOT ST-XX STREET EASEMENT - SEE NOTE ON SHEET 2
- LOT XX - SSPSE SANITARY SEWER PUMP STATION EASEMENT - SEE NOTE ON SHEET 2



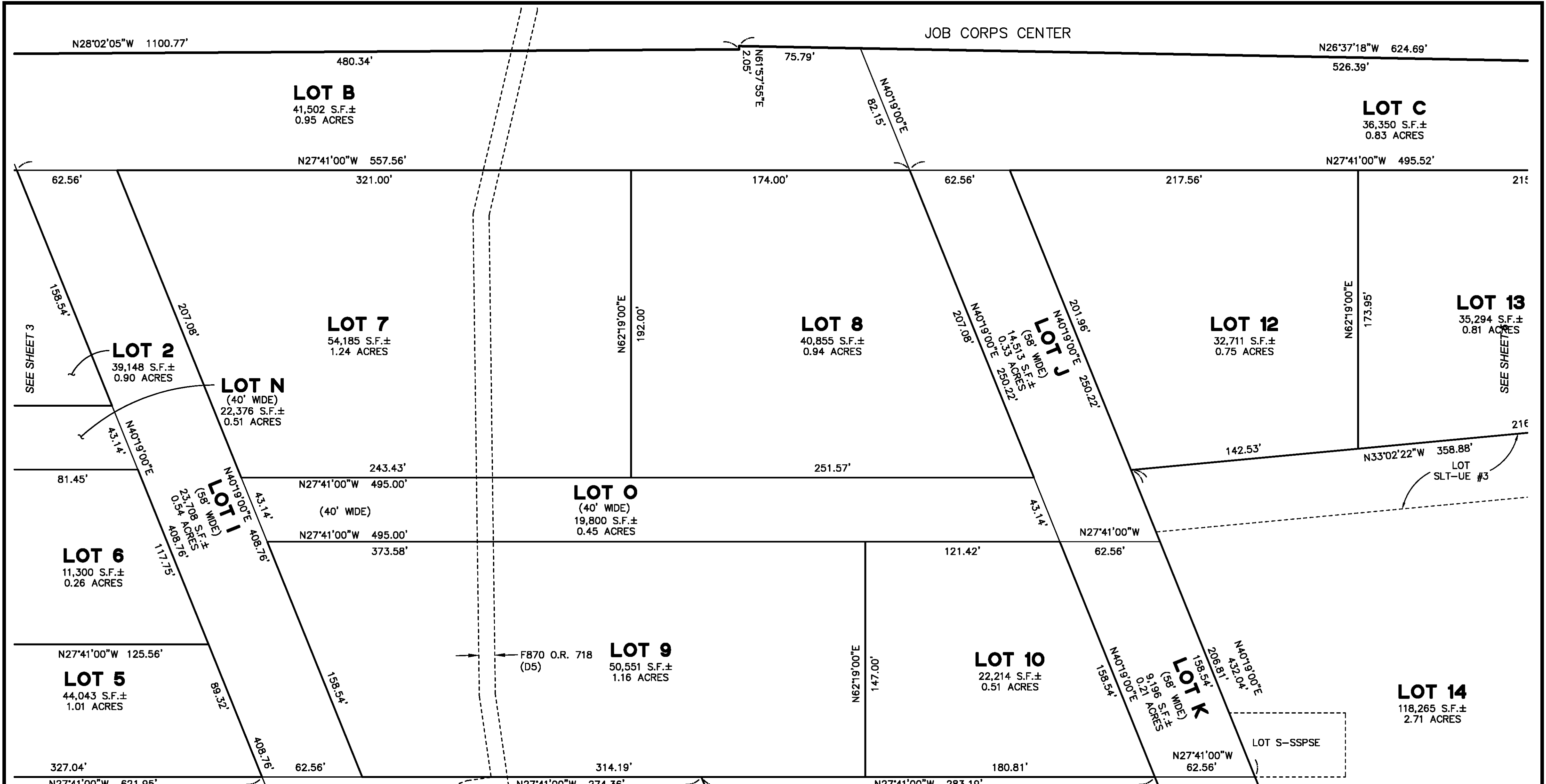
MONUMENT TO MONUMENT  
OFFICIAL RECORDS  
RADIAL BEARING  
RECORD OF SURVEY  
SQUARE FEET  
TOTAL  
UTILITY EASEMENT - SEE NOTE ON SHEET 2  
STREET EASEMENT - SEE NOTE ON SHEET 2  
SANITARY SEWER PUMP STATION EASEMENT - SEE NOTE ON SHEET 2  
FOUND MONUMENT  
SUBDIVISION BOUNDARY LINE  
LOT LINE  
EASEMENT LINE  
MONUMENT LINE  
ACCESS PROHIBITED PER ITEM "H", PAGE 3 OF DOCUMENT  
NUMBER 2000-G855531

**FINAL TRANSFER MAP NO. 8674**  
BEING A PORTION OF TREASURE ISLAND AND YERBA BUENA ISLAND

BEING A SUBDIVISION OF PARCELS STT1.3 AND SPT1.5 AND A PORTION OF PARCELS STT1.1, SPT1.1, SPT1.4 AND SPT1.6 AS SAID PARCELS ARE DESCRIBED IN THOSE CERTAIN DEEDS RECORDED AS DOCUMENT NOS. \_\_\_\_\_ AND \_\_\_\_\_ ON \_\_\_\_\_ 2015 IN THE OFFICE OF THE RECORDER OF CITY AND COUNTY OF SAN FRANCISCO AND A PORTION OF PARCEL N1.3 AS DESCRIBED IN THE DEED RECORDED AS DOCUMENT NO. 2015-K068759 ON MAY 29, 2015 AND SHOWN ON THAT CERTAIN RECORD OF SURVEY MAP 8630 FILED FOR RECORD IN THE OFFICE OF THE RECORDER OF THE CITY AND COUNTY OF SAN FRANCISCO, IN BOOK FF OF SURVEY MAPS AT PAGES 62 THROUGH 78 ON MAY 29, 2015 CITY AND COUNTY OF SAN FRANCISCO CALIFORNIA

NOVEMBER 2015  
**PACIFIC LAND SURVEYS**  
OAKLAND, CALIFORNIA  
SHEET 3 OF 16 SHEETS

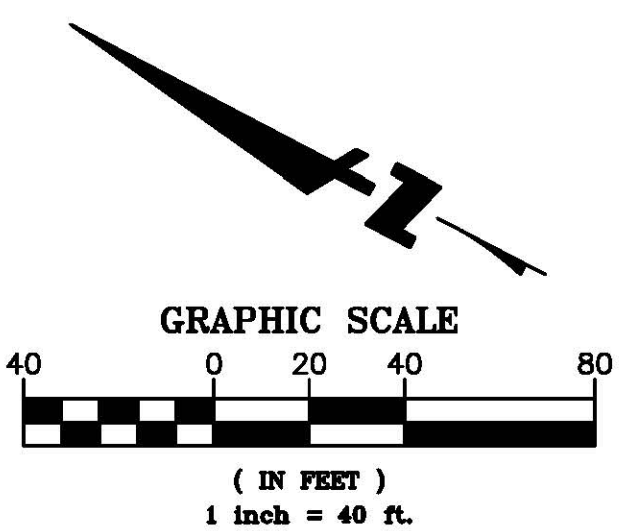
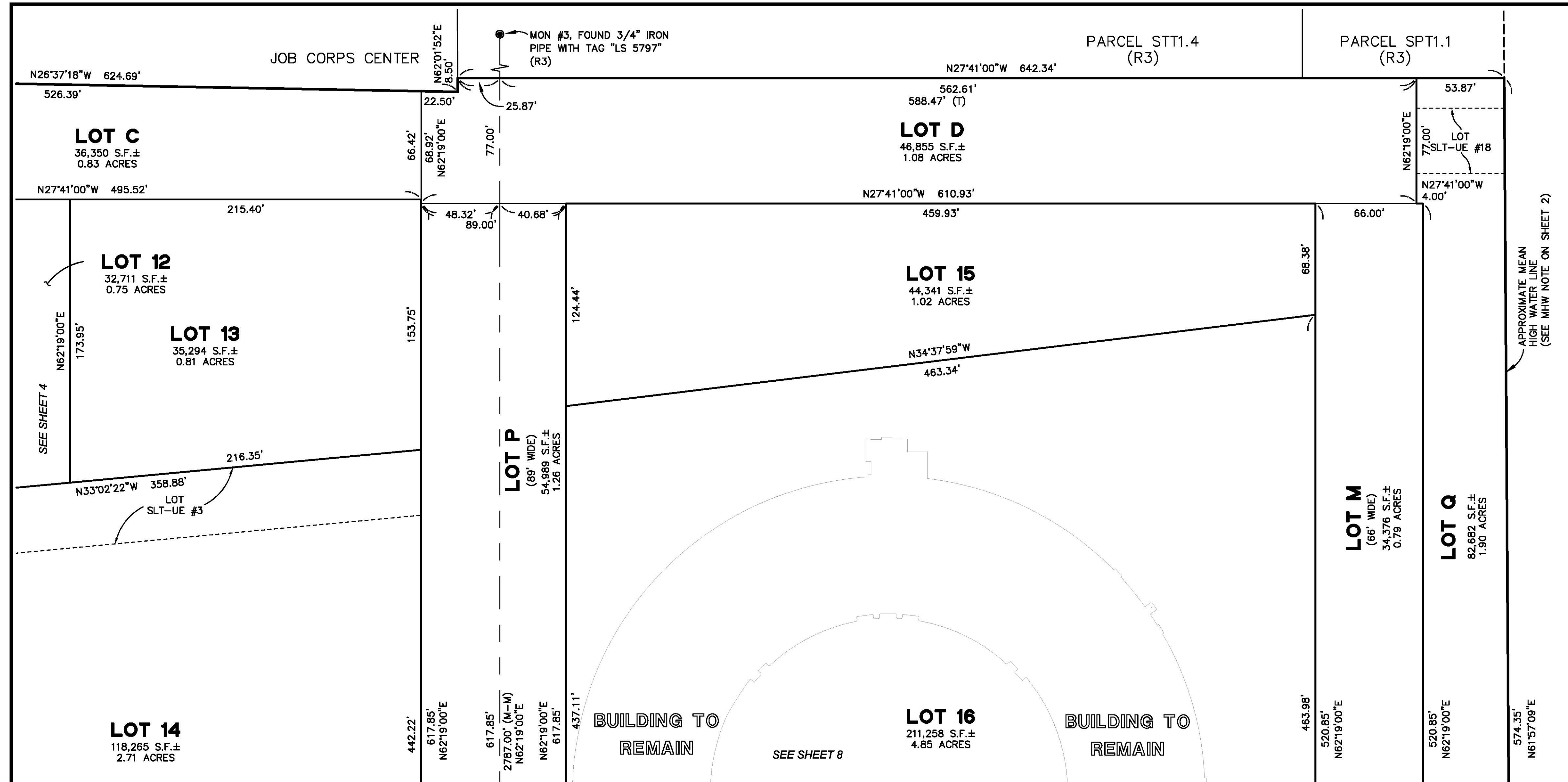
AB 1939, LOTS 001 & 002, TREASURE ISLAND/YERBA BUENA ISLAND



**FINAL TRANSFER MAP NO. 8674**  
BEING A PORTION OF TREASURE ISLAND AND YERBA BUENA ISLAND

BEING A SUBDIVISION OF PARCELS STT1.3 AND SPT1.5 AND A PORTION OF PARCELS STT1.1, SPT1.1, SPT1.4 AND SPT1.6 AS SAID PARCELS ARE DESCRIBED IN THOSE CERTAIN DEEDS RECORDED AS DOCUMENT NOS. \_\_\_\_\_ AND \_\_\_\_\_ ON \_\_\_\_\_ 2015 IN THE OFFICE OF THE RECORDER OF CITY AND COUNTY OF SAN FRANCISCO AND A PORTION OF PARCEL N1.3 AS DESCRIBED IN THE DEED RECORDED AS DOCUMENT NO. 2015-K068759 ON MAY 29, 2015 AND SHOWN ON THAT CERTAIN RECORD OF SURVEY MAP 8630 FILED FOR RECORD IN THE OFFICE OF THE RECORDER OF THE CITY AND COUNTY OF SAN FRANCISCO, IN BOOK FF OF SURVEY MAPS AT PAGES 62 THROUGH 78 ON MAY 29, 2015 CITY AND COUNTY OF SAN FRANCISCO CALIFORNIA

NOVEMBER 2015  
**PACIFIC LAND SURVEYS**  
OAKLAND, CALIFORNIA



**LEGEND**

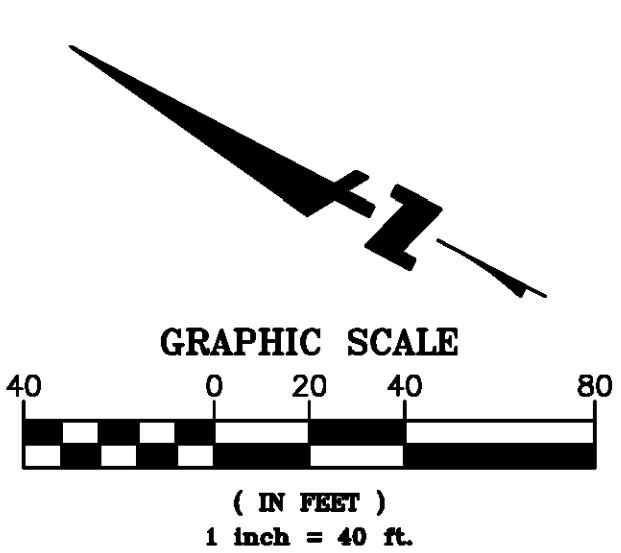
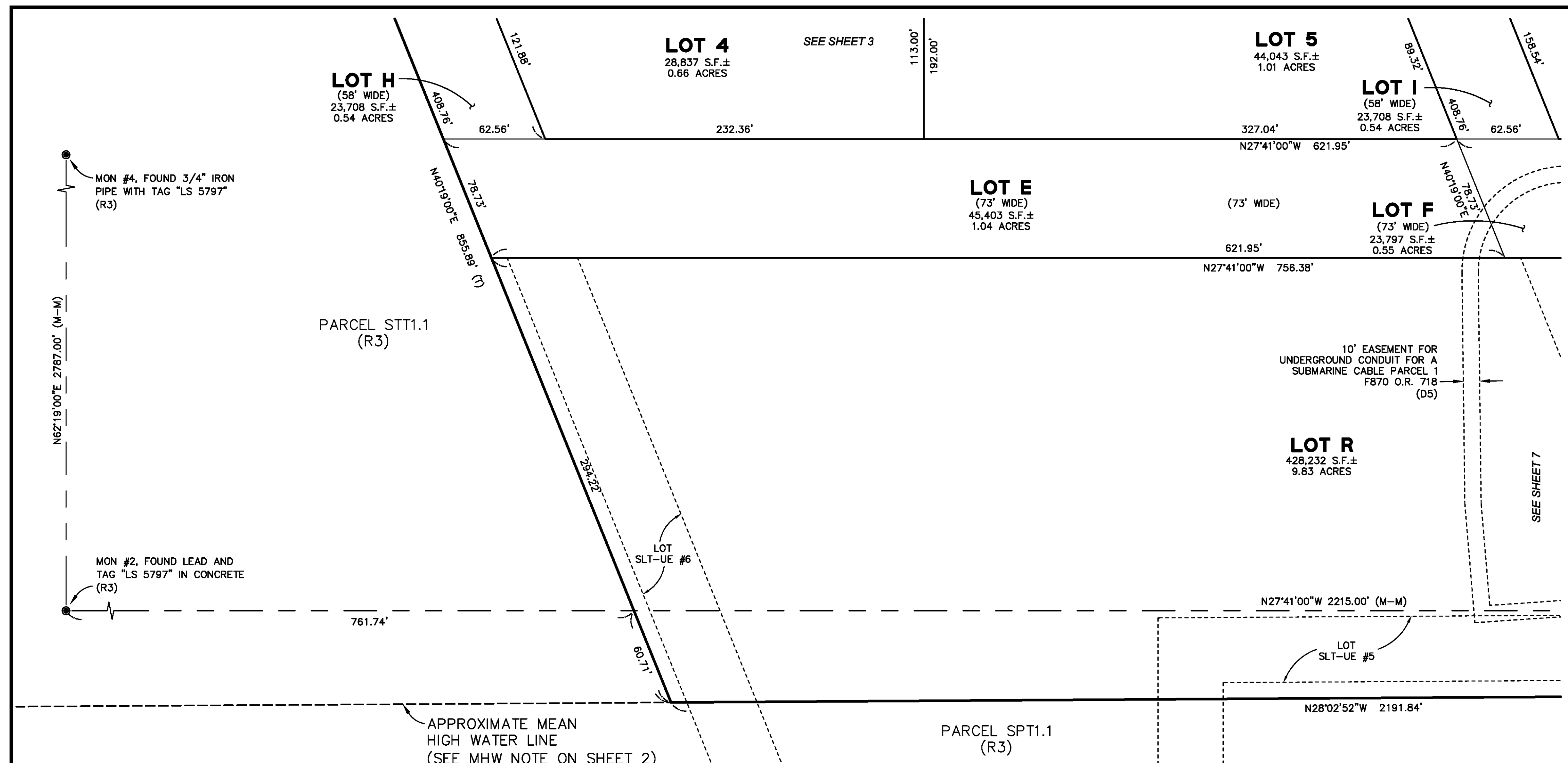
(M-M) MONUMENT TO MONUMENT  
 O.R. OFFICIAL RECORDS  
 (R) RADIAL BEARING  
 ROS RECORD OF SURVEY  
 S.F. SQUARE FEET  
 (T) TOTAL  
 LOT SLT-UE #XX UTILITY EASEMENT - SEE NOTE ON SHEET 2  
 LOT ST-XX STREET EASEMENT - SEE NOTE ON SHEET 2  
 LOT XX - SSPSE SANITARY SEWER PUMP STATION EASEMENT - SEE NOTE ON SHEET 2

● FOUND MONUMENT  
 --- SUBDIVISION BOUNDARY LINE  
 --- LOT LINE  
 --- EASEMENT LINE  
 --- MONUMENT LINE  
 ACCESS PROHIBITED PER ITEM "H", PAGE 3 OF DOCUMENT NUMBER 2000-G855531

**FINAL TRANSFER MAP NO. 8674**  
 BEING A PORTION OF TREASURE ISLAND AND YERBA BUENA ISLAND

BEING A SUBDIVISION OF PARCELS STT1.3 AND SPT1.5 AND A PORTION OF PARCELS STT1.1, SPT1.1, SPT1.4 AND SPT1.6 AS SAID PARCELS ARE DESCRIBED IN THOSE CERTAIN DEEDS RECORDED AS DOCUMENT NOS. \_\_\_\_\_ AND \_\_\_\_\_ ON \_\_\_\_\_ 2015 IN THE OFFICE OF THE RECORDER OF CITY AND COUNTY OF SAN FRANCISCO AND A PORTION OF PARCEL N1.3 AS DESCRIBED IN THE DEED RECORDED AS DOCUMENT NO. 2015-K068759 ON MAY 29, 2015 AND SHOWN ON THAT CERTAIN RECORD OF SURVEY MAP 8630 FILED FOR RECORD IN THE OFFICE OF THE RECORDER OF THE CITY AND COUNTY OF SAN FRANCISCO, IN BOOK FF OF SURVEY MAPS AT PAGES 62 THROUGH 78 ON MAY 29, 2015 CITY AND COUNTY OF SAN FRANCISCO CALIFORNIA

NOVEMBER 2015  
**PACIFIC LAND SURVEYS**  
 OAKLAND, CALIFORNIA

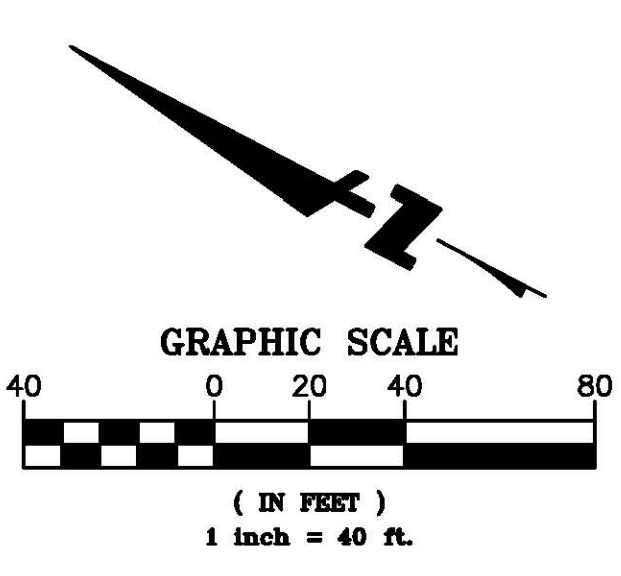
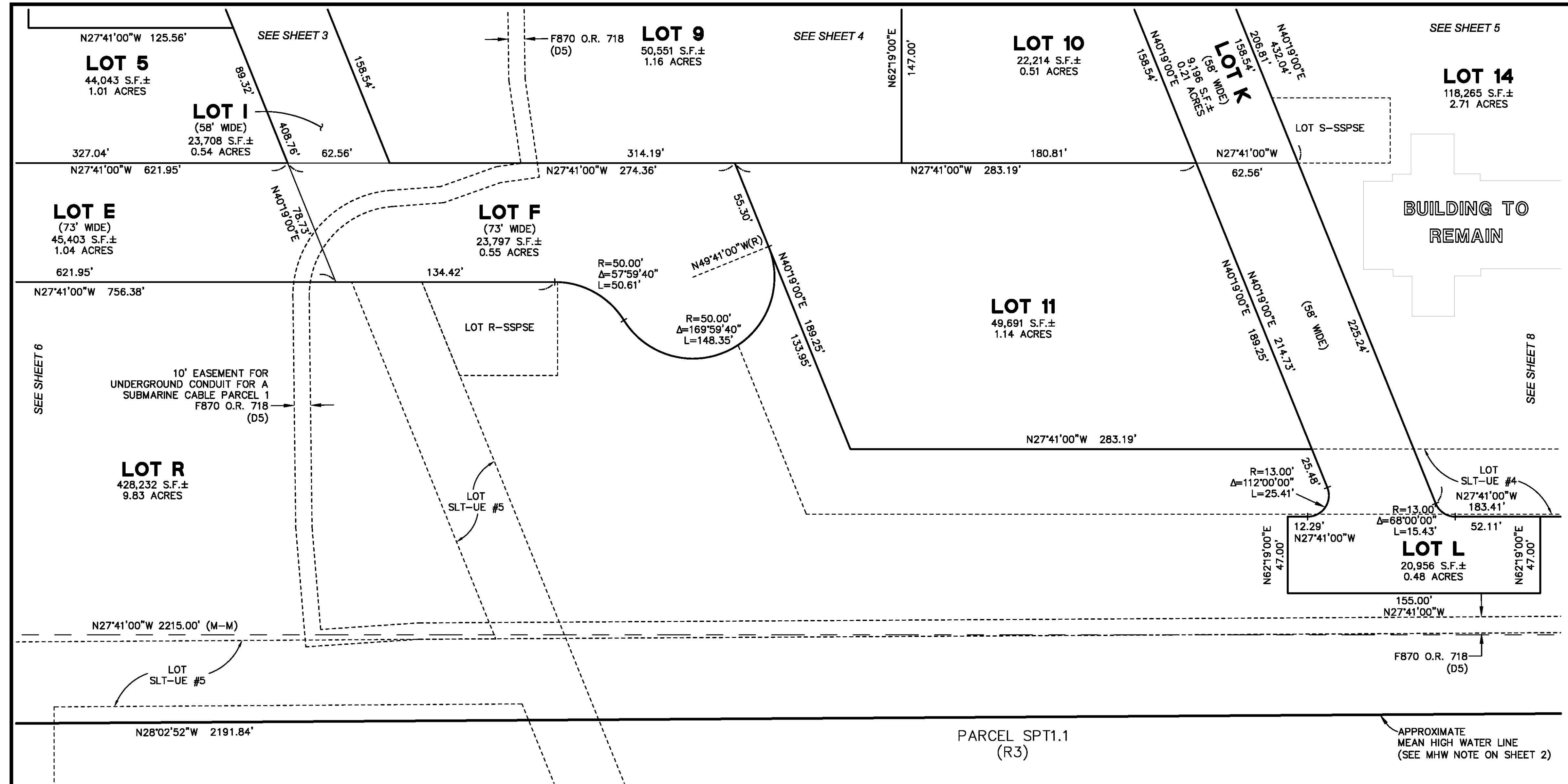


- LEGEND**
- (M-M) MONUMENT TO MONUMENT
  - O.R. OFFICIAL RECORDS
  - (R) RADIAL BEARING
  - ROS RECORD OF SURVEY
  - S.F. SQUARE FEET
  - (T) TOTAL
  - LOT SLT-UE #XX UTILITY EASEMENT - SEE NOTE ON SHEET 2
  - LOT ST-XX STREET EASEMENT - SEE NOTE ON SHEET 2
  - LOT XX - SSPSE SANITARY SEWER PUMP STATION EASEMENT - SEE NOTE ON SHEET 2
  - FOUND MONUMENT
  - SUBDIVISION BOUNDARY LINE
  - LOT LINE
  - EASEMENT LINE
  - MONUMENT LINE
  - ACCESS PROHIBITED PER ITEM "H", PAGE 3 OF DOCUMENT NUMBER 2000-G855531

**FINAL TRANSFER MAP NO. 8674**  
BEING A PORTION OF TREASURE ISLAND AND YERBA BUENA ISLAND

BEING A SUBDIVISION OF PARCELS STT1.3 AND SPT1.5 AND A PORTION OF PARCELS STT1.1, SPT1.1, SPT1.4 AND SPT1.6 AS SAID PARCELS ARE DESCRIBED IN THOSE CERTAIN DEEDS RECORDED AS DOCUMENT NOS. \_\_\_\_\_ AND \_\_\_\_\_ ON \_\_\_\_\_ 2015 IN THE OFFICE OF THE RECORDER OF CITY AND COUNTY OF SAN FRANCISCO AND A PORTION OF PARCEL N1.3 AS DESCRIBED IN THE DEED RECORDED AS DOCUMENT NO. 2015-K068759 ON MAY 29, 2015 AND SHOWN ON THAT CERTAIN RECORD OF SURVEY MAP 8630 FILED FOR RECORD IN THE OFFICE OF THE RECORDER OF THE CITY AND COUNTY OF SAN FRANCISCO, IN BOOK FF OF SURVEY MAPS AT PAGES 62 THROUGH 78 ON MAY 29, 2015 CITY AND COUNTY OF SAN FRANCISCO CALIFORNIA

NOVEMBER 2015  
**PACIFIC LAND SURVEYS**  
OAKLAND, CALIFORNIA



**LEGEND**

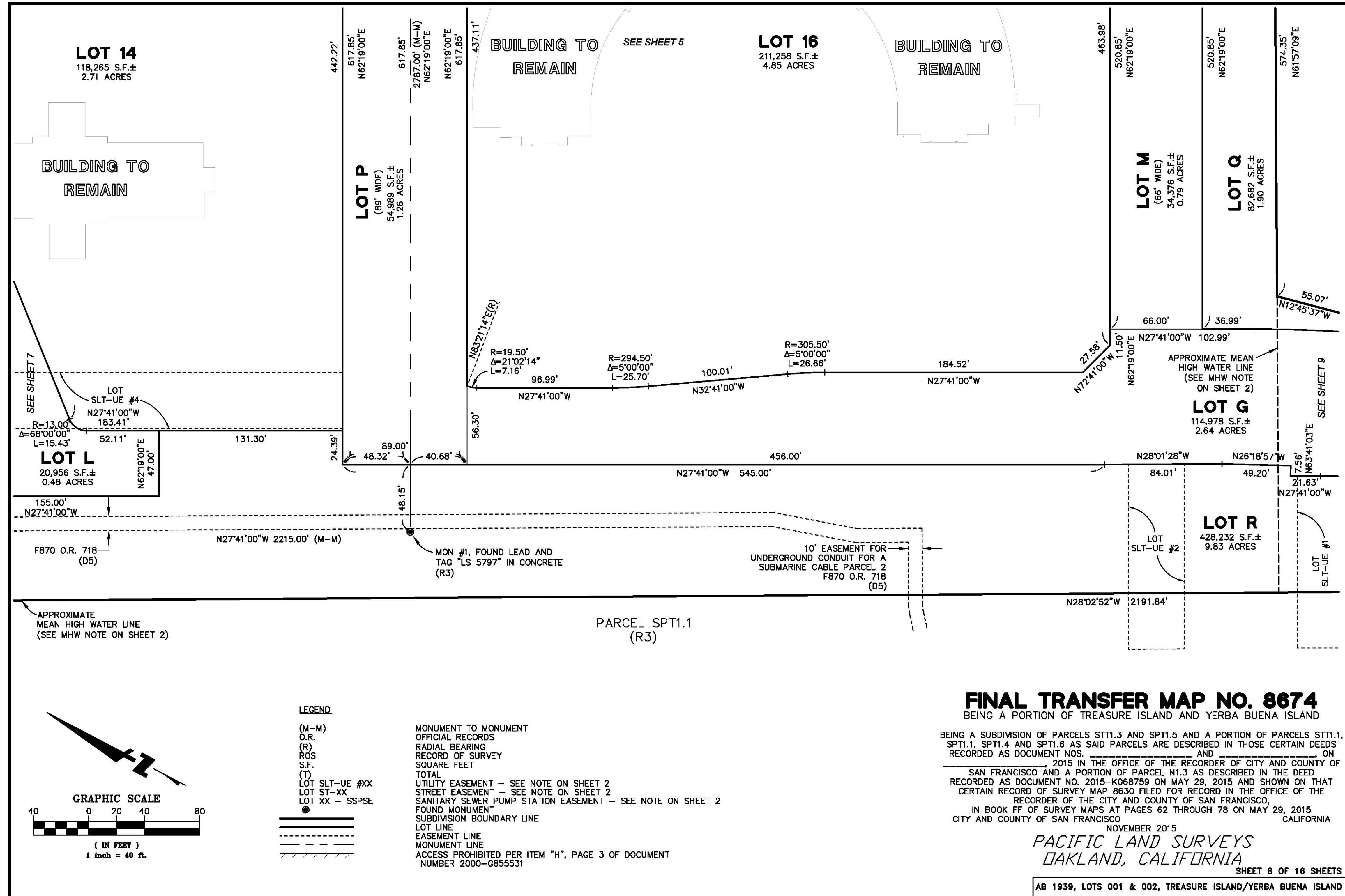
(M-M) MONUMENT TO MONUMENT  
 O.R. OFFICIAL RECORDS  
 (R) RADIAL BEARING  
 ROS RECORD OF SURVEY  
 S.F. SQUARE FEET  
 (T) TOTAL  
 LOT SLT-UE #XX UTILITY EASEMENT - SEE NOTE ON SHEET 2  
 LOT ST-XX STREET EASEMENT - SEE NOTE ON SHEET 2  
 LOT XX - SSPSE SANITARY SEWER PUMP STATION EASEMENT - SEE NOTE ON SHEET 2

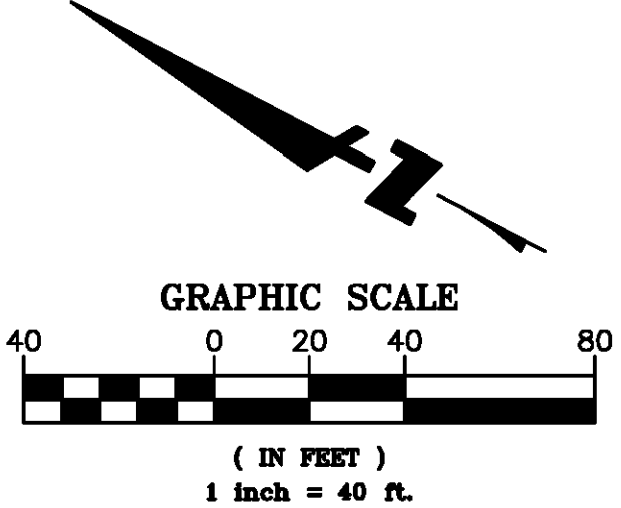
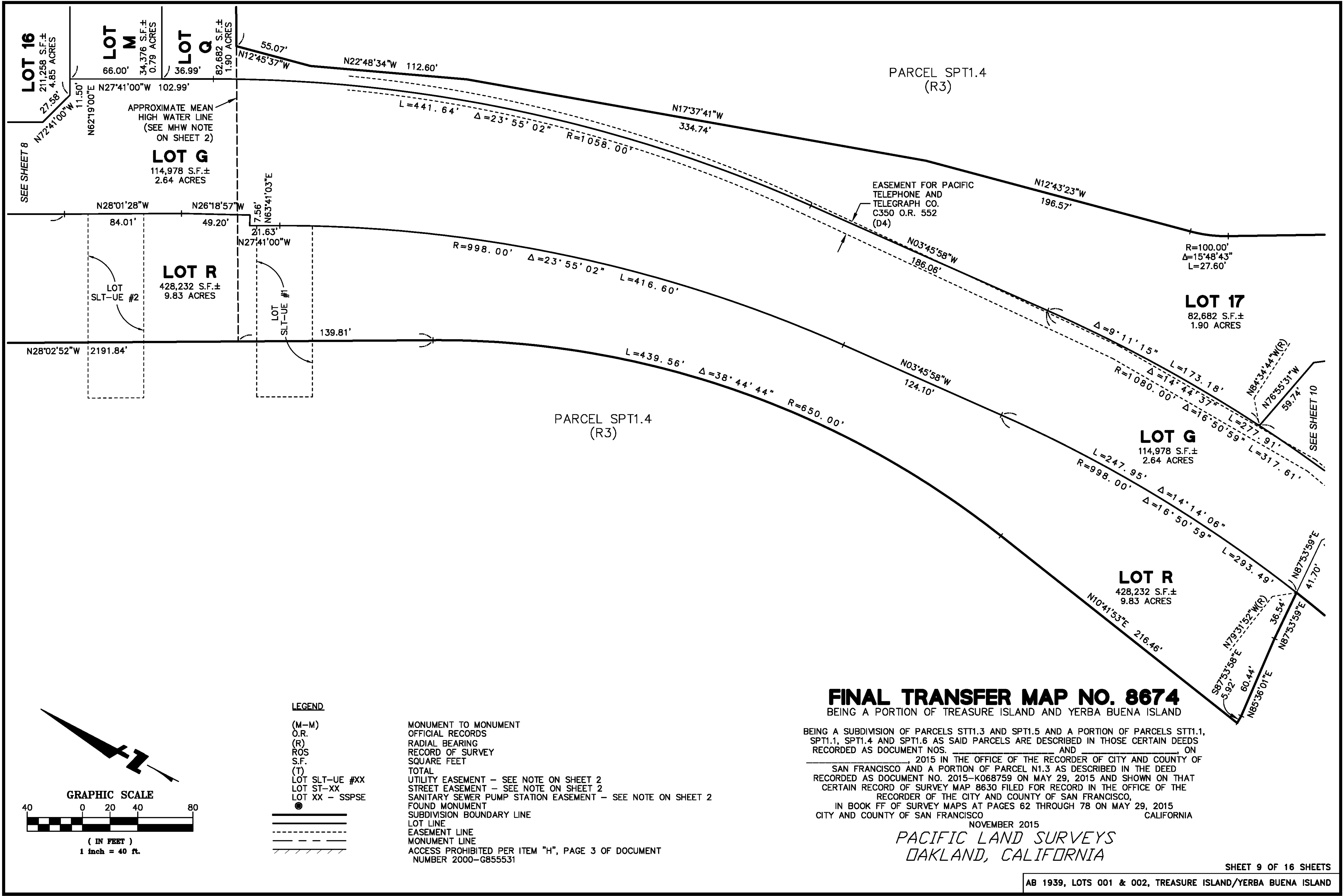
● FOUND MONUMENT  
 — SUBDIVISION BOUNDARY LINE  
 — LOT LINE  
 - - - EASEMENT LINE  
 — MONUMENT LINE  
 // ACCESS PROHIBITED PER ITEM "H", PAGE 3 OF DOCUMENT NUMBER 2000-G855531

**FINAL TRANSFER MAP NO. 8674**  
 BEING A PORTION OF TREASURE ISLAND AND YERBA BUENA ISLAND

BEING A SUBDIVISION OF PARCELS ST11.3 AND SPT1.5 AND A PORTION OF PARCELS ST11.1, SPT1.1, SPT1.4 AND SPT1.8 AS SAID PARCELS ARE DESCRIBED IN THOSE CERTAIN DEEDS RECORDED AS DOCUMENT NOS. \_\_\_\_\_ AND \_\_\_\_\_ ON \_\_\_\_\_ 2015 IN THE OFFICE OF THE RECORDER OF CITY AND COUNTY OF SAN FRANCISCO AND A PORTION OF PARCEL N1.3 AS DESCRIBED IN THE DEED RECORDED AS DOCUMENT NO. 2015-K068759 ON MAY 29, 2015 AND SHOWN ON THAT CERTAIN RECORD OF SURVEY MAP 8630 FILED FOR RECORD IN THE OFFICE OF THE RECORDER OF THE CITY AND COUNTY OF SAN FRANCISCO, IN BOOK FF OF SURVEY MAPS AT PAGES 62 THROUGH 78 ON MAY 29, 2015 CITY AND COUNTY OF SAN FRANCISCO CALIFORNIA

NOVEMBER 2015  
**PACIFIC LAND SURVEYS**  
 OAKLAND, CALIFORNIA





**LEGEND**

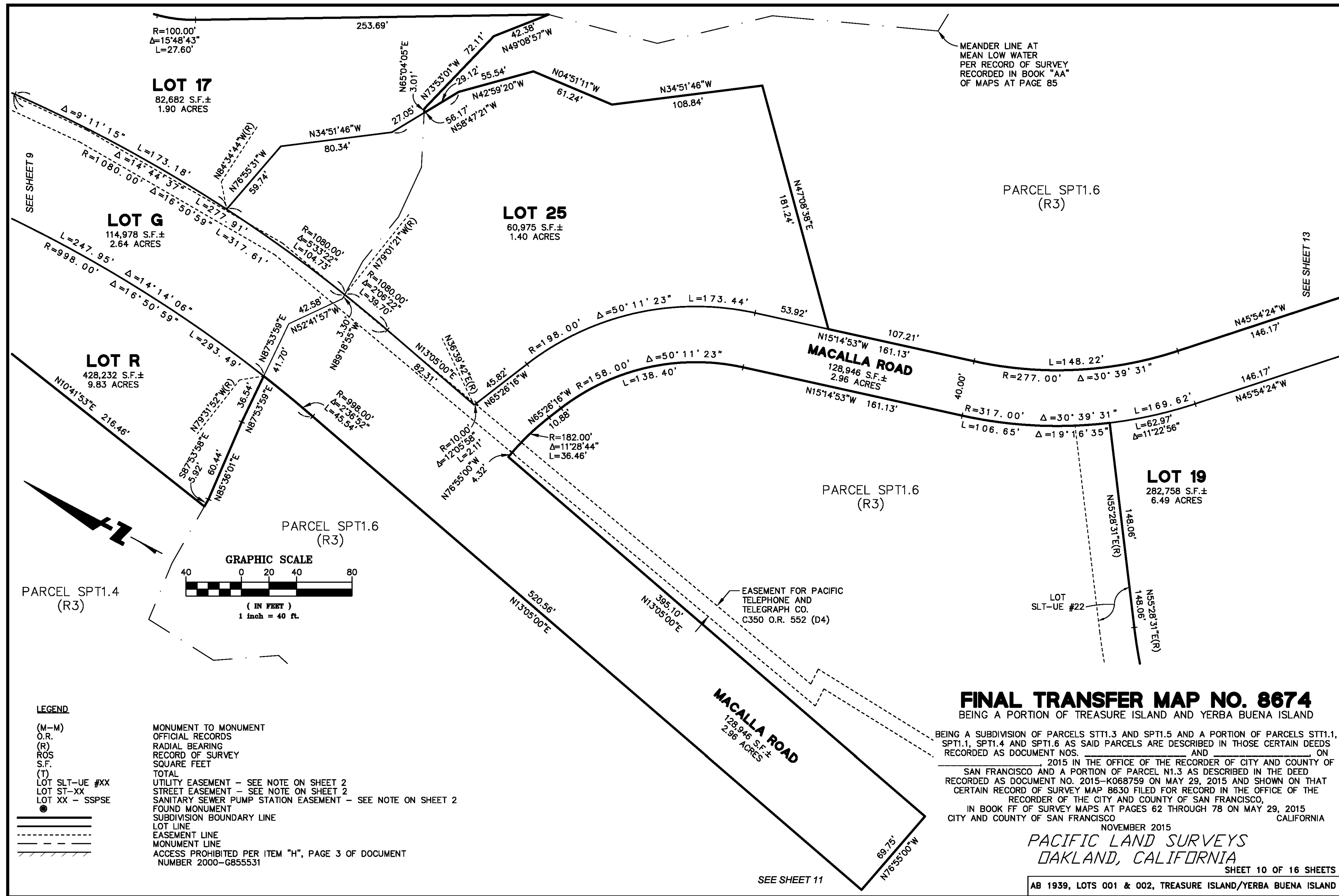
(M-M)	MONUMENT TO MONUMENT
O.R.	OFFICIAL RECORDS
(R)	RADIAL BEARING
ROS	RECORD OF SURVEY
S.F.	SQUARE FEET
(T)	TOTAL
LOT SLT-UE #XX	UTILITY EASEMENT - SEE NOTE ON SHEET 2
LOT ST-XX	STREET EASEMENT - SEE NOTE ON SHEET 2
LOT XX - SSPSE	SANITARY SEWER PUMP STATION EASEMENT - SEE NOTE ON SHEET 2
●	FOUND MONUMENT
---	SUBDIVISION BOUNDARY LINE
---	LOT LINE
---	EASEMENT LINE
---	MONUMENT LINE
---	ACCESS PROHIBITED PER ITEM "H", PAGE 3 OF DOCUMENT
---	NUMBER 2000-G855531

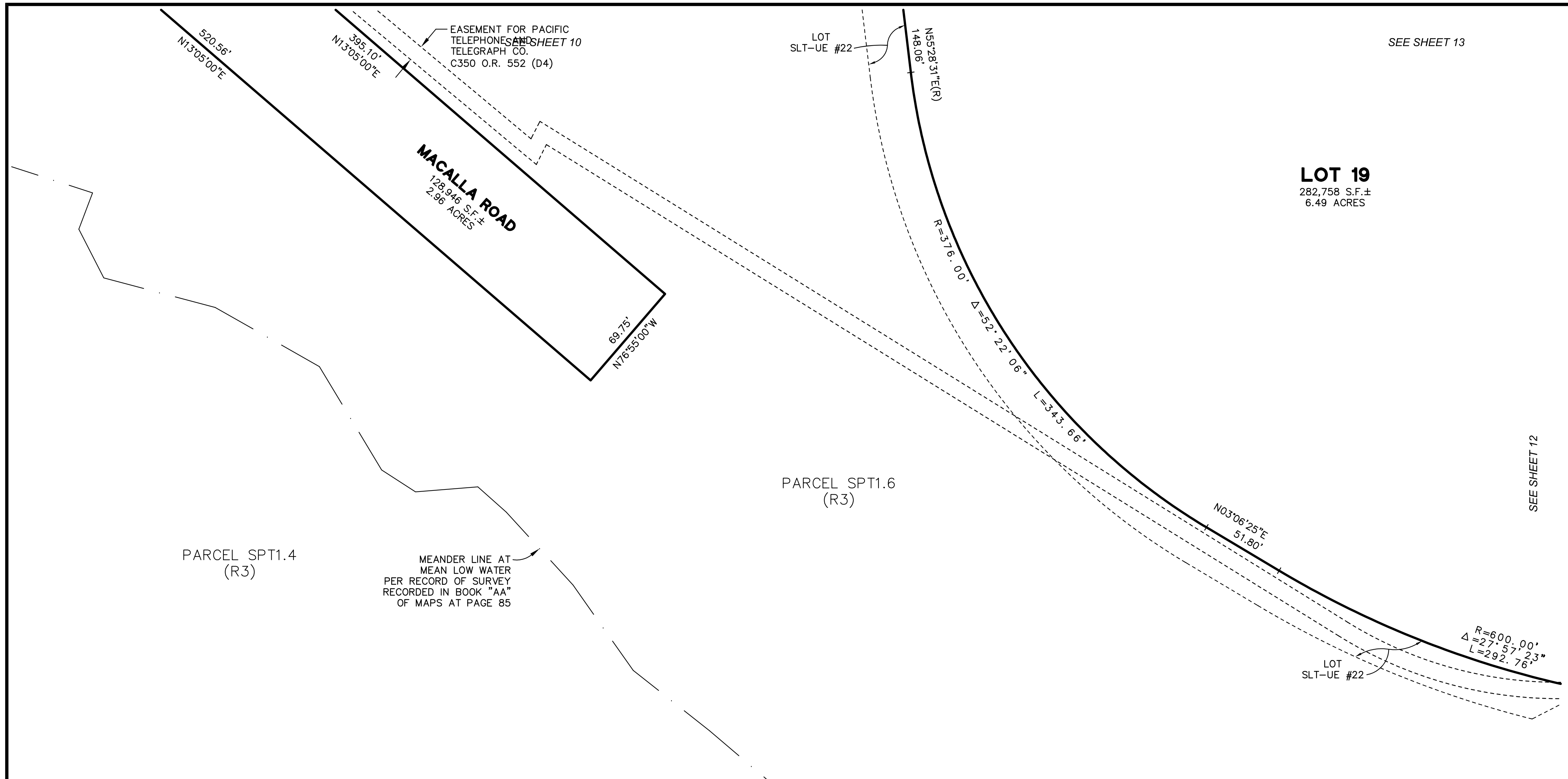
**FINAL TRANSFER MAP NO. 8674**  
BEING A PORTION OF TREASURE ISLAND AND YERBA BUENA ISLAND

BEING A SUBDIVISION OF PARCELS ST11.3 AND SPT1.5 AND A PORTION OF PARCELS ST11.1, SPT1.1, SPT1.4 AND SPT1.5 AS SAID PARCELS ARE DESCRIBED IN THOSE CERTAIN DEEDS RECORDED AS DOCUMENT NOS. \_\_\_\_\_ AND \_\_\_\_\_ ON \_\_\_\_\_ 2015 IN THE OFFICE OF THE RECORDER OF CITY AND COUNTY OF SAN FRANCISCO AND A PORTION OF PARCEL N1.3 AS DESCRIBED IN THE DEED RECORDED AS DOCUMENT NO. 2015-K068759 ON MAY 29, 2015 AND SHOWN ON THAT CERTAIN RECORD OF SURVEY MAP 8630 FILED FOR RECORD IN THE OFFICE OF THE RECORDER OF THE CITY AND COUNTY OF SAN FRANCISCO, IN BOOK FF OF SURVEY MAPS AT PAGES 62 THROUGH 78 ON MAY 29, 2015 CITY AND COUNTY OF SAN FRANCISCO CALIFORNIA

NOVEMBER 2015  
PACIFIC LAND SURVEYS  
OAKLAND, CALIFORNIA







SEE SHEET 13

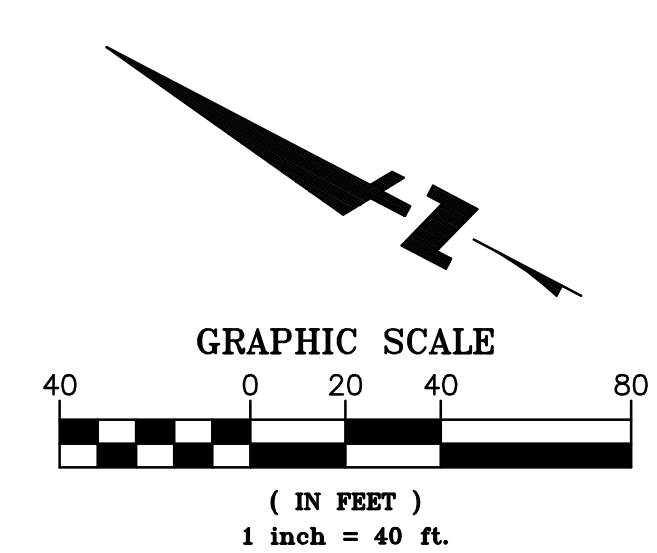
**LOT 19**  
282,758 S.F.±  
6.49 ACRES

SEE SHEET 12

PARCEL SPT1.4  
(R3)

PARCEL SPT1.6  
(R3)

MEANDER LINE AT  
MEAN LOW WATER  
PER RECORD OF SURVEY  
RECORDED IN BOOK "AA"  
OF MAPS AT PAGE 85



**LEGEND**

- |                |   |
|----------------|---|
| (M-M)          | MONUMENT TO MONUMENT  |
| O.R.           | OFFICIAL RECORDS  |
| (R)            | RADIAL BEARING  |
| ROS            | RECORD OF SURVEY  |
| S.F.           | SQUARE FEET   |
| (T)            | TOTAL   |
| LOT SLT-UE #XX | UTILITY EASEMENT - SEE NOTE ON SHEET 2                                    |
| LOT ST-XX      | STREET EASEMENT - SEE NOTE ON SHEET 2                                     |
| LOT XX - SSPSE | SANITARY SEWER PUMP STATION EASEMENT - SEE NOTE ON SHEET 2                |
| ●              | FOUND MONUMENT  |
| =====          | SUBDIVISION BOUNDARY LINE   |
| -----          | LOT LINE  |
| -----          | EASEMENT LINE   |
| -----          | MONUMENT LINE   |
| //////         | ACCESS PROHIBITED PER ITEM "H", PAGE 3 OF DOCUMENT<br>NUMBER 2000-G855531 |

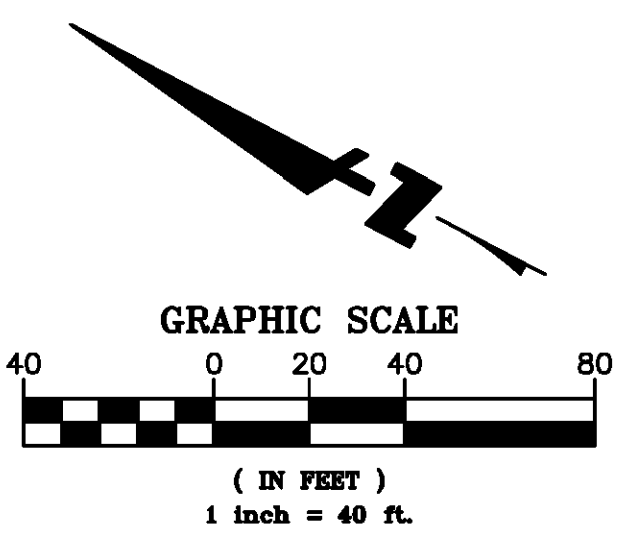
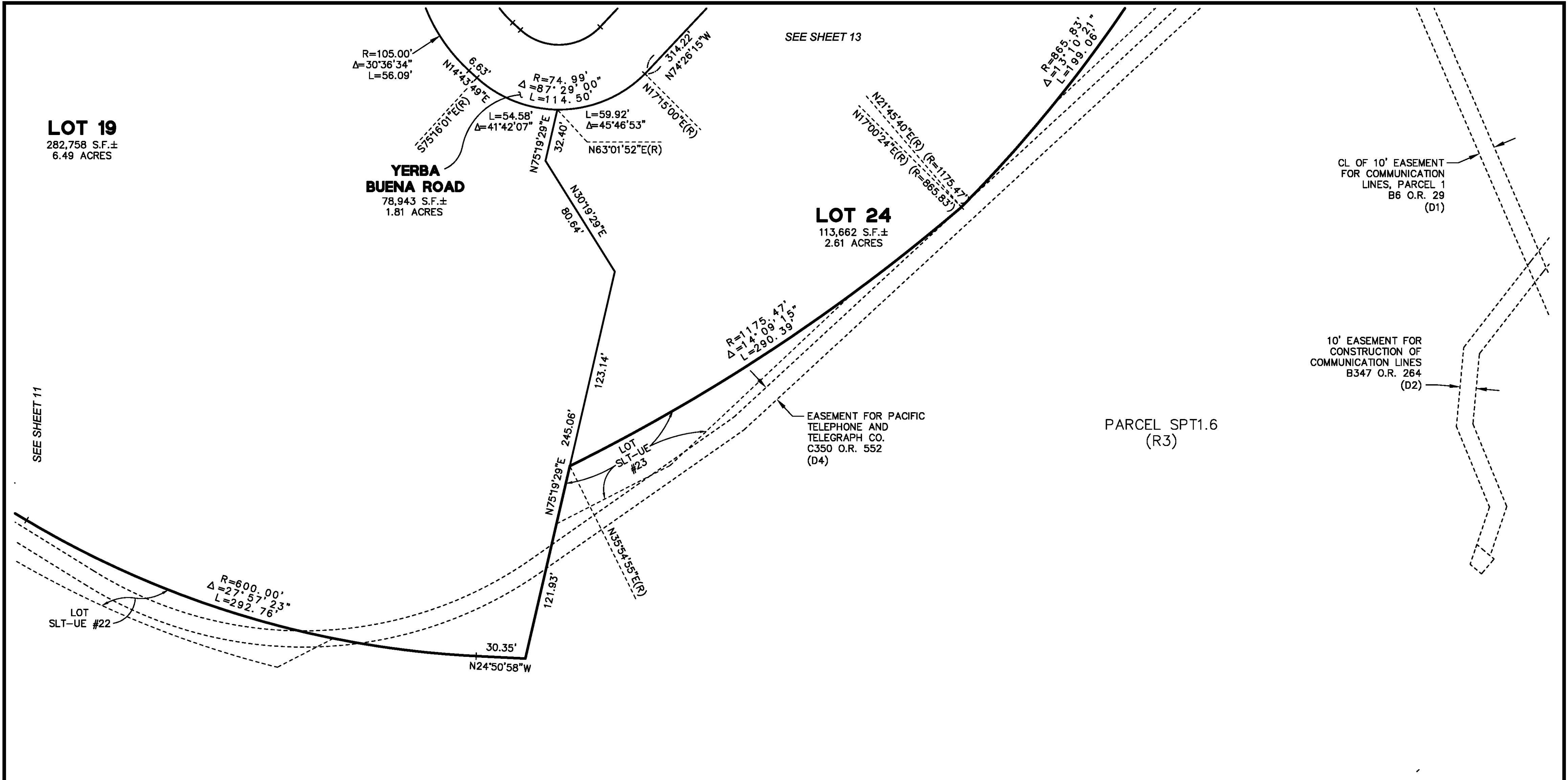
**FINAL TRANSFER MAP NO. 8674**  
BEING A PORTION OF TREASURE ISLAND AND YERBA BUENA ISLAND

BEING A SUBDIVISION OF PARCELS STT1.3 AND SPT1.5 AND A PORTION OF PARCELS STT1.1, SPT1.1, SPT1.4 AND SPT1.6 AS SAID PARCELS ARE DESCRIBED IN THOSE CERTAIN DEEDS RECORDED AS DOCUMENT NOS. \_\_\_\_\_ AND \_\_\_\_\_ ON \_\_\_\_\_, 2015 IN THE OFFICE OF THE RECORDER OF CITY AND COUNTY OF SAN FRANCISCO AND A PORTION OF PARCEL N1.3 AS DESCRIBED IN THE DEED RECORDED AS DOCUMENT NO. 2015-K068759 ON MAY 29, 2015 AND SHOWN ON THAT CERTAIN RECORD OF SURVEY MAP 8630 FILED FOR RECORD IN THE OFFICE OF THE RECORDER OF THE CITY AND COUNTY OF SAN FRANCISCO, IN BOOK FF OF SURVEY MAPS AT PAGES 62 THROUGH 78 ON MAY 29, 2015 CITY AND COUNTY OF SAN FRANCISCO CALIFORNIA

NOVEMBER 2015  
**PACIFIC LAND SURVEYS**  
OAKLAND, CALIFORNIA

SHEET 11 OF 16 SHEETS

AB 1939, LOTS 001 & 002, TREASURE ISLAND/YERBA BUENA ISLAND



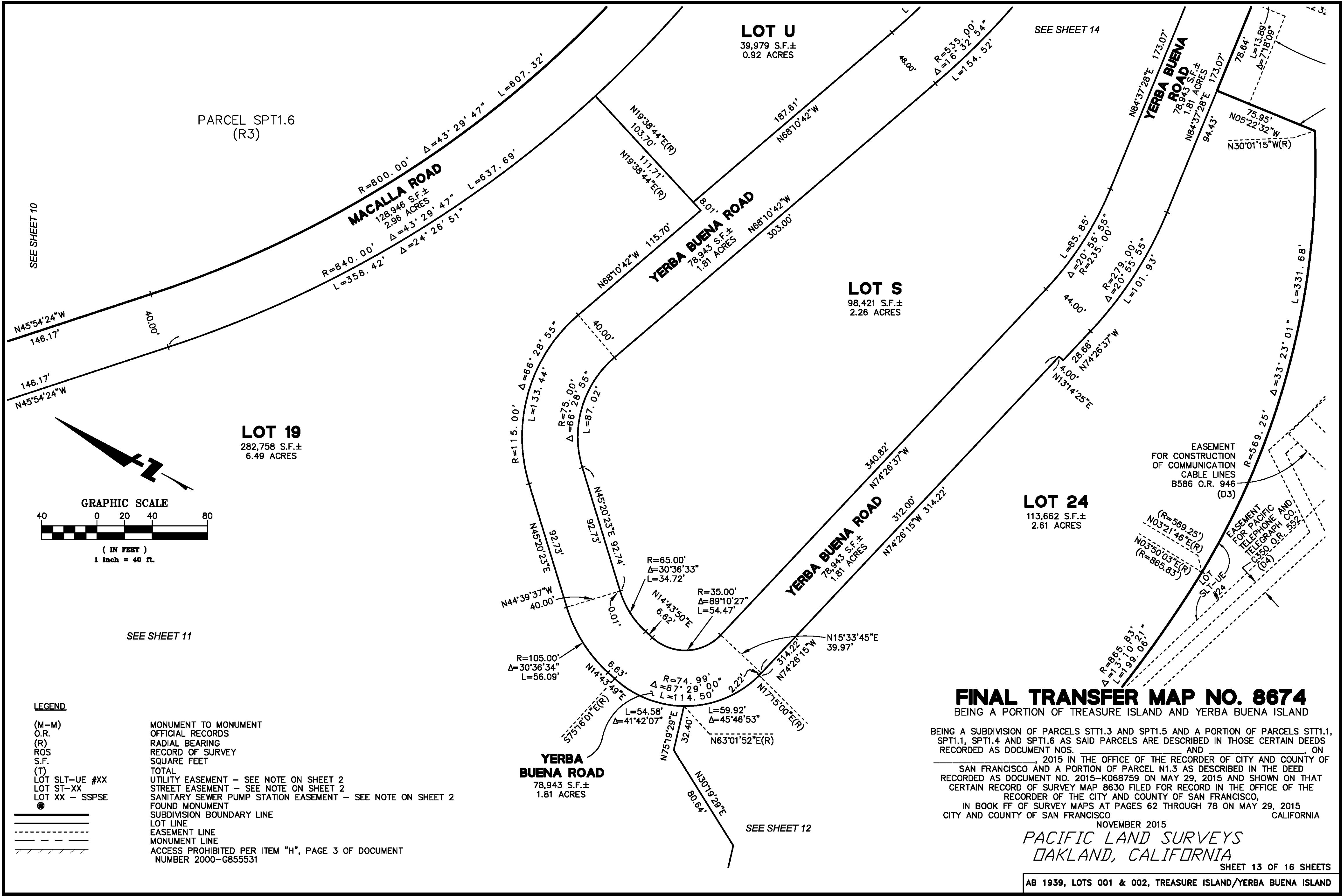
**LEGEND**

(M-M)	MONUMENT TO MONUMENT
O.R.	OFFICIAL RECORDS
(R)	RADIAL BEARING
ROS	RECORD OF SURVEY
S.F.	SQUARE FEET
(T)	TOTAL
LOT SLT-UE #XX	UTILITY EASEMENT - SEE NOTE ON SHEET 2
LOT ST-XX	STREET EASEMENT - SEE NOTE ON SHEET 2
LOT XX - SSPSE	SANITARY SEWER PUMP STATION EASEMENT - SEE NOTE ON SHEET 2
●	FOUND MONUMENT
=====	SUBDIVISION BOUNDARY LINE
-----	LOT LINE
-----	EASEMENT LINE
-----	MONUMENT LINE
-----	ACCESS PROHIBITED PER ITEM "H", PAGE 3 OF DOCUMENT
-----	NUMBER 2000-G855531

**FINAL TRANSFER MAP NO. 8674**  
 BEING A PORTION OF TREASURE ISLAND AND YERBA BUENA ISLAND

BEING A SUBDIVISION OF PARCELS STT1.3 AND SPT1.5 AND A PORTION OF PARCELS STT1.1, SPT1.1, SPT1.4 AND SPT1.6 AS SAID PARCELS ARE DESCRIBED IN THOSE CERTAIN DEEDS RECORDED AS DOCUMENT NOS. \_\_\_\_\_ AND \_\_\_\_\_ ON \_\_\_\_\_ 2015 IN THE OFFICE OF THE RECORDER OF CITY AND COUNTY OF SAN FRANCISCO AND A PORTION OF PARCEL N1.3 AS DESCRIBED IN THE DEED RECORDED AS DOCUMENT NO. 2015-K068759 ON MAY 29, 2015 AND SHOWN ON THAT CERTAIN RECORD OF SURVEY MAP 8630 FILED FOR RECORD IN THE OFFICE OF THE RECORDER OF THE CITY AND COUNTY OF SAN FRANCISCO, IN BOOK FF OF SURVEY MAPS AT PAGES 62 THROUGH 78 ON MAY 29, 2015 CITY AND COUNTY OF SAN FRANCISCO CALIFORNIA

NOVEMBER 2015  
**PACIFIC LAND SURVEYS**  
 OAKLAND, CALIFORNIA



PARCEL SPT1.6  
(R3)

**LOT U**  
39,979 S.F.±  
0.92 ACRES

**LOT S**  
98,421 S.F.±  
2.26 ACRES

**LOT 19**  
282,758 S.F.±  
6.49 ACRES

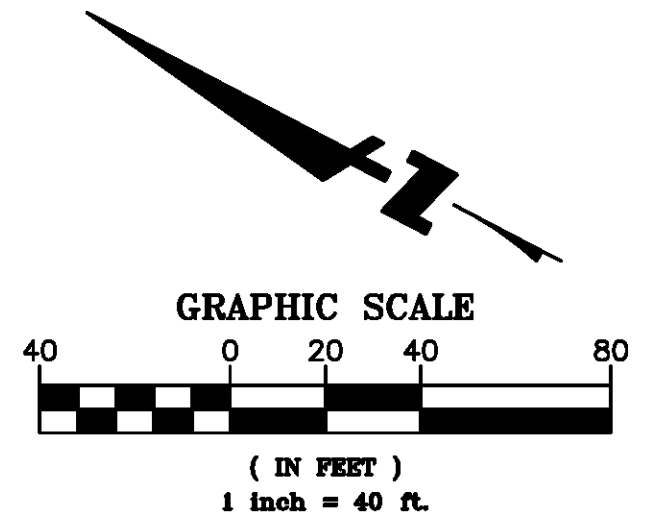
**LOT 24**  
113,662 S.F.±  
2.61 ACRES

SEE SHEET 10

SEE SHEET 14

SEE SHEET 11

SEE SHEET 12



**LEGEND**

- (M-M) MONUMENT TO MONUMENT
- O.R. OFFICIAL RECORDS
- (R) RADIAL BEARING
- ROS RECORD OF SURVEY
- S.F. SQUARE FEET
- (T) TOTAL
- LOT SLT-UE #XX UTILITY EASEMENT - SEE NOTE ON SHEET 2
- LOT ST-XX STREET EASEMENT - SEE NOTE ON SHEET 2
- LOT XX - SSPSE SANITARY SEWER PUMP STATION EASEMENT - SEE NOTE ON SHEET 2
- FOUND MONUMENT
- SUBDIVISION BOUNDARY LINE
- LOT LINE
- EASEMENT LINE
- MONUMENT LINE
- ACCESS PROHIBITED PER ITEM "H", PAGE 3 OF DOCUMENT NUMBER 2000-G855531

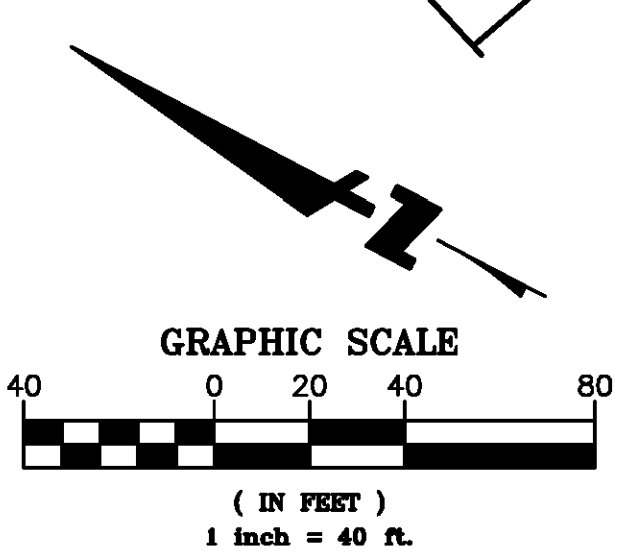
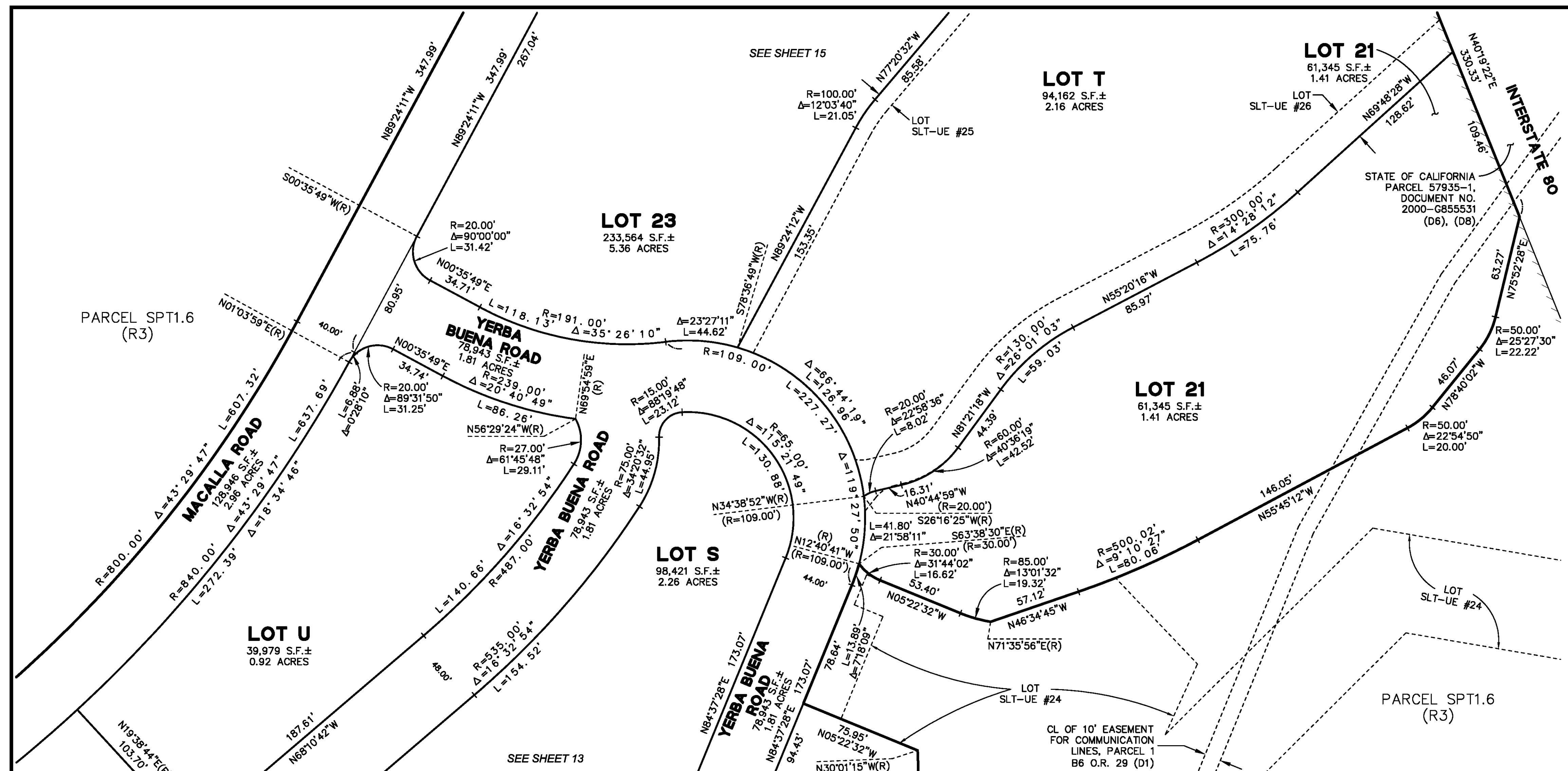
**FINAL TRANSFER MAP NO. 8674**  
BEING A PORTION OF TREASURE ISLAND AND YERBA BUENA ISLAND

BEING A SUBDIVISION OF PARCELS STT1.3 AND SPT1.5 AND A PORTION OF PARCELS STT1.1, SPT1.1, SPT1.4 AND SPT1.6 AS SAID PARCELS ARE DESCRIBED IN THOSE CERTAIN DEEDS RECORDED AS DOCUMENT NOS. \_\_\_\_\_ AND \_\_\_\_\_ ON \_\_\_\_\_ 2015 IN THE OFFICE OF THE RECORDER OF CITY AND COUNTY OF SAN FRANCISCO AND A PORTION OF PARCEL N1.3 AS DESCRIBED IN THE DEED RECORDED AS DOCUMENT NO. 2015-K068759 ON MAY 29, 2015 AND SHOWN ON THAT CERTAIN RECORD OF SURVEY MAP 8630 FILED FOR RECORD IN THE OFFICE OF THE RECORDER OF THE CITY AND COUNTY OF SAN FRANCISCO, IN BOOK FF OF SURVEY MAPS AT PAGES 62 THROUGH 78 ON MAY 29, 2015 CITY AND COUNTY OF SAN FRANCISCO CALIFORNIA

NOVEMBER 2015  
**PACIFIC LAND SURVEYS**  
OAKLAND, CALIFORNIA

SHEET 13 OF 16 SHEETS

AB 1939, LOTS 001 & 002, TREASURE ISLAND/YERBA BUENA ISLAND



**LEGEND**

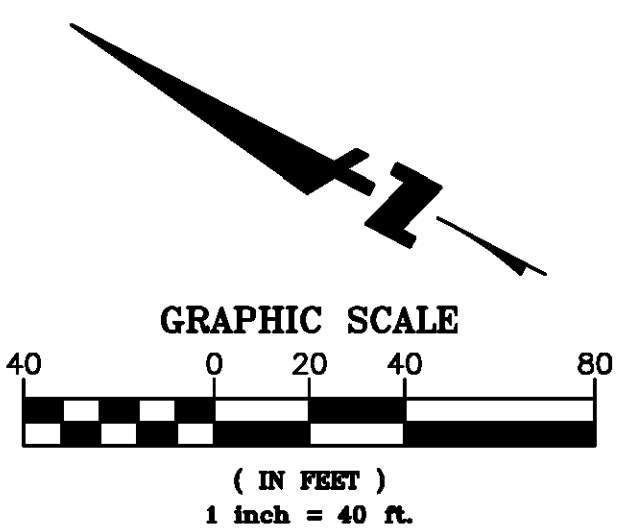
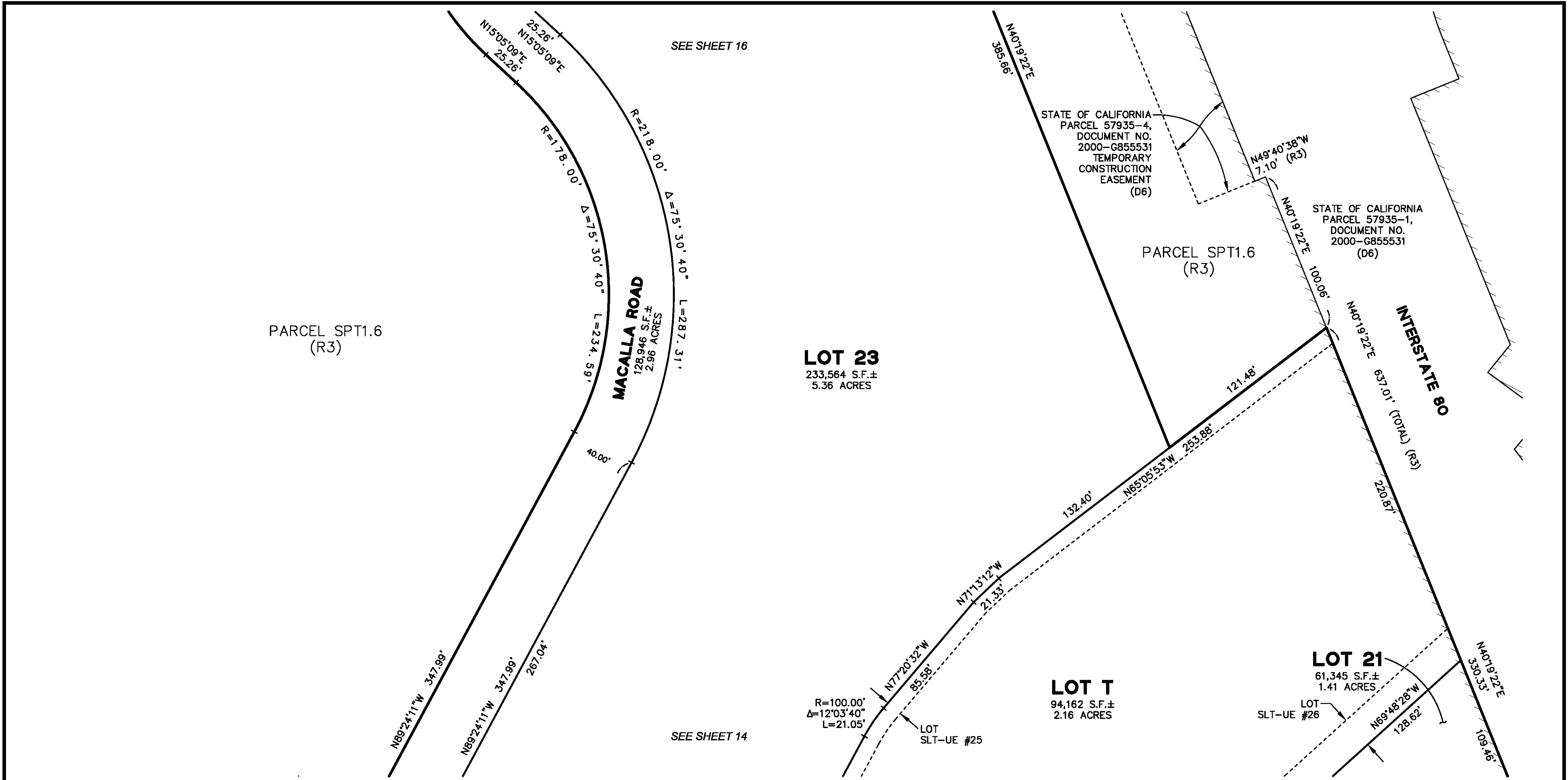
(M-M)	MONUMENT TO MONUMENT
O.R.	OFFICIAL RECORDS
(R)	RADIAL BEARING
ROS	RECORD OF SURVEY
S.F.	SQUARE FEET
(T)	TOTAL
LOT SLT-UE #XX	UTILITY EASEMENT - SEE NOTE ON SHEET 2
LOT ST-XX	STREET EASEMENT - SEE NOTE ON SHEET 2
LOT XX - SSPSE	SANITARY SEWER PUMP STATION EASEMENT - SEE NOTE ON SHEET 2
●	FOUND MONUMENT
---	SUBDIVISION BOUNDARY LINE
---	LOT LINE
---	EASEMENT LINE
---	MONUMENT LINE
---	ACCESS PROHIBITED PER ITEM "H", PAGE 3 OF DOCUMENT
---	NUMBER 2000-G855531

**FINAL TRANSFER MAP NO. 8674**  
 BEING A PORTION OF TREASURE ISLAND AND YERBA BUENA ISLAND

BEING A SUBDIVISION OF PARCELS STT1.3 AND SPT1.5 AND A PORTION OF PARCELS STT1.1, SPT1.1, SPT1.4 AND SPT1.8 AS SAID PARCELS ARE DESCRIBED IN THOSE CERTAIN DEEDS RECORDED AS DOCUMENT NOS. \_\_\_\_\_ AND \_\_\_\_\_ ON \_\_\_\_\_ NOVEMBER 2015 IN THE OFFICE OF THE RECORDER OF CITY AND COUNTY OF SAN FRANCISCO AND A PORTION OF PARCEL N1.3 AS DESCRIBED IN THE DEED RECORDED AS DOCUMENT NO. 2015-K068759 ON MAY 29, 2015 AND SHOWN ON THAT CERTAIN RECORD OF SURVEY MAP 8630 FILED FOR RECORD IN THE OFFICE OF THE RECORDER OF THE CITY AND COUNTY OF SAN FRANCISCO, IN BOOK FF OF SURVEY MAPS AT PAGES 62 THROUGH 78 ON MAY 29, 2015 CITY AND COUNTY OF SAN FRANCISCO CALIFORNIA

NOVEMBER 2015  
**PACIFIC LAND SURVEYS**  
 OAKLAND, CALIFORNIA  
 SHEET 14 OF 16 SHEETS

AB 1939, LOTS 001 & 002, TREASURE ISLAND/YERBA BUENA ISLAND



**LEGEND**

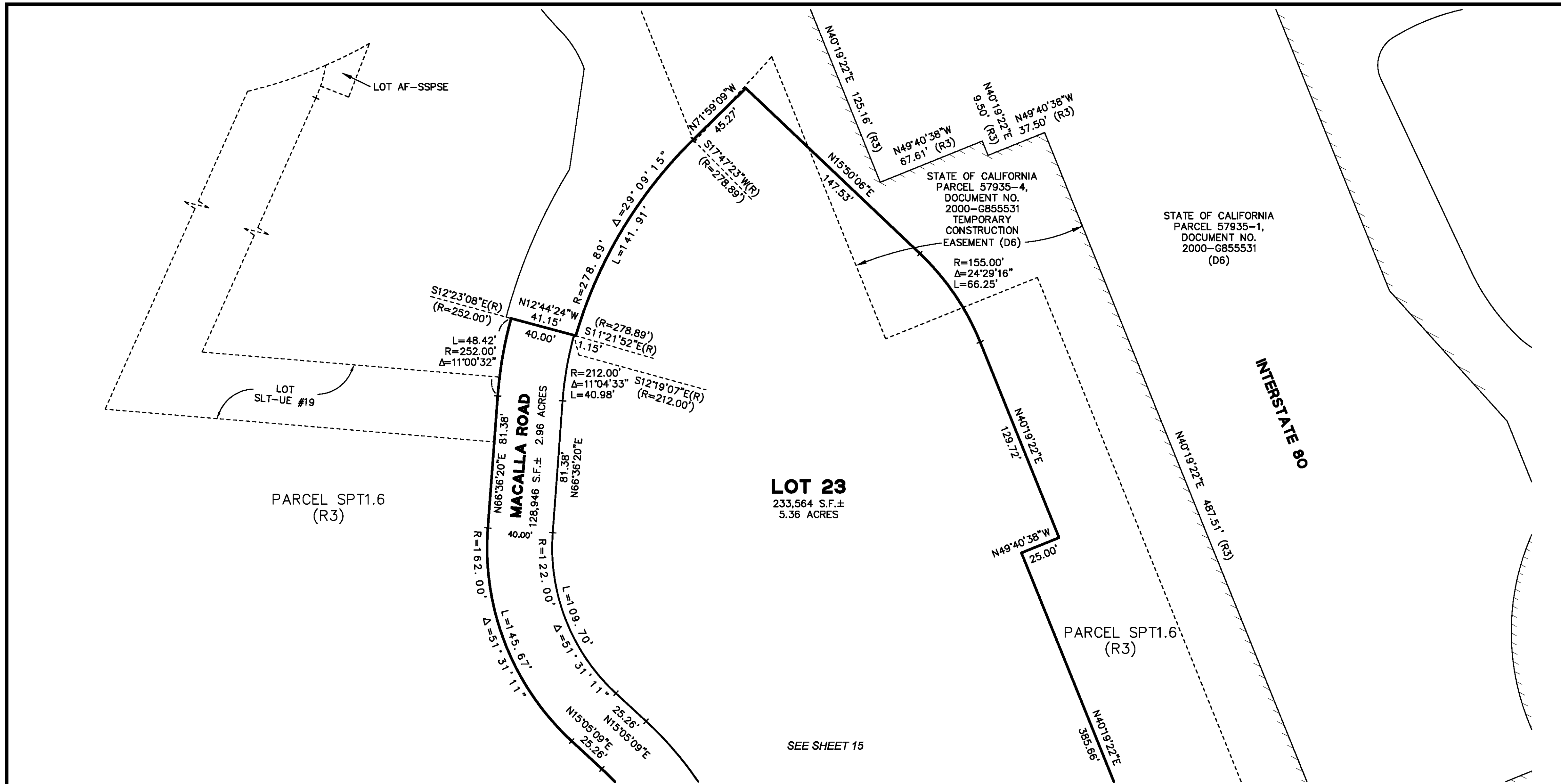
(M-M) MONUMENT TO MONUMENT  
O.R. OFFICIAL RECORDS  
(R) RADIAL BEARING  
ROS RECORD OF SURVEY  
S.F. SQUARE FEET  
(T) TOTAL  
LOT SLT-UE #XX UTILITY EASEMENT - SEE NOTE ON SHEET 2  
LOT ST-XX STREET EASEMENT - SEE NOTE ON SHEET 2  
LOT XX - SSPSE SANITARY SEWER PUMP STATION EASEMENT - SEE NOTE ON SHEET 2

● FOUND MONUMENT  
— SUBDIVISION BOUNDARY LINE  
- - - LOT LINE  
- - - EASEMENT LINE  
- - - MONUMENT LINE  
ACCESS PROHIBITED PER ITEM "H", PAGE 3 OF DOCUMENT NUMBER 2000-0855531

**FINAL TRANSFER MAP NO. 8674**  
BEING A PORTION OF TREASURE ISLAND AND YERBA BUENA ISLAND

BEING A SUBDIVISION OF PARCELS STT1.3 AND SPT1.5 AND A PORTION OF PARCELS STT1.1, SPT1.1, SPT1.4 AND SPT1.6 AS SAID PARCELS ARE DESCRIBED IN THOSE CERTAIN DEEDS RECORDED AS DOCUMENT NOS. \_\_\_\_\_ AND \_\_\_\_\_ ON \_\_\_\_\_ NOVEMBER 2015 IN THE OFFICE OF THE RECORDER OF CITY AND COUNTY OF SAN FRANCISCO AND A PORTION OF PARCEL N1.3 AS DESCRIBED IN THE DEED RECORDED AS DOCUMENT NO. 2015-K068759 ON MAY 29, 2015 AND SHOWN ON THAT CERTAIN RECORD OF SURVEY MAP 8630 FILED FOR RECORD IN THE OFFICE OF THE RECORDER OF THE CITY AND COUNTY OF SAN FRANCISCO, IN BOOK FF OF SURVEY MAPS AT PAGES 62 THROUGH 78 ON MAY 29, 2015 CITY AND COUNTY OF SAN FRANCISCO CALIFORNIA

NOVEMBER 2015  
**PACIFIC LAND SURVEYS**  
OAKLAND, CALIFORNIA  
SHEET 15 OF 16 SHEETS  
AB 1939, LOTS 001 & 002, TREASURE ISLAND/YERBA BUENA ISLAND



**LOT 23**  
233,564 S.F. ±  
5.36 ACRES

PARCEL SPT1.6  
(R3)

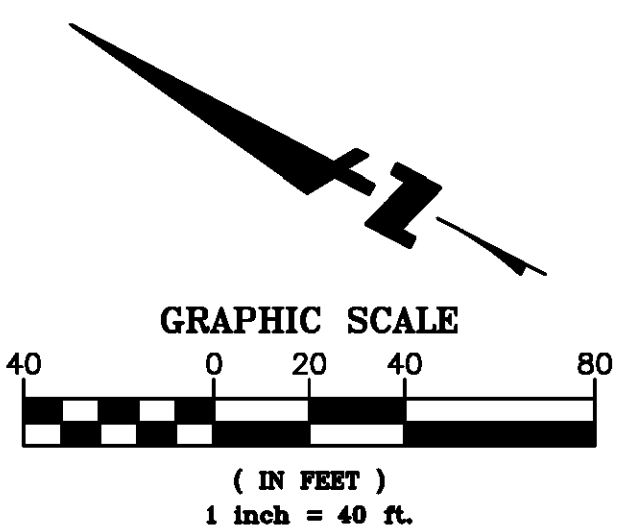
PARCEL SPT1.6  
(R3)

**FINAL TRANSFER MAP NO. 8674**  
BEING A PORTION OF TREASURE ISLAND AND YERBA BUENA ISLAND

BEING A SUBDIVISION OF PARCELS STT1.3 AND SPT1.5 AND A PORTION OF PARCELS STT1.1, SPT1.1, SPT1.4 AND SPT1.8 AS SAID PARCELS ARE DESCRIBED IN THOSE CERTAIN DEEDS RECORDED AS DOCUMENT NOS. \_\_\_\_\_ AND \_\_\_\_\_ ON \_\_\_\_\_ 2015 IN THE OFFICE OF THE RECORDER OF CITY AND COUNTY OF SAN FRANCISCO AND A PORTION OF PARCEL N1.3 AS DESCRIBED IN THE DEED RECORDED AS DOCUMENT NO. 2015-K068759 ON MAY 29, 2015 AND SHOWN ON THAT CERTAIN RECORD OF SURVEY MAP 8630 FILED FOR RECORD IN THE OFFICE OF THE RECORDER OF THE CITY AND COUNTY OF SAN FRANCISCO, IN BOOK FF OF SURVEY MAPS AT PAGES 62 THROUGH 78 ON MAY 29, 2015 CITY AND COUNTY OF SAN FRANCISCO CALIFORNIA

NOVEMBER 2015  
**PACIFIC LAND SURVEYS**  
OAKLAND, CALIFORNIA

SHEET 16 OF 16 SHEETS  
AB 1939, LOTS 001 & 002, TREASURE ISLAND/YERBA BUENA ISLAND



- LEGEND**
- (M-M) MONUMENT TO MONUMENT
  - O.R. OFFICIAL RECORDS
  - (R) RADIAL BEARING
  - ROS RECORD OF SURVEY
  - S.F. SQUARE FEET
  - (T) TOTAL
  - LOT SLT-UE #XX UTILITY EASEMENT - SEE NOTE ON SHEET 2
  - LOT ST-XX STREET EASEMENT - SEE NOTE ON SHEET 2
  - LOT XX - SSPSE SANITARY SEWER PUMP STATION EASEMENT - SEE NOTE ON SHEET 2
  - FOUND MONUMENT
  - SUBDIVISION BOUNDARY LINE
  - LOT LINE
  - EASEMENT LINE
  - MONUMENT LINE
  - ACCESS PROHIBITED PER ITEM "H", PAGE 3 OF DOCUMENT NUMBER 2000-G855531

SEE SHEET 15