

Received in Committee
5/18/16
for.

SFPUC Biennial Budget Fiscal Years 2017 & 2018

May 18, 2016

Harlan L. Kelly Jr.
General Manager

San Francisco Public Utilities Commission



San Francisco
Water
Power
Sewer

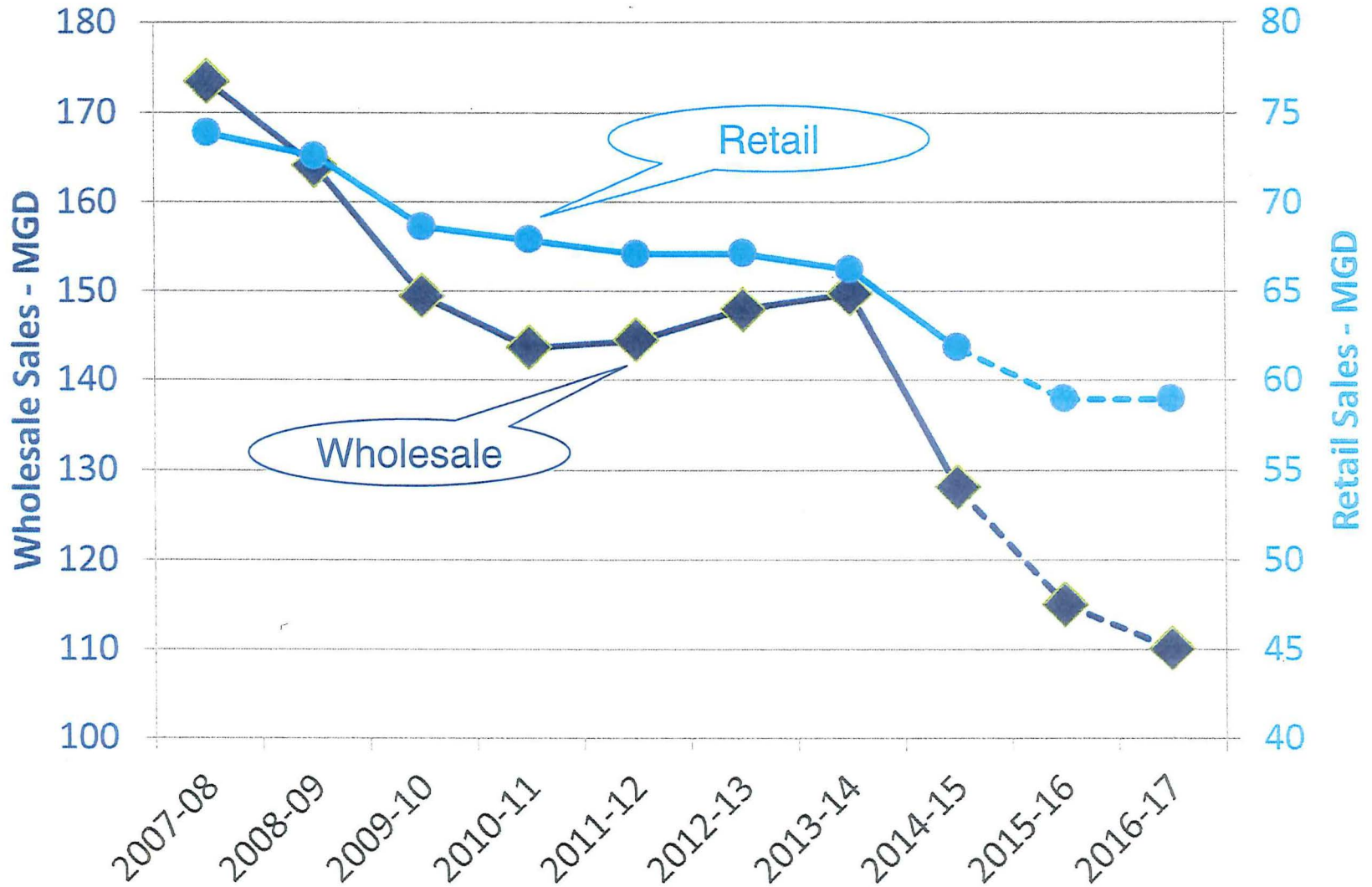


Budget Priorities

- Launch CleanPowerSF
- Implement Power Enterprise business plan
- Implement SSIP and Complete WSIP
- Increase pace of Renewal & Replacement
- Meet new development demands
 - Plan review and new connections water/sewer/power
 - Expand power distribution network
- Manage Impacts of Drought



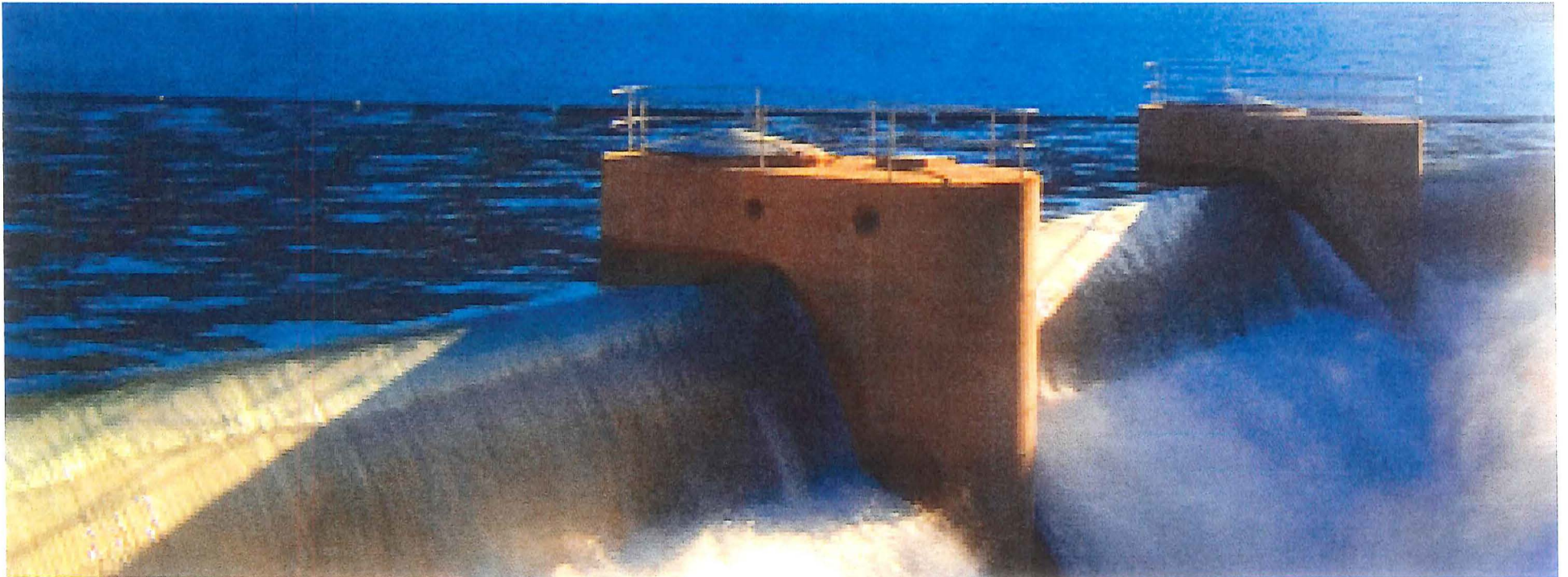
Water Sales Historical & Projected





Annual Budget Increases

	FY 2016-17	FY 2017-18
Operating Only	0.7%	1.3%





Two-Year Budget

(\$ Millions)

	FY 2015-16	FY 2016-17	FY 2017-18
Water	512.3	480.0	502.3
Wastewater	273.0	277.6	307.3
Hetch Hetchy	188.4	202.1	207.6
CleanPowerSF	0.0	33.7	40.2
Total Budget AAO	973.7	993.4	1,057.4



Total Full-Time Authorized Positions

	<u>Budget</u>	<u>Change</u>	<u>Change %</u>
FY 2015-16 Amended	2,419		
Water Renewal & Replacement	6		
Power Customer Development	2		
Project Development - Review & Inspection	2		
Water Quality - Groundwater Monitoring	2		
Power Wholesale & Retail Services	1		
Cross Connection Compliance	1		
Chief Nursery Specialist	1		
CleanPowerSF	5		
FY 2016-17 Request	2,439	20	1%
Water Renewal & Replacement	13		
New Sunol Yard/Watershed Facilities	1		
Volunteer/Outreach Coordinator	1		
Urban Watershed Management Program	1		
WECC/NERC	1		
CleanPowerSF	2		
FY 2017-18 Request	2,458	19	1%



2-Year Capital Budget Request

\$ Millions

	<u>FY 2016-17</u>	<u>FY 2017-18</u>	<u>Total</u>
Water	\$188.2	\$135.7	\$323.9
Wastewater	\$285.2	\$810.8	\$1,096.0
Hetch Hetchy	\$74.4	\$86.9	\$161.3
SFPUC TOTAL	<u>\$547.8</u>	<u>\$1,033.4</u>	<u>\$1,581.2</u>

Note: Excludes Financing Costs



Combined Water & Wastewater

Average Monthly Bill

			Financial Projection					
Fiscal Year	FY2014-15 Combined	FY2015-16 Combined	Water	Sewer	FY2016-17 Combined	Change vs prior year	Change vs 2 yrs ago	
Actual	2009-10		\$24	\$38	\$62			
	2010-11		\$28	\$43	\$71			
	2011-12		\$31	\$44	\$76			
	2012-13		\$35	\$47	\$82			
	2013-14		\$38	\$49	\$86			
	2014-15		\$37	\$45	\$82			
	2015-16		\$40	\$46	\$86			
	2016-17		\$44	\$50	\$94			
Projected	2017-18		\$47	\$57	\$104			
	2018-19	\$130	\$125	\$52	\$65	\$117	-\$8	-\$14
	2019-20	\$143	\$141	\$58	\$74	\$132	-\$9	-\$11
	2020-21	\$157	\$157	\$64	\$84	\$148	-\$9	-\$9
	2021-22	\$171	\$174	\$68	\$94	\$163	-\$11	-\$8
	2022-23	\$186	\$188	\$73	\$104	\$176	-\$12	-\$10
	2023-24	\$202	\$203	\$77	\$114	\$191	-\$12	-\$11
	2024-25	\$210	\$211	\$82	\$123	\$205	-\$6	-\$5
	2025-26	\$219	\$220	\$85	\$131	\$216	-\$4	-\$4
	2026-27	\$227	\$228	\$87	\$139	\$225	-\$3	-\$2
	2027-28	\$235	\$237	\$88	\$146	\$234	-\$4	-\$1
	2028-29	\$242	\$245	\$90	\$153	\$243	-\$2	\$1
	2029-30	\$249	\$253	\$92	\$159	\$251	-\$3	\$2



Questions?

