



San Francisco
Water Power Sewer
Services of the San Francisco Public Utilities Commission

SFPUC
Regional Groundwater Storage and Recovery Phase 2B
Pipeline Easement Acquisition
South San Francisco

November 13, 2024
Dina Brasil, Right-of-Way Manager, Real Estate Services

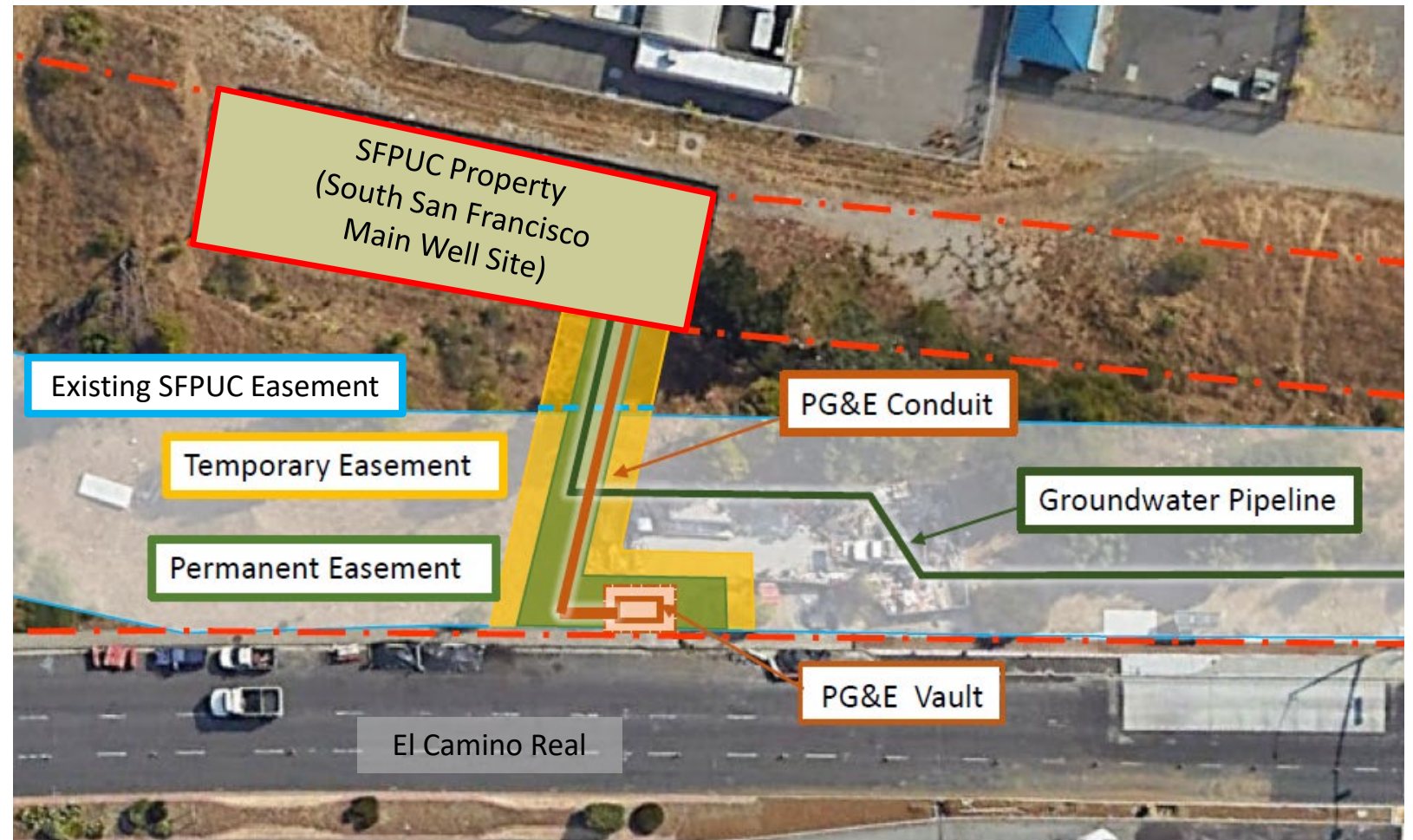
Groundwater Phase 2B Project Summary

- Install a groundwater pump system at the South San Francisco Main Well site.
- Install a water pipeline within El Camino Real and Chestnut Avenue to transport groundwater to Cal Water's groundwater treatment plant.
- Install the electrical utilities necessary to power the pump system.



Easements Needed

- Permanent easement for the **water pipeline** between the SFPUC Property and the Existing SFPUC Easement.
- Permanent easement for the **PG&E electrical utilities**, including a conduit and a vault, between the SFPUC Property and El Camino Real.
- **Temporary construction easements** during the installation of the water and electrical utilities.



Transaction Details

Parties to the Agreement:

- City and County of San Francisco, acting through the SFPUC, and Kaiser Foundation Hospitals.

Easement Details:

- A portion of Assessor's Parcel No. 010-292-450
 - Water: One approximately 441-square-foot perpetual easement for a water pipeline and an approximately 824-square-foot temporary construction easement to install the pipeline.
 - Electrical: One approximately 1,273-square-foot perpetual easement for electrical utilities (to be owned by PG&E) and an approximately 1,886-square-foot temporary construction easement to install the electrical utilities.

Purchase Price:

- \$266,100.

Additional Costs:

- Regular closing costs, estimated not to exceed \$10,000, and \$5,000 to reimburse the seller for appraisal expenses, as provided for in California Code of Civil Procedure Section 1263.025.



Questions?