



Behavioral Health Service Overview

Children, Youth, & Family System of Care



9.25.20
BOS Hearing

Farahnaz K. Farahmand, Ph.D., Interim Director & Assistant Director



CYF Mission, Vision, & Values: *Triple Aim*

- **Racial Humility**



- **Reflective Leadership, Supervision, & Practice**

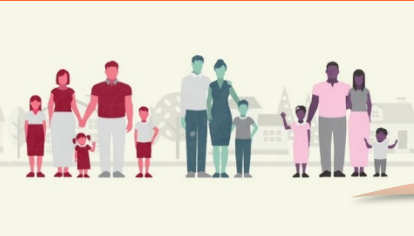


- **Trauma Informed Systems**





Children Youth & Families Services System of Care Overview



Self

Community Providers

**Systems Providers,
e.g. Schools, Juvenile
Probation & Child
Welfare**

Primary Care

Residential

Hospitalization

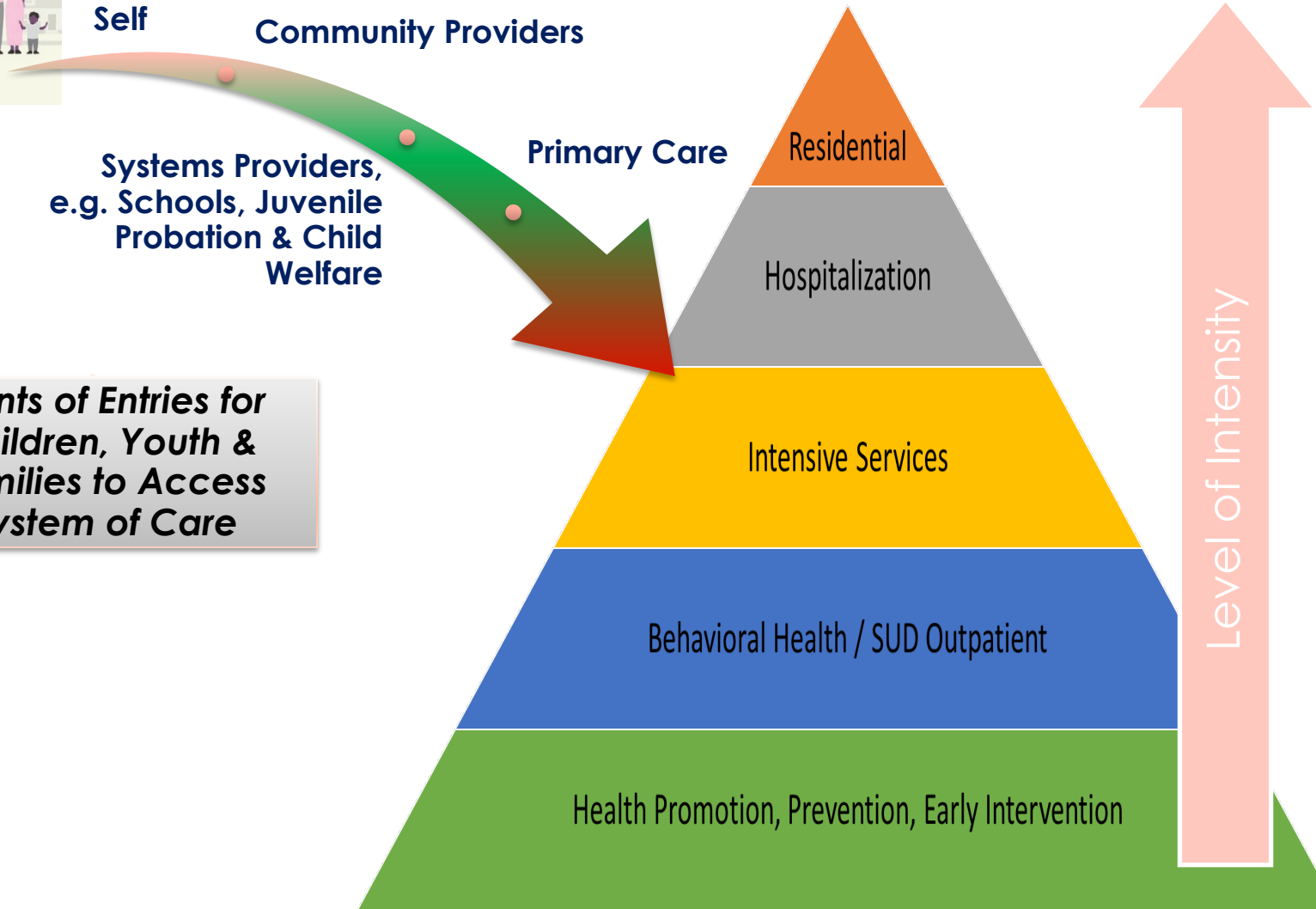
Intensive Services

Behavioral Health / SUD Outpatient

Health Promotion, Prevention, Early Intervention

Level of Intensity

**Points of Entries for
Children, Youth &
Families to Access
System of Care**





CYF SOC Partners



City Departments

- San Francisco Unified School District
- Juvenile Probation Department
- Human Services Agency
- Department of Children, Youth & their Families
- First 5 San Francisco

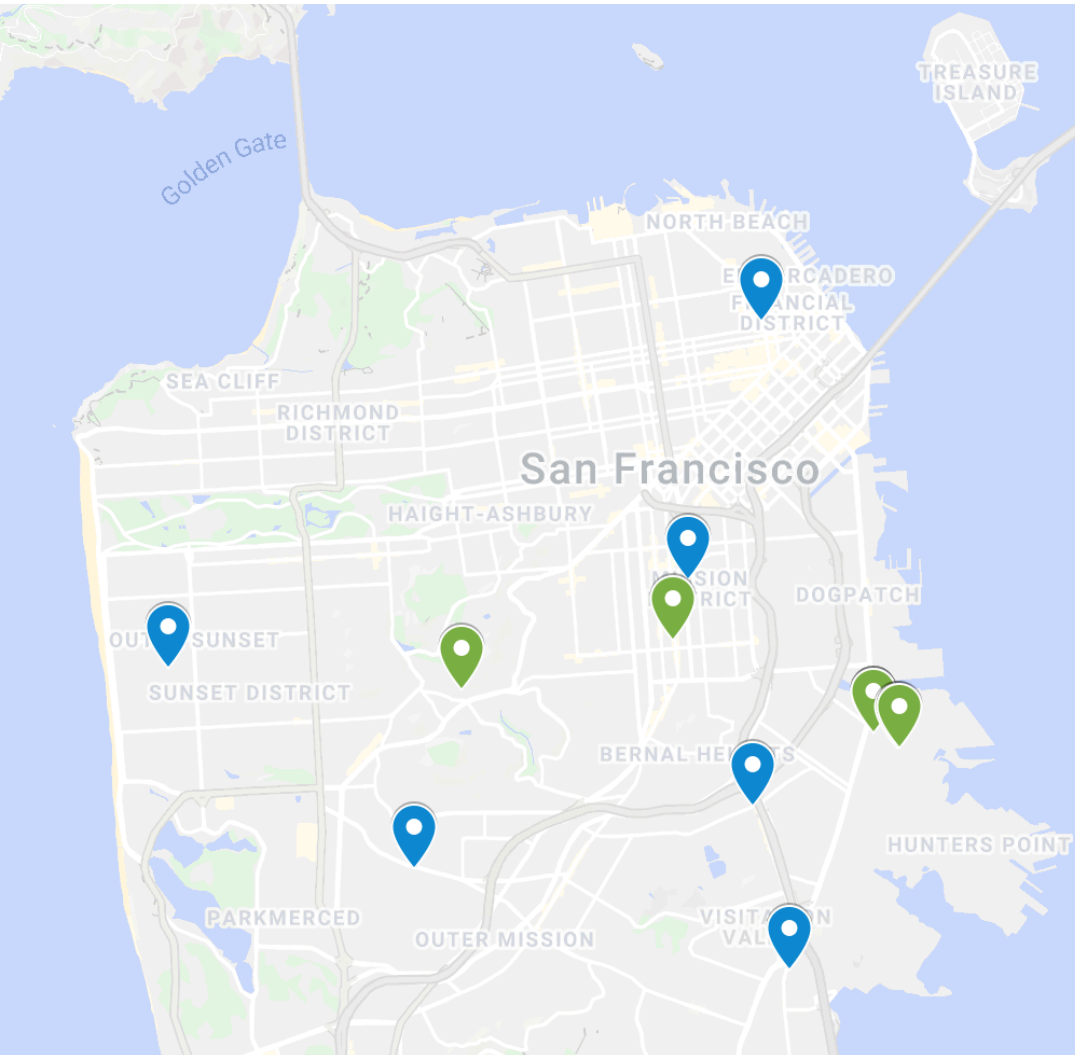


Other Key Partners

- Community-based Organizations (35-40 contracted)
- Private Provider Network (PPN)
- County, State & Federal Government



CYF Civil Service Clinics

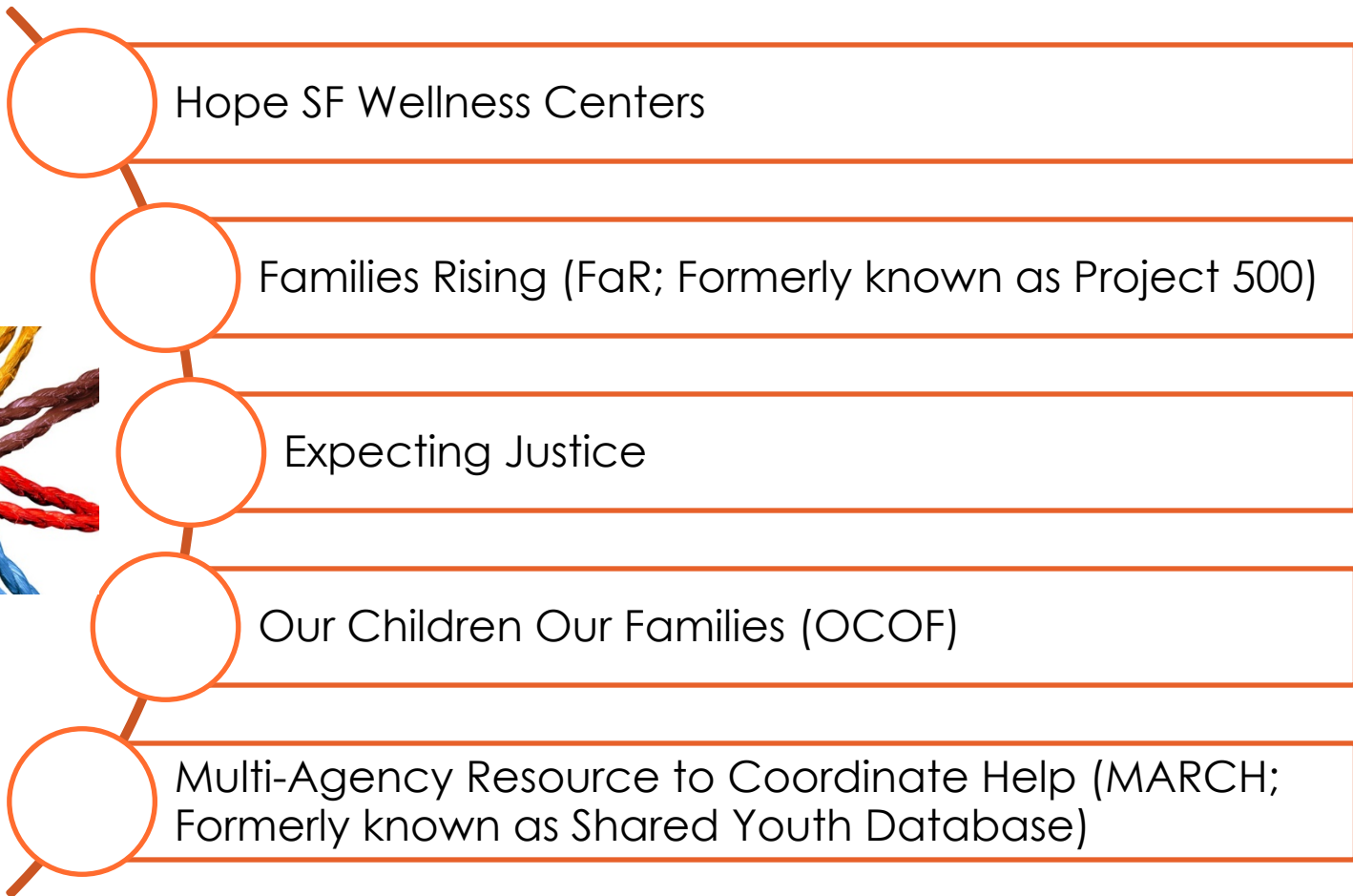


- **Outpatient Civil Service Clinics**
 - Chinatown Child Development Center
 - Mission Family Center
 - Southeast Child Family Therapy Center
 - OMI
 - Sunset Mental Health
- **Specialty Civil Service Clinics / Programs**
 - Comprehensive Crisis Services
 - Foster Care Mental Health
 - Family Mosaic Project
 - Lifting Empowering Generation of Children and Youth (LEGACY)
 - Special Programs for Youth
 - AIM Higher
 - Psychological Assessment Services



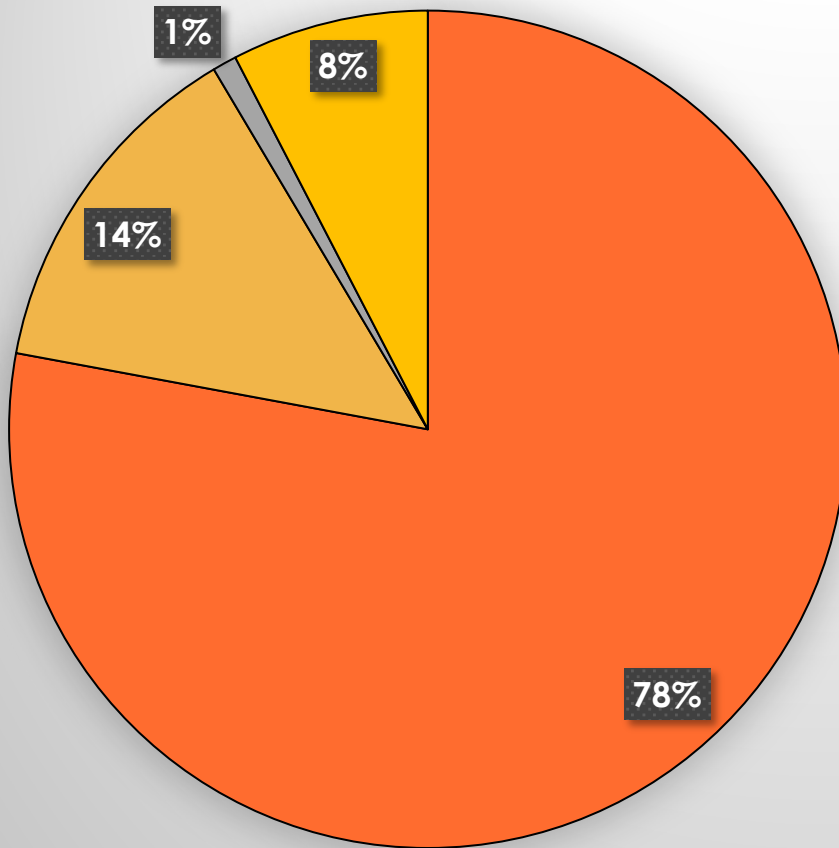
Additional CYF Specialty Programs & Collective Impact Initiatives

■ Mayoral & Collective Impact Initiatives





**Total Mental Health Budget:
\$90,054,282**



CYF Funding Source

- Medi-Cal, Realignment, County GF
- Work Order
- Grants
- MHSA



Current Snapshot of CYF Clients

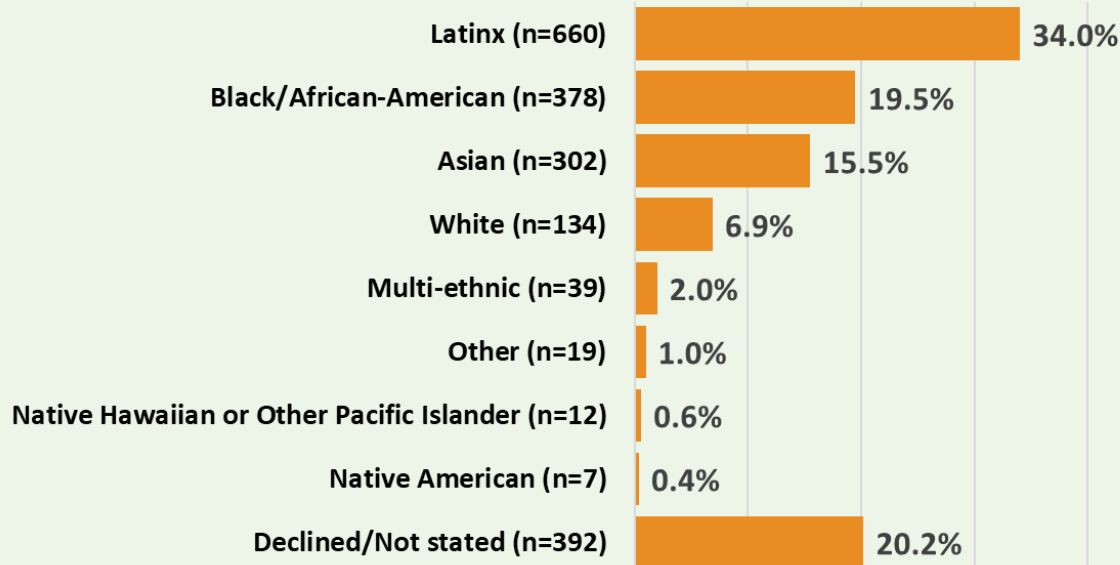
(as of 9/21/20)

This data reflects clients open in Specialty Mental Health & SUD Services

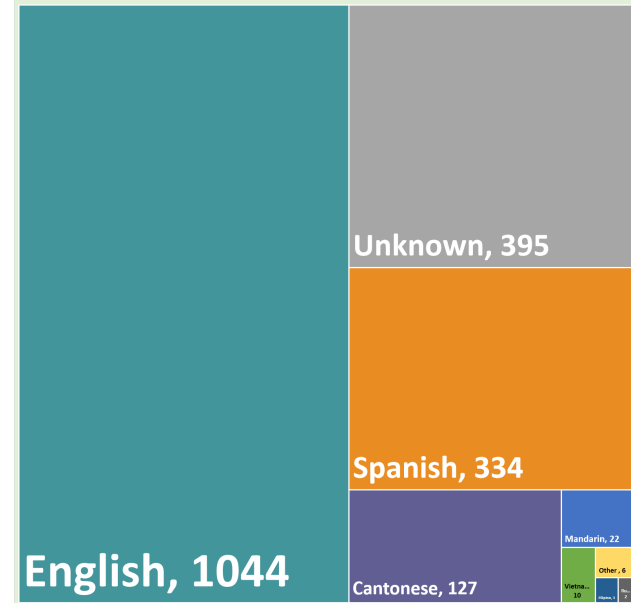
Open Episodes: 2,133; UDC: 1,943

Clients may be open in more than one program; thus Open Episodes > UDC

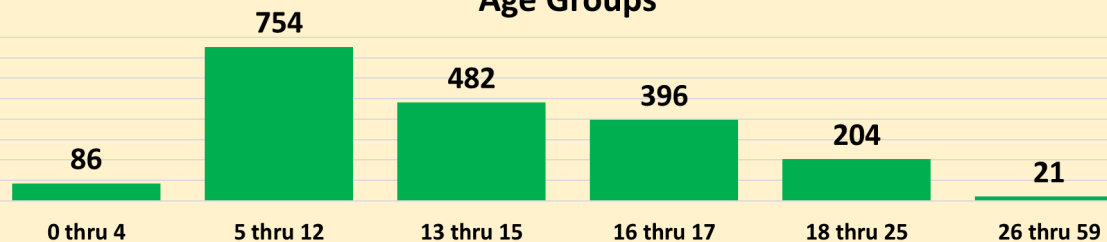
Race/Ethnicity of Child and Youth Clients



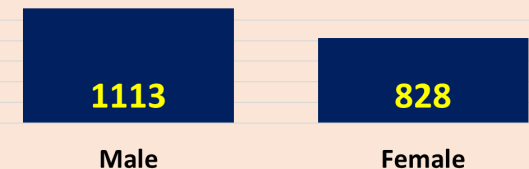
Language of Child/Youth



Age Groups



Sex*

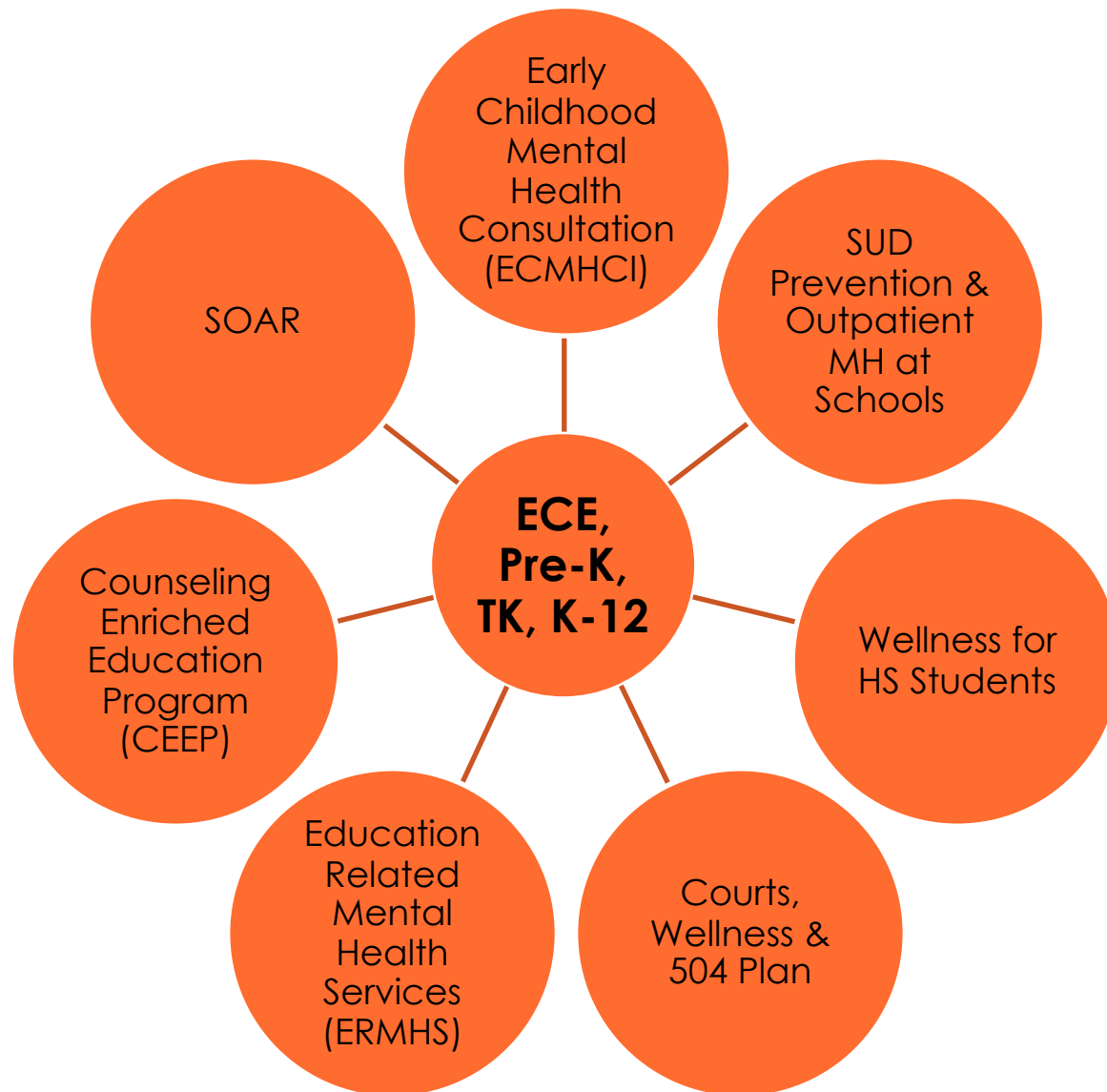


*Note: CYF non-binary data in development, unreliable at this time.



School Based Services

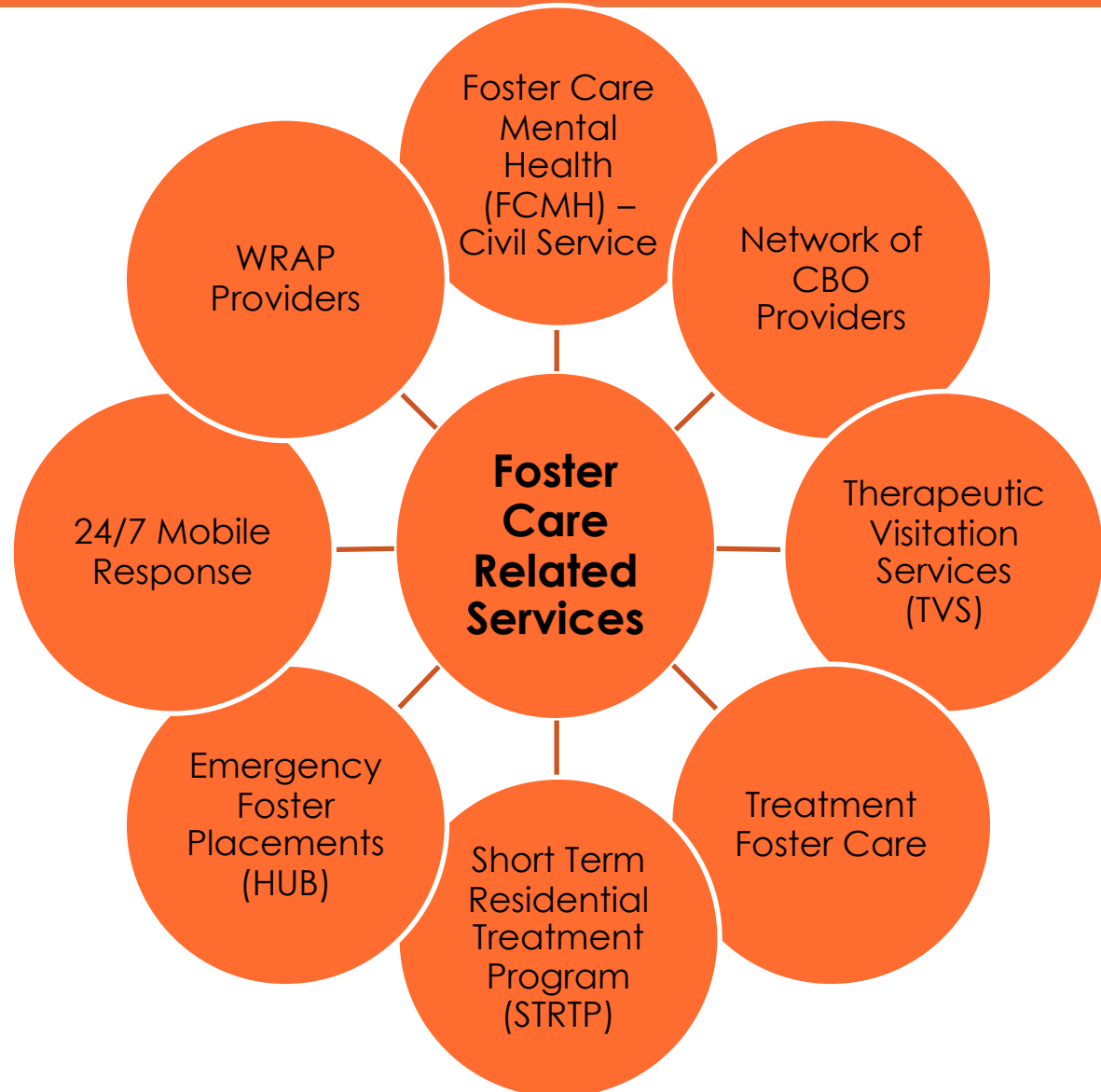
Structured interface between behavioral health service system and education system.





Child Welfare Services

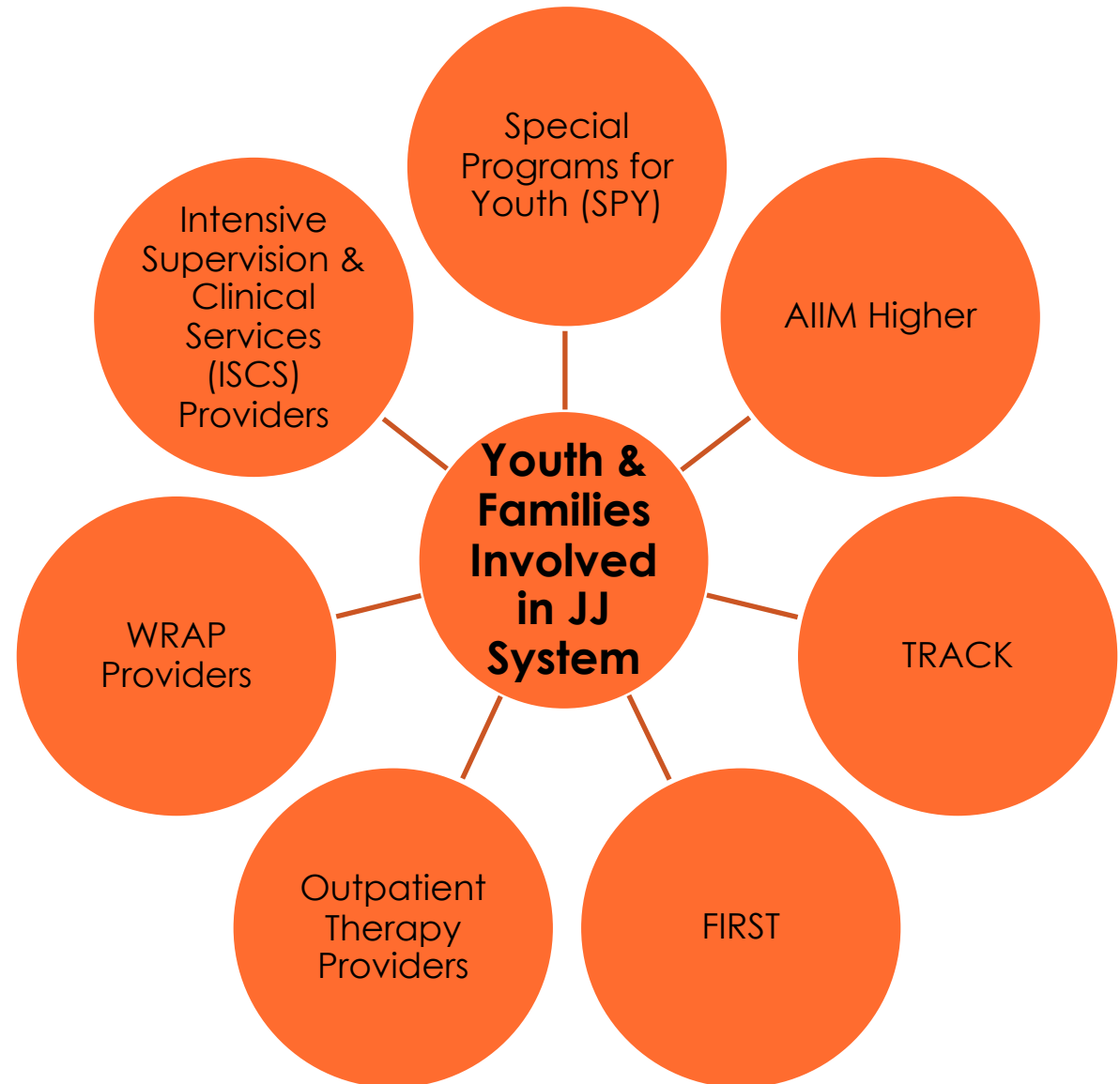
Structured interface between behavioral health service system and child welfare system.





Juvenile Justice Services

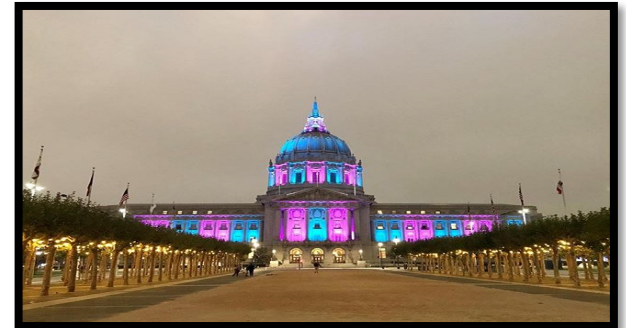
*Structured interface
between behavioral
health service system
and juvenile justice
system.*





COVID-19: Increased Acuity & Additional Services Implemented

- Increases in Clinical Acuity
- Monitoring Access & Engagement in CYF Services
- Expansion of 24/7 Mobile Response Team (MRT)
- SFUSD Family Resource Link: Staff the Mental Wellness Line
- Mental Health Linkage for Community Learning Hubs
- Context of Covid-19 & Racial Pandemic
- Staff Deployments & Vacancies





CYF Management Team

- Farahnaz Farahmand, Ph.D., Interim Director & Assistant Director
- Ho-Yin (Joe) Lai, LMFT, Interim Deputy Director & Clinical Operations Manager
- Chris Lovoy, LCSW, Assistant Director
- Alison Lustbader, LCSW, Intensive Services Manager
- Min Tan, Ph.D., LMFT, Director of School-Based Services
- Ritchie Rubio, Ph.D., Director of Practice Improvement & Analytics
- Laura Moyer, Interdivisional Initiatives Manager

