

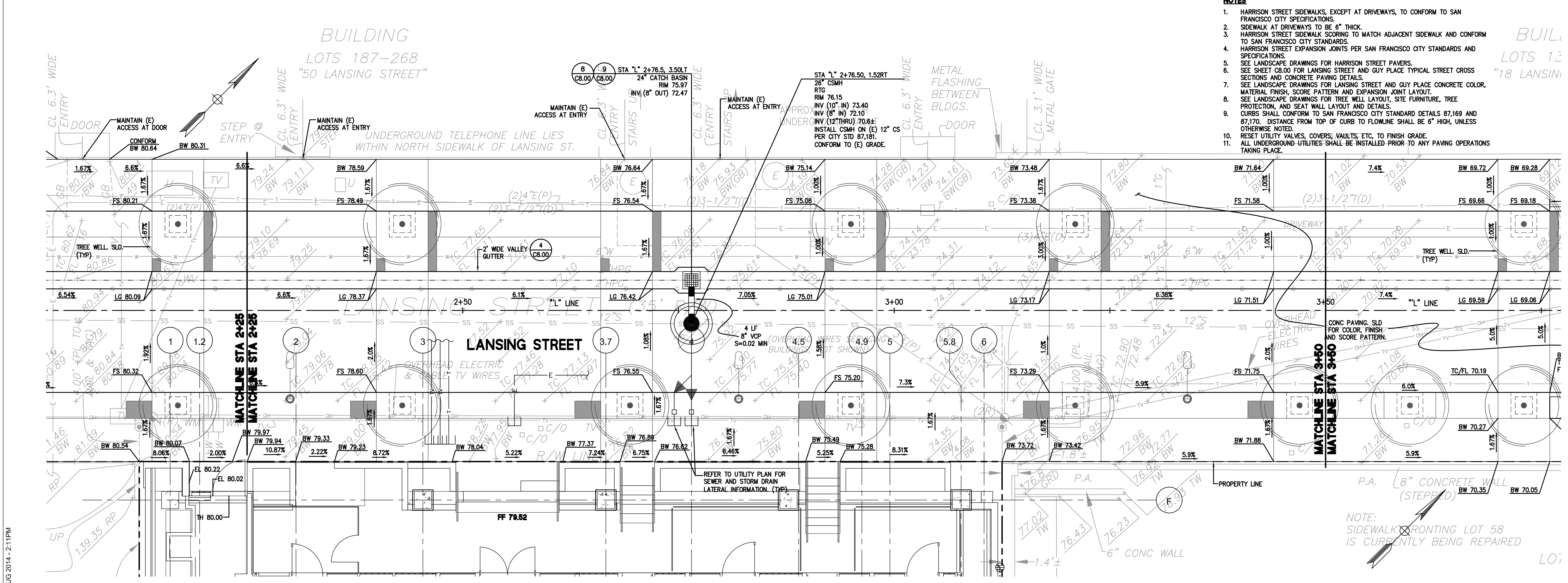
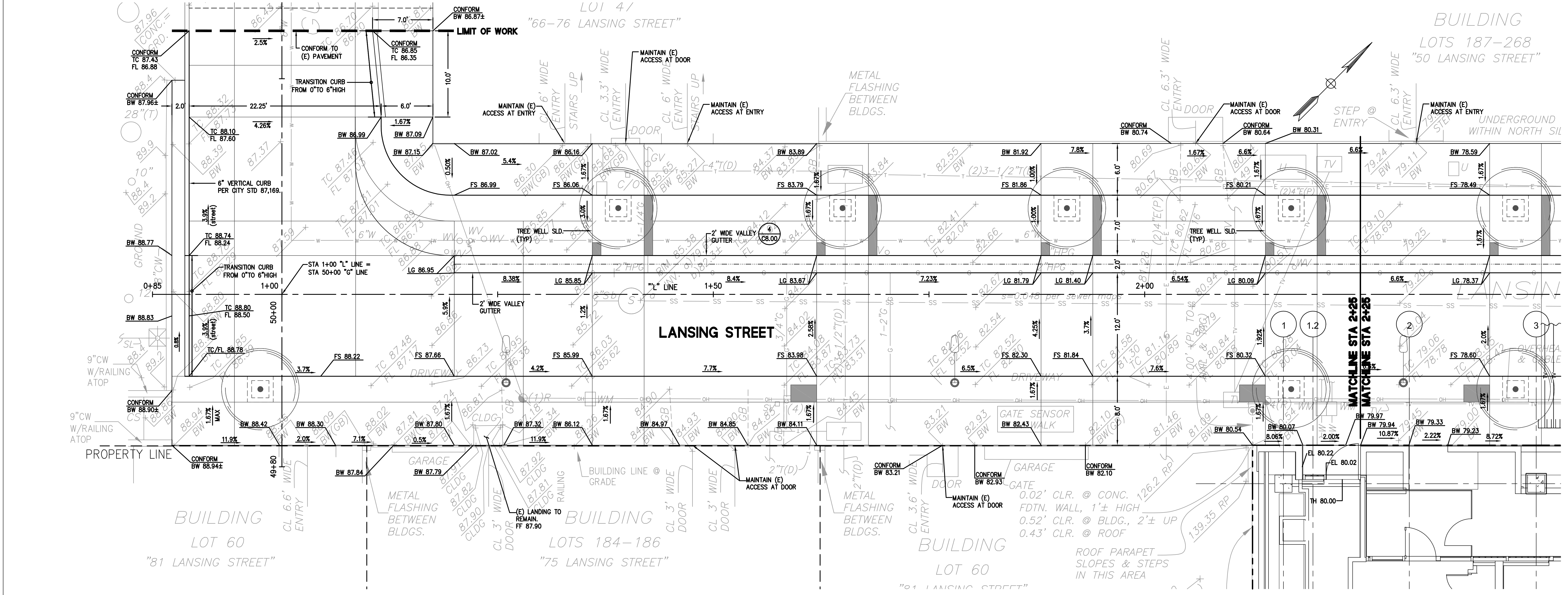


REVISION

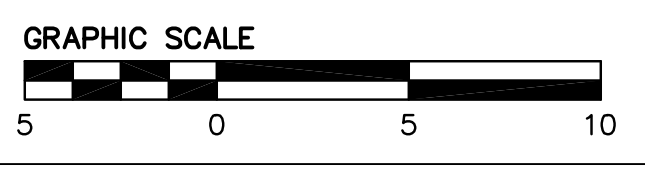
1	FINAL CONSTRUCTION DOC.	03/01/2013
2	PROGRESS PRINT	04/10/2013
3	PERMIT SUBMITTAL	09/26/2014

HKS PROJECT NUMBER
#13850
DATE
8/29/2014
ISSUE
PERMIT SUBMITTAL
ADDENDUM
SHEET TITLE
**GRADING PLAN
LANSING STREET**

SHEET NO.
C4.01



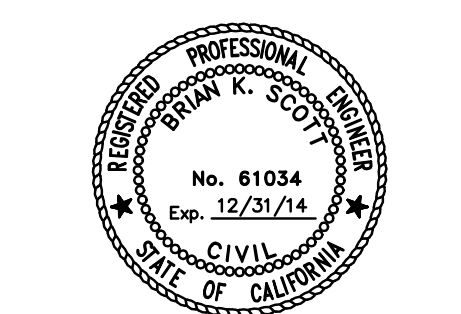
- NOTES**
- HARRISON STREET SIDEWALKS, EXCEPT AT DRIVEWAYS, TO CONFORM TO SAN FRANCISCO CITY SPECIFICATIONS.
 - SIDEWALK AT DRIVEWAYS TO BE 6" THICK.
 - SIDEWALK SIDEWALK SCORING TO MATCH ADJACENT SIDEWALK AND CONFORM TO SAN FRANCISCO CITY STANDARDS.
 - HARRISON STREET EXPANSION JOINTS PER SAN FRANCISCO CITY STANDARDS AND SPECIFICATIONS.
 - SEE LANDSCAPE DRAWINGS FOR HARRISON STREET PAVERS.
 - SEE SHEET C8.00 FOR LANSING STREET AND GUY PLACE TYPICAL STREET CROSS SECTIONS AND CONCRETE PAVING DETAILS.
 - SEE LANDSCAPE DRAWINGS FOR LANSING STREET AND GUY PLACE CONCRETE COLOR, MATERIAL FINISH, SCORE PATTERN AND EXPANSION JOINT LAYOUT.
 - SEE LANDSCAPE DRAWINGS FOR TREE WELL LAYOUT, SITE FURNITURE, TREE PROTECTION, AND SEAT WALL LAYOUT AND DETAILS.
 - CURBS SHALL CONFORM TO SAN FRANCISCO CITY STANDARD DETAILS 87,169 AND 87,170. DISTANCE FROM TOP OF CURB TO FLOWLINE SHALL BE 6" HIGH, UNLESS OTHERWISE NOTED.
 - RESET UTILITY VALVES, COVERS, VAULTS, ETC. TO FINISH GRADE.
 - ALL UNDERGROUND UTILITIES SHALL BE INSTALLED PRIOR TO ANY PAVING OPERATIONS TAKING PLACE.



USER:PW:CHINRC-12CHN
FILE NAME:K:ENGR08/080115DWG/SHEETS/C4.0.DWG
XREFS:
TIME: 28 AUG 2014 - 2:11PM

45 LANSING STREET RESIDENCES

45 LANSING STREET
SAN FRANCISCO, CA 94105



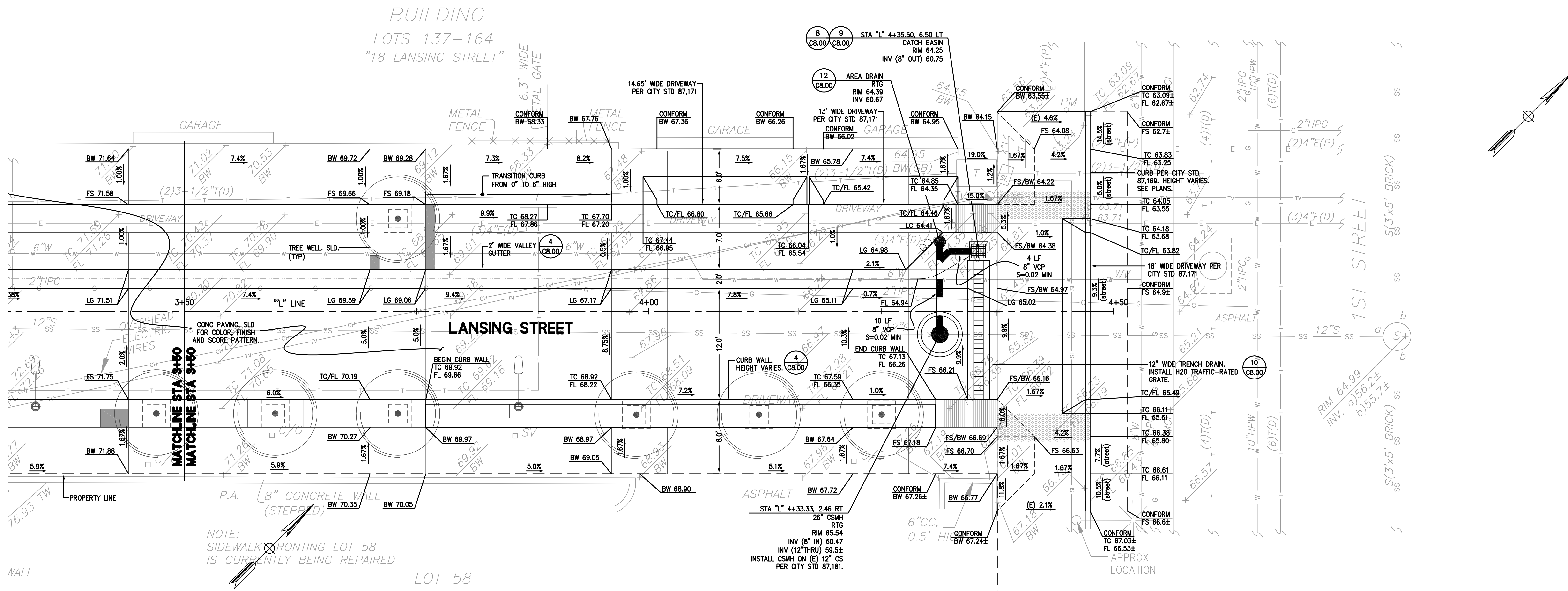
REVISION

1	FINAL CONSTRUCTION DOC.	03/01/2013
2	PROGRESS PRINT	04/10/2013
3	PERMIT SUBMITTAL	05/29/2014

HKS PROJECT NUMBER
#13850
DATE
8/29/2014
ISSUE
PERMIT SUBMITTAL
ADDENDUM
SHEET TITLE
GRADING PLAN
LANSING STREET

SHEET NO.

C4.02



NOTES

- HARRISON STREET SIDEWALKS, EXCEPT AT DRIVEWAYS, TO CONFORM TO SAN FRANCISCO CITY SPECIFICATIONS.
- SIDEWALK AT DRIVEWAYS TO BE 6" THICK.
- HARRISON STREET SIDEWALK SCORING TO MATCH ADJACENT SIDEWALK AND CONFORM TO SAN FRANCISCO CITY STANDARDS.
- HARRISON STREET EXPANSION JOINTS PER SAN FRANCISCO CITY STANDARDS AND SPECIFICATIONS.
- SEE LANDSCAPE DRAWINGS FOR HARRISON STREET PAVERS.
- SEE SHEET C8.00 FOR LANSING STREET AND GUY PLACE TYPICAL STREET CROSS SECTIONS AND CONCRETE PAVING DETAILS.
- SEE LANDSCAPE DRAWINGS FOR LANSING STREET AND GUY PLACE CONCRETE COLOR, MATERIAL FINISH, SCORE PATTERN AND EXPANSION JOINT LAYOUT.
- SEE LANDSCAPE DRAWINGS FOR TREE WELL LAYOUT, SITE FURNITURE, TREE PROTECTION, AND SEAT WALL LAYOUT AND DETAILS.
- CURBS SHALL CONFORM TO SAN FRANCISCO CITY STANDARD DETAILS 87,169 AND 87,170. DISTANCE FROM TOP OF CURB TO FLOWLINE SHALL BE 6" HIGH, UNLESS OTHERWISE NOTED.
- RESET UTILITY VALVES, COVERS, VAULTS, ETC. TO FINISH GRADE.
- ALL UNDERGROUND UTILITIES SHALL BE INSTALLED PRIOR TO ANY PAVING OPERATIONS TAKING PLACE.

