

# Presentation Overview

## SFMTA, Planning, SFCTA and Office of Capital Planning

1. Transit Recovery
2. Transit Investment Strategy
3. Streets and Freeways Strategy
4. ConnectSF land use background
5. Housing Element
6. Plan bay area
7. SFTP
8. Capital planning
9. Combined Schedule
10. Discussion

San Francisco Board of Supervisors  
Land Use and Transportation Committee Hearing  
November 15, 2021

# Winter 2022 Muni Service

## What We Heard & What We're Proposing

- ✓ Restore key prepandemic connections
  - For example, direct service to St. Mary's Hospital
- ✓ Preserve or restore Muni access in hilly areas
  - For example, Tenderloin, Alamo Square, Ashbury Heights
- ✓ Focus on access for people with disabilities and seniors
  - For example, service on Post and Sutter
- ✓ Find ways to address frequency
  - For example, Geary, Stockton and Mission

# Winter 2022 Muni Service Next Steps

- Continue outreach through the fall
- Seek policy guidance from SFMTA Board and Board of Supervisors
- Dec. 7: Return to SFMTA Board to propose approval
- Feb. 2022: Expected implementation



# Transit Strategy Recommendations

1

**Make the system work better** with maintenance and restoration

2

**Build a five -minute network** for reliable transit service citywide

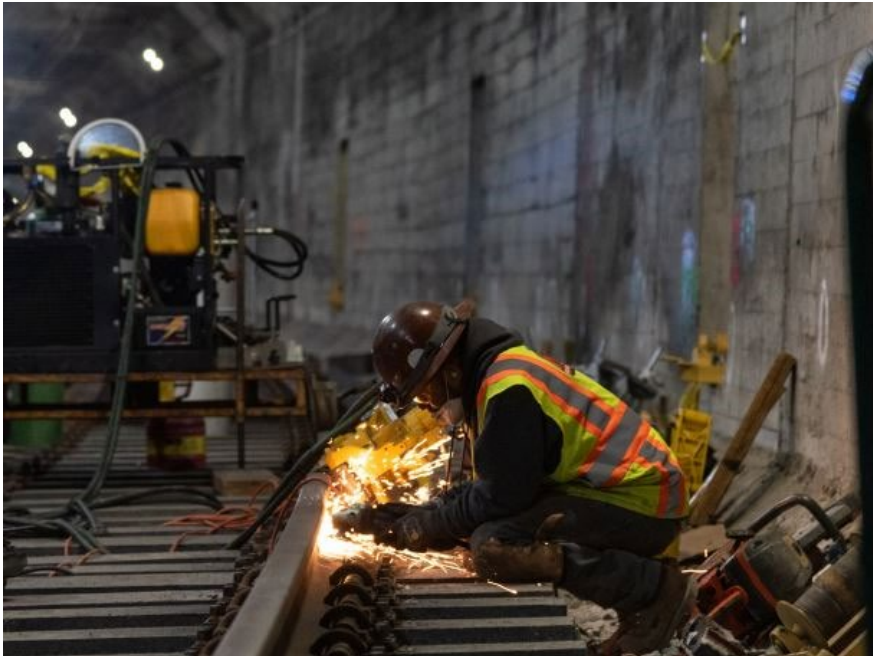
3

Increase speed, reliability, and capacity for a **modern rail system**

4

**Build more rail** where bus service won't be able to meet demand

# 1 Maintain and Restore our Transit System



# 2

## Five-Minute Network Improved Speed & Reliability



Street and signal improvements to preserve transit speed and reliability

Fast, frequent service and easy transfers throughout SF

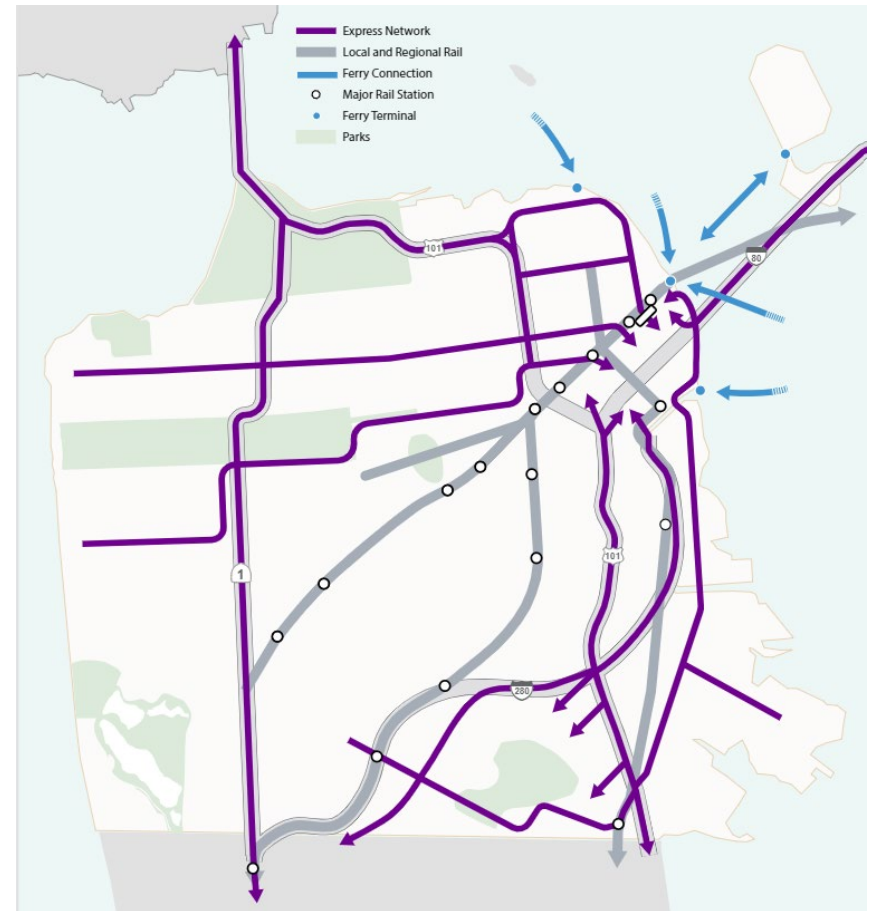


## 2 Regional and Local Express Service

Local and regional transit service that runs on freeways and highways

Dedicated express lanes to destinations within San Francisco and throughout the Bay Area

Complements rail and ferries



# 3

## Renew and Modernize Our Rail System

Subway renewal addresses crowding and congestion

Rebuild our aging rail network

Expand critical infrastructure that keeps trains moving

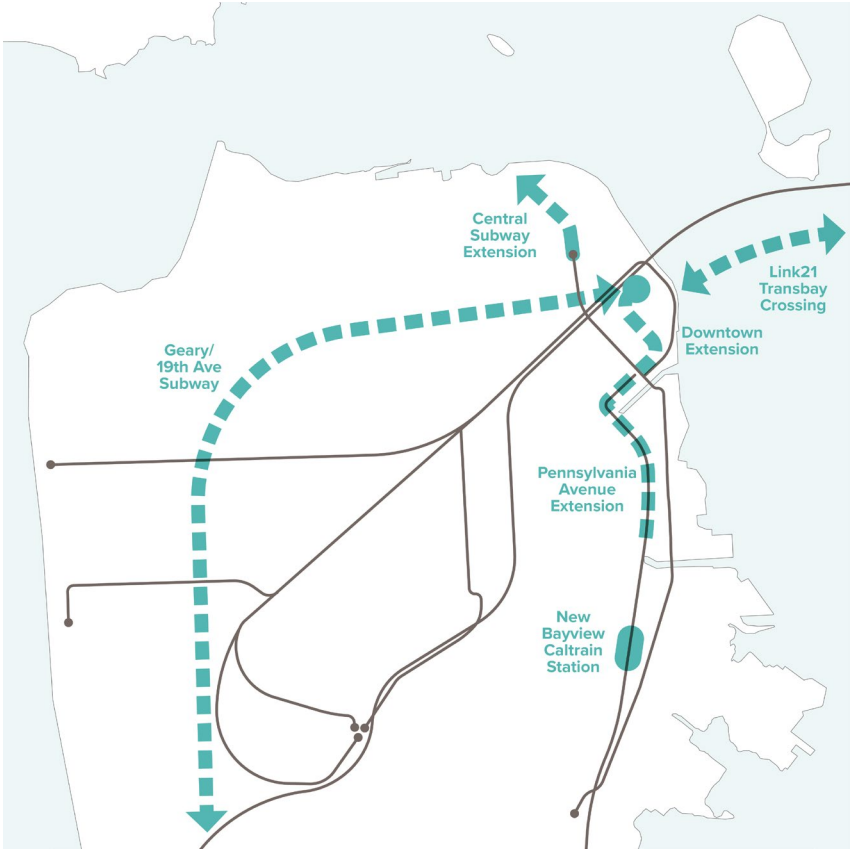
Longer trains and more reliable service





4

# Build Rail to SF's Busiest Places



# Streets and Freeway Study

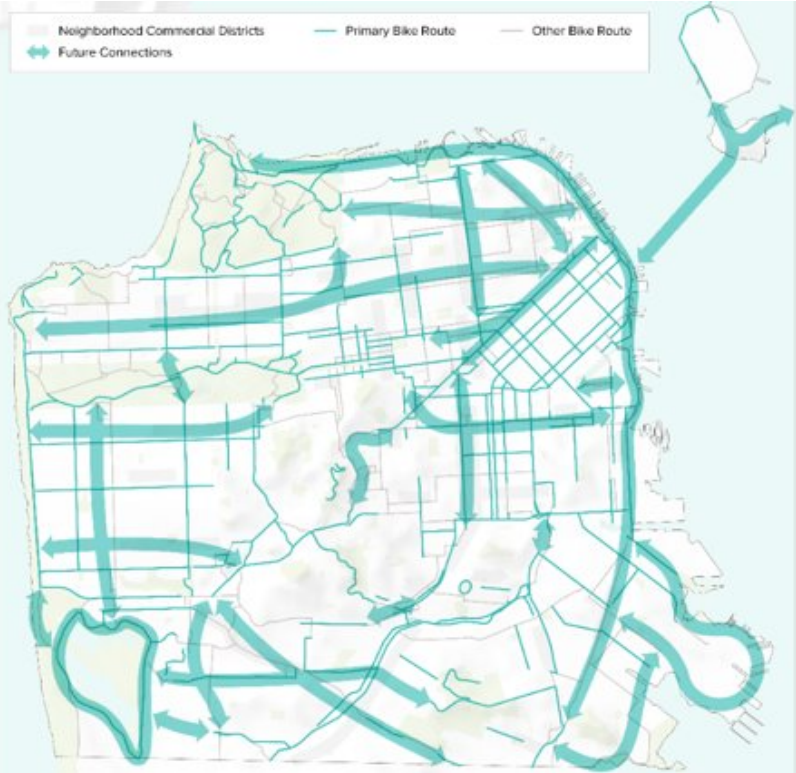
1. **Maintain** and reinvest in the current transportation system
2. **Prioritize transit** and carpooling on our streets and freeways
3. **Build** a complete network for walking and biking
4. **Prioritize safety** in all investments and through targeted programs
5. **Repair harms** and reconnect communities



# ConnectSF Streets and Freeways



San Francisco  
County Transportation  
Authority

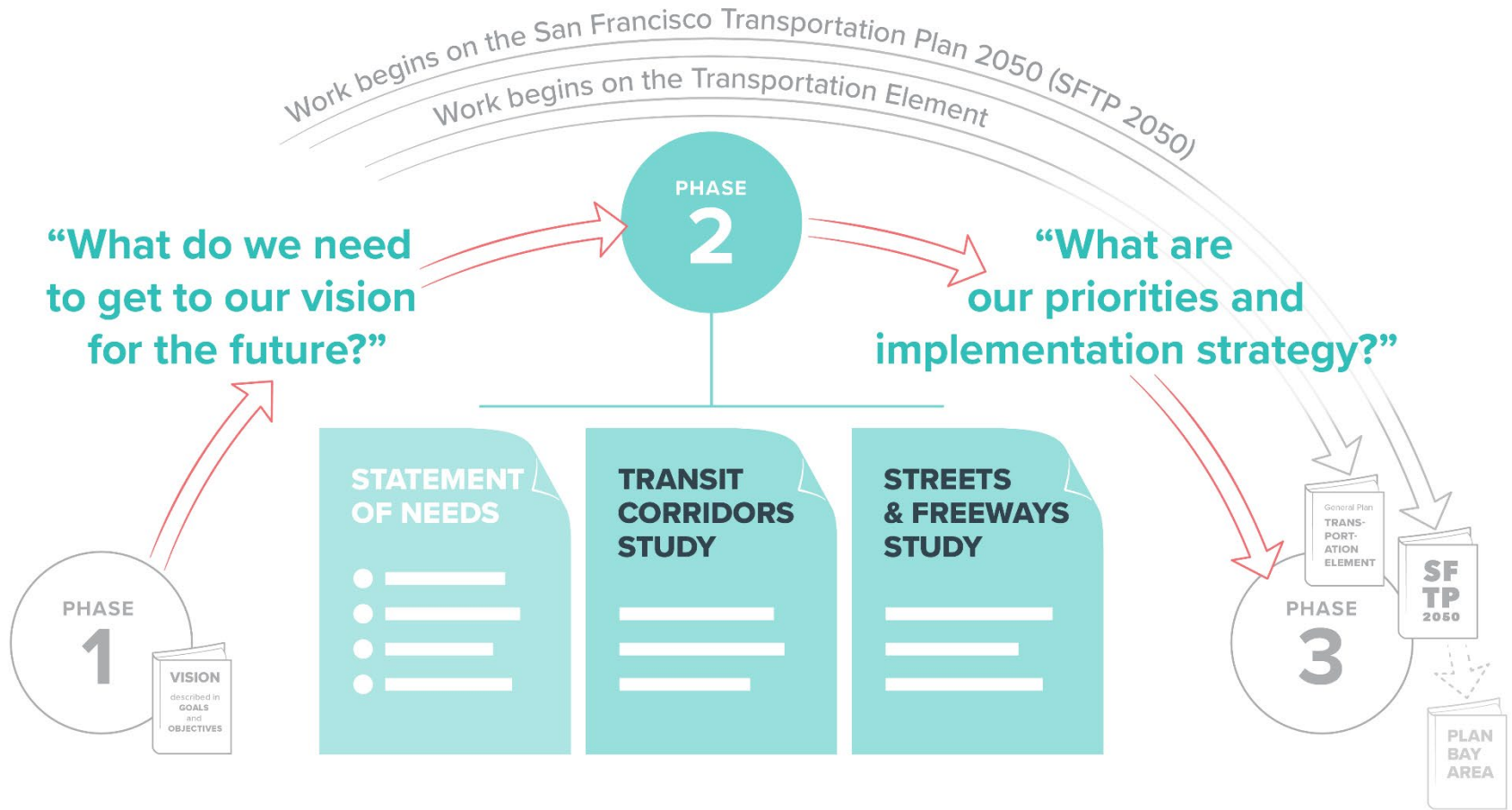


Geary Underpass



Brotherhood Way

# ConnectSF : Overall Process



# ConnectSF Vision



**Equity**



**Environmental  
Sustainability**



**Economic  
Vitality**



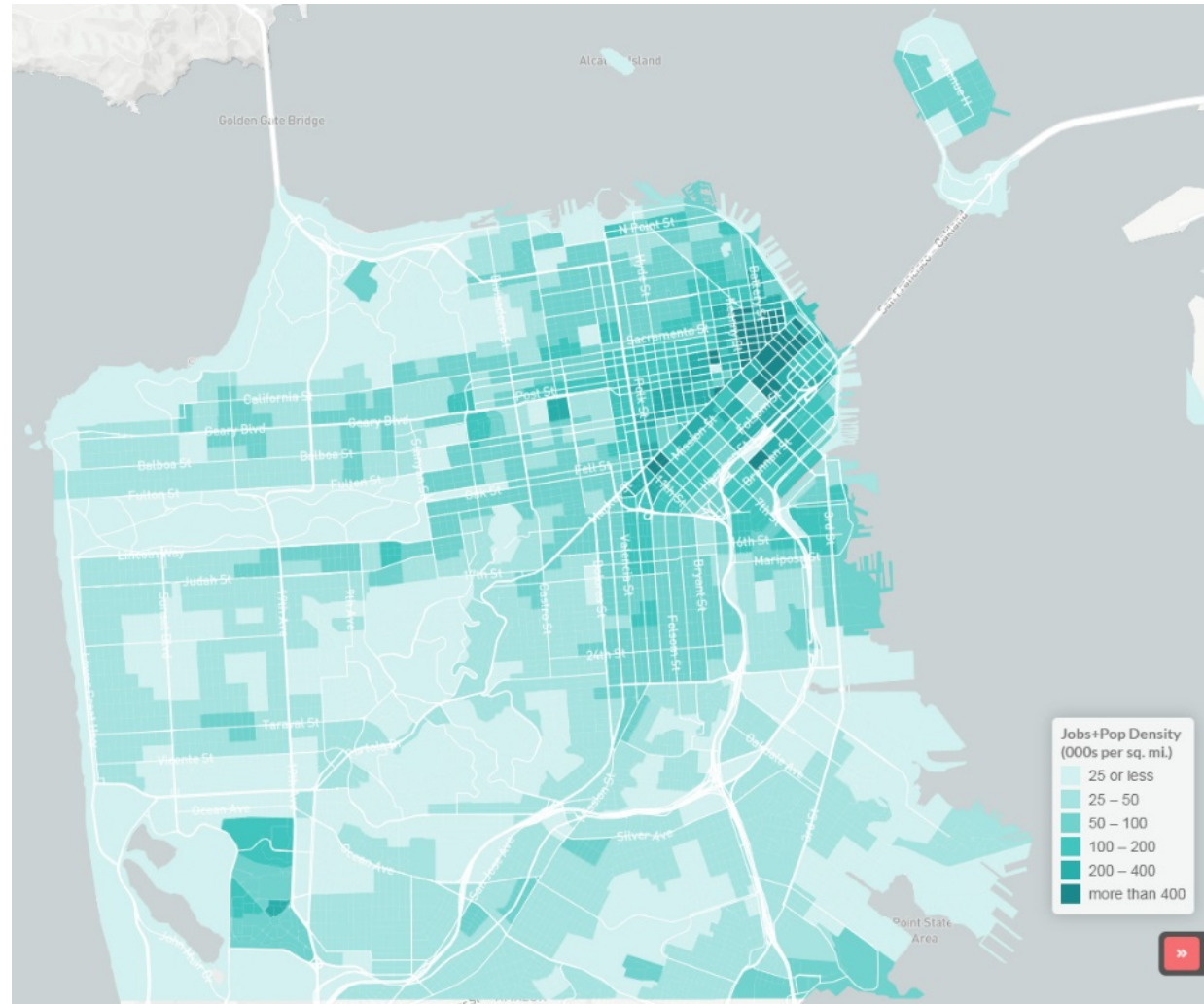
**Safety &  
Livability**



**Accountability  
& Engagement**

# ConnectSF: Planning

## SF Population & Employment Density in 2050



# San Francisco General Plan

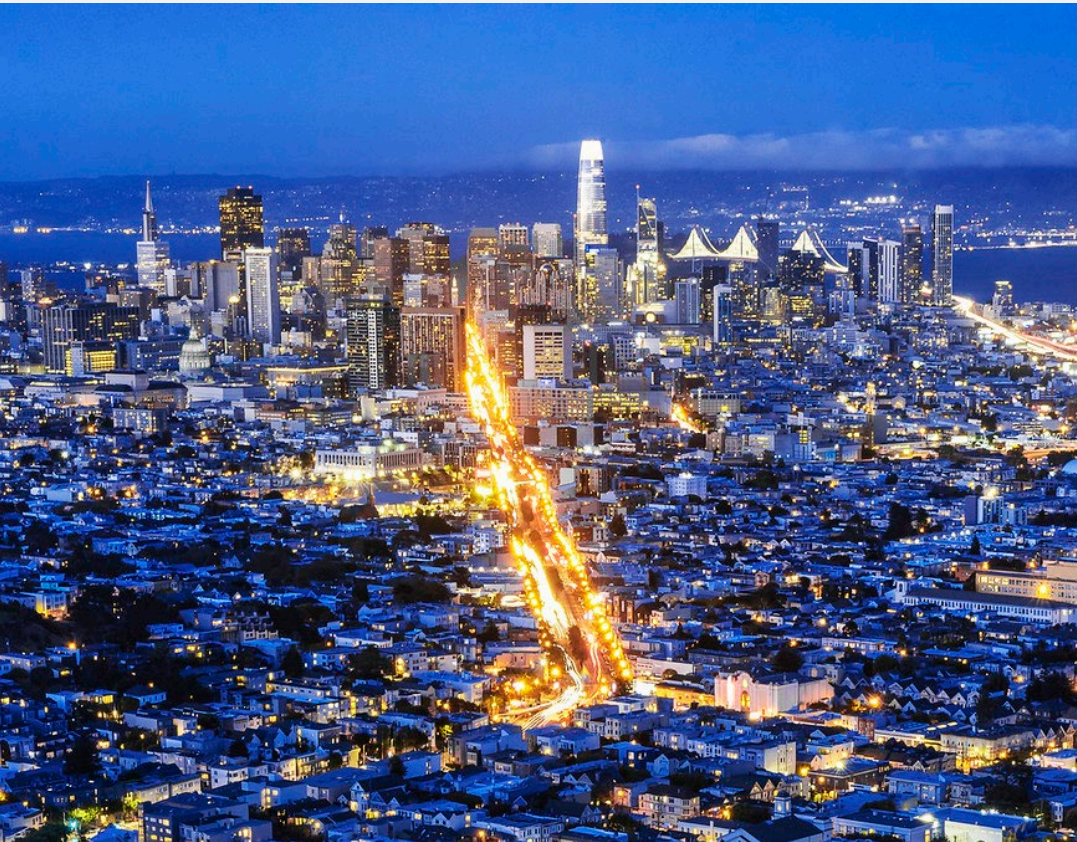


Photo: Flickr user Pablo Fernandez (CC BY-NC-ND 2.0)

- **It's San Francisco's blueprint.** The General Plan provides a comprehensive vision, objectives, and policies that influence how we live, work, play, move about, and the quality and character of the city.
- We develop and update the General Plan through an extensive engagement process to ensure that it reflects **community values** and **priorities**.
- Both **public action** and **private development** must conform to this vision.

# 2022 Housing Element

## Why a major update?



### Plan for Housing Targets RHNA

- Where?
- What type?
- For whom?

**2014-2022** 25,000 units

**2023-2031** 82,000 units



### Affirmatively Furthering the Fair Housing law

- Address exclusion and discrimination
- Create housing access in high-opportunity neighborhoods
- Bring opportunity to segregated and underserved neighborhoods



### Address Environmental Justice

- Incorporate Environmental Justice policies as required by State Bill 1000 (2016)
- Adopt policies in General Plan to address “unique or compounded health risks”



# 2022 Housing Element Growth



**Allowing small multi-family buildings near transit:**  
Removing density limits within 800' buffer around SFMTA 5-minute network and lines 33, 43, and 44



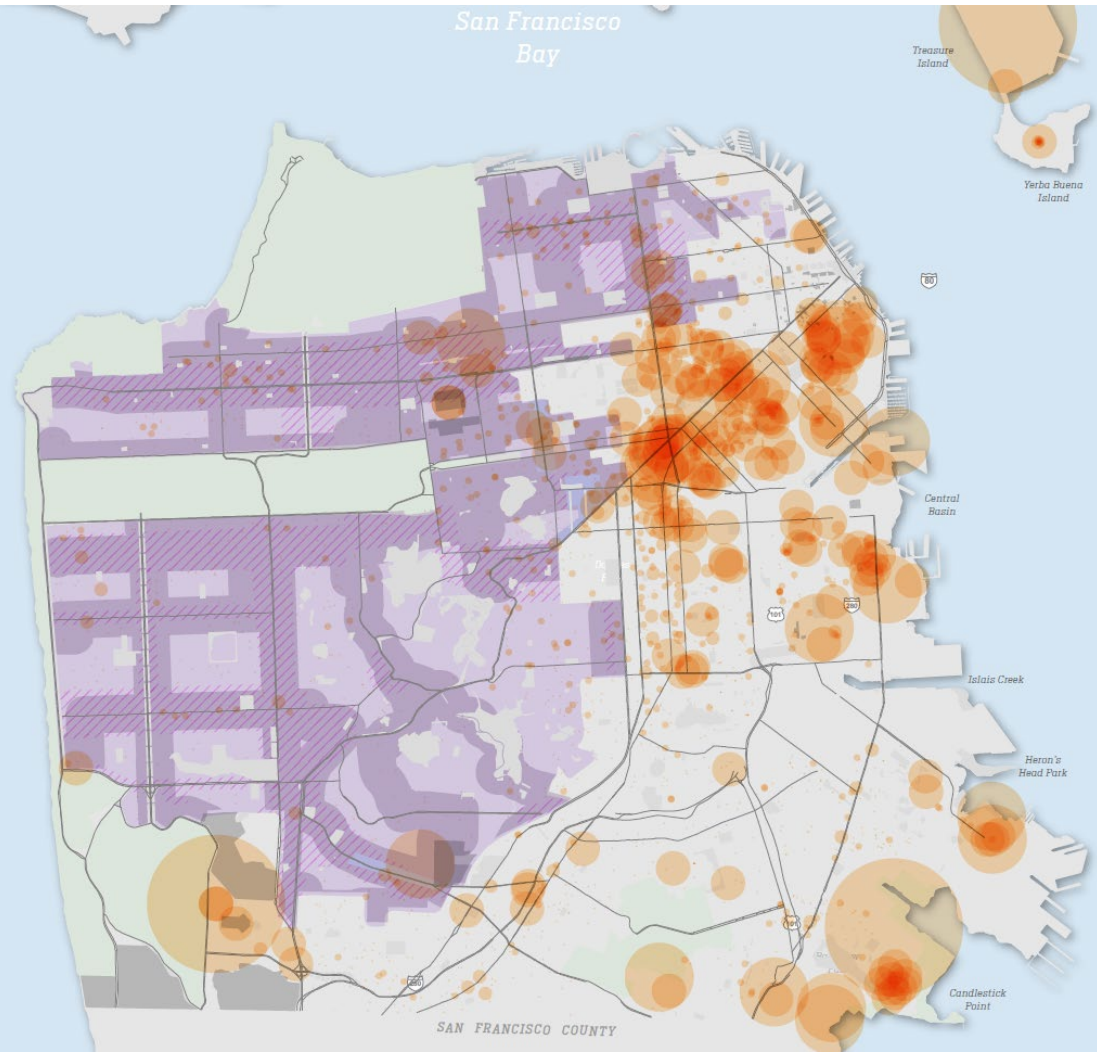
**Allowing midrise multi-family near transit:**  
Increasing height around a select group of routes within one or two blocks, or certain NC corridors



**Allowing 4-plexes:** within areas that fall outside of the buffer in high resource areas



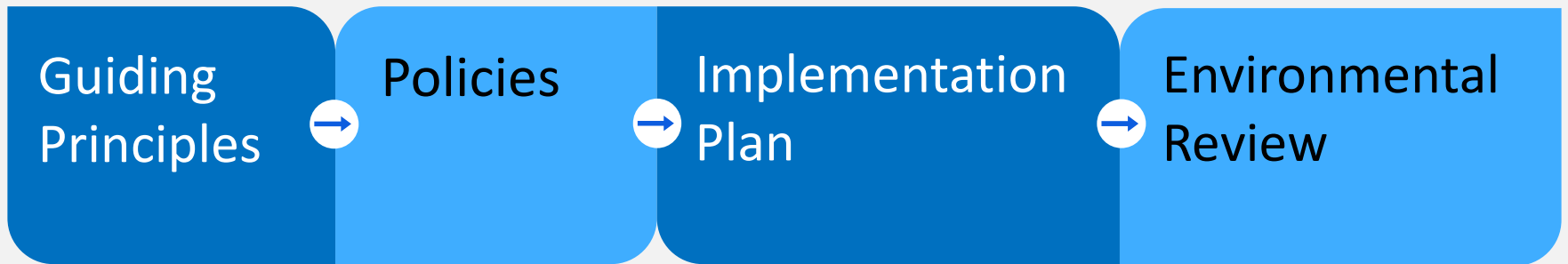
Pipeline 2019



Corridors considered for height increase: 17th and Market/Castro, 19th A California, Church, Divisadero, Geary, Judah, Junipero Serra, Lombard, Nc Park Presidio, Sloat, Sunset, Taraval, Union, Van Ness

# Transportation Element

*Racial & Social Equity – Environmental Justice – Climate Resilience*



OUTREACH

# Plan Bay Area 2050



**San Francisco  
County Transportation  
Authority**

**ConnectSF**

- San Francisco Board of Supervisors
- Land Use and Transportation Committee Hearing
- November 15, 2021

# Plan Bay Area (PBA) 2050



San Francisco  
County Transportation  
Authority

Statutorily-required **long-range plan for the nine-county Bay Area**

- Includes a **fiscally-constrained transportation project list**
- Regional strategy to meet **greenhouse gas (GHG) reduction targets**
- Accommodates **new housing growth**, at all income levels, within the region

Adopted by MTC & ABAG, October 2021



# What does Plan Bay Area 2050 include?



San Francisco  
County Transportation  
Authority



## 4 Elements:

- Transportation
- Housing
- Economy
- Environment

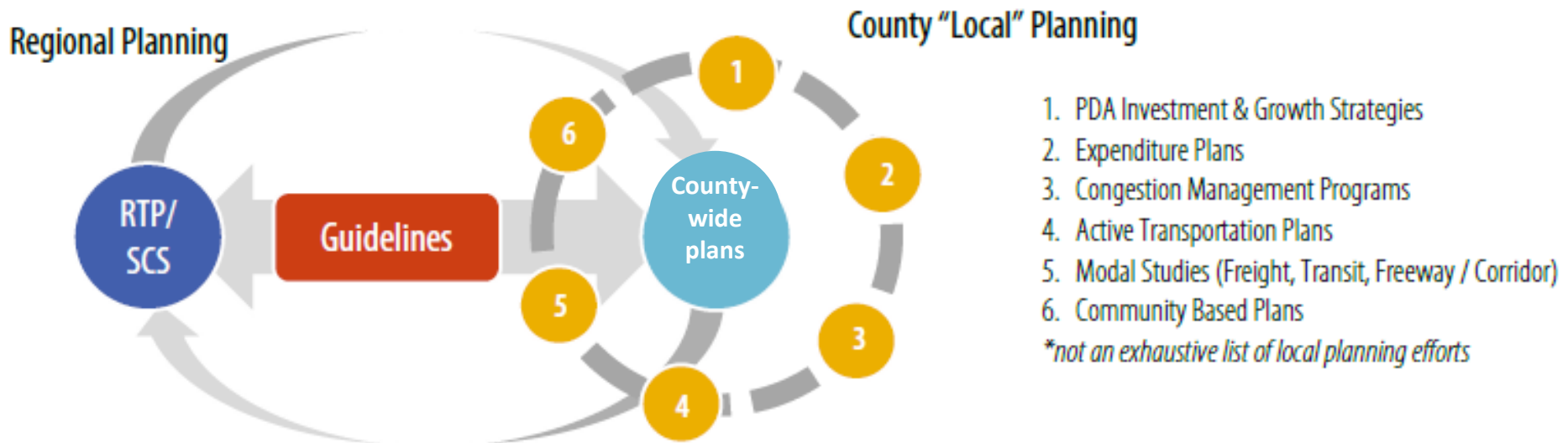
## 2 Overarching Themes:

- Equity
- Resiliency

# Plan Bay Area 2050 and the San Francisco Transportation Plan

Plan Bay Area 2050 and the San Francisco Transportation Plan 2050 (SFTP 2050) are highly coordinated:

- Housing and Employment Growth Assumptions
- Transportation Revenue Forecast and Project Priorities



# PBA 2050 Housing & Employment Growth

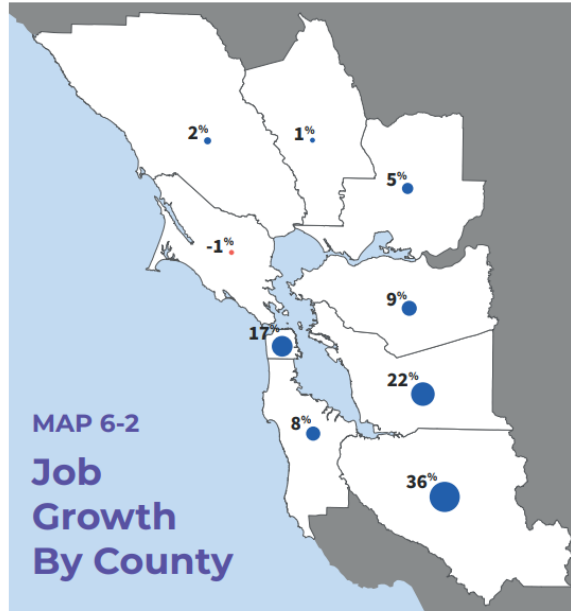
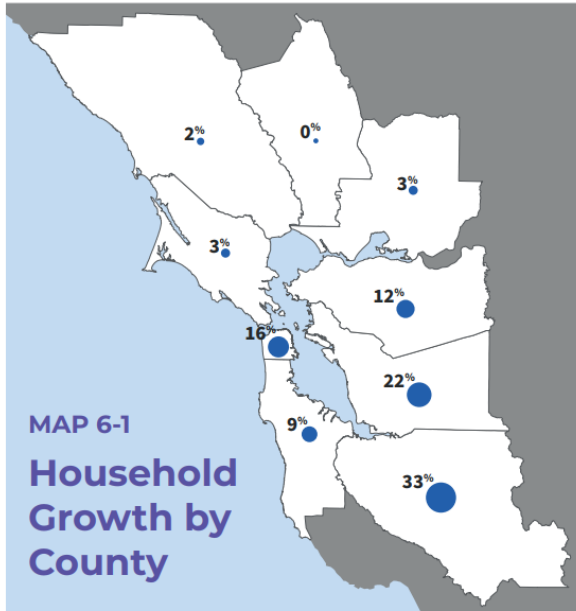


San Francisco  
County Transportation  
Authority

Household Growth Between 2015-2050  
(as a share of region's growth)  
**+1.4M Households**

Job Growth Between 2015-2050  
(as a share of region's growth)  
**+1.4M Jobs**

- Planned growth in San Francisco:
- ~219,000 new households
- ~239,000 new jobs



# PBA 2050 Implementation Priorities



San Francisco  
County Transportation  
Authority

- Plan Bay Area 2050 includes all of San Francisco's priority transportation projects.
- We continue to work with regional agencies on near-term actions, including:



*Prioritize transit state of good repair and core-capacity investments*



*Continue to invest in Climate Initiatives*



*Increase funding to support Priority Development Area and community-based planning*



*Support advancement of the Downtown Rail Extension*



# San Francisco Transportation Plan (SFTP) 2050



**San Francisco  
County Transportation  
Authority**

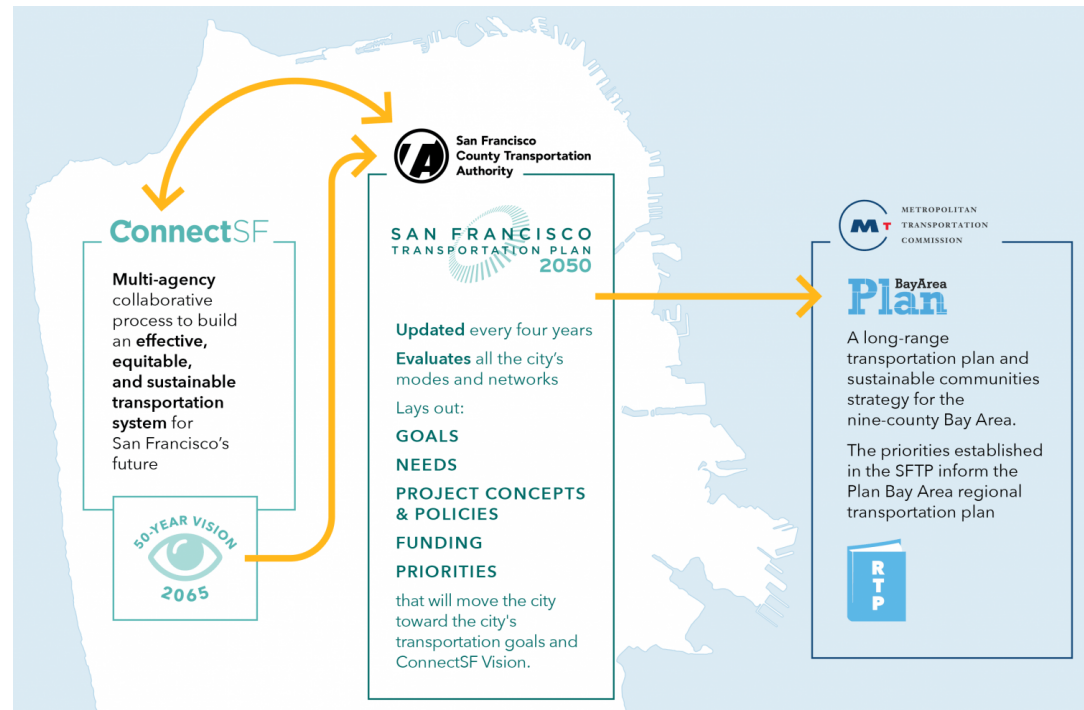
**ConnectSF**

- San Francisco Board of Supervisors
- Land Use and Transportation Committee Hearing
- November 15, 2021

# What is the SFTP?

The San Francisco Transportation Plan is the countywide 30-year blueprint for transportation system development & investments

- Integrates all modes and operators
- Identifies infrastructure priorities for state and federal funding
- Includes policy initiatives
- Investment and Vision Plans
- Updated every four years with Plan Bay Area



# How is the SFTP developed?



San Francisco  
County Transportation  
Authority

## SFTP Inputs

1. ConnectSF
  - Vision
  - Goals
  - Needs
  - Modal Studies
2. Plan Bay Area 2050
3. Other



## SFTP Components

- Strategic initiatives / policies
- Outreach and engagement
- Financial needs assessment
- Revenue estimates
- Performance metrics / prioritization



## SFTP 2050

- Investment Plan
- Vision Plan
- Recommendations: policies and strategic initiatives



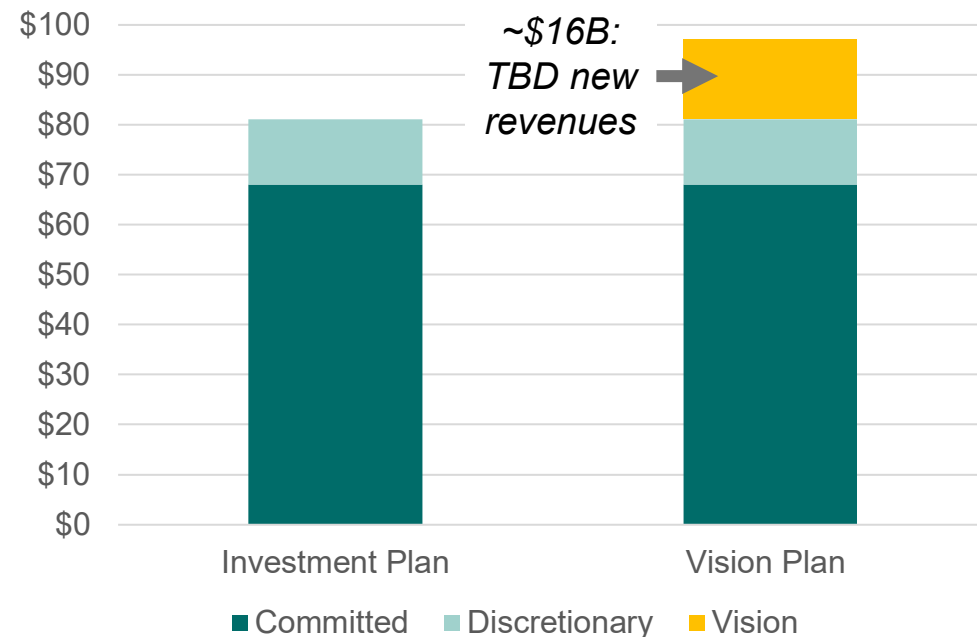
# SFTP Investment Strategies



San Francisco  
County Transportation  
Authority

- **Committed** funds are limited in how they can be used
- **Discretionary** funds are more flexible
- **Investment Plan** based on the expected transportation revenue for 30 years
- **Investment Vision** considers potential new transportation revenues

**Draft Investment and Vision Plan Revenues,  
2020 dollars (in billions)**



# Committed vs Discretionary Funds



San Francisco  
County Transportation  
Authority

## **60% LOCAL COMMITTED**

e.g. Developer Fees; TNC Tax

## **9% REGIONAL COMMITTED**

e.g. Bridge Tolls

## **6% STATE COMMITTED**

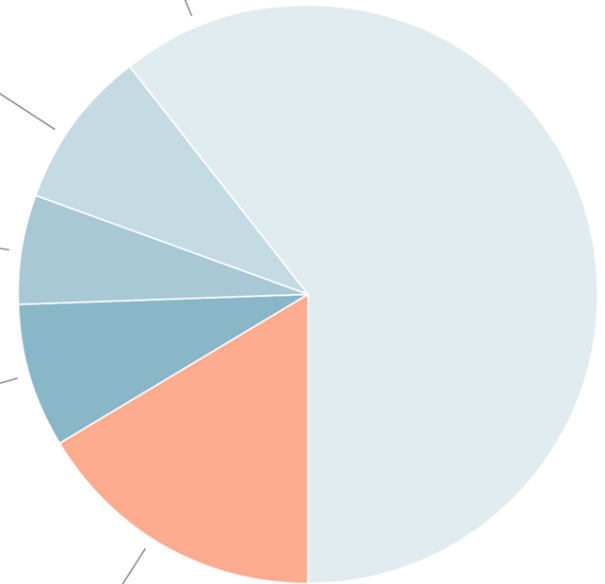
e.g. Gas Tax Subvention for Local Streets and Roads

## **8% FEDERAL COMMITTED**

e.g. FTA State of Good Repair Formula Funds

## **16% DISCRETIONARY REVENUES**

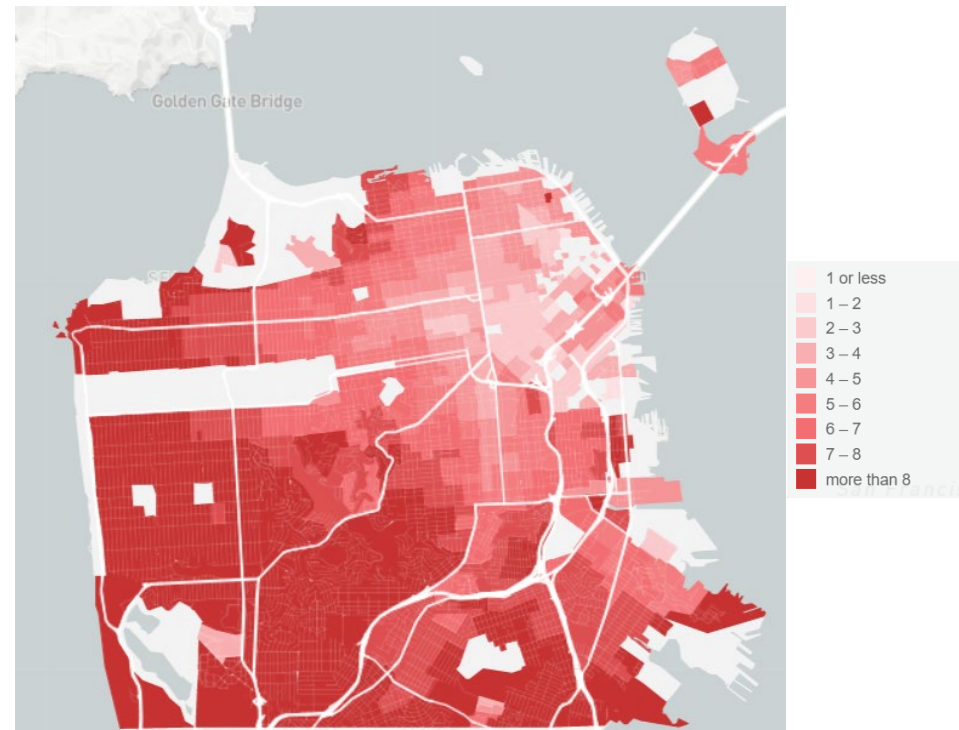
e.g. OBAG; SB 1 Competitive Programs; New/Small Starts; Anticipated Unspecified



# SFTP Goals and Needs

- Equity
- Economic Vitality
- Environmental Sustainability
- Safety and Livability
- Accountability and Engagement

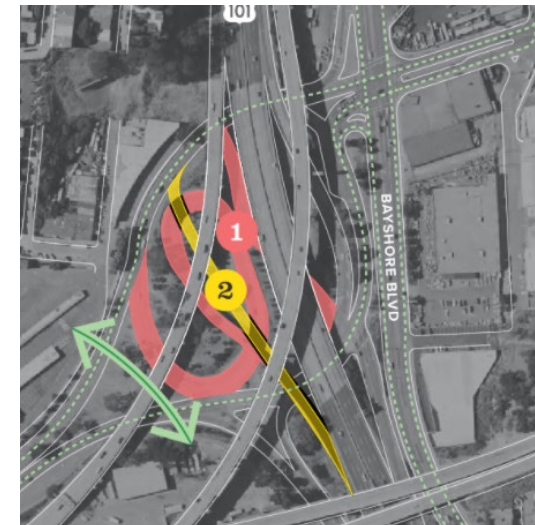
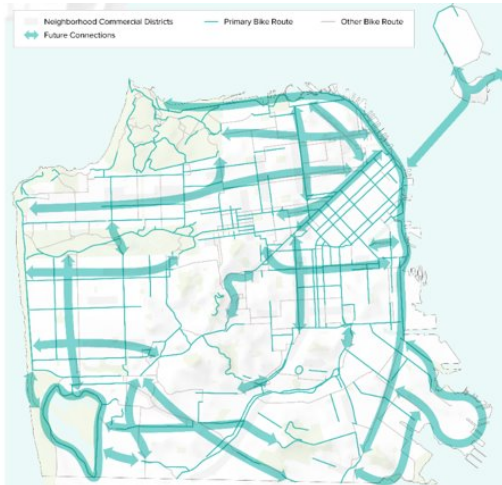
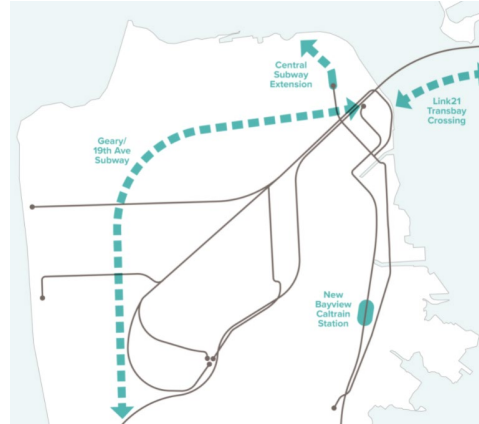
Vehicle Miles Traveled Per Person, 2015



# Transportation Constrained and Vision Plan



San Francisco  
County Transportation  
Authority



# Policy Initiatives and Strategies



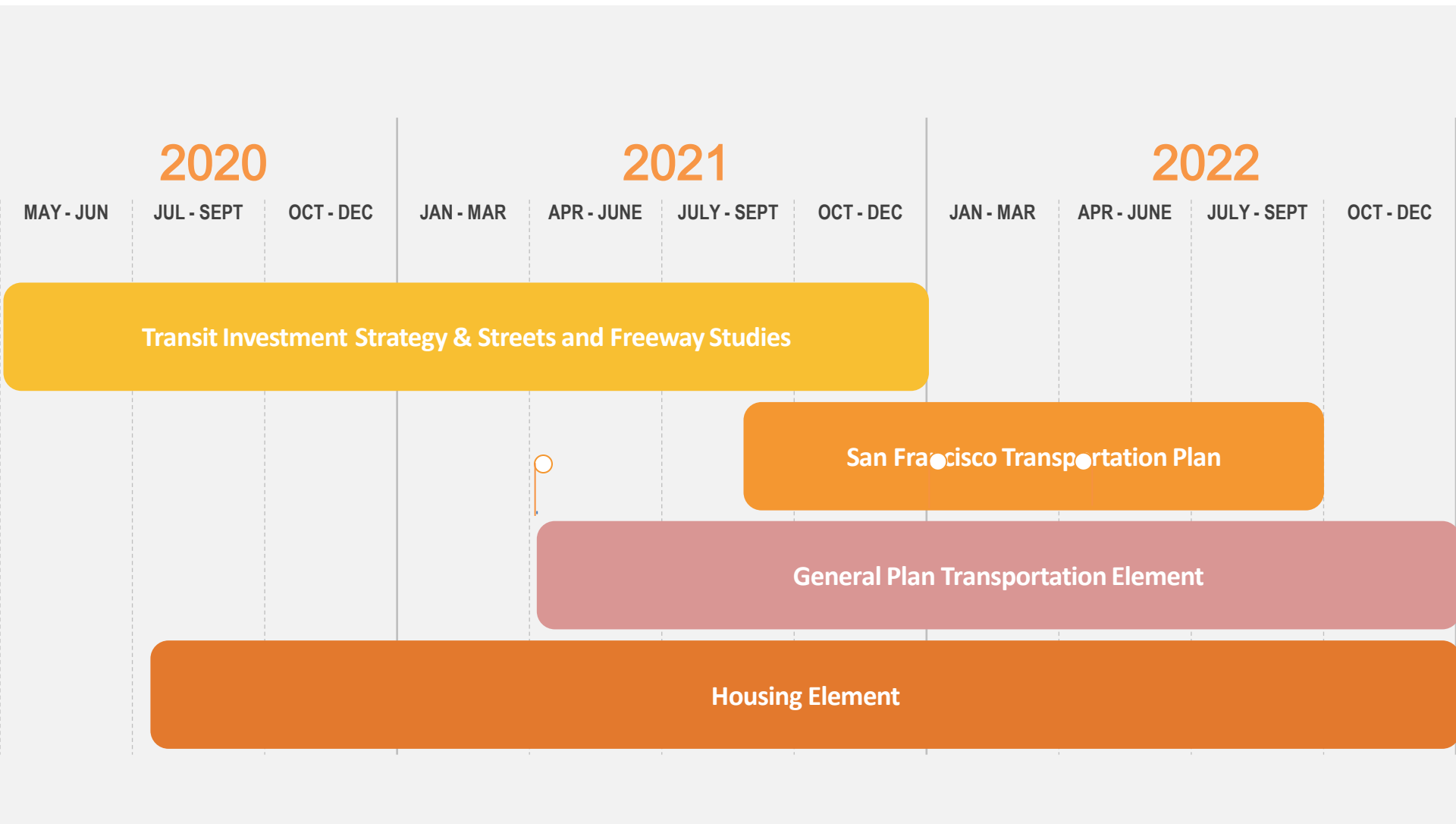
San Francisco  
County Transportation  
Authority

- Climate Action Plan and Electrification
- Equity, Access and Affordability
- Priority Development Areas
- Vision Zero and Safe Routes to School
- New Mobility and Autonomous Vehicles
- Pricing and Demand Management
- Project Delivery





# Combined Schedule



# OFFICE OF RESILIENCE & CAPITAL PLANNING

- ❑ Established 2016: **Merged Office of Resilience and Recovery and Capital Planning Program**
- ❑ **Promote Resilience:** Enable all San Franciscans to recover and thrive no matter the shocks and stresses they face.
- ❑ **Lead policy** and work with other departments to make the San Francisco community more resilient
- ❑ Responsible for **Capital Plan and Budget, Hazards and Climate Resilience Plan Community Action Plan for Seismic Safety, Lifelines Council, and Climate Resilience Coordination (ClimateSF)**



# CAPITAL PLAN

## Building our Future

- **Voters approved \$1.7B in G.O. Bonds since 2019**
  - 2019: **\$600M Affordable Housing**
  - 2020: **\$628.5M Earthquake Safety and Emergency Response** and **\$487.5M Health and Recovery**
- **Promotes local economic stimulus and resilience**
  - **\$125M in Recovery Stimulus** Certificates of Participation (COPs)
  - Near-term **G.O. bonds planned for Transportation, Public Health, and Affordable Housing**
- **Emphasis on Racial Equity** in Capital Plan and Budget
  - Required all departments with capital requests to complete **Racial Equity Lens Survey**
  - Emphasis on how infrastructure serves **BIPOC through better data collection and level of service analysis**



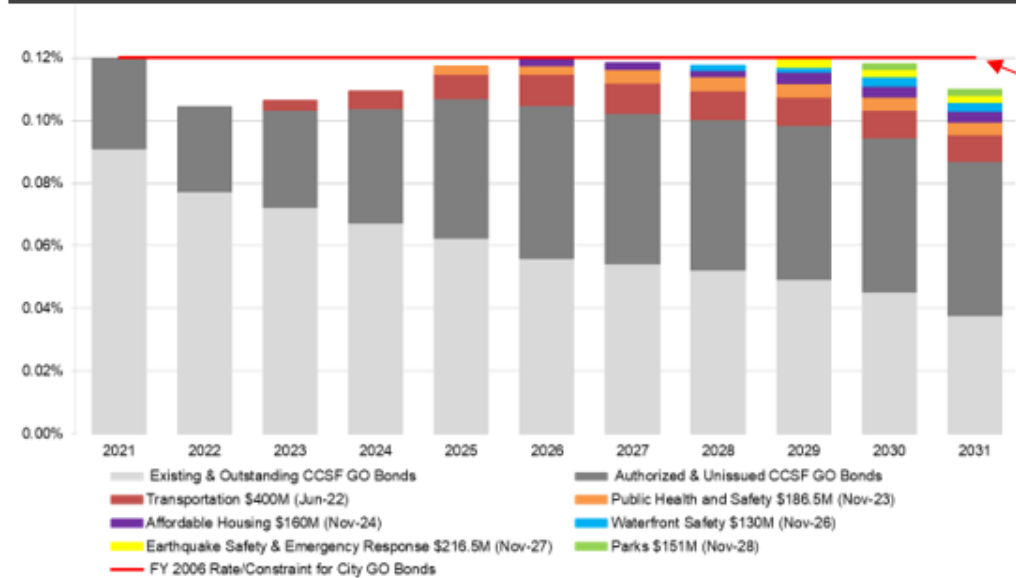
# DEBT PROGRAM

## General Obligation (G.O.) Bond Capacity

### G.O. Bond Debt Program

(in \$millions)

Election	Proposed Program	Amount
Jun 2022	Transportation	400
Nov 2023	Public Health	188
Nov 2024	Affordable Housing	160
Nov 2026	Waterfront Safety	130
Nov 2027	Earthquake Safety & Emergency Response	217
Nov 2028	Parks and Open Space	151
Nov 2031	Public Health	TBD
<b>TOTAL</b>		<b>1,245</b>



Amount of available funds has dropped by 2/3rds

Property tax limit policy represented by the **red line** sets the capacity

# CAPITAL PLAN

## Building our Future

<p><b>Racial and Social Equity</b> Promote equity in the services delivered by the City's facilities and infrastructure.</p>	<p><b>Affordability</b> Preserve and produce affordable housing.</p>	<p><b>Climate Resilience</b> Address the challenges of eliminating GHG emissions and adapting to unavoidable climate impacts.</p>	<p><b>Earthquake Safety</b> Protect communities from the imminent risk of a major earthquake.</p>	<p><b>Infrastructure</b> Take care of the infrastructure we have today and invest in systems that meet the challenges of the future.</p>
--	--	---	---	--

### Highlights

<ul style="list-style-type: none"> <li>• Community health centers</li> <li>• Digital connectivity</li> <li>• Permanent supportive housing</li> </ul> <p>22</p>	<ul style="list-style-type: none"> <li>• New Affordable Housing Chapter</li> <li>• 2019 Affordable Housing Bond</li> <li>• Planned 2024 G.O. Bond</li> </ul>	<ul style="list-style-type: none"> <li>• SLR Guidance in Capital Planning</li> <li>• Ocean Beach</li> <li>• Cleaner air and cooler facilities</li> </ul>	<ul style="list-style-type: none"> <li>• Addressing unsafe bldgs. (SHR4s)</li> <li>• Bond programs             <ul style="list-style-type: none"> <li>- ESER</li> <li>- Public Health HOJ, Pol/FIR</li> <li>- First Responders</li> </ul> </li> </ul>	<ul style="list-style-type: none"> <li>• Seawall</li> <li>• Lifelines Performance</li> <li>• Vision Zero</li> <li>• Planned 2022 Transportation G.O. Bond</li> </ul>
--	--	--	---	--

# CAPITAL PLAN

## Master Plans Provide Future Needs & Proposals



# Discussion

Kansai Uchida, SFMTA

Doug Johnson, Planning

Michelle Beaulieu, SFCTA

Aliza Paz, SFCTA

Brian Strong, Capital Planning