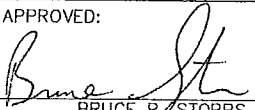


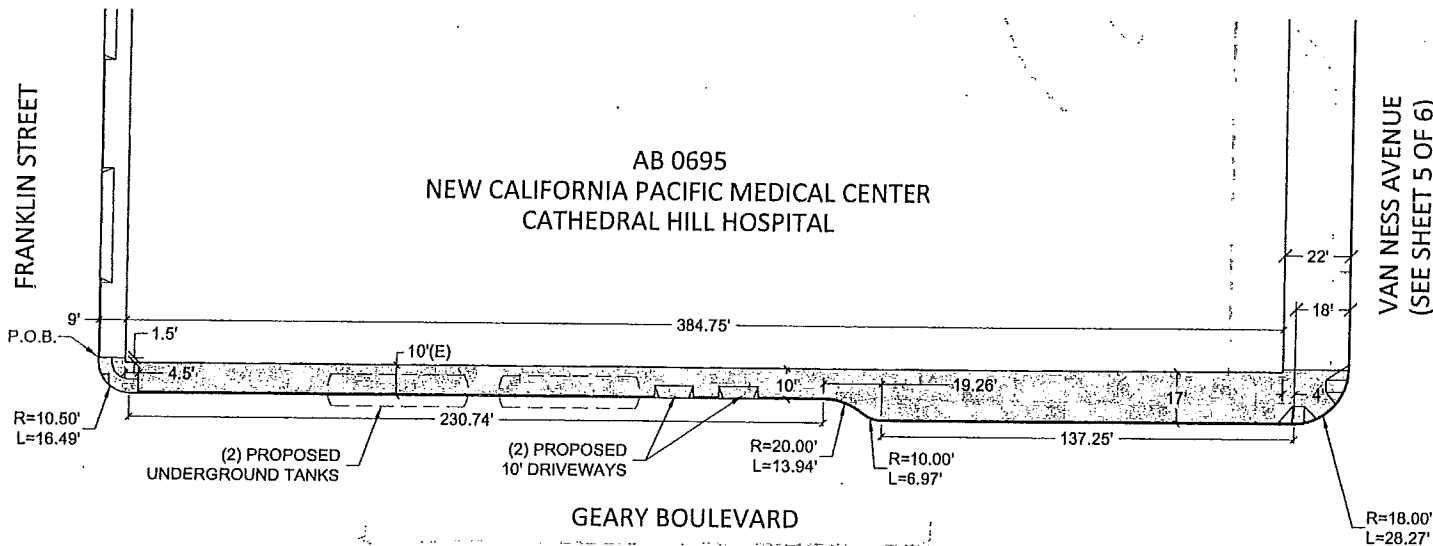
*DRIVEWAY LOCATIONS AND WIDTHS ARE APPROXIMATE.

AB 0695
NEW CALIFORNIA PACIFIC MEDICAL CENTER
CATHEDRAL HILL HOSPITAL

LEGEND

- (E) EXISTING FEATURE DIMENSION
- P.O.B. POINT OF BEGINNING (SEE SHEET 6 FOR MAP CLOSURE INFO)
- PROPOSED NEW CURB LINE
- - - EXISTING CURB LINE TO REMAIN
- - - EXISTING CURB LINE TO BE REMOVED
- PROPERTY LINE

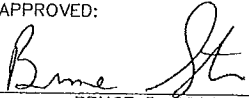
REFERENCES:	APPROVED:	BY	DATE	CITY AND COUNTY OF SAN FRANCISCO					
	 BRUCE R. STORRS CITY & COUNTY SURVEYOR			3/30/12	DEPARTMENT OF PUBLIC WORKS				
					DATE	OFFICIAL SIDEWALK CHANGE ON THE SOUTH SIDE OF POST STREET BETWEEN FRANKLIN STREET AND VAN NESS AVENUE			
						SCALE: 1" : 40'	SHEET 1 OF 6	FILE Q-20-699	CHANGE

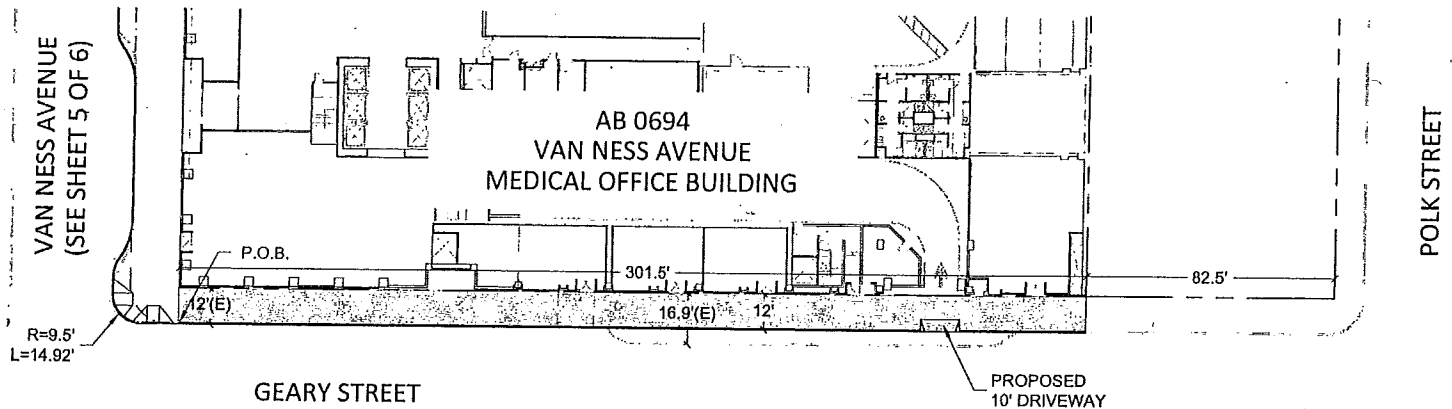


*DRIVEWAY LOCATIONS AND WIDTHS ARE APPROXIMATE.

LEGEND

- (E) EXISTING FEATURE DIMENSION
- P.O.B. POINT OF BEGINNING (SEE SHEET 6 FOR MAP CLOSURE INFO)
- PROPOSED NEW CURB LINE
- - - EXISTING CURB LINE TO REMAIN
- - - EXISTING CURB LINE TO BE REMOVED
- - - PROPERTY LINE

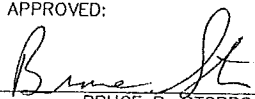
REFERENCES:	APPROVED:	BY	DATE	CITY AND COUNTY OF SAN FRANCISCO				
	 BRUCE R. STORRS CITY & COUNTY SURVEYOR			3/30/12	DRW	DEPARTMENT OF PUBLIC WORKS		
						DATE	CK	OFFICIAL SIDEWALK CHANGE ON THE NORTH SIDE OF GEARY BOULEVARD BETWEEN FRANKLIN STREET AND VAN NESS AVENUE
		APP		SCALE: 1" : 40'	SHEET 2 OF 6	FILE Q-20-699	CHANGE	

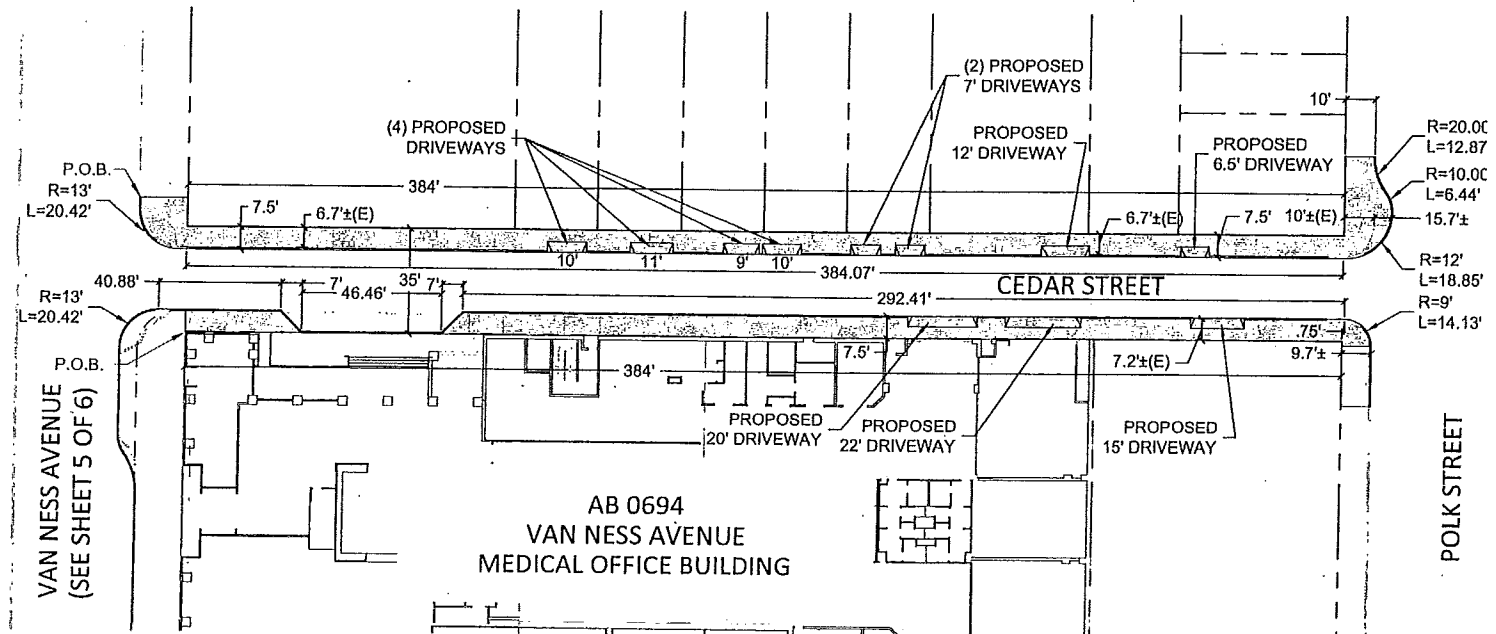


*DRIVEWAY LOCATIONS AND WIDTHS ARE APPROXIMATE.

LEGEND

- (E) EXISTING FEATURE DIMENSION
- P.O.B. POINT OF BEGINNING (SEE SHEET 6 FOR MAP CLOSURE INFO)
- PROPOSED NEW CURB LINE
- - - EXISTING CURB LINE TO REMAIN
- EXISTING CURB LINE TO BE REMOVED
- - - **EXISTING LEGISLATED CURB LINE
- - - EXISTING LIP OF GUTTER LINE
- PROPERTY LINE

REFERENCES:	APPROVED:	BY	DATE	CITY AND COUNTY OF SAN FRANCISCO			
	 BRUCE R. STORRS CITY & COUNTY SURVEYOR			DEPARTMENT OF PUBLIC WORKS			
		3/30/17		OFFICIAL SIDEWALK CHANGE ON THE NORTH SIDE OF GEARY STREET BETWEEN VAN NESS AVENUE AND POLK STREET			
		DATE		SCALE: 1" = 40'	SHEET 3 OF 6	FILE Q-20-699	CHANGE



LEGEND

- (E) EXISTING FEATURE DIMENSION
- P.O.B. POINT OF BEGINING (SEE SHEET 6 FOR MAP CLOSURE INFO)
- PROPOSED NEW CURB LINE
- - - EXISTING CURB LINE TO REMAIN
- - - EXISTING CURB LINE TO BE REMOVED
- - - **EXISTING LEGISLATED CURB LINE
- - - EXISTING LIP OF GUTTER LINE
- - - PROPERTY LINE

REFERENCES:

APPROVED:

Bruce R. Storrs
 BRUCE R. STORRS
 CITY & COUNTY SURVEYOR

3/20/12

DATE

BY

DATE

DRW

CK

APP

CITY AND COUNTY OF SAN FRANCISCO
 DEPARTMENT OF PUBLIC WORKS

OFFICIAL SIDEWALK CHANGE ON THE NORTH AND SOUTH SIDE OF CEDAR STREET
 BETWEEN VAN NESS AVENUE AND POLK STREET

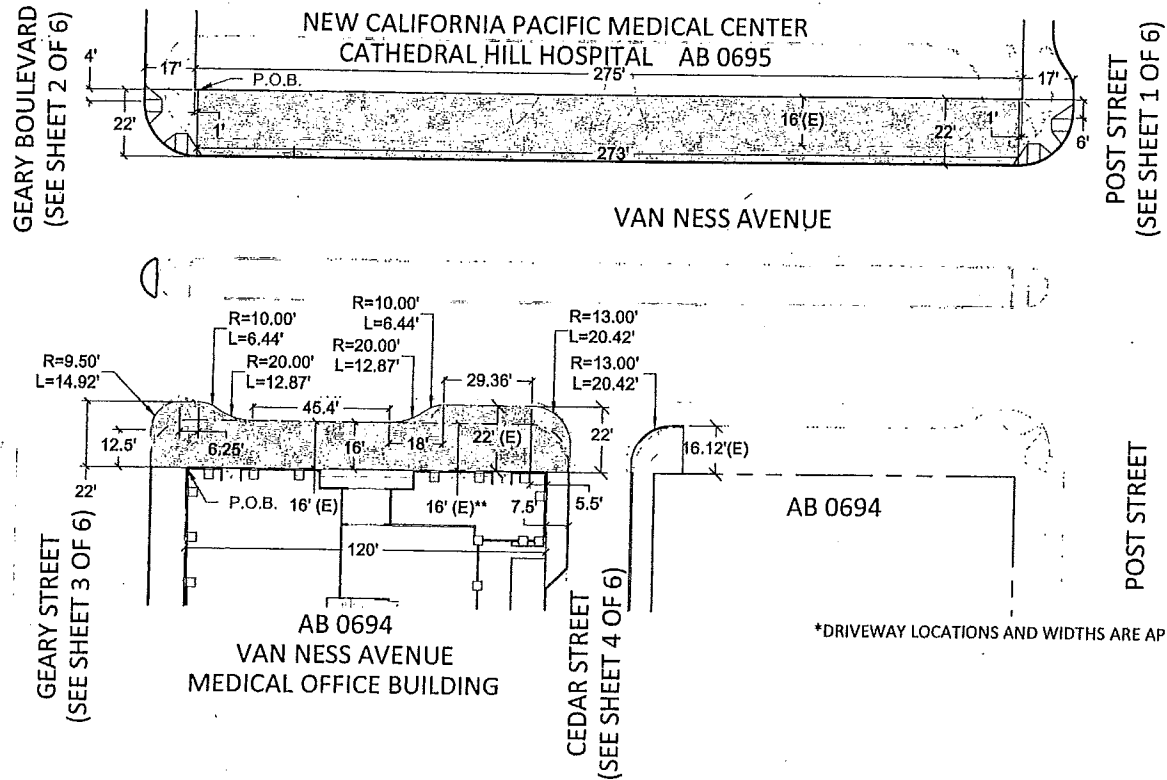
SCALE:
 1" : 40'

SHEET
 4 OF 6

FILE

Q-20-699

CHANGE



LEGEND

- (E) EXISTING FEATURE DIMENSION
- P.O.B. POINT OF BEGINING (SEE SHEET 6 FOR MAP CLOSURE INFO)
- PROPOSED NEW CURB LINE
- EXISTING CURB LINE TO REMAIN
- - - EXISTING CURB LINE TO BE REMOVED
- - - **EXISTING LEGISLATED CURB LINE
- - - EXISTING LIP OF GUTTER LINE
- PROPERTY LINE

REFERENCES:	APPROVED:	BY		DATE	CITY AND COUNTY OF SAN FRANCISCO DEPARTMENT OF PUBLIC WORKS			
	 BRUCE R. STORRS CITY & COUNTY SURVEYOR				OFFICIAL SIDEWALK CHANGE ON THE EAST AND WEST SIDE OF VAN NESS AVENUE BETWEEN GEARY AND POST STREET			
		3/20/12	DRW			SCALE: 1" : 40'	SHEET 5 OF 6	FILE Q-20-699
		DATE	CK					
			APP					

PROJECT: 105069_Sidewalks

DESCRIPTION: Cathedral Hill and Van Ness

MAP-CHECK CLOSURE FOR: 01 POST STREET SIDEWALK SOUTH

TOTAL # OF COURSES: 14

COURSE #1 DELTA: 90°00'00" RADIUS: 23.00' ARC LENGTH: 36.13'
 COURSE #2 BEARING: N 90°00'00" E LENGTH: 216.18'
 COURSE #3 DELTA: 39°56'40" RADIUS: 10.00' ARC LENGTH: 6.97'
 COURSE #4 DELTA: 39°56'40" RADIUS: 20.00' ARC LENGTH: 13.94'
 COURSE #5 BEARING: S 90°00'00" W LENGTH: 112.98'
 COURSE #6 DELTA: 39°56'40" RADIUS: 20.00' ARC LENGTH: 13.94'
 COURSE #7 DELTA: 39°56'40" RADIUS: 10.00' ARC LENGTH: 6.97'
 COURSE #8 BEARING: N 90°00'00" E LENGTH: 7.07'
 COURSE #9 DELTA: 89°55'00" RADIUS: 18.01' ARC LENGTH: 28.26'
 COURSE #10 BEARING: S 90°00'00" W LENGTH: 22.00'
 COURSE #11 BEARING: N 00°00'00" E LENGTH: 1.00'
 COURSE #12 BEARING: N 90°00'00" W LENGTH: 384.75'
 COURSE #13 BEARING: S 00°00'00" W LENGTH: 6.00'
 COURSE #14 BEARING: N 90°00'00" W LENGTH: 9.00'
 PERIMETER: 865.19' AREA: 6018 SF, 0.14 AC
 ERROR OF CLOSURE: S 46°09'23" E 0.009'
 PRECISION: 1 IN 94978

MAP-CHECK CLOSURE FOR: 02 GEARY BOULEVARD SIDEWALK NORTH

TOTAL # OF COURSES: 12

COURSE #1 BEARING: S 90°00'00" E LENGTH: 9.00'
 COURSE #2 BEARING: S 00°00'00" W LENGTH: 1.50'
 COURSE #3 BEARING: N 90°00'00" E LENGTH: 384.75'
 COURSE #4 BEARING: N 00°00'00" E LENGTH: 1.00'
 COURSE #5 BEARING: N 90°00'00" E LENGTH: 22.00'
 COURSE #6 DELTA: 90°00'00" RADIUS: 18.00' ARC LENGTH: 28.27'
 COURSE #7 BEARING: N 90°00'00" W LENGTH: 137.25'
 COURSE #8 DELTA: 39°56'40" RADIUS: 10.00' ARC LENGTH: 6.97'
 COURSE #9 DELTA: 39°56'40" RADIUS: 20.00' ARC LENGTH: 13.94'
 COURSE #10 BEARING: S 90°00'00" W LENGTH: 230.74'
 COURSE #11 DELTA: 89°59'14" RADIUS: 10.50' ARC LENGTH: 16.48'
 COURSE #12 BEARING: N 00°00'00" E LENGTH: 1.00'
 PERIMETER: 852.91' AREA: 5246 SF, 0.12 AC
 ERROR OF CLOSURE: N 17°22'17" E 0.004'
 PRECISION: 1 IN 217649

MAP-CHECK CLOSURE FOR: 03 GEARY STREET SIDEWALK NORTH

TOTAL # OF COURSES: 4

COURSE #1 BEARING: N 00°00'00" E LENGTH: 12.00'
 COURSE #2 BEARING: N 90°00'00" E LENGTH: 301.50'
 COURSE #3 BEARING: S 00°00'00" W LENGTH: 12.00'
 COURSE #4 BEARING: S 90°00'00" W LENGTH: 301.50'
 PERIMETER: 627.00' AREA: 3618 SF, 0.08 AC
 ERROR OF CLOSURE: S 00°00'00" W 0.000'
 PRECISION: 1 IN 1000000

MAP-CHECK CLOSURE FOR: 04 CEDAR STREET SIDEWALK NORTH

TOTAL # OF COURSES: 12

COURSE #1 BEARING: N 90°00'00" E LENGTH: 16.12'
 COURSE #2 BEARING: S 00°00'00" W LENGTH: 9.23'
 COURSE #3 BEARING: N 90°00'00" E LENGTH: 384.00'
 COURSE #4 BEARING: N 00°00'00" E LENGTH: 26.03'
 COURSE #5 BEARING: N 90°00'00" E LENGTH: 9.95'
 COURSE #6 DELTA: 36°52'12" RADIUS: 20.00' ARC LENGTH: 12.87'
 COURSE #7 DELTA: 36°52'12" RADIUS: 10.00' ARC LENGTH: 6.44'
 COURSE #8 BEARING: S 00°00'00" W LENGTH: 0.73'
 COURSE #9 DELTA: 90°00'00" RADIUS: 15.00' ARC LENGTH: 23.56'
 COURSE #10 BEARING: N 90°00'00" W LENGTH: 388.06'
 COURSE #11 DELTA: 90°00'27" RADIUS: 13.00' ARC LENGTH: 20.42'
 COURSE #12 BEARING: N 00°00'27" E LENGTH: 3.93'
 PERIMETER: 901.34' AREA: 3622 SF, 0.08 AC
 ERROR OF CLOSURE: S 40°29'29" W 0.014'
 PRECISION: 1 IN 66357

MAP-CHECK CLOSURE FOR: 05 CEDAR STREET SIDEWALK SOUTH

TOTAL # OF COURSES: 10

COURSE #1 BEARING: N 00°00'00" E LENGTH: 7.50'
 COURSE #2 BEARING: N 90°00'00" E LENGTH: 31.88'
 COURSE #3 BEARING: S 45°00'00" E LENGTH: 9.90'
 COURSE #4 BEARING: N 90°00'00" E LENGTH: 46.46'
 COURSE #5 BEARING: N 45°00'00" E LENGTH: 9.90'
 COURSE #6 BEARING: N 90°00'00" E LENGTH: 292.41'
 COURSE #7 DELTA: 89°56'06" RADIUS: 9.00' ARC LENGTH: 14.13'
 COURSE #8 BEARING: N 90°00'00" W LENGTH: 9.75'
 COURSE #9 BEARING: N 00°00'00" E LENGTH: 1.49'
 COURSE #10 BEARING: N 90°00'00" W LENGTH: 384.00'
 PERIMETER: 807.42' AREA: 2576 SF, 0.06 AC
 ERROR OF CLOSURE: S 17°12'58" W 0.001'
 PRECISION: 1 IN 1086259

MAP-CHECK CLOSURE FOR: 06 VAN NESS AVENUE SIDEWALK WEST

TOTAL # OF COURSES: 4

COURSE #1 BEARING: N 00°00'00" E LENGTH: 273.00'
 COURSE #2 BEARING: N 90°00'00" E LENGTH: 22.00'
 COURSE #3 BEARING: S 00°00'00" W LENGTH: 273.00'
 COURSE #4 BEARING: S 90°00'00" W LENGTH: 22.00'
 PERIMETER: 590.00' AREA: 6006 SF, 0.14 AC
 ERROR OF CLOSURE: S 00°00'00" W 0.000'
 PRECISION: 1 IN 1000000

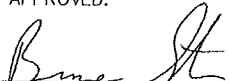
MAP-CHECK CLOSURE FOR: 07 VAN NESS AVENUE SIDEWALK EAST

TOTAL # OF COURSES: 14

COURSE #1 BEARING: S 00°00'00" W LENGTH: 12.00'
 COURSE #2 BEARING: N 90°00'00" W LENGTH: 12.50'
 COURSE #3 DELTA: 90°00'00" RADIUS: 9.50' ARC LENGTH: 14.92'
 COURSE #4 BEARING: N 00°00'00" E LENGTH: 6.25'
 COURSE #5 DELTA: 36°52'12" RADIUS: 10.00' ARC LENGTH: 6.44'
 COURSE #6 DELTA: 36°52'12" RADIUS: 20.00' ARC LENGTH: 12.87'
 COURSE #7 BEARING: N 00°00'00" E LENGTH: 45.40'
 COURSE #8 DELTA: 36°52'12" RADIUS: 20.00' ARC LENGTH: 12.87'
 COURSE #9 DELTA: 36°52'12" RADIUS: 10.00' ARC LENGTH: 6.44'
 COURSE #10 BEARING: N 00°00'00" E LENGTH: 29.36'
 COURSE #11 DELTA: 90°00'00" RADIUS: 13.00' ARC LENGTH: 20.42'
 COURSE #12 BEARING: N 90°00'00" E LENGTH: 9.00'
 COURSE #13 BEARING: S 00°00'00" W LENGTH: 7.50'
 COURSE #14 BEARING: S 00°00'00" W LENGTH: 120.00'
 PERIMETER: 315.97' AREA: 2620 SF, 0.06 AC
 ERROR OF CLOSURE: S 65°15'23" E 0.008'
 PRECISION: 1 IN 41589

REFERENCES:

APPROVED:


 BRUCE R. STORRS
 CITY & COUNTY SURVEYOR

3/31/12

DATE

BY

DATE

DRW

CK

APP

CITY AND COUNTY OF SAN FRANCISCO
 DEPARTMENT OF PUBLIC WORKS

SIDEWALK LEGISLATION -- SIDEWALK MAP CHECK CLOSURES

SCALE:
1" : 40'

SHEET
6 OF 6

FILE

Q-20-699

CHANGE