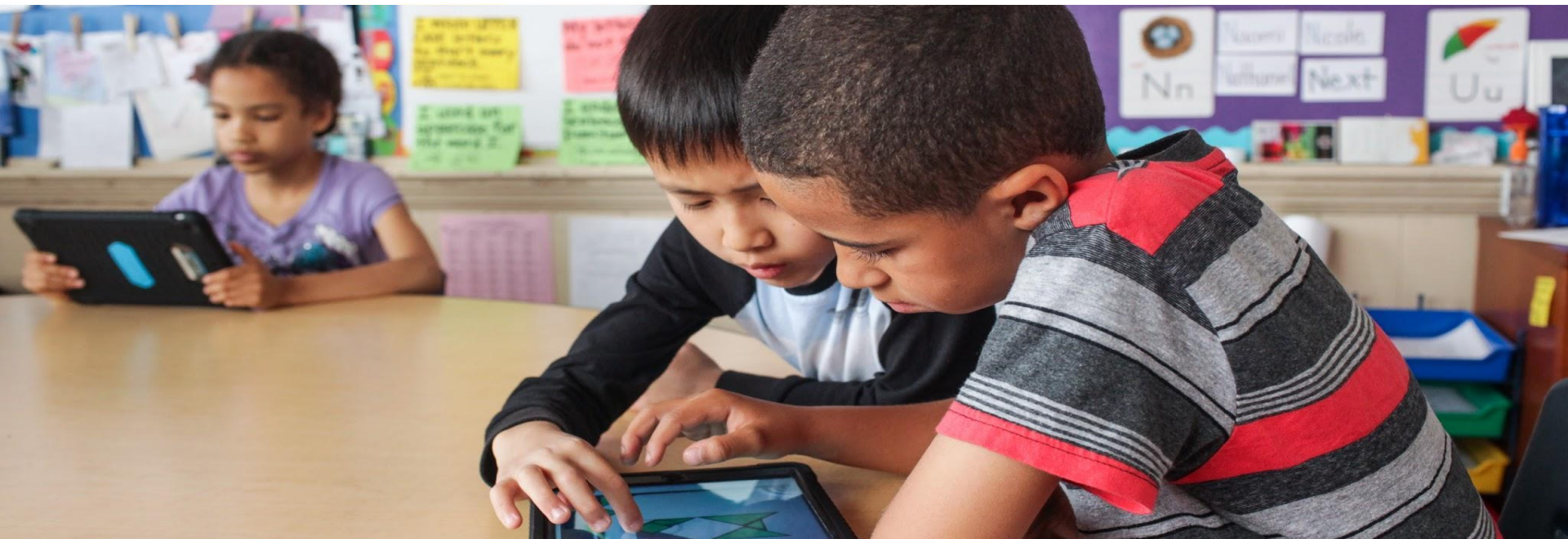




SFUSD SAN FRANCISCO
PUBLIC SCHOOLS

SF Board of Supervisors Youth, Young Adults, and Families Committee



Special Education
Finances and Trends
April 8, 2022



Special Education Mission

- The Special Education Department is committed to providing innovative, effective services resulting in positive outcomes for the life-long success of students.
- In compliance with State and Federal regulations, specially designed instruction and related services are designed to meet the individual needs of students eligible for a “Free and Appropriate Education,” (FAPE) as outlined in each student’s Individual Education Program (IEP).

Facts

- **SFUSD Special Education Budget: \$160M**
~16% of District Budget
SpEd is ~ 13% of enrollment
- **11 % increase in SpEd Teacher Sick Pay;**
8% district-wide
- SpEd teachers use an average of **65% of Prop G hours;** it is 68% district-wide
- 2/3 teachers in SpEd are on substandard credentials statewide
- 120 /477 SpEd teachers are on intern or emergency credentials

Voices from our Community ³

This school is all new teachers; it's really hard when you have all new staff.

We need more money. There isn't enough budget to do things.

We have such high staff absences; without staff, sometimes we have a free day for the kids

We need more staff; we want training and support.



Local, State and Federal Drivers

LOCAL

SFUSD cannot sustain the trajectory of current practices in SpEd...

- 23-24 UGF contribution could reach \$145M
 - 18-19 was \$82M (+76%)
 - 20-21 was \$124M
- Service levels currently vary
 - Caseloads range from 9-22 / avg 16 (RSP) and 5-12 / avg 10 (SDC)

STATE

...and current practices do not adequately meet the needs of students.

- Targets for achievement ELA (>14.9%) and Math (>12.6%) are not met
- Targets for participation ELA and Math are not met
- SFUSD is sig-dispro
- Some IEPs are noncompliant

FEDERAL

Providing educational benefit is more meaningful now than it has been in the past.

- In the *Endrew F. v. Douglas County SD*, the Supreme Court redefined the standard for educational benefit
- *"...requires an educational program reasonably calculated to enable a child to make progress appropriate in light of the child's circumstances"*

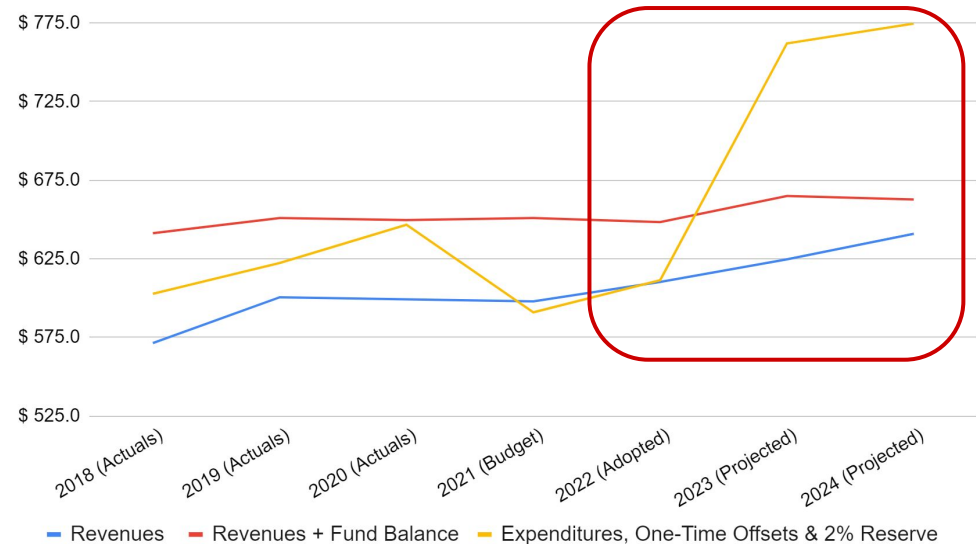
SFUSD Budget Outlook

FY 2022- 2023 and FY 2023-2024

(Before balancing plan)

- ❖ One-time federal and state funding were used to address a \$100M deficit in FY 2021-22 Unrestricted General Fund (UGF) to maintain stability for students and staff
- ❖ Deficits of \$125M in FY 22-23 and \$143M in FY 23-24 were projected due to loss of one-time funds and growing expenses
- ❖ The Board of Education has adopted a balancing plan to address these deficits

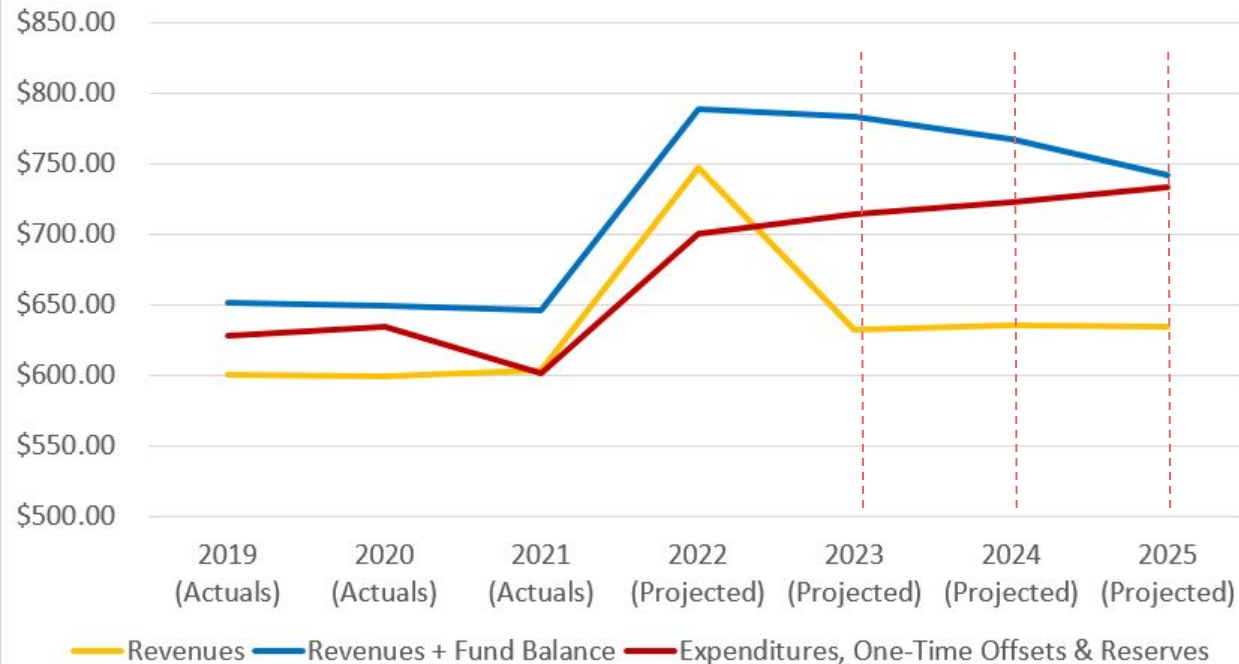
Unrestricted General Fund: Historical & Projected Trends (\$ millions)



Budget Context

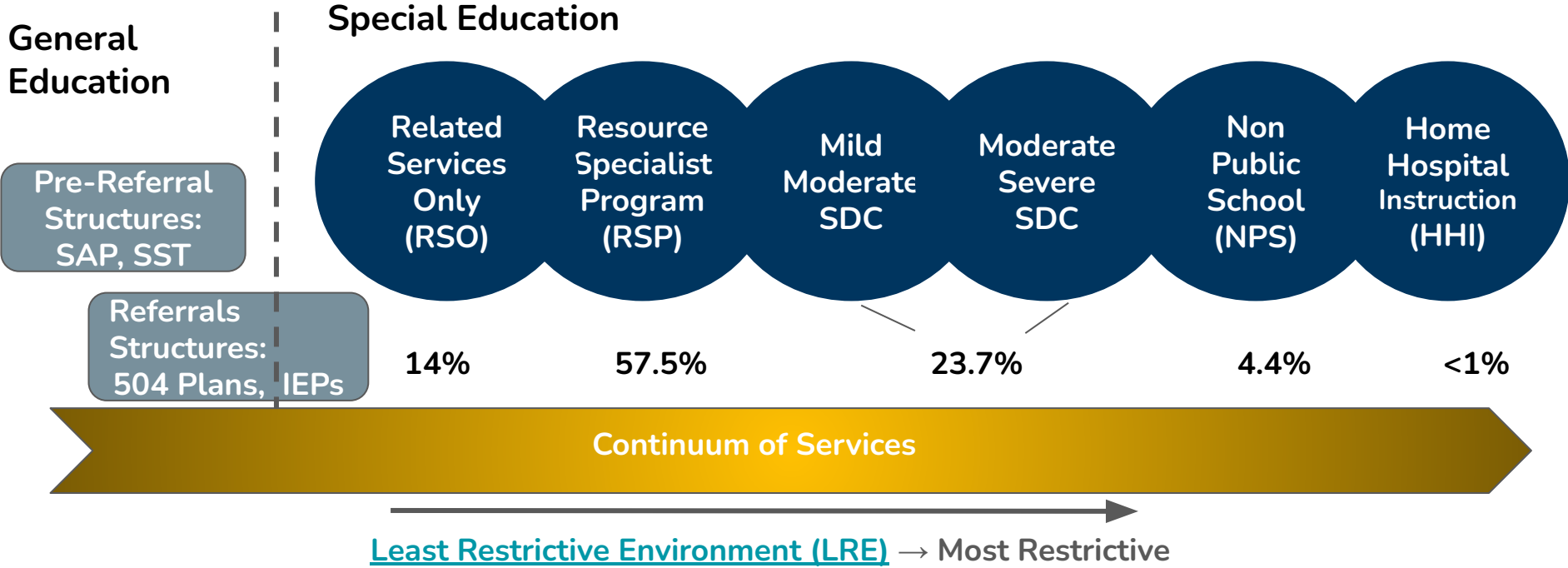
Current Multi-Year Projections

Unrestricted General Fund
Historical and Projected (\$ millions)

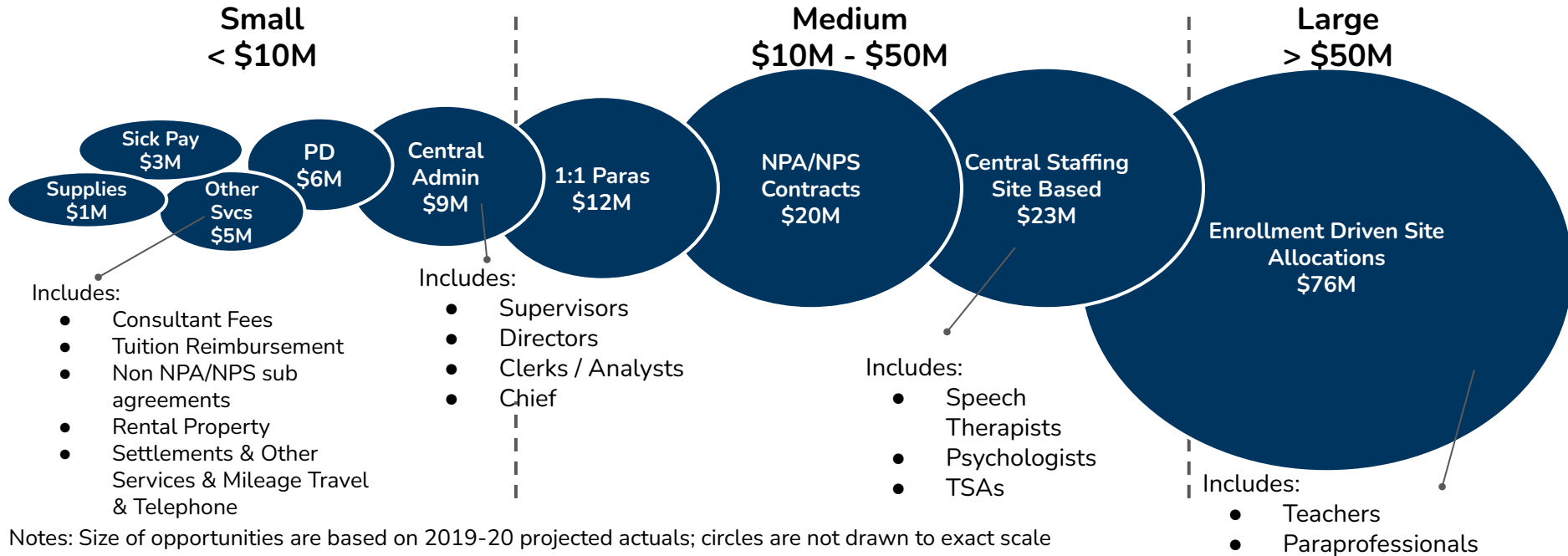


- ❖ Even with a balancing plan in place, District expenditure growth will outpace revenues, particularly in the context of declining enrollment
- ❖ The District will deficit spend over the next few years, drawing down our currently substantial reserves and face another budget shortfall in FY 2025-26
- ❖ Should the Governor's May Revise identify new revenues, we must take that improvement in account within the larger picture of our structural budget deficit
- ❖ New investments should be made in areas that address other structural concerns, such as cost of living for our employees

All SpEd students are GenEd students first



Special Education Resource Allocations



Achieving Resource Efficacy

Fully Leverage General Education

Related
Services
Only
(RSO)

Resource
Specialist
Program
(RSP)

Mild
Moderate
SDC

Moderate
Severe
SDC

Non
Public
School
(NPS)

Home
Hospital
Instruction
(HHI)

Align accountability and decision-making

Develop clarity
and
understanding
results
towards
strategic
responses
districtwide

Together we can...

- **Strong and growing alignment w/ our community members** including parent advisory groups including the Special Education Community Advisory Committee (CAC), Parent Advisory Committee, (PAC), District English Language Advisory Committee (DELAC), African American Parent Advisory Committee ((AAPAC), Mission Moms and Labor Partners
- **Legislative Action Day (May 4)** each Spring, group effort w/ community partners, SELPA colleagues, CAC and SFUSD Staff including SPED, UESF and UASF reps.
- **Active Membership** in the Special Education Local Plan Area (SELPA) Network, Coalition for Adequate Funding for Special Education (CAFSE), Urban Collaborative, Special Education Administrators of County Offices (SEACO), ++
- **Consistently growing relationships and alignment in our local community** including partnerships with local Universities, Hospitals, various CBOs, Mayor's Office on Disabilities, UCSF Dyslexia Project, SFDPF, DCYF, ++

Special Education Services

San Francisco Unified School District



“It is clear that COVID-19 has launched us into a new era for education. If we get it wrong, we risk widening opportunity and achievement gaps in ways that will have long-standing impacts on our society and economy. But, if we get this right, we may be able to finally achieve the empowering and equitable learning opportunities for all children that will provide the foundation for a thriving future for us all.”

- Linda Darling Hammond