



**HIV HEALTH SERVICES
PRESENTED TO
BOARD OF SUPERVISORS
BUDGET & FINANCE COMMITTEE**

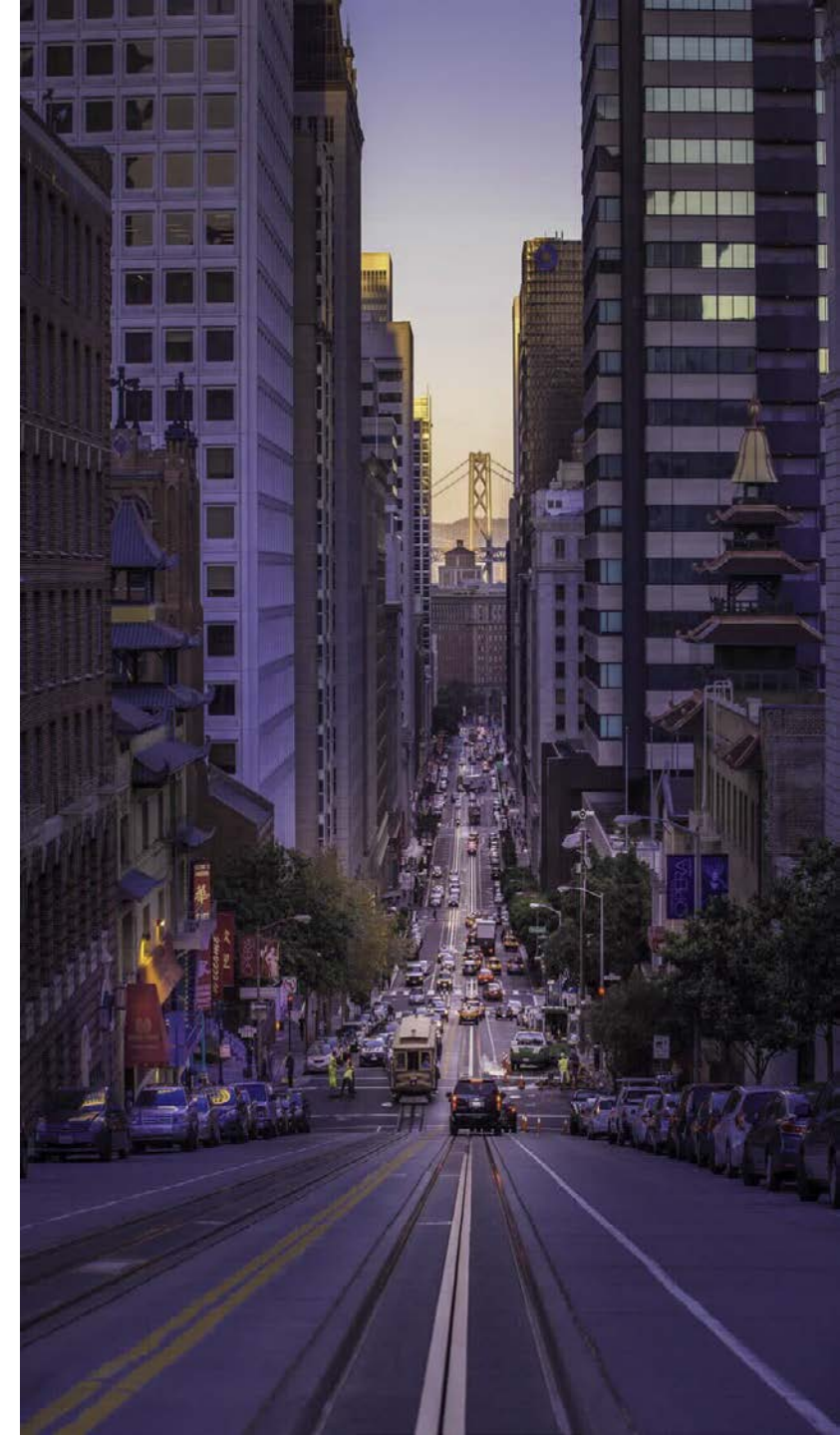
BILL BLUM, HHS DIRECTOR
TRACEY PACKER, CHEP DIRECTOR
DEAN GOODWIN, ASSISTANT HHS DIRECTOR

NOVEMBER 18, 2020

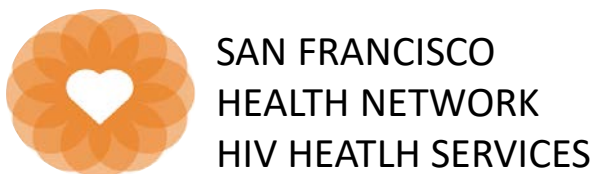


PRESENTATION SUMMARY

- 1. HIV Health Services, Community Equity & Promotion and Disease Prevention and Control– Scopes, Roles, & Coordination**
- 2. HIV within the Latino/a/x community**
- 3. HIV in the Black & African American community – specifically women**
- 4. HIV testing and STD Services**
- 5. Cross-Bay collaboration with Alameda County**



HIV Health Services (HHS), Community Health Equity & Promotion (CHEP) & Disease Prevention and Control (DPC)



HIV Health Services	Community Health Equity and Promotion	Disease Prevention & Control	SHARED
<ul style="list-style-type: none"> • Federal HRSA-HAB grantee for Ryan White funding • HIV Primary Care, Core, & Support Services for HIV-positive San Francisco Residents 	<ul style="list-style-type: none"> • Federal CDC grantee for HIV prevention • HIV Testing & Linkage • Pre-Exposure Prophylaxis • Syringe Access & Disposal Services 	<ul style="list-style-type: none"> • Federal CDC grantee for HIV and STI prevention • LINCS team (citywide HIV linkage and navigation services) • SF City Clinic <ul style="list-style-type: none"> • PrEP • Rapid ART and HIV primary care 	<ul style="list-style-type: none"> • HIV Community Planning Council • Getting To Zero Consortium • Ending the HIV/HCV/STI Epidemics • Both HRSA and CDC funding

HIV WITHIN THE LATINO/A/X COMMUNITY

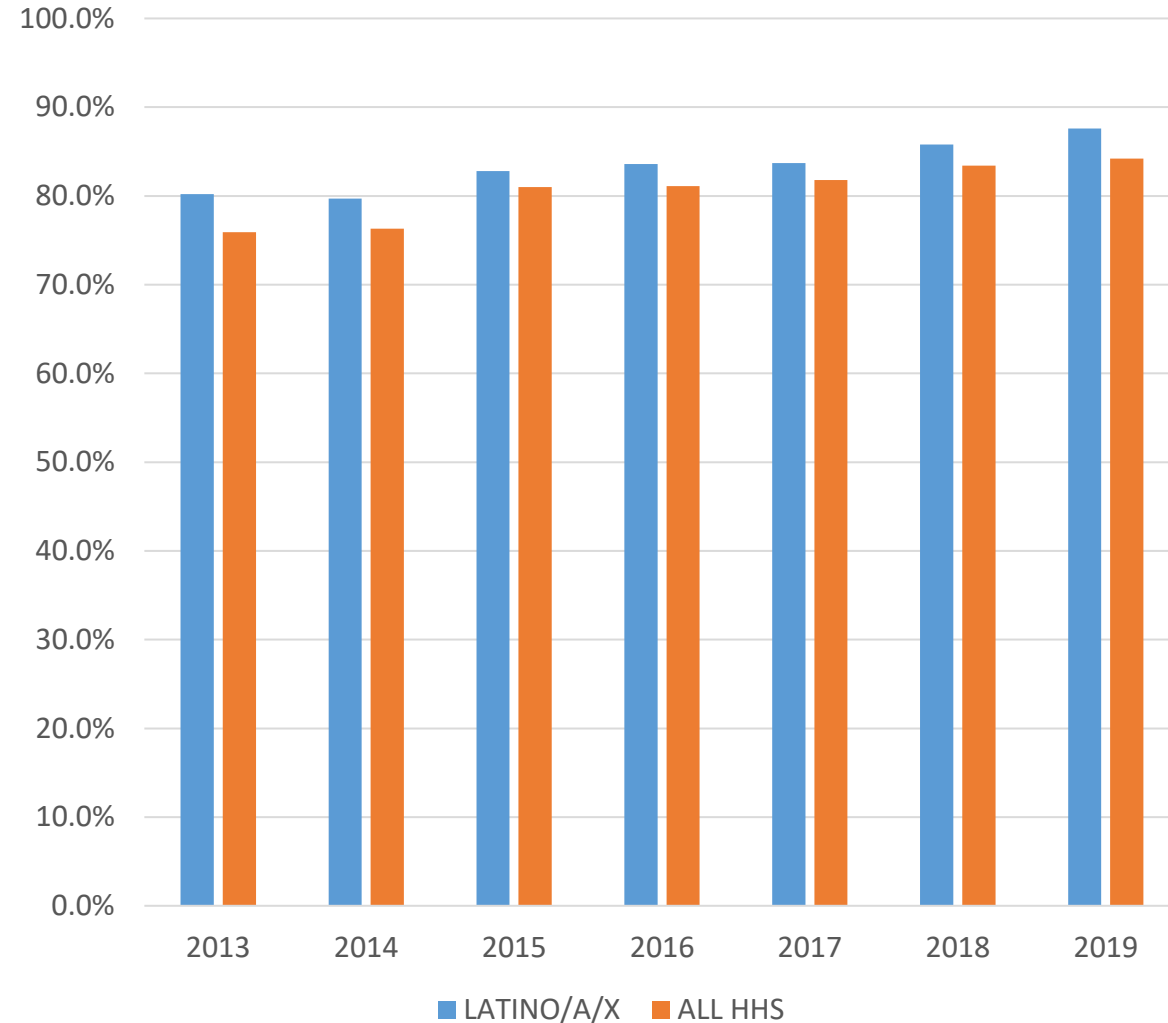


Castro Mission Health Center

MNHC, IFR, AGUILAS, MISSION WELLNESS PHARMACY & CMHC PROVIDE:

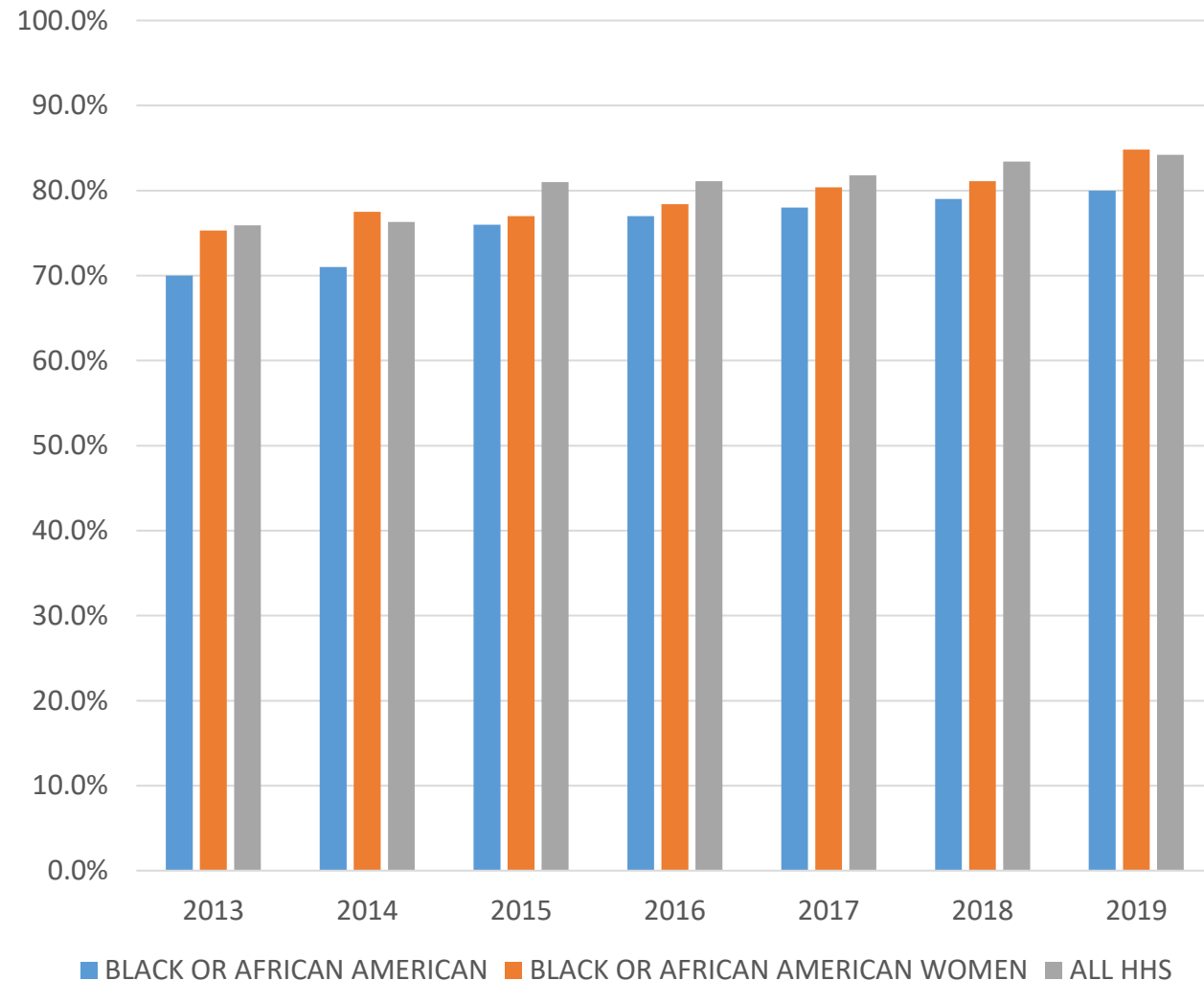
- Center of Excellence Services
- Primary Medical Care
- Medical Case Management
- Mental Health Services
- Substance Use Services
- Outreach / Peer Advocacy
- Testing & Linkage
- Pre-Exposure Prophylaxis

VIRAL SUPPRESSION - Data from ARIES 11/16/2020



HIV IN BLACK/AFRICAN AMERICAN WOMEN (1 OF 3)

VIRAL SUPPRESSION: Data from ARIES 11/16/2020



The Black and African American community within the HHS system of care report a viral suppression rate of 80% (N=1,162), lower than other race/ethnicity groups, but **Black and African American women (N=223) have higher rates than men and higher rates than the average of all race/ethnicities total.**

- American Indian or Native Alaska – 86% (N=73)
- Asian – 92% (N=327)
- Hispanic or Latino/a – 87% (N=1,491)
- Native Hawaiian or Pacific Islander – 87% (N=31)
- White – 84% (N=2,114)

Viral suppression rates have risen steadily in all groups including Black/AA women.

HIV IN BLACK/AFRICAN AMERICAN WOMEN (2 OF 3)



HHS provides Black & African American-focused services including:

Programs

- Black Health Center of Excellence
- Women's Center of Excellence
- Rafiki Coalition
- HIVE
- CATS (DBA Community Forward SF)
- City Clinic



HEALTH OUTCOMES IN BLACK & AFRICAN AMERICAN WOMEN (3 OF 3)

HIV Prevention, Testing and Linkage Services:

Targeted community-based testing

Mobile outreach and testing (encampments, Safe Sleeping Sites, street-based, etc.)

Holistic “Special Project” for Black/African/American MSM

- Full spectrum of services
- Outreach, engagement, testing, referral to PrEP or HIV/HCV/STI treatment and medication maintenance for clients on PrEP or PLWH

Ending the Epidemics: **Developing a regional PrEP approach**

- Address PrEP disparities, particularly among B/AA
- Provide a coordinated, diverse, cross-jurisdictional interventions to support PrEP uptake in SF and Alameda Counties

The Sistas Leadership for African American Youth (SLAY) Council to address disproportionately high STD/STI rates among Black/African American young women

Youth United Through Health Education (YUTHE)

Syphilis Working Group to address congenital syphilis

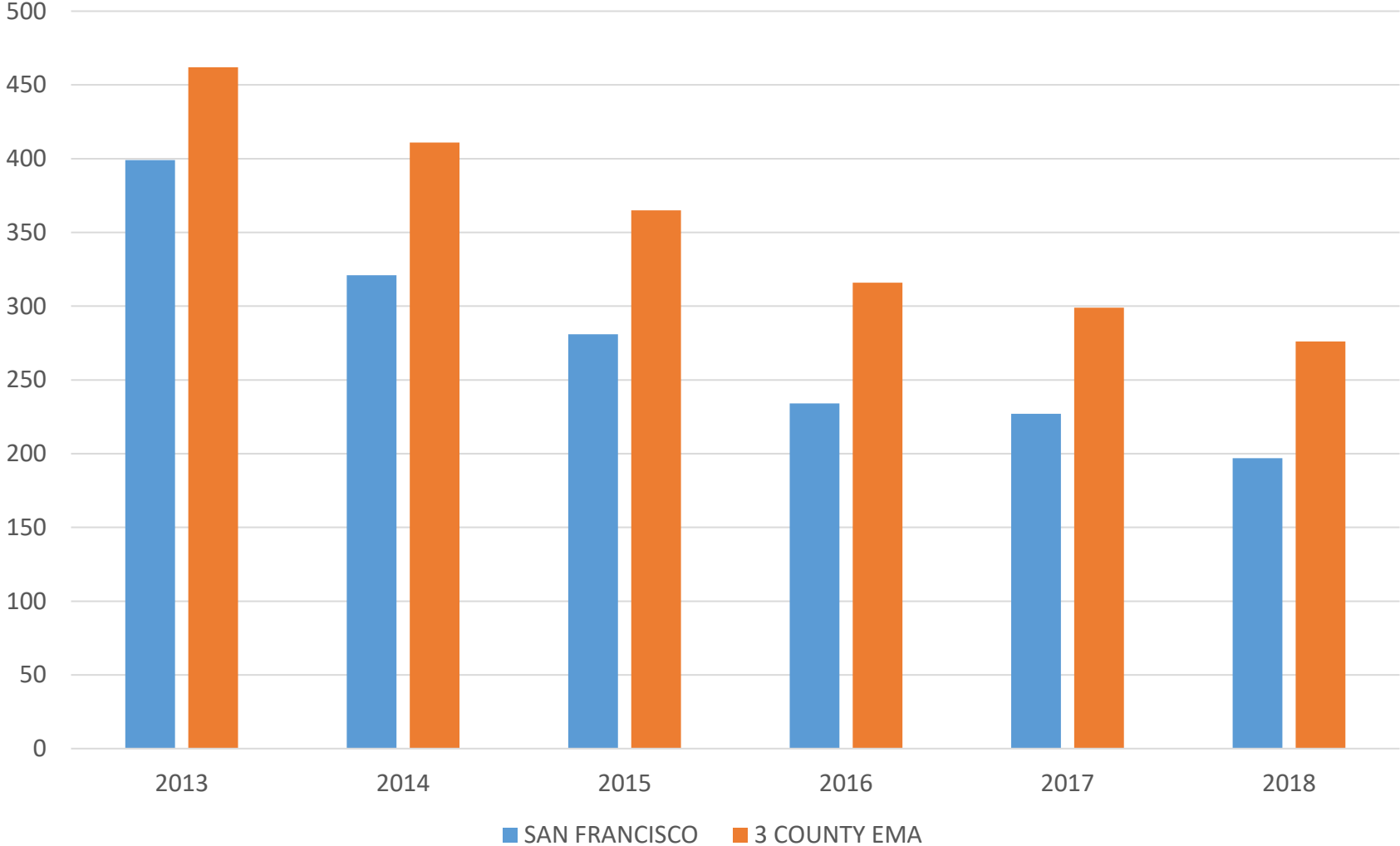
HIV TESTING

Group / Exposure Category	New Diagnosed HIV Cases 1/1/18 - 12/31/18		Persons Living with HIV as of 12/31/18	
	Number	%	Number	%
Total	322	100%	14,960	100%
Current gender				
Female	28	8.7%	1,002	6.7%
Male	285	88.5%	13,563	90.7%
Transgender	9	2.8%	395	2.6%
Age group at diagnosis (years)				
0 - 12	0	0.0%	4	0.0%
13 - 24	45	14.0%	159	1.1%
25 - 44	192	59.6%	3,893	26.0%
45 - 64	78	24.2%	8,737	58.4%
65 and Over	7	2.2%	2,167	14.5%
Race / Ethnicity				
Black / African American	53	16.5%	1,859	12.4%
Latino / Hispanic	124	38.5%	3,529	23.6%
Asian / Pacific Islander	41	12.7%	1,098	7.3%
White (not Hispanic)	95	29.5%	7,897	52.8%
Other / Multiethnic / Unknown	9	2.8%	577	3.9%
Transmission category				
Male-to-male sexual contact (MSM)	218	67.7%	10,818	72.3%
Injection drug use (IDU)	30	9.3%	945	6.3%
MSM and IDU	29	9.0%	1,938	13.0%
Heterosexual contact	34	10.6%	1,018	6.8%
Mother with or at Risk for HIV (Pediatric)	0	0.0%	30	0.2%
Unknown risk	11	3.4%	185	1.2%
Other	0	0.0%	26	0.2%

From the 2020 Ryan White Part A Application

HHS funding is for the three Eligible Metropolitan Area (EMA) counties of San Francisco, Marin, & San Mateo.

NEW HIV CASES – ARIES & SF EPI DATA 11/16/2020



SF City Clinic: Center of Excellence for Sexual Health Services



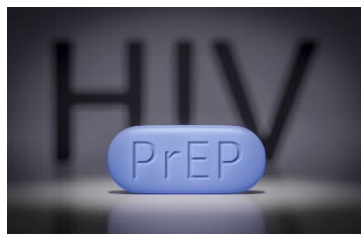
- Same day sexual health services
- STI and HIV screening, diagnosis and treatment
- Pre- and Post-exposure prophylaxis
- Rapid ART start
- HIV primary care
- Family planning and women's health
- HIV and Syphilis Partner Services
- HIV linkage and navigation
- Moderate complexity CLIA lab
- Diverse patient population
 - 39% B/AA or Latinx, 15% Asian
 - 40% <30 years
 - 50% LGBTQ



Known for our expertise. **Loved for our care.**

San Francisco City Clinic is a trusted source for sexual health services and information, known for our experienced professionals and commitment to delivering compassionate, high-quality care for over 100 years.

CROSS BAY COLLABORATION WITH ALAMEDA COUNTY



San Francisco & Alameda County work together on a number of HIV-related projects, including:

- CFAR Research Projects
- Pre-Exposure Prophylaxis & Social Marketing
- Ending the HIV Epidemic
- Monthly Meetings – Coordination of Best Practices

The two Counties co-planned and co-hosted the 23rd International AIDS Conference virtually in June 2020

San Francisco and San Mateo are in the early states of developing a Regional Plan

Crossbay Together – Cross-Sector Collaboration

