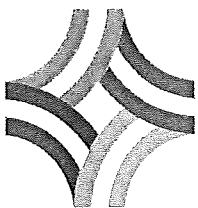


160621



SFMTA
Municipal Transportation Agency

SFMTA Muni Transit Service and Operator Convenience Facilities: Issues and Proposed Solutions

07/18 | 2016
SAN FRANCISCO, CALIFORNIA



SFMTA Muni Transit Service, and Why Operators Need Clean, Reliable Restrooms

- The SFMTA has 84 transit lines with 102 terminals all over San Francisco and into Daly City.
- Many routes are long, taking 43-85 minutes one-way, such as the #1, 29, 33, 54, 7 Lines, etc.
- Muni transit service is provided by 2,200 Operators, including 600 Female Operators, who work in challenging conditions to deliver service, per the City Charter's provisions re: on-time performance.
- Operators need decent, safe and sanitary restrooms to serve them, without having to take a "702" – leave the scheduled route to find a clean, available restroom.
- "702" creates delays in the transit system, reduce service reliability and increase travel time for transit riders.



Challenge in Finding Facilities for Operator Restroom

- **The SFMTA uses Licenses, Leases, Use Permits, and Free restrooms wherever practicable, but there are circumstances that preclude our ability to use these options, such as:**
 - Availability of business in close proximity to the transit terminal - within a ½ block, 50'-100' distance
 - Type of business
 - Transit line operation hours (peaks, 8, 12, 18, 24 hours)
 - Interest of business or lack of interest
 - Neighborhood safety and security
 - Size and cleanliness of facilities
 - Disability access
 - Lack of current business registration with the City
 - Wait time for use of restroom (e.g., if free, public)



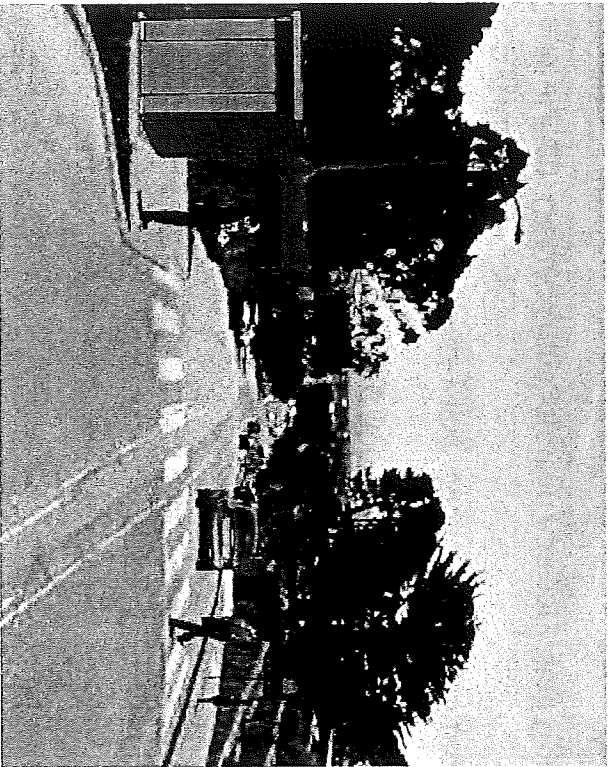
SFMTA Transit Operator Convenience Facilities Phase II Project Sites

SFMTA Taskforce identified nine operator convenience facilities locations for various terminals.

Phase II Proposed Facility Sites:

1. 6232 Mission St., Daly City (14 Line)*
2. Daly City BART Parking Lot, Daly City(28, 54, 14R Lines)*
3. **2055 Sunnydale Ave. (9 Line)**
 - 60 minutes 1-way, peak frequency every 12 minutes
4. **Parkridge Dr. & Burnett Ave. (37 Line)**
 - 70 minutes 1-way, peak frequency every 20-30 minutes
5. **20th Ave. & Buckingham Way (18, 91-Owl Lines)**
 - #18: 40 minutes 1-way, peak frequency every 20 minutes
 - #91-Owl: 90 minutes 1-way, frequency every 30 minutes
6. Rivera St. & Lower Great Highway (48 Line)
7. Fulton St. & 7th Ave. (5, 5R Lines)
8. Townsend St. & 4th St. (30, 45, 47, 81 Lines)
9. Van Ness Ave. & North Point St (28, 47, 49 Lines)

** Under the jurisdiction of the City of Daly City and/or Bay Area Rapid Transit (BART)*



Site

Challenges:

- No facility or business near the bus terminal for licensing or leasing opportunity.

Outreach:

- Contacted John McLaren Child Development Center's principal by phone and email
- Informed and obtained approval from Rec & Park to install bulb-out adjacent to their property
- Mailed notices to residents within 300 foot radius of proposed site

Approvals:

- General Plan, CEQA, Transportation Advisory Staff Committee, Arts Commission, DPW, SFMTA; pending BOS

Proposal:

- New bulb-out on the north side of Sunnydale Ave across from the John McLaren school.
- Two new curb ramps to improve pedestrian safety when crossing the Sunnydale Ave.



Parkridge Dr. & Burnett Ave. — #37 Line

SFMTA
Municipal Transportation Agency



Site

Challenges:

- No facility or business near the bus terminal for licensing or leasing opportunity.

Outreach:

- Staff held one public meeting at Noe Valley Public Library on 6/18/15 and canvassed the project area on 7/20/15 with fact sheets and surveys
- Mailed notices to residents within 300 foot radius of proposed site

Approvals:

- General Plan, CEQA, Transportation Advisory Staff Committee, Arts Commission, DPW, SFMTA; pending BOS

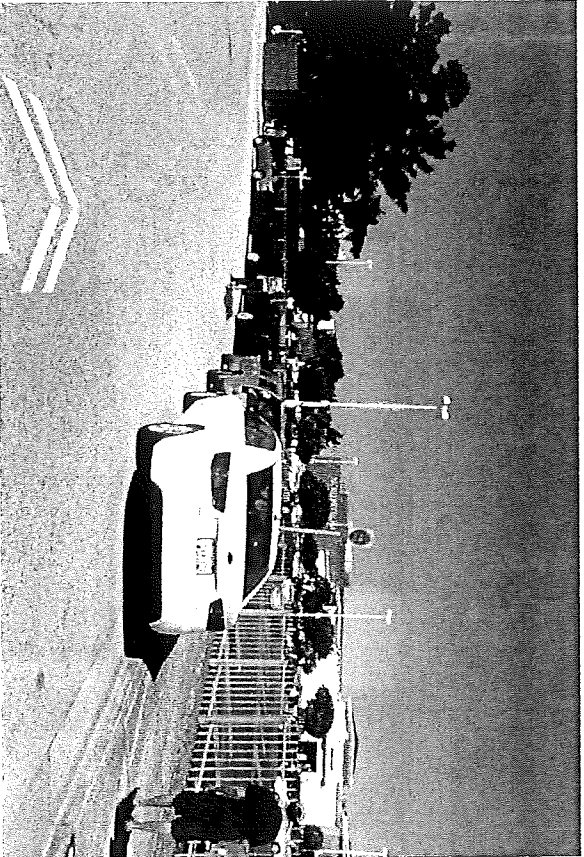
Proposal:

- New bulb-out west side of Burnett Ave approximately 35 feet south of the existing bus terminal



20th Ave. & Buckingham Way — #18 & #91-Owl Lines

SFMTA
Municipal Transportation Agency



Site

Challenges:

- Nearby businesses in Stonestown are closed during the 91-Owl line service hours (1a.m. to 5a.m.)

Outreach:

- Staff held one public meeting at the Merced Public Library 12/3/14
- Incorporated SF Arts Commissions recommendation to relocate the proposed location from 19th Ave to 20th Ave & Buckingham Way and sent an update via group email for stakeholders to comment
- Mailed notices to residents within 300 foot radius of proposed site

Approvals:

- General Plan, CEQA, Transportation Advisory Staff Committee, Arts Commission, DPW, SFMTA; pending BOS

Proposal:

- New bulb-out northwest corner of 20th Ave and Buckingham Way
- Two new curb ramps to improve pedestrian safety when crossing the entrance of parking lot

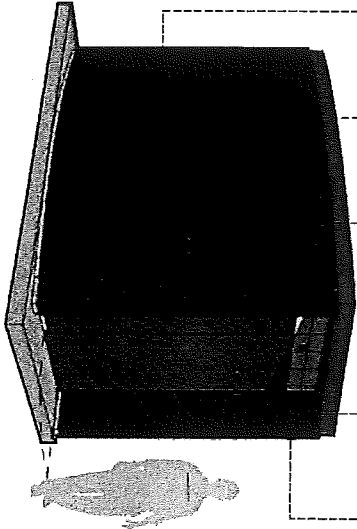


PREFAB RENDERINGS

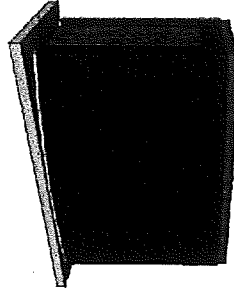
SFMTA
Municipal Transportation Agency

BASIC MODULE DESIGN

MATERIALS & COLOR SCHEME



SINGLE OCCUPANCY - BASIC MODULE REAR VIEW

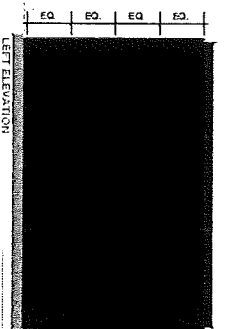
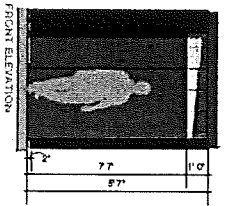
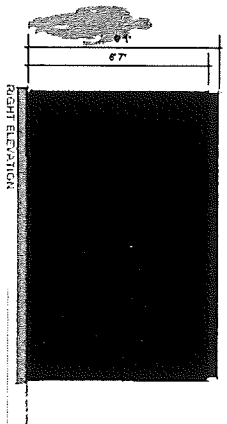


DESIGN CRITERIA

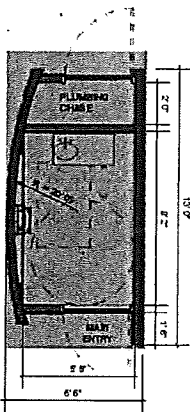
TEMPORARY/PREFABRICATED FACILITIES

WALLS: C.M.U. WALLS WITH CEMENT PLASTER, PAINT & ANTIGRAFFITI COATING.
INTERIOR FINISH: EXPOSED CMU W/ EPOXY PAINT.
DOORS: GALVANIZED METAL DOORS, PAINTED.
NATURAL ILLUMINATION: KAL WALL VENTILATION; METAL LOUVERS & MECHANICAL EXHAUST FAN.
LIGHTING: INTERIOR - MOTION ACTIVATED LIGHT, EXTERIOR - RECESSED CEILING LIGHT.
FLOOR: EXPOSED CONCRETE.

SINGLE OCCUPANCY - BASIC MODULE



FLOOR PLAN - SINGLE OCCUPANCY - BASIC MODULE



Prefabricated ADA Compliance Unit.