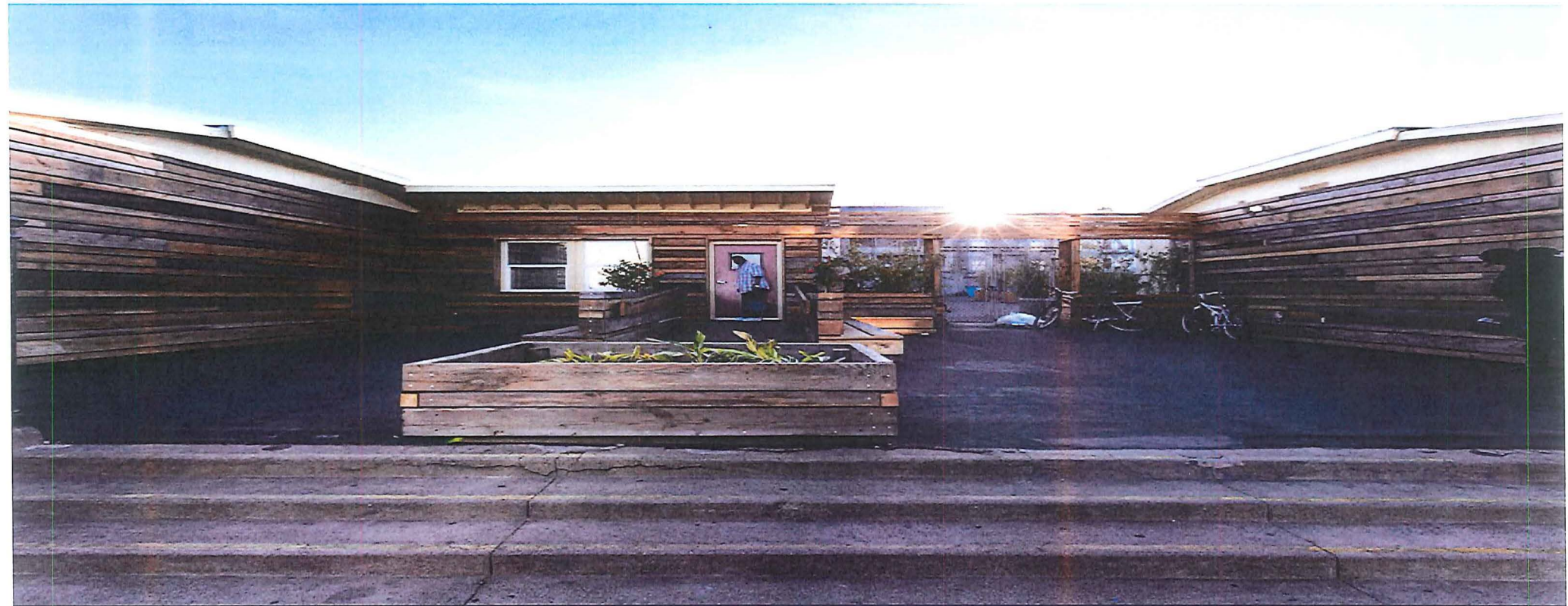


File # 160174  
Received in  
Committee  
5/4/16  
for



Update on the New Department of Homeless Services

# Informing the New Department

**5 Year Plan  
from LHCB**

**Advice from  
National  
Experts**

**Nationally  
Recognized  
System Models**

**Local, Regional  
& National  
Data**

**Lessons from  
Other  
Communities**

**Local &  
National Best  
Practices**

---

# New Department on Homelessness: Goals

Through the provision of coordinated, compassionate, and high-quality services the Department will work toward the goal of making homelessness in San Francisco rare, brief, and onetime. Benchmarks toward this goal include:

**Move 8,000  
people into  
housing in the  
next 4 years**

**Reducing the  
number of  
people who  
become  
homeless**

**Reducing the  
length of time  
people spend  
homeless**

**Reducing street  
homelessness**

# New Department Priorities

Housing First—a system focused on permanent housing & a rapid re-housing model

Building on the culture of **customer service** within the City's system of care & housing

Continuing to move toward a **fully coordinated system** with **transparency in the housing placement** process

Focus on ending homelessness for people **who have been homeless the longest**

Engage in **strategic planning process** to maximize the impact of our system of services and resources

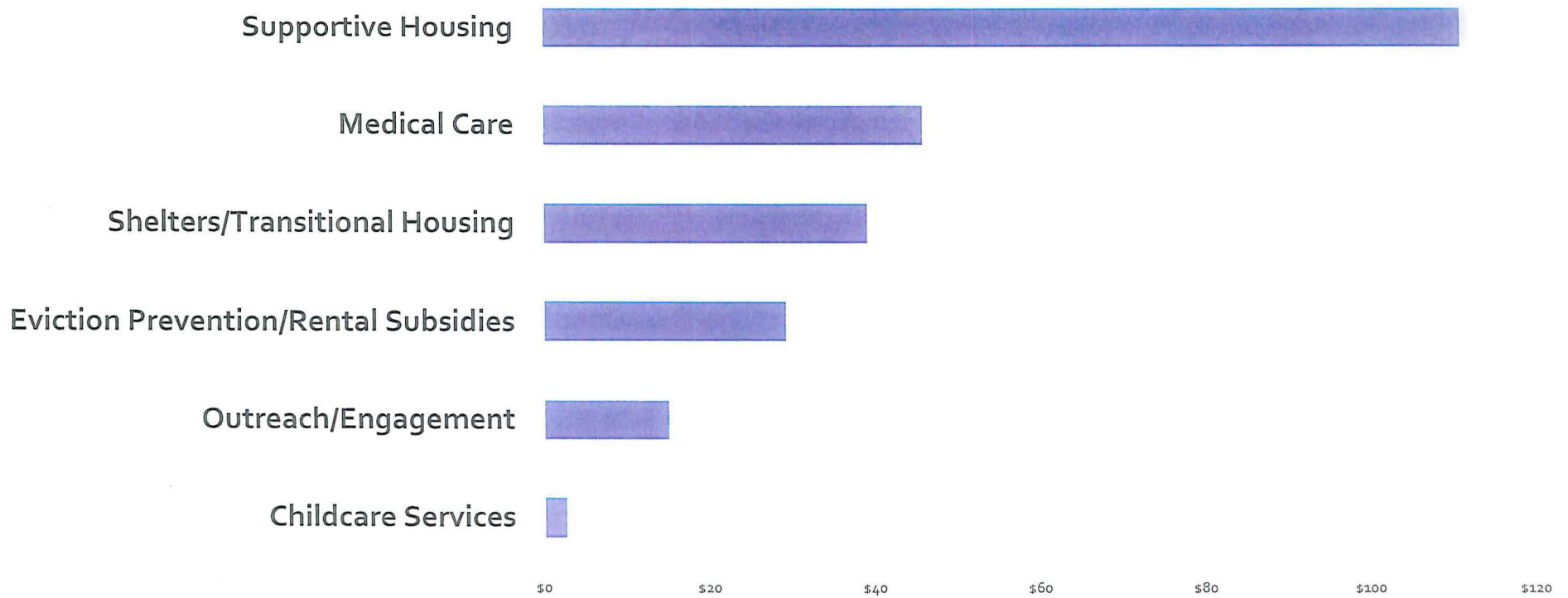
# Homeless Services Spending in the City's Budget (in millions)

FY11-12	FY12-13	FY13-14	FY14-15	FY 15-16	% Change
\$157	\$181	\$189	\$213	\$242	55%

- The vast majority of operating expenditures occur in the Human Services Agency (55%) or Department of Public Health (34%)
- Approximately three-quarters of the funding comes from the City's General Fund



# Spending by Service Category FY 2015-16



# Programs of the New Department

**Homelessness  
Prevention**

**Street Outreach**

**Drop In Centers**

**Emergency  
Shelters**

**Transitional  
Housing**

**Permanent  
Supportive  
Housing & Rapid  
Re-Housing**

# Programs will Serve a Diverse Community

**Single  
Individuals**

**Families with  
Children**

**Transitional  
Age Youth**

**Veterans**

---



# System Gaps: Focus Areas for New Department

## Coordinated Entry

- For all subpopulations
- For all placements
- To identify system gaps
- Consistent and transparent housing placement

## Expand Rapid Re-Housing

- Successful for many families
- In pilot phase for single individuals
- In pilot phase for transitional age youth

## Community-Wide Database

- Consistent data standards
- Real time access to data
- Using data more extensively for system & program planning

## Housing Ladder

- Pilot strategies for people to move on from supportive housing, as appropriate
- Rental Assistance Demonstration (RAD)

# Department Timeline

